

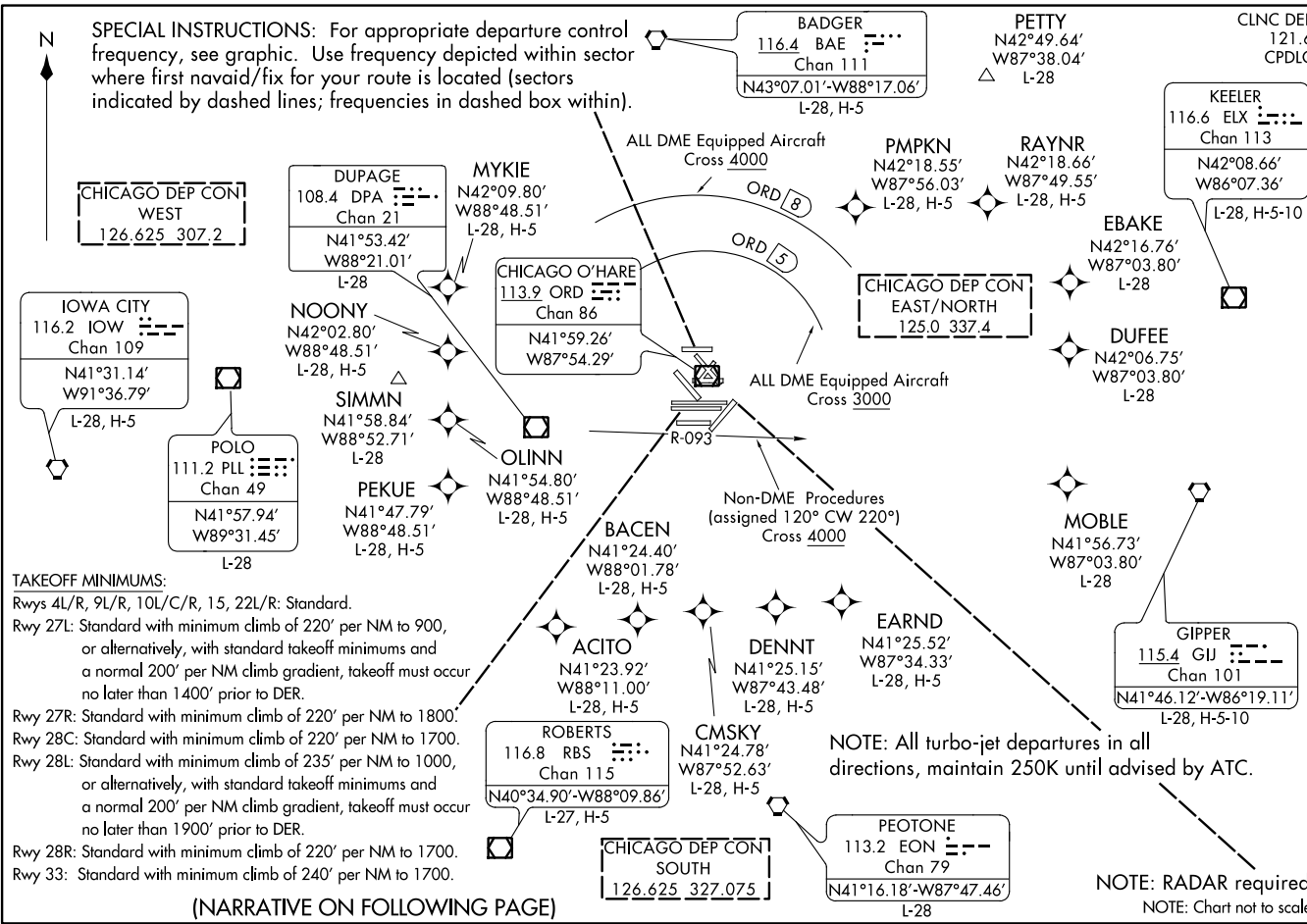
O'HARE TWO DEPARTURE
(ORD2.ORD) 15SEP16

CHICAGO, ILLINOIS
CHICAGO O'HARE INTL (ORD)

(ORD2.ORD) 17005
O'HARE TWO DEPARTURE

SI-166 (FAA)

CHICAGO O'HARE INTL (ORD)
CHICAGO, ILLINOIS



(NARRATIVE ON FOLLOWING PAGE)

O'HARE TWO DEPARTURE



DEPARTURE ROUTE DESCRIPTION

ALL AIRCRAFT: Expect RADAR vectors to first enroute navaid/fix.

Expect clearance to requested altitude/flight level ten minutes after departure.

ALL DME EQUIPPED AIRCRAFT: Cross 5 DME arc of ORD VOR/DME

at or above 3000 MSL, cross 8 DME arc of ORD VOR/DME at or above 4000, maintain 5000 or assigned altitude. If unable to comply advise ATC as soon as possible prior to departure.

NON-DME PROCEDURES: Aircraft initially assigned heading 120 CW 220, cross DPA VOR/DME R-093 at or above 4000, maintain 5000 or assigned altitude. If unable to comply advise ATC as soon as possible prior to departure.

TAKEOFF OBSTACLES NOTES:

- Rwy 4L: Tower on building 3301' from DER, 1207' right of centerline, 109' AGL/750' MSL.
- Rwy 4R: Taxiing aircraft 152' from DER, 328' left of centerline, up to 80' AGL/735' MSL.
Trees 809' from DER, 611' right of centerline, up to 36' AGL/675' MSL.
- Rwy 9L: Building 2771' from DER, 1233' right of centerline, 94' AGL/745' MSL.
- Rwy 9R: Pole 876' from DER, 688' right of centerline 29' AGL/673' MSL.
- Rwy 10C: Glideslope antenna 1170' from DER, 777' left of centerline, 41' AGL/694' MSL.
- Rwy 10L: Taxiing aircraft 32' from DER, 440' left of centerline, up to 80' AGL/735' MSL.
Sign and tower on building beginning 2517' from DER, 731' right of centerline, up to 88' AGL/732' MSL. Tower 3957' from DER, 1289' right of centerline, 127' AGL/771' MSL.
- Rwy 10R: Fences beginning 10' from DER, 44' right of centerline, up to 12' AGL/665' MSL.
Bush, fences, and poles beginning 34' from DER, 195' left of centerline, up to 26' AGL/686' MSL.
Trees beginning 2202' from DER, 587' right of centerline, up to 71' AGL/724' MSL.
Tower 4381' from DER, 1537' right of centerline, 138' AGL/783' MSL.
- Rwy 15: Taxiing aircraft 1105' from DER, 766' right of centerline, up to 80' AGL/736' MSL.
- Rwy 22R: Taxiing aircraft 34' from DER, 429' left of centerline, up to 80' AGL/736' MSL.
- Rwy 27L: Taxiing aircraft 70' from DER, 407' left of centerline, up to 80' AGL/740' MSL.
Pole 5553' from DER, 1833' left of centerline, 143' AGL/805' MSL.
- Rwy 27R: Obstruction light on tank 1509' from DER, 887' left of centerline, 56' AGL/726' MSL.
Elevator 2778' from DER, 1021' left of centerline, 111' AGL/776' MSL.
- Rwy 28C: Trees begining 2373' from DER, 696' left of centerline, up to 89' AGL/768' MSL.
Trees 2559' from DER, 256' right of centerline, up to 58' AGL/737' MSL.
- Rwy 28L: Terrain and bush beginning 5' from DER, 352' right of centerline, up to 4' AGL/692' MSL.
Poles beginning 244' from DER, 471' right of centerline, up to 38' AGL/707' MSL.
Railroad beginning 590' from DER, 639' left of centerline, up to 23' AGL/700' MSL.
Poles and trees beginning 1500' from DER, 721' left of centerline, up to 79' AGL/758' MSL.
- Rwy 33: Pole 1993' from DER, 790' left of centerline, 45' AGL/716' MSL.

EC-3: 27 APR 2017 to 25 MAY 2017

EC-3: 27 APR 2017 to 25 MAY 2017

O'HARE TWO DEPARTURE