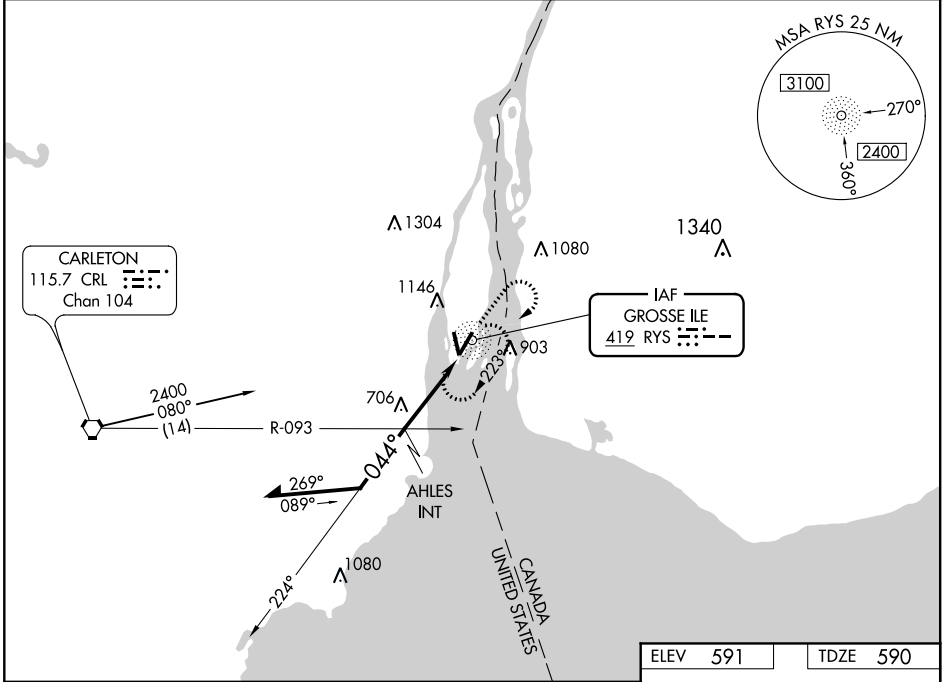


NDB RYS 419	APP CRS 044°	Rwy ldg 4846
		TDZE 590
		Apt Elev 591

NDB RWY 4
GROSSE ILE MUNI (ONZ)

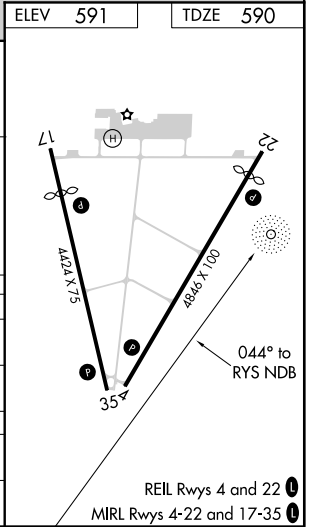
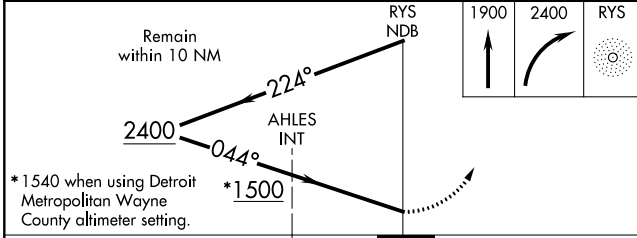
▼ Visibility reduction by helicopters NA. When local altimeter setting not received, use Detroit Metropolitan Wayne County altimeter setting and increase all MDA 40 feet. Increase AHLES fix minimums Circling Cat A, C, and D visibilities ¼ mile.
 ▲ MISSED APPROACH: Climb to 1900 then climbing right turn to 2400 direct RYS NDB and hold.

AWOS-3 119.675	DETROIT APP CON 134.3 363.2	GCO 121.725	UNICOM 123.0 (CTAF) U
--------------------------	---------------------------------------	-----------------------	--



EC-1, 14 SEP 2017 to 12 OCT 2017

EC-1, 14 SEP 2017 to 12 OCT 2017



CATEGORY	A	B	C	D
S-4	1500-1¼	910 (1000-1¼)	1500 - 2¾ 910 (1000-2¾)	1500 - 3 910 (1000-3)
CIRCLING	1500-1¼	909 (1000-1¼)	1500 - 2¾ 909 (1000-2¾)	1500 - 3 909 (1000-3)
AHLES FIX MINIMUMS				
S-4	1140 - 1	550 (600-1)	1140 - 1½ 550 (600-1½)	1140 - 1¾ 550 (600-1¾)
CIRCLING	1460 - 1 869 (900-1)	1460 - 1¼ 869 (900-1¼)	1460 - 2½ 869 (900-2½)	1460 - 2¾ 869 (900-2¾)

APP CRS 217°	Rwy Idg 4418
	TDZE 591
	Apt Elev 591

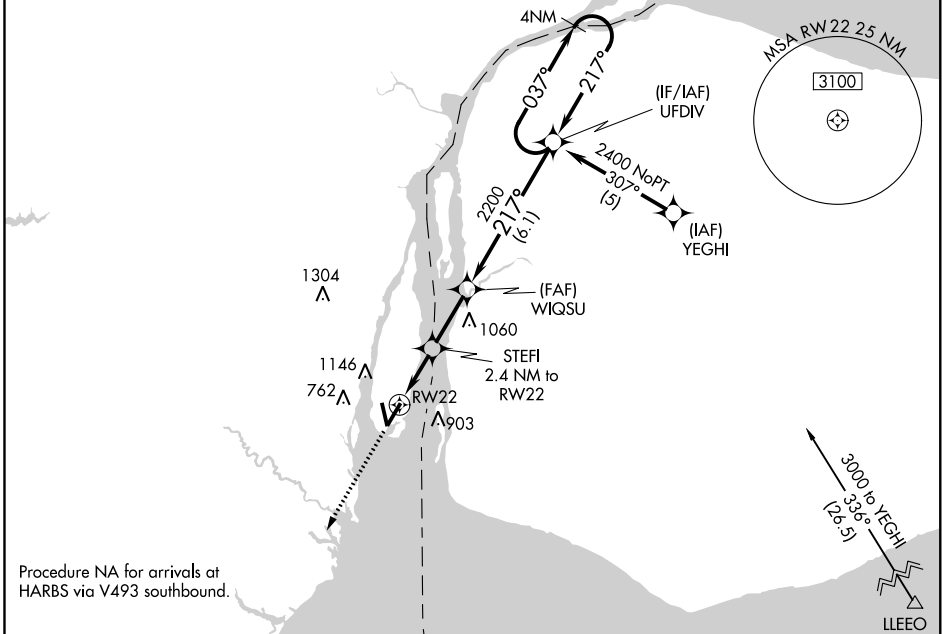
RNAV (GPS) RWY 22

GROSSE ILE MUNI (ONZ)

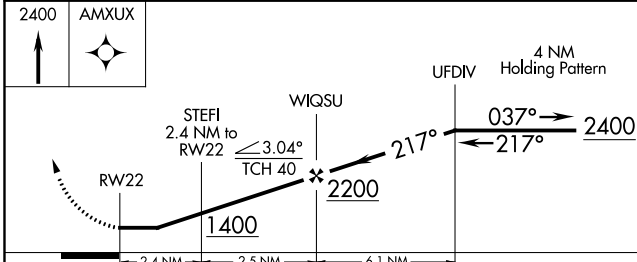
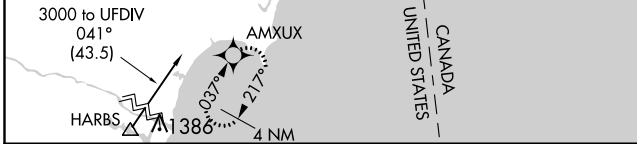
⚠ DME/DME RNP-0.3 NA. Visibility reduction by helicopters NA. When local altimeter setting not received, use Detroit Metropolitan Wayne County altimeter setting and increase all MDA 40 feet. Increase LNAV Cat C and Circling Cat A, C, and D visibilities ¼ mile.

⚠ MISSED APPROACH: Climb to 2400 direct AMXUX and hold.

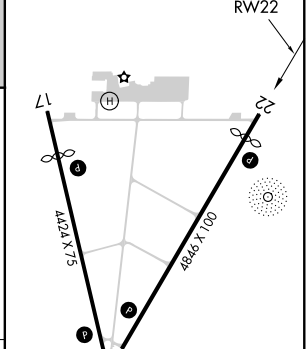
AWOS-3 119.675	DETROIT APP CON 134.3 363.2	GCO 121.725	UNICOM 123.0 (CTAF) 0
--------------------------	---------------------------------------	-----------------------	---------------------------------



Procedure NA for arrivals at HARBS via V493 southbound.



ELEV 591	TDZE 591
	217° to RW22



CATEGORY	A	B	C	D
LNAV MDA	960-1	369 (400-1)		960-1¼ 369 (400-1¼)
CIRCLING	1460-1 869 (900-1)	1460-1¼ 869 (900-1¼)	1460-2½ 869 (900-2½)	1460-2¾ 869 (900-2¾)

REIL Rwy 4 and 22 0
MIRL Rwy 4-22 and 17-35 0

EC-1, 14 SEP 2017 to 12 OCT 2017

EC-1, 14 SEP 2017 to 12 OCT 2017

APP CRS 037°	Rwy Idg 4846
	TDZE 590
	Apt Elev 591

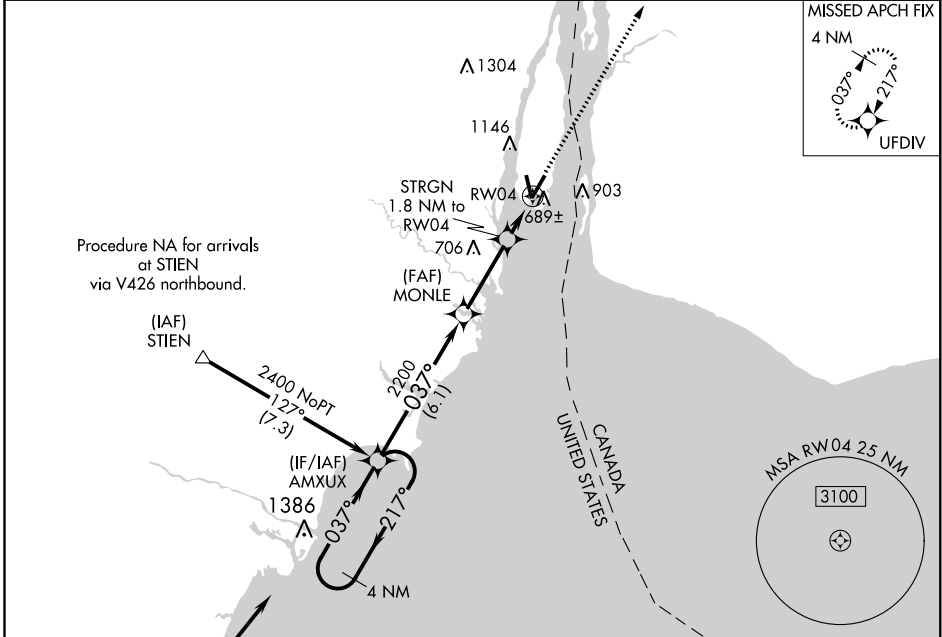
RNAV (GPS) RWY 4

GROSSE ILE MUNI (ONZ)

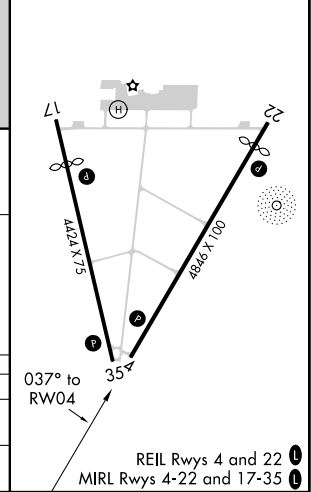
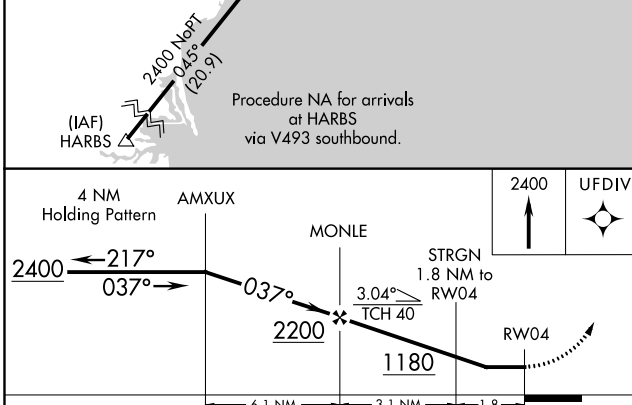
⚠ DME/DME RNP-0.3 NA. Visibility reduction by helicopters NA. When local altimeter setting not received, use Detroit Metropolitan Wayne County altimeter setting and increase all MDA 40 feet and Circling visibilities Cat A, C, and D ¼ mile.

MISSED APPROACH:
Climb to 2400 direct UFDIV and hold.

AWOS-3 119.675	DETROIT APP CON 134.3 363.2	GCO 121.725	UNICOM 123.0 (CTAF) 📻
--------------------------	---------------------------------------	-----------------------	--



ELEV	591	TDZE	590
------	-----	------	-----



CATEGORY	A	B	C	D
LNVA MDA	940-1 350 (400-1)		940-1¼ 350 (400-1¼)	
CIRCLING	1460-1 869 (900-1)	1460-1¼ 869 (900-1¼)	1460-2½ 869 (900-2½)	1460-2¾ 869 (900-2¾)

EC-1, 14 SEP 2017 to 12 OCT 2017

EC-1, 14 SEP 2017 to 12 OCT 2017

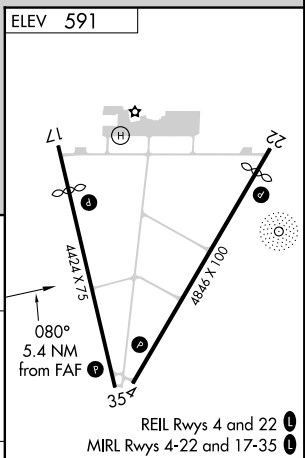
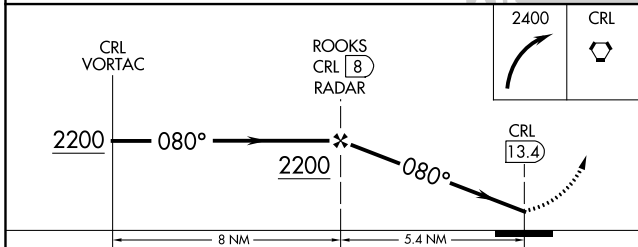
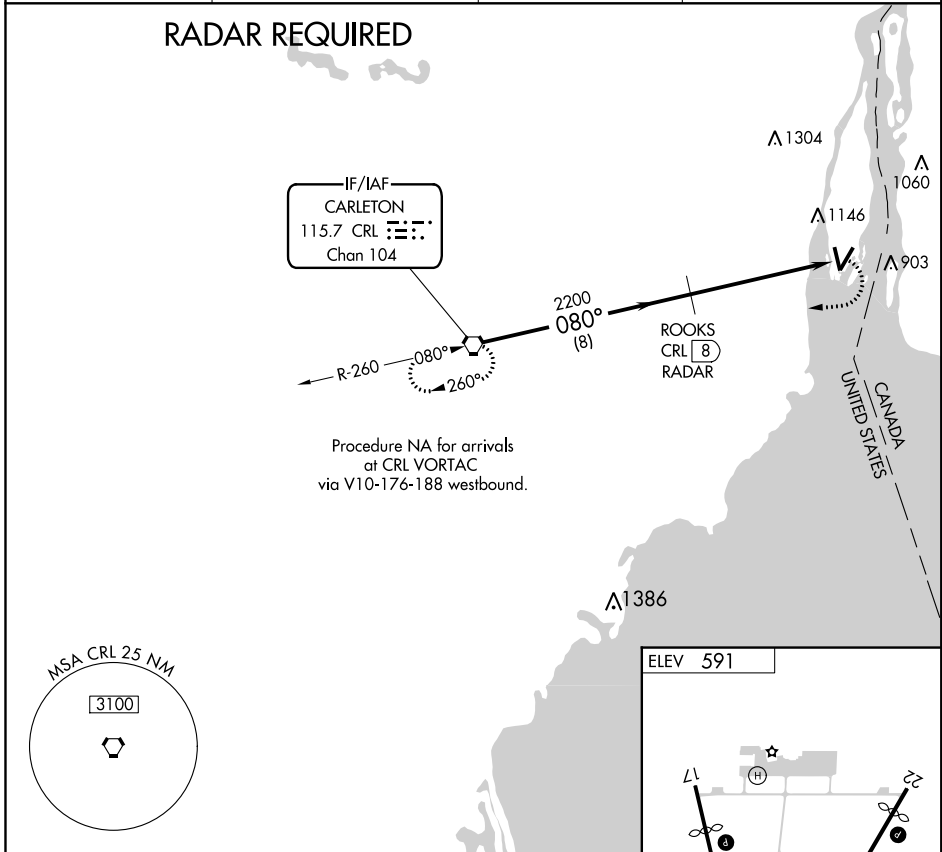
VORTAC CRL 115.7 Chan 104	APP CRS 080°	Rwy Idg TDZE Apt Elev N/A N/A 591
---	------------------------	---

VOR-A
GROSSE ILE MUNI (ONZ)

⚠ When local altimeter setting not received, use Detroit Metropolitan Wayne County altimeter setting and increase all MDA 40 feet and Cat A, C, and D visibilities ¼ mile.

⚠ MISSED APPROACH: Climbing right turn to 2400 direct CRL VORTAC and hold.

AWOS-3 119.675	DETROIT APP CON 134.3 363.2	GCO 121.725	UNICOM 123.0 (CTAF) Ⓛ
--------------------------	---------------------------------------	-----------------------	--



CATEGORY	A	B	C	D	FAF to MAP 5.4 NM					
CIRCLING	1460 - 1 869 (900-1)	1460 - 1¼ 869 (900-1¼)	1460 - 2½ 869 (900-2½)	1460 - 2¾ 869 (900-2¾)	Knots	60	90	120	150	180
					Min:Sec	5:24	3:36	2:42	2:10	1:48

EC-1, 14 SEP 2017 to 12 OCT 2017

EC-1, 14 SEP 2017 to 12 OCT 2017