

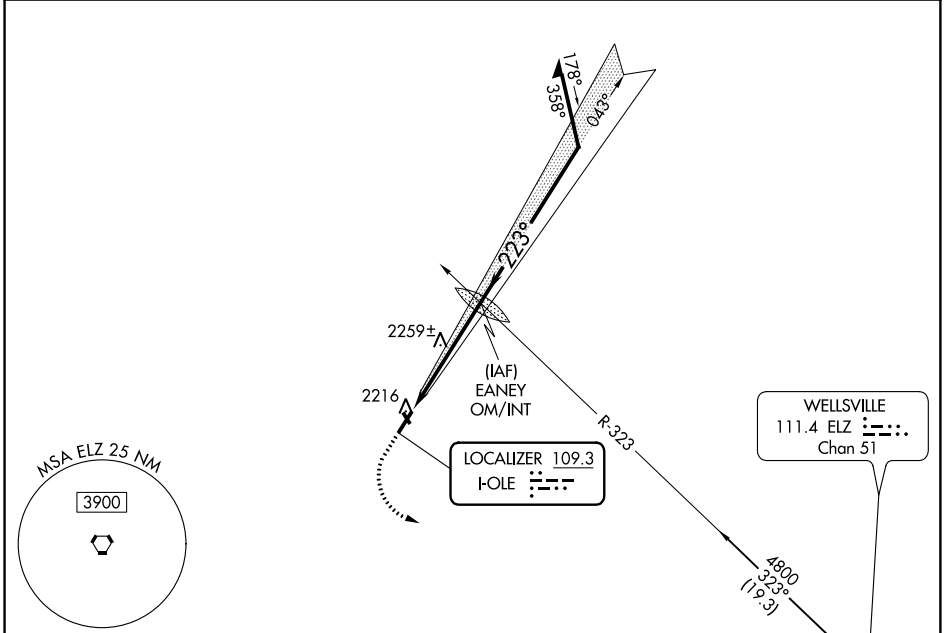
LOC I-OLE 109.3	APP CRS 223°	Rwy Idg TDZE Apt Elev	4500 2132 2135
---------------------------	------------------------	-----------------------------	---

LOC RWY 22
CATTARAUGUS COUNTY-OLEAN (OLE)

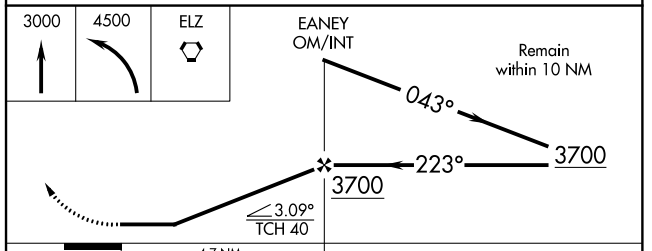
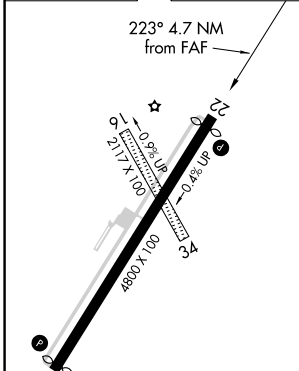
▽ When VGSJ inop, straight-in/circling Rwy 22 procedure NA at night.
▲ NA When local altimeter setting not received, use Bradford, PA altimeter setting and increase all MDAs 80 feet and S-22 Cat C and D visibility ¼ mile. Visibility reduction by helicopters NA.

MISSED APPROACH: Climb to 3000 then climbing left turn to 4500 direct ELZ VORTAC and hold.

AWOS-3 118.375	CLEVELAND CENTER 124.325 353.85	UNICOM 122.8 (CTAF) 0
--------------------------	---	---------------------------------



ELEV 2135	D	TDZE 2132
-----------	----------	-----------



	A	B	C	D
S-22	2520-1 388 (400-1)			2520-1½ 388 (400-1½)
CIRCLING	2620-1 485 (500-1)		2620-1½ 485 (500-1½)	2700-2 565 (600-2)

NE-2, 14 SEP 2017 to 12 OCT 2017

NE-2, 14 SEP 2017 to 12 OCT 2017

WAAS CH 99401 W22A	APP CRS 223°	Rwy Idg 4500 TDZE 2132 Apt Elev 2135
--	------------------------	---

RNAV (GPS) RWY 22

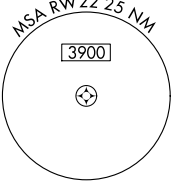
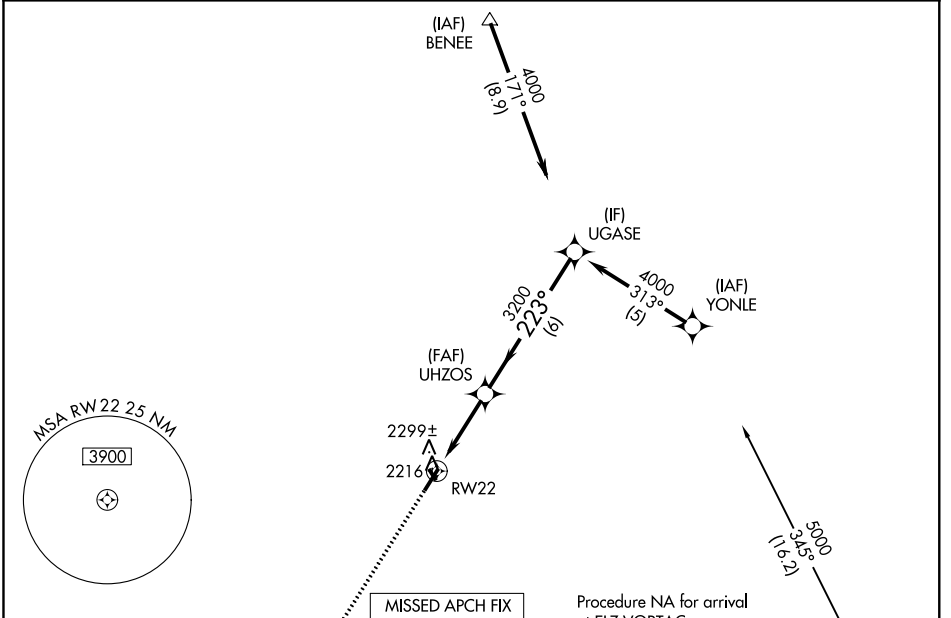
CATTARAUGUS COUNTY-OLEAN (OLE)

▼ DME/DME RNP-0.3 NA. When VGSi inop, straight-in/circling Rwy 22 procedure NA at night. If local altimeter setting not received, use Bradford, PA altimeter setting and increase all DAs/MDAs 80 feet. For uncompensated Baro-VNAV systems, LNAV/VNAV NA below -19°C (-2°F) or above 43°C (110°F). Baro-VNAV NA when using Bradford, PA altimeter setting. Visibility reduction by helicopters NA.

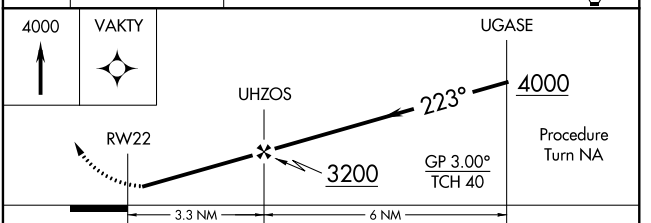
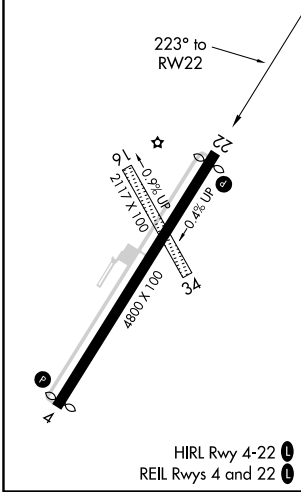
▲ NA

W MISSED APPROACH: Climb to 4000 direct VAKTY and hold.

AWOS-3 118.375	CLEVELAND CENTER 124.325 353.85	UNICOM 122.8 (CTAF) 0
--------------------------	---	---------------------------------



ELEV 2135	D	TDZE 2132
-----------	----------	-----------



CATEGORY	A	B	C	D
LPV DA	2382-1 250 (300-1)			
LNAV/VNAV DA	2569-1½ 437 (500-1½)			
LNAV MDA	2560-1 428 (500-1)	2560-1¼ 428 (500-1¼)	2560-1½ 428 (500-1½)	
CIRCLING	2620-1½ 485 (500-1½)		2700-2 565 (600-2)	

NE-2, 14 SEP 2017 to 12 OCT 2017

NE-2, 14 SEP 2017 to 12 OCT 2017

WAAS CH 53401 W04A	APP CRS 043°	Rwy Ldg TDZE Apt Elev	4500 2132 2135
--	------------------------	-----------------------------	---

RNAV (GPS) RWY 4

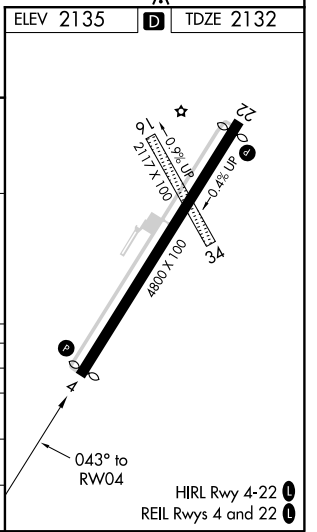
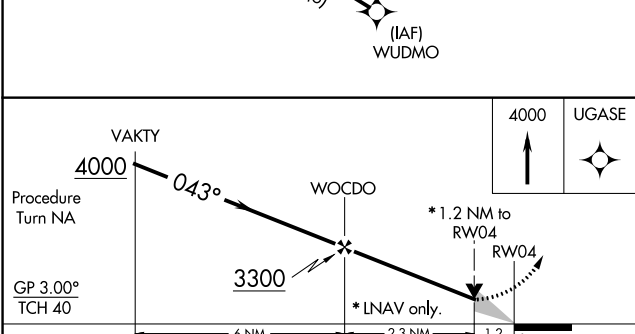
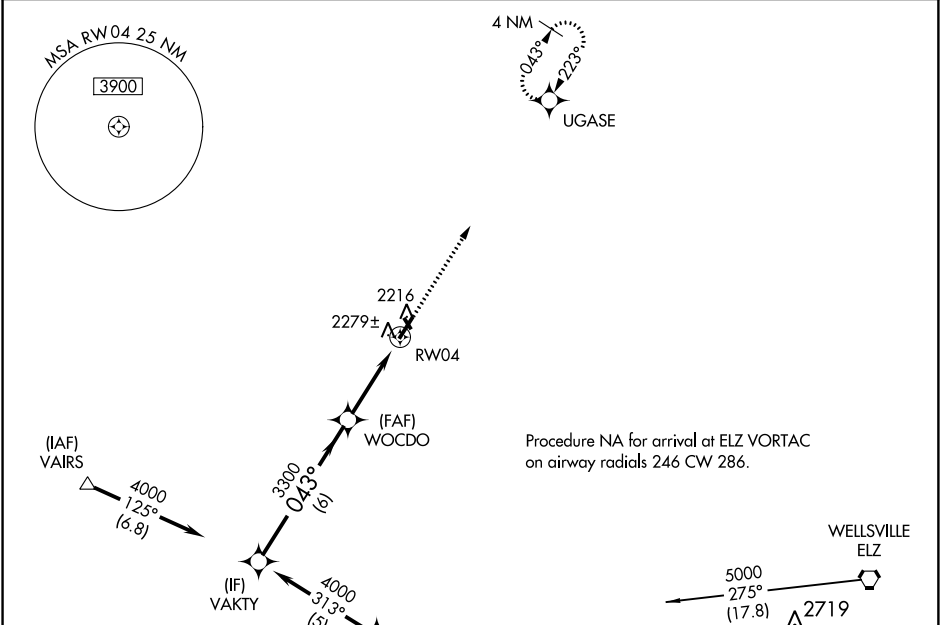
CATTARAUGUS COUNTY-OLEAN (OLE)

▼ DME/DME RNP-0.3 NA. When VGSi inop, circling Rwy 22 NA at night. If local altimeter setting not received, use Bradford, PA altimeter setting and increase all DAs/MDAs 80 feet.

▲ NA For uncompensated Baro-VNAV systems, LNAV/VNAV NA below -19°C (-2°F) or above 44°C (111°F). VDP and Baro-VNAV NA when using Bradford, PA altimeter setting.

W MISSED APPROACH: Climb to 4000 direct UGASE and hold.

AWOS-3 118.375	CLEVELAND CENTER 124.325 353.85	UNICOM 122.8 (CTAF) 1
--------------------------	---	---------------------------------



CATEGORY	A	B	C	D
LPV DA	2382-1		250 (300-1)	
LNAV/VNAV DA	2549-1½		417 (500-1½)	
LNAV MDA	2560-1	428 (500-1)	2560-1¼ 428 (500-1¼)	2560-1½ 428 (500-1½)
CIRCLING	2620-1½ 485 (500-1½)		2700-2 565 (600-2)	

NE-2, 14 SEP 2017 to 12 OCT 2017

NE-2, 14 SEP 2017 to 12 OCT 2017