

LOC/DME I-OGS <b>110.7</b> Chan <b>44</b>	APP CRS <b>269°</b>	Rwy Idg <b>6035</b> TDZE <b>302</b> Apt Elev <b>302</b>
---	------------------------	---

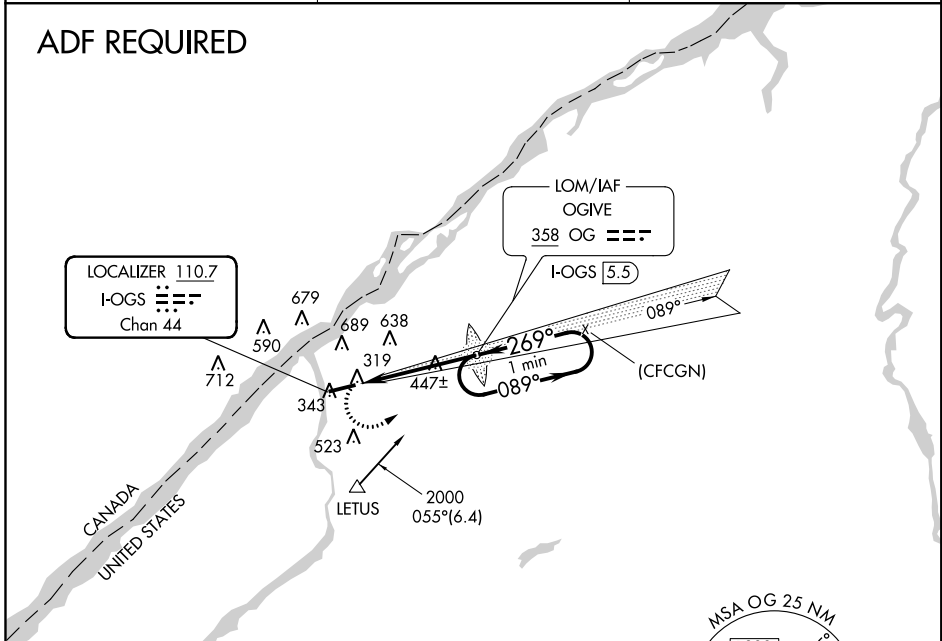
**LOC RWY 27**  
OGDENSBURG INTL (OGS)

**NA** VDP NA with Massena altimeter setting. When local altimeter setting not received, use Massena altimeter setting and increase all MDA 100 feet and S-LOC 27 and Circling visibility Cat C/D ¼ SM.

MISSED APPROACH: Climbing left turn to 2000 direct OGIVE LOM and hold.

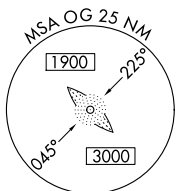
AWOS-3 <b>118.525</b>	BOSTON CENTER <b>135.25 377.1</b>	UNICOM <b>122.8 (CTAF)</b>
--------------------------	--------------------------------------	-------------------------------

**ADF REQUIRED**

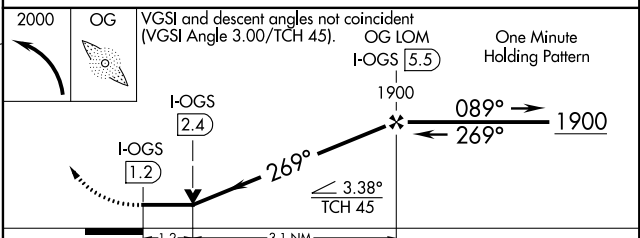
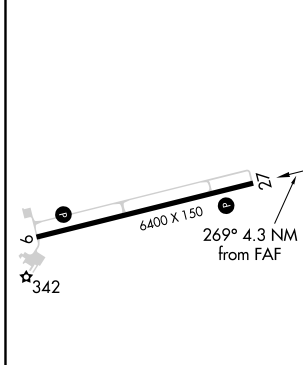


LOCALIZER 110.7  
I-OGS 5.5  
Chan 44

LOM/IAF  
OGIVE  
358 OG ---  
I-OGS 5.5



ELEV 302	<b>D</b>	TDZE 302
----------	----------	----------



REIL Rwy 27  
HIRL Rwy 9-27 **D**

FAF to MAP 4.3 NM

Knots	60	90	120	150	180
Min:Sec	4:18	2:52	2:09	1:43	1:26

CATEGORY	A	B	C	D
S-27	740-1 438 (500-1)		740-1¼ 438 (500-1¼)	
<b>C</b> CIRCLING	740-1 438 (500-1)	1000-1 698 (700-1)	1000-2 698 (700-2)	1000-2¼ 698 (700-2¼)

NE-2, 17 AUG 2017 to 14 SEP 2017

NE-2, 17 AUG 2017 to 14 SEP 2017

WAAS CH <b>40041</b> <b>W27A</b>	APP CRS <b>269°</b>	Rwy Idg TDZE Apt Elev	<b>6035</b> <b>302</b> <b>302</b>
--	------------------------	-----------------------------	---

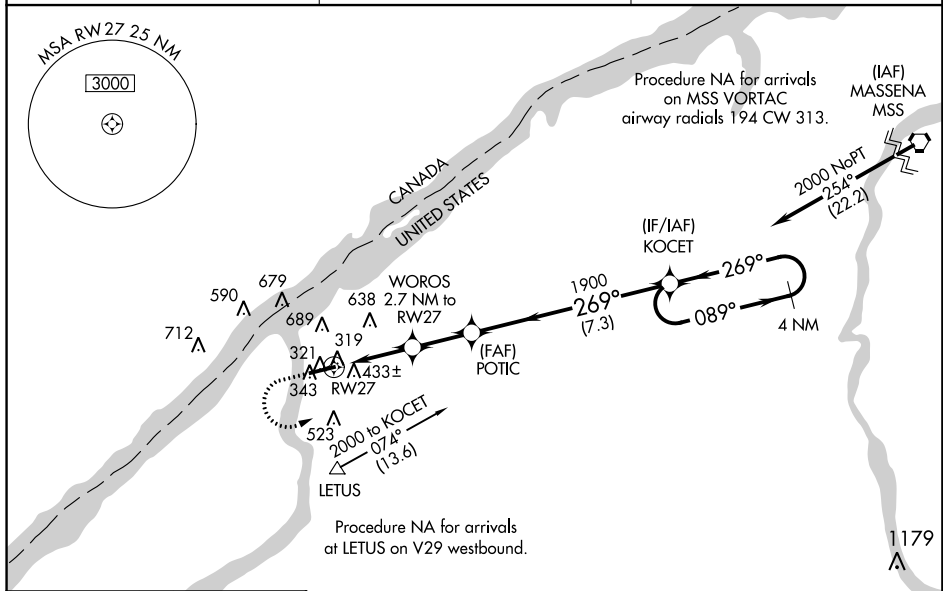
# RNAV (GPS) RWY 27

OGDENSBURG INTL (OGS)

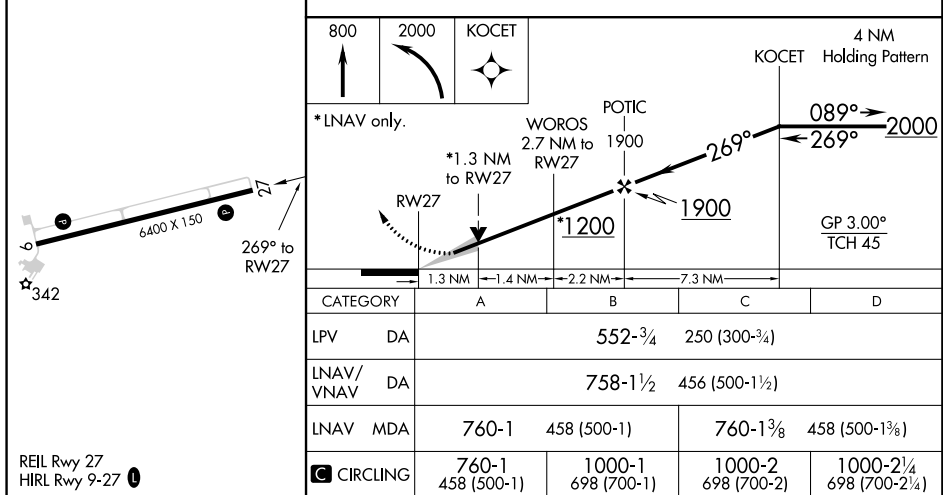
**NA** Baro-VNAV and VDP NA when using Massena altimeter setting. DME/DME RNP-0.3 NA. When local altimeter setting not received, use Massena altimeter setting and increase LPV DA to 636, LNAV/VNAV DA to 842 and all visibilities  $\frac{3}{8}$  SM; increase all MDA 100 feet and LNAV and Circling Cat C and D visibilities  $\frac{1}{4}$  SM. For uncompensated Baro-VNAV systems, LNAV/VNAV NA below -15°C (5°F) or above 54°C (130°F).

**MISSED APPROACH:** Climb to 800 then climbing left turn to 2000 direct KOCET and hold.

AWOS-3 <b>118.525</b>	BOSTON CENTER <b>135.25 377.1</b>	UNICOM <b>122.8 (CTAF) ①</b>
--------------------------	--------------------------------------	---------------------------------



ELEV 302	<b>D</b>	TDZE 302
----------	----------	----------



NE-2: 17 AUG 2017 to 14 SEP 2017

NE-2: 17 AUG 2017 to 14 SEP 2017

WAAS CH <b>69528</b> <b>W09A</b>	APP CRS <b>089°</b>	Rwy Idg <b>6006</b> TDZE <b>292</b> Apt Elev <b>302</b>
--	------------------------	---

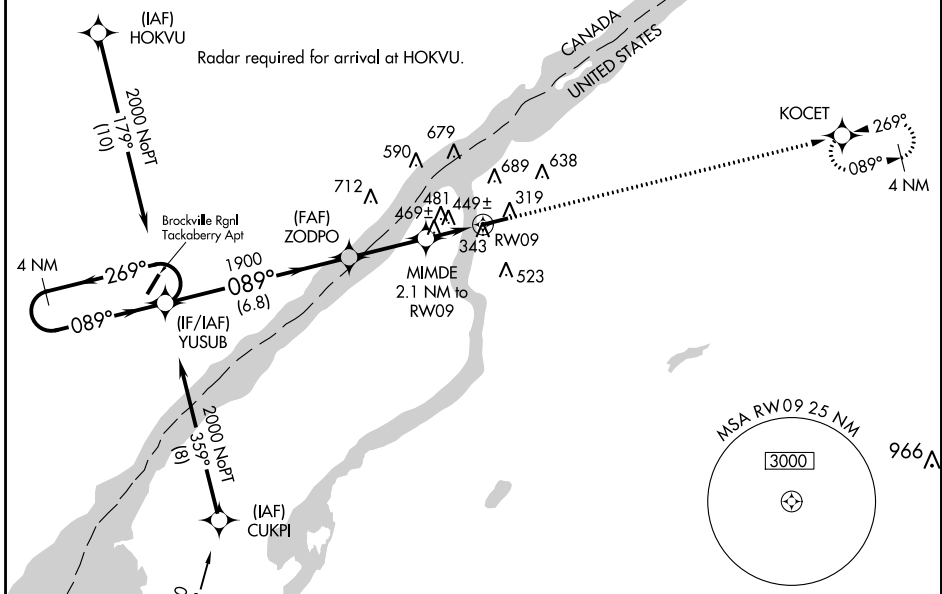
# RNAV (GPS) RWY 9

OGDENSBURG INTL (OGS)

**NA** Baro-VNAV NA when using Massena altimeter setting. For uncompensated Baro-VNAV systems, LNAV/VNAV NA below -15°C (5°F) or above 42°C (107°F). DME/DME RNP-0.3 NA. Rwy 9 helicopter visibility reduction below 3/4 SM NA. When local altimeter setting not received, use Massena altimeter setting; increase LPV DA to 623 feet, LNAV/VNAV DA to 848 feet and all visibilities 3/8 SM; increase all MDAs 100 feet and LNAV/Circling Cat C/D visibility 1/2 SM.

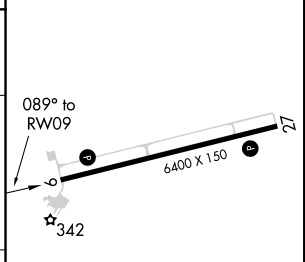
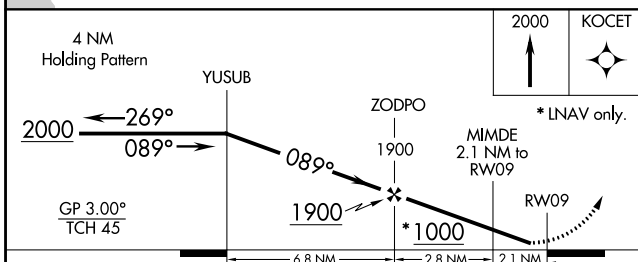
**MISSED APPROACH:**  
Climb to 2000 direct KOCET and hold.

AWOS-3 <b>118.525</b>	BOSTON CENTER <b>135.25 377.1</b>	UNICOM <b>122.8 (CTAF)</b>
--------------------------	--------------------------------------	-------------------------------



Procedure NA for arrival at WILRD on V29 southwest bound.

ELEV 302	<b>D</b>	TDZE 292
----------	----------	----------



CATEGORY	A	B	C	D
LPV DA		542-1	250 (300-1)	
LNAV/DA VNAV		767-1 3/8	475 (500-1 3/8)	
LNAV MDA	740-1	448 (500-1)	740-1 3/8	448 (500-1 3/8)
<b>C</b> CIRCLING	760-1 458 (500-1)	1000-1 698 (700-1)	1000-2 698 (700-2)	1000-2 1/4 698 (700-2 1/4)

REIL Rwy 27  
HIRL Rwy 9-27

NE-2, 17 AUG 2017 to 14 SEP 2017

NE-2, 17 AUG 2017 to 14 SEP 2017