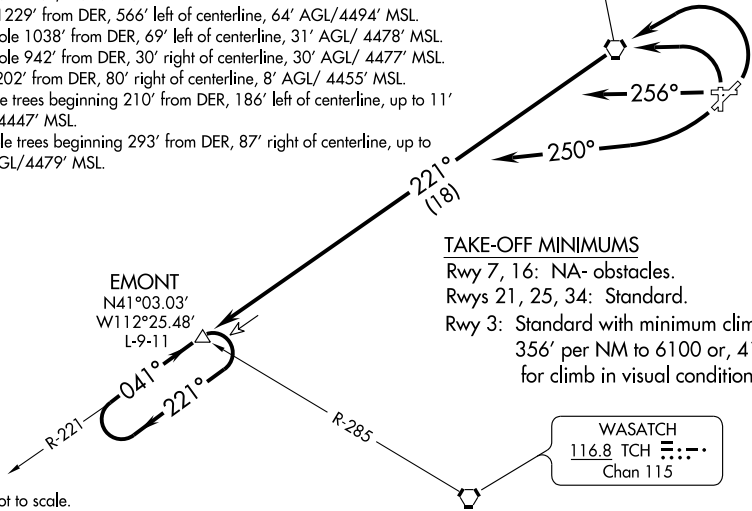
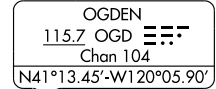


TAKE-OFF OBSTACLE NOTES

- Rwy 3: Multiple trees beginning 376' from DER, 62' left of centerline, up to 42' AGL/4451' MSL.
Tree 430' from DER, 503' right of centerline, 46' AGL/4455' MSL.
Flagpole 348' from DER, 583' right of centerline, 42' AGL/4451' MSL.
Lightpole 241' from DER, 535' left of centerline, 38' AGL/4447' MSL.
Pole 628' from DER, 611' right of centerline, 45' AGL/ 4454' MSL.
OL on DME 195' from DER, 268' right of centerline, 17' AGL/ 4426' MSL.
Road 231' from DER, 470' right of centerline, 14' AGL/ 4423' MSL.
Lightpole 396' from DER, 385' right of centerline, 16' AGL/ 4425' MSL.
Road 158' from DER, 307' left of centerline, 10' AGL/4419' MSL.
- Rwy 21: Multiple trees and poles beginning 702' from DER, 6' left of centerline, up to 98' AGL/4570' MSL.
Multiple trees beginning 2001' from DER, 421' right of centerline, up to 89' AGL/ 4561' MSL.
Rod on building 2465' from DER, 858' left of centerline, 62' AGL/4541' MSL.
- Rwy 25: Multiple trees and bushes beginning 188' from DER, 244' left of centerline, up to 81' AGL/ 4528' MSL.
Tank 1229' from DER, 566' left of centerline, 64' AGL/4494' MSL.
Lightpole 1038' from DER, 69' left of centerline, 31' AGL/ 4478' MSL.
Lightpole 942' from DER, 30' right of centerline, 30' AGL/ 4477' MSL.
Bush 202' from DER, 80' right of centerline, 8' AGL/ 4455' MSL.
- Rwy 34: Multiple trees beginning 210' from DER, 186' left of centerline, up to 11' AGL/4447' MSL.
Multiple trees beginning 293' from DER, 87' right of centerline, up to 43' AGL/4479' MSL.

ATIS 125.55
GND CON 121.7
OGDEN TOWER * 118.7 253.5
SALT LAKE CITY DEP CON 121.1 319.25



NOTE: Chart not to scale.

TAKE-OFF MINIMUMS

- Rwy 7, 16: NA- obstacles.
- Rwys 21, 25, 34: Standard.
- Rwy 3: Standard with minimum climb of 356' per NM to 6100 or, 4100-3 for climb in visual conditions.

DEPARTURE ROUTE DESCRIPTION

TAKE-OFF RUNWAY 3: Climbing left turn direct OGD VORTAC then via OGD R-221 to EMONT INT/ OGD 18 DME, thence.... Or, climb in visual conditions to cross OGD VORTAC southwest bound at or above 8500, then on OGD R-221 to EMONT INT/ OGD 18 DME, thence....

TAKE-OFF RUNWAY 21: Climbing right turn heading 250° to intercept OGD R-221 to EMONT INT/ OGD 18 DME, thence....

TAKE-OFF RUNWAY 25: Climb heading 256° to intercept OGD R-221 to EMONT INT/ OGD 18 DME, thence....

TAKE-OFF RUNWAY 34: Climbing left turn direct OGD VORTAC then via OGD R-221 to EMONT INT/ OGD 18 DME, thence....

....Climb in EMONT INT holding pattern to MEA/MCA for assigned route of flight.

SW-4, 19 NOV 2009 to 17 DEC 2009

SW-4, 19 NOV 2009 to 17 DEC 2009