

AGUDE FIVE ARRIVAL
(AGUDE:AGUDE5) 120CT17

AGUDE FIVE ARRIVAL
17285

NOTE: Chart not to scale.

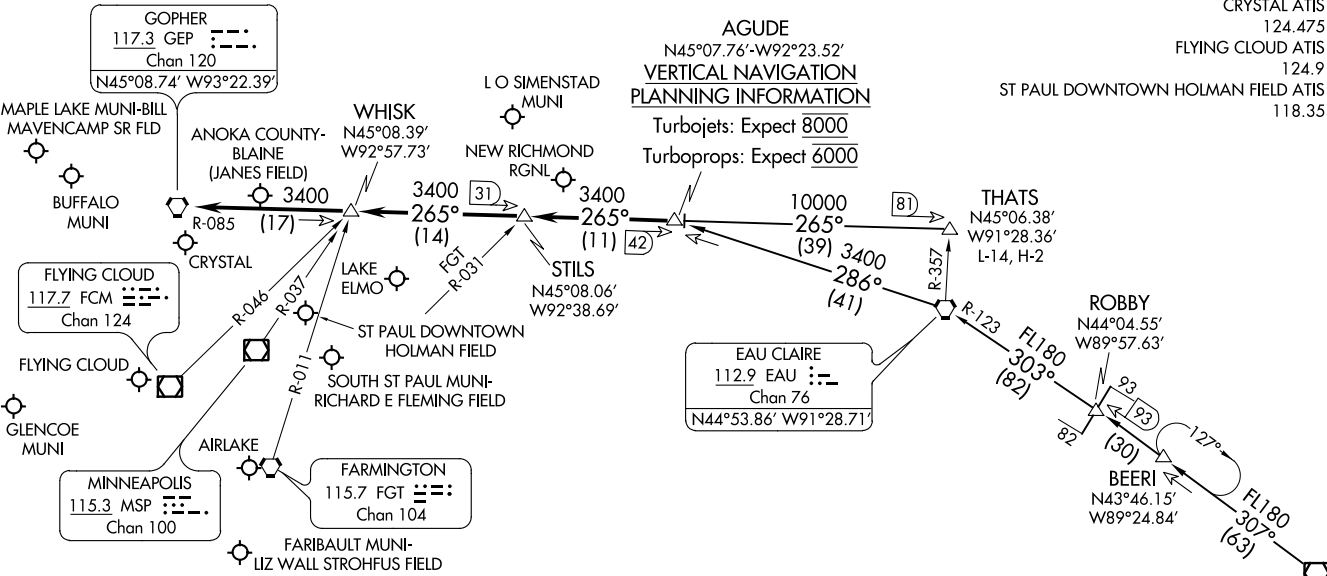
NOTE: DME and RADAR required.

MINNEAPOLIS APP CON
121.2 335.5
ANOKA COUNTY BLAINE (JANES FIELD) ATIS
120.625
CRYSTAL ATIS
124.475
FLYING CLOUD ATIS
124.9
ST PAUL DOWNTOWN HOLMAN FIELD ATIS
118.35

AGUDE
N45°07.76'-W92°23.52'

VERTICAL NAVIGATION
PLANNING INFORMATION

Turbojets: Expect 8000
Turboprops: Expect 6000



ARRIVAL ROUTE DESCRIPTION

BADGER TRANSITION (BAE.AGUDE5): From over BAE VOR/DME on BAE R-307 to ROBBY INT then on EAU R-123 to EAU VORTAC, then on EAU R-286 to AGUDE/EAU 41 DME. Thence. . . .

THATS TRANSITION (THATS.AGUDE5): From over THATS INT on GEP R-085 to AGUDE/GEP 42 DME. Thence. . . .

. . . . From over AGUDE/GEP 42 DME via GEP R-085 to GEP VORTAC, then expect RADAR vectors to final approach course.

BADGER
116.4 BAE
Chan 111
N43°07.01' W88°17.06'
L-28, H-5

AL-263 (FAA)

MINNEAPOLIS-ST PAUL, MINNESOTA

MINNEAPOLIS-ST PAUL, MINNESOTA

ARRIVAL ROUTE DESCRIPTION

FORT DODGE TRANSITION (FOD.TWOLF3): From over FOD VORTAC on FOD R-032 to TWOLF/FOD 52 DME, thence

. . . .from over TWOLF/GEP 112 DME via GEP R-178 to KGEED/GEP 84 DME, then as depicted to TRGET INT/GEP 55 DME. Thence. . . .

LANDING MSP RUNWAYS 12L/R: From over TRGET INT via FGT R-201 to FGT VORTAC, then via FGT R-330 to SLIKK INT/FGT 11 DME, then via heading 300° for RADAR vectors to final approach course.

LANDING MSP RUNWAYS 30L/R, 4, 22, 17, 35: From over TRGET INT on FGT R-201 to FGT VORTAC, then via RADAR vectors to final approach course.

LANDING ALL OTHER AIRPORTS: From over TRGET INT via FCM R-180 to FCM VOR/DME, then expect RADAR vectors to final approach course.

NC-1, 07 DEC 2017 to 04 JAN 2018

NC-1, 07 DEC 2017 to 04 JAN 2018