

# RNAV (GPS) RWY 23

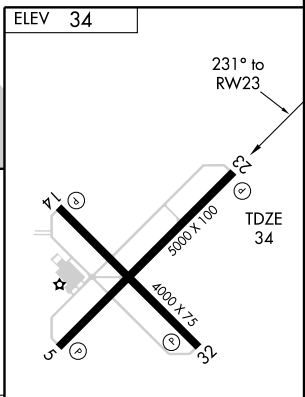
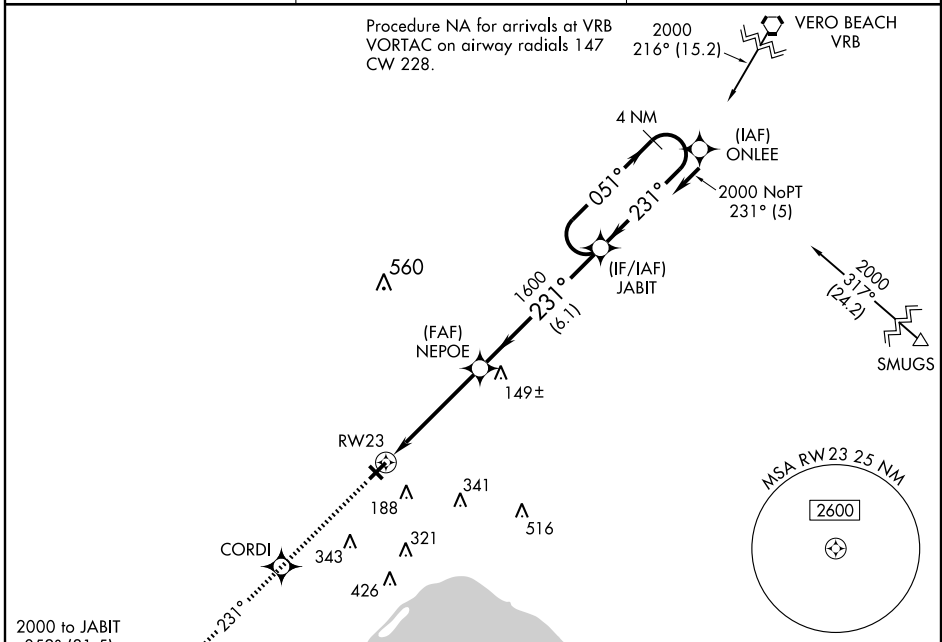
OKEECHOBEE COUNTY (OBE)

APP CRS <b>231°</b>	Rwy Idg <b>5000</b>
	TDZE <b>34</b>
	Apt Elev <b>34</b>

**▲** If local altimeter setting not received, use Vero Beach altimeter setting and increase all MDAs 80 feet. Procedure NA at night. DME/DME RNP-0.3 NA. VDP NA when using Vero Beach altimeter setting.

MISSED APPROACH: Climb to 2000 direct CORDI and via 231° track to FINLO and hold.

AWOS-3 <b>118.675</b>	MIAMI CENTER <b>132.25 370.9</b>	UNICOM <b>123.0 (CTAF)</b>
--------------------------	-------------------------------------	-------------------------------



2000	CORDI	FINLO
↑	TRK 231°	◆

CATEGORY	A	B	C	D
LNVA MDA	400-1 366 (400-1)		400-1¼ 366 (400-1¼)	
CIRCLING	500-1 466 (500-1)	500-1½ 466 (500-1½)		600-2 566 (600-2)

MIRL Rwy 5-23

REIL Rws 5 and 23

SE-3, 19 NOV 2009 to 17 DEC 2009

SE-3, 19 NOV 2009 to 17 DEC 2009

# RNAV (GPS) RWY 5

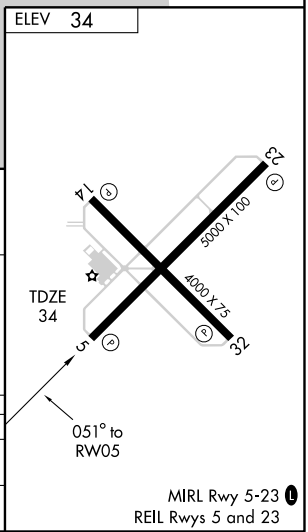
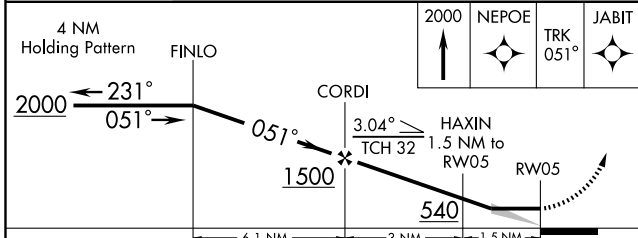
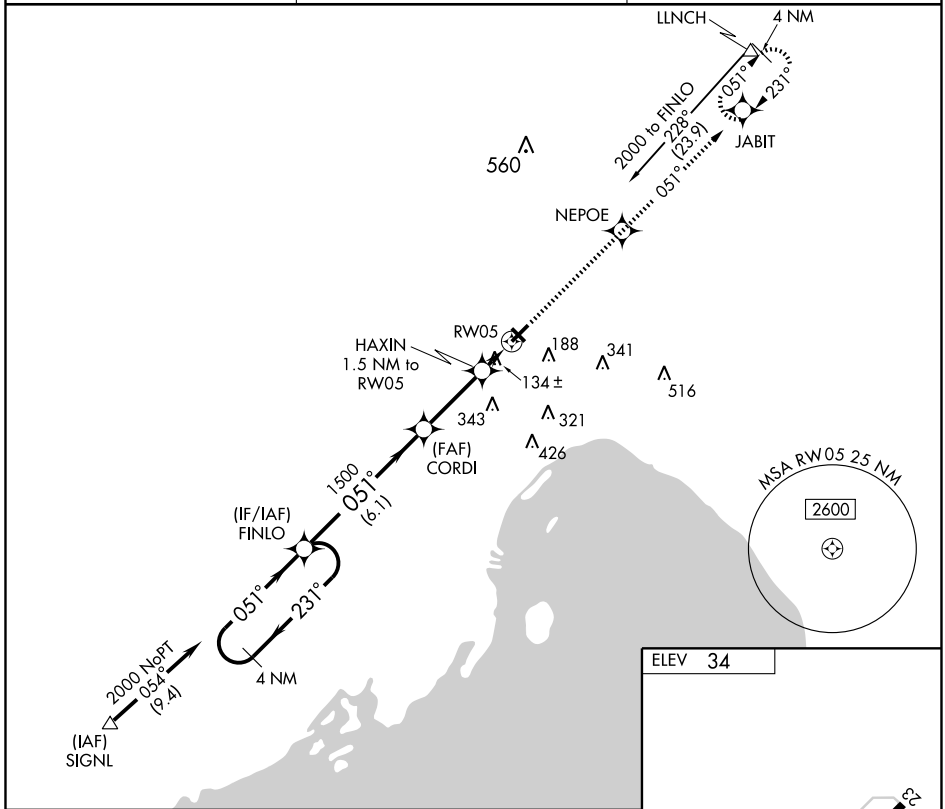
OKEECHOBEE COUNTY (OBE)

APP CRS	Rwy Idg	<b>5000</b>
<b>051°</b>	TDZE	<b>34</b>
	Apt Elev	<b>34</b>

**▲** If local altimeter setting not received, use Vero Beach altimeter setting and increase all MDAs 80 feet. Procedure NA at night. DME/DME RNP-0.3 NA.

**MISSED APPROACH:** Climb to 2000 direct NEPOE and via 051° track to JABIT and hold.

AWOS-3 <b>118.675</b>	MIAMI CENTER <b>132.25 370.9</b>	UNICOM <b>123.0 (CTAF) ①</b>
--------------------------	-------------------------------------	---------------------------------



CATEGORY	A	B	C	D
LNVA MDA	400-1 366 (400-1)		400-1¼ 366 (400-1¼)	
CIRCLING	500-1 466 (500-1)	500-1½ 466 (500-1½)		600-2 566 (600-2)

SE-3, 19 NOV 2009 to 17 DEC 2009

SE-3, 19 NOV 2009 to 17 DEC 2009