

# RNAV (GPS) RWY 23

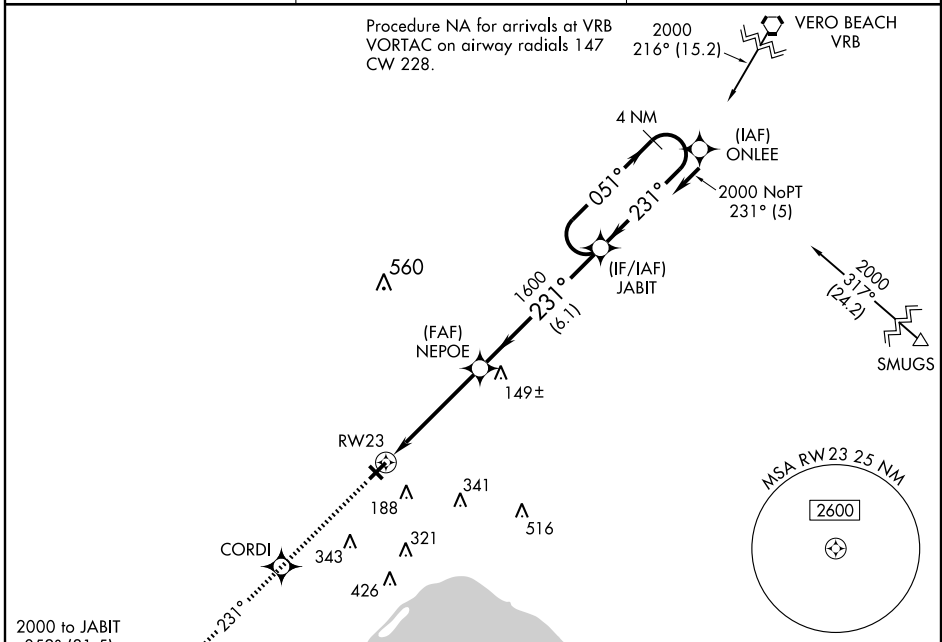
OKEECHOBEE COUNTY (OBE)

APP CRS <b>231°</b>	Rwy Idg <b>5000</b>
	TDZE <b>34</b>
	Apt Elev <b>34</b>

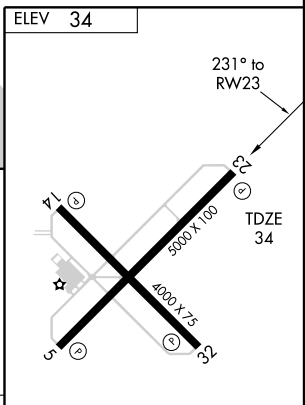
**▲** If local altimeter setting not received, use Vero Beach altimeter setting and increase all MDAs 80 feet. Procedure NA at night. DME/DME RNP-0.3 NA. VDP NA when using Vero Beach altimeter setting.

MISSED APPROACH: Climb to 2000 direct CORDI and via 231° track to FINLO and hold.

AWOS-3 <b>118.675</b>	MIAMI CENTER <b>132.25 370.9</b>	UNICOM <b>123.0 (CTAF)</b>
--------------------------	-------------------------------------	-------------------------------



2000	CORDI	FINLO
↑	TRK 231°	◆



CATEGORY	A	B	C	D
LNVA MDA	400-1 366 (400-1)		400-1¼ 366 (400-1¼)	
CIRCLING	500-1 466 (500-1)	500-1½ 466 (500-1½)		600-2 566 (600-2)

MIRL Rwy 5-23

REIL Rws 5 and 23

SE-3, 19 NOV 2009 to 17 DEC 2009

SE-3, 19 NOV 2009 to 17 DEC 2009

# RNAV (GPS) RWY 5

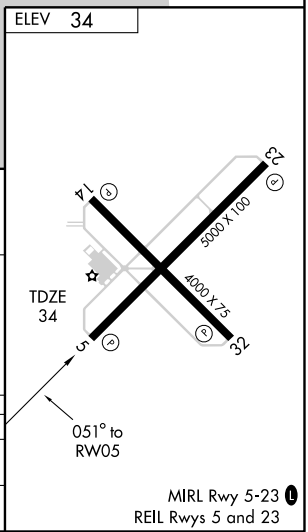
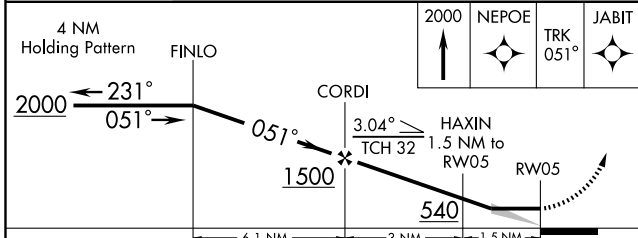
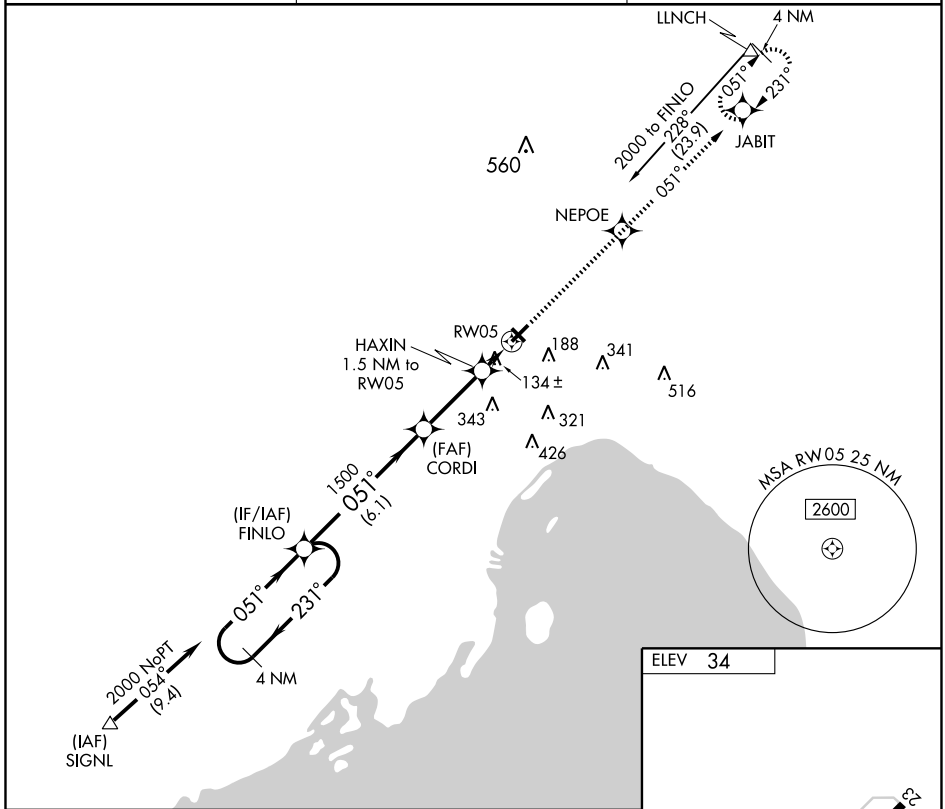
OKEECHOBEE COUNTY (OBE)

APP CRS	Rwy Idg	<b>5000</b>
<b>051°</b>	TDZE	<b>34</b>
	Apt Elev	<b>34</b>

**▲** If local altimeter setting not received, use Vero Beach altimeter setting and increase all MDA's 80 feet. Procedure NA at night. DME/DME RNP-0.3 NA.

**MISSED APPROACH:** Climb to 2000 direct NEPOE and via 051° track to JABIT and hold.

AWOS-3 <b>118.675</b>	MIAMI CENTER <b>132.25 370.9</b>	UNICOM <b>123.0 (CTAF)</b>
--------------------------	-------------------------------------	-------------------------------



	4 NM Holding Pattern		2000	NEPOE	JABIT
	FINLO			TRK 051°	
	CORDI		1500		
	HAXIN		540		
	RW05				
	6.1 NM		3 NM		1.5 NM
CATEGORY	A	B	C	D	
LNVA MDA	400-1 366 (400-1)		400-1¼ 366 (400-1¼)		
CIRCLING	500-1	466 (500-1)	500-1½ 466 (500-1½)	600-2 566 (600-2)	

SE-3, 19 NOV 2009 to 17 DEC 2009

SE-3, 19 NOV 2009 to 17 DEC 2009



INSTRUMENT APPROACH PROCEDURE CHARTS

**A** IFR ALTERNATE AIRPORT MINIMUMS

Standard alternate minimums for non precision approaches are 800-2 (NDB, VOR, LOC, TACAN, LDA, VORTAC, VOR/DME, ASR or WAAS LNAV); for precision approaches 600-2 (ILS or PAR). Airports within this geographical area that require alternate minimums other than standard or alternate minimums with restrictions are listed below. NA - means alternate minimums are not authorized due to unmonitored facility or absence of weather reporting service. Civil pilots see FAR 91. IFR Alternate Airport Minimums: Ceiling and Visibility Minimums not applicable to USA/USN/USAF. Pilots must review the IFR Alternate Airport Minimums Notes for alternate airfield suitability.

NAME ALTERNATE MINIMUMS

**APALACHICOLA, FL**

APALACHICOLA RGNL ..... RNAV (GPS)-A  
RNAV (GPS)-B  
RNAV (GPS) Rwy 6  
RNAV (GPS) Rwy 13  
RNAV (GPS) Rwy 24  
RNAV (GPS) Rwy 31

NA when local weather not available.

**BARTOW, FL**

BARTOW MUNI ..... RNAV (GPS) Rwy 5  
RNAV (GPS) Rwy 9L  
RNAV (GPS) Rwy 23  
RNAV (GPS) Rwy 27R

NA when local weather not available.

**BROOKSVILLE, FL**

HERNANDO COUNTY ..... RNAV (GPS) Rwy 3  
RNAV (GPS) Rwy 9  
RNAV (GPS) Rwy 21  
RNAV (GPS) Rwy 27

NA when local weather not available.

**CHARLOTTE AMALIE, ST. THOMAS, VI**

CYRIL E. KING ..... ILS Rwy 10<sup>1</sup>, 700-2  
VOR-A, 1200-3

<sup>1</sup>NA when control tower closed.

**CHRISTIANSTED, ST. CROIX, VI**

HENRY E ROHLSSEN ..... ILS or LOC Rwy 10<sup>1</sup>  
NDB Rwy 10<sup>12</sup>  
RNAV (GPS) Rwy 10<sup>3</sup>  
VOR Rwy 28<sup>14</sup>

<sup>1</sup>NA when control tower closed.

<sup>2</sup>Category A,B, 1200-2; Category C,D, 1200-3.

<sup>3</sup>Category A,B, 1000-2; Category C,D, 1000-3.

<sup>4</sup>Category A,B, 900-2; Category C,D, 900-3.

NAME ALTERNATE MINIMUMS

**CRESTVIEW, FL**

BOB SIKES ..... ILS Rwy 17<sup>12</sup>  
RNAV (GPS) Rwy 17<sup>1</sup>  
RNAV (GPS) Rwy 35<sup>1</sup>  
VOR-A<sup>3</sup>

<sup>1</sup>NA when local weather not available.

<sup>2</sup>Category D, 700-2.

<sup>3</sup>Category D, 800-2½.

**DAYTONA BEACH, FL**

DAYTONA BEACH INTL.. ILS or LOC Rwy 7L<sup>1</sup>  
LOC BC Rwy 25R<sup>1</sup>  
VOR Rwy 16<sup>2</sup>

<sup>1</sup>NA when local weather not available.

<sup>2</sup>Category D, 800-2½.

**DELAND, FL**

DELAND MUNI- SIDNEY H.  
TAYLOR FIELD ..... RNAV (GPS) Rwy 5  
RNAV (GPS) Rwy 12  
RNAV (GPS) Rwy 23  
RNAV (GPS) Rwy 30

NA when local weather not available.

**FORT LAUDERDALE, FL**

FORT LAUDERDALE  
EXECUTIVE ..... ILS or LOC Rwy 8  
ILS, Category D, 700-2.

FORT LAUDERDALE-HOLLYWOOD

INTL ..... ILS or LOC Rwy 9L<sup>1</sup>  
ILS or LOC Rwy 27R<sup>1</sup>  
LOC Rwy 9R<sup>2</sup>  
LOC/DME Rwy 13<sup>2</sup>  
RNAV (GPS) Rwy 13<sup>2</sup>  
RNAV (GPS) Y Rwy 9R<sup>2</sup>  
RNAV (GPS) Z Rwy 9L<sup>2</sup>  
RNAV (GPS) Rwy 27L<sup>2</sup>  
RNAV (GPS) Y Rwy 27R<sup>2</sup>  
RNAV (GPS) Rwy 31<sup>2</sup>  
RNAV (RNP) Z Rwy 27R, 800-2½  
VOR Rwy 27R<sup>2</sup>

<sup>1</sup>ILS, Categories A,B,C, 700-2, Category D, 700-2½. LOC, Category D, 800-2½.

<sup>2</sup>Category D, 800-2½.

19 NOV 2009 to 17 DEC 2009

19 NOV 2009 to 17 DEC 2009





# ALTERNATE MINS

E2



**NAME** ALTERNATE MINIMUMS  
**FORT MYERS, FL**  
 PAGE FIELD ..... ILS Rwy 5  
 NA when FMY tower closed.

**SOUTHWEST**  
 FLORIDA INTL ..... ILS or LOC Rwy 6<sup>12</sup>  
 RNAV (GPS) Rwy 13<sup>3</sup>

<sup>1</sup>NA when control tower closed.  
<sup>2</sup>ILS, Category E, 700-2½; LOC, Category E, 800-2½.  
<sup>3</sup>NA when local weather not available.

**FORT PIERCE, FL**  
 ST LUCIE  
 COUNTY INTL ..... ILS or LOC Rwy 10R<sup>1</sup>  
 NDB Rwy 28L<sup>1</sup>  
 RNAV (GPS) Rwy 10R  
 RNAV (GPS) Rwy 14  
 RNAV (GPS) Rwy 28L  
 VOR/DME Rwy 14

NA when local weather not available.  
<sup>1</sup>NA when control tower closed.

**GAINESVILLE, FL**  
 GAINESVILLE RGNL ..... RNAV (GPS) Rwy 7<sup>1</sup>  
 RNAV (GPS) Rwy 25<sup>1</sup>  
 VOR Rwy 25<sup>2</sup>

<sup>1</sup>NA when local weather not available.  
<sup>2</sup>Categories A,B, 900-2; Category C 900-2½.

**JACKSONVILLE, FL**  
 CECIL FIELD ..... ILS or LOC RWY 36R  
 NA when control tower closed.  
 NA when local weather not available.

**CRAIG MUNI** ..... ILS or LOC Rwy 32  
 RNAV (GPS) Rwy 14<sup>1</sup>  
 RNAV (GPS) Rwy 32  
 VOR Rwy 14<sup>1</sup>  
 VOR/DME Rwy 32

NA when local weather not available.  
<sup>1</sup>Category C, 800-2½; Category D, 800-2½.

**JACKSONVILLE INTL** ..... ILS Rwy 7<sup>1</sup>  
 ILS Rwy 13<sup>2</sup>  
 ILS or LOC Rwy 25<sup>2</sup>  
 RADAR-1<sup>3</sup>  
 RNAV (GPS) Rwy 31<sup>4</sup>  
 VOR/DME Rwy 31<sup>3</sup>

<sup>1</sup>ILS, Category D, 700-2, Category E, 800-2½.  
 LOC, Category E, 800-2½.  
<sup>2</sup>ILS, Category D, 700-2.  
<sup>3</sup>Category E, 800-2½.  
<sup>4</sup>NA when local weather not available.

**NAME** ALTERNATE MINIMUMS  
**KEY WEST, FL**  
 KEY WEST INTL ..... RNAV (GPS) Rwy 9  
 RNAV (GPS) Rwy 27  
 NA when local weather not available.

**LAKELAND, FL**  
 LAKELAND LINDER RGNL . ILS or LOC Rwy 5  
 NDB Rwy 5  
 RNAV (GPS) Rwy 5  
 RNAV (GPS) Rwy 9  
 RNAV (GPS) Rwy 23  
 RNAV (GPS) Rwy 27  
 VOR Rwy 9  
 VOR Rwy 27<sup>1</sup>

NA when control tower closed.  
<sup>1</sup>Category C 800-2½; Category D, 800-2½.

**LEESBURG, FL**  
 LEESBURG INTL ..... RNAV (GPS) Rwy 3  
 RNAV (GPS) Rwy 13  
 RNAV (GPS) Rwy 31  
 NA when local weather not available.

**MARATHON, FL**  
 THE FLORIDA KEYS MARATHON ..... NDB-A  
 RNAV (GPS) Rwy 7  
 RNAV (GPS) Rwy 25  
 RNAV (GPS) Rwy 31  
 NA when local weather not available.

**MARCO ISLAND, FL**  
 MARCO ISLAND ..... VOR/DME Rwy 17  
 Category D, 800-2½.

**MAYAGUEZ, PR**  
 EUGENIO MARIA  
 DE HOSTOS ..... VOR or GPS Rwy 9  
 Categories A,B, 1000-2; Category C, 1000-3.  
 NA except for operators with approved weather reporting service.

**MERRITT ISLAND, FL**  
 MERRITT ISLAND ..... RNAV (GPS) Rwy 11  
 NA when local weather not available.

19 NOV 2009 to 17 DEC 2009

19 NOV 2009 to 17 DEC 2009



# ALTERNATE MINS

E2

SE-3





# ALTERNATE MINS

E3



NAME ALTERNATE MINIMUMS

## MIAMI, FL

KENDALL-TAMIAMI

EXECUTIVE ..... ILS or LOC Rwy 9R<sup>1</sup>  
RNAV (GPS) Rwy 9L  
RNAV (GPS) Rwy 9R  
RNAV (GPS) Rwy 27L  
RNAV (GPS) Rwy 27R

NA when local weather not available.

<sup>1</sup>Category D, 700-2.

MIAMI INTL ..... ILS or LOC Rwy 27<sup>1</sup>  
ILS or LOC Rwy 30<sup>2</sup>

<sup>1</sup>NA when local weather not available.

<sup>2</sup>Categories A,B, 900-2; Category C 900-2½;

Category D, 900-2¾.

OPA LOCKA ..... ILS Rwy 9L  
ILS Rwy 12  
ILS/DME Rwy 27R

NA when control tower closed.

## OCALA, FL

OCALA INTL-JIM

TAYLOR FIELD.. ..... ILS or LOC/DME Rwy 36  
RNAV (GPS) Rwy 18  
RNAV (GPS) Rwy 36  
VOR Rwy 36

NA when local weather not available.

## OKEECHOBEE, FL

OKEECHOBEE COUNTY... RNAV (GPS) Rwy 5  
RNAV (GPS) Rwy 23

NA when local weather not available.

## ORLANDO, FL

EXECUTIVE ..... ILS or LOC Rwy 7  
LOC BC Rwy 25  
VOR/DME Rwy 7  
VOR/DME Rwy 25

<sup>1</sup>Category D, 800-2½.

ORLANDO INTL ..... ILS or LOC Rwy 17L  
ILS or LOC Rwy 17R  
ILS or LOC Rwy 18R  
ILS or LOC Rwy 35L  
ILS or LOC Rwy 35R  
ILS or LOC Rwy 36R

ILS, 700-2.

NAME ALTERNATE MINIMUMS

## ORLANDO, FL (CON'T)

ORLANDO SANFORD

INTL ..... ILS or LOC Rwy 9L<sup>12</sup>  
ILS or LOC Rwy 9R<sup>12</sup>  
ILS or LOC Rwy 27R<sup>12</sup>  
NDB-B<sup>2</sup>  
NDB-C<sup>2</sup>  
RNAV (GPS) Rwy 9L<sup>1</sup>  
RNAV (GPS) Rwy 9R<sup>1</sup>  
RNAV (GPS) Rwy 27R<sup>1</sup>

<sup>1</sup>NA when local weather not available.

<sup>2</sup>NA when control tower closed.

## PANAMA CITY, FL

PANAMA CITY-BAY

COUNTY INTL ..... ILS Rwy 14<sup>12</sup>  
NDB Rwy 14<sup>1</sup>  
VOR or TACAN-A<sup>3</sup>  
VOR or TACAN Rwy 14<sup>1</sup>  
VOR or TACAN Rwy 32<sup>1</sup>  
RNAV (GPS) Rwy 14<sup>4</sup>  
RNAV (GPS) Rwy 32<sup>4</sup>

<sup>1</sup>NA when control tower closed.

<sup>2</sup>ILS, Category D, 700-2.

<sup>3</sup>Category D, 800-2¼.

<sup>4</sup>NA when local weather not available.

## PENSACOLA, FL

PENSACOLA RGNL ..... ILS or LOC Rwy 17<sup>1</sup>  
VOR Rwy 8<sup>2</sup>

<sup>1</sup>NA when Pensacola tower closed.

<sup>2</sup>Category D, 800-2¼.

## POMPANO BEACH, FL

POMPANO BEACH AIRPARK ..... LOC Rwy 15<sup>1</sup>  
RNAV (GPS) Rwy 6  
RNAV (GPS) Rwy 15  
RNAV (GPS) Rwy 24  
RNAV (GPS) Rwy 33

NA when local weather not available.

<sup>1</sup>NA when control tower closed.

## PUNTA GORDA, FL

CHARLOTTE COUNTY ..... RNAV (GPS) Rwy 4  
RNAV (GPS) Rwy 15  
RNAV (GPS) Rwy 22  
RNAV (GPS) Rwy 33  
VOR Rwy 4  
VOR Rwy 22

NA when local weather not available.

## ST. AUGUSTINE, FL

ST. AUGUSTINE ..... RNAV (GPS) Rwy 13<sup>1</sup>  
RNAV (GPS) Rwy 31<sup>1</sup>  
VOR Rwy 13<sup>2</sup>  
VOR Rwy 31<sup>2</sup>

<sup>1</sup>NA when local weather not available.

<sup>2</sup>NA when control tower closed.

19 NOV 2009 to 17 DEC 2009

19 NOV 2009 to 17 DEC 2009



# ALTERNATE MINS

E3

SE-3



