

15120

ARGUS THREE DEPARTURE (ARGUS3•ARGUS)

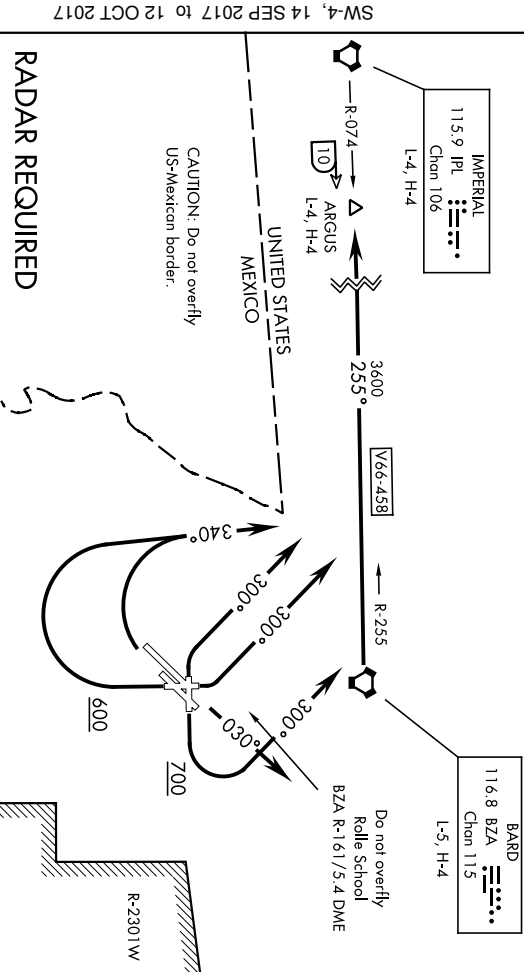
YUMA MCAS/YUMA INTL (KNYL)
YUMA, ARIZONA

AITS ★
118.8 273.5
CLNC DEL
118.0 336.4
GND CON
121.9 314.0

A
2663

SHL-511 [USN]

YUMA TOWER ★
119.3 377.075
YUMA DEP CON
125.55 282.325
ASOS
256.4



SW-4, 14 SEP 2017 to 12 OCT 2017

SW-4, 14 SEP 2017 to 12 OCT 2017

RADAR REQUIRED

DEPARTURE ROUTE DESCRIPTION

TAKE-OFF RWY 3L/R: Cross DER at or above 35' AGL/228' MSL, then fly hdg 030°, expect RADAR vectors to intercept BZA VORTAC R-255. Thence...

TAKE-OFF RWY 8: Climb to 700, then climbing left turn heading 300°, expect RADAR vectors to intercept BZA VORTAC R-255. Thence....

TAKE-OFF RWY 17: Climb to 600, then climbing right turn heading 340°, expect RADAR vectors to intercept BZA VORTAC R-255. Thence....

TAKE-OFF RWY 21L/R: Climbing right turn hdg 340°, expect RADAR vectors to intercept BZA VORTAC R-255. Thence....

TAKE-OFF RWY 26: Climbing right turn heading 300°, expect RADAR vectors to intercept BZA VORTAC R-255. Thence....

TAKE-OFF RWY 35: Climbing left turn heading 300°, then expect RADAR vectors to intercept BZA VORTAC R-255. Thence....

...via BZA R-255 to ARGUS, then via assigned route. Maintain assigned altitude. Expect clearance to filed altitude/flight level 10 minutes after departure.

ARGUS THREE DEPARTURE (ARGUS3•ARGUS)

YUMA, ARIZONA
YUMA MCAS/YUMA INTL (KNYL)

15120

CARGO EIGHT DEPARTURE (CARGO8 • CARGO)

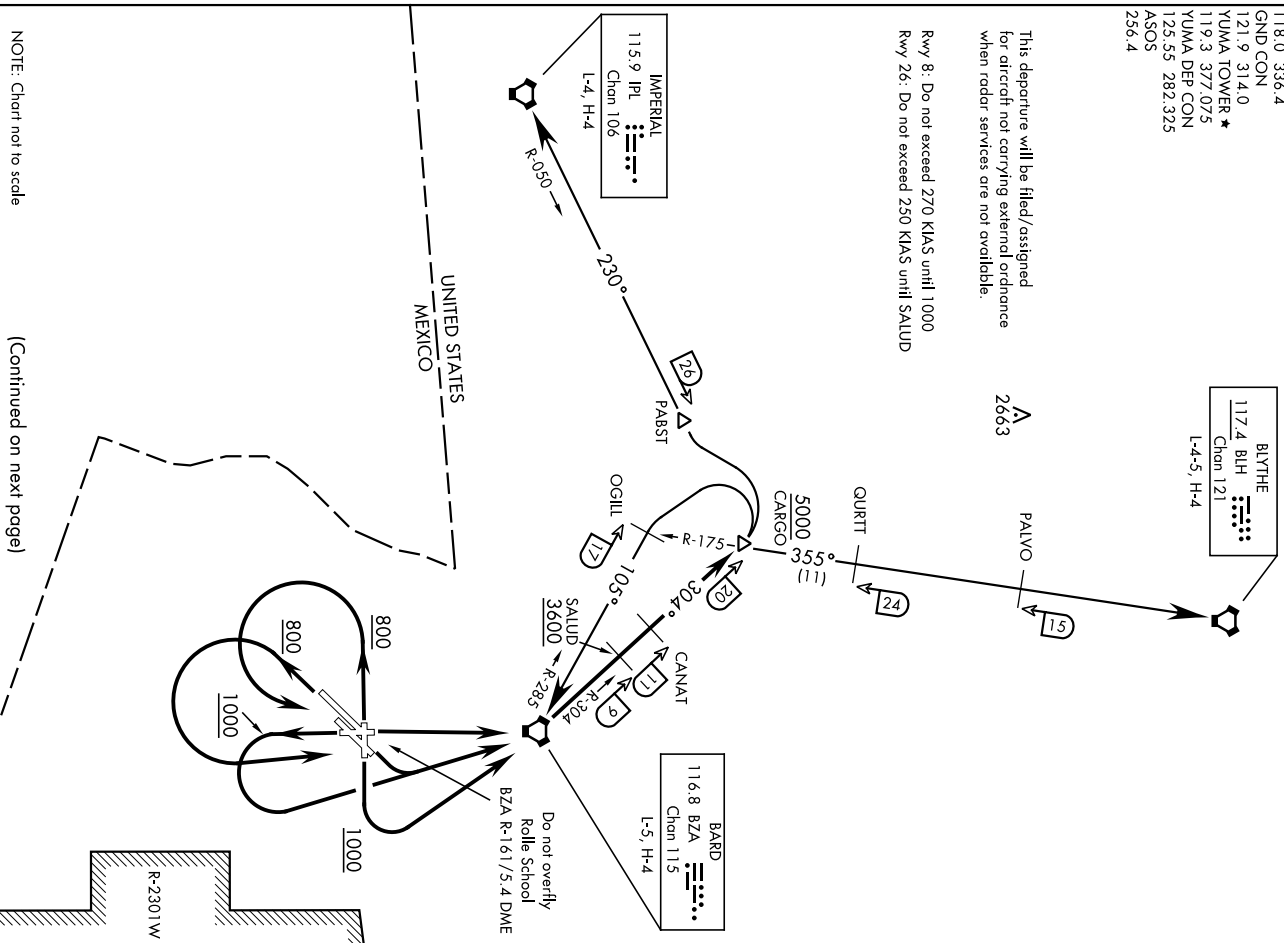
YUMA MCAS/YUMA INTL (KNYL)
YUMA, ARIZONA

SHL-511 [USN]

- ATIS ★ 118.8 273.5
- CINC DEL 118.0 336.4
- GND CON 121.9 314.0
- YUMA TOWER ★ 121.9 314.0
- YUMA DEP CON 119.3 377.075
- YUMA DEP CON 125.55 282.325
- ASOS 256.4

This departure will be filed/assigned for aircraft not carrying external ordnance when radar services are not available.

Rwy 8: Do not exceed 270 KIAS until 1000
Rwy 26: Do not exceed 250 KIAS until SALUD



SW-4, 14 SEP 2017 to 12 OCT 2017

SW-4, 14 SEP 2017 to 12 OCT 2017

NOTE: Chart not to scale

(Continued on next page)

CARGO EIGHT DEPARTURE (CARGO8 • CARGO)

YUMA, ARIZONA
YUMA MCAS/YUMA INTL (KNYL)

15120

CARGO EIGHT DEPARTURE (CARGO8•CARGO)

YUMA MCAS/YUMA INTL (KNYL)
YUMA, ARIZONA

SHL-511 (USN)

DEPARTURE ROUTE DESCRIPTION

TAKE-OFF RWY 3L/R: Cross DER at or above 35' AGL/228' MSL, then climbing left turn to intercept BZA VORTAC R-304 to CARGO. Then via assigned route, maintain assigned altitude. Expect clearance to filed altitude 10 minutes after departure.

TAKE-OFF RWY 8/17: Climb to 1000, then climbing left turn direct BZA VORTAC. Then, via BZA R-304 to CARGO. Thence...

TAKE-OFF RWY 21L/R, 26: Climb to 800, then climbing left turn direct BZA VORTAC. Then via BZA R-304 to CARGO. Thence...

TAKE-OFF RWY 35: Climb direct BZA VORTAC, then via BZA R-304 to CARGO. Thence...

BARB TRANSITION (CARGO8•BZA): At CARGO, turn left to intercept BZA VORTAC R-285 to BZA, Max 250 KIAS until OGIIL.

BLYTHE TRANSITION (CARGO8•BLH): At CARGO, turn right to intercept BLH VORTAC R-175 to BLH.

IMPERIAL TRANSITION (CARGO8•IPL): At CARGO, turn left to intercept IPL VORTAC R-050 to IPL.

Then via assigned route. Maintain assigned altitude. Expect clearance to filed altitude 10 minutes after departure.

SW-4, 14 SEP 2017 to 12 OCT 2017

SW-4, 14 SEP 2017 to 12 OCT 2017

CARGO EIGHT DEPARTURE (CARGO8•CARGO)

YUMA, ARIZONA
YUMA MCAS/YUMA INTL (KNYL)

15120

HEEDS ONE DEPARTURE (HEEDS1 • HEEDS)

YUMA MCAS/YUMA INTL (KNYL)
YUMA, ARIZONA

ATIS *
118.8 273.5
CLNC DEL
118.0 336.4
GND CON
121.9 314.0

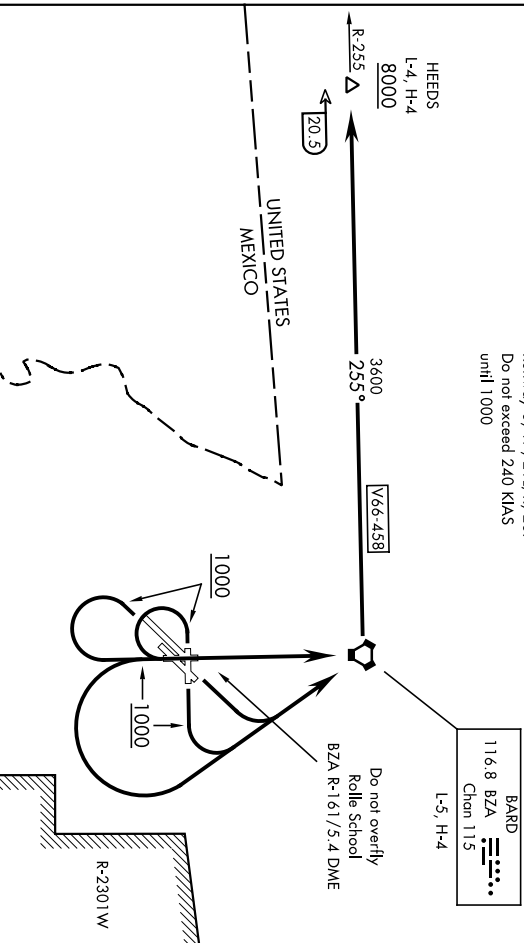
YUMA TOWER *
119.3 377.075
YUMA DEP CON
125.55 282.325
ASOS
256.4

A
2663

ATC Climb Rate to 8000

| Rwy | Knots | 60 | 120 | 180 | 240 | 300 | 360 |
|------------------|----------|-----|-----|------|------|------|------|
| 3L/R | V/V(fpm) | 343 | 686 | 1029 | 1372 | 1715 | 2058 |
| 8, 17, 21L/R, 26 | V/V(fpm) | 291 | 582 | 873 | 1164 | 1455 | 1746 |
| 35 | V/V(fpm) | 202 | 404 | 606 | 808 | 1010 | 1212 |

Runway 8, 17, 21L/R, 26:
Do not exceed 240 KIAS
until 1000



DEPARTURE ROUTE DESCRIPTION

TAKE-OFF Rwy 3L/R: Cross DER at or above 35' AGL/228' MSL, then climbing left turn to 8000 to intercept the BZA VORTAC R-255 to HEEDS. Cross HEEDS at or above 8000.

TAKE-OFF Rwy 8, 17, 21L/R, 26: Climb to 1000, then climbing left turn direct BZA VORTAC, then via BZA R-255 to HEEDS. Cross HEEDS at or above 8000.

TAKE-OFF Rwy 35: Climb to 8000 direct BZA VORTAC, then via BZA R-255 to HEEDS. Cross HEEDS at or above 8000.

Then via assigned route. Maintain assigned altitude. Expect clearance to filed altitude 10 minutes after departure.

SW-4, 14 SEP 2017 to 12 OCT 2017

SW-4, 14 SEP 2017 to 12 OCT 2017

HEEDS ONE DEPARTURE (HEEDS1 • HEEDS)

YUMA, ARIZONA
YUMA MCAS/YUMA INTL (KNYL)

15120

SHL-511 (USN)

MOHAK THREE DEPARTURE (MOHAK3•MOHAK)

YUMA MCAS/YUMA INTL (KNYL)
YUMA, ARIZONA

ATIS ★ 273.5
 CNLC DEL 118.0 336.4
 GND CON 121.9 314.0
 YUMA TOWER★ 119.3 327.075
 YUMA DEP CON 125.35 282.325
 ASOS 256.4

R-2306
 R-2307
 R-2308
 R-2309

CAUTION: Tethered Balloon
 A up to 15,000

BARD
 116.8 BZA
 Chon 11.5

Do not overfly
 Rolle School

BZA R-1617/5.4 DME

6000

07.5°

WARTT

6000

07.5°

MOHAK

L-5, H-4

32

R-075

86

R-247

GILA BEND
 116.6 GBN
 Chon 11.3

R-2301E

R-2301W

3158

RADAR REQUIRED
 (Rwy 3L/R, 17, 21L/R, 26)

800

800

1200

030°

030°

CAUTION: Do not overfly
 US-Mexican border.

Take-off mins Rwy 26: 200/1 1/2
 Rwy 26: Do not exceed 240 KIAS until 800.

DEPARTURE ROUTE DESCRIPTION

TAKE-OFF RWWY 3L/R: Cross DER at or above 35' AGL/228' MSL, then fly hdg 030°, expect RADAR vectors to intercept BZA VORTAC R-075. Thence...

TAKE-OFF RWWY 8: Climbing left turn hdg 050° to intercept BZA VORTAC R-075 to WARTT. Thence...

TAKE-OFF RWWY 17/26: Climb to 800, then climbing right turn direct BZA VORTAC. Thence...

TAKE-OFF RWWY 21L/R: Climb to 1200, then climbing right turn direct BZA VORTAC. Thence...

TAKE-OFF RWWY 35: Climb direct BZA VORTAC. Thence....

... via BZA R-075 to MOHAK INT. Then via assigned route. Maintain assigned altitude. Expect clearance to filed altitude/flight level 10 minutes after departure.

MOHAK THREE DEPARTURE (MOHAK3•MOHAK)

YUMA, ARIZONA
YUMA MCAS/YUMA INTL (KNYL)

SW-4, 14 SEP 2017 to 12 OCT 2017

SW-4, 14 SEP 2017 to 12 OCT 2017

15120

SHL-511 [USN]

YUMA MCAS/YUMA INTL (KNYL)

PICACHO THREE DEPARTURE (PIC3 • BLH)

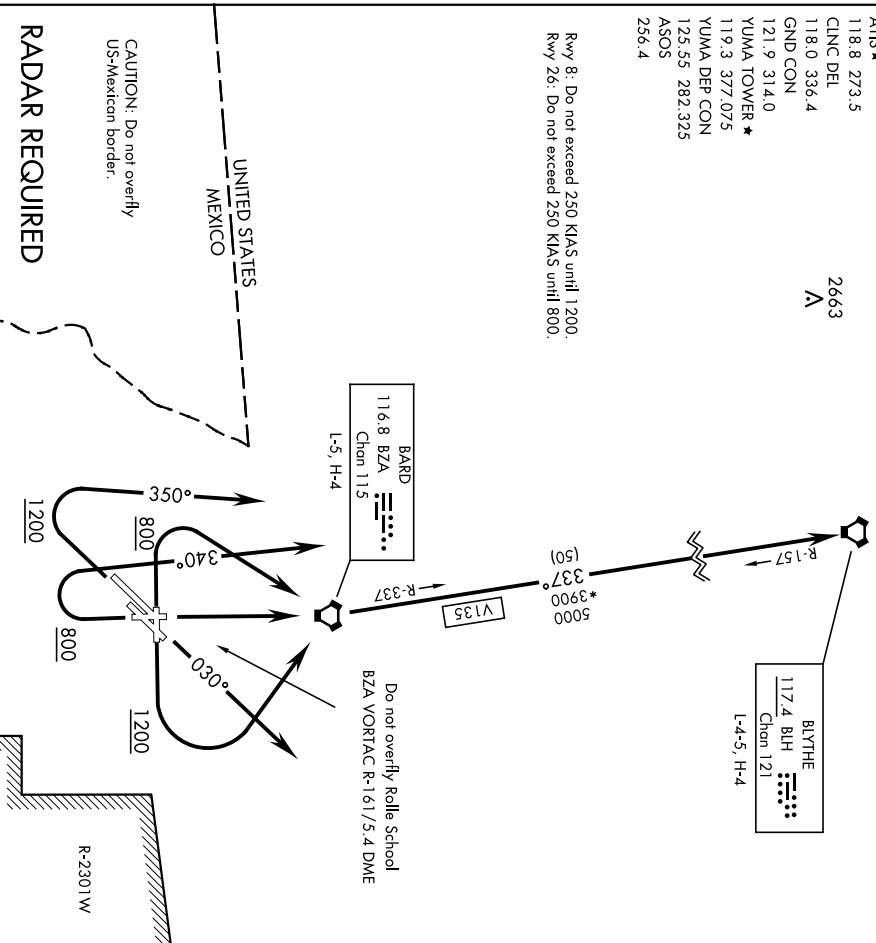
YUMA, ARIZONA

- ATIS * 118.8 273.5
- CLNC DEL 118.0 336.4
- GND CON 121.9 314.0
- YUMA TOWER * 119.3 377.075
- YUMA DEP CON 125.55 282.325
- ASOS 256.4

2663
A

BLTYHE
117.4 BLH
Chon 121
L-4-5, H-4

Rwy. 8: Do not exceed 250 KIAS until 1200.
Rwy. 26: Do not exceed 250 KIAS until 800.



SW-4, 14 SEP 2017 to 12 OCT 2017

SW-4, 14 SEP 2017 to 12 OCT 2017

DEPARTURE ROUTE DESCRIPTION

TAKE-OFF RMY 3L/R: Cross DER at or above 35' AGL/228' MSL, fly hdg 030°, expect radar vectors to intercept BZA VORTAC R-337. Thence...

TAKE-OFF RMY 8: Climb to 1200, then climbing left turn direct BZA VORTAC. Thence...

TAKE-OFF RMY 17: Climb to 800, then climbing right turn hdg 340° to intercept BZA VORTAC R-337. Thence...

TAKE-OFF RMY 21L/R: Climb to 1200, then climbing right turn hdg 350° to intercept BZA VORTAC R-337. Thence...

TAKE-OFF RMY 26: Climb to 800, then climbing right turn direct BZA VORTAC. Thence...

TAKE-OFF RMY 35: Climb direct BZA VORTAC, thence...

...via BZA R-337 and BLH VORTAC R-157 to BLH, then via assigned route. Maintain assigned altitude. Expect clearance to filed altitude/flight level 10 minutes after departure.

PICACHO THREE DEPARTURE (PIC3 • BLH)

YUMA, ARIZONA
YUMA MCAS/YUMA INTL (KNYL)