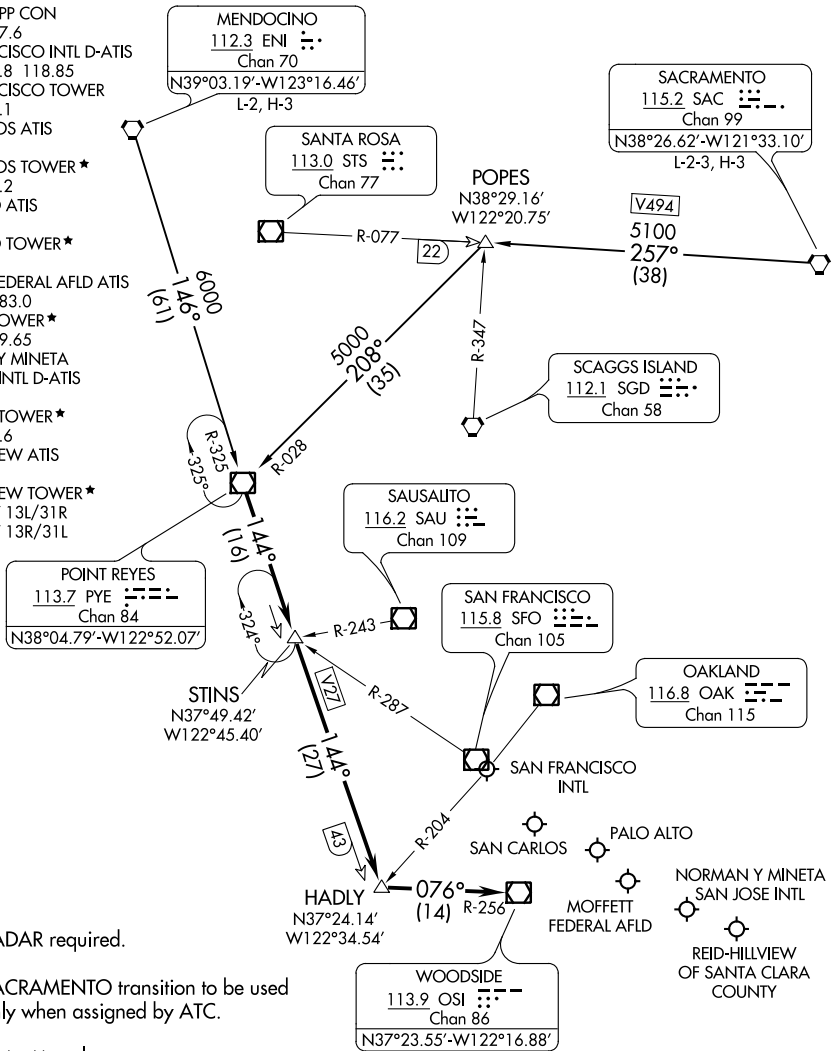


# POINT REYES THREE ARRIVAL

AL-375 (FAA)

SAN FRANCISCO, CALIFORNIA

NORCAL APP CON  
 133.95 317.6  
 SAN FRANCISCO INTL D-ATIS  
 113.7 115.8 118.85  
 SAN FRANCISCO TOWER  
 120.5 269.1  
 SAN CARLOS ATIS  
 125.9  
 SAN CARLOS TOWER\*  
 119.0 326.2  
 PALO ALTO ATIS  
 135.275  
 PALO ALTO TOWER\*  
 118.6  
 MOFFETT FEDERAL AFLD ATIS  
 124.175 283.0  
 MOFFETT TOWER\*  
 119.55 259.65  
 NORMAN Y MINETA  
 SAN JOSE INTL D-ATIS  
 126.95  
 SAN JOSE TOWER\*  
 124.0 257.6  
 REID-HILLVIEW ATIS  
 125.2  
 REID-HILLVIEW TOWER\*  
 119.8 RWY 13L/31R  
 126.1 RWY 13R/31L



NOTE: RADAR required.

NOTE: SACRAMENTO transition to be used only when assigned by ATC.

NOTE: Chart not to scale.

## ARRIVAL ROUTE DESCRIPTION

MENDOCINO TRANSITION (ENI.PYE3): From over ENI VORTAC on ENI R-146 and PYE R-325 to PYE VOR/DME. Thence. . .

SACRAMENTO TRANSITION (SAC.PYE3): From over SAC VORTAC on SAC R-257 and PYE R-028 to PYE VOR/DME. Thence. . .

. . . From over PYE VOR/DME on PYE R-144 to HADLY, then on OSI R-256 to OSI VOR/DME. Expect RADAR vectors to final approach course.

# POINT REYES THREE ARRIVAL

SAN FRANCISCO, CALIFORNIA

SW-2, 22 JUN 2017 to 20 JUL 2017

SW-2, 22 JUN 2017 to 20 JUL 2017