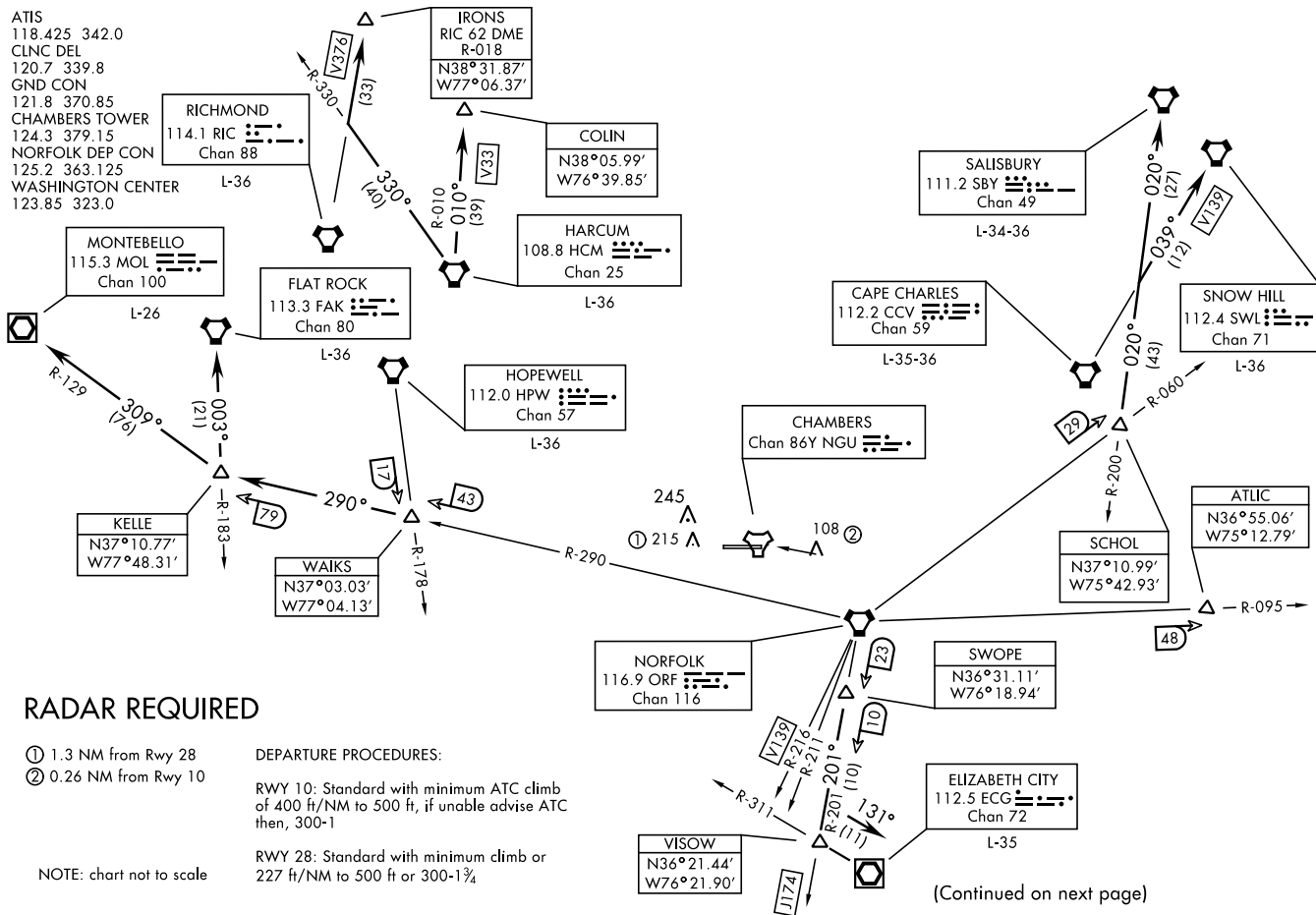


17033

CHAMBERS NINE DEPARTURE (VECTOR) (NGU9•NGU) NORFOLK NS (CHAMBERS FIELD) (KNGU) NORFOLK, VIRGINIA

CHAMBERS NINE DEPARTURE (VECTOR) (NGU9•NGU) NORFOLK NS (CHAMBERS FIELD) (KNGU) NORFOLK, VIRGINIA
Orig 02FEB17



17033

NORFOLK NS (CHAMBERS FIELD) (KNGU)
CHAMBERS NINE DEPARTURE (VECTOR) (NGU9•NGU) SHL-290(USN) NORFOLK, VIRGINIA

▼ DEPARTURE ROUTE DESCRIPTION
(Continued)

TAKE-OFF RWY 10: Cross DER at or above 35' AGL/48' MSL, after departure end climbing left turn as soon as practicable heading 050°. Minimum CG 400ft/NM to 500 MSL, if unable advise ATC. Thence...

TAKE-OFF RWY 28: Climb via heading 280°, minimum climb rate 227 ft/nm to 500, thence...

... via radar vectors to assigned transition. Maintain 2000 or assigned altitude. Expect clearance to requested altitude/flight level 10 minutes after departure.

ATLC TRANSITION (NGU9•ATLC): Via vectors to ATLC.

CAPE CHARLES TRANSITION (NGU9•CCV): Via vectors to CCV VORTAC. (NOTE: For altitudes 5000 and below).

ELIZABETH CITY TRANSITION (NGU9•ECG): Via vectors to SWOPE, then via ORF R-201 to VISOW (ORF R-201/33 DME), then direct ECG VOR/DME.

FLAT ROCK TRANSITION (NGU9•FAK): Via vectors to WAKS, then via ORF R-290 to KELLE, then direct FAK VORTAC.

HARCUM TRANSITION (NGU9•HCM): * Via vectors to HCM VORTAC.

HOPEWELL TRANSITION (NGU9•HPW): Via vectors to HPW VORTAC.

J174 TRANSITION (NGU9•ORF): Via vectors to J174.

MONTEBELLO TRANSITION (NGU9•MOL): Via vectors to WAKS, then via ORF R-290 to KELLE, then intercept MOL R-129 to MOL VOR/DME.

SALSBURY TRANSITION (NGU9•SBY): Via vectors to SCHOL, then SBY R-200 to SBY VORTAC.

SNOW HILL TRANSITION (NGU9•SWL): Via vectors to SCHOL, thence SBY R-200 to V139 to SWL VORTAC.

V139 TRANSITION (NGU9•ORF): Via vectors to V139.

* For routing to NHK/BWI/MTN/DCA METRO AREA via the following:
NHK-V33 COJIN V213 PXT. (NOTE For altitudes 7000 or 9000 only.)
BWI/MTN-V33 COJIN V213 PXT V93 GRACO. (NOTE: For altitudes 7000 or 9000 only.)
DCA/ADW/DAA-HCM R-330 V376 IRONS. (NOTE: For altitude 8000 only.)

NOTE: Transitions are part of the Preferred Departure Route (PDR) system and established as an Air Traffic flow procedure from the Norfolk Terminal Area. These fixes are to be used as the initial filing point out of NS Norfolk.

CHAMBERS NINE DEPARTURE (VECTOR) (NGU9•NGU) NORFOLK, VIRGINIA
Orig 02FEB17 NORFOLK NS (CHAMBERS FIELD) (KNGU)