

MARATHON, FLORIDA

AL-6394 (FAA)

NDB-A

THE FLORIDA KEYS MARATHON (MTH)

NDB MTH <b>260</b>	APP CRS <b>075°</b>	Rwy Idg TDZE Apt Elev	<b>N/A</b> <b>N/A</b> <b>5</b>
-----------------------	------------------------	-----------------------------	--------------------------------------

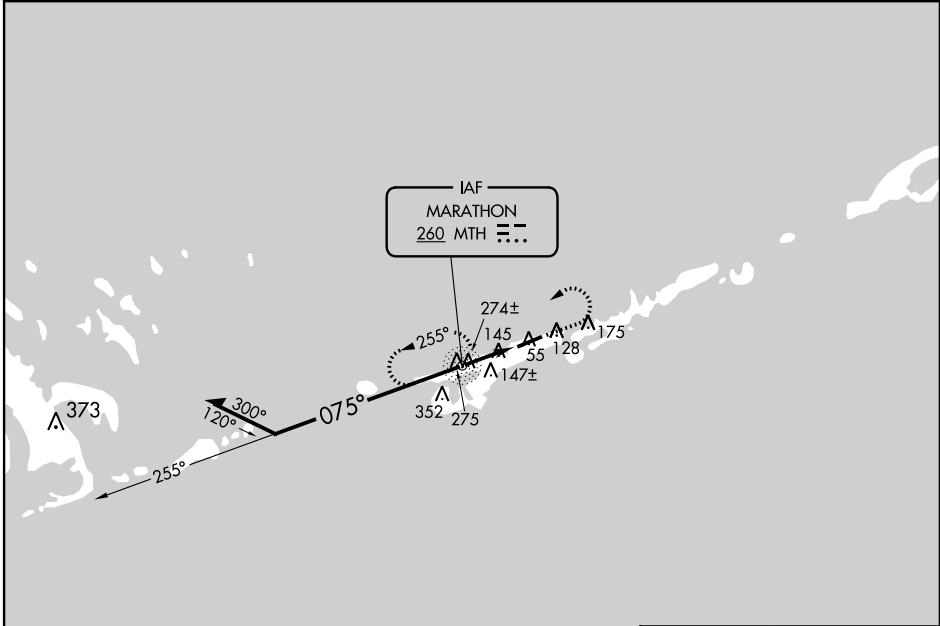
**⚠** Visibility reduction by helicopters NA.  
**⚠** When local altimeter setting not received, use Key West Intl altimeter setting and increase all MDAs 100 feet and Cat D visibility 1/4 mile.

MISSED APPROACH: Climb to 1000 then climbing left turn to 2100 direct MTH NDB and hold.

ASOS  
**135.525**

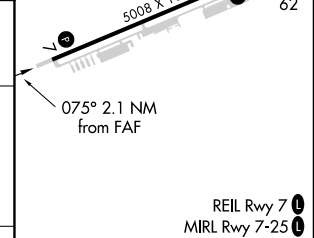
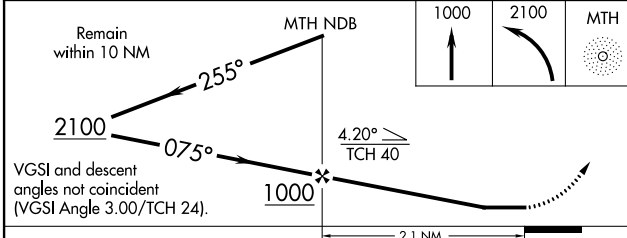
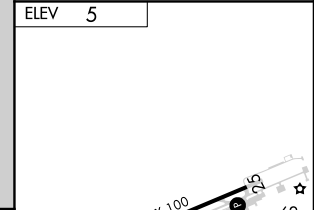
MIAMI CENTER  
**133.5 306.9**

UNICOM  
**122.8 (CTAF) 1**



SE-3, 08 JAN 2015 to 05 FEB 2015

SE-3, 08 JAN 2015 to 05 FEB 2015



CATEGORY	A	B	C	D
CIRCLING	460-1	455 (600-1)	460-1½ 455 (500-1½)	580-2 575 (600-2)

FAF to MAP 2.1 NM					
Knots	60	90	120	150	180
Min:Sec	2:06	1:24	1:03	0:50	0:42

MARATHON, FLORIDA  
Orig 14093

24°44'N-81°03'W

THE FLORIDA KEYS MARATHON (MTH)

NDB-A

WAAS CH <b>58312</b> <b>W25A</b>	APP CRS <b>251°</b>	Rwy Idg <b>5008</b> TDZE <b>5</b> Apt Elev <b>5</b>
--	------------------------	---

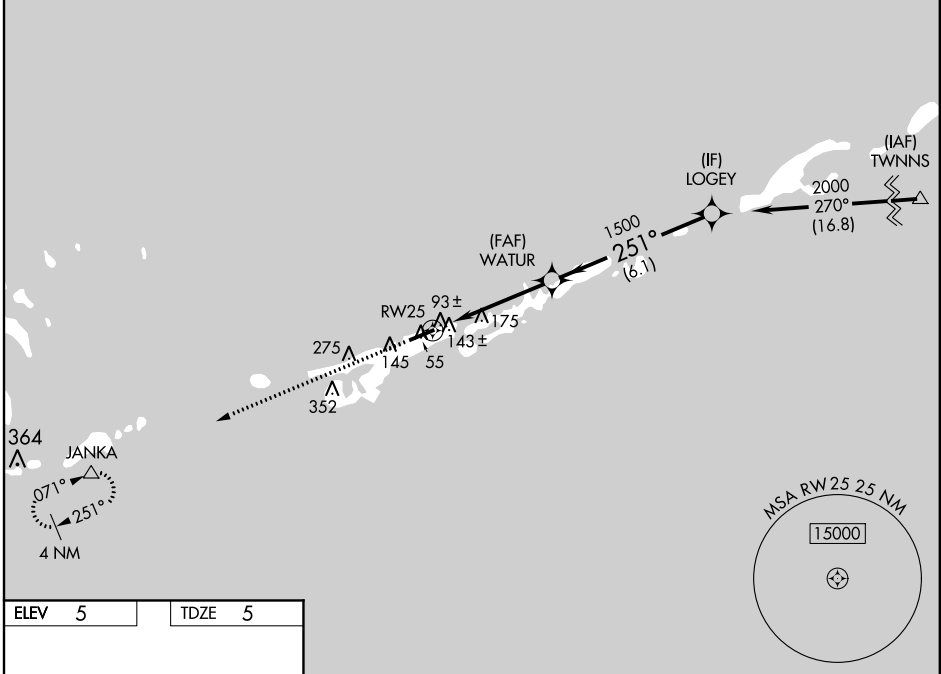
# RNAV (GPS) RWY 25

THE FLORIDA KEYS MARATHON (MTH)

**▽** DME/DME RNP-0.3 NA. Visibility reduction by helicopters NA. When local altimeter setting not received, use Key West Intl altimeter setting and increase all DA 93 feet and MDA 100 feet, and increase LPV all Cats visibility 1/2 mile; LNAV/VNAV all Cats visibility 1/4 mile; LNAV Cats C and D visibility 1/4 mile and increase Circling Cat D visibility 1/4 mile. Baro-VNAV NA below -15°C (5°F) and above 48°C (118°F). Baro-VNAV NA when using Key West Intl altimeter setting.

**MISSED APPROACH:**  
Climb to 3100 direct JANKA and hold.

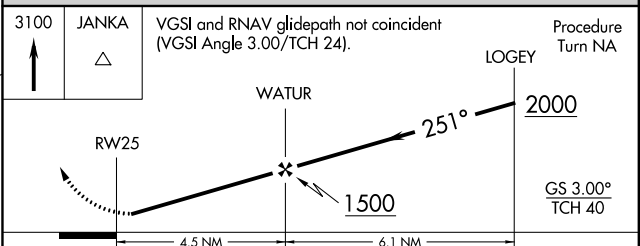
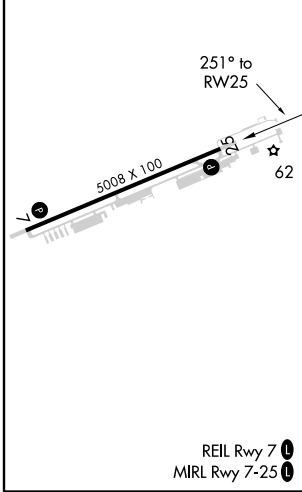
ASOS <b>135,525</b>	MIAMI CENTER <b>133.5 306.9</b>	UNICOM <b>122.8 (CTAF) 0</b>
------------------------	------------------------------------	---------------------------------



SE-3, 08 JAN 2015 to 05 FEB 2015

SE-3, 08 JAN 2015 to 05 FEB 2015

ELEV <b>5</b>	TDZE <b>5</b>
---------------	---------------



CATEGORY	A	B	C	D
LPV DA	315-1 310 (400-1)			
LNAV/VNAV DA	404-1 1/2 399 (400-1 1/2)			
LNAV MDA	440-1	435 (500-1)	440-1 1/4 435 (500-1 1/4)	440-1 1/2 435 (500-1 1/2)
CIRCLING	460-1	455 (500-1)	460-1 1/2 455 (500-1 1/2)	580-2 575 (600-2)

# RNAV (GPS) RWY 7

THE FLORIDA KEYS MARATHON (MTH)

WAAS CH <b>99605</b> <b>W07A</b>	APP CRS <b>071°</b>	Rwy Idg TDZE Apt Elev	<b>5008</b> <b>5</b> <b>5</b>
--	------------------------	-----------------------------	-------------------------------------

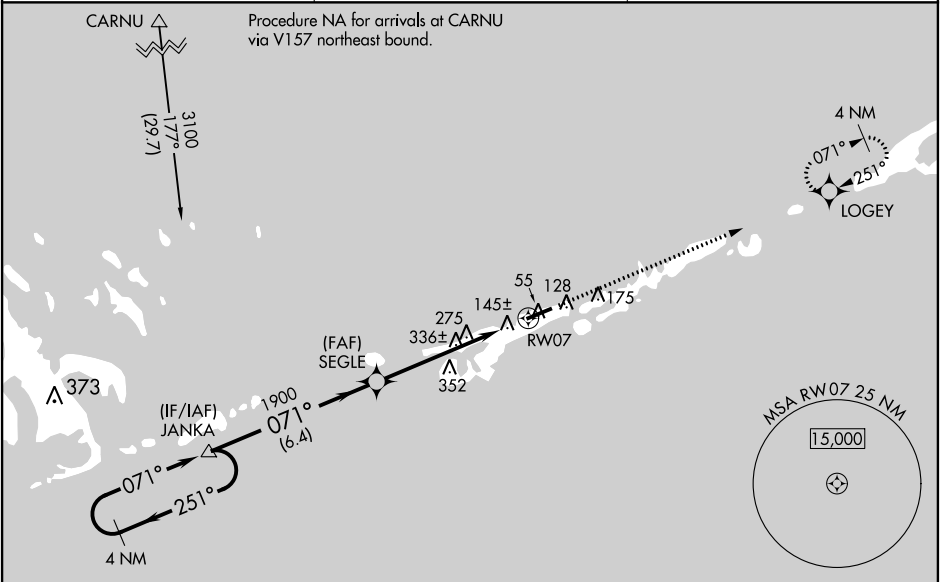
**▼** Baro-VNAV NA when using Key West Intl altimeter setting. For uncompensated Baro-VNAV systems, LNAV/VNAV NA below -1.5°C (5°F) or above 49°C (120°F). DME/DME RNP-0.3 NA.  
**▲** Visibility reduction by helicopters NA. When local altimeter setting not received, use Key West Intl altimeter setting and increase all DAs 93 feet, increase all MDAs 100 feet, increase LPV and LNAV/VNAV all Cats visibility ½ mile, LNAV Cats C and D visibility ½ mile, and Circling Cat C visibility ½ mile, Circling Cat D visibility ¼ mile.

**MISSED APPROACH:**  
Climb to 2000 direct LOGEY and hold.

ASOS  
**135.525**

MIAMI CENTER  
**133.5 306.9**

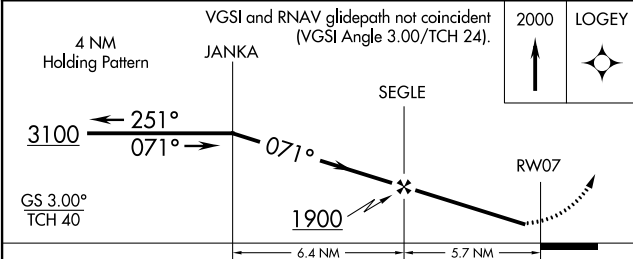
UNICOM  
**122.8 (CTAF) 0**



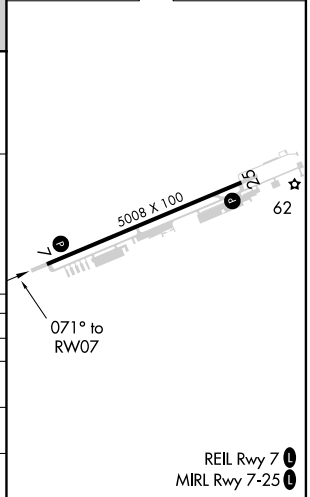
SE-3, 08 JAN 2015 to 05 FEB 2015

SE-3, 08 JAN 2015 to 05 FEB 2015

ELEV	5	TDZE	5
------	---	------	---



CATEGORY	A	B	C	D
LPV DA		389-1¼	384 (400-1¼)	
LNAV/VNAV DA		441-1½	436 (500-1½)	
LNAV MDA	600-1	595 (600-1)	600-1½ 595 (600-1½)	600-1¾ 595 (600-1¾)
CIRCLING	600-1	595 (600-1)	600-1½ 595 (600-1½)	600-2 595 (600-2)



REIL Rwy 7 0  
MIRL Rwy 7-25 0



INSTRUMENT APPROACH PROCEDURE CHARTS

**A** IFR ALTERNATE AIRPORT MINIMUMS

Standard alternate minimums for non-precision approaches and approaches with vertical guidance [NDB, VOR, LOC, TACAN, LDA, SDF, VOR/DME, ASR, RNAV (GPS) or RNAV (RNP)] are 800-2. Standard alternate minimums for precision approaches (ILS, PAR, or GLS) are 600-2. Airports within this geographical area that require alternate minimums other than standard or alternate minimums with restrictions are listed below. NA - means alternate minimums are not authorized due to unmonitored facility, absence of weather reporting service, or lack of adequate navigation coverage. Civil pilots see FAR 91. IFR Alternate Minimums: Ceiling and Visibility Minimums not applicable to USA/USN/USAF. Pilots must review the IFR Alternate Minimums Notes for alternate airfield suitability.

**NAME ALTERNATE MINIMUMS**  
**APALACHICOLA, FL**

APALACHICOLA  
RGNL (AAF) ..... RNAV (GPS) Rwy 6  
RNAV (GPS) Rwy 14  
RNAV (GPS) Rwy 18  
RNAV (GPS) Rwy 24  
RNAV (GPS) Rwy 32  
RNAV (GPS) Rwy 36

NA when local weather not available.

**BARTOW, FL**

BARTOW MUNI (BOW) ..... RNAV (GPS) Rwy 5  
RNAV (GPS) Rwy 9L  
RNAV (GPS) Rwy 23  
RNAV (GPS) Rwy 27R

NA when local weather not available.

**BOCA RATON, FL**

BOCA RATON (BCT) ..... RNAV (GPS) Rwy 5  
RNAV (GPS) Y Rwy 23<sup>1</sup>  
VOR/DME-A

NA when local weather not available.

<sup>1</sup>Category D, 900-2 $\frac{1}{4}$ .

**BROOKSVILLE, FL**

BROOKSVILLE-TAMPA BAY  
RGNL (BKV) ..... RNAV (GPS) Rwy 3  
RNAV (GPS) Rwy 9  
RNAV (GPS) Rwy 21  
RNAV (GPS) Rwy 27

NA when local weather not available.

**CHARLOTTE AMALIE, ST. THOMAS, VI**

CYRIL E. KING (STT) ..... ILS Rwy 10<sup>1</sup>, 700-2  
RNAV (GPS) Rwy 10<sup>12</sup>  
VOR-A, 1200-3

<sup>1</sup>NA when control tower closed.

<sup>2</sup>Categories A, B, 1000-2 $\frac{1}{4}$ , Category C, 1000-2 $\frac{3}{4}$ , Category D, 1000-3

**NAME ALTERNATE MINIMUMS**  
**CHRISTIANSTED, ST. CROIX, VI**

HENRY E  
ROHLESEN (STX) ..... ILS or LOC Rwy 10<sup>1</sup>  
NDB Rwy 10<sup>12</sup>  
RNAV (GPS) Rwy 10<sup>3</sup>  
VOR Rwy 28<sup>14</sup>

<sup>1</sup>NA when control tower closed.

<sup>2</sup>Category A, B, 1200-2; Category C, D, 1200-3.

<sup>3</sup>Category A, B, 1000-2; Category C, D, 1000-3.

<sup>4</sup>Category A, B, 900-2; Category C, D, 900-3.

**CRESTVIEW, FL**

BOB SIKES (CEW) ..... ILS Rwy 17<sup>12</sup>  
RNAV (GPS) Rwy 17<sup>1</sup>  
RNAV (GPS) Rwy 35<sup>1</sup>  
VOR-A<sup>3</sup>

<sup>1</sup>NA when local weather not available.

<sup>2</sup>Category D, 700-2.

<sup>3</sup>Category D, 800-2 $\frac{1}{4}$ .

**CRYSTAL RIVER, FL**

CRYSTAL RIVER (CGC) ..... RNAV (GPS) Rwy 9  
RNAV (GPS) Rwy 27

NA when local weather not available.

Category C, 800-2 $\frac{1}{4}$ ; Category D, 900-2 $\frac{3}{4}$ .

**DAYTONA BEACH, FL**

DAYTONA BEACH  
INTL (DAB) ..... ILS or LOC Rwy 7L<sup>14</sup>  
ILS or LOC Rwy 25R<sup>24</sup>  
VOR Rwy 16<sup>3</sup>

<sup>1</sup>ILS, Categories A, B, C, D, 700-2.

<sup>2</sup>Categories A, B, 1100-2; Category C, D, 1100-3.

<sup>3</sup>Category D, 800-2 $\frac{1}{4}$ .

<sup>4</sup>NA when control tower closed.

08 JAN 2015 to 05 FEB 2015

08 JAN 2015 to 05 FEB 2015





**ALTERNATE MINS**

15008

M2



NAME ALTERNATE MINIMUMS  
**DELAND, FL**  
 DELAND MUNI- SIDNEY H.  
 TAYLOR FIELD (DED) ..... **RNAV (GPS) Rwy 5**

**RNAV (GPS) Rwy 12**  
**RNAV (GPS) Rwy 23**  
**RNAV (GPS) Rwy 30**

NA when local weather not available.

**DESTIN, FL**  
 DESTIN-FORT WALTON  
 BEACH (DTS) ..... **RNAV (GPS) Rwy 14**

**RNAV (GPS) Rwy 32**

NA when local weather not available.

**FERNANDINA BEACH, FL**  
 FERNANDINA BEACH  
 MUNI (FHB)..... **RNAV (GPS) Rwy 13**  
**RNAV (GPS) Rwy 22**

<sup>2</sup>NA when local weather not available.

**FORT LAUDERDALE, FL**  
 FORT LAUDERDALE  
 EXECUTIVE (FXE) ..... **ILS or LOC Rwy 9<sup>1</sup>**  
**RNAV (GPS) Rwy 9<sup>2</sup>**  
**RNAV (GPS) Rwy 27<sup>2</sup>**

NA when local weather not available.  
<sup>1</sup>ILS, Category B, 700-2; Category C, 800-2¼;  
 Category D, 800-2½; LOC, Category C,  
 800-2 ¼; Category D, 800-2 ½.

<sup>2</sup>Category C, 800-2¼; Category D, 800-2½.

**FORT LAUDERDALE-HOLLYWOOD**  
 INTL (FLL)..... **ILS or LOC Rwy 10L<sup>2</sup>**  
**ILS or LOC Rwy 10R<sup>2</sup>**  
**ILS or LOC Rwy 28L<sup>2</sup>**  
**ILS or LOC Rwy 28R<sup>2</sup>**  
**RNAV (GPS) Rwy 10R<sup>1</sup>**  
**RNAV (GPS) Rwy 28L<sup>1</sup>**  
**RNAV (GPS) Z Rwy 10L<sup>1</sup>**  
**RNAV (GPS) Y Rwy 28R<sup>1</sup>**  
**VOR Rwy 28R<sup>1</sup>**

<sup>1</sup>Category D, 800-2¼.

<sup>2</sup>ILS, Category C, 700-2¼, Category D, 700-2½.

LOC, Category C, 800-2¼, Category D,  
800-2½.

**FORT MYERS, FL**  
 SOUTHWEST  
 FLORIDA INTL (RSW) ... **ILS or LOC/DME Rwy 6**  
 NA when control tower closed.  
 ILS, Category E, 700-2¼; LOC, Category E,  
 800-2¼.

NAME ALTERNATE MINIMUMS  
**FORT PIERCE, FL**  
 ST LUCIE COUNTY  
 INTL (FPR)..... **ILS or LOC Rwy 10R<sup>1</sup>**

**NDB Rwy 28L**

**NDB-A**

**RNAV (GPS) Rwy 10R<sup>2</sup>**

**RNAV (GPS) Rwy 14**

**RNAV (GPS) Rwy 28L**

**RNAV (GPS) Rwy 32**

**VOR/DME Rwy 14**

NA when local weather not available.

<sup>1</sup>ILS, LOC, Category C, 900-2½; Category D,  
900-2¾.

<sup>2</sup>Category C, 900-2½; Category D, 900-2¾.

**GAINESVILLE, FL**  
 GAINESVILLE  
 RGNL (GNV)..... **RNAV (GPS) Rwy 7<sup>1</sup>**  
**RNAV (GPS) Rwy 11<sup>1</sup>**  
**RNAV (GPS) Rwy 25<sup>1</sup>**  
**RNAV (GPS) Rwy 29<sup>1</sup>**  
**VOR Rwy 25<sup>2</sup>**

<sup>1</sup>NA when local weather not available.

<sup>2</sup>Categories A, B, 900-2; Category C 900-2½.

**HOLLYWOOD, FL**  
 NORTH PERRY (HWO)... **RNAV (GPS) Rwy 10R**  
**RNAV (GPS) Rwy 28R**  
 NA when local weather not available.

**INVERNESS, FL**  
 INVERNESS (INF) ..... **RNAV (GPS) Rwy 1**  
**RNAV (GPS) Rwy 19**  
 NA when local weather not available.

**JACKSONVILLE, FL**  
 CECIL (VQQ) ..... **ILS or LOC Rwy 36R<sup>12</sup>**  
**RNAV (GPS) Rwy 9R**  
**RNAV (GPS) Rwy 18L**  
**RNAV (GPS) Rwy 18R**  
**RNAV (GPS) Rwy 27L**  
**RNAV (GPS) Rwy 36L**  
**RNAV (GPS) Rwy 36R**  
**TACAN Rwy 9R<sup>2</sup>**  
**TACAN Rwy 27L<sup>2</sup>**  
**VOR Rwy 9R**

NA when local weather not available.

<sup>1</sup>NA when control tower closed.

<sup>2</sup>Category E, 900-3.

**JACKSONVILLE EXECUTIVE AT CRAIG**  
 (CRG)..... **ILS or LOC Rwy 32**  
**RNAV (GPS) Rwy 32**  
**VOR Rwy 14<sup>1</sup>**  
**VOR/DME Rwy 32**

NA when local weather not available.

<sup>1</sup>Categories C, D, 800-2½.



**ALTERNATE MINS**

15008

M2

SE-3



08 JAN 2015 to 05 FEB 2015

08 JAN 2015 to 05 FEB 2015



# ALTERNATE MINS

15008

M3



## NAME ALTERNATE MINIMUMS **JACKSONVILLE, FL (CON'T)** JACKSONVILLE

INTL (JAX) ..... ILS or LOC Rwy 8<sup>1</sup>  
ILS or LOC Rwy 14<sup>2</sup>  
ILS or LOC Rwy 26<sup>2</sup>  
VOR/DME Rwy 32<sup>3</sup>

<sup>1</sup>ILS, Category D, 700-2, Category E, 800-2½.

<sup>2</sup>ILS, Category D, 700-2.

<sup>3</sup>Category E, 800-2½.

## **KEY WEST, FL**

KEY WEST INTL (EYW)..... RNAV (GPS) Rwy 9  
RNAV (GPS) Rwy 27

NA when local weather not available.

## **LAKE CITY, FL**

LAKE CITY  
GATEWAY (LCQ)..... RNAV (GPS) Rwy 10  
RNAV (GPS) Rwy 28

NA when local weather not available.

## **LAKELAND, FL**

LAKELAND LINDER  
RGNL (LAL)..... ILS or LOC/DME Rwy 9  
RNAV (GPS) Rwy 5  
RNAV (GPS) Rwy 9  
RNAV (GPS) Rwy 23  
RNAV (GPS) Rwy 27  
VOR Rwy 9  
VOR Rwy 27<sup>1</sup>

NA when local weather not available.

<sup>1</sup>Categories C, D, 800-2½.

## **LEESBURG, FL**

LEESBURG INTL (LEE) ..... NDB Rwy 31<sup>1</sup>  
RNAV (GPS) Rwy 3  
RNAV (GPS) Rwy 13  
RNAV (GPS) Rwy 31

NA when local weather not available.

<sup>1</sup>Category D, 800-2¼.

## **MARATHON, FL**

THE FLORIDA KEYS  
MARATHON (MTH)..... NDB-A  
RNAV (GPS) Rwy 7  
RNAV (GPS) Rwy 25

NA when local weather not available.

## **MARIANNA, FL**

MARIANNA MUNI (MAI)..... RNAV (GPS) Rwy 18  
VOR-A  
VOR-B

NA when local weather not available.

## NAME ALTERNATE MINIMUMS **MAYAGUEZ, PR** EUGENIO MARIA

DE HOSTOS (MAZ) ..... RNAV (GPS) Rwy 9  
VOR Rwy 9

Categories A, B, 1100-2; Category C, 1100-3.

NA except standard for operators with approved weather reporting service.

## **MERRITT ISLAND, FL**

MERRITT ISLAND  
(COI) ..... RNAV (GPS) Rwy 11

NA when local weather not available.

## **MIAMI, FL**

KENDALL-TAMIAMI  
EXECUTIVE (TMB) ..... ILS or LOC Rwy 9R<sup>12</sup>  
RNAV (GPS) Rwy 9L  
RNAV (GPS) Rwy 9R  
RNAV (GPS) Rwy 27L  
RNAV (GPS) Rwy 27R

NA when local weather not available.

<sup>2</sup>NA when control tower closed.

<sup>1</sup>Category D, 700-2.

MIAMI INTL (MIA) ..... ILS or LOC Rwy 26L<sup>3</sup>  
ILS or LOC Rwy 27<sup>1</sup>  
ILS or LOC Rwy 30<sup>2</sup>

<sup>1</sup>NA when local weather not available.

<sup>2</sup>Categories A, B, 900-2; Category C 900-2½; Category D, 900-2¾.

<sup>3</sup>ILS, Categories A, B, C, 800-2, Category D, 800-2¼; LOC, Category D, 800-2¼.

## **OPA-LOCKA**

EXECUTIVE (OPF) ..... ILS or LOC Rwy 9L<sup>1</sup>  
ILS or LOC Rwy 12<sup>1</sup>  
ILS or LOC Rwy 27R<sup>1</sup>  
RNAV (GPS) Rwy 9L  
RNAV (GPS) Rwy 12  
RNAV (GPS) Rwy 27R

NA when local weather not available.

<sup>1</sup>NA when control tower closed.

## **NAPLES, FL**

NAPLES MUNI (APF) ..... RNAV (GPS)-A<sup>1</sup>  
RNAV (GPS)-B<sup>1</sup>  
RNAV (GPS) Rwy 5  
RNAV (GPS) Rwy 23

NA when local weather not available.

<sup>1</sup>Category D, 800-2¼.

08 JAN 2015 to 05 FEB 2015

08 JAN 2015 to 05 FEB 2015



# ALTERNATE MINS

15008

M3

SE-3





**ALTERNATE MINS**

15008

M4



**NAME ALTERNATE MINIMUMS**

**OCALA, FL**

OCALA INTL-JIM TAYLOR  
FIELD (OCF) ..... ILS or LOC/DME Rwy 36  
RNAV (GPS) Rwy 18  
RNAV (GPS) Rwy 36  
VOR Rwy 36

NA when local weather not available.

**OKEECHOBEE, FL**

OKEECHOBEE  
COUNTY (OBE) ..... RNAV (GPS) Rwy 5  
RNAV (GPS) Rwy 14  
RNAV (GPS) Rwy 23  
RNAV (GPS) Rwy 32

NA when local weather not available.

**ORLANDO, FL**

EXECUTIVE (ORL) ..... ILS or LOC Rwy 7<sup>1</sup>  
ILS or LOC Rwy 25<sup>1</sup>  
RNAV (GPS) Rwy 7  
RNAV (GPS) Rwy 25

Category D, 800-2½.

NA when local weather not available.

<sup>1</sup>NA when control tower closed.

**KISSIMMEE**

GATEWAY (ISM) ..... ILS or LOC Rwy 15  
RNAV (GPS) Rwy 6  
RNAV (GPS) Rwy 15  
RNAV (GPS) Rwy 33  
VOR/DME-A

NA when local weather not available.

**ORLANDO**

INTL (MCO) ..... ILS or LOC Rwy 17L  
ILS or LOC Rwy 17R  
ILS or LOC Rwy 18R  
ILS or LOC Rwy 35L  
ILS or LOC Rwy 35R  
ILS or LOC Rwy 36R

ILS, 700-2.

**ORLANDO SANFORD**

INTL (SFB) ..... ILS or LOC Rwy 9L<sup>12</sup>  
ILS or LOC Rwy 9R<sup>12</sup>  
ILS or LOC Rwy 27R<sup>12</sup>  
NDB-B<sup>2</sup>  
NDB-C<sup>2</sup>  
RNAV (GPS) Rwy 9L<sup>1</sup>  
RNAV (GPS) Rwy 9R<sup>1</sup>  
RNAV (GPS) Rwy 18<sup>1</sup>  
RNAV (GPS) Rwy 27L<sup>1</sup>  
RNAV (GPS) Rwy 27R<sup>1</sup>

<sup>1</sup>NA when local weather not available.

<sup>2</sup>NA when control tower closed.

**NAME ALTERNATE MINIMUMS**

**ORMOND BEACH, FL**

ORMOND BEACH  
MUNI (OMN) ..... RNAV (GPS) Rwy 8  
RNAV (GPS) Rwy 17  
RNAV (GPS) Rwy 26

NA when local weather not available.

**PALM COAST, FL**

FLAGLER  
COUNTY (FIN) ..... RNAV (GPS) Rwy 6  
RNAV (GPS) Rwy 11  
RNAV (GPS) Rwy 24  
RNAV (GPS) Rwy 29

NA when local weather not available.

Category D, 800-2½.

**PANAMA CITY, FL**

NORTHWEST FLORIDA BEACHES  
INTL (ECP) ..... ILS or LOC/DME Rwy 16<sup>1</sup>  
RNAV (GPS) Rwy 16  
RNAV (GPS) Rwy 34

NA when local weather not available.

<sup>1</sup>NA when control tower closed.

**PENSACOLA, FL**

PENSACOLA  
INTL (PNS) ..... ILS or LOC Rwy 17<sup>12</sup>  
VOR Rwy 8<sup>3</sup>

<sup>1</sup>NA when control tower closed.

<sup>2</sup>ILS, Category A, B, C, D, 700-2.

<sup>3</sup>Category D, 800-2¼.

**PERRY, FL**

PERRY-FOLEY (40J) ..... RNAV (GPS) Rwy 18  
RNAV (GPS) Rwy 36

NA when local weather not available.

Category D, 900-2¾.

**PLANT CITY, FL**

PLANT CITY (PCM) ..... RNAV (GPS) Rwy 10  
RNAV (GPS) Rwy 28

NA when local weather not available.

**POMPANO BEACH, FL**

POMPANO BEACH  
AIRPARK (PMP) ..... LOC Rwy 15<sup>1</sup>  
RNAV (GPS) Rwy 6  
RNAV (GPS) Rwy 15  
RNAV (GPS) Rwy 24  
RNAV (GPS) Rwy 33

NA when local weather not available.

<sup>1</sup>NA when control tower closed.

08 JAN 2015 to 05 FEB 2015

08 JAN 2015 to 05 FEB 2015



**ALTERNATE MINS**

15008

M4

SE-3





**ALTERNATE MINS**

15008

M5



NAME ALTERNATE MINIMUMS

**PUNTA GORDA, FL**  
 PUNTA GORDA (PGD) ..... **RNAV (GPS) Rwy 4**  
**RNAV (GPS) Rwy 15**  
**RNAV (GPS) Rwy 22**  
**RNAV (GPS) Rwy 33**  
**VOR Rwy 22**

NA when local weather not available.

**ST. AUGUSTINE, FL**  
 NORTHEAST FLORIDA  
 RGNL (SGJ) ..... **RNAV (GPS) Rwy 13<sup>1</sup>**  
**RNAV (GPS) Rwy 31<sup>1</sup>**  
**VOR Rwy 13<sup>2</sup>**  
**VOR Rwy 31<sup>2</sup>**

<sup>1</sup>NA when local weather not available.  
<sup>2</sup>NA when control tower closed.

**ST. PETERSBURG, FL**  
 ALBERT  
 WHITTED (SPG) ..... **RNAV (GPS) Rwy 7**  
**RNAV (GPS) Rwy 18**  
**RNAV (GPS) Rwy 36**  
**VOR Rwy 18<sup>1</sup>**

NA when local weather not available.  
<sup>1</sup>Categories A, B, 900-2.

**ST. PETERSBURG-CLEARWATER, FL**  
 ST. PETE- CLEARWATER  
 INTL (PIE) ..... **ILS or LOC Rwy 18L<sup>14</sup>**  
**ILS or LOC Rwy 36R<sup>24</sup>**  
**RNAV (GPS)-A**  
**RNAV (GPS) Rwy 18L**  
**RNAV (GPS) Rwy 36R**  
**VOR/DME Rwy 18L**  
**VOR/DME Rwy 36R**  
**VOR Rwy 4<sup>3</sup>**

NA when local weather not available.  
<sup>1</sup>Category E, 1000-3.  
<sup>2</sup>ILS, Categories A, B, C, 800-2, Category D, 800-2½, Category E, 1000-3; LOC, Category D, 800-2½, Category E, 1000-3.  
<sup>3</sup>Categories A, B, 1000-2; Category C, D, 1000-3.  
<sup>4</sup>NA when control tower closed.

**SAN JUAN, PR**  
 LUIS MUNOZ  
 MARIN INTL (SJU) ..... **ILS or LOC Rwy 10<sup>1</sup>**  
**VOR or TACAN Rwy 8<sup>2</sup>**  
**VOR or TACAN Rwy 10<sup>3</sup>**  
**VOR or TACAN Rwy 26<sup>2</sup>**

<sup>1</sup>ILS, Category E, 700-2½. LOC, Category E, 800-2½.  
<sup>2</sup>Category E, 900-3.  
<sup>3</sup>Category E, 800-2½.

NAME ALTERNATE MINIMUMS

**SARASOTA (BRADENTON), FL**  
 SARASOTA/BRADENTON  
 INTL (SRQ) ..... **ILS or LOC Rwy 14<sup>1</sup>**  
**ILS or LOC Rwy 32<sup>1</sup>**  
**VOR Rwy 32<sup>2</sup>**

<sup>1</sup>NA when control tower closed.  
<sup>2</sup>Categories A, B, 900-2; Category C, 900-2½; Category D, 900-2¾.

**SEBRING, FL**  
 SEBRING RGNL (SEF) ..... **RNAV (GPS) RWY 14**  
**RNAV (GPS) RWY 32**

NA when local weather not available.

**STUART, FL**  
 WITHAM FIELD (SUA) ..... **RNAV (GPS) Rwy 12**  
**RNAV (GPS) Rwy 30**

NA when local weather not available.

**TALLAHASSEE, FL**  
 TALLAHASSEE  
 RGNL (TLH) ..... **ILS or LOC Rwy 27<sup>123</sup>**  
**ILS or LOC/DME Rwy 36<sup>12</sup>**  
**RNAV (GPS) Rwy 18<sup>2</sup>**  
**RNAV (GPS) Rwy 27<sup>5</sup>**  
**RNAV (GPS) Rwy 36<sup>2</sup>**  
**VOR/DME or TACAN Rwy 36<sup>24</sup>**  
**VOR Rwy 18<sup>25</sup>**

<sup>1</sup>NA when control tower closed.  
<sup>2</sup>NA when local weather not available.  
<sup>3</sup>ILS, Categories A,B, 800-2; ILS, LOC, Category C, 800-2½; Category D, 800-2½; Category E, 1000-3.  
<sup>4</sup>Category E, 1000-3.  
<sup>5</sup>Category D, 800-2½.

**TAMPA, FL**  
 PETER O  
 KNIGHT (TPF) ..... **RNAV (GPS) Rwy 22**  
**RNAV (GPS) Rwy 36**

NA when local weather not available.

**TAMPA**  
 EXECUTIVE (VDF) ..... **ILS or LOC Rwy 23<sup>1</sup>**  
**RNAV (GPS) Rwy 5**  
**RNAV (GPS) Rwy 18**  
**RNAV (GPS) Rwy 23**

NA when local weather not available.  
<sup>1</sup>ILS, Categories B, C, 800-2.

08 JAN 2015 to 05 FEB 2015

08 JAN 2015 to 05 FEB 2015



**ALTERNATE MINS**

15008

M5

SE-3







# ALTERNATE MINS



NAME ALTERNATE MINIMUMS  
**TAMPA, FL (CON'T)**  
 TAMPA INTL (TPA)..... **ILS or LOC Rwy 19R<sup>1</sup>**  
   **ILS or LOC Rwy 1L<sup>1</sup>**  
   **LOC Rwy 1R<sup>2</sup>**  
   **RNAV (GPS) Rwy 19R<sup>1</sup>**  
   **RNAV (GPS) Rwy 1L<sup>1</sup>**  
   **RNAV (GPS) Rwy 1R<sup>3</sup>**

<sup>1</sup>Category E, 1000-3.  
<sup>2</sup>Categories A, B, 1300-2; Categories C, D, 1300-3.  
<sup>3</sup>Categories D, E, 1000-3.

**TITUSVILLE, FL**  
 NASA SHUTTLE LANDING FACILITY (TTS) ..... **RNAV (GPS) Rwy 15<sup>3</sup>**  
   **RNAV (GPS) Rwy 33<sup>12</sup>**

<sup>1</sup>NA when local weather not available.  
<sup>2</sup>Categories D, E, 1000-3.  
<sup>3</sup>Category C, 1000-2¾, Category D, E, 1000-3.

SPACE COAST  
 RGNL (TIX) ..... **ILS or LOC Rwy 36<sup>2</sup>**  
   **RNAV (GPS) Rwy 9<sup>1</sup>**  
   **RNAV (GPS) Y Rwy 18<sup>1</sup>**  
   **RNAV (GPS) Z Rwy 18<sup>2</sup>**  
   **RNAV (GPS) Rwy 36<sup>1</sup>**

<sup>1</sup>NA when local weather not available.  
<sup>2</sup>NA when control tower closed.

**VERO BEACH, FL**  
 VERO BEACH  
 MUNI (VRB) ..... **RNAV (GPS) Rwy 4**  
   **RNAV (GPS) Rwy 12R**  
   **RNAV (GPS) Rwy 22**  
   **RNAV (GPS) Rwy 30L**  
   **VOR Rwy 12R**  
   **VOR/DME Rwy 30L**

NA when local weather not available.

**VENICE, FL**  
 VENICE  
 MUNI (VNC) ..... **RNAV (GPS) Rwy 5**  
   **RNAV (GPS) Rwy 23**

NA when local weather not available.  
 Category D, 1000-3.

**WEST PALM BEACH, FL**  
 NORTH PALM BEACH COUNTY GENERAL AVIATION (F45) ..... **RNAV (GPS) Rwy 8R**

NA when local weather not available.

PALM BEACH  
 INTL (PBI) ..... **ILS or LOC Rwy 10L<sup>1</sup>**  
   **ILS or LOC Rwy 28R<sup>1</sup>**  
   **RNAV (GPS) Y Rwy 14<sup>2</sup>**

<sup>1</sup>ILS, Categories C, D, 700-2.  
<sup>2</sup>Category D, 800-2¼.

NAME ALTERNATE MINIMUMS  
**WINTER HAVEN, FL**  
 WINTER HAVEN'S  
 GILBERT (GIF) ..... **RNAV (GPS) Rwy 5**  
   **RNAV (GPS) Rwy 11**  
   **VOR/DME-A**

NA when local weather not available.  
 Category D, 800-2¼.

**ZEPHYRHILLS, FL**  
 ZEPHYRHILLS  
 MUNI (ZPH) ..... **RNAV (GPS) Rwy 1**  
   **RNAV (GPS) Rwy 5**  
   **RNAV (GPS) Rwy 19**  
   **RNAV (GPS) Rwy 23**

NA when local weather not available.



# ALTERNATE MINS



# TAKEOFF MINIMUMS, (OBSTACLE) DEPARTURE PROCEDURES, AND DIVERSE VECTOR AREA (RADAR VECTORS)

15008

## INSTRUMENT APPROACH PROCEDURE CHARTS



### IFR TAKEOFF MINIMUMS AND (OBSTACLE) DEPARTURE PROCEDURES

#### Civil Airports and Selected Military Airports

ALL USERS: Airports that have Departure Procedures (DPs) designed specifically to assist pilots in avoiding obstacles during the climb to the minimum enroute altitude, and/or airports that have civil IFR takeoff minimums other than standard, are listed below. Takeoff Minimums and Departure Procedures apply to all runways unless otherwise specified. Altitudes, unless otherwise indicated, are minimum altitudes in MSL.

DPs specifically designed for obstacle avoidance are referred to as Obstacle Departure Procedures (ODPs) and are textually described below, or published separately as a graphic procedure. If the ODP is published as a graphic procedure, its name will be listed below, and it can be found in either this volume (civil), or the applicable military volume, as appropriate. Users will recognize graphic obstacle DPs by the term "(OBSTACLE)" included in the procedure title; e.g., TETON TWO (OBSTACLE). If not specifically assigned an ODP, SID, or radar vector as part of an IFR clearance, an ODP may be required to be flown for obstacle clearance, even though not specifically stated in the IFR clearance. When doing so in this manner, ATC should be informed when the ODP being used contains a specified route to be flown, restrictions before turning, and/or altitude restrictions.

Some ODPs, which are established solely for obstacle avoidance, require a climb in visual conditions to cross the airport, a fix, or a NAVAID in a specified direction, at or above a specified altitude. These procedures are called Visual Climb Over Airport (VCOA). To ensure safe and efficient operations, the pilot must verbally request approval from ATC to fly the VCOA when requesting their IFR clearance.

At some locations where an ODP has been established, a diverse vector area (DVA) may be created to allow radar vectors to be used in lieu of an ODP. DVA information will state that headings will be as assigned by ATC and climb gradients, when applicable, will be published immediately following the specified departure procedure.

Graphic DPs designed by ATC to standardize traffic flows, ensure aircraft separation and enhance capacity are referred to as "Standard Instrument Departures (SIDs)". SIDs also provide obstacle clearance and are published under the appropriate airport section. ATC clearance must be received prior to flying a SID.

CIVIL USERS NOTE: Title 14 Code of Federal Regulations Part 91 prescribes standard takeoff rules and establishes takeoff minimums for certain operators as follows: (1) Aircraft having two engines or less - one statute mile. (2) Aircraft having more than two engines - one-half statute mile. These standard minima apply in the absence of any different minima listed below.

MILITARY USERS NOTE: Civil (nonstandard) takeoff minima are published below. For military takeoff minima, refer to appropriate service directives.

NAME	TAKEOFF MINIMUMS	NAME	TAKEOFF MINIMUMS
<b>AGUADILLA, PR</b>		<b>APALACHICOLA, FL</b>	
RAFAEL HERNANDEZ (BQN)		APALACHICOLA RGNL-CLEVE	
TAKEOFF MINIMUMS AND (OBSTACLE)		RANDOLPH FIELD (AAF)	
DEPARTURE PROCEDURES		TAKEOFF MINIMUMS AND (OBSTACLE)	
ORIG 09071 (FAA)		DEPARTURE PROCEDURES	
DEPARTURE PROCEDURE: <b>Rwy 8</b> , climb on a heading between 262° CW to 158° from DER. <b>Rwy 26</b> , climb on a heading between 230° CW to 082° from DER.		AMDT 1A 14205 (FAA)	
NOTE: <b>Rwy 8</b> , vehicles on roadway beginning 1489' from DER, left and right of centerline, up to 15' AGL/242' MSL. <b>Rwy 26</b> , vehicles on roadway beginning 751' from DER, left and right of centerline, up to 17' AGL/275' MSL. Trees beginning 939' from DER, 447' right of centerline, up to 100' AGL/343' MSL.		NOTE: <b>Rwy 6</b> , trees beginning 1152' from DER, 97' left of centerline, up to 83' AGL/101' MSL. Trees beginning 22' from DER, 14' right of centerline, up to 89' AGL/108' MSL. <b>Rwy 14</b> , trees beginning 32' from DER, 63' left of centerline, up to 78' AGL/97' MSL. Trees beginning 2137' from DER, 67' right of centerline, up to 89' AGL/99' MSL. <b>Rwy 18</b> , tree beginning 513' from DER, 193' right of centerline, 100' AGL/120' MSL. <b>Rwy 24</b> , trees beginning 71' from DER, 77' left of centerline, up to 76' AGL/88' MSL. Poles beginning 583' from DER, 268' left of centerline, up to 28' AGL/47' MSL. Bush 1018' from DER, 394' left of centerline, 30' AGL/47' MSL. <b>Rwy 32</b> , trees beginning 52' from DER, 88' left of centerline, up to 69' AGL/82' MSL. Trees beginning 137' from DER, 75' right of centerline, up to 71' AGL/87' MSL. <b>Rwy 36</b> , trees beginning 3408' from DER, 327' left of centerline, 100' AGL/113' MSL. Tree 1397' from DER, 441' right of centerline, 100' AGL/109' MSL.	

#### AGUADILLA, PR

RAFAEL HERNANDEZ (BQN)

TAKEOFF MINIMUMS AND (OBSTACLE)

DEPARTURE PROCEDURES

ORIG 09071 (FAA)

DEPARTURE PROCEDURE: **Rwy 8**, climb on a heading between 262° CW to 158° from DER. **Rwy 26**, climb on a heading between 230° CW to 082° from DER.

NOTE: **Rwy 8**, vehicles on roadway beginning 1489' from DER, left and right of centerline, up to 15' AGL/242' MSL. **Rwy 26**, vehicles on roadway beginning 751' from DER, left and right of centerline, up to 17' AGL/275' MSL. Trees beginning 939' from DER, 447' right of centerline, up to 100' AGL/343' MSL.

#### APALACHICOLA, FL

APALACHICOLA RGNL-CLEVE

RANDOLPH FIELD (AAF)

TAKEOFF MINIMUMS AND (OBSTACLE)

DEPARTURE PROCEDURES

AMDT 1A 14205 (FAA)

NOTE: **Rwy 6**, trees beginning 1152' from DER, 97' left of centerline, up to 83' AGL/101' MSL. Trees beginning 22' from DER, 14' right of centerline, up to 89' AGL/108' MSL. **Rwy 14**, trees beginning 32' from DER, 63' left of centerline, up to 78' AGL/97' MSL. Trees beginning 2137' from DER, 67' right of centerline, up to 89' AGL/99' MSL. **Rwy 18**, tree beginning 513' from DER, 193' right of centerline, 100' AGL/120' MSL. **Rwy 24**, trees beginning 71' from DER, 77' left of centerline, up to 76' AGL/88' MSL. Poles beginning 583' from DER, 268' left of centerline, up to 28' AGL/47' MSL. Bush 1018' from DER, 394' left of centerline, 30' AGL/47' MSL. **Rwy 32**, trees beginning 52' from DER, 88' left of centerline, up to 69' AGL/82' MSL. Trees beginning 137' from DER, 75' right of centerline, up to 71' AGL/87' MSL. **Rwy 36**, trees beginning 3408' from DER, 327' left of centerline, 100' AGL/113' MSL. Tree 1397' from DER, 441' right of centerline, 100' AGL/109' MSL.

15008

# TAKEOFF MINIMUMS, (OBSTACLE) DEPARTURE PROCEDURES, AND DIVERSE VECTOR AREA (RADAR VECTORS)

# TAKEOFF MINIMUMS, (OBSTACLE) DEPARTURE PROCEDURES, AND DIVERSE VECTOR AREA (RADAR VECTORS)

15008

## APOPKA, FL

ORLANDO APOPKA (X04)

TAKEOFF MINIMUMS AND (OBSTACLE)  
DEPARTURE PROCEDURES  
ORIG 12264 (FAA)

TAKEOFF MINIMUMS: **Rwy 15**, 300-2 or std. w/min. climb of 263' per NM to 400. **Rwy 33**, 400-1 $\frac{3}{4}$  or std. w/min. climb of 325' per NM to 600.

NOTE: **Rwy 15**, trees beginning at DER, 173' left of centerline, up to 100' AGL/229' MSL. Railroad and vehicles beginning at DER, 181' left of centerline, up to 23' AGL/152' MSL. Trees beginning 214' from DER, 552' right of centerline, up to 100' AGL/189' MSL. Poles beginning 230' from DER, 239' left of centerline, up to 49' AGL/178' MSL. Tower 5781' from DER, 1326' left of centerline, 199' AGL/317' MSL. **Rwy 33**, trees beginning 2' from DER, 183' left of centerline, up to 100' AGL/249' MSL. Poles beginning 7' from DER, 61' right of centerline, up to 49' AGL/198' MSL. Railroad and vehicles beginning 36' from DER, 90' right of centerline, up to 23' AGL/172' MSL. Antenna 1166' from DER, 539' left of centerline, 29' AGL/173' MSL. Tower 1.2 NM from DER, 2338' left of centerline, 350' AGL/421' MSL.

## ARCADIA, FL

ARCADIA MUNI (X06)

TAKEOFF MINIMUMS AND (OBSTACLE)  
DEPARTURE PROCEDURES  
ORIG 14149 (FAA)

NOTE: **Rwy 5**, trees beginning 6' from DER, 107' left of centerline, up to 20' AGL/81' MSL. **Rwy 23**, vehicle on road 234' from DER, 538' right of centerline 15' AGL/74' MSL. Trees beginning 315' from DER, 120' left of centerline, up to 50' AGL/109' MSL. Trees beginning 340' from DER, 435' right of centerline, up to 40' AGL/95' MSL. Building 449' from DER, 409' left of centerline, 25' AGL/84' MSL.

## AVON PARK, FL

AVON PARK EXECUTIVE (AVO)

TAKEOFF MINIMUMS AND (OBSTACLE)  
DEPARTURE PROCEDURES  
AMDT 1 09351 (FAA)

TAKEOFF MINIMUMS: **Rwy 5**, 300-1 or std. w/ min. climb of 430' per NM to 500.

NOTE: **Rwy 5**, trees beginning 219' from DER, 84' left of centerline, up to 100' AGL/284' MSL. Trees beginning 1007' from DER, 298' right of centerline, up to 100' AGL/289' MSL. Building 327' from DER, 431' right of centerline, 21' AGL/182' MSL. **Rwy 10**, buildings beginning 293' from DER, 251' left of centerline, up to 30' AGL/285' MSL. Line of trees beginning 298' from DER, 149' right to 229' left of centerline, up to 100' AGL/269' MSL. **Rwy 23**, trees beginning 52' from DER, 118' right of centerline, up to 26' AGL/186' MSL. Trees beginning 23' from DER, 93' left of centerline, up to 38' AGL/198' MSL. Power lines beginning 2691' from DER, 1019' left to 2034' right of centerline, up to 79' AGL/235' MSL. **Rwy 28**, numerous trees beginning 371' from DER, 218' right of centerline, up to 100' AGL/259' MSL. Buildings and light poles beginning 1491' from DER, 187' left of centerline, up to 40' AGL/194' MSL. Power pylons beginning 2082' from DER, 935' left to 252' right of centerline, up to 79' AGL/233' MSL.

## BARTOW, FL

BARTOW MUNI (BOW)

TAKEOFF MINIMUMS AND (OBSTACLE)  
DEPARTURE PROCEDURES  
ORIG 08157 (FAA)

NOTE: **Rwy 5**, trees beginning 816' from DER, 7' left of centerline, up to 79' AGL/198' MSL. Trees beginning 164' from DER, 9' right of centerline, up to 65' AGL/184' MSL. **Rwy 9L**, vehicles on roadway and trees beginning 16' from DER, 19' left of centerline, up to 55' AGL/174' MSL. Trees beginning 49' from DER, 54' right of centerline, up to 54' AGL/173' MSL. **Rwy 9R**, trees beginning 637' from DER, 113' left of centerline, up to 64' AGL/173' MSL. Trees beginning 1311' from DER, 253' right of centerline, up to 69' AGL/178' MSL. **Rwy 23**, trees beginning 143' from DER, 87' left of centerline, up to 72' AGL/191' MSL. Trees beginning 419' from DER, 33' right of centerline, up to 100' AGL/239' MSL. **Rwy 27L**, trees beginning 939' from DER, 644' left of centerline, up to 100' AGL/249' MSL. Trees beginning 2007' from DER, 517' right of centerline, up to 36' AGL/175' MSL. Tower 2880' from DER, 1015' left of centerline, 50' AGL/188' MSL. **Rwy 27R**, trees beginning 2433' from DER, 1069' left of centerline, up to 100' AGL/249' MSL. Vehicles on roadway, poles and multiple trees beginning 1179' from DER, 260' right of centerline, up to 100' AGL/249' MSL.

## BOCA RATON, FL

BOCA RATON (BCT)

TAKEOFF MINIMUMS AND (OBSTACLE)  
DEPARTURE PROCEDURES  
ORIG 06271 (FAA)

TAKEOFF MINIMUMS: **Rwy 23**, 300-1, or std. w/ a min. climb of 230' per NM to 300. Alternatively, with standard takeoff minimums and a normal 200'/NM climb gradient, takeoff must occur no later than 1700' prior to DER.

NOTE: **Rwy 5**, numerous trees and poles beginning 185' from DER, 20' left of centerline, up to 35' AGL/49' MSL. Numerous trees and poles beginning 6' from DER, 267' right of centerline, up to 28' AGL/45' MSL. **Rwy 23**, numerous trees, poles, and buildings beginning 278' from DER, 41' left of centerline, up to 137' AGL/154' MSL. Numerous trees, poles and buildings beginning 626' from DER, 171' right of centerline, up to 154' AGL/171' MSL.

## BONIFAY, FL

TRI COUNTY (1J0)

TAKEOFF MINIMUMS AND (OBSTACLE)  
DEPARTURE PROCEDURES  
ORIG 88098 (FAA)

DEPARTURE PROCEDURE: **Rwys 1, 19**, climb runway heading to 2000 before turning west.

15008

# TAKEOFF MINIMUMS, (OBSTACLE) DEPARTURE PROCEDURES, AND DIVERSE VECTOR AREA (RADAR VECTORS)

# TAKEOFF MINIMUMS, (OBSTACLE) DEPARTURE PROCEDURES, AND DIVERSE VECTOR AREA (RADAR VECTORS)

15008

## BROOKSVILLE, FL

BROOKSVILLE-TAMPA BAY RGNL (BKV)

TAKEOFF MINIMUMS AND (OBSTACLE)  
DEPARTURE PROCEDURES

ORIG-A 14205 (FAA)

TAKEOFF MINIMUMS: **Rwy 9**, 300-1¼ or std. w/ a min. climb of 220' per NM to 300, or alternatively, with standard takeoff minimums and a normal 200'/NM climb gradient, takeoff must occur no later than 1200' prior to DER.

NOTE: **Rwy 3**, obstruction light and trees beginning 297' from DER, 34' right of centerline, up to 81' AGL/151' MSL. Trees beginning 1681' from DER, 29' left of centerline, up to 83' AGL/153' MSL. **Rwy 9**, trees 9' from DER, 287' right of centerline, up to 69' AGL/73' MSL. Trees beginning 2021' left and right of centerline, up to 92' AGL/171' MSL. **Rwy 21**, pole and trees beginning 46' from DER, 27' right of centerline, up to 70' AGL/138' MSL. Building and trees beginning 108' from DER, 39' left of centerline, up to 85' AGL/155' MSL. **Rwy 27**, trees 2143' from DER, 891' left of centerline, up to 89' AGL/189' MSL. Trees 4755' from DER, 1684' right of centerline, up to 99' AGL/199' MSL.

## CAPE CANAVERAL AFS SKID STRIP

(KXMR)

COCOA BEACH, FL

TAKEOFF MINIMUMS AND (OBSTACLE)

DEPARTURE PROCEDURES

AMDT 1, 14261

DEPARTURE PROCEDURES: **Rwy 13**, diverse departure authorized. **Rwy 31**, diverse departure authorized 322° CCW to 143° only.

TAKE-OFF OBSTACLES: **Rwy 13**, terrain 254' from DER, 568' right of cntrln, 16' MSL. Terrain 12' from DER, 372' right of cntrln, 13' MSL. Terrain at DER, 434' right of cntrln, 13' MSL. **Rwy 31**, contour and trees 3783' from DER, 1325' left of cntrln, 0' AGL/22' MSL. Contour and trees 4269' from DER, 236' right of cntrln, 0' AGL/27' MSL. Light pole 1795' from DER, 498' left of cntrln, 0' AGL/8' MSL. Pylon 4172' from DER, 380' right of cntrln, 56' AGL/79' MSL. Contour and trees 4276' from DER, 545' left of cntrln, 0' AGL/20' MSL. Pylon 3795' from DER, 363' left of cntrln, 56' AGL/77' MSL. Contour and trees 2042' from DER, 162' right of cntrln, 0' AGL/47' MSL. Contour and trees 2909' from DER, 1618' left of cntrln, 0' AGL/28' MSL. Pylon 3974' from DER, 8' right of cntrln, 56' AGL/83' MSL. Pylon 3426' from DER, 1073' left of cntrln, 56' AGL/66' MSL. Pylon 3627' from DER, 688' left of cntrln, 56' AGL/71' MSL.

## CHARLOTTE AMALIE, ST. THOMAS, VI

CYRIL E. KING (STT)

TAKEOFF MINIMUMS AND (OBSTACLE)  
DEPARTURE PROCEDURES

AMDT 1 08157 (FAA)

TAKEOFF MINIMUMS: **Rwy 10**, 400-1 with minimum climb of 462' per NM to 1400 or 2100-2½ for climb in visual conditions. **Rwy 28**, 800-3 or std. w/ min. climb of 366' per NM to 1000.

DEPARTURE PROCEDURE: **Rwy 10**, climbing right turn heading 120° to 2000 before turning north or for climb in visual conditions, cross Cyril E King airport at or above 2000 before proceeding on course. **Rwy 28**, climb heading 280° to 2000 before turning north.

NOTE: **Rwy 10**, antenna on building 258' from DER, 485' left of centerline, 25' AGL/41' MSL. Multiple trees beginning 729' from DER, 244' right of centerline up to 100' AGL/259' MSL. Pole 300' from DER, 430' right of centerline, 23' AGL/39' MSL. **Rwy 28**, antenna 33' from DER, 412' left of centerline, 16' AGL/29' MSL. Bush 175' from DER, 178' right of centerline, 2' AGL/29' MSL. Bush 206' from DER, 121' left of centerline, 2' AGL/29' MSL. Trees beginning 2.39 NM from DER, 4351' right of centerline, 100' AGL/710' MSL.

## CHRISTIANSTED, ST. CROIX, VI

HENRY E. ROHLSEN (STX)

TAKEOFF MINIMUMS AND (OBSTACLE)  
DEPARTURE PROCEDURES

AMDT 9 14149 (FAA)

TAKEOFF MINIMUMS: **Rwy 10**, 300-1¼ or std. w/min. climb of 300' per NM to 300.

DEPARTURE PROCEDURE: **Rwy 10**, climb heading 108° to 1300 before proceeding on course. **Rwy 28**, climb heading 277° to 1200 before proceeding on course.

NOTE: **Rwy 10**, bushes beginning 103' from DER, 283' right of centerline, up to 10' AGL/32' MSL. Pole 794' from DER, 572' right of centerline, up to 29' AGL/44' MSL. Bushes beginning 127' from DER, 324' left of centerline, up to 10' AGL/34' MSL. Pole 595' from DER, 653' left of centerline, up to 41' AGL/62' MSL. Trees beginning 935' from DER, 562' left of centerline, up to 29' AGL/70' MSL. Refinery buildings beginning 5289' from DER, 798' left of centerline, up to 203' AGL/231' MSL. **Rwy 28**, trees beginning 517' from DER, 553' right of centerline, up to 53' AGL/114' MSL. Tower 1499' from DER, 802' right of centerline, 50' AGL/140' MSL.

## CLEWISTON, FL

AIRGLADES (2IS)

TAKEOFF MINIMUMS AND (OBSTACLE)  
DEPARTURE PROCEDURES

ORIG 09071 (FAA)

NOTE: **Rwy 31**, vehicle on road, 362' from DER, 578' right of centerline, 15' AGL/38' MSL.

15008

# TAKEOFF MINIMUMS, (OBSTACLE) DEPARTURE PROCEDURES, AND DIVERSE VECTOR AREA (RADAR VECTORS)

# TAKEOFF MINIMUMS, (OBSTACLE) DEPARTURE PROCEDURES, AND DIVERSE VECTOR AREA (RADAR VECTORS)

15008

## CRESTVIEW, FL

BOB SIKES (CEW)

TAKEOFF MINIMUMS AND (OBSTACLE)

DEPARTURE PROCEDURES

ORIG 08213 (FAA)

NOTE: **Rwy 17**, trees beginning 92' from DER, 248' right of centerline up to 100' AGL/203' MSL. Trees beginning 171' from DER, 9' left of centerline, up to 100' AGL/205' MSL. **Rwy 35**, trees beginning 329' from DER, 222' right of centerline up to 100' AGL/272' MSL. Trees beginning 152' from DER, 184' left of centerline, up to 100' AGL/278' MSL.

## CROSS CITY, FL

CROSS CITY (CTY)

TAKEOFF MINIMUMS AND (OBSTACLE)

DEPARTURE PROCEDURES

ORIG 08157 (FAA)

NOTE: **Rwy 4**, trees beginning 527' from DER, left and right of centerline, up to 100' AGL/149' MSL. **Rwy 13**, trees beginning 158' from DER, left and right of centerline, up to 100' AGL/149' MSL. Tank 3302' from DER, 927' right of centerline, 101' AGL/141' MSL. **Rwy 22**, trees beginning 1510' from DER, left and right of centerline, up to 100' AGL/149' MSL. Power lines 2807' from DER, 58' left of centerline, 73' AGL/114' MSL. **Rwy 31**, trees beginning 195' from DER, left and right of centerline, up to 100' AGL/149' MSL.

## CRYSTAL RIVER, FL

CRYSTAL RIVER-CAPTAIN TOM DAVIS

FIELD (CGC)

TAKEOFF MINIMUMS AND (OBSTACLE)

DEPARTURE PROCEDURES

ORIG-A 14345 (FAA)

TAKEOFF MINIMUMS: **Rwy 9**, std. w/ min. climb of 260' per NM to 600, or 500-2/4 with min. climb of 210' per NM to 900, or 900-2/2 for climb in visual conditions. **Rwys 18, 36**, NA-Environmental.

DEPARTURE PROCEDURE: **Rwy 9**, climb heading 096° to 700 before turning right, or for climb in visual conditions cross Crystal River-Tom Davis Field at or above 800 before proceeding on course.

NOTE: **Rwy 9**, vehicles on road beginning 6' from DER, from left to right of centerline, up to 15' AGL/24' MSL. Multiple trees beginning 364' from DER, from 680' left of centerline to 820' right of centerline, up to 100' AGL/129' MSL. **Rwy 27**, trees 17' from DER, 484' right of centerline, up to 100' AGL/109' MSL. Vehicles on road beginning 368' from DER, from left to right of centerline, up to 15' AGL/24' MSL. Power line beginning 474' from DER, from left to right of centerline, up to 26' AGL/45' MSL. Building 916' from DER, on centerline, 26' AGL/35' MSL. Multiple trees beginning 762' from DER, from 915' left of centerline to 641' right of centerline, up to 100' AGL/119' MSL.

## DAYTONA BEACH, FL

DAYTONA BEACH INTL (DAB)

TAKEOFF MINIMUMS AND (OBSTACLE)

DEPARTURE PROCEDURES

AMDT 4 09239 (FAA)

NOTE: **Rwy 7L**, multiple trees beginning 1834' from DER, 646' right of centerline, up to 64' AGL/95' MSL. **Rwy 7R**, tower, trees beginning 1042' from DER, 413' right of centerline, up to 100' AGL/135' MSL. Hanger, multiple trees beginning 901' from DER, 55' left of centerline, up to 67' AGL/101' MSL. **Rwy 16**, multiple trees beginning 57' from DER, 19' left of centerline, up to 75' AGL/104' MSL. Multiple trees beginning 871' from DER, 3' right of centerline, up to 83' AGL/112' MSL. **Rwy 25L**, multiple trees beginning 123' from DER, 75' left of centerline, up to 80' AGL/109' MSL. Multiple trees and antenna beginning 1002' from DER, 85' right of centerline, up to 72' AGL/101' MSL. **Rwy 25R**, multiple trees, signs, and poles beginning 428' from DER, 38' right of centerline, up to 88' AGL/115' MSL. Multiple trees beginning 1254' from DER, 41' left of centerline, up to 84' AGL/108' MSL. **Rwy 34**, multiple trees, building and obstruction light beginning 1013' from DER, 90' left of centerline, up to 82' AGL/111' MSL. Multiple trees, beginning 1108' from DER, 6' right of centerline, up to 78' AGL/107' MSL.

## DEFUNIAK SPRINGS, FL

DEFUNIAK SPRINGS (54J)

TAKEOFF MINIMUMS AND (OBSTACLE)

DEPARTURE PROCEDURES

ORIG 09127 (FAA)

TAKEOFF MINIMUMS: **Rwy 9**, 400-2/4 or std. w/ min. climb of 254' per NM to 800. **Rwys 18,36**, NA - dirt. NOTE: **Rwy 9**, multiple roads, railroad, building, fence, light on pole, poles, signs, towers and trees beginning 25' from DER, 1' left of centerline, up to 431' AGL/617' MSL. Multiple trees and roads beginning 71' from DER, 118' right of centerline, up to 74' AGL/343' MSL. **Rwy 27**, multiple trees, poles, fences, roads and building beginning 8' from DER, 39' left of centerline, up to 64' AGL/353' MSL. Multiple trees, poles, roads, buildings and light on pole beginning 82' from DER, 15' right of centerline, up to 53' AGL/342' MSL.

## DELAND, FL

DELAND MUNI/SIDNEY H. TAYLOR FIELD

(DED)

TAKEOFF MINIMUMS AND (OBSTACLE)

DEPARTURE PROCEDURES

AMDT 3 06159 (FAA)

DEPARTURE PROCEDURE: **Rwy 5**, climb via heading 054° to 1800 before proceeding on course. **Rwy 12**, climb via heading 122° to 1800 before proceeding on course. **Rwy 23**, climb via heading 234° to 1800 before proceeding on course. **Rwy 30**, climb via heading 302° to 1800 before proceeding on course.

NOTE: **Rwy 5**, numerous trees beginning 64' from DER, 245' left of centerline, up to 100' AGL/143' MSL. Numerous trees beginning 869' from DER, 410' right of centerline, up to 100' AGL/154' MSL. **Rwy 12**, numerous trees beginning 154' from DER, 129' left of centerline, up to 100' AGL/153' MSL. Numerous trees beginning 456' from DER, 289' right of centerline, up to 100' AGL/162' MSL. **Rwy 30**, numerous trees beginning 624' from DER, 9' left of centerline, up to 100' AGL/156' MSL. Numerous trees beginning 159' from DER, 341' right of centerline, up to 100' AGL/162' MSL. **Rwy 23**, light pole and numerous trees beginning 381' from DER, 44' right of centerline, up to 100' AGL/132' MSL. Pole, building, vent on building, hangar, and trees beginning 164' from DER, 26' left of centerline, up to 100' AGL/129' MSL.

08 JAN 2015 to 05 FEB 2015

08 JAN 2015 to 05 FEB 2015

15008

# TAKEOFF MINIMUMS, (OBSTACLE) DEPARTURE PROCEDURES, AND DIVERSE VECTOR AREA (RADAR VECTORS)



15008

**DESTIN, FL**

DESTIN-FORT WALTON BEACH (DTS)  
TAKEOFF MINIMUMS AND (OBSTACLE)  
DEPARTURE PROCEDURES

ORIG-A 10182 (FAA)

TAKEOFF MINIMUMS: **Rwy 14**, 200-1 or std. w/ min. climb of 252' per NM to 300.

DEPARTURE PROCEDURE: **Rwy 14**, climb runway heading to 400 before making turn.

NOTE: **Rwy 14**, trees beginning 175' from DER, 351' left of centerline, up to 50' AGL/71' MSL. Buildings/rods beginning 3753' from DER, 76' left of centerline, up to 150' AGL/176' MSL. Buildings/rods 261' from DER, 76' right of centerline, up to 129' AGL/139' MSL. **Rwy 32**, trees beginning 65' from DER, 14' left of centerline, up to 50' AGL/83' MSL. Buildings/poles beginning 240' from DER, 457' left of centerline, up to 30' AGL/54' MSL. Trees beginning 78' from DER, 17' right of centerline, up to 50' AGL/84' MSL.

**DUNNELLON, FL**

MARION COUNTY (X35)  
TAKEOFF MINIMUMS AND (OBSTACLE)  
DEPARTURE PROCEDURES

AMDT 1 12152 (FAA)

NOTE: **Rwy 5**, trees beginning 308' from DER, 265' right of centerline, 100' AGL/179' MSL. Trees beginning 114' from DER, 170' left of centerline, 100' AGL/199' MSL. **Rwy 9**, trees beginning 85' from DER, 276' right of centerline, 100' AGL/164' MSL. Trees beginning 82' from DER, 311' left of centerline, 100' AGL/164' MSL. **Rwy 23**, trees beginning 1100' from DER, 431' right of centerline, 100' AGL/179' MSL. Trees beginning 601' from DER, 610' left of centerline, 100' AGL/169' MSL. **Rwy 27**, trees beginning 268' from DER, 404' right of centerline, 100' AGL/169' MSL. Trees beginning 363' from DER, 273' left of centerline, 100' AGL/179' MSL.

**FERNANDINA BEACH, FL**

FERNANDINA BEACH MUNI (FHB)  
TAKEOFF MINIMUMS AND (OBSTACLE)  
DEPARTURE PROCEDURES

AMDT 1 13262 (FAA)

NOTE: **Rwy 4**, trees beginning 317' from DER, 11' left of centerline, up to 100' AGL/110' MSL. Wall 77' from DER, 301' left of centerline, 6' AGL/20' MSL. Vehicle on road 552' from DER, 437' left of centerline, 15' AGL/29' MSL. Poles beginning 178' from DER, 441' left of centerline, 39' AGL/52' MSL. Fence 71' from DER, 311' left of centerline, 10' AGL/23' MSL. Trees beginning 660' from DER, 4' right of centerline, up to 105' AGL/115' MSL. Signs beginning 112' from DER, 292' right of centerline, up to 78' AGL/92' MSL. **Rwy 9**, trees beginning 210' from DER, 15' left of centerline, up to 92' AGL/107' MSL. Vehicle on road 463' from DER, 252' left of centerline, 15' AGL/30' MSL. Trees beginning 39' from DER, 17' right of centerline, up to 82' AGL/97' MSL. Vehicle on road beginning 422' from DER, 129' right of centerline, 15' AGL/30' MSL. **Rwy 13**, trees beginning 503' from DER, 7' left of centerline, up to 84' AGL/99' MSL. Vehicle on road beginning 426' from DER, 309' left of centerline 15' AGL/up to 35' MSL. Trees beginning 19' from DER, 12' right of centerline, up to 85' AGL/100' MSL. Vehicle on road beginning 355' from DER, 70' right of centerline, up to 15' AGL/31' MSL. Multiple buildings beginning 4513' from DER, 286' right of centerline, up to 119' AGL/141' MSL. **Rwy 22**, trees beginning 55' from DER, 118' left of centerline, up to 78' AGL/83' MSL. Fence beginning 64' from DER, 267' left of centerline, 10' AGL/22' MSL. Trees beginning 42' from DER, 210' right of centerline, up to 95' AGL/100' MSL. Navaid 10' from DER, 85' right of centerline, 2' AGL/14' MSL. Boat mast 2903' from DER, 336' right of centerline, up to 86' MSL. **Rwy 27**, trees beginning 195' from DER, 30' left of centerline, up to 99' AGL/104' MSL. Trees beginning 836' from DER, 42' right of centerline, up to 96' AGL/101' MSL. Bush 338' from DER, 186' right of centerline, 11' AGL/21' MSL. **Rwy 31**, trees beginning 29' from DER, 216' left of centerline, up to 96' AGL/101' MSL. Bush 24' from DER, 379' left of centerline, 11' AGL/21' MSL. Trees beginning 646' from DER, 561' right of centerline, up to 71' AGL/81' MSL.

08 JAN 2015 to 05 FEB 2015

08 JAN 2015 to 05 FEB 2015

15008



# TAKEOFF MINIMUMS, (OBSTACLE) DEPARTURE PROCEDURES, AND DIVERSE VECTOR AREA (RADAR VECTORS)

15008

## FORT LAUDERDALE, FL

### FORT LAUDERDALE EXECUTIVE (FXE)

#### TAKEOFF MINIMUMS AND (OBSTACLE) DEPARTURE PROCEDURES

AMDT 4 14261 (FAA)

DEPARTURE PROCEDURE: **Rwy 27**, climb heading 271° to 600 before turning left.

NOTE: **Rwy 9**, building 833' from DER, 721' left of centerline, 40' AGL/51' MSL. Tree 1903' from DER, 484' right of centerline, 85' AGL/89' MSL. Building 4130' from DER, 41' right of centerline, 122' AGL/129' MSL. Building 4720' from DER, 78' right of centerline 150' AGL/159' MSL. **Rwy 13**, buildings beginning 2' from DER, 465' left and 303' right of centerline, up to 32' AGL/42' MSL. Trees, poles and buildings beginning 452' from DER, 290' left and 167' right of centerline up to 45' AGL/54' MSL. Trees beginning 1976' from DER, 259' right of centerline, up to 92' AGL/101' MSL. Tower 5130' from DER, 1826' right of centerline, 139' AGL/147' MSL.

**Rwy 27**, trees beginning 2048' from DER, 256' left of centerline up to 105' AGL/116' MSL. **Rwy 31**, trees and pole beginning 703' from DER, 338' right of centerline, up to 66' AGL/81' MSL. Building 1289' from DER, 290' left of centerline, 43' AGL/53' MSL.

## FORT LAUDERDALE-HOLLYWOOD INTL (FLL)

#### TAKEOFF MINIMUMS AND (OBSTACLE) DEPARTURE PROCEDURES

AMDT 6 14261 (FAA)

DEPARTURE PROCEDURE: **Rwy 28L**, climb heading 276° to 700 before turning left. **Rwy 28R**, climb heading 276° to 500 before turning left.

NOTE: **Rwy 10L**, approach light 296' from DER, on centerline, 11' AGL/15' MSL. Building 469' from DER, 378' left of centerline, 13' AGL/18' MSL. Lights beginning 496' from DER, from 28' left to 27' right of centerline, up to 16' AGL/20' MSL. Train on railroad beginning 510' from DER, from 632' left to on centerline, 23' AGL/30' MSL. Light poles beginning 666' from DER, on centerline, up to 32' AGL/36' MSL. Poles and trees beginning 1290' from DER, 548' left and 633' right of centerline, up to 49' AGL/53' MSL. Trees and pole beginning 1975' from DER, 827' left and 271' right of centerline, up to 79' AGL/83' MSL. Bridge 2429' from DER, 1123' left of centerline, 65' AGL/70' MSL. **Rwy 10R**, trees beginning 199' from DER, 259' left of centerline, up to 21' AGL/86' MSL. Trees beginning 273' from DER, 181' right of centerline, up to 31' AGL/96' MSL. Trees beginning 495' from DER, 144' left of centerline, up to 44' AGL/109' MSL. **Rwy 28L**, tree 491' from DER, 444' left of centerline, 24' AGL/34' MSL. Trees beginning 773' from DER, 399' left of centerline, up to 80' AGL/90' MSL. Poles and trees beginning 865' from DER, 534' right of centerline, up to 81' AGL/91' MSL. Buildings, trees, and signs beginning 1317' from DER, 455' left of centerline, up to 100' AGL/109' MSL. Trees and pole beginning 1636' from DER, 290' right of centerline, up to 90' AGL/100' MSL. Towers beginning 3190' from DER, 666' right of centerline, up to 108' AGL/114' MSL. **Rwy 28R**, building and light pole beginning 260' from DER, 253' left of centerline and on centerline, up to 14' AGL/18' MSL. Vehicles on road beginning 323' from DER, from 28' left to 281' right of centerline, 15' AGL/21' MSL. Approach lights beginning 441' from DER, from 28' left to 27' right of centerline, up to 16' AGL/25' MSL. Vehicles on road beginning 455' from DER, from 647' left to 685' right of centerline, up to 17' AGL/33' MSL. Approach lights beginning 652' from DER, on centerline, up to 24' AGL/33' MSL. Train on railroad beginning 849' from DER, from 683' left to 379' right of centerline, up to 23' AGL/34' MSL. Trees and sign beginning 1017' from DER, 122' left of centerline, up to 63' AGL/72' MSL. Trees beginning 2231' from DER, 354' left of centerline, up to 88' AGL/97' MSL. Trees beginning 2286' from DER, 530' right of centerline, up to 108' AGL/112' MSL.

15008

# TAKEOFF MINIMUMS, (OBSTACLE) DEPARTURE PROCEDURES, AND DIVERSE VECTOR AREA (RADAR VECTORS)

## FORT MYERS, FL

### PAGE FIELD (FMY)

#### TAKEOFF MINIMUMS AND (OBSTACLE) DEPARTURE PROCEDURES

AMDT 5 09239 (FAA)

NOTE: **Rwy 5**, bush, train, and multiple trees beginning 81' from DER, 52' right of centerline, up to 73' AGL/90' MSL. Multiple antennas and trees beginning 330' from DER, 81' left of centerline, up to 70' AGL/86' MSL.

**Rwy 13**, bush, road, buildings and multiple trees beginning 66' from DER, 138' right of centerline, up to 52' AGL/66' MSL. Rod on light pole 306' from DER, 375' right of centerline, up to 22' AGL/37' MSL. Trees 644' from DER, 375' right of centerline, up to 72' AGL/87' MSL. Fence 241' from DER, 138' left of centerline, 10' AGL/24' MSL. Obstruction light on building 829' from DER, 447' left of centerline, 34' AGL/48' MSL. **Rwy 23**, sign, concrete pole, obstruction light on pole, tree and antenna beginning 98' from DER, 95' right of centerline, up to 36' AGL/49' MSL. Vehicles, concrete pole, obstruction light on pole, and trees beginning 288' from DER, 8' left of centerline, up to 62' AGL/75' MSL. **Rwy 31**, concrete pole, power poles, light poles, floodlights, vehicles, trees, antenna towers and bridge beginning 5' from DER, 285' right of centerline up to 113' AGL/126' MSL. Power poles, concrete pole and trees beginning 67' from DER, 235' left of centerline, up to 74' AGL/88' MSL.

## SOUTHWEST FLORIDA INTL (RSW)

#### TAKEOFF MINIMUMS AND (OBSTACLE) DEPARTURE PROCEDURES

AMDT 1 07074 (FAA)

NOTE: **Rwy 6**, trees beginning 1398' from DER, 582' left of centerline, up to 84' AGL/104' MSL. Trees beginning 1763' from DER, 860' right of centerline, up to 95' AGL/115' MSL. **Rwy 24**, tree 1692' from DER, 916' right of centerline, 78' AGL/98' MSL.

08 JAN 2015 to 05 FEB 2015

08 JAN 2015 to 05 FEB 2015

**TAKEOFF MINIMUMS, (OBSTACLE) DEPARTURE PROCEDURES, AND  
DIVERSE VECTOR AREA (RADAR VECTORS)**

15008

**FORT PIERCE, FL**

ST. LUCIE COUNTY INTL (FPR)  
TAKEOFF MINIMUMS AND (OBSTACLE)  
DEPARTURE PROCEDURES  
AMDT 4 12152 (FAA)

TAKEOFF MINIMUMS: **Rwys 10L, 28R**, NA-  
Environmental.

NOTE: **Rwy 10R**, fence, bush, pole, and trees beginning 24' from DER, 195' left of centerline, up to 79' AGL/133' MSL. Tower and trees beginning 287' from DER, 265' right of centerline, up to 98' AGL/117' MSL. **Rwy 14**, trees beginning 1081' from DER, 528' left of centerline, up to 39' AGL/63' MSL. Pole and trees beginning 274' from DER, 488' right of centerline, up to 57' AGL/81' MSL. **Rwy 28L**, airport sign and trees beginning 41' from DER, 256' left of centerline, up to 72' AGL/91' MSL. Navaid and trees beginning 40' from DER, 152' right of centerline, up to 58' AGL/77' MSL. **Rwy 32**, trees beginning 1344' from DER, 123' left of centerline, up to 62' AGL/86' MSL. Fence and trees beginning 186' from DER, 153' right of centerline, up to 72' AGL/96' MSL.

**GAINESVILLE, FL**

GAINESVILLE RGNL (GNV)  
TAKEOFF MINIMUMS AND (OBSTACLE)  
DEPARTURE PROCEDURES

NOTE: **Rwy 7**, multiple trees beginning 1397' from DER, 348' left of centerline, up to 99' AGL/229' MSL. Multiple trees beginning 1444' from DER, 144' right of centerline, up to 72' AGL/202' MSL. **Rwy 11**, multiple trees beginning 653' from DER, 438' right of centerline, up to 30' AGL/134' MSL. Tree 522' from DER, 402' left of centerline, 18' AGL/122' MSL. **Rwy 25**, tower and multiple trees beginning 2415' from DER, 9' left of centerline, up to 126' AGL/291' MSL. Obstruction light on localizer and multiple trees beginning 208' from DER, 463' right of centerline, up to 82' AGL/243' MSL. **Rwy 29**, multiple trees beginning 1279' from DER, 8' right of centerline, up to 76' AGL/233' MSL. Multiple trees beginning 2679' from DER, 366' left of centerline, up to 88' AGL/240' MSL.

**HOLLYWOOD, FL**

NORTH PERRY (HWO)  
TAKEOFF MINIMUMS AND (OBSTACLE)  
DEPARTURE PROCEDURES  
AMDT 5 13234 (FAA)

TAKEOFF MINIMUMS: **Rwys 10L, 10R**, std. w/min. climb of 500' per NM to 1400 or 1400-2½ for climb in visual conditions.

DEPARTURE PROCEDURE: **Rwy 1R**, climb heading 006° to 900 before turning right. **Rwy 1L**, climb heading 006° to 900 before turning right. **Rwys 10R,10L**, for climb in visual conditions cross North Perry airport at or above 1400 before proceeding on course, when executing VCOA, notify ATC prior to departure. **Rwys 19R,19L**, climb heading 186° to 1300 before turning left. **Rwys 28R,28L**, climb heading 276° to 1000 before proceeding on course.

NOTE: **Rwy 1R**, multiple trees beginning 54' from DER, 215' right of centerline, up to 60' AGL/68' MSL. Multiple trees beginning 1312' from DER, 85' left of centerline, up to 68' AGL/74' MSL. Multiple poles beginning 50' from DER, 341' right of centerline up to 62' AGL/68' MSL. Multiple poles beginning 979' from DER, 646' left of centerline, up to 49' AGL/55' MSL. Sign 106' from DER, 342' right of centerline, 7' AGL/13' MSL. **Rwy 1L**, vehicles on roadway beginning 45' from DER, 322' left of centerline, up to 15' AGL/22' MSL. Multiple trees beginning 169' from DER, 284' left of centerline up to 31' AGL/39' MSL. Multiple poles beginning 740' from DER, 376' left of centerline, up to 48' AGL/56' MSL. Multiple buildings beginning 163' from DER, 375' right of centerline up to 36' AGL/43' MSL. Multiple poles beginning 765' from DER, 386' right of centerline, up to 48' AGL/55' MSL. Multiple trees beginning 860' from DER, 2' left of centerline, up to 58' AGL/66' MSL. Multiple trees beginning 886' from DER, 46' right of centerline, up to 68' AGL/74' MSL. Crane 3214' from DER, 762' left of centerline, 111' AGL/117' MSL. Tower 3233' from DER, 1264' left of centerline, up to 150' AGL/158' MSL. **Rwy 10R**, pole 168' from DER, 543' right of centerline, 31' AGL/38' MSL. Buildings beginning 541' from DER, 377' right of centerline, up to 25' AGL/33' MSL. Multiple trees beginning 649' from DER, 20' right of centerline, up to 77' AGL/85' MSL. Multiple poles beginning 168' from DER, 543' left of centerline, up to 62' AGL/70' MSL. Multiple trees beginning 847' from DER, 152' left of centerline, up to 76' AGL/84' MSL. **Rwy 10L**, fence 113' from DER, 325' left of centerline, 8' AGL/14' MSL. Multiple trees beginning 272' from DER, 359' left of centerline, up to 39' AGL/46' MSL. Multiple poles beginning 660' from DER, 515' right of centerline, up to 61' AGL/69' MSL. Multiple trees beginning 1124' from DER, 67' right of centerline, up to 77' AGL/84' MSL. Pole 1085' from DER, 450' left of centerline, 40' AGL/47' MSL. Multiple trees beginning 1100' from DER, 44' left of centerline, up to 72' AGL/80' MSL. Tower 1.2 NM from DER, 2371' left of centerline, 194' AGL/204' MSL. **Rwy 19L**, vehicles on roadway 174' from DER, 222' right of centerline, up to 15' AGL/22' MSL. Multiple trees beginning 217' from DER, 35' right of centerline, up to 78' AGL/85' MSL. Multiple trees beginning 369' from DER, 20' left of centerline, up to 75' AGL/82' MSL. Building 288' from DER, 448' right of centerline, 15' AGL/23' MSL. Multiple buildings beginning 459' from DER, 478' left of centerline, up to 25' AGL/32' MSL. Multiple poles beginning 521' from DER, 29' left of centerline, up to 39' AGL/46' MSL. Multiple poles beginning 848' from DER, 99' right of centerline, up to 35' AGL/41' MSL.

08 JAN 2015 to 05 FEB 2015

08 JAN 2015 to 05 FEB 2015

15008

**TAKEOFF MINIMUMS, (OBSTACLE) DEPARTURE PROCEDURES, AND  
DIVERSE VECTOR AREA (RADAR VECTORS)**



# TAKEOFF MINIMUMS, (OBSTACLE) DEPARTURE PROCEDURES, AND DIVERSE VECTOR AREA (RADAR VECTORS)

## HOLLYWOOD, FL (CON'T)

### NORTH PERRY (CON'T)

**Rwy 19R**, multiple poles beginning 843' from DER, 35' right of centerline, up to 36' AGL/43' MSL. Multiple poles beginning 1070' from DER, 49' left of centerline, up to 36' AGL/43' MSL. Multiple trees beginning 962' from DER, 24' right of centerline, up to 68' AGL/76' MSL. Multiple trees beginning 1169' from DER, 165' left of centerline, up to 78' AGL/85' MSL. Tower 1335' from DER, 211' left of centerline, 68' AGL/74' MSL.

**Rwy 28L**, tower 911' from DER, 605' right of centerline, 55' AGL/61' MSL. Multiple poles beginning 978' from DER, 39' right of centerline, up to 72' AGL/80' MSL. Multiple poles beginning 1115' from DER, 49' left of centerline, up to 39' AGL/48' MSL. Multiple trees beginning 1259' from DER, 309' left of centerline, up to 82' AGL/90' MSL. Multiple trees beginning 1309' from DER, 391' right of centerline, up to 104' AGL/112' MSL. Building 1626' from DER, 29' left of centerline, 60' AGL/69' MSL. Multiple buildings beginning 1996' from DER, 22' right of centerline, up to 60' AGL/67' MSL. **Rwy 28R**, multiple trees beginning 15' from DER, 28' left of centerline, up to 105' AGL/112' MSL. Multiple trees beginning 17' from DER, 116' right of centerline, up to 82' AGL/90' MSL. Multiple poles beginning 687' from DER, 38' left of centerline, up to 59' AGL/65' MSL. Multiple poles beginning 965' from DER, 65' right of centerline, up to 39' AGL/47' MSL. Building 1804' from DER, 981' left of centerline, 50' AGL/59' MSL.

## HOMESTEAD, FL

### HOMESTEAD GENERAL AVIATION (X51)

#### TAKEOFF MINIMUMS AND (OBSTACLE)

#### DEPARTURE PROCEDURES

#### ORIG-A 13346 (FAA)

DEPARTURE PROCEDURE: **Rwy 36**, climb on a heading between 186° CW 046° from DER or minimum climb of 461' per NM to 2500 for headings 047° through 185°. **Rwy 10**, climb on a heading between 096° CW 275° from DER or minimum climb of 512' per NM to 2500 for headings 276° through 095°. **Rwy 18**, climb heading 185° to 1100 before proceeding North or Northeast. **Rwy 28**, climb heading 276° to 1100 before proceeding East or Northeast.

NOTE: **Rwy 36**, fence 231' from DER, 457' left of centerline, 5' AGL/14' MSL. **Rwy 10**, building 170' from DER, 415' right of centerline, 17' AGL/26' MSL.

**Rwy 28**, light pole 118' from DER, 371' left of centerline, 26' AGL/35' MSL.

## HOMESTEAD ARB (KHST)

### HOMESTEAD, FL

#### TAKEOFF MINIMUMS AND (OBSTACLE)

#### DEPARTURE PROCEDURES

#### ORIG 14317

DEPARTURE PROCEDURE: **Rwy 6**, Climb on a heading between 351° CW to 232° from DER. **Rwy 24**, Climb on a heading between 259° CCW to 053° from DER.

TAKE-OFF OBSTACLES: **Rwy 6**, Aircraft 37' inward of DER, 273' left of centerline, 65' AGL/70' MSL. Aircraft 37' inward of DER, 521' left of centerline, 65' AGL/70' MSL. Sign 54' from DER, 310' right of centerline, 5' AGL/ 8' MSL. Multiple trees 1697' from DER, 211' right of centerline, 25' AGL/28' MSL. Multiple trees 2005' from DER, 984' right of centerline, 89' AGL/94' MSL. Multiple trees 3468' from DER, 1335' right of centerline, 89' AGL/ 94' MSL. Multiple trees 3558' from DER, 355' left of centerline, 89' AGL/94' MSL. Multiple trees 3562' from DER, 394' left of centerline, 89' AGL/94' MSL. **Rwy 24**, Aircraft 37' inward of DER, 273' right of centerline, 65' AGL/70' MSL. Aircraft 37' inward of DER, 521' right of centerline, 65' AGL/70' MSL. Multiple trees 2401' from DER, 1143' right of centerline, up to 52' AGL/62' MSL. Multiple trees 2481' from DER, 790' right of centerline, up to 62' AGL/ 67' MSL.

## HURLBURT FLD (KHRT)

### MARY ESTHER, FL

#### TAKEOFF MINIMUMS AND (OBSTACLE)

#### DEPARTURE PROCEDURES

TAKEOFF OBSTACLES: **Rwy 36**, 85' AGL tree, 3140' from DER, 707' right of centerline.

## IMMOKALEE, FL

### IMMOKALEE RGNL (IMM)

#### TAKEOFF MINIMUMS AND (OBSTACLE)

#### DEPARTURE PROCEDURES

#### AMDT 1 09239 (FAA)

TAKEOFF MINIMUMS: **Rwy 18**, 300-2¼ or std. with a min. climb of 221' per NM to 500, or alternatively, with standard TAKEOFF minimums and a normal 200' per NM climb gradient, TAKEOFF must occur no later than 1900' prior to DER.

NOTE: **Rwy 9**, fence 45' from DER, 438' right of centerline, 4' AGL/38' MSL. Trees beginning 1144' from DER, 312' left of centerline, up to 100' AGL/134' MSL. **Rwy 18**, buildings beginning 255' from DER, 475' left of centerline, up to 16' AGL/50' MSL. Tree 2844' from DER, 1235' right of centerline, 100' AGL/134' MSL. Tower 1.7 NM from DER, 2984' right of centerline, 297' AGL/322' MSL. **Rwy 27**, fence 4' from DER, 473' right of centerline, 6' AGL/41' MSL. Trees beginning 187' from DER, 150' right of centerline, up to 40' AGL/79' MSL. Vehicle on road beginning 669' from DER, 508' right of centerline, 15' AGL/54' MSL. Trees beginning 732' from DER, 231' left of centerline, up to 53' AGL/87' MSL. Pole 1223' from DER, 50' right of centerline, 35' AGL/70' MSL. Pole 1320' from DER, 258' left of centerline, 35' AGL/69' MSL. **Rwy 36**, trees beginning 192' from DER, 262' left of centerline, up to 22' AGL/61' MSL. Trees beginning 411' from DER, 173' right of centerline, up to 23' AGL/57' MSL.

# TAKEOFF MINIMUMS, (OBSTACLE) DEPARTURE PROCEDURES, AND DIVERSE VECTOR AREA (RADAR VECTORS)

# TAKEOFF MINIMUMS, (OBSTACLE) DEPARTURE PROCEDURES, AND DIVERSE VECTOR AREA (RADAR VECTORS)

15008

## INVERNESS, FL

### INVERNESS (INF)

TAKEOFF MINIMUMS AND (OBSTACLE)

DEPARTURE PROCEDURES

ORIG 12096 (FAA)

TAKEOFF MINIMUMS: **Rwy 1**, 300-1½ or std. w/min. climb of 420' per NM to 500.

NOTE: **Rwy 1**, terrain beginning 110' from DER, 27' left of centerline, up to 49' MSL. Terrain beginning 137' from DER, 238' right of centerline, up to 49' MSL. Trees beginning 110' from DER, 293' left of centerline, up to 100' AGL/149' MSL. Vehicles on roadway 598' from DER, across centerline, up to 15' AGL/65' MSL. Trees beginning 785' from DER, on centerline, up to 100' AGL/149' MSL. Tower 5479' from DER, 1312' left of centerline, up to 220' AGL/279' MSL. Tower 5764' from DER, 1596' left of centerline, up to 164' AGL/250' MSL. Trees beginning 164' from DER, 238' right of centerline, up to 100' AGL/149' MSL. **Rwy 19**, trees beginning 340' from DER, 239' left of centerline, up to 100' AGL/169' MSL. Trees beginning 793' from DER, 596' right of centerline, up to 100' AGL/189' MSL. Trees beginning 2066' from DER, on centerline, up to 100' AGL/209' MSL. Trees beginning 2523' from DER, 274' right of centerline, up to 100' AGL/209' MSL.

## ISLA DE VIEQUES, PR

### ANTONIO RIVERA RODRIGUEZ (VQS)

TAKEOFF MINIMUMS AND (OBSTACLE)

DEPARTURE PROCEDURES

AMDT 2 10042 (FAA)

TAKEOFF MINIMUMS: **Rwy 9**, 500-2¼ w/ min. climb of 260' per NM to 900 or 1600-2½ for climb in visual conditions. **Rwy 27**, 500-2½ w/ min. climb of 280' per NM to 2700 or std. w/ min. climb of 570' per NM to 1300 or 1600-2½ for climb in visual conditions.DEPARTURE PROCEDURE: **Rwy 9**, climb heading 090° to 900 before proceeding on course or for climb in visual conditions, cross Antonio Rivera Rodriguez airport at or above 1500 before proceeding on course.**Rwy 27**, climb heading to 270° to 2700 before proceeding on course or for climb in visual conditions, cross Antonio Rivera Rodriguez airport at or above 1500 before proceeding on course.

NOTE: **Rwy 9**, vehicles on roadway beginning 26' from DER, left and right of centerline, up to 15' AGL/80' MSL. Trees beginning 70' from DER, 504' right of centerline, up to 100' AGL/165' MSL. Trees beginning 579' from DER, on centerline, up to 100' AGL/165' MSL. Trees beginning 1750' from DER, 956' right of centerline up to 100' AGL/493' MSL. **Rwy 27**, trees beginning 15' from DER, 225' left of centerline, up to 100' AGL/165' MSL. Trees beginning 16' from DER, 274' right of centerline, up to 100' AGL/165' MSL. Trees beginning 186' from DER, left and right of centerline, up to 100' AGL/165' MSL. Trees beginning 1206' from DER, 794' left of centerline, up to 100' AGL/493' MSL.

## JACKSONVILLE, FL

### CECIL (VQQ)

TAKEOFF MINIMUMS AND (OBSTACLE)

DEPARTURE PROCEDURES

ORIG 07186 (FAA)

NOTE: **Rwy 18L**, tree 1499' from DER, 699' right of centerline, 34' AGL/113' MSL.

## HERLONG RECREATIONAL (HEG)

TAKEOFF MINIMUMS AND (OBSTACLE)

DEPARTURE PROCEDURES

AMDT 2 12096 (FAA)

DEPARTURE PROCEDURE: **Rwy 7**, climb heading 071° to 800 before turning right. **Rwy 11**, climb heading 116° to 700 before turning left.

NOTE: **Rwy 7**, trees beginning 236' from DER, 53' right of centerline, up to 100' AGL/184' MSL. Trees beginning 376' from DER, 237' left of centerline, up to 100' AGL/179' MSL. **Rwy 11**, trees beginning 18' from DER, 70' left of centerline, up to 100' AGL/184' MSL. Trees beginning 163' from DER, 77' right of centerline, up to 100' AGL/184' MSL. **Rwy 25**, trees beginning 436' from DER, 433' right of centerline, up to 100' AGL/174' MSL. Trees beginning 1363' from DER, 355' left of centerline, up to 100' AGL/174' MSL. **Rwy 29**, trees beginning 1491' from DER, 178' right of centerline, up to 100' AGL/184' MSL. Trees beginning 1872' from DER, 64' left of centerline, up to 100' AGL/179' MSL.

## JACKSONVILLE EXECUTIVE AT CRAIG (CRG)

TAKEOFF MINIMUMS AND (OBSTACLE)

DEPARTURE PROCEDURES

AMDT 4 13066 (FAA)

TAKEOFF MINIMUMS: **Rwy 23**, std. w/min. climb of 360' per NM to 1500 or 1300-2½ for climb in visual conditions.DEPARTURE PROCEDURE: **Rwy 23**, for climb in visual conditions: cross Jacksonville Executive at Craig airport at or above 1200 before proceeding on course. When executing VCOA, notify ATC prior to departure. **Rwy 5**, climb heading 051° to 500 before proceeding on course.**Rwy 14**, climb heading 141° to 700 before turning right.

NOTE: **Rwy 5**, trees beginning 1617' from DER, 182' right of centerline, up to 100' AGL/143' MSL. Terrain beginning 17' from DER, beginning 179' left and right of centerline, 9' MSL. Trees beginning 1911' from DER, 113' left of centerline, up to 100' AGL/143' MSL. Pole and navaid beginning 571' from DER, 560' left of centerline, up to 41' AGL/82' MSL. **Rwy 14**, tree 2375' from DER, 905' right of centerline, 100' AGL/119' MSL. Terrain beginning 5' from DER, beginning 44' right and left of centerline, 56' MSL. Trees beginning 1848' from DER, 610' left of centerline, up to 100' AGL/128' MSL. **Rwy 23**, trees beginning 1601' from DER, 15' right of centerline, up to 100' AGL/119' MSL. Terrain beginning 9' from DER, beginning 278' left and right of centerline, 53' MSL. Trees beginning 519' from DER, 510' left of centerline, up to 100' AGL/133' MSL. Pole 1994' from DER, 580' left of centerline, 47' AGL/85' MSL. **Rwy 32**, trees beginning 494' from DER, 104' right of centerline, up to 67' AGL/99' MSL. Building 501' from DER, 251' right of centerline, 16' AGL/52' MSL. Terrain beginning 117' from DER, beginning 51' left and right of centerline, 50' MSL. Trees and bushes beginning 218' from DER, 222' left of centerline, up to 100' AGL/101' MSL.

08 JAN 2015 to 05 FEB 2015

08 JAN 2015 to 05 FEB 2015

15008

# TAKEOFF MINIMUMS, (OBSTACLE) DEPARTURE PROCEDURES, AND DIVERSE VECTOR AREA (RADAR VECTORS)

# TAKEOFF MINIMUMS, (OBSTACLE) DEPARTURE PROCEDURES, AND DIVERSE VECTOR AREA (RADAR VECTORS)

15008

## JACKSONVILLE, FL (CON'T)

JACKSONVILLE INTL (JAX)

TAKEOFF MINIMUMS AND (OBSTACLE)  
DEPARTURE PROCEDURES

AMDT 1 11349 (FAA)

NOTE: **Rwy 8**, bush 82' from DER, 261' right of centerline, 6' AGL/ 30' MSL. Trees beginning 2736' from DER, 428' right of centerline, up to 89' AGL/ 118' MSL. **Rwy 14**, electric equipment 79' from DER, 292' left of centerline, 3' AGL/27' MSL. Pole 754' from DER, 699' left of centerline, 33' AGL/ 52' MSL. Trees beginning 1761' from DER, 562' left of centerline, up to 100' AGL/ 121' MSL. Trees beginning 899' from DER, 151' right of centerline, up to 102' AGL/ 121' MSL. **Rwy 26**, Trees beginning 2340' from DER, 792' right of centerline, up to 80' AGL/ 102' MSL. **Rwy 32**, tree 2815' from DER, 690' left of centerline, 83' AGL/ 102' MSL. Trees beginning 2227' from DER, 575' right of centerline, up to 89' AGL/ 108' MSL.

## JACKSONVILLE NAS (TOWERS FIELD) (KNIP)

JACKSONVILLE, FL

TAKEOFF MINIMUMS AND (OBSTACLE)  
DEPARTURE PROCEDURES

09155

DEPARTURE PROCEDURES: **Rwy 10**, Diverse departures only between 095° through 275° CW. **Rwy 14**, Diverse departures only between 095° through 320° CW. **Rwy 32**, Diverse departures only between 351° through 141° CCW. TAKEOFF OBSTACLES: **Rwy 28**: Pole 1064' from DER, 782' left of centerline, 65' MSL. **Rwy 32**: Trees 222' from DER, 241' right of centerline, 56' MSL. Trees 430' from DER, 226' right of centerline, 46' MSL. Trees 680' from DER, 530' right of centerline, 59' MSL. Pole 750' from DER, 559' right of centerline, 67' MSL. Road and vehicle 769' from DER at Rwy centerline, 35' MSL. Trees 819' from DER, 642' left of centerline, 84' MSL. Pole 872' from DER, 285' left of centerline, 59' MSL. Trees 945' from DER, 137' left of centerline, 77' MSL. Trees 1048' from DER, 98' right of centerline, 72' MSL. Trees 1081' from DER, 185' right of centerline, 48' MSL. Trees 1317' from DER, 366' left of centerline, 94' MSL. Trees 1547' from DER, 421' left of centerline, 104' MSL. Trees 1737' from DER, 131' left of centerline, 108' MSL. Trees 1907' from DER, 462' left of centerline, 128' MSL. Trees 2037' from DER, 321' left of centerline, 130' MSL. Trees 2497' from DER, 561' left of centerline, 133' MSL. Tower 2744' from DER, 616' left of centerline, 87' MSL.

## KEY WEST, FL

KEY WEST INTL (EYW)

TAKEOFF MINIMUMS AND (OBSTACLE)  
DEPARTURE PROCEDURES

AMDT 1 06159

DEPARTURE PROCEDURE: **Rwys 9, 27**, climb on a heading between 087° clockwise to 033° from DER to avoid R-2916 and unmarked tethered balloon up to 14000 MSL.

NOTE: **Rwy 9**, rod on antenna, dome on building, poles, and numerous trees beginning 38' from DER, 199' right of centerline, up to 75' AGL/82' MSL. Obstruction light on building, pole, and numerous trees beginning 4' from DER, 220' left of centerline, up to 38' AGL/45' MSL. **Rwy 27**, pole and numerous trees beginning 27' from DER, 116' right of centerline, up to 83' AGL/90' MSL. Numerous bushes and trees beginning 202' from DER, 78' left of centerline, up to 37' AGL/44' MSL.

## KEY WEST NAS(BOCA CHICA FLD) (KNQX)

KEY WEST, FL

TAKEOFF MINIMUMS AND (OBSTACLE)  
DEPARTURE PROCEDURES

10042

DEPARTURE PROCEDURE: **Rwy 3**, Cross DER at or above 25' AGL/31' MSL. Diverse departures authorized between 028° CCW 216°. Left turn to departure heading only. **Rwy 7**, Diverse departures authorized 087° CW 257°. Crossing DER climb on heading 065° until reaching 3 DME from NQX TACAN, then turn right to departure heading. Other headings and left turns on departure expect radar vectors. Do not exceed 310 KIAS until established on heading or receiving radar vectors. If no vectors are received within 6 DME of NQX TACAN or 12 DME of EYW VORTAC, make climbing right turn direct EYW VORTAC for enroute aircraft and NQX TACAN for military aircraft intending use of local special use airspace. Turboprop cross VORTAC or TACAN at or above 3000, Turbojet cross VORTAC or TACAN at or above 5000. Do not exceed 310 KIAS until crossing VORTAC or TACAN. **Rwy 13**, Diverse departures authorized 084° CW 315°. **Rwy 21**, Diverse departures authorized 084° CW 315°. **Rwy 25**, Diverse departures authorized 084° CW 315°. **Rwy 31**, Diverse departures authorized 035° CCW 084°. TAKEOFF OBSTACLES: **Rwy 3**, Mast 58' AGL/63' MSL, 1374' from DER, 323' left of centerline. **Rwy 31**, Bldg 39' AGL/43' MSL, 1058' from DER, 558' right of centerline. Pole 54' AGL/58' MSL, 1551' from DER, 474' right of centerline.

## KEYSTONE HEIGHTS, FL

KEYSTONE AIRPARK (42J)

TAKEOFF MINIMUMS AND (OBSTACLE)  
DEPARTURE PROCEDURES

ORIG 09015 (FAA)

NOTE: **Rwy 5**, trees beginning 363' from DER, 503' left of centerline, up to 100' AGL/309' MSL. Trees beginning 1165' from DER, 331' right of centerline, up to 100' AGL/309' MSL. **Rwy 11**, trees beginning 995' from DER, on centerline, up to 100' AGL/309' MSL.

**Rwy 23**, trees beginning 375' from DER, on centerline, up to 87' AGL/257' MSL. Power lines beginning 2436' from DER, 24' right of centerline, up to 100' AGL/279' MSL. **Rwy 29**, trees beginning 0' from DER, 263' right of centerline, up to 100' AGL/289' MSL. Trees beginning 563' from DER, on centerline, up to 100' AGL/289' MSL. Power lines beginning 3048' from DER, 122' left of centerline, up to 100' AGL/279' MSL.

08 JAN 2015 to 05 FEB 2015

08 JAN 2015 to 05 FEB 2015

15008

# TAKEOFF MINIMUMS, (OBSTACLE) DEPARTURE PROCEDURES, AND DIVERSE VECTOR AREA (RADAR VECTORS)


**TAKEOFF MINIMUMS, (OBSTACLE) DEPARTURE PROCEDURES, AND  
DIVERSE VECTOR AREA (RADAR VECTORS)**


15008

**LA BELLE, FL****LA BELLE MUNI (X14)**
**TAKEOFF MINIMUMS AND (OBSTACLE)  
DEPARTURE PROCEDURES  
ORIG 08045 (FAA)**

NOTE: **Rwy 14**, vehicles on roadway, beginning 98' from DER, 483' left of centerline, up to 15' AGL/39' MSL. Trees beginning 70' from DER, 357' right of centerline, up to 100' AGL/124' MSL. Poles and trees beginning 305' from DER, 157' left of centerline, up to 40' AGL/94' MSL. Building 562' from DER, 238' left of centerline, 14' AGL/38' MSL. Poles and trees beginning 745' from DER, 93' right of centerline, up to 40' AGL/60' MSL. **Rwy 32**, airplanes on taxiway beginning 18' from DER, 130' left of centerline, up to 12' AGL/31' MSL. Trees beginning 35' from DER, 135' right of centerline, up to 100' AGL/119' MSL. Trees beginning 61' from DER, 6' left of centerline, up to 100' AGL/119' MSL. Vehicle on roadway beginning 136' from DER, 450' right of centerline, up to 15' AGL/34' MSL. Building 446' from DER, 214' right of centerline, 18' AGL/37' MSL. Pole 1578' from DER, 789' left of centerline, 43' AGL/62' MSL.

**LAKE CITY, FL****LAKE CITY GATEWAY (LCQ)**
**TAKEOFF MINIMUMS AND (OBSTACLE)  
DEPARTURE PROCEDURES  
AMDT 1 14149 (FAA)**

NOTE: **Rwy 5**, trees beginning 1358' from DER, 522' right of centerline, up to 100' AGL/294' MSL. **Rwy 10**, trees beginning 2490' from DER, 32' right of centerline, up to 94' AGL/284' MSL. Trees beginning 84' from DER, 58' left of centerline, up to 83' AGL/273' MSL. **Rwy 23**, trees beginning 575' from DER, 363' right of centerline, up to 100' AGL/285' MSL. Trees beginning 1139' from DER, 88' left of centerline, up to 100' AGL/285' MSL. **Rwy 28**, trees, pole and tower beginning 1001' from DER, 23' right of centerline, up to 158' AGL/350' MSL. Trees beginning 981' from DER, 4' left of centerline, up to 94' AGL/292' MSL.

**LAKE WALES, FL****LAKE WALES MUNI (X07)**
**TAKEOFF MINIMUMS AND (OBSTACLE)  
DEPARTURE PROCEDURES  
ORIG 08325 (FAA)**

NOTE: **Rwy 6**, trees beginning 1403' from DER, 165' left of centerline, up to 100' AGL/229' MSL. Trees beginning 2739' from DER, 899' right of centerline, up to 100' AGL/234' MSL. **Rwy 17**, trees beginning 534' from DER, 642' right of centerline, up to 100' AGL/224' MSL. **Rwy 24**, trees beginning 2462' from DER, 836' left of centerline, up to 100' AGL/224' MSL. **Rwy 35**, trees beginning 2567' from DER, 468' left of centerline, up to 100' AGL/234' MSL. Buildings beginning 691' from DER, 1' right of centerline up to 74' AGL/205' MSL.

**LAKELAND, FL****LAKELAND LINDER RGNL (LAL)**
**TAKEOFF MINIMUMS AND (OBSTACLE)  
DEPARTURE PROCEDURES  
AMDT 1 13262 (FAA)**

NOTE: **Rwy 5**, poles beginning 1099' from DER, 475' left of centerline, up to 33' AGL/175' MSL. Pole 1144' from DER, 746' right of centerline, 42' AGL/185' MSL. Trees beginning 1261' from DER, 427' left of centerline, up to 36' AGL/180' MSL. Trees beginning 720' from DER, 49' right of centerline, up to 47' AGL/191' MSL. **Rwy 9**, tree 2551' from DER, 582' left of centerline, 66' AGL/210' MSL. Trees beginning 2520' from DER, 259' right of centerline, up to 68' AGL/212' MSL.

**LEESBURG, FL****LEESBURG INTL (LEE)**
**TAKEOFF MINIMUMS AND (OBSTACLE)  
DEPARTURE PROCEDURES  
AMDT 4 11349 (FAA)**

TAKEOFF MINIMUMS: **Rwy 3**, 400-2 ¼ or std. w/ min. climb of 223' per NM to 500, or alternatively, with standard takeoff minimums and a normal 200' per NM climb gradient, takeoff must occur no later than 2100' prior to DER.

NOTE: **Rwy 3**, vehicles on roadway, 176' from DER, left and right of centerline, up to 15' AGL/90' MSL. Blast wall 78' from DER, on centerline, up to 10' AGL/85' MSL. Poles beginning 248' from DER, 372' right of centerline, up to 44' AGL/119' MSL. Trees beginning 61' from DER, 495' right of centerline, up to 67' AGL/137' MSL. Trees beginning 272' from DER, 386' left of centerline, up to 56' AGL/131' MSL. **Rwy 13**, trees beginning 493' from DER, 444' left of centerline, up to 43' AGL/106' MSL. **Rwy 21**, vehicles on roadway, 74' from DER, 389' left of centerline, up to 15' AGL/82' MSL. Trees beginning 775' from DER, 473' left of centerline, up to 100' AGL/179' MSL. Trees beginning 3614' from DER, 126' right of centerline, up to 113' AGL/173' MSL. **Rwy 31**, trees beginning 61' from DER, 401' left of centerline, up to 74' AGL/159' MSL. Trees beginning 531' from DER, 564' right of centerline, up to 100' AGL/173' MSL. Poles beginning 1273' from DER, 469' right of centerline, up to 60' AGL/131' MSL. Poles beginning 2893' from DER, 265' left of centerline, up to 74' AGL/159' MSL.

08 JAN 2015 to 05 FEB 2015

08 JAN 2015 to 05 FEB 2015

15008


**TAKEOFF MINIMUMS, (OBSTACLE) DEPARTURE PROCEDURES, AND  
DIVERSE VECTOR AREA (RADAR VECTORS)**


# TAKEOFF MINIMUMS, (OBSTACLE) DEPARTURE PROCEDURES, AND DIVERSE VECTOR AREA (RADAR VECTORS)

15008

**LIVE OAK, FL**

SUWANNEE COUNTY (24J)

TAKEOFF MINIMUMS AND (OBSTACLE)  
DEPARTURE PROCEDURES

ORIG 13346 (FAA)

DEPARTURE PROCEDURE: **Rwy 7**, Climb heading 074° to 600 before turning right.

NOTE: **Rwy 7**, REILS, fence and taxiway sign beginning 21' from DER, left and right of centerline, up to 5' AGL/106' MSL. Tree 53' from DER, 438' left of centerline, 50' AGL/152' MSL. Building and pole beginning 123' from DER, 448' left of centerline, up to 21' AGL/126' MSL. Trees beginning 189' from DER, 237' right of centerline, up to 18' AGL/106' MSL. Poles beginning 334' from DER, 484' left of centerline, up to 13' AGL/118' MSL. Trees beginning 420' from DER, 398' left of centerline, up to 71' AGL/173' MSL. Trees beginning 1041' from DER, 25' left of centerline, up to 66' AGL/179' MSL. Trees beginning 1340' from DER, 4' right of centerline, up to 61' AGL/170' MSL. Trees beginning 2643' from DER, 820' right of centerline, up to 70' AGL/179' MSL. **Rwy 25**, REILS beginning 20' from DER, left and right of centerline, 103' MSL. Trees and pole beginning 104' from DER, 230' left of centerline, up to 84' AGL/193' MSL. Tree 452' from DER, 489' right of centerline, 39' AGL/141' MSL. Trees beginning 1070' from DER, 445' right of centerline, up to 60' AGL/165' MSL. Trees beginning 1079' from DER, 416' left of centerline, up to 74' AGL/187' MSL. Trees beginning 1507' from DER, left and right of centerline, up to 83' AGL/195' MSL.

**MARATHON, FL**

THE FLORIDA KEYS MARATHON (MTH)

TAKEOFF MINIMUMS AND (OBSTACLE)  
DEPARTURE PROCEDURES

AMDT 1 07354 (FAA)

DEPARTURE PROCEDURE: **Rwy 7**, climbing right turn direct MTH NDB then via 307° bearing from MTH NDB to TIGAR Int before proceeding on course. **Rwy 25**, climb direct MTH NDB then via 307° bearing from MTH NDB to TIGAR Int before proceeding on course.

NOTE: **Rwy 7**, trees beginning 337' from DER, 324' right of centerline, up to 74' AGL/81' MSL, bush 166' from DER, 323' right of centerline, 9' AGL/16' MSL, pole 726' from DER, 589' right of centerline, 39' AGL/46' MSL, rod on obstruction light 1404' from DER, 655' right of centerline, 55' AGL/62' MSL, transmission pole 2360' from DER, 1029' right of centerline, 89' AGL/96' MSL, rod on obstruction light antenna 3366' from DER, 1010' right of centerline, 136' AGL/143' MSL, antenna 3270' from DER, 1253' right of centerline, 121' AGL/128' MSL, tower 3427' from DER, 1033' right of centerline, 115' AGL/121' MSL, trees beginning 242' from DER, 99' left of centerline, up to 75' AGL/82' MSL, antennas 1660' from DER, 371' left of centerline, up to 86' AGL/93' MSL, pole 876' from DER, 468' left of centerline, 39' AGL/46' MSL, concrete pole 1391' from DER, 534' left of centerline, 51' AGL/58' MSL. Pole 1441' from DER, 586' right of centerline, 55' AGL/62' MSL. **Rwy 25**, trees beginning 122' from DER, 224' right of centerline, up to 65' AGL/72' MSL, poles beginning 702' from DER, 470' right of centerline, up to 37' AGL/44' MSL, antenna 1752' from DER, 135' right of centerline, 49' AGL/56' MSL, trees beginning 223' from DER, 324' left of centerline, up to 66' AGL/73' MSL, rod on obstruction light antenna beginning 2353' from DER, 22' right of centerline, up to 138' AGL/145' MSL, antenna 2953' from DER, 745' left of centerline, 75' AGL/82' MSL, transmission pole 1545' from DER, 693' left of centerline, 60' AGL/67' MSL.

15008

# TAKEOFF MINIMUMS, (OBSTACLE) DEPARTURE PROCEDURES, AND DIVERSE VECTOR AREA (RADAR VECTORS)

**MARCO ISLAND, FL**

MARCO ISLAND (MKY)

TAKEOFF MINIMUMS AND (OBSTACLE)  
DEPARTURE PROCEDURES

AMDT 2 09351 (FAA)

DEPARTURE PROCEDURE: **Rwy 35**, climb heading 005° to 700 before turning west. **CAUTION:** Strobe light and unmarked balloon on cable to 14000' in R-2916, 78 NM south of Marco Island. **All aircraft** should establish positive course guidance to ensure avoidance of this obstacle.NOTE: **Rwy 17**, trees beginning 79' from DER, left and right of centerline, up to 48' AGL/52' MSL. Wind sock 76' from DER, 310' right of centerline, 21' AGL/25' MSL.**Rwy 35**, antenna 11' from DER, 384' left of centerline, 53' AGL/57' MSL. Sign 16' from DER, 255' left of centerline, 5' AGL/9' MSL. Trees beginning 64' from DER, left and right of centerline up to 51' AGL/55' MSL.**MARIANNA, FL**

MARIANNA MUNI (MAI)

TAKEOFF MINIMUMS AND (OBSTACLE)  
DEPARTURE PROCEDURES

ORIG 09071 (FAA)

TAKEOFF MINIMUMS: **Rwy 18**, 300-1½ or std. w/ min. climb of 222' per NM to 400.NOTE: **Rwy 8**, trees beginning 2518' from DER, 1016' right of centerline, up to 100' AGL/219' MSL. **Rwy 18**, trees beginning 57' from DER, 275' right of centerline, up to 100' AGL/279' MSL. Trees beginning 1241' from DER, 366' left of centerline, up to 100' AGL/209' MSL. **Rwy 26**, trees beginning 3180' from DER, 1278' right of centerline, up to 100' AGL/209' MSL. **Rwy 36**, trees beginning 2230' from DER, 1003' left of centerline, up to 100' AGL/209' MSL. Trees beginning 2352' from DER, 1007' right of centerline, up to 100' AGL/209' MSL.**MAYAGUEZ, PR**

EUGENIO MARIA DE HOSTOS (MAZ)

TAKEOFF MINIMUMS AND (OBSTACLE)  
DEPARTURE PROCEDURES

AMDT 3 92289 (FAA)

TAKEOFF MINIMUMS: **Rwy 9**, 1400-3 or std. with a min. climb of 500' per NM to 1400.DEPARTURE PROCEDURE: **Rwy 9**, climb via MAZ R-083 to 2500, aircraft northeast bound on G633 continue climb on course. All others turn left direct MAZ VOR/DME before proceeding on course. **Rwy 27**, climb via MAZ R-277 to 1500. Aircraft westbound on G633 continue climb on course. All others climbing right turn direct MAZ VOR/DME so as to cross at or above MEA for direction of flight.**MAYPORT NS (ADM DAVID L. MC DONALD  
FLD)(KNRB)**

MAYPORT, FL

TAKEOFF MINIMUMS AND (OBSTACLE)  
DEPARTURE PROCEDURES

08073

TAKEOFF OBSTACLES: **Rwy 5**, Vessels with masts to 150' MSL, 500' to 2900' from DER. **Rwy 23**, Vessels with masts to 150' MSL, 1600' right of rwy centerline to 4000' from DER.

08 JAN 2015 to 05 FEB 2015

08 JAN 2015 to 05 FEB 2015


**TAKEOFF MINIMUMS, (OBSTACLE) DEPARTURE PROCEDURES, AND**

  
**DIVERSE VECTOR AREA (RADAR VECTORS)**

15008

**MELBOURNE, FL**

MELBOURNE INTL (MLB)  
 TAKEOFF MINIMUMS AND (OBSTACLE)  
 DEPARTURE PROCEDURES

NOTE: **Rwy 5**, multiple trees 1584' from DER, 222' left of centerline, up to 43' AGL/64' MSL. **Rwy 9L**, tree 108' from DER, 479' left of centerline, 25' AGL/62' MSL. **Rwy 9R**, multiple trees 1855' from DER, 434' left of centerline, up to 43' AGL/73' MSL. Tree 1332' from DER, 434' right of centerline, 36' AGL/56' MSL. **Rwy 23**, bush 20' from DER, 217' right of centerline, 8' AGL/33' MSL, tower 6034' from DER, 750' right of centerline, 152' AGL/177' MSL. Multiple trees beginning 284' from DER, 121' left of centerline, up to 47' AGL/72' MSL. **Rwy 27R**, multiple trees beginning 543' from DER, 169' left of centerline, up to 51' AGL/81' MSL. Multiple trees beginning 1202' from DER, 114' right of centerline, up to 58' AGL/88' MSL.

**MERRITT ISLAND, FL**

MERRITT ISLAND (COI)  
 TAKEOFF MINIMUMS AND (OBSTACLE)  
 DEPARTURE PROCEDURES  
 ORIG 06103 (FAA)

NOTE: **Rwy 29**, rod on airport beacon obstruction light, 138' from DER, 514' right of centerline, 61' AGL/67' MSL; pole, 82' from DER, 403' left of centerline, 34' AGL/40' MSL; pole, 468' from DER, 508' right of centerline, 37' AGL/43' MSL; hangar, 221' from DER, 278' right of centerline, 22' AGL/28' MSL; pole 490' from DER, 306' left of centerline, 28' AGL/34' MSL; tree, 987' from DER, 476' left of centerline, 40' AGL/46' MSL; tree 1287' from DER, 432' left of centerline, 47' AGL/53' MSL; tree 1415' from DER, 560' left of centerline, 48' AGL/54' MSL; building, 556' from DER, 530' right of centerline, 25' AGL/31' MSL; tree, 1654' from DER, 464' right of centerline, 48' AGL/54' MSL; obstruction light on windsock, 551' from DER, 234' right of centerline, 19' AGL/25' MSL; pole, 1306' from DER, 259' right of centerline, 37' AGL/43' MSL; building, 429' from DER, 436' right of centerline, 15' AGL/21' MSL; tree, 1953' from DER, 524' left of centerline, 49' AGL/55' MSL.

**MIAMI, FL**

KENDALL-TAMIAMI EXECUTIVE (TMB)  
 TAKEOFF MINIMUMS AND (OBSTACLE)  
 DEPARTURE PROCEDURES  
 AMDT 8 09295 (FAA)

DEPARTURE PROCEDURE: **Rwy 9L**, climb heading 093° to 800 before turning right. **Rwy 9R**, climb heading 093° to 900 before turning right. **Rwy 13**, climb heading 133° to 1400 before turning right. **Rwy 27L**, climb heading 273° to 1400 before turning left. **Rwy 27R**, climb heading 273° to 1300 before turning left. **Rwy 31**, climb heading 313° to 900 before turning left.

NOTE: **Rwy 9L**, trees beginning 1731' from DER, 717' left of centerline, up to 100' AGL/119' MSL. Tree 3013' from DER, 687' right of centerline, 100' AGL/119' MSL. **Rwy 9R**, signs beginning 35' from DER, 182' left of centerline, up to 3' AGL/11' MSL. Trees beginning 1296' from DER, 516' left of centerline, up to 100' AGL/119' MSL. Tree 2712' from DER, 1185' right of centerline, 100' AGL/119' MSL. **Rwy 13**, tree 1100' from DER, 764' right of centerline, 100' AGL/119' MSL. Pole 1249' from DER, 588' right of centerline, 56' AGL/70' MSL. **Rwy 27L**, transmission towers beginning 1858' from DER, 910' left of centerline, up to 72' AGL/82' MSL. Tree 2106' from DER, 998' right of centerline, 100' AGL/119' MSL. **Rwy 27R**, trees beginning 149' from DER, 352' right of centerline, up to 100' AGL/119' MSL. Obstruction light on tower 372' from DER, 458' right of centerline, 54' AGL/64' MSL. Obstruction light antenna 385' from DER, 450' right of centerline, 49' AGL/59' MSL. **Rwy 31**, trees beginning 163' from DER, 410' left of centerline, up to 100' AGL/119' MSL. Tree 3583' from DER, 360' right of centerline, 100' AGL/119' MSL.

08 JAN 2015 to 05 FEB 2015

08 JAN 2015 to 05 FEB 2015

15008


**TAKEOFF MINIMUMS, (OBSTACLE) DEPARTURE PROCEDURES, AND**

  
**DIVERSE VECTOR AREA (RADAR VECTORS)**

# TAKEOFF MINIMUMS, (OBSTACLE) DEPARTURE PROCEDURES, AND DIVERSE VECTOR AREA (RADAR VECTORS)

15008

## MIAMI, FL (CON'T)

### MIAMI INTL (MIA)

#### TAKEOFF MINIMUMS AND (OBSTACLE) DEPARTURE PROCEDURES

AMDT 17A 12124 (FAA)

TAKEOFF MINIMUMS: **Rwy 8L**, 300-1¼ or std. w/ min. climb of 382' per NM to 300. **Rwy 9**, std. w/ min. climb of 240' per NM to 1200.

DEPARTURE PROCEDURE: **Rwys 8L,8R**, climb heading 092° to 1000 before turning right. **Rwy 12**, climbing right turn to intercept DHP VORTAC R-125 to 1100 before turning left. **Rwys 26L,26R**, climb heading 272° to 600 before turning left. **Rwy 27**, climb heading 272° to 600 before turning right.

NOTE: **Rwy 8L**, multiple buildings with antennas and towers beginning 1350' from DER, 690' left of centerline, up to 160' AGL/172' MSL. **Rwy 8R**, tree 4064' from DER, 958' right of centerline, 93' AGL/112' MSL. Multiple power lines, antennas and trees beginning 1856' from DER, 238' left of centerline, up to 150' AGL/153' MSL. Navaid and rod on obstruction light GS 804' from DER, 500' right of centerline, 46' MSL. **Rwy 9**, light windsock 21' from DER, 437' right of centerline, 21' AGL/30' MSL. Pole 702' from DER, 600' right of centerline, 21' AGL/38' MSL. Antenna 4035' from DER, 1528' right of centerline, 108' AGL/125' MSL. Electrical system 1231' from DER, 785' left of centerline 32' AGL/48' MSL. **Rwy 12**, train 3' from DER, 436' right of runway, 23' AGL/51' MSL. Antenna 2917' from DER, 1140' right of centerline, 89' AGL/106' MSL. Antenna on building 3164' from DER, 992' right of centerline, 91' AGL/108' MSL. Trees beginning 114' from DER, 117' right of centerline, up to 20' AGL/37' MSL. Sign 1191' from DER, 438' right of centerline, 32' AGL/49' MSL. Windsock 680' from DER, 345' left of centerline, 16' AGL/30' MSL. **Rwy 26L**, pole 1080' from DER, 680' left of centerline, 33' AGL/47' MSL. Light pole 1773' from DER, 825' left of centerline, 34' AGL/53' MSL. Tree 1405' from DER, 848' left of centerline 30' AGL/44' MSL. Rod on tower 1305' from DER, 638' right of centerline, 34' AGL/48' MSL. Tree 2459' from DER, 1070' right of centerline, 63' AGL/71' MSL. **Rwy 26R**, numerous poles beginning 1090' from DER, 36' right of centerline, up to 44' AGL/59' MSL. Building 740' from DER, 511' right of centerline, 14' AGL/28' MSL. Trees beginning 1047' from DER, 272' right of centerline, up to 66' AGL/80' MSL. Tree 888' from DER, on centerline, 21' AGL/35' MSL. Rod on tower 1304' from DER, 160' left of centerline, 34' AGL/48' MSL. **Rwy 27**, train on tracks 750' from DER, 576' left of centerline 23' AGL/53' MSL. Tree 1067' from DER, 680' left of centerline 23' AGL/37' MSL. Roadway beginning 1874' from DER, 502' left of centerline up to 71' AGL/85' MSL. Numerous poles and signs beginning 1876' from DER, 93' left of centerline up to 63' AGL/77' MSL. Poles beginning 2056' from DER, 95' right of centerline up to 46' AGL/60' MSL. **Rwy 30**, pole 560' from DER, 563' left of centerline, 33' AGL/47' MSL. Rod on tower 2451' from DER, 434' right of centerline, 34' AGL/48' MSL. Antenna on tower 1733' from DER, 911' right of centerline, 41' AGL/55' MSL. Antenna on tower 4427' from DER, 1451' right of centerline, 109' AGL/123' MSL. Trees beginning 2658' from DER, 188' right of centerline, up to 63' AGL/77' MSL.

## MIAMI, FL (CON'T)

### OPA-LOCKA EXECUTIVE (OPF)

#### TAKEOFF MINIMUMS AND (OBSTACLE) DEPARTURE PROCEDURES

AMDT 9 11349 (FAA)

DEPARTURE PROCEDURE: **Rwy 9L**, climb heading 093° to 1100 before turning north. **Rwy 9R**, climb heading 093° to 1000 before turning north. **Rwy 12**, climb heading 128° to 600 before turning north.

**Rwy 27R**, climb heading 273° to 500 before turning north.

NOTE: **Rwy 9L**, fence 48' from DER, 498' left of centerline, 10' AGL/17' MSL. Utility line 57' from DER, 505' left of centerline, 9' AGL/16' MSL. Airport sign 40' from DER, 311' right of centerline, 2' AGL/9' MSL. Tree 103' from DER, 481' left of centerline, 9' AGL/16' MSL. Trees beginning 1632' from DER, 657' left of centerline, up to 43' AGL/57' MSL. Trees beginning 3215' from DER, 885' right of centerline, up to 81' AGL/95' MSL. **Rwy 9R**, airfield light 6' from DER, 59' right of centerline, 1' AGL/7' MSL. Light pole 1439' from DER, 739' right of centerline, 38' AGL/45' MSL. Pole 1436' from DER, 735' right of centerline, 40' AGL/47' MSL. Pole 1581' from DER, 892' left of centerline, 40' AGL/47' MSL. Tree 11' from DER, 502' right of centerline, 8' AGL/15' MSL. Trees beginning 1590' from DER, 511' left of centerline, up to 109' AGL/116' MSL. Trees beginning 1577' from DER, 243' right of centerline, up to 57' AGL/64' MSL.

**Rwy 12**, REIL 3' from DER, 118' left of centerline 1' AGL/9' MSL. REIL 3' from DER, 118' right of centerline, 1' AGL/9' MSL. Poles 1560' from DER, 268' right of centerline, 40' AGL/48' MSL. Pole 461' from DER, 609' right of centerline, 31' AGL/39' MSL. Trees beginning 1080' from DER, 118' right of centerline, up to 62' AGL/70' MSL. Trees beginning 1051' from DER, 93' left of centerline, up to 56' AGL/64' MSL. **Rwy 27L**, fence 194' from DER, 483' right of centerline, 10' AGL/16' MSL. Poles beginning 336' from DER, 94' left and 530' right of centerline, up to 67' AGL/73' MSL. Trees beginning 1056' from DER, 756' left of centerline, up to 37' AGL/43' MSL. Building 1106' from DER, 739' right of centerline, 36' AGL/42' MSL. **Rwy 27R**, airport sign 38' from DER, 310' left of centerline, 1' AGL/8' MSL. Antenna on building 1568' from DER, 756' left of centerline, 44' AGL/51' MSL. Trees beginning 165' from DER, 45' left of centerline, up to 115' AGL/122' MSL. Trees beginning 1059' from DER, 229' right of centerline, up to 107' AGL/114' MSL. **Rwy 30**, airport sign 40' from DER, 233' right of centerline, 1' AGL/9' MSL. Tower 2543' from DER, 565' right of centerline, 76' AGL/84' MSL. Antenna on building 2526' from DER, 572' right of centerline, 74' AGL/82' MSL. Tower 3760' from DER, 969' right of centerline, 100' AGL/105' MSL. Trees beginning 1312' from DER, 590' left of centerline, up to 43' AGL/51' MSL. Trees beginning 1711' from DER, 614' right of centerline, up to 78' AGL/86' MSL.

08 JAN 2015 to 05 FEB 2015

08 JAN 2015 to 05 FEB 2015

15008

# TAKEOFF MINIMUMS, (OBSTACLE) DEPARTURE PROCEDURES, AND DIVERSE VECTOR AREA (RADAR VECTORS)


**TAKEOFF MINIMUMS, (OBSTACLE) DEPARTURE PROCEDURES, AND**

  
**DIVERSE VECTOR AREA (RADAR VECTORS)**

15008

**MILTON, FL****PETER PRINCE FIELD (2R4)**
**TAKEOFF MINIMUMS AND (OBSTACLE)  
DEPARTURE PROCEDURES  
ORIG-A 10182 (FAA)**

NOTE: **Rwy 18**, trees beginning 102' from DER, 51' left of centerline, up to 93' AGL/163' MSL. Trees beginning 1014' from DER, 13' right of centerline, up to 83' AGL/153' MSL. Pole 711' from DER, 164' left of centerline, 40' AGL/106' MSL. Poles beginning 766' from DER, 68' right of centerline, 40' AGL/109' MSL. Railroad 572' from end of runway, 23' AGL/110' MSL. Road 549' from DER, 17' AGL/94' MSL. **Rwy 36**, trees beginning 27' from DER, 329' left of centerline up to 45' AGL/101' MSL. Trees beginning 40' from DER, 98' right of centerline, up to 30' AGL/90' MSL.

**NAPLES, FL****NAPLES MUNI (APF)**
**TAKEOFF MINIMUMS AND (OBSTACLE)  
DEPARTURE PROCEDURES  
AMDT 2 09351 (FAA)**

DEPARTURE PROCEDURE: **Rwy 14**, climb heading 137° to 600 before turning left.

NOTE: **Rwy 5**, trees beginning 92' from DER, left and right of centerline, up to 82' AGL/92' MSL. Tanks 1308' from DER, 293' left of centerline, up to 34' AGL/44' MSL. **Rwy 14**, trees beginning 97' from DER, left and right of centerline, up to 101' AGL/108' MSL. **Rwy 23**, trees beginning 126' from DER, left and right of centerline, up to 66' AGL/70' MSL. **Rwy 32**, trees beginning 339' from DER, left and right of centerline, up to 119' AGL/123' MSL.

**NEW SMYRNA BEACH, FL****NEW SMYRNA BEACH MUNI (EVB)**
**TAKEOFF MINIMUMS AND (OBSTACLE)  
DEPARTURE PROCEDURES  
AMDT 2 11013 (FAA)**

NOTE: **Rwy 2**, tree 1816' from DER, 584' right of centerline, 48' AGL/56' MSL. Numerous trees beginning 455' from DER, 232' left of centerline, up to 84' AGL/93' MSL. Pole 1470' from DER, 22' left of centerline, 41' AGL/49' MSL. **Rwy 7**, trees beginning 345' from DER, 214' right of centerline, up to 40' AGL/48' MSL. Transmission tower 347' from DER, 553' right of centerline, 43' AGL/51' MSL. Transmission tower 890' from DER, 151' right of centerline, 50' AGL/58' MSL. Vehicle on road 209' from DER, 20' right of centerline, 17' AGL/43' MSL. Trees beginning 311' from DER, 214' left of centerline, up to 41' AGL/49' MSL. Numerous transmission towers beginning 915' from DER, 149' left of centerline up to 53' AGL/61' MSL. Pole 1972' from DER, 144' left of centerline, 42' AGL/60' MSL. **Rwy 11**, trees beginning 1273' from DER, 350' right of centerline, up to 55' AGL/62' MSL. Trees beginning 508' from DER, 395' left of centerline, up to 55' AGL/62' MSL. Pole 556' from DER, 401' left of centerline, 42' AGL/50' MSL. Vehicle on road 408' from DER, 400' left of centerline, 17' AGL/44' MSL. **Rwy 20**, trees beginning 542' from DER, 187' right of centerline, up to 66' AGL/80' MSL. Train 410' from DER, 71' right of centerline, 23' AGL/ 61' MSL. Vehicle on road 316' from DER, 89' right of centerline, 17' AGL/44' MSL. Pole 479' from DER, 307' right of centerline, 18' AGL/32' MSL. Trees beginning 359' from DER, 27' left of centerline, up to 64' AGL/81' MSL. **Rwy 25**, trees beginning 300' from DER, 120' right of centerline, up to 73' AGL/96' MSL. Pole 265' from DER, 388' right of centerline, 24' AGL/44' MSL. Trees beginning 432' from DER, 104' left of centerline, up to 76' AGL/100' MSL. Flag pole 200' from DER, 250' left of centerline, 17' AGL/37' MSL. **Rwy 29**, trees beginning 1289' from DER, 317' right of centerline, up to 73' AGL/86' MSL. Trees beginning 4' from DER, 172' left of centerline, up to 87' AGL/100' MSL.

**MASSEY RANCH AIRPARK (X50)**
**TAKEOFF MINIMUMS AND (OBSTACLE)  
DEPARTURE PROCEDURES  
ORIG 09323 (FAA)**

NOTE: **Rwy 18**, trees beginning 132' from DER, left and right of centerline, up to 70' AGL/84' MSL. Vehicles on road beginning 23' from DER, left and right of centerline, up to 15' AGL/29' MSL. Power line, 2358' from DER, right and left of centerline, up to 100' AGL/109' MSL. **Rwy 36**, trees beginning 300' from DER, left and right of centerline, up to 70' AGL/84' MSL. Vehicles on road beginning 23' from DER, 156' right of centerline, up to 15' AGL/29' MSL. Building 962' from DER, 167' right of centerline, 33' AGL/45' MSL. Tower 5101' from DER, 401' right of centerline, 152' AGL/162' MSL.

08 JAN 2015 to 05 FEB 2015

08 JAN 2015 to 05 FEB 2015

15008


**TAKEOFF MINIMUMS, (OBSTACLE) DEPARTURE PROCEDURES, AND**

  
**DIVERSE VECTOR AREA (RADAR VECTORS)**



# TAKEOFF MINIMUMS, (OBSTACLE) DEPARTURE PROCEDURES, AND DIVERSE VECTOR AREA (RADAR VECTORS)

15008

## OCALA, FL

OCALA INTL-JIM TAYLOR FLD (OCF)

TAKEOFF MINIMUMS AND (OBSTACLE)

DEPARTURE PROCEDURES

ORIG 09015 (FAA)

DEPARTURE PROCEDURE: **Rwy 8**, climb heading 069° to 500 before proceeding on course.

NOTE: **Rwy 18**, trees beginning 316' from DER, 527' right of centerline, up to 30' AGL/106' MSL. **Rwy 26**, trees beginning 83' from DER, 255' left of centerline, up to 100' AGL/204' MSL. Trees beginning 272' from DER, 10' right of centerline, up to 100' AGL/194' MSL. **Rwy 36**, taxiing aircraft, 43' from DER, 305' right of centerline, up to 10' AGL/94' MSL. Trees beginning 196' from DER, 500' left of centerline, up to 70' AGL/164' MSL. Trees beginning 2668' from DER, 305' right of centerline, up to 70' AGL/162' MSL.

## ORLANDO, FL

EXECUTIVE (ORL)

TAKEOFF MINIMUMS AND (OBSTACLE)

DEPARTURE PROCEDURES

AMDT 4 12320 (FAA)

DEPARTURE PROCEDURE: **Rwy 25**, climb heading 253° to 700 before turning right. **Rwy 31**, climb heading 317° to 600 before turning left.

NOTE: **Rwy 7**, trees beginning 189' from DER, 542' right of centerline, up to 114' AGL/132' MSL. Tree 882' from DER, 709' left of centerline, 44' AGL/143' MSL. **Rwy 25**, trees beginning 1314' from DER, 597' right of centerline, up to 119' AGL/191' MSL. **Rwy 13**, numerous roads, poles, towers, signs, trees and buildings left and right of centerline, beginning 300' from DER, 481' right of centerline, up to 119' AGL/173' MSL. **Rwy 31**, building 2.1 NM from DER, 5569' left of centerline, 435' AGL/524' MSL. Numerous trees, poles, towers, antennas and buildings left and right of centerline, beginning 613' from DER, 442' left of centerline, up to 126' AGL/189' MSL.

## KISSIMMEE GATEWAY (ISM)

TAKEOFF MINIMUMS AND (OBSTACLE)

DEPARTURE PROCEDURES

TAKEOFF MINIMUMS: **Rwy 6**, 300-1.

## ORLANDO INTL (MCO)

TAKEOFF MINIMUMS AND (OBSTACLE)

DEPARTURE PROCEDURES

AMDT 2 12208 (FAA)

NOTE: **Rwy 17L**, Trees beginning 1072' from DER, 123' left of centerline, up to 67' AGL/151' MSL. **Rwy 17R**, Trees 1783' from DER, 964' right of centerline, up to 64' AGL/138' MSL. **Rwy 35L**, Electrical system and bushes beginning 133' from DER, 455' left of centerline, up to 43' AGL/129' MSL. **Rwy 35R**, Trees beginning 2707' from DER, 54' left of centerline, up to 81' AGL/170' MSL. Trees beginning 2163' from DER, 607' right of centerline, up to 95' AGL/184' MSL. **Rwy 36L**, Light on sign 1063' from DER, 775' right of centerline, 34' AGL/123' MSL. **Rwy 36R**, Light on sign 1063' from DER, 725' left of centerline, 34' AGL/123' MSL. Trees beginning 1364' from DER, 193' right of centerline, up to 64' AGL/153' MSL.

## ORLANDO, FL (CON'T)

ORLANDO SANFORD INTL (SFB)

TAKEOFF MINIMUMS AND (OBSTACLE)

DEPARTURE PROCEDURES

AMDT 10 13122 (FAA)

DEPARTURE PROCEDURE: **Rwy 27L**, climb heading 275° to 800 before proceeding northbound. **Rwy 27C**, climb heading 275° to 900 before proceeding northbound. **Rwy 27R**, climb heading 275° to 900 before proceeding northbound. **Rwy 36**, climb heading 005° to 2000 before proceeding on course.

NOTE: **Rwy 9R**, pole at DER, 277' left of centerline, 7' AGL/25' MSL. Utilities beginning 430' from DER, 206' left of centerline, up to 39' AGL/55' MSL. Utilities beginning 430' from DER, 109' right of centerline, up to 39' AGL/55' MSL. Trees beginning 986' from DER, 13' left of centerline, up to 52' AGL/83' MSL. Trees beginning 1078' from DER, 463' right of centerline, up to 66' AGL/80' MSL. **Rwy 9C**, vehicles on roadway beginning 22' from DER, left and right of centerline, up to 15' AGL/62' MSL. Bush 163' from DER, 276' left of centerline, 9' AGL/57' MSL. Pole 1079' from DER, 314' right of centerline, 36' AGL/78' MSL. Trees beginning 1130' from DER, 90' right of centerline, up to 82' AGL/112' MSL. **Rwy 27R**, antenna on building 131' from DER, 441' right of centerline, 18' AGL/67' MSL. Poles and trees beginning 1157' from DER, 146' left of centerline, up to 65' AGL/120' MSL. Trees beginning 1395' from DER, 66' right of centerline, up to 67' AGL/116' MSL. **Rwy 27C**, buildings beginning 1548' from DER, 336' left of centerline, up to 47' AGL/101' MSL. Trees beginning 1753' from DER, 295' right of centerline, up to 76' AGL/105' MSL. Towers and antenna beginning 2340' from DER, 544' left of centerline, up to 135' AGL/194' MSL. **Rwy 27L**, approach lights beginning 32' from DER, on centerline, up to 17' AGL/56' MSL. Fence 229' from DER, 16' right of centerline, 12' AGL/51' MSL. Vehicles on roadway beginning 359' from DER, left and right of centerline, up to 15' AGL/60' MSL. Trees beginning 865' from DER, 574' left of centerline, up to 50' AGL/94' MSL. Pole 1006' from DER, 692' right of centerline, 43' AGL/86' MSL. Trees beginning 2733' from DER, left and right of centerline, up to 91' AGL/135' MSL. **Rwy 18**, poles beginning 945' from DER, 482' left of centerline, up to 44' AGL/71' MSL. Trees beginning 997' from DER, 280' left of centerline, up to 63' AGL/93' MSL. Trees beginning 1277' from DER, 621' right of centerline, up to 83' AGL/112' MSL. **Rwy 36**, trees beginning 330' from DER, 508' right of centerline, up to 43' AGL/77' MSL. Trees beginning 1104' from DER, 617' left of centerline, up to 85' AGL/114' MSL.

## ORMOND BEACH, FL

ORMOND BEACH MUNI (OMN)

TAKEOFF MINIMUMS AND (OBSTACLE)

DEPARTURE PROCEDURES

ORIG 09211 (FAA)

NOTE: **Rwy 8**, trees beginning 8' from DER, left and right of centerline, up to 100' AGL/124' MSL. **Rwy 26**, trees beginning 20' from DER, left and right of centerline, up to 100' AGL/129' MSL. **Rwy 17**, trees beginning 23' from DER, left and right of centerline, up to 100' AGL/129' MSL. Power poles beginning 540' from DER, 589' right of centerline, up to 36' AGL/60' MSL. Building 640' from DER, 660' right of centerline, 21' AGL/45' MSL. **Rwy 35**, trees beginning 208' from DER, left and right of centerline, up to 100' AGL/129' MSL. Light poles beginning 1231' from DER, 571' left of centerline, up to 70' AGL/99' MSL.

15008

# TAKEOFF MINIMUMS, (OBSTACLE) DEPARTURE PROCEDURES, AND DIVERSE VECTOR AREA (RADAR VECTORS)

# TAKEOFF MINIMUMS, (OBSTACLE) DEPARTURE PROCEDURES, AND DIVERSE VECTOR AREA (RADAR VECTORS)

15008

## PALATKA, FL

PALATKA MUNI-LT KAY LARKIN FIELD

(28J)

TAKEOFF MINIMUMS AND (OBSTACLE)  
DEPARTURE PROCEDURES

ORIG-A 13262 (FAA)

TAKEOFF MINIMUMS: **Rwy 9**, 200-1¼ or std. w/ min. climb of 207' per NM to 300, or alternatively, with standard TAKEOFF minimums and a normal 200'/NM climb gradient, TAKEOFF must occur no later than 1300' prior to DER.

NOTE: **Rwy 9**, trees beginning 558' from DER, 39' right of centerline, up to 100' AGL/105' MSL. Trees beginning 625' from DER, 7' left of centerline, up to 100' AGL/137' MSL. Tower 1.1 NM from DER, 1398' right of centerline, 164' AGL/199' MSL. **Rwy 17**, trees beginning 237' from DER, 100' right of centerline, up to 100' AGL/164' MSL. Trees beginning 796' from DER, 478' left of centerline, up to 100' AGL/169' MSL.

**Rwy 27**, trees beginning 15' from DER, 56' left of centerline, up to 78' AGL/112' MSL. Trees beginning 49' from DER, 269' right of centerline, up to 72' AGL/101' MSL. **Rwy 35**, buildings beginning 504' from DER, 403' right of centerline, up to 75' AGL/104' MSL. Trees beginning 788' from DER, 222' left of centerline, up to 100' AGL/129' MSL. Trees beginning 1387' from DER, 81' right of centerline, up to 100' AGL/119' MSL. Buildings beginning 1454' from DER, 850' left of centerline, up to 75' AGL/104' MSL.

## PALM COAST, FL

FLAGLER COUNTY (FIN)

TAKEOFF MINIMUMS AND (OBSTACLE)  
DEPARTURE PROCEDURES

AMDT 1 14317 (FAA)

DEPARTURE PROCEDURE: **Rwy 24**, climb heading 241° to 700 before turning right. **Rwy 29**, climb heading 280° to 1600 before turning.

NOTE: **Rwy 6**, trees beginning 705' from DER, 80' right of centerline, up to 36' AGL/61' MSL. Tree 767' from DER, 43' left of centerline, 34' AGL/159' MSL. Tree 1258' from DER, 99' left of centerline, 56' AGL/81' MSL. Tree 1537' from DER, 31' right of centerline, 59' AGL/84' MSL. Trees beginning 1796' from DER, 363' left of centerline, up to 82' AGL/107' MSL. Tree 1905' from DER, 192' right of centerline, 63' AGL/88' MSL. Trees beginning 2578' from DER, 442' right of centerline, up to 83' AGL/108' MSL. Tree 3253' from DER, 564' left of centerline, 83' AGL/115' MSL.

**Rwy 11**, tree 59' from DER, 274' right of centerline, 42' AGL/67' MSL. Tree 736' from DER, 281' right of centerline, 54' AGL/29' MSL. Tree 1596' from DER, 392' right of centerline, 82' AGL/57' MSL. Tree 1958' from DER, 47' right of centerline, 69' AGL/94' MSL. Trees beginning 1977' from DER, 63' left of centerline, up to 76' AGL/101' MSL. Trees beginning 2550' from DER, 441' right of centerline, up to 90' AGL/110' MSL.

**Rwy 24**, tree 142' from DER, 441' right of centerline, 63' AGL/88' MSL. Tree 1314' from DER, 839' left of centerline, 86' AGL/111' MSL. **Rwy 29**, tree 31' from DER, 275' left of centerline, 59' AGL/84' MSL. Tree 415' from DER, 585' right of centerline, 57' AGL/82' MSL. Trees beginning 1195' from DER, 774' left of centerline, up to 90' AGL/110' MSL. Trees beginning 1289' from DER, 308' right of centerline, up to 86' AGL/111' MSL. Trees beginning 1538' from DER, 523' left of centerline, up to 89' AGL/109' MSL. Tree 1831' from DER, 48' right of centerline, 61' AGL/86' MSL.

## PAHOKEE, FL

PALM BEACH COUNTY GLADES (PHK)

TAKEOFF MINIMUMS AND (OBSTACLE)  
DEPARTURE PROCEDURES

AMDT 1 02220 (FAA)

NOTE: **Rwy 17**, tower 1600' from DER, 690' left of centerline, 127' AGL/143' MSL.

## PANAMA CITY, FL

NORTHWEST FLORIDA BEACHES INTL

(ECP)

TAKEOFF MINIMUMS AND (OBSTACLE)  
DEPARTURE PROCEDURES

AMDT 1 10322 (FAA)

TAKEOFF MINIMUMS: **Rwys 3, 21**, NA-Environmental. NOTE: **Rwy 16**, trees beginning 2644' from DER, 382' right of centerline, up to 82' AGL/131' MSL.

## PATRICK AFB (KCOF)

COCOA BEACH, FL

TAKEOFF MINIMUMS AND (OBSTACLE)  
DEPARTURE PROCEDURES

AMDT 1, 14289

DEPARTURE PROCEDURE: **Rwy 2**, Diverse departure authorized. **Rwy 11**, Diverse departure authorized. **Rwy 20**, Diverse departure authorized. **Rwy 29**, Diverse departure authorized.

TAKE-OFF OBSTACLES: **Rwy 2**, antenna 3074' from DER, 1290' left of centerline, 84' MSL. Trees 2816' from DER, 1136' left of centerline, 75' AGL/79' MSL. Trees 1901' from DER, 994' left of centerline, 50' AGL/56' MSL. Trees 2749' from DER, 731' left of centerline, 70' AGL/76' MSL. Terrain 16' from DER, 500' left of centerline, 16' MSL. Terrain 46' from DER, 512' left of centerline, 16' MSL. Flag pole 3334' from DER, 1273' left of centerline, 76' MSL. Road and truck 756' from DER, 574' right of centerline, 28' MSL. Road and truck 756' from DER, 574' right of centerline, 12' AGL/28' MSL. Road and truck 735' from DER, 620' right of centerline, 25' MSL. Trees 2881' from DER, 1254' left of centerline, 75' AGL/80' MSL. **Rwy 11**, road and truck 621' from DER, 212' left of centerline, 0' AGL/29' MSL. Road and truck 512' from DER, 437' left of centerline, 0' AGL/29' MSL. Road and truck 1031' from DER, 664' right of centerline, 0' AGL/29' MSL. Road and truck 832' from DER, 240' right of centerline, 0' AGL/29' MSL. Road and truck 666' from DER, 91' right of centerline, 0' AGL/37' MSL. Terrain 26' from DER, 13' right of centerline, 16' MSL. Terrain at DER, 500' left of centerline, 16' MSL. Road and truck 640' from DER, 90' right of centerline, 0' AGL/26' MSL. **Rwy 20**, sailboat mast 1787' from DER, 984' right of centerline, 43' MSL. Terrain at DER, 500' left of centerline, 20' MSL. Terrain 14' from DER, 302' left of centerline, 20' MSL. Terrain 127' from DER, 534' right of centerline, 17' MSL. **Rwy 29**, fiber optic 299' from DER, 107' right of centerline, 0' AGL/9' MSL. Road and truck 352' from DER, 11' right of centerline, 0' AGL/20' MSL. Road and truck 418' from DER, 162' right of centerline, 0' AGL/18' MSL. Road and truck 444' from DER, 310' right of centerline, 0' AGL/9' MSL. Terrain at DER, 500' left of centerline, 13' MSL. Terrain 95' from DER, 326' left of centerline, 13' MSL. Terrain at DER, 25' right of centerline, 16' MSL. Patrol boat 362' from DER, 476' left of centerline, 0' AGL/10' MSL. Bird cannon 98' from DER, 455' right of centerline, 0' AGL/8' MSL. Fiber optic 177' from DER, 133' left of centerline, 0' AGL/10' MSL. Shrubs 389' from DER, 350' left of centerline, 45' MSL.

08 JAN 2015 to 05 FEB 2015

08 JAN 2015 to 05 FEB 2015

15008

# TAKEOFF MINIMUMS, (OBSTACLE) DEPARTURE PROCEDURES, AND DIVERSE VECTOR AREA (RADAR VECTORS)


**TAKEOFF MINIMUMS, (OBSTACLE) DEPARTURE PROCEDURES, AND**

  
**DIVERSE VECTOR AREA (RADAR VECTORS)**

15008

**PENSACOLA, FL****PENSACOLA INTL (PNS)****TAKEOFF MINIMUMS AND (OBSTACLE)  
DEPARTURE PROCEDURES**

AMDT 1 12208 (FAA)

DEPARTURE PROCEDURE: **Rwy 26**, climb heading 260° to 600 before turning south.NOTE: **Rwy 26**, trees beginning 84' from DER, left and right of centerline, up to 100' AGL/146' MSL. Rod 398' from DER, 596' left of centerline, 56' AGL/132' MSL.**Rwy 35**, trees beginning 490' from DER, left and right of centerline, up to 100' AGL/182' MSL.**PERRY, FL****PERRY-FOLEY (40J)****TAKEOFF MINIMUMS AND (OBSTACLE)  
DEPARTURE PROCEDURES**

AMDT 1 14317 (FAA)

DEPARTURE PROCEDURE: **Rwy 6**, climb heading 063° to 500 before turning left. **Rwy 36**, climb heading 350° to 600 before turning right.NOTE: **Rwy 6**, trees beginning 850' from DER, 386' left of centerline, up to 100' AGL/144' MSL. Trees beginning 1575' from DER, 636' right of centerline, up to 100' AGL/144' MSL. Trees beginning 2109' from DER, left and right of centerline, up to 100' AGL/159' MSL. **Rwy 12**, trees beginning 1227' from DER, left and right of centerline, up to 100' AGL/144' MSL. **Rwy 18**, trees and road beginning 5' from DER, 122' right of centerline, up to 15' AGL/55' MSL. Trees beginning 800' from DER, 6' right of centerline, up to 78' AGL/113' MSL. Trees beginning 833' from DER, 84' left of centerline, up to 75' AGL/114' MSL. Trees beginning 2718' from DER, 478' right of centerline, up to 100' AGL/155' MSL. **Rwy 24**, trees and road beginning 24' from DER, 63' left of centerline, up to 15' AGL/55' MSL. Trees beginning 1070' from DER, 330' left of centerline, up to 75' AGL/114' MSL. Trees beginning 1201' from DER, 219' right of centerline, up to 73' AGL/106' MSL. Trees beginning 1915' from DER, left and right of centerline, up to 100' AGL/139' MSL. **Rwy 30**, trees beginning 857' from DER, 384' left of centerline, up to 72' AGL/123' MSL. Trees and pole beginning 1093' from DER, 292' right of centerline, up to 77' AGL/123' MSL. Trees beginning 1660' from DER, left and right of centerline, up to 100' AGL/139' MSL. **Rwy 36**, trees beginning 335' from DER, 506' right of centerline, up to 69' AGL/113' MSL. Trees beginning 875' from DER, 644' left of centerline, up to 72' AGL/116' MSL. Trees beginning 1009' from DER, 76' left of centerline, up to 79' AGL/123' MSL. Trees and poles beginning 1517' from DER, 22' right of centerline, up to 100' AGL/149' MSL. Trees beginning 2075' from DER, 205' left of centerline, up to 100' AGL/146' MSL. Tower 2.4 NM from DER, 4367' right of centerline, 415' AGL/454' MSL**PLANT CITY, FL****PLANT CITY (PCM)****TAKEOFF MINIMUMS AND (OBSTACLE)  
DEPARTURE PROCEDURES**

ORIG 09127 (FAA)

NOTE: **Rwy 10**, trees beginning 264' from DER, 561' left of centerline, up to 100' AGL/229' MSL. Trees beginning 490' from DER, 13' right of centerline, up to 100' AGL/239' MSL. **Rwy 28**, trees beginning 50' from DER, 278' right of centerline, up to 100' AGL/254' MSL. Trees beginning 515' from DER, 15' left of centerline, up to 100' AGL/249' MSL. Train on railroad tracks, 380' from DER, 547' left of centerline, up to 23' AGL/172' MSL. Vehicles on roadway, 266' from DER, 137' left of centerline, up to 15' AGL/169' MSL.**POMPANO BEACH, FL****POMPANO BEACH AIRPARK (PMP)****TAKEOFF MINIMUMS AND (OBSTACLE)  
DEPARTURE PROCEDURES**

AMDT 5 14261 (FAA)

TAKEOFF MINIMUMS: **Rwy 10**, 300-1¼ or std. w/ min. climb of 261' per NM to 300. **Rwy 15**, 400-1½ or std. w/ min. climb of 441' per NM to 500.NOTE: **Rwy 6**, trees beginning 101' from DER, 26' left and 232' right of centerline, up to 70' AGL/88' MSL.**Rwy 10**, pole 154' from DER, 131' left of centerline, 9' AGL/18' MSL. Trees, pole, and building beginning 427' from DER, 12' left and 343' right of centerline, up to 49' AGL/63' MSL. Poles and buildings beginning 1264' from DER, 166' left and 286' right of centerline, up to 64' AGL/72' MSL. Building 5670' from DER, 604' right of centerline, 186' AGL/190' MSL. Buildings 1 NM from DER, 887' left of centerline, up to 201' AGL/210' MSL. **Rwy 15**, building, trees, and poles beginning 502' from DER, 306' left and 434' right of centerline, 44' AGL/54' MSL. Trees beginning 1229' from DER, 152' left and 190' right of centerline, up to 71' AGL/162' MSL. Building 5994' from DER, 1491' left of centerline, 213' AGL/221' MSL. Building 1.1 NM from DER, 1259' left of centerline, 300' AGL/310' MSL. Building 1.7 NM from DER, 1385' right of centerline, 255' AGL/265' MSL. **Rwy 24**, trees beginning 190' from DER, 304' right of centerline, up to 30' AGL/49' MSL. Trees beginning 423' from DER, 3' left of centerline, up to 47' AGL/66' MSL. Tanks, building, tree, and pole beginning 630' from DER, 23' right of centerline, 60' AGL/80' MSL. Trees beginning 2179' from DER, 253' left of centerline, up to 91' AGL/110' MSL. **Rwy 28**, trees beginning 358' from DER, 255' left of centerline, up to 25' AGL/44' MSL. Poles, buildings, trees, and tank beginning 722' from DER, 33' left and 238' right of centerline, up to 45' AGL/64' MSL. **Rwy 33**, buildings beginning 29' from DER, 398' left of centerline, 18' AGL/34' MSL. Trees beginning 629' from DER, 518' left of centerline, up to 59' AGL/77' MSL. Trees beginning 202' from DER, 548' right of centerline, up to 38' AGL/56' MSL.

08 JAN 2015 to 05 FEB 2015

08 JAN 2015 to 05 FEB 2015

15008


**TAKEOFF MINIMUMS, (OBSTACLE) DEPARTURE PROCEDURES, AND**

  
**DIVERSE VECTOR AREA (RADAR VECTORS)**

# TAKEOFF MINIMUMS, (OBSTACLE) DEPARTURE PROCEDURES, AND DIVERSE VECTOR AREA (RADAR VECTORS)

15008

## PONCE, PR

### MERCEDITA (PSE)

TAKEOFF MINIMUMS AND (OBSTACLE)  
DEPARTURE PROCEDURES  
AMDT 3 13066 (FAA)

TAKEOFF MINIMUMS: **Rwy 12**, 300-1¼ or std. w/min. climb of 490' per NM to 500. **Rwy 30**, 500-1½ or std. w/min. climb of 760' per NM to 700.

DEPARTURE PROCEDURE: **Rwy 12**, climb direct PSE VOR/DME and then proceed outbound on PSE VOR/DME R-121 to 2100, then climbing right turn to PSE VOR/DME and hold SE, left turns, 301° inbound, continue climb in hold until reaching enroute altitude.

**Rwy 30**, climbing left turn direct PSE VOR/DME and then proceed outbound on PSE VOR/DME R-121 to 2100, then climbing right turn direct PSE VOR/DME and hold SE, left turns, 301° inbound, continue climb in hold until reaching enroute altitude.

NOTE: **Rwy 12**, poles beginning 126' from DER, 434' right of centerline up to 64' AGL/88' MSL. Trees beginning 297' from DER, 96' left and right of centerline up to 75' AGL/93' MSL. Stacks beginning 5519' from DER, 1748' right of centerline, 204' AGL/240' MSL.

**Rwy 30**, poles beginning 145' from DER, 119' left and right of centerline up to 405' AGL/426' MSL. Building 1.5 NM from DER 158' AGL/219' MSL. Tower 5061' from DER, 1812' right of centerline, 154' AGL/521' MSL. Antenna on building 4659' from DER, 1575' right of centerline, 28' AGL/40' MSL. Transmission tower 5860' from DER, 135' right of centerline, 28' AGL/300' MSL.

## PUNTA GORDA, FL

### PUNTA GORDA (PGD)

TAKEOFF MINIMUMS AND (OBSTACLE)  
DEPARTURE PROCEDURES  
AMDT 2 12152 (FAA)

TAKEOFF MINIMUMS: **Rwys 9, 27**, NA-airport authority request.

NOTE: **Rwy 4**, tree 822' from DER, 583' left of centerline, 35' AGL/59' MSL. Trees beginning 34' from DER, 292' right of centerline, up to 60' AGL/84' MSL.

**Rwy 15**, trees beginning 43' from DER, 129' left of centerline, up to 48' AGL/68' MSL, trees beginning 133' from DER, 449' right of centerline, up to 84' AGL/104' MSL. **Rwy 22**, tree 138' from DER, 426' left of centerline, 14' AGL/29' MSL.

**Rwy 33**, tree 638' from DER, 618' left of centerline, 38' AGL/53' MSL. Tree 1170' from DER, 563' right of centerline, 35' AGL/54' MSL. Vehicle on road 273' from DER, 501' right of centerline, 15' AGL/29' MSL.

## QUINCY, FL

### QUINCY MUNI (2J9)

TAKEOFF MINIMUMS AND (OBSTACLE)  
DEPARTURE PROCEDURES  
ORIG 09071 (FAA)

TAKEOFF MINIMUMS: **Rwy 32**, 300-2 or std. w/min. climb of 217' per NM to 600, or alternatively, with standard takeoff minimums and a normal 200'/NM climb gradient, takeoff must occur no later than 1700' prior to DER.

NOTE: **Rwy 14**, trees beginning abeam DER, 421' left of centerline, up to 100' AGL/299' MSL. Vehicles on road abeam DER, 340' left of centerline, 15' AGL/214' MSL. Trees beginning abeam DER, 255' right of centerline, up to 100' AGL/309' MSL. Vehicles on road abeam DER, 174' right of centerline, 15' AGL/224' MSL. **Rwy 32**, trees beginning abeam DER, 307' left of centerline, up to 100' AGL/329' MSL. Vehicles on road abeam DER, 398' left of centerline, 15' AGL/244' MSL. Trees beginning 910' from DER, 722' right of centerline, up to 100' AGL/329' MSL. Power line beginning 1225' from DER, left and right of centerline, up to 79' AGL/327' MSL.

## ST. AUGUSTINE, FL

### NORTHEAST FLORIDA RGNL (SGJ)

TAKEOFF MINIMUMS AND (OBSTACLE)  
DEPARTURE PROCEDURES  
ORIG 07298 (FAA)

NOTE: **Rwy 2**, trees 1355' from DER, 314' right of centerline, 100' AGL/104' MSL. **Rwy 20**, aircraft on ramp abeam DER, 158' right of centerline, up to 32' AGL/41' MSL. Aircraft on taxiway 182' from DER, on centerline, up to 32' AGL/42' MSL. Buildings beginning 220' from DER, 402' right of centerline, up to 34' AGL/44' MSL. Hangars beginning 174' from DER, 180' left of centerline, up to 16' AGL/26' MSL. Vehicles on road and train on railroad beginning 419' from DER, 599' right of centerline, up to 23' AGL/37' MSL. Numerous trees beginning 589' from DER, 652' right of centerline, up to 100' AGL/114' MSL. Numerous trees beginning 754' from DER, 586' left of centerline, up to 100' AGL/109' MSL. **Rwy 24**, hangars beginning abeam DER, 400' left of centerline, up to 16' AGL/26' MSL. Aircraft on ramp 55' from DER, 119' right of centerline up to 32' AGL/41' MSL. Buildings beginning 150' from DER, 191' right of centerline, up to 34' AGL/44' MSL. Vehicles on road and train on railroad beginning 571' from DER, on centerline, up to 23' AGL/37' MSL. Numerous trees beginning 742' from DER, left and right of centerline, up to 100' AGL/114' MSL. **Rwy 31**, numerous trees beginning 87' from DER, 418' left of centerline, up to 89' AGL/98' MSL. Vehicles on road and train on railroad beginning at DER, 237' left of centerline, up to 23' AGL/37' MSL. Numerous trees beginning 242' from DER, 2' right of centerline, up to 85' AGL/99' MSL.

## ST. PETERSBURG, FL

### ALBERT WHITTED (SPG)

TAKEOFF MINIMUMS AND (OBSTACLE)  
DEPARTURE PROCEDURES  
AMDT 2 01163 (FAA)

TAKEOFF MINIMUMS: **Rwy 36**, 300-1 or std. with a min. climb of 320' per NM until 500.

DEPARTURE PROCEDURE: **Rwys 18,25**, climb runway heading to 500 before turning right. **Rwys 7,36**, climb runway heading to 500 before turning left.

NOTE: **Rwy 25**, 70' MSL/63' AGL building 350' from DER, 375' left of runway centerline.

15008

# TAKEOFF MINIMUMS, (OBSTACLE) DEPARTURE PROCEDURES, AND DIVERSE VECTOR AREA (RADAR VECTORS)

# TAKEOFF MINIMUMS, (OBSTACLE) DEPARTURE PROCEDURES, AND DIVERSE VECTOR AREA (RADAR VECTORS)

15008

## ST. PETERSBURG-CLEARWATER, FL

ST PETE-CLEARWATER INTL (PIE)

TAKEOFF MINIMUMS AND (OBSTACLE)  
DEPARTURE PROCEDURES

AMDT 3A 14093 (FAA)

TAKEOFF MINIMUMS: **Rwys 18R, 36L**, NA - VFR runway. **Rwy 22**, 200-1¼ or std. w/min. climb of 230' per NM to 300, or alternatively, with standard takeoff minimums and a normal 200' per NM climb gradient, takeoff must occur no later than 1700' prior to DER.

DEPARTURE PROCEDURE: **Rwy 9**, climb heading 093° to 500 before proceeding southbound.

NOTE: **Rwy 4**, trees beginning 174' from DER, 279' right of centerline, up to 61' AGL/65' MSL. Bush 495' from DER, 258' right of centerline, 27' AGL/31' MSL. Bush 511' from DER, 326' left of centerline, 17' AGL/21' MSL. Trees beginning 523' from DER, 225' left of centerline, up to 17' AGL/21' MSL. Boats beginning 775' from DER, on centerline, up to 25' AGL/25' MSL. **Rwy 9**, trees beginning 805' from DER, 470' right of centerline, up to 47' AGL/51' MSL. Tree 1617' from DER, 816' left of centerline, 60' AGL/64' MSL. **Rwy 18L**, building 689' from DER, 418' right of centerline, 34' AGL/44' MSL. Signs beginning 909' from DER, 98' right of centerline, up to 50' AGL/58' MSL. Poles beginning 970' from DER, 114' right of centerline, up to 51' AGL/58' MSL. Poles beginning 1015' from DER, 103' left of centerline, up to 40' AGL/47' MSL. Sign 1336' from DER, 198' left of centerline, 46' AGL/53' MSL. Tree 2100' from DER, 996' right of centerline, 96' AGL/105' MSL. Antenna on hopper 2583' from DER, 801' right of centerline, 76' AGL/89' MSL. **Rwy 22**, tower 123' from DER, 359' left of centerline, 24' AGL/33' MSL. Trees beginning 1235' from DER, 270' left of centerline, up to 65' AGL/70' MSL. Tree 1629' from DER, 88' right of centerline, 61' AGL/70' MSL. Tower 5591' from DER, 266' right of centerline, 153' AGL/168' MSL. **Rwy 27**, poles beginning 188' from DER, 138' right of centerline, up to 69' AGL/75' MSL. Vehicles on road 200' from DER, 418' right of centerline, 10' AGL/24' MSL. Building 552' from DER, 450' right of centerline, 26' AGL/34' MSL. Poles beginning 605' from DER, 179' left of centerline, up to 40' AGL/49' MSL. Trees beginning 1540' from DER, 224' left of centerline, up to 57' AGL/66' MSL. Antenna on tank 2188' from DER, 712' left of centerline, 70' AGL/80' MSL. **Rwy 36R**, boats beginning 646' from DER, 655' left of centerline, up to 25' AGL/25' MSL.

## SAN JUAN, PR

FERNANDO LUIS RIBAS DOMINICCI (SIG)

TAKEOFF MINIMUMS AND (OBSTACLE)  
DEPARTURE PROCEDURES

ORIG 00027 (FAA)

TAKEOFF MINIMUMS: **Rwy 9**, 400-2 or std. with a min. climb of 290' per NM to 400. **Rwy 27**, 300-1.

NOTE: **Rwy 9**, numerous close-in trees and buildings to 177' AGL right of centerline within 3200' of departure end, additional buildings to 177' AGL left and right of centerline within 5500' of departure end. **Rwy 27**, ship maneuvering area within 5200' of DER.

## SAN JUAN, PR (CON'T)

LUIS MUNOZ MARIN INTL (SJU)

TAKEOFF MINIMUMS AND (OBSTACLE)  
DEPARTURE PROCEDURES

AMDT 7 09239 (FAA)

DEPARTURE PROCEDURE: **Rwy 8**, climb on a heading between 109° CW to 258° from DER, or minimum climb of 381' per NM to 5000 for all other courses. **Rwy 10**, climb on a heading between 91° CW to 281° from DER, or minimum climb of 390' per NM to 4900 for all other courses. **Rwy 26**, climb on a heading between 255° CW to 078° from DER, or minimum climb of 311' per NM to 4800 for all other courses. **Rwy 28**, climb on a heading between 260° CW to 101° from DER, or minimum climb of 323' per NM to 4800 for all other courses.

NOTE: **Rwy 8**, trees beginning 21' from DER, left and right of centerline, up to 84' AGL/107' MSL. **Rwy 10**, trees beginning 157' from DER, left and right of centerline, up to 54' AGL/61' MSL. **Rwy 26**, building and trees beginning 8' from DER, 339' right of centerline, up to 138' AGL/154' MSL. Sign and bushes beginning 381' from DER, 374' left of centerline, up to 28' AGL/35' MSL. **Rwy 28**, bush and trees beginning 159' from DER, 476' left of centerline, up to 61' AGL/71' MSL. Pole 438' from DER, 587' left of centerline, 31' AGL/38' MSL.

## SARASOTA (BRADENTON), FL

SARASOTA/BRADENTON INTL (SRQ)

TAKEOFF MINIMUMS AND (OBSTACLE)  
DEPARTURE PROCEDURES

AMDT 2A 11349 (FAA)

NOTE: **Rwy 4**, vehicles on road 79' from DER, 500' right of centerline, up to 17' AGL/42' MSL. Buildings beginning 142' from DER, 462' left of centerline, up to 23' AGL/48' MSL. Trees beginning 357' from DER, 356' right of centerline, up to 78' AGL/101' MSL. Trees beginning 925' from DER, 55' right of centerline, up to 79' AGL/102' MSL. Poles beginning 317' from DER, 461' right of centerline, up to 57' AGL/80' MSL. Poles beginning 1215' from DER, 113' left of centerline, up to 42' AGL/65' MSL. Camera 1012' from DER, 251' left of centerline, 29' AGL/52' MSL. **Rwy 14**, trees beginning 119' from DER, 430' left of centerline, up to 32' AGL/55' MSL. Trees beginning 345' from DER, 362' left of centerline, up to 74' AGL/94' MSL. Railroad 431' from DER, 533' left of centerline, 24' AGL/44' MSL. **Rwy 22**, vehicles on road 125' from DER, through centerline, up to 17' AGL/38' MSL. Trees beginning 235' from DER, 518' right of centerline, up to 103' AGL/113' MSL. Trees beginning 819' from DER, 18' left of centerline, up to 95' AGL/102' MSL. Poles/signs beginning 346' from DER, 528' right of centerline, up to 39' AGL/53' MSL. Poles/signs beginning 882' from DER, 38' left of centerline, up to 46' AGL/63' MSL. Buildings beginning 1689' from DER, 61' left of centerline, up to 65' AGL/75' MSL. Pole 2225' from DER, 751' left of centerline, 65' AGL/85' MSL. **Rwy 32**, wall 199' from DER, 465' left of centerline, up to 39' AGL/49' MSL. Antenna 732' from DER, 168' left of centerline, 44' AGL/54' MSL. Trees beginning 775' from DER, 274' left of centerline, up to 78' AGL/88' MSL. Trees beginning 606' from DER, 645' right of centerline, 61' AGL/71' MSL.

08 JAN 2015 to 05 FEB 2015

08 JAN 2015 to 05 FEB 2015

15008

# TAKEOFF MINIMUMS, (OBSTACLE) DEPARTURE PROCEDURES, AND DIVERSE VECTOR AREA (RADAR VECTORS)

# TAKEOFF MINIMUMS, (OBSTACLE) DEPARTURE PROCEDURES, AND DIVERSE VECTOR AREA (RADAR VECTORS)

15008

## SEBASTIAN, FL

### SEBASTIAN MUNI (X26)

TAKEOFF MINIMUMS AND (OBSTACLE)  
DEPARTURE PROCEDURES  
ORIG-A 13010 (FAA)

TAKEOFF MINIMUMS: **Rwy 10**, 300-1 or std. w/min. climb of 270' per NM to 300.

NOTE: **Rwy 5**, trees beginning 1700' from DER, 494' right of centerline, up to 100' AGL/124' MSL. Trees beginning 4060' from DER, 391' right of centerline, up to 100' AGL/125' MSL. Trees beginning 3702' from DER, 1281' left of centerline, up to 100' AGL/125' MSL. **Rwy 10**, vehicles on roadway 388' from DER, across centerline, up to 15' AGL/40' MSL. Trees beginning 2970' from DER, 534' left of centerline, up to 100' AGL/125' MSL. Trees beginning 3047' from DER, 405' right of centerline, up to 100' AGL/125' MSL. Tower 5190' from DER, 1671' left of centerline, 173' AGL/198' MSL. **Rwy 23**, trees beginning 570' from DER, 225' right of centerline, up to 100' AGL/119' MSL. Trees beginning 647' from DER, 354' left of centerline, up to 100' AGL/124' MSL. **Rwy 28**, trees beginning 1035' from DER, 391' left of centerline, up to 100' AGL/119' MSL. Trees beginning 1057' from DER, 515' right of centerline, up to 100' AGL/119' MSL.

## SEBRING, FL

### SEBRING RGNL (SEF)

TAKEOFF MINIMUMS AND (OBSTACLE)  
DEPARTURE PROCEDURES  
AMDT 1 13122 (FAA)

NOTE: **Rwy 1**, fence, sign, Navaid, and trees beginning 28' from DER, 108' left of centerline, up to 9' AGL/63' MSL. Tree 107' from DER, 263' right of centerline, 9' AGL/63' MSL. Trees beginning 938' from DER, 520' right of centerline, up to 43' AGL/102' MSL. Trees beginning 1184' from DER, 452' left of centerline, up to 45' AGL/104' MSL. **Rwy 14**, fence and trees beginning 12' from DER, 318' right of centerline, up to 10' AGL/65' MSL. Fence beginning 18' from DER, 320' left of centerline, up to 10' AGL/64' MSL. **Rwy 19**, trees beginning 11' from DER, 216' right of centerline, up to 10' AGL/66' MSL. Trees beginning 1891' from DER, 332' right of centerline, up to 77' AGL/132' MSL. **Rwy 32**, fence, train on track, vehicle on road, and trees beginning 66' from DER, 5' right of centerline, up to 26' AGL/79' MSL. Building, sign, pole, train on tracks, vehicles on road, fence, and trees beginning 105' from DER, 72' left of centerline, 39' AGL/91' MSL. Tank, building, poles, and trees beginning 576' from DER, 48' right of centerline, up to 82' AGL/126' MSL. Trees beginning 759' from DER, 2' left of centerline, up to 55' AGL/108' MSL.

## STUART, FL

### WITHAM FIELD (SUA)

TAKEOFF MINIMUMS AND (OBSTACLE)  
DEPARTURE PROCEDURES  
AMDT 2B 13122 (FAA)

DEPARTURE PROCEDURE: **Rwy 25**, climb heading 290° to 1700 before proceeding on course. **Rwy 30**, climb heading 296° to 1300 before proceeding on course. NOTE: **Rwy 7**, trees beginning 75' from DER, 289' left of centerline, up to 100' AGL/114' MSL. Trees beginning 268' from DER, 287' right of centerline, up to 100' AGL/109' MSL. **Rwy 12**, pole and trees beginning 35' from DER, 55' left of centerline, up to 59' AGL/73' MSL. Trees beginning 763' from DER, 45' right of centerline, up to 67' AGL/81' MSL. **Rwy 16**, trees beginning 627' from DER, 42' left of centerline, up to 46' AGL/60' MSL. Trees beginning 70' from DER, 202' right of centerline, up to 92' AGL/106' MSL. **Rwy 25**, storage racks and trees beginning 176' from DER, 17' left of centerline, up to 36' AGL/55' MSL. Antenna tower 4948' from DER, 1539' left of centerline, 151' AGL/167' MSL. Trees beginning 123' from DER, 316' right of centerline, up to 55' AGL/79' MSL. **Rwy 30**, trees beginning 155' from DER, 47' left of centerline, up to 72' AGL/86' MSL. Poles and trees beginning 5' from DER, 28' right of centerline, up to 64' AGL/78' MSL. **Rwy 34**, trees beginning 362' from DER, 473' left of centerline, up to 100' AGL/109' MSL. Trees beginning 281' from DER, 385' right of centerline, up to 100' AGL/109' MSL.

## TALLAHASSEE, FL

### TALLAHASSEE RGNL (TLH)

TAKEOFF MINIMUMS AND (OBSTACLE)  
DEPARTURE PROCEDURES  
AMDT 1 13010 (FAA)

NOTE: **Rwy 9**, control box 12' from DER, 123' right of centerline, 3' AGL/49' MSL. Trees beginning 732' from DER, 658' left of centerline, up to 62' AGL/121' MSL. Agricultural equipment, pole, mobile crane, and trees beginning 1237' from DER, 651' right of centerline, up to 74' AGL/134' MSL. **Rwy 18**, trees beginning 2358' from DER, 761' left of centerline, up to 84' AGL/143' MSL. Poles and trees beginning 1336' from DER, 790' right of centerline, up to 62' AGL/121' MSL. **Rwy 27**, trees beginning 2463' from DER, 9' left of centerline, up to 62' AGL/171' MSL. Trees beginning 2780' from DER, 3' right of centerline, up to 55' AGL/154' MSL. **Rwy 36**, trees beginning 1270' from DER, 198' left of centerline, up to 81' AGL/140' MSL. Trees beginning 1076' from DER, 94' right of centerline, up to 71' AGL/140' MSL.

## TAMPA, FL

### PETER O. KNIGHT (TPF)

TAKEOFF MINIMUMS AND (OBSTACLE)  
DEPARTURE PROCEDURES  
AMDT 7 12152 (FAA)

TAKEOFF MINIMUMS: **Rwys 4, 36**, NA - Environmental. **Rwy 18**, 300-1 or std. w/min. climb of 260' per NM to 300.

NOTE: **Rwy 18**, small boats beginning 250' from DER, left and right of centerline, up to 30' MSL. **Rwy 22**, trees/buildings beginning at DER, 180' right of centerline, up to 75' AGL/82' MSL. Small boats beginning 450' from DER, 380' left of centerline, up to 30' MSL.

15008

# TAKEOFF MINIMUMS, (OBSTACLE) DEPARTURE PROCEDURES, AND DIVERSE VECTOR AREA (RADAR VECTORS)

# TAKEOFF MINIMUMS, (OBSTACLE) DEPARTURE PROCEDURES, AND DIVERSE VECTOR AREA (RADAR VECTORS)

15008

## TAMPA, FL (CON'T)

### TAMPA EXECUTIVE (VDF)

#### TAKEOFF MINIMUMS AND (OBSTACLE) DEPARTURE PROCEDURES AMD T 1 11013 (FAA)

TAKEOFF MINIMUMS: **Rwy 18**, std. w/ min. climb of 230' per NM to 900, or 900-2½' for climb in visual conditions.

DEPARTURE PROCEDURE: **Rwy 5**, climb heading 046° to 500 before turning left. **Rwy 18**, for climb in visual conditions cross Tampa Executive Airport at or above 800 before proceeding on course.

NOTE: **Rwy 5**, trees beginning 1920' from DER, 45' right of centerline, up to 70' AGL/95' MSL. Trees beginning 925' from DER, 343' left of centerline, up to 64' AGL/149' MSL. **Rwy 18**, three light poles beginning 2894' from DER, 12' right of centerline, up to 149' AGL/149' MSL. Trees beginning 193' from DER, 287' left of centerline, up to 68' AGL/91' MSL. Three light poles beginning 2894' from DER, 5' right of centerline, up to 129' AGL/149' MSL. Light on hanger 287' from DER, 336' left of centerline, 24' AGL/44' MSL. **Rwy 23**, trees beginning at DER, 421' right of centerline, up to 58' AGL/73' MSL. Obstruction light on navaid 611' from DER, 258' left of centerline, 23' AGL/37' MSL. Windsock 731' from DER, 258' right of centerline, 24' AGL/38' MSL. **Rwy 36**, trees beginning 37' from DER, 329' right of centerline, up to 72' AGL/82' MSL. Lighted tower 3260' from DER, 348' left of centerline, 105' AGL/122' MSL. Trees beginning 1273' from DER, 158' left of centerline, up to 76' AGL/86' MSL. Antenna 627' from DER, 629' left of centerline, 78' AGL/88' MSL.

## TAMPA INTL (TPA)

#### TAKEOFF MINIMUMS AND (OBSTACLE) DEPARTURE PROCEDURES AMD T 9 11013 (FAA)

DEPARTURE PROCEDURE: **Rwy 10**, climb heading 097° to 800 before turning right.

NOTE: **Rwy 1L**, tree 753' from DER, 697' right of centerline, 42' AGL/66' MSL. **Rwy 1R**, power lines 2091' from DER, 1018' right of centerline, 50' AGL/84' MSL. **Rwy 10**, trees beginning 1282' from DER, 1' right of centerline, up to 106' AGL/118' MSL. Tower 4214' from DER, 266' right of centerline, 105' AGL/145' MSL. Ground 135' from DER, 494' left of centerline, 30' MSL. Trees beginning 1643' from DER, 205' left of centerline, up to 103' AGL/114' MSL. **Rwy 19L**, antenna on building 3279' from DER, 1160' left of centerline, 145' AGL/155' MSL. Building 4755' from DER, 1523' left of centerline, 146' AGL/155' MSL. **Rwy 19R**, trees beginning 482' from DER, 578' right of centerline, up to 33' AGL/37' MSL. **Rwy 28**, trees beginning 479' from DER, 359' right of centerline, up to 53' AGL/67' MSL. Sign 764' from DER, 436' right of centerline, 26' AGL/40' MSL. Multiple trees beginning 129' from DER, 84' left of centerline, up to 54' AGL/68' MSL. Pole 475' from DER, 437' left of centerline, 30' AGL/35' MSL. Plane on taxiway 1497' from DER, right and left of runway centerline, up to 65' AGL/74' MSL. Building 4355' from DER, 1647' left of centerline, 146' AGL/151' MSL. Antenna on pole 5583' from DER, 1162' left of centerline, 146' AGL/158' MSL.

## TITUSVILLE, FL

### ARTHUR DUNN AIR PARK (X21)

#### TAKEOFF MINIMUMS AND (OBSTACLE) DEPARTURE PROCEDURES AMD T 2 11069 (FAA)

TAKEOFF MINIMUMS: **Rwy 15**, 400-2¼ or std. w/min. climb of 350' per NM to 700.

NOTE: **Rwy 15**, trees beginning 40' from DER, left and right of centerline, up to 77' AGL/111' MSL. Towers beginning 4975' from DER, 132' right of centerline, up to 399' AGL/419' MSL. Buildings and poles beginning 170' from DER, left and right of centerline, up to 40' AGL/71' MSL. **Rwy 33**, signs, poles, and antennas beginning 7' from DER, left and right of centerline, up to 56' AGL/85' MSL. Trees beginning 128' from DER, left and right of centerline, up to 60' AGL/89' MSL. Vehicles beginning 414' from DER, left and right of centerline, up to 15' AGL/39' MSL.

## NASA SHUTTLE LANDING FACILITY (TTS)

#### TAKEOFF MINIMUMS AND (OBSTACLE) DEPARTURE PROCEDURES AMD T 1 10210 (FAA)

DEPARTURE PROCEDURE: **Rwy 15**, climb heading 155° to 700 before turning Eastbound.

NOTE: **Rwy 15**, trees beginning 2177' from DER, across centerline, up to 100' AGL/104' MSL. **Rwy 33**, trees beginning 445' from DER, 482' right of centerline, up to 100' AGL/106' MSL. Trees beginning 1275' from DER, 80' left of centerline, up to 100' AGL/106' MSL.

## SPACE COAST RGNL (TIX)

#### TAKEOFF MINIMUMS AND (OBSTACLE) DEPARTURE PROCEDURES ORIG (FAA) 99028

NOTE: **Rwy 36**, 60' AGL trees 254' from DER, 526' right of centerline.

## TYNDALL AFB (KPAM)

### PANAMA CITY, FL

#### TAKEOFF MINIMUMS AND (OBSTACLE) DEPARTURE PROCEDURES ORIG, 14289

TAKE-OFF OBSTACLES: **Rwy 14L**, 25' MSL/ 10' AGL vehicle 124' from DER, 533' right of centerline. 15' MSL terrain 0' from DER, 500' right of centerline. **Rwy 32L**, 26' MSL/11' AGL building 188' from DER, 519' left of centerline. **Rwy 32R**, 25' MSL/10' AGL vehicle 15' inward of DER, 472' right of centerline.

08 JAN 2015 to 05 FEB 2015

08 JAN 2015 to 05 FEB 2015

15008

# TAKEOFF MINIMUMS, (OBSTACLE) DEPARTURE PROCEDURES, AND DIVERSE VECTOR AREA (RADAR VECTORS)

# TAKEOFF MINIMUMS, (OBSTACLE) DEPARTURE PROCEDURES, AND DIVERSE VECTOR AREA (RADAR VECTORS)

## UMATILLA, FL

### UMATILLA MUNI (X23)

TAKEOFF MINIMUMS AND (OBSTACLE)  
DEPARTURE PROCEDURES  
ORIG 13346 (FAA)

NOTE: **Rwy 1**, trees beginning abeam DER, 319' right of centerline, up to 57' AGL/191' MSL. Trees beginning abeam DER, 240' left of centerline, up to 57' AGL/176' MSL. Fence beginning abeam DER, 233' left of centerline, up to 6' AGL/120' MSL. Fence beginning abeam DER, 196' right of centerline, up to 6' AGL/120' MSL. Terrain 275' from DER, 495' right of centerline, up to 131' MSL. **Rwy 19**, buildings beginning abeam DER, 258' right of centerline, up to 25' AGL/129' MSL. Vehicles on roadway, beginning abeam DER, 172' left of centerline, up to 15' AGL/114' MSL. Fence beginning abeam DER, 177' left of centerline, up to 6' AGL/105' MSL. Trees beginning abeam DER, 361' left of centerline, up to 57' AGL/156' MSL. Terrain 7' from DER, 417' right of centerline, 108' MSL.

## VENICE, FL

### VENICE MUNI (VNC)

TAKEOFF MINIMUMS AND (OBSTACLE)  
DEPARTURE PROCEDURES  
AMDT 3 13262 (FAA)

TAKEOFF MINIMUMS: **Rwy 23**, 300-1½ or std. w/min. climb of 248' per NM to 300. **Rwy 31**, 300-1½ or std. w/min. climb of 237' per NM to 300.

DEPARTURE PROCEDURE: **Rwy 5**, climb heading 050° to 800 before turning right. **Rwy 31**, climb heading 305° to 1500 before proceeding on course.

NOTE: **Rwy 5**, bush 5' from DER, 307' right of centerline, 12' AGL/27' MSL. Sign 50' from DER, 162' left of centerline, 2' AGL/19' MSL. Trees beginning 293' from DER, 172' left of centerline, up to 52' AGL/67' MSL. Poles and buildings beginning 1049' from DER, left and right of centerline, up to 65' AGL/67' MSL. Trees beginning 459' from DER, 356' right of centerline, up to 49' AGL/59' MSL. **Rwy 23**, trees beginning 8' from DER, 199' left of centerline, up to 42' AGL/47' MSL. Trees beginning 22' from DER, 196' right of centerline, up to 33' AGL/38' MSL. Pole 450' from DER, 594' left of centerline, 28' AGL/32' MSL. Ships beginning 6052' from DER, left and right of centerline, up to 200' AGL/200' MSL. **Rwy 13**, trees beginning 2' from DER, 225' left of centerline, up to 70' AGL/80' MSL. Trees beginning 4' from DER, 279' right of centerline, up to 75' AGL/85' MSL. Pole 747' from DER, 651' left of centerline, 33' AGL/51' MSL. **Rwy 31**, trees beginning abeam DER, 253' left of centerline, up to 67' AGL/77' MSL. Trees beginning 384' from DER, 627' left of centerline, up to 59' AGL/69' MSL. Trees beginning 608' from DER, 257' right of centerline, up to 73' AGL/83' MSL. Poles beginning 693' from DER, 262' left of centerline, up to 31' AGL/43' MSL. Poles beginning 804' from DER, 475' right of centerline, up to 30' AGL/44' MSL. Antennas/tower beginning 1015' from DER, 498' left of centerline, up to 52' AGL/63' MSL. Ships beginning 6035' from DER, left and right of centerline, up to 200' AGL/200' MSL.

## VERO BEACH, FL

### VERO BEACH MUNI (VRB)

TAKEOFF MINIMUMS AND (OBSTACLE)  
DEPARTURE PROCEDURES  
ORIG-A 14093 (FAA)

NOTE: **Rwy 4**, multiple trees beginning 813' from DER, 178' left of centerline, up to 100' AGL/120' MSL. Multiple trees beginning 3003' from DER, 93' right of centerline, up to 83' AGL/100' MSL. **Rwy 12L**, multiple trees beginning 171' from DER, 455' right of centerline, up to 57' AGL/74' MSL. Multiple trees and lights beginning 547' from DER, 259' left of centerline, up to 39' AGL/56' MSL. Storage tank 1813' from DER, 763' right of centerline, 45' AGL/74' MSL. **Rwy 12R**, pole 709' from DER, 522' left of centerline, 28' AGL/45' MSL. Spire 1622' from DER, 574' right of centerline, 44' AGL/61' MSL. **Rwy 22**, vehicles on road abeam DER, 421' left of centerline, up to 15' AGL/39' MSL. Vehicles on road 408' from DER, left and right of centerline, up to 15' AGL/39' MSL. Multiple trees beginning 1404' from DER, 272' left of centerline, up to 64' AGL/84' MSL. Multiple trees beginning 1989' from DER, 126' right of centerline, up to 68' AGL/88' MSL. **Rwy 30L**, multiple trees beginning 1206' from DER, 46' right of centerline, up to 100' AGL/120' MSL. Multiple trees beginning 1575' from DER, 135' left of centerline, up to 61' AGL/81' MSL. **Rwy 30R**, multiple antennas and trees beginning 1656' from DER, 111' right of centerline, up to 70' AGL/90' MSL. Multiple trees beginning 1782' from DER, 247' left of centerline, up to 65' AGL/85' MSL.

## WAUCHULA, FL

### WAUCHULA MUNI (CHN)

TAKEOFF MINIMUMS AND (OBSTACLE)  
DEPARTURE PROCEDURES  
AMDT 1 07018

NOTE: **Rwy 18**, trees 450' from DER, 130' left of centerline, 22' AGL/126' MSL. **Rwy 36**, tree 183' from DER, 350' left of centerline, 49' AGL/145' MSL. Power line 582' from DER, on centerline, 51' AGL/140' MSL. Tree, 323' from DER, 490' left of centerline, 100' AGL/200' MSL. Tree 39' from DER, 486' right of centerline, 100' AGL/185' MSL.



# TAKEOFF MINIMUMS, (OBSTACLE) DEPARTURE PROCEDURES, AND DIVERSE VECTOR AREA (RADAR VECTORS)

15008

## WEST PALM BEACH, FL

NORTH PALM BEACH COUNTY GENERAL  
AVIATION (F45)

TAKEOFF MINIMUMS AND (OBSTACLE)  
DEPARTURE PROCEDURES  
ORIG 09015 (FAA)

TAKEOFF MINIMUMS: **Rwy 8L, 26R**, NA-turf runway.  
NOTE: **Rwy 8R**, trees beginning 582' from DER, 47' right of centerline, up to 100' AGL/124' MSL. Trees beginning 950' from DER, 56' left of centerline, up to 100' AGL/124' MSL. **Rwy 13**, trees beginning at DER, 14' right of centerline, up to 100' AGL/124' MSL. Trees beginning 144' from DER, 29' left of centerline, up to 100' AGL/124' MSL. **Rwy 26L**, trees 43' from DER, 418' left of centerline, up to 8' AGL/23' MSL. **Rwy 31**, trees beginning 87' from DER, 26' right of centerline, up to 68' AGL/83' MSL. Craft 114' from DER, 425' left of centerline, up to 20' AGL/44' MSL. Trees beginning 458' from DER, 91' left of centerline, up to 100' AGL/124' MSL.

## PALM BEACH COUNTY PARK (LNA)

TAKEOFF MINIMUMS AND (OBSTACLE)  
DEPARTURE PROCEDURES

TAKEOFF MINIMUMS: **Rwy 3**, 300-1 or std. with a min. climb of 330' per NM to 400. **Rwy 33**, 300-1 or std. with a min. climb of 460' per NM to 500.

DEPARTURE PROCEDURE: **Rwys 21, 33**, climb runway heading to 1000 before turning west. **Rwy 27**, climbing left turn to 1000 via heading 180° before proceeding on course.

NOTE: **Rwy 3**, crane 1.25 NM from DER, 1660' right of centerline, 260' AGL/285' MSL. **Rwy 33**, crane 4700' from DER, on centerline, 220' AGL/234' MSL.

## PALM BEACH INTL (PBI)

TAKEOFF MINIMUMS AND (OBSTACLE)  
DEPARTURE PROCEDURES

AMDT 3 09351 (FAA)

DEPARTURE PROCEDURE: **Rwy 28L**, climb heading 279° to 1200 before turning left. **Rwy 28R**, climb heading 279° to 1200 before turning left.

NOTE: **Rwy 10R**, antenna on hanger 177' from DER, 450' right of centerline, 38' AGL/57' MSL. **Rwy 10L**, light pole 1461' from DER, 843' right of centerline, 45' AGL/64' MSL. **Rwy 14**, transmission line tower, traffic signal, poles, and trees beginning 649' from DER, 24' left of centerline, up to 71' AGL/90' MSL. Vehicles on road, light poles, and trees beginning 168' from DER, 76' right of centerline, up to 87' AGL/106' MSL. **Rwy 28R**, light pole and trees beginning 1205' from DER, 323' left of centerline, up to 63' AGL/82' MSL. Sign, light pole, and trees beginning 1233' from DER, 155' right of centerline, up to 44' AGL/63' MSL. **Rwy 32**, trees beginning 1993' from DER, 444' left of centerline, up to 69' AGL/88' MSL. Trees beginning 1108' from DER, 548' right of centerline, up to 70' AGL/89' MSL.

## WHITING FLD NAS-SOUTH (KNDZ)

MILTON, FL

TAKEOFF MINIMUMS AND (OBSTACLE) DEPARTURE  
PROCEDURES

12264

TAKEOFF OBSTACLES: **Rwy 5**, trees 809' from DER, 646' left of centerline, 82' AGL/233' MSL. **Rwy 32**, trees 540' from DER, 435' right of centerline, 64' AGL/262' MSL.

## WILLISTON, FL

WILLISTON MUNI (X60)  
TAKEOFF MINIMUMS AND (OBSTACLE)  
DEPARTURE PROCEDURES

AMDT 2 07074 (FAA)

TAKEOFF MINIMUMS: **Rwy 5**, 400-2½ or std. w/ min. climb of 257' per NM to 600.

DEPARTURE PROCEDURE: **Rwy 5**, climb heading 049° to 500 before proceeding on course. **Rwy 14**, climb heading 142° to 600 before proceeding on course. **Rwy 23**, climb on a heading between 253° clockwise 048° from DER, or minimum climb of 248' per NM to 1900 for all other courses.

NOTE: **Rwy 5**, brush and multiple trees beginning 38' from DER, 54' left of centerline, up to 100' AGL/179' MSL. Tower 2 NM from DER, 2343' left of centerline, 324' AGL/399' MSL. Brush and multiple trees beginning 49' from DER, 234' right of centerline, up to 100' AGL/179' MSL. **Rwy 14**, multiple trees 799' from DER, on centerline, up to 30' AGL/99' MSL. Multiple trees beginning 1143' from DER, 381' left of centerline, up to 100' AGL/174' MSL. Road and multiple trees beginning 13' from DER, 208' right of centerline, up to 100' AGL/179' MSL. **Rwy 23**, multiple trees beginning 445' from DER, 8' left of centerline, up to 100' AGL/184' MSL. Multiple trees beginning 430' from DER, 403' right of centerline, up to 100' AGL/189' MSL. **Rwy 32**, multiple trees 799' from DER, on centerline, up to 50' AGL/124' MSL. Multiple trees beginning 719' from DER, 288' left of centerline, up to 100' AGL/194' MSL. Multiple trees beginning 497' from DER, 442' right of centerline, up to 100' AGL/194' MSL.

## WINTER HAVEN, FL

WINTER HAVEN'S GILBERT (GIF)  
TAKEOFF MINIMUMS AND (OBSTACLE)  
DEPARTURE PROCEDURES

AMDT 1 10210 (FAA)

TAKEOFF MINIMUMS: **Rwy 23**, 300-1¼ or std. w/ min. climb of 325' per NM to 500. **Rwy 29**, std. w/ min. climb of 250' per NM to 700, or 900-2½ for climb in visual conditions.

DEPARTURE PROCEDURE: **Rwy 29**, for climb in visual conditions, cross Winter Haven's Gilbert Field at or above 900 before proceeding on course.

NOTE: **Rwy 5**, trees beginning 55' from DER, 340' left of centerline, up to 62' AGL/196' MSL. Trees 207' from DER, 465' right of centerline, up to 40' AGL/155' MSL. Vehicles on roadway, 227' from DER, 346' left of centerline, up to 17' AGL/151' MSL. Trees beginning 1712' from DER, 75' left of centerline, up to 81' AGL/200' MSL. **Rwy 11**, trees beginning 72' from DER, 330' left of centerline, up to 67' AGL/187' MSL. Vehicles on roadway 214' from DER, 277' right of centerline, up to 17' AGL/155' MSL. Trees beginning 445' from DER, 363' right of centerline, up to 82' AGL/203' MSL. **Rwy 23**, trees beginning 176' from DER, 345' left of centerline, up to 99' AGL/221' MSL. Tank 1.0 NM from DER, 972' left of centerline, 176' AGL/328' MSL. **Rwy 29**, trees beginning 75' from DER, 283' left of centerline, up to 59' AGL/187' MSL. Trees beginning 182' from DER, 284' right of centerline, up to 59' AGL/184' MSL. Tower 2.0 NM from DER, 2511' left of centerline, 310' AGL/457' MSL.

08 JAN 2015 to 05 FEB 2015

08 JAN 2015 to 05 FEB 2015

15008

# TAKEOFF MINIMUMS, (OBSTACLE) DEPARTURE PROCEDURES, AND DIVERSE VECTOR AREA (RADAR VECTORS)


**TAKEOFF MINIMUMS, (OBSTACLE) DEPARTURE PROCEDURES, AND**

  
**DIVERSE VECTOR AREA (RADAR VECTORS)**

15008

**ZEPHYRHILLS, FL**

ZEPHYRHILLS MUNI (ZPH)

TAKEOFF MINIMUMS AND (OBSTACLE)

DEPARTURE PROCEDURES

AMDT 2 14261 (FAA)

NOTE: **Rwy 1**, trees beginning 836' from DER, 160' right of centerline, up to 77' AGL/157' MSL. Trees beginning 374' from DER, 586' left of centerline, up to 55' AGL/136' MSL. Trees beginning 1332' from DER, 7' left of centerline, up to 87' AGL/167' MSL. **Rwy 5**, trees beginning 1087' from DER, 101' left of centerline, up to 65' AGL/141' MSL. Trees beginning 455' from DER, 432' right of centerline, up to 53' AGL/125' MSL. Trees beginning 1030' from DER, 19' right of centerline, up to 77' AGL/151' MSL. **Rwy 19**, fence 77' from DER, 464' left of centerline, 6' AGL/90' MSL. Trees beginning 196' from DER, 339' left of centerline, up to 74' AGL/158' MSL. Trees beginning 1345' from DER, 188' left of centerline, up to 89' AGL/168' MSL. Tree 35' from DER, 423' right of centerline, 44' AGL/129' MSL. Trees beginning 266' from DER, 127' right of centerline, up to 72' AGL/151' MSL. **Rwy 23**, trees and poles beginning 1069' from DER, 75' left of centerline, up to 52' AGL/142' MSL. Trees beginning 478' from DER, 23' right of centerline, up to 78' AGL/168' MSL.

08 JAN 2015 to 05 FEB 2015

08 JAN 2015 to 05 FEB 2015

15008


**TAKEOFF MINIMUMS, (OBSTACLE) DEPARTURE PROCEDURES, AND**

  
**DIVERSE VECTOR AREA (RADAR VECTORS)**