

DIDLY FOUR DEPARTURE

SL-266 (FAA)

MISSOULA INTL (MSO)
MISSOULA, MONTANA

**TOP ALTITUDE:
ASSIGNED BY ATC**

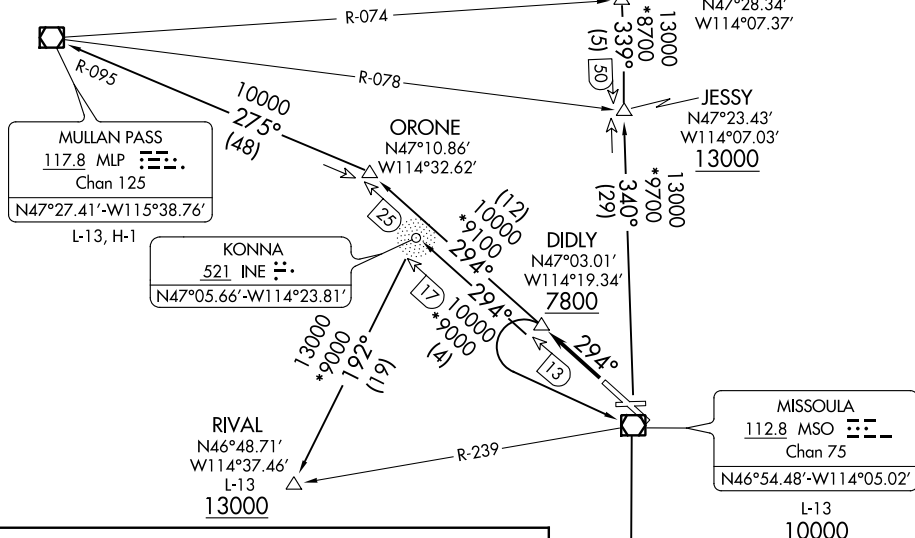
NOTE: Chart not to scale.

TAKEOFF MINIMUMS

Rwy 29: Standard with minimum climb of 400' per NM to 7800.

KALISPELL
113.2 FCA
Chan 79
N48°12.85'-W114°10.55'
L-13, H-1

ATIS 126.65
GND CON 121.9
MISSOULA TOWER* 118.4 377.175
SPOKANE DEP CON 124.9 298.95
SALT LAKE CITY CENTER 133.4 285.4



DEPARTURE ROUTE DESCRIPTION

TAKEOFF RUNWAY 29: Climb on MSO R-294 to cross DIDLY INT at or above 7800, thence on assigned transition or route.

KALISPELL TRANSITION (DIDLY4.FCA): From over DIDLY INT on MSO R-294, left turn to MSO VOR/DME, then on MSO R-340 to JESSY, then on MSO R-340 and FCA R-159 to FCA VOR/DME.

MISSOULA TRANSITION (DIDLY4.MSO): From over DIDLY INT on MSO R-294, left turn to MSO VOR/DME.

MULLAN PASS TRANSITION (DIDLY4.MLP): From over DIDLY INT on MSO R-294 to ORONE, then on MLP R-095 to MLP VOR/DME.

RIVAL TRANSITION (DIDLY4.RIVAL): From over DIDLY INT on MSO R-294 to INE NDB, then on INE 192° bearing to RIVAL INT.

SALMON TRANSITION (DIDLY4.LKT): From over DIDLY INT on MSO R-294, left turn to MSO VOR/DME, then on MSO R-163 and LKT R-347 to LKT VOR/DME.

NOTE: DME required.
NOTE: RIVAL TRANSITION:
Requires a minimum climb of 435' per NM to 10000.

DIDLY FOUR DEPARTURE

(DIDLY4.DIDLY) 31MAR16

MISSOULA, MONTANA
MISSOULA INTL (MSO)

NW-1, 07 DEC 2017 to 04 JAN 2018

NW-1, 07 DEC 2017 to 04 JAN 2018

MZULA FOUR DEPARTURE

SL-266 (FAA)

MISSOULA INTL (MSO)
MISSOULA, MONTANA

**TOP ALTITUDE:
ASSIGNED BY ATC**

TAKEOFF OBSTACLE NOTES

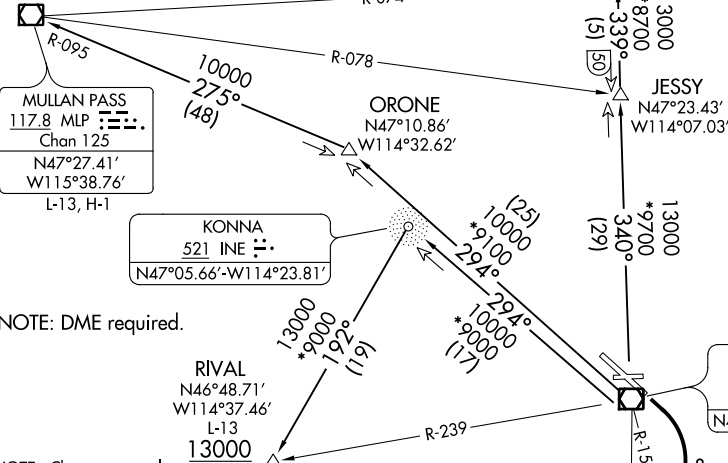
Rwy 11: Fence beginning 22' from DER, 487' right of centerline, up to 15' AGL/3215' MSL.

TAKEOFF MINIMUMS

Rwy 11: Standard with minimum climb of 400' per NM to 11000.

KALISPELL
113.2 FCA
Chan 79
N48°12.85'
W114°10.55'
L-13, H-1

ATIS 126.65
GND CON 121.9
MISSOULA TOWER* 118.4 377.175
SPOKANE DEP CON 124.9 298.95
SALT LAKE CITY CENTER 133.4 285.4



NOTE: DME required.

NOTE: Chart not to scale.

DEPARTURE ROUTE DESCRIPTION

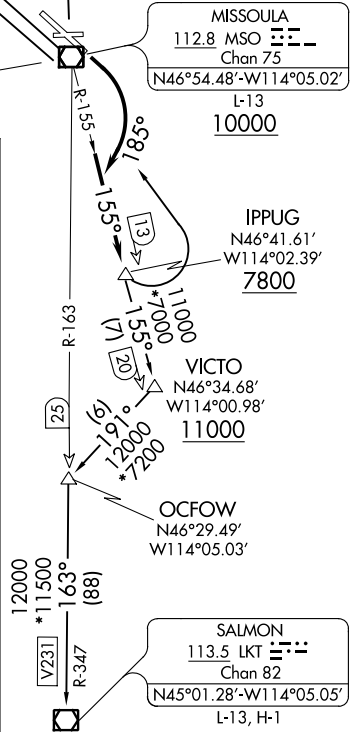
TAKEOFF RUNWAY 11: Climbing right turn heading 185° to intercept and proceed on MSO R-155 to cross IPPUG INT at/above 7800. Thence on transition or assigned route.

KALISPELL TRANSITION (MZULA4.FCA): From over IPPUG INT on MSO R-155, left turn to MSO VOR/DME, then on MSO R-340 to JESSY, then on MSO R-340 and FCA R-159 to FCA VOR/DME.

MISSOULA TRANSITION (MZULA4.MSO): From over IPPUG INT on MSO R-155, left turn to MSO VOR/DME.
MULLAN PASS TRANSITION (MZULA4.MLP): From over IPPUG INT on MSO R-155, left turn to MSO VOR/DME, then on MSO R-294 to ORONE, then on MLP R-095 to MLP VOR/DME.

RIVAL TRANSITION (MZULA4.RIVAL): From over IPPUG INT on MSO R-155, left turn to MSO VOR/DME, then on MSO R-294 to INE NDB, then on INE 192° bearing to RIVAL.

SALMON TRANSITION (MZULA4.LKT): From over IPPUG INT on MSO R-155 to VICTO, then on heading 191° to OCFOW, then on MSO R-163 and LKT R-347 to LKT VOR/DME.



MISSOULA, MONTANA
MISSOULA INTL (MSO)

NW-1, 07 DEC 2017 to 04 JAN 2018

NW-1, 07 DEC 2017 to 04 JAN 2018

MZULA FOUR DEPARTURE