

WAAS CH <b>50327</b> <b>W27A</b>	APP CRS <b>268°</b>	Rwy Idg TDZE Apt Elev	<b>4218</b> <b>1015</b> <b>1021</b>
--	------------------------	-----------------------------	---

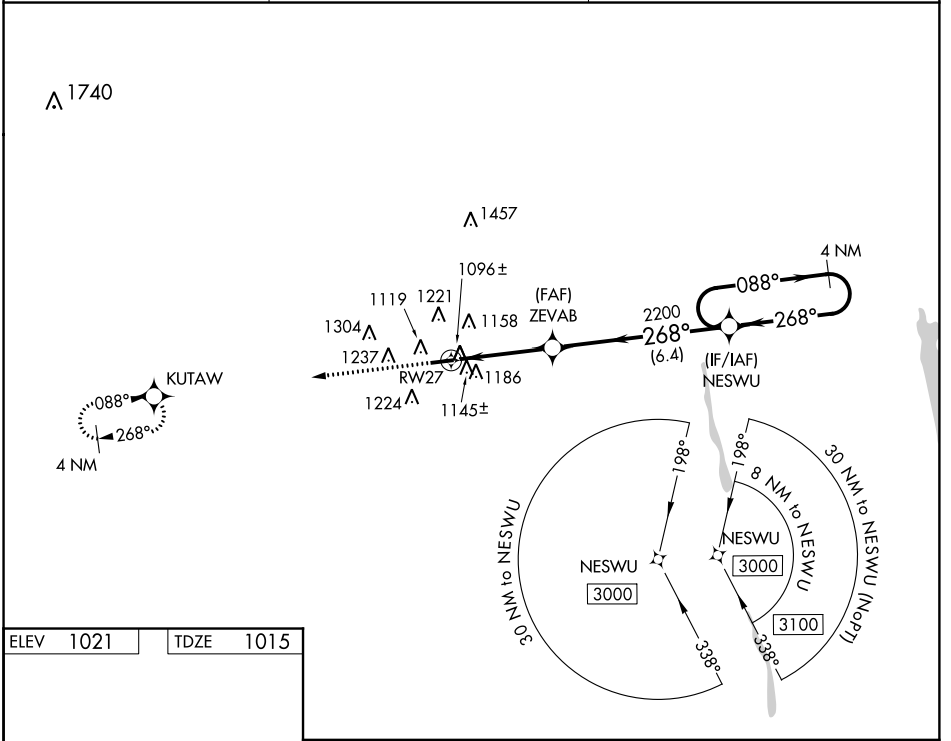
# RNAV (GPS) RWY 27

UNION COUNTY (MRT)

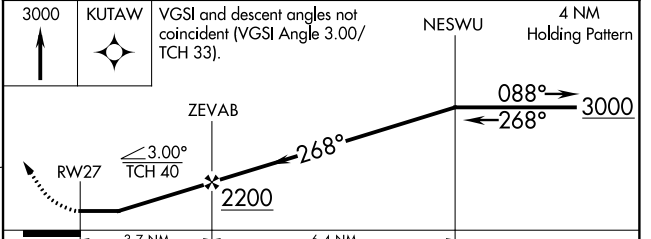
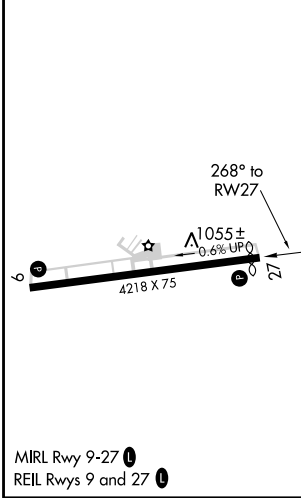
**⚠** Night landing: Rwy 27 NA. DME/DME RNP-0.3 NA. Helicopter visibility reduction below 1 SM NA. When local altimeter setting not received, use Port Columbus Intl altimeter setting and increase all MDA 100 feet, LP and LNAV Cat C and D visibility to 1 3/8 miles and Circling Cat C visibility to 1 3/4 miles.

MISSED APPROACH: Climb to 3000 direct KUTAW and hold.

AWOS-3 <b>119.275</b>	COLUMBUS APP CON <b>125.95 317.775</b>	UNICOM <b>122.8 (CTAF)</b>
--------------------------	---	-------------------------------



ELEV 1021	TDZE 1015
-----------	-----------



CATEGORY	A	B	C	D
LP MDA	1360-1 345 (400-1)			
LNAV MDA	1400-1	385 (400-1)	1400-1 3/8	385 (400-1 1/8)
CIRCLING	1520-1 499 (500-1)	1540-1 519 (600-1)	1540-1 1/2 519 (600-1 1/2)	1580-2 559 (600-2)

EC-2, 22 JUN 2017 to 20 JUL 2017

EC-2, 22 JUN 2017 to 20 JUL 2017

WAAS CH <b>72827</b> <b>W09A</b>	APP CRS <b>088°</b>	Rwy Idg TDZE Apt Elev	<b>4218</b> <b>1021</b> <b>1021</b>
--	------------------------	-----------------------------	---

# RNAV (GPS) RWY 9

UNION COUNTY (MRT)

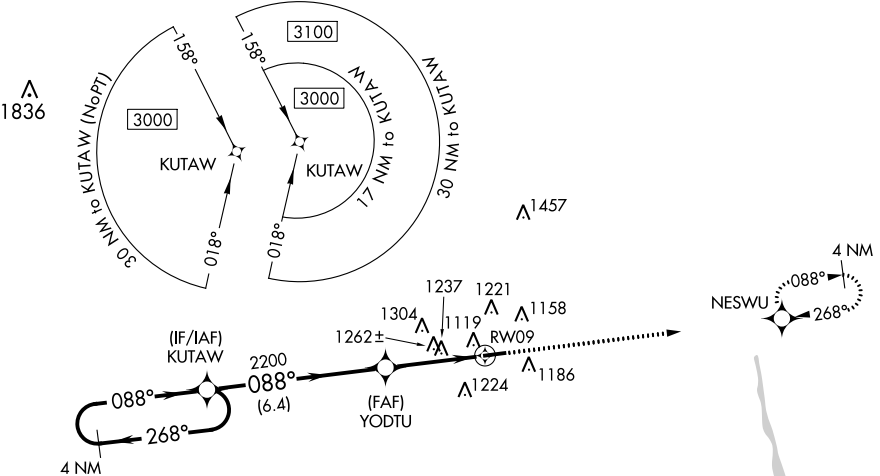
**▼** Night landing: Rwy 27 NA. Helicopter visibility reduction below 3/4 SM NA.  
**▲** DME/DME RNP-0.3 NA. When local altimeter setting not received, use Port Columbus Intl altimeter setting and increase all MDA 100 feet, LP Cats C and D visibility to 1 1/2 miles, LNAV Cats C and D and Circling Cat C visibility to 1 1/4 miles.

MISSED APPROACH: Climb to 3000 direct NESWU and hold.

AWOS-3  
**119.275**

COLUMBUS APP CON  
**125.95 317.775**

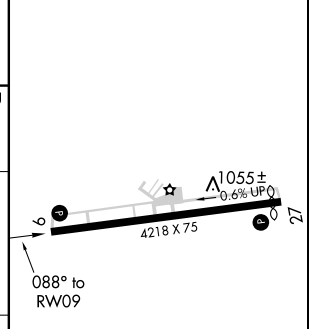
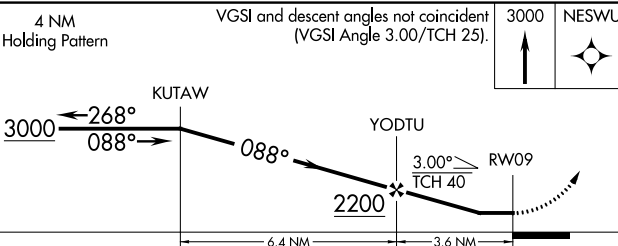
UNICOM  
**122.8 (CTAF)**



EC-2, 22 JUN 2017 to 20 JUL 2017

EC-2, 22 JUN 2017 to 20 JUL 2017

ELEV 1021	TDZE 1021
-----------	-----------



CATEGORY	A	B	C	D
LP MDA	1500-1	479 (500-1)	1500-1 3/8	479 (500-1 3/8)
LNAV MDA	1520-1	499 (500-1)	1520-1 3/8	499 (500-1 3/8)
CIRCLING	1520-1 499 (500-1)	1540-1 519 (600-1)	1540-1 1/2 519 (600-1 1/2)	1580-2 559 (600-2)

MIRL Rwy 9-27  
REIL Rwys 9 and 27