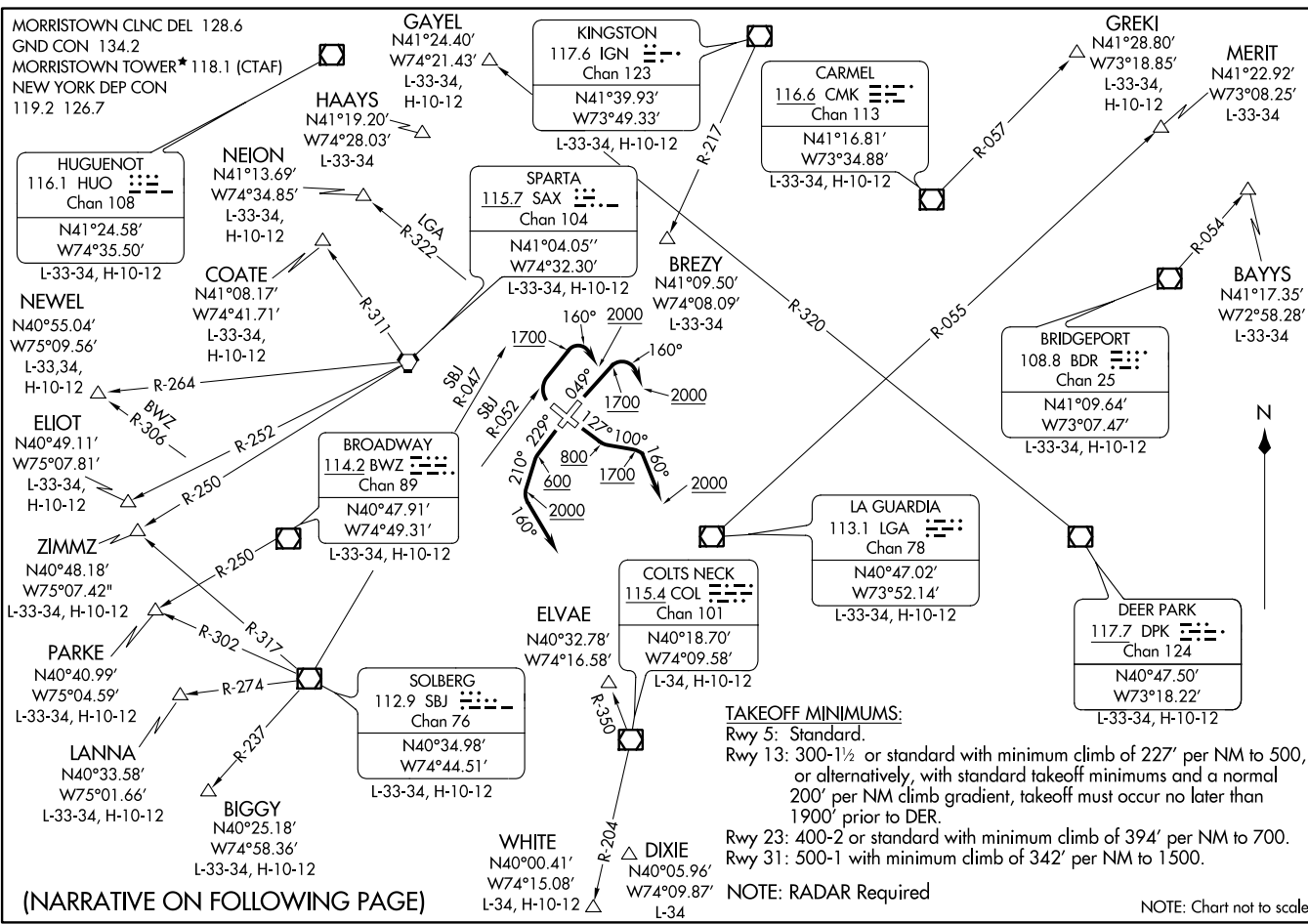


MORRISTOWN NEW JERSEY
 MORRISTOWN MUNI (MMU) 20OCT11
 MORRISTOWN NEW JERSEY
 MORRISTOWN MUNI (MNT)

(MMU6,MMU) 17117
 MORRISTOWN SIX DEPARTURE
 A1-931 (FAA)
 MORRISTOWN MUNI (MNT)
 MORRISTOWN, NEW JERSEY



(NARRATIVE ON FOLLOWING PAGE)

MORRISTOWN SIX DEPARTURE



DEPARTURE ROUTE DESCRIPTION

TAKEOFF Rwy 5: Climb heading 049° to 1700', then climbing right turn heading 160° to 2000', thence...

TAKEOFF Rwy 13: Climb heading 127° to 800', then climb heading 100° to 1700', then climb heading 160° to 2000', thence...

TAKEOFF Rwy 23: Climb heading 229° to 600', then climb heading 210° to 2000', then turn left heading 160°, thence...

TAKEOFF Rwy 31: Climbing right turn on SBJ R-052 to 1700, then climbing right turn heading 160° to 2000, thence...

...as per notes or vectors to assigned route/fix. Expect clearance to filed altitude/flight level ten (10) minutes after departure.

LOST COMMUNICATION: For aircraft proceeding to COATE, NEION, HAAYS, GAYEL, BREZY, if radio contact lost/not established with ATC, climb to 3000 feet after crossing SBJ R-047.

TAKEOFF OBSTACLES NOTES:

- Rwy 5: Trees beginning 16' from DER, 300' left/right of centerline, up to 87' AGL/286' MSL
- Rwy 13: Trees/power lines/bushes beginning 50' from DER, 32' left/right of centerline, up to 84' AGL/283' MSL.
Tank 1.2 NM from DER, 1,830' right of centerline, 135' AGL/395' MSL.
- Rwy 23: Trees/bldgs beginning 80' from DER, 48' left/right of centerline, up to 91' AGL/290' MSL.
- Rwy 31: Trees/power lines/bushes beginning 2' from DER, 6' left/right of centerline, up to 150' AGL/329' MSL.

- NOTE: BAYYS departures expect vectors to BDR/BDR R-054.
- NOTE: BIGGY departures expect vectors to SBJ/SBJ R-237.
- NOTE: BREZY departures expect vectors to IGN R-217 to BREZY.
- NOTE: COATE departures expect vectors to SAX/SAX R-311.
- NOTE: DIXIE departures expect vectors to COL R-350/COL/COL R-192 or ELVAE/COL
- NOTE: ELIOT departures expect vectors to SAX R-252. ELIOT may be accessed by all types of aircraft requesting a final altitude of 14,000 feet or 16,000 feet.
- NOTE: GAYEL departures expect vectors to DPK R-320.
- NOTE: HAAYS departures expect vectors to HUO.
- NOTE: LANNA departures expect vectors to SBJ/SBJ R-274.
- NOTE: MERIT departures expect vectors to LGA R-055.
- NOTE: NEION departures expect vectors to LGA R-322.
- NOTE: NEWEL departures expect vectors to SAX/SAX R-264. NEWEL may be accessed by turbojet aircraft only requesting a final altitude at or above flight level 180.
- NOTE: Rwy 23 PARKE departures expect vectors to BWZ R-250 or SBJ/SBJ R-302.
- NOTE: WHITE departures expect vectors to COL R-350/COL/COL R-204 or ELVAE/COL.
- NOTE: ZIMMZ departures expect vectors SBJ/SBJ R-317. ZIMMZ may be accessed by all types of aircraft requesting a final altitude at or above flight level 180.

NE-2: 17 AUG 2017 to 14 SEP 2017

NE-2: 17 AUG 2017 to 14 SEP 2017

MORRISTOWN SIX DEPARTURE