

# BITHO SEVEN ARRIVAL (BITHO.BITHO7)

AL-571 (FAA)

ORLANDO, FLORIDA

ORLANDO APP CON  
 128.37 338.2  
 ORLANDO INTL D-ATIS ARR  
 121.25

ORMOND BEACH  
 112.6 OMN  
 Chan 73  
 N29°18.20' - W81°06.76'  
 L-21-23-24, H-8

OCALA  
 113.7 OCF  
 Chan 84

ORLANDO  
 112.2 ORL  
 Chan 59

JESUP  
 N28°53.31'  
 W81°04.78'

BITHO  
 N28°37.86' - W81°03.56'

LAMMA  
 N29°00.87' - W81°05.38'  
**TURBOJET VERTICAL NAVIGATION  
 PLANNING INFORMATION**

Expect clearance to cross at 15000' landing Patrick AFB, Melbourne Intl, and Merritt Island.  
 Expect clearance to cross at 12000' landing Orlando Intl, Kissimmee Gateway, Space Coast Rgnl, Cape Canaveral AFS Skid Strip, and NASA Shuttle Landing Facility.  
 NOTE: Orlando Intl landing south: Expect clearance to cross at 250K IAS.

COZMO  
 N28°47.95' - W81°04.36'  
**TURBOJET VERTICAL NAVIGATION  
 PLANNING INFORMATION**

Expect clearance to cross at 10000' landing Orlando Intl Runway 18.

**TURBOJET VERTICAL NAVIGATION  
 PLANNING INFORMATION**  
 Expect clearance to cross at 8000' landing NASA Shuttle Landing Facility, Cape Canaveral AFS Skid Strip, Merritt Island, Patrick AFB, and Melbourne Intl.

ORLANDO INTL

KISSIMMEE GATEWAY

SPACE COAST RGNL

NASA SHUTTLE LANDING FACILITY

CAPE CANAVERAL AFS SKID STRIP

MERRITT ISLAND

PATRICK AFB

MELBOURNE INTL

NOTE: Chart not to scale.

From over OMN VORTAC via OMN R-176 to BITHO INT. Expect radar vectors to final approach course after BITHO INT.

# BITHO SEVEN ARRIVAL (BITHO.BITHO7)

ORLANDO, FLORIDA

SE-3, 22 JUN 2017 to 20 JUL 2017

SE-3, 22 JUN 2017 to 20 JUL 2017

(COSTR.COSTR3) 17117

# COSTR THREE ARRIVAL (RNAV)

AL-571 (FAA)

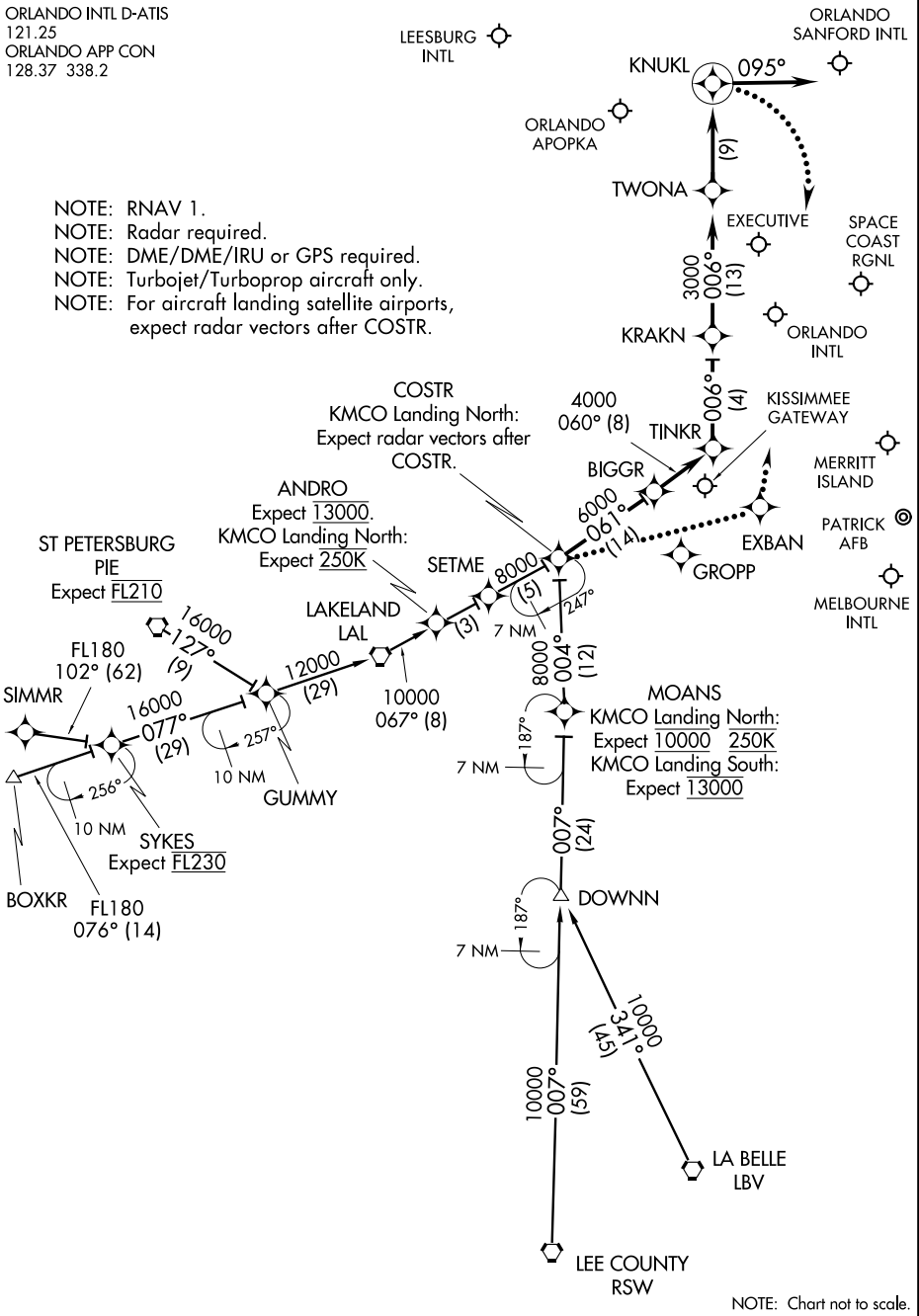
ORLANDO, FLORIDA

ORLANDO INTL D-ATIS  
121.25  
ORLANDO APP CON  
128.37 338.2

LEESBURG INTL

ORLANDO SANFORD INTL

- NOTE: RNAV 1.
- NOTE: Radar required.
- NOTE: DME/DME/IRU or GPS required.
- NOTE: Turbojet/Turboprop aircraft only.
- NOTE: For aircraft landing satellite airports, expect radar vectors after COSTR.



SE-3, 22 JUN 2017 to 20 JUL 2017

SE-3, 22 JUN 2017 to 20 JUL 2017

NOTE: Chart not to scale.

# COSTR THREE ARRIVAL (RNAV)

(COSTR.COSTR3) 29MAY14

ORLANDO, FLORIDA

ARRIVAL ROUTE DESCRIPTION

BOXKR TRANSITION (BOXKR.COSTR3):

LA BELLE TRANSITION (LBV.COSTR3):

LEE COUNTY TRANSITION (RSW.COSTR3):

SIMMR TRANSITION (SIMMR.COSTR3):

ST. PETERSBURG TRANSITION (PIE.COSTR3):

From over COSTR on track 061° to BIGGR, then as depicted to KNUKL, then on track 095°. Expect radar vectors.

LOST COMMUNICATIONS:

KMCO LANDING NORTH: Continue track to COSTR, then proceed direct to EXBAN, turn left to intercept the Rwy 36L final approach course, conduct approach.

KMCO LANDING SOUTH: Continue track to KNUKL, turn right to intercept the Rwy 18R final approach course, conduct approach.

SE-3, 22 JUN 2017 to 20 JUL 2017

SE-3, 22 JUN 2017 to 20 JUL 2017