

SI-246 (FAA)

MANCHESTER, NEW HAMPSHIRE

MANCHESTER, NEW HAMPSHIRE
MANCHESTER

ROZZE TWO ARRIVAL (RNAV)
(ROZZE,ROZZE2) 17AUG17

MANCHESTER, NEW HAMPSHIRE
MANCHESTER (MHT)

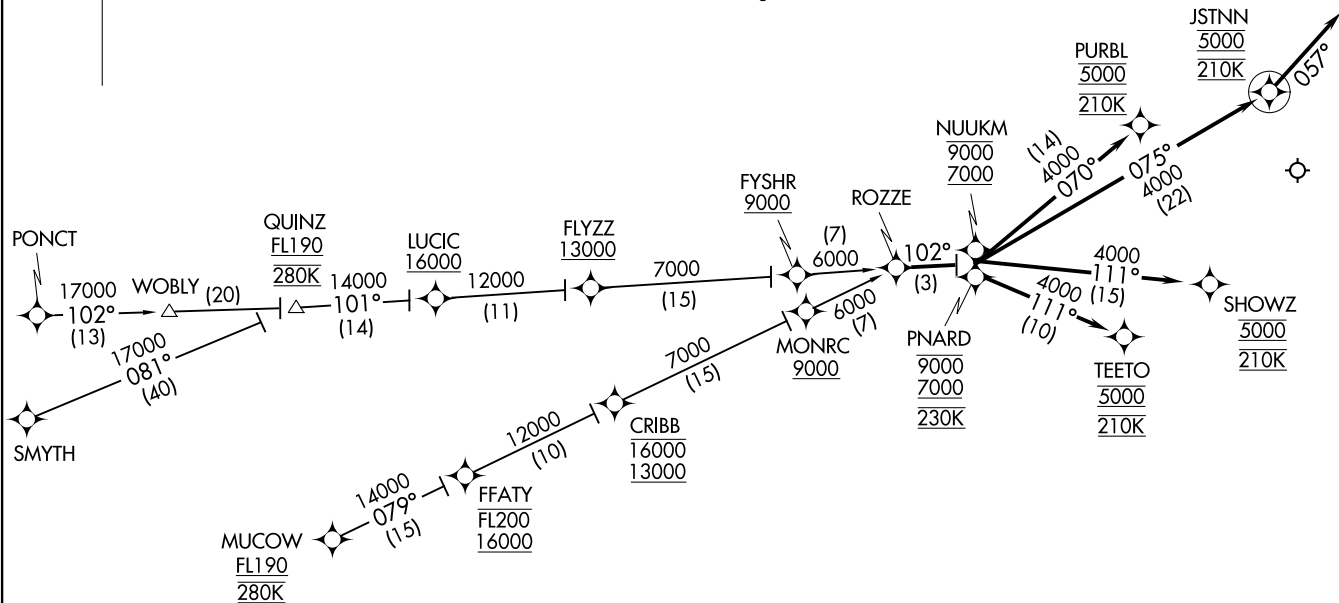
(ROZZE,ROZZE2) 17Z29
ROZZE TWO ARRIVAL (RNAV)

AL-246 (FAA)

MANCHESTER (MHT)
MANCHESTER, NEW HAMPSHIRE

BOSTON CENTER
135.32 360.6
BOSTON APP CON
124.9 269.075
MANCHESTER TOWER
121.3 239.025
MANCHESTER ATIS
119.55

NOTE: RADAR required.
NOTE: RNAV 1.
NOTE: DME/DME/IRU or GPS required.
NOTE: Turbojet aircraft only.
NOTE: MUCOW and CRIBB transitions are ATC assigned.



NOTE: Chart not to scale.

(NARRATIVE ON FOLLOWING PAGE)

ARRIVAL ROUTE DESCRIPTION

CRIBB TRANSITION (CRIBB.ROZZE2)

MUCOW TRANSITION (MUCOW.ROZZE2)

PONCT TRANSITION (PONCT.ROZZE2)

QUINZ TRANSITION (QUINZ.ROZZE2)

SMYTH TRANSITION (SMYTH.ROZZE2)

Landing Rwy 6: From ROZZE on track 102° to cross PNARD between 7000 and 9000 and at 230K, then on track 111° to cross TEETO at 5000 and at 210K. Expect ILS or LOC Rwy 6 or radar vectors to final approach course.

Landing Rwy 17: From ROZZE on track 102° to cross NUUKM between 7000 and 9000, then on track 070° to cross PURBL at 5000 and at 210K. Expect RNP approach or ILS or LOC/DME Rwy 17 or radar vectors to final approach course.

Landing Rwy 24: From ROZZE on track 102° to cross NUUKM between 7000 and 9000, then on track 075° to cross JSTNN at 5000 and at 210K, then on heading 057°. Expect radar vectors to final approach course.

Landing Rwy 35: From ROZZE on track 102° to cross NUUKM between 7000 and 9000, then on track 111° to cross SHOWZ at 5000 and at 210K. Expect RNP approach or ILS or LOC Rwy 35 or radar vectors to final approach course.

NE-1, 17 AUG 2017 to 14 SEP 2017

NE-1, 17 AUG 2017 to 14 SEP 2017