

DANEI TWO ARRIVAL
(DANEI.DANEI2) 09295

(DANEI.DANEI2) 09295
DANEI TWO ARRIVAL

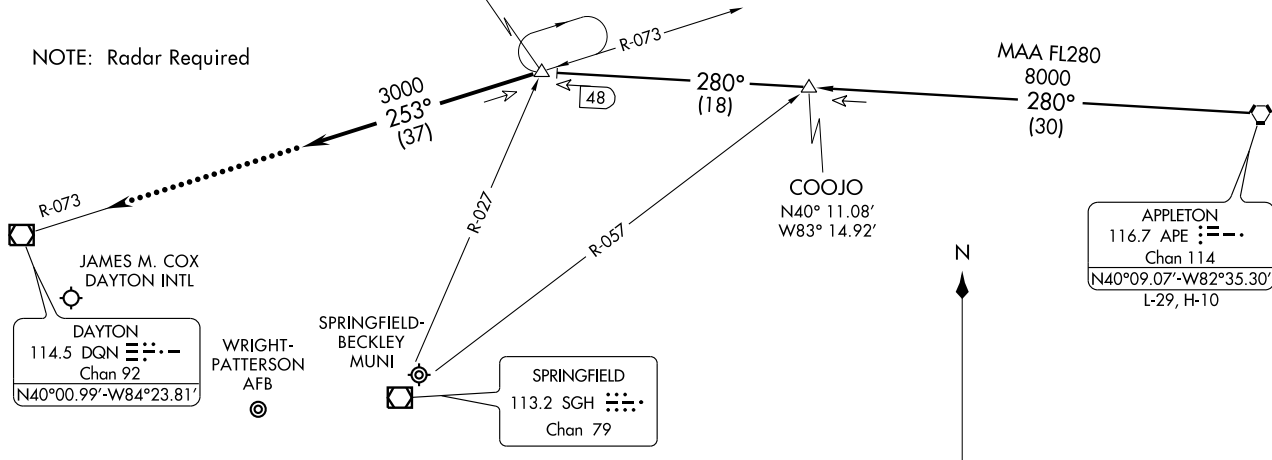
ST-107 (FAA)

DAYTON, OHIO

DAYTON APP CON
134.45 352.05 (181-359)
JAMES M COX ATIS 125.8

DANEI
N40°12.16'-W83°38.36'
VERTICAL NAVIGATION PLANNING
All aircraft expect clearance to cross
at 11,000' and 250 KTS

NOTE: Radar Required



JAMES M. COX
DAYTON INTL

DAYTON
114.5 DQN $\equiv \cdot \cdot \cdot -$
Chan 92
N40°00.99'-W84°23.81'

WRIGHT-
PATTERSON
AFB

SPRINGFIELD-
BECKLEY
MUNI

SPRINGFIELD
113.2 SGH $\cdot \cdot \cdot \cdot$
Chan 79

APPLETON
116.7 APE $\equiv \cdot \cdot \cdot$
Chan 114
N40°09.07'-W82°35.30'
L-29, H-10

APPLETON TRANSITION (APE.DANEI2): From over APE VORTAC via APE R-280 to DANEI INT. Thence

. . . . From over DANEI INT via heading 253°. Expect radar vectors to final approach course.

LOST COMMUNICATIONS:
In the event of lost communications: At DANEI INT, proceed direct DQN VOR/DME maintain 3000 feet until DQN VOR/DME.

NOTE: Chart not to scale.

DAYTON, OHIO