


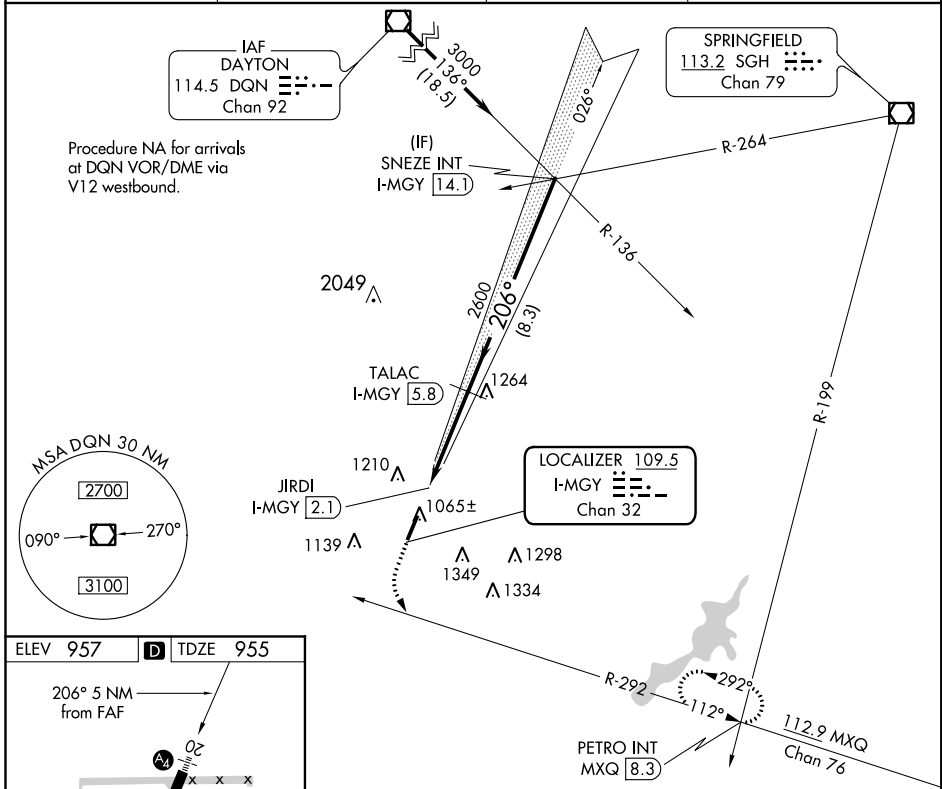
LOC/DME I-MGY 109.5 Chan 32	APP CRS 206°	Rwy Idg 4410 TDZE 955 Apt Elev 957
---	------------------------	---

LOC/DME RWY 20

DAYTON-WRIGHT BROTHERS (MGY)

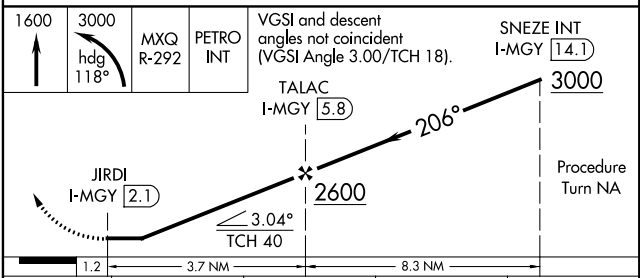
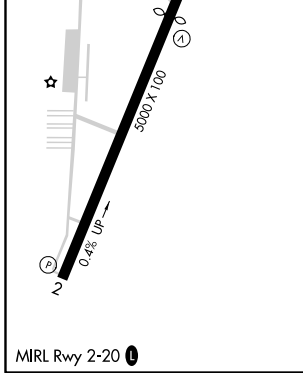
<p>NA Inoperative table does not apply. Visibility reduction by helicopters NA. If local altimeter setting not received, use James M Cox Dayton Intl altimeter setting and increase all MDAs 60 feet.</p>	<p>MALSF </p>	<p>MISSED APPROACH: Climb to 1600 then climbing left turn to 3000 via heading 118° and MXQ VOR/DME R-292 to PETRO INT/MXQ 8.3 DME and hold.</p>
--	--	--

<p>ASOS 118.375</p>	<p>COLUMBUS APP CON 118.85 269.275</p>	<p>CLNC DEL 119.4</p>	<p>UNICOM 122.8 (CTAF) 0</p>
---------------------------------------	--	---	--



EC-2, 12 OCT 2017 to 09 NOV 2017

EC-2, 12 OCT 2017 to 09 NOV 2017



CATEGORY	A	B	C	D
S-20		1320-1½	365 (400-1½)	
CIRCLING	1480-1½	523 (600-1½)	1520-1½ 563 (600-1½)	1660-2¼ 703 (800-2¼)

LOM MW 223	APP CRS 085°	Rwy Idg TDZE Apt Elev	N/A N/A 957
----------------------	------------------------	-----------------------------	--

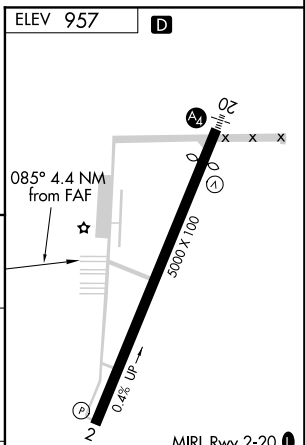
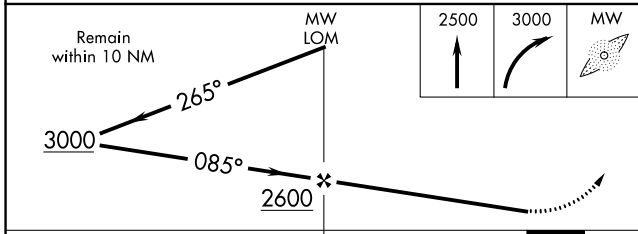
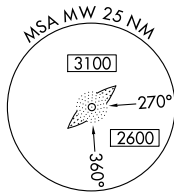
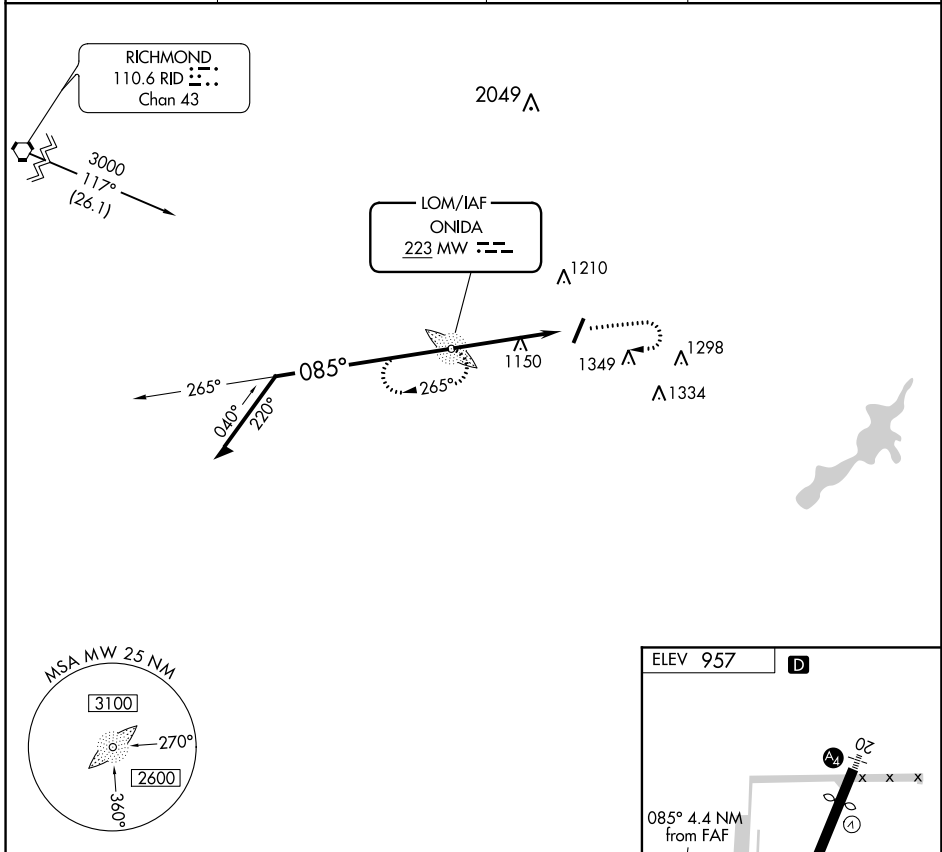
NDB-A

DAYTON-WRIGHT BROTHERS (MGY)

NA If local altimeter setting not received, use James M Cox Dayton Intl altimeter setting and increase all MDAs 60 feet.

MISSED APPROACH: Climb to 2500, then climbing right turn to 3000 direct MW LOM and hold.

ASOS 118.375	COLUMBUS APP CON 118.85 269.275	CLNC DEL 119.4	UNICOM 122.8 (CTAF) D
------------------------	---	--------------------------	--



CATEGORY	A	B	C	D	FAF to MAP 4.4 NM					
CIRCLING	1480-1	523 (600-1)	1520-1½ 563 (600-1½)	1660-2¼ 703 (800-2¼)	Knots	60	90	120	150	180
					Min:Sec	4:24	2:56	2:12	1:46	1:28

NDB-A

WAAS CH 45801 W02A	APP CRS 026°	Rwy Idg TDZE Apt Elev	5000 949 957
--	------------------------	-----------------------------	---

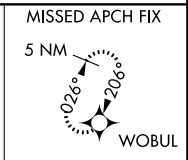
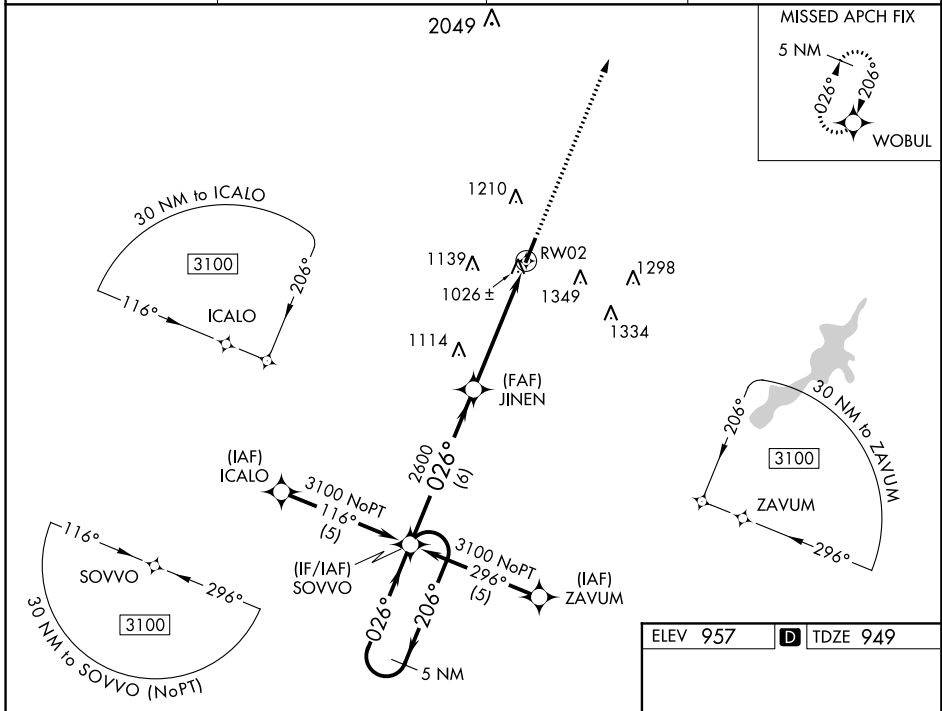
RNAV (GPS) RWY 2

DAYTON-WRIGHT BROTHERS (MGY)

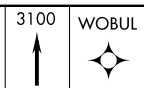
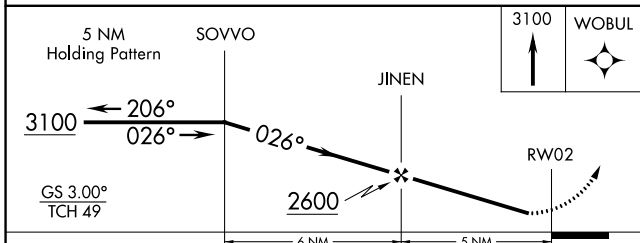
Baro-VNAV NA when using James M Cox Dayton Intl altimeter setting. For uncompensated Baro-VNAV systems, LNAV/VNAV NA below -16°C (4°F) or above 47°C (116°F). DME/DME RNP-0.3 NA. Visibility reduction for helicopters NA. If local altimeter setting not received, use James M Cox Dayton Intl altimeter setting and increase all DAs/MDAs 60 feet.

MISSED APPROACH:
Climb to 3100 direct WOBUL and hold.

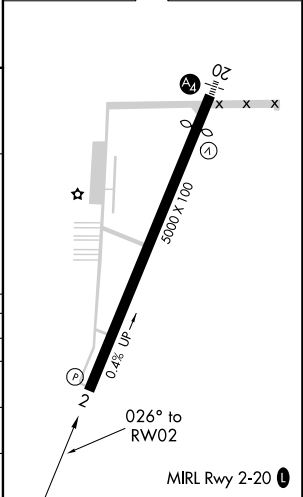
ASOS 118.375	COLUMBUS APP CON 118.85 269.275	CLNC DEL 119.4	UNICOM 122.8 (CTAF) U
------------------------	---	--------------------------	--



ELEV 957	D TDZE 949
----------	-------------------



CATEGORY	A	B	C	D
LPV DA		1214-1	265 (300-1)	
LNAV/VNAV DA		1299-1¼	350 (400-1½)	
LNAV MDA	1420-1	471 (500-1)	1420-1¼ 471 (500-1½)	1420-1½ 471 (500-1½)
CIRCLING	1480-1¼	523 (600-1½)	1520-1½ 563 (600-1½)	1660-2¼ 703 (800-2¼)



EC-2, 12 OCT 2017 to 09 NOV 2017

EC-2, 12 OCT 2017 to 09 NOV 2017

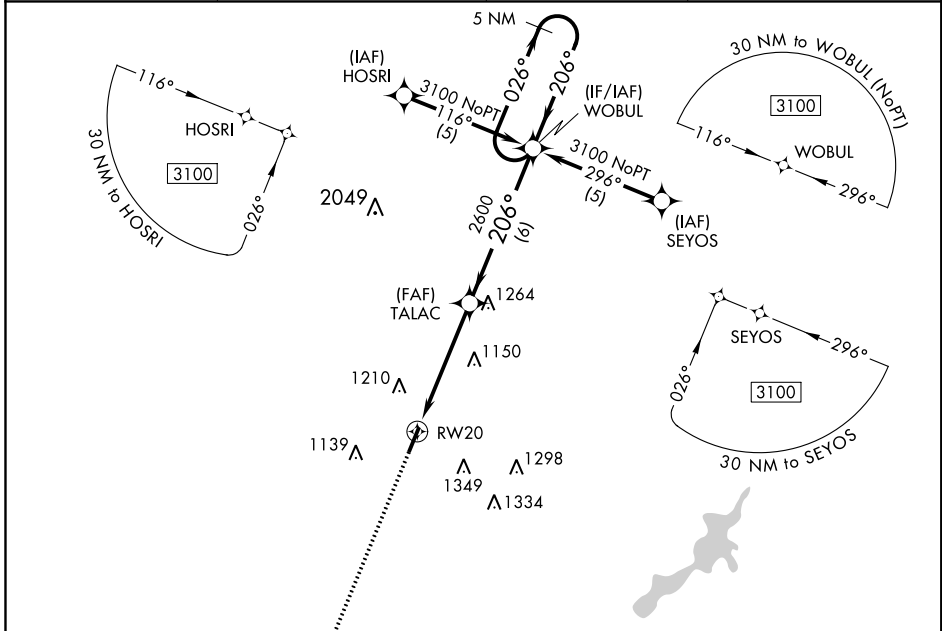
WAAS CH 93601 W20A	APP CRS 206°	Rwy Idg TDZE Apt Elev	4410 955 957
--	------------------------	-----------------------------	---

RNAV (GPS) RWY 20

DAYTON-WRIGHT BROTHERS (MGY)

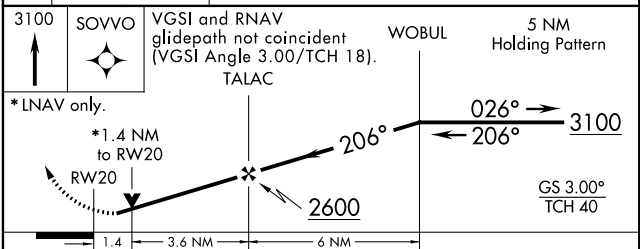
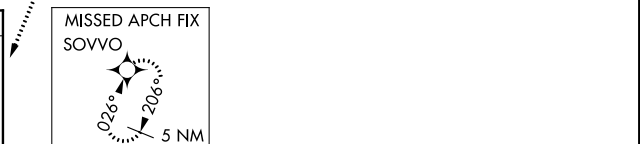
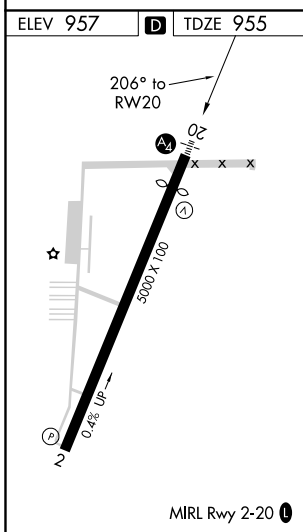
<p>▼ DME/DME RNP-0.3 NA. Inoperative table does not apply. If local altimeter setting not received, use James M Cox Dayton Intl and increase all DAs/MDAs 60 feet. Visibility reduction for helicopters NA. VDP NA when using James M Cox Dayton Intl altimeter setting.</p>	<p>MALS</p>	<p>MISSED APPROACH: Climb to 3100 direct SOVVO and hold.</p>
---	--------------------	---

ASOS 118.375	COLUMBUS APP CON 118.85 269.275	CLNC DEL 119.4	UNICOM 122.8 (CTAF) 0
------------------------	---	--------------------------	---------------------------------



EC-2, 12 OCT 2017 to 09 NOV 2017

EC-2, 12 OCT 2017 to 09 NOV 2017



CATEGORY	A	B	C	D
LPV DA	1294-1¼ 339 (400-1¼)			
LNAV MDA	1440-1	485 (500-1)	1440-1½ 485 (500-1½)	1440-1½ 485 (500-1½)
CIRCLING	1480-1¼	523 (600-1¼)	1520-1½ 563 (600-1½)	1660-2¼ 703 (800-2¼)