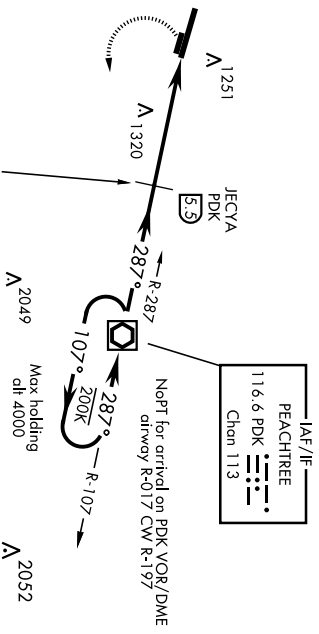


MARIETTA, GEORGIA

COPTER VOR RWY 29

1 5176

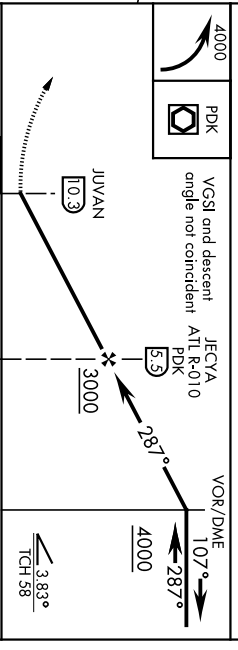
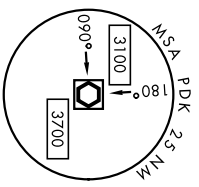
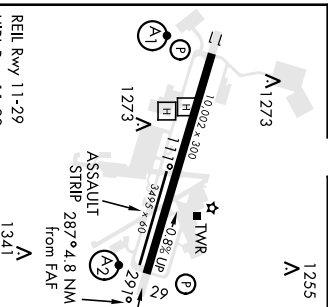
VOR/DME PDK 116.6 Chon 113	APCH CRS 287°	Rwy Idg 10,002 TDZE 1014 Arpt Elev 1068	AL-959 [USAF]	DOBBINS ARB (KMGE)							
<table border="1"> <tr> <td>ATIS ★ 269.5</td> <td>ATLANTA APP CON 121.0 268.7</td> <td>DOBBINS TOWER ★ 120.75 370.875</td> <td>GND CON 125.3 275.8</td> <td>ASR</td> </tr> </table>		ATIS ★ 269.5	ATLANTA APP CON 121.0 268.7	DOBBINS TOWER ★ 120.75 370.875	GND CON 125.3 275.8	ASR	<table border="1"> <tr> <td>SAIS</td> <td>MISSED APPROACH: Climbing left turn to 4000 direct PDK VOR/DME and hold.</td> </tr> </table>			SAIS	MISSED APPROACH: Climbing left turn to 4000 direct PDK VOR/DME and hold.
ATIS ★ 269.5	ATLANTA APP CON 121.0 268.7	DOBBINS TOWER ★ 120.75 370.875	GND CON 125.3 275.8	ASR							
SAIS	MISSED APPROACH: Climbing left turn to 4000 direct PDK VOR/DME and hold.										



NOT FOR CIVIL USE

EMERG SAFE ALT 100 NM 7700

ELEV 1068	TDZE 1014
-----------	-----------



FAF to MAP 4.8 NM					
Knots	45	60	75	90	105
Min/Sec	6.24	4.48	3.50	3.12	2.44
CATEGORY	H-29				
COPTR	1580/20				566 (600-3%)

MARIETTA, GEORGIA DOBBINS ARB (KMGE)
 And# 6 05FEB15 33° 55' N-84° 31' W
COPTER VOR RWY 29

MARIETTA, GEORGIA

ILS or LOC Rwy 11 1 5176

LOC I-DR	APCH CRS	Rwy Idg	10,002
109.7	109°	TDZE	1068
		Appt Elev	1068

AL-959 [USAF]

DOBBINS ARB (KMGE)

▼ * When AIS Inop, increase RVR to 55 and vis to 1 mile.
 ** When AIS Inop, increase CAT AB RVR to 55 and vis to 1 mile, CAT CDE vis to 1½ miles.

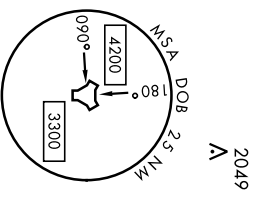
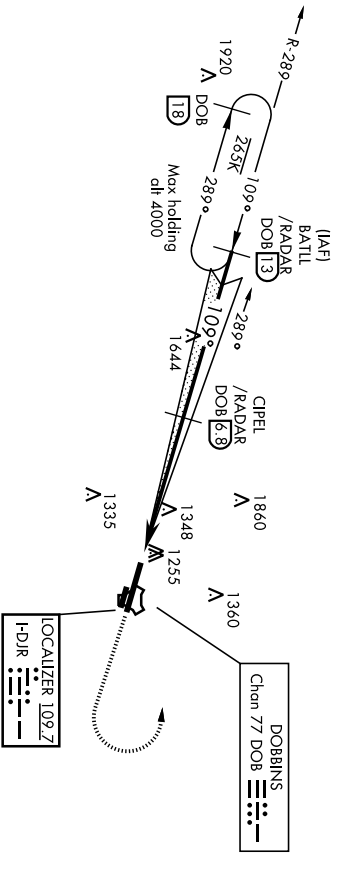


† MISSED APPROACH: Climb to 2000 track 109°, then climbing left turn to 3000, intercept the DOB R-289 to BATTIL and hold.

AIS *	ATLANTA APP CON	DOBBINS TOWER *
269.5	121.0 268.7	120.75 370.875

GND CON	ASR
125.3 275.8	

*** Circling not authorized N of Rwy 11-29 for CAT DE aircraft.
 † Missed approach requires use of RNAV or ATC RADAR monitoring.

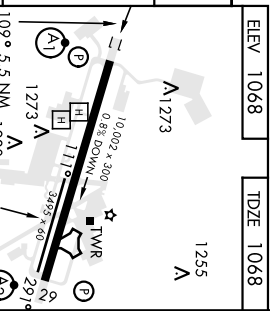
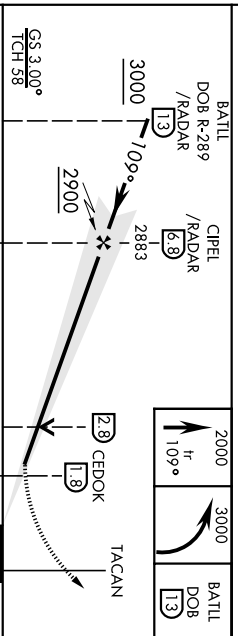


SE-4, 27 APR 2017 to 25 MAY 2017

SE-4, 27 APR 2017 to 25 MAY 2017

DME REQUIRED

EMERG SAFE ALT 100 NM 7700



CATEGORY	A	B	C	D	E
	1401/40	333	(400-¾)		
S-I OC 11**	1600/40 532 (600-¾)	1600/55	532	(600-1)	
*** CIRCLING	1660-1	1680-1¾	1680-2	1680-2½	
	592 (600-1)	612 (700-1¾)	612 (700-2)	612 (700-2½)	

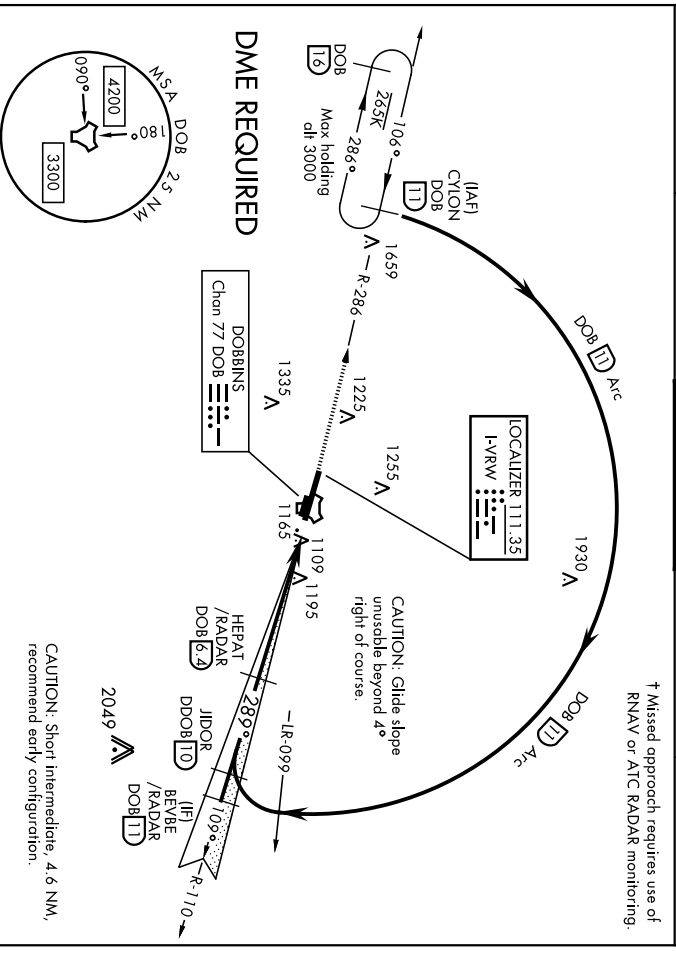
Knots	60	90	120	150	180
	5:00	3:20	2:30	2:00	1:40

MARIETTA, GEORGIA 33°55'N-84°31'W
 Amhd 4 05FEB15 DOBBINS ARB (KMGE)
ILS or LOC Rwy 11

LOC I-RVW 111.35	APCH CRS 289°	Rwy Idg 10,002 TDZE 1014 Arpt Elev 1068	AL-959 [USAF]	SALS 	† MISSED APPROACH: Climb to 3000 via DOB R-286 to CYNON and hold.
ATIS * 269.5	ATLANTA APP CON 121.0 268.7	DOBBINS TOWER * 120.75 370.875	GND CON 125.3 275.8	ASR	DOBBINS ARB (KMGE)

▼ * When ALS inop, increase CAT AB RVR to 55 and vis to 1 mile, CAT CDE vis to 1 3/8 miles.
 ** Circling not authorized N of Rwy 11-29 for CAT DE aircraft. Circling to assault strip not authorized.

† Missed approach requires use of RNAV or ATC RADAR monitoring.



EMERG SAFE ALT 100 NM NM 7700

3000 DOB R-286	CYNON DOB TD	JIDOR R-110 TD	BEVBE R-110 TD	CYNON R-286 TD	ELEV 1068	TDZE 1014
<p>TACAN</p> <p>HIDIT [B] 2933 HEPAT [6.2] /RADAR 3000 GS 3.00° TCH 39</p> <p>5.5 NM ← 5.5 NM →</p>		<p>REIL Rwy 11-29 HIRL Rwy 11-29</p> <p>FAF to MAP 5.5 NM</p> <p>10,002 x 300 4.88 up 3,493 x 60 11.47 289° 6 NM from FAF</p> <p>ASSAULT STRIP</p>		<p>1255 A</p> <p>2049</p>		
CATEGORY	A	B	C	D	E	
SLS 29	121.4/40		200	1200-3/4		
S-LOC 29*	1500/40	486 (500-3/4)	1500/60	486	(500-1 1/8)	
CIRCLING **	1660-1	592 (600-1)	1680-1 3/4	612 (700-1 3/4)	1680-2	612 (700-2)
					1680-2 1/2	612 (700-2 1/4)
					Knots	60 90 120 150 180
					Min:Sec	5:30 3:40 2:45 2:12 1:50

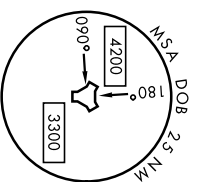
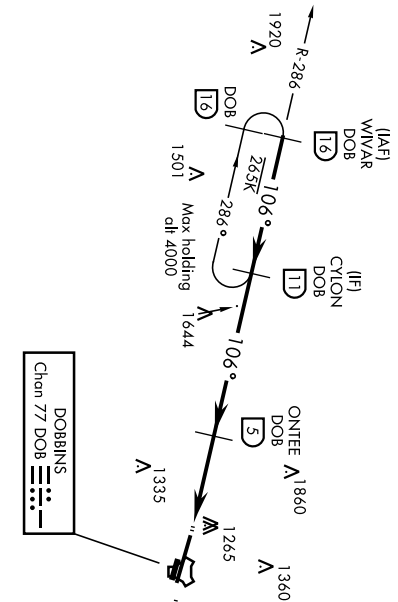
MARIETTA, GEORGIA

TACAN Rwy 11 15176

TACAN DOB Chan 77	APCH CRS 106°	Rwy Idg 10,002 TDZE 1068 Arpt Elev 1068	AL-959 [USAF]	ALST-1 [A1]	DOBBINS ARB (KMGE)
<p>▼ * When ALS inop, increase CAT AB RVR to 55 and vis to 1 mile, CAT CDE vis to 1½ miles.</p>			<p>† MISSED APPROACH: Climb to 2000 on track 106°, then climbing left turn to 3000, intercept DOB R-286 to CYLON and hold.</p>		

ATIS * 269.5	ATLANTA APP CON 121.0 268.7	DOBBINS TOWER * 120.75 370.875	GND CON 125.3 275.8	ASR
--------------	-----------------------------	--------------------------------	---------------------	-----

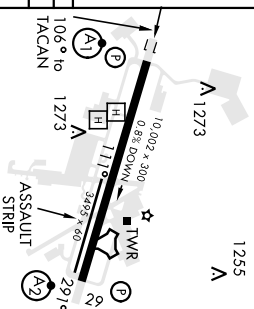
** Circling not authorized N of Rwy 11-29 for CAT D,E aircraft.
 † Missed approach requires use of RNAV or ATC RADAR monitoring.



EMERG SAFE ALT 100 NM 7700

WIVAR R-286	CYLON DOB	2000	3000	CYLON DOB	ELEV 1068	TDZE 1068
3000	106°	106°	106°	(11)		
3000	106°	2300		(5)		
2.97°	TCH 56	3.2 NM	5 NM	(2, 9)		
				TACAN		

CATEGORY	A	B	C	D	E		
S-11*	1600/40 532 (600-¾)	1600/55 532 (600-1)	1680-1¾ 612 (700-1¾)	1680-2 612 (700-2)	1680-2¼ 612 (700-2¼)		
** CIRCLING	1660-1 592 (600-1)						



MARIETTA, GEORGIA DOBBINS ARB (KMGE)
 Amhd 5 05FEB15 33°55'N-84°31'W
 TACAN Rwy 11

MARIETTA, GEORGIA

TACAN RWY 29

15176

TACAN DOB Chan 77	APCH CRS 291°	Rwy Idg TDZE 1014	Appt Elev 1068
----------------------	-------------------------	-------------------------	--------------------------

AL-959 [USAF]

DOBBIENS ARB (KMGE)

▼ * When ALS inop, increase CAT AB RVR to 55 and vis to 1 mile.
 ** Circling not authorized N of Rwy 11-29 for CAT DE aircraft. Circling to assault strip not authorized.

SAIS
A2

† MISSED APPROACH: Climb to 3000 via DOB R-286 to CYION and hold.

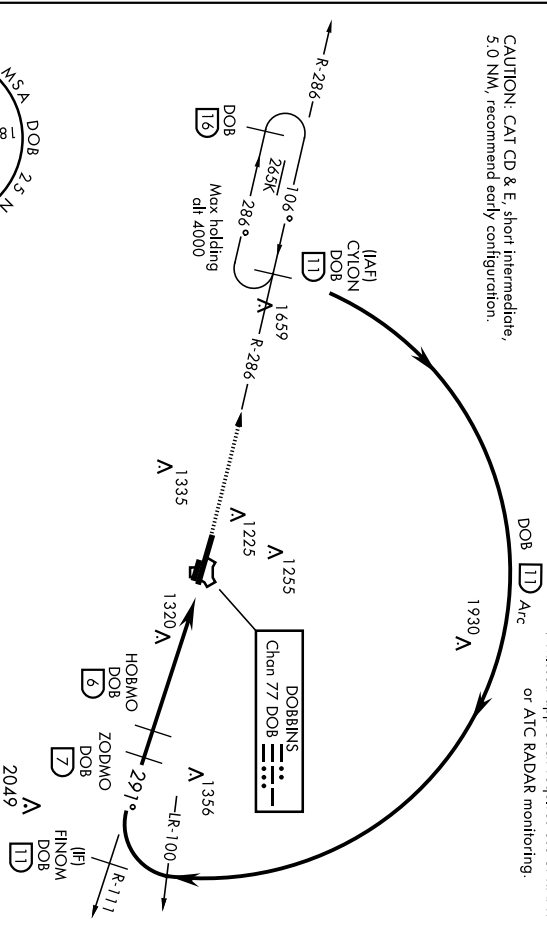
ATIS * 269.5	ATLANTA APP CON 121.0 268.7	DOBBIENS TOWER * 120.75 370.875
------------------------	---------------------------------------	-------------------------------------------

GND CON 125.3 275.8	ASR
-------------------------------	-----

CAUTION: CAT CD & E, short intermediate, 5.0 NM, recommend early configuration.

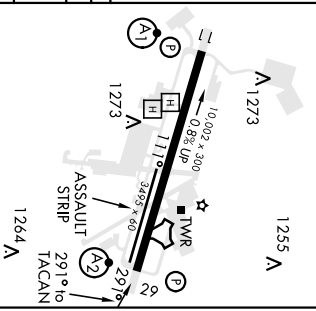
† Missed approach requires use of RNAV or ATC RADAR monitoring.

SE-4, 27 APR 2017 to 25 MAY 2017



EMERG SAFE ALT 100 NM 7700

3000 DOB R-286	CYION DOB 11	Angle and Descent VGS1 and coincident	FINOM R-111	CYION R-286	ELEV 1068	TDZE 1014
TACAN		ACUVI 21	3200	4000	1255 A	
ACUVI 9		3500	4000	4000		
HOBMO 6		ZODMO 11	4000	4000		
TCH 58		Arc 11				
CATEGORY		A	B	C	D	E
S-29 *		1380/40	566 (600-¾)	1580-1¾	566 (600-1¾)	
CIRCLING **		1660-1	592 (600-1)	1680-1¾ 612 (700-1¾)	1680-2 612 (700-2)	1680-2¼ 612 (700-2¼)



MARIETTA, GEORGIA
Amhd 5 05FEB15

33°55'N-84°31'W

DOBBIENS ARB (KMGE) TACAN RWY 29

SE-4, 27 APR 2017 to 25 MAY 2017