

(AWSON.AWSON2) 13122  
**AWSON TWO ARRIVAL**

ST-469 (FAA)

ATLANTA, GEORGIA

DEKALB-PEACHTREE ATIS  
 128.4  
 FULTON COUNTY ATIS  
 120.175  
 DOBBINS ARB ATIS ★  
 269.5  
 ATLANTA APP CON  
 126.975 239.275

**VOLUNTEER**  
 116.4 VVX  
 Chan 111  
 N35°54.29' - W83°53.68'  
 L-25, H-9-12

**SNOWBIRD**  
 108.8 SOT  
 Chan 25  
 N35°47.41' - W83°03.14'  
 L-25, H-9-12

**SUGARLOAF MOUNTAIN**  
 112.2 SUG  
 Chan 59  
 N35°24.39' - W82°16.12'  
 L-25

**CERAY**  
 N35°00.18' - W83°42.14'

**HARRIS**  
 109.8 HRS  
 Chan 35

**FOOTHILLS**  
 113.4 ODF  
 Chan 81  
 N34°41.75' - W83°17.86'  
 L-25, H-9-12

**AWSON**  
 N34°28.82' - W83°59.06'

**DEHAN**  
 N34°19.00' - W84°04.30'  
 NAVIGATIONAL PLANNING  
 INFORMATION  
 Expect 8000

**DLUTH**  
 N34°05.26' - W84°11.61'

**ELECTRIC CITY**  
 108.6 ELW  
 Chan 23

CARTERSVILLE  
 PAULDING NORTHWEST ATLANTA  
 DOBBINS ARB  
 FULTON COUNTY AIRPORT-BROWN FIELD  
 WEST GEORGIA RGNL-O.V. GRAY FIELD

COBB COUNTY-McCOLLUM FIELD

GWINNETT COUNTY-BRISCOE FIELD

ATLANTA  
 116.9 ATL  
 Chan 116

MONROE-WALTON COUNTY

NEWNAN COWETA COUNTY  
 ATLANTA RGNL FALCON FIELD

ATLANTA SOUTH RGNL

GRIFFIN-SPALDING COUNTY

NOTE: DME Required.  
 NOTE: RADAR required.  
 NOTE: This procedure applicable to turbojet and turboprop aircraft.

NOTE: Chart not to scale.

(NARRATIVE ON FOLLOWING PAGE)

SE-4, 05 MAR 2015 to 02 APR 2015

SE-4, 05 MAR 2015 to 02 APR 2015

**AWSON TWO ARRIVAL**  
 (AWSON.AWSON2) 13122

ATLANTA, GEORGIA

ARRIVAL ROUTE DESCRIPTION

CERAY TRANSITION (CERAY.AWSON2): From over CERAY via ATL R-029 to AWSON INT. Thence. . . .

FOOTHILLS TRANSITION (ODF.AWSON2): From over ODF VORTAC via ODF R-249 and ATL R-029 to AWSON INT. Thence. . . .

SNOWBIRD TRANSITION (SOT.AWSON2): From over SOT VORTAC via SOT R-218 to CERAY, then via ATL R-029 to AWSON INT. Thence. . . .

SUGARLOAF MOUNTAIN TRANSITION (SUG.AWSON2): From over SUG VORTAC via SUG R-253 to CERAY, then via ATL R-029 to AWSON INT. Thence. . . .

VOLUNTEER TRANSITION (VXV.AWSON2): From over VXV VORTAC via VXV R-173 to CERAY, then via ATL R-029 to AWSON INT. Thence. . . .

. . . .From over AWSON INT/ATL 56 DME via ATL R-029 to DLUTH/ATL 30 DME. Expect radar vectors to final approach course after DEHAN/ATL 45 DME.

SE-4, 05 MAR 2015 to 02 APR 2015

SE-4, 05 MAR 2015 to 02 APR 2015

BUNNI THREE ARRIVAL  
(BUNNI.BUNNI3) 14205

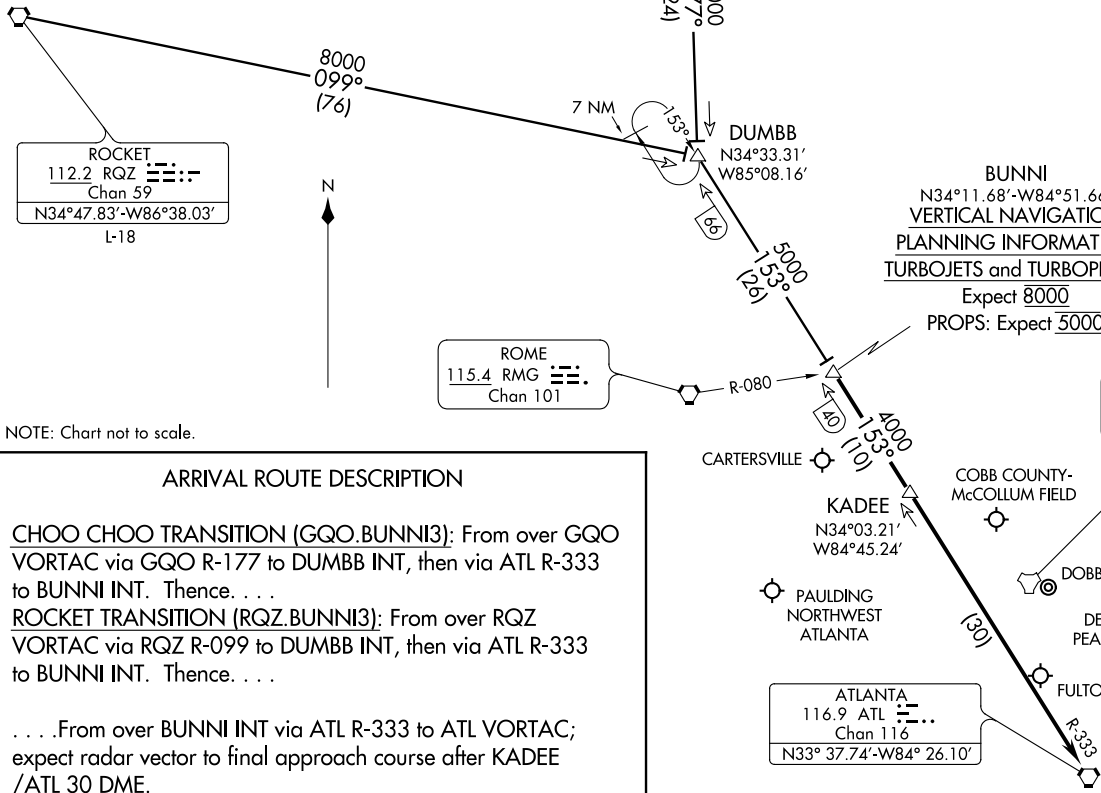
(BUNNI.BUNNI3) 14205  
BUNNI THREE ARRIVAL

ST-469 (FAA)

ATLANTA, GEORGIA

DEKALB-PEACHTREE ATIS 128.4  
FULTON COUNTY ATIS 120.175  
DOBBINS ARB ATIS ★ 269.5  
ATLANTA APP CON 121.0 268.7

NOTE: DME and RADAR required.



NOTE: Chart not to scale.

ARRIVAL ROUTE DESCRIPTION

CHOO CHOO TRANSITION (GQO.BUNNI3): From over GQO VORTAC via GQO R-177 to DUMBB INT, then via ATL R-333 to BUNNI INT. Thence. . .

ROCKET TRANSITION (RQZ.BUNNI3): From over RQZ VORTAC via RQZ R-099 to DUMBB INT, then via ATL R-333 to BUNNI INT. Thence. . .

. . . From over BUNNI INT via ATL R-333 to ATL VORTAC; expect radar vector to final approach course after KADEE /ATL 30 DME.

CHOO CHOO  
115.8 GQO  
Chan 105  
N34°57.68'-W85°09.20'  
L-25, H-9-12

ROCKET  
112.2 RQZ  
Chan 59  
N34°47.83'-W86°38.03'  
L-18

ROME  
115.4 RMG  
Chan 101

ATLANTA  
116.9 ATL  
Chan 116  
N33° 37.74'-W84° 26.10'

BUNNI  
N34°11.68'-W84°51.66'  
VERTICAL NAVIGATION  
PLANNING INFORMATION  
TURBOJETS and TURBOPROPS  
Expect 8000  
PROPS: Expect 5000

DOBBINS  
DOB  
Chan 77

# DIFFI TWO ARRIVAL

ST-469 (FAA)

ATLANTA, GEORGIA

DEKALB-PEACHTREE ATIS  
128.4  
FULTON COUNTY ATIS  
120.175  
DOBBINS ARB ATIS ★  
269.5  
ATLANTA APP CON  
119.8 354.125

ROME  
115.4 RMG  
Chan 101

CARTERSVILLE

CHEROKEE COUNTY

LEE GILMER MEMORIAL

COBB COUNTY-McCOLLUM FIELD

GWINNETT COUNTY-BRISCOE FIELD

PAULDING NORTHWEST ATLANTA

DOBBINS ARB

DEKALB-PEACHTREE

DIFFI  
N33°48.86'  
W85°04.10'

TIINI

N33°41.90' - W85°03.08'  
VERTICAL NAVIGATION  
PLANNING INFORMATION

Expect 5000.

352°

(17)

352°

(5)

TEMPO  
N33°36.68'  
W85°02.32'

310°

(11)

NANNC  
N33°23.32'  
W85°06.32'

310°

(12)

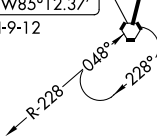
(1)

NOTE: DME required from LGC VORTAC to NANNC.  
NOTE: Radar required.

BUZZ

N33°16.66' - W85°08.30'  
VERTICAL NAVIGATION  
PLANNING INFORMATION  
TURBOJETS: Expect 11000.  
TURBOPROPS: Expect 7000.

LAGRANGE  
115.6 LGC  
Chan 103  
N33°02.95' - W85°12.37'  
L-18, H-9-12



NOTE: Chart not to scale.

## ARRIVAL ROUTE DESCRIPTION

From LGC VORTAC via R-013 to TEMPO INT/LGC 35 DME, then via RMG VORTAC R-172 to DIFFI INT/RMG 21 DME. Expect radar vectors.

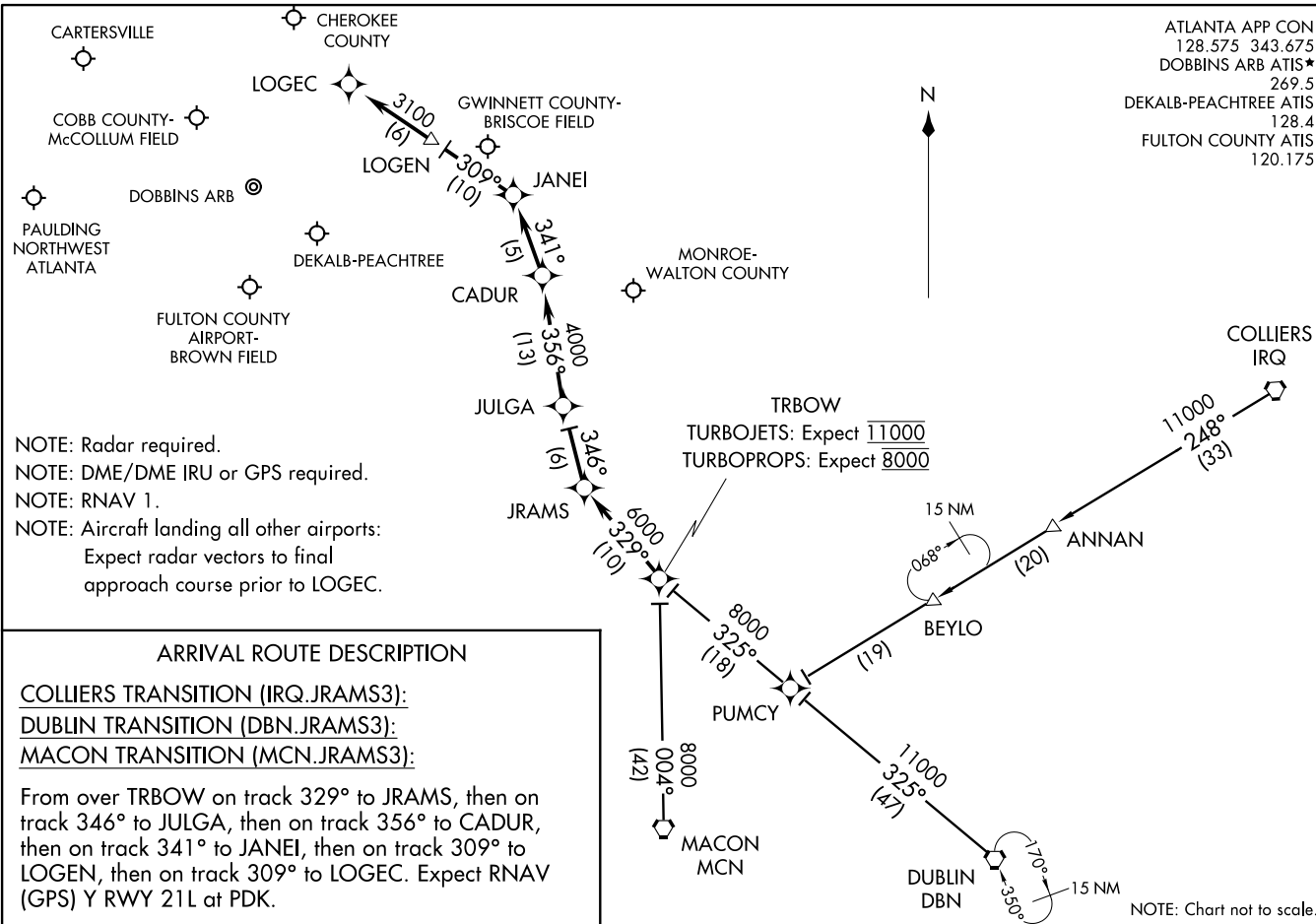
SE-4, 05 MAR 2015 to 02 APR 2015

SE-4, 05 MAR 2015 to 02 APR 2015

JRAMS THREE ARRIVAL (RNAV)  
(JRAMS.JRAMS3) 14205

(JRAMS.JRAMS3) 14205  
JRAMS THREE ARRIVAL (RNAV)

ATLANTA APP CON  
128.575 343.675  
DOBBINS ARB ATIS\*  
269.5  
DEKALB-PEACHTREE ATIS  
128.4  
FULTON COUNTY ATIS  
120.175



NOTE: Radar required.  
NOTE: DME/DME IRU or GPS required.  
NOTE: RNAV 1.  
NOTE: Aircraft landing all other airports:  
Expect radar vectors to final  
approach course prior to LOGEC.

ARRIVAL ROUTE DESCRIPTION

COLLIERS TRANSITION (IRQ.JRAMS3):  
DUBLIN TRANSITION (DBN.JRAMS3):  
MACON TRANSITION (MCN.JRAMS3):

From over TRBOW on track 329° to JRAMS, then on track 346° to JULGA, then on track 356° to CADUR, then on track 341° to JANEI, then on track 309° to LOGEN, then on track 309° to LOGEC. Expect RNAV (GPS) Y RWY 21L at PDK.

ATLANTA, GEORGIA

ATLANTA, GEORGIA