

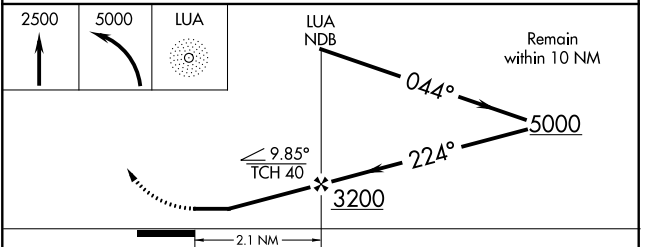
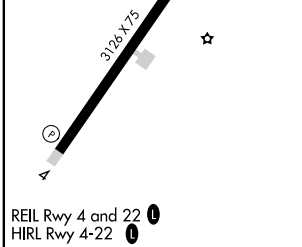
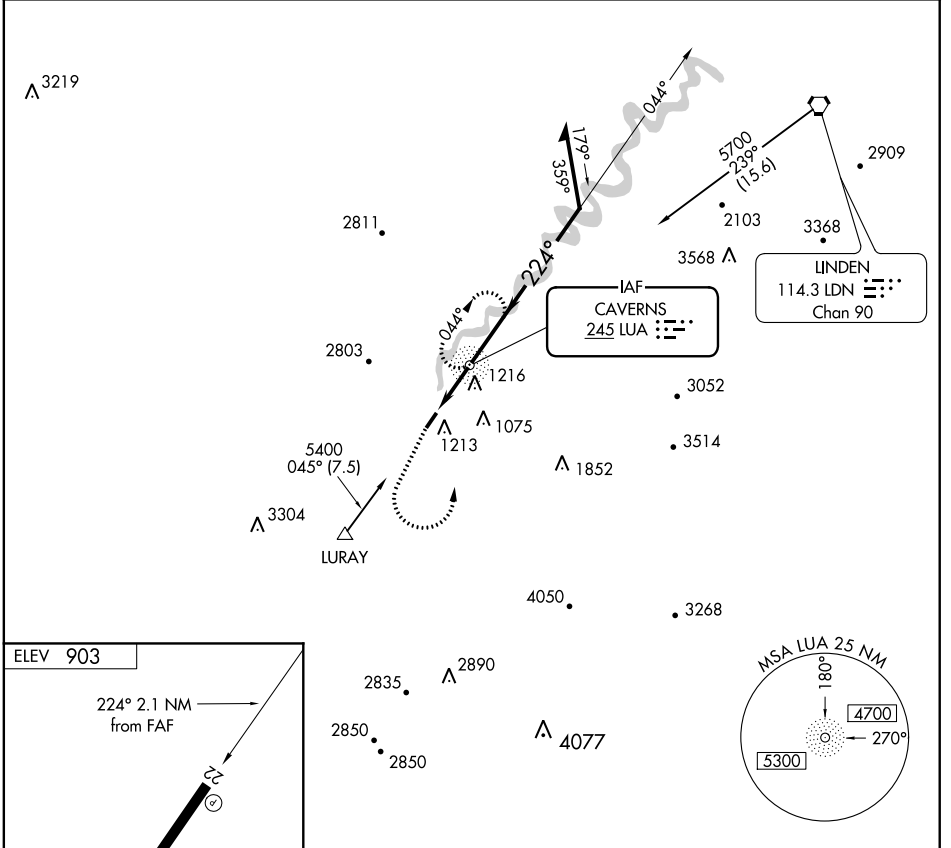
NDB LUA 245	APP CRS 224°	Rwy Idg TDZE Apt Elev	N/A N/A 903
-----------------------	------------------------	-----------------------------	--

NDB-A
LURAY CAVERNS (LUA)

When local altimeter setting not received, use Staunton/Waynesboro/Harrisburg altimeter setting.

MISSED APPROACH: Climb to 2500 then climbing left turn to 5000 direct LUA NDB and hold, continue climb-in-hold to 5000.

AWOS-3 118.275	WASHINGTON CENTER 133.2 282.2	UNICOM 122.8 (CTAF) 0
--------------------------	---	--



FAF to MAP 2.1 NM					CATEGORY	A	B	C	D	
Knots	60	90	120	150	180	CIRCLING	2360-1¼ 1457 (1500-1¼)	2360-1½ 1457 (1500-1½)	NA	NA
Min:Sec	2:06	1:24	1:03	0:50	0:42					

NE-3, 07 DEC 2017 to 04 JAN 2018

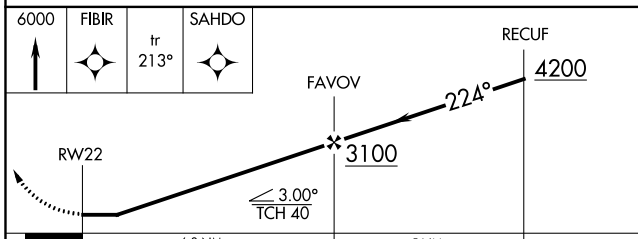
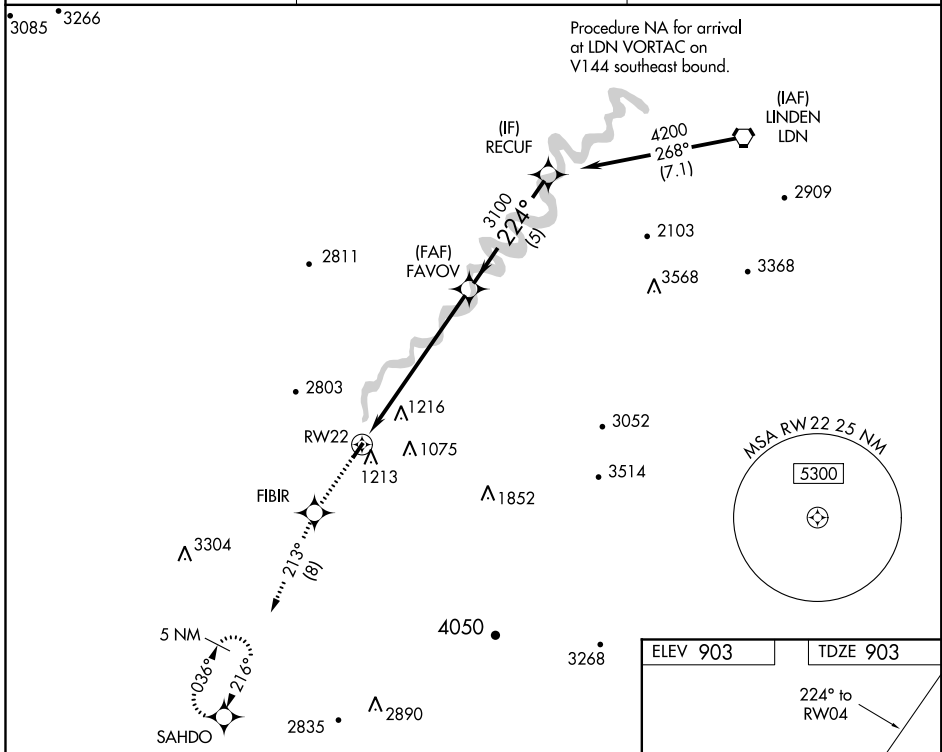
NE-3, 07 DEC 2017 to 04 JAN 2018

WAAS CH 77627 W22A	APP CRS 224°	Rwy Idg TDZE Apt Elev	3125 903 903
--	------------------------	-----------------------------	---

RNAV (GPS) RWY 22

LURAY CAVERNS (LUA)

<p>▽ DME/DME RNP-0.3 NA. Helicopter visibility reduction below ¼ SM NA. When local altimeter setting not received, use Staunton/Waynesboro/Harrisonburg altimeter setting and increase all MDA 120 feet; increase LNAV Cat B and Circling Cat B visibility ¼ mile.</p> <p>▲ -16°C/3°F</p>	<p>MISSED APPROACH: Climb to 6000 direct FIBIR and on track 213° to SAHDO and hold, continue climb-in-hold to 6000.</p>	
<p>AWOS-3 118.275</p>	<p>WASHINGTON CENTER 133.2 282.2</p>	<p>UNICOM 122.8 (CTAF) 0</p>



ELEV 903	TDZE 903
<p>224° to RW04</p> <p>3128 X 75</p>	
<p>REIL Rwy 4 and 22 0</p> <p>HIRL Rwy 4-22 0</p>	

CATEGORY	A	B	C	D
LP MDA	1460-1	557 (600-1)	NA	NA
LNAV MDA	1820-1¼	917 (1000-1¼)	NA	NA
CIRCLING	1820-1¼	917 (1000-1¼)	NA	NA

NE-3, 07 DEC 2017 to 04 JAN 2018

NE-3, 07 DEC 2017 to 04 JAN 2018

LURAY, VIRGINIA

AL-6229 (FAA)

17005

WAAS CH 65727 W04A	APP CRS 044°	Rwy Idg TDZE Apt Elev	3125 903 903
--	------------------------	-----------------------------	---

RNAV (GPS) RWY 4

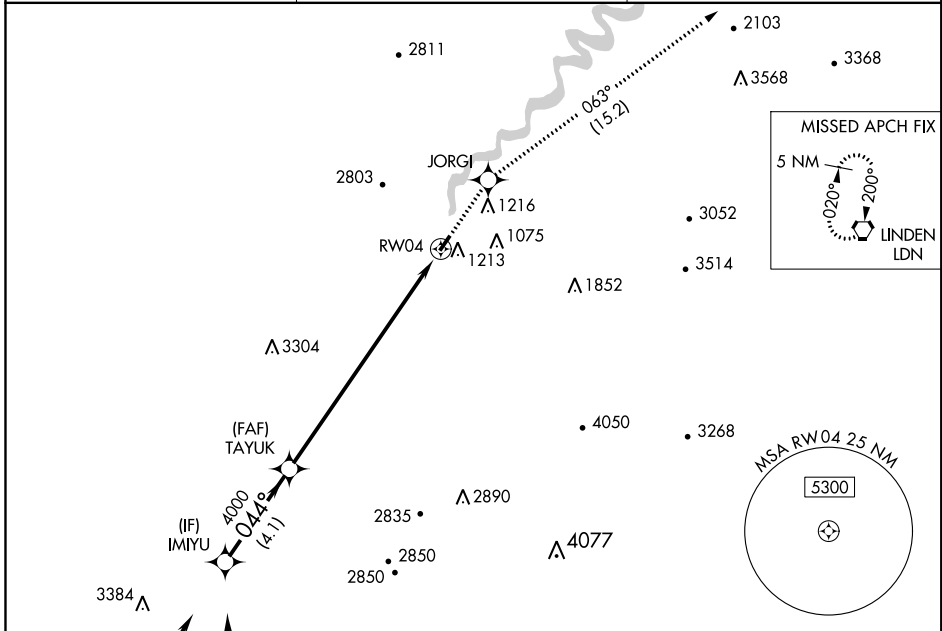
LURAY CAVERNS (LUA)

⚠ DME/DME RNP-0.3 NA. Helicopter visibility reduction below 3/4 SM NA. When local altimeter setting not received, use Staunton/Waynesboro/Harrisonburg altimeter setting and increase all MDA 120 feet.

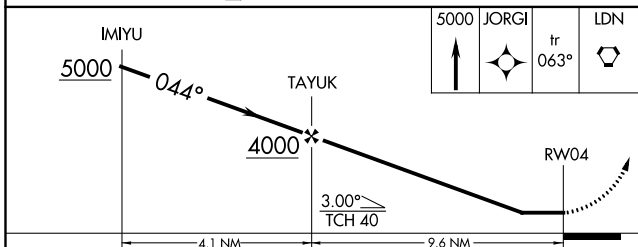
❄ -16°C/3°F

MISSED APPROACH: Climb to 5000 direct JORGI and on track 063° to LDN VORTAC and hold.

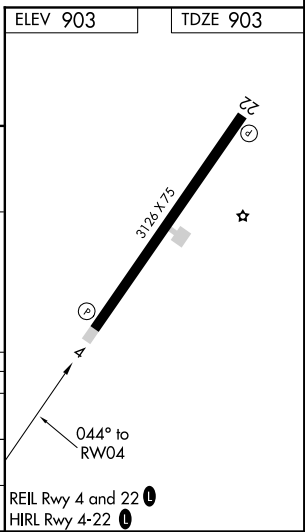
AWOS-3 118.275	WASHINGTON CENTER 133.2 282.2	UNICOM 122.8 (CTAF) 0
--------------------------	---	---------------------------------



ELEV 903	TDZE 903
----------	----------



CATEGORY	A	B	C	D
LP MDA	2180-1¼ 1277 (1300-1¼)	2180-1½ 1277 (1300-1½)	NA	NA
LNAV MDA	2240-1¼ 1337 (1400-1¼)	2240-1½ 1337 (1400-1½)	NA	NA
CIRCLING	2240-1¼ 1337 (1400-1¼)	2240-1½ 1337 (1400-1½)	NA	NA



NE-3, 07 DEC 2017 to 04 JAN 2018

NE-3, 07 DEC 2017 to 04 JAN 2018

LURAY, VIRGINIA
Orig-B 29MAY14

38°40'N-78°30'W

RNAV (GPS) RWY 4

LURAY CAVERNS (LUA)

LURAY, VIRGINIA

AL-6229 (FAA)

17117

VORTAC LDN 114.3 Chan 90	APP CRS 237°	Rwy Idg TDZE Apt Elev N/A N/A 903
--	------------------------	---

VOR/DME-B

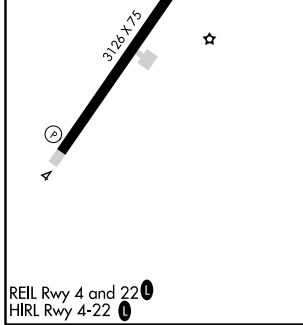
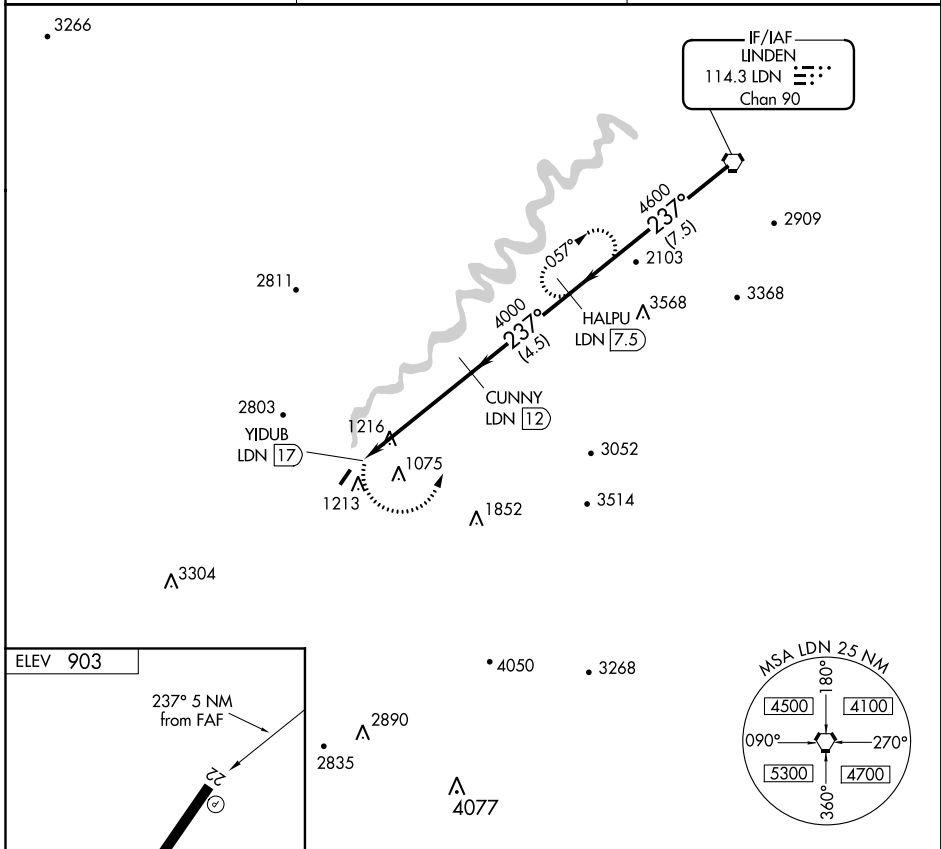
LURAY CAVERNS (LUA)

⚠ Visibility reduction by helicopters NA. When local altimeter setting not received, use Staunton/Waynesboro/Harrisburg altimeter setting and increase all MDA 120 feet.

❄ -16°C/3°F

MISSED APPROACH: Climbing left turn to 4900 on LDN VORTAC R-237 to HALPU/LDN 7.5 DME and hold, continue climb-in-hold to 4900.

AWOS-3 118.275	WASHINGTON CENTER 133.2 282.2	UNICOM 122.8 (CTAF) 0
--------------------------	---	--



4900	HALPU LDN 7.5	CUNNY LDN 12	HALPU LDN 7.5	LDN VORTAC
LDN R-237			237° 4600	
	YIDUB LDN 17	4000	4600	
	5.0 NM	4.5 NM	7.5 NM	
CATEGORY	A	B	C	D
CIRCLING	2200-1¼ 1297 (1300-1¼)	2200-1½ 1297 (1300-1½)	NA	NA

LURAY, VIRGINIA
Amdt 3A 31MAY12

38°40'N-78°30'W

LURAY CAVERNS (LUA)
VOR/DME-B

NE-3, 07 DEC 2017 to 04 JAN 2018

NE-3, 07 DEC 2017 to 04 JAN 2018