

WAAS CH 78415 W18A	APP CRS 185°	Rwy Idg TDZE 1197 Apt Elev 1197	4305
---------------------------------	------------------------	---	-------------

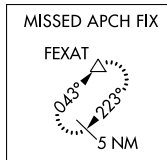
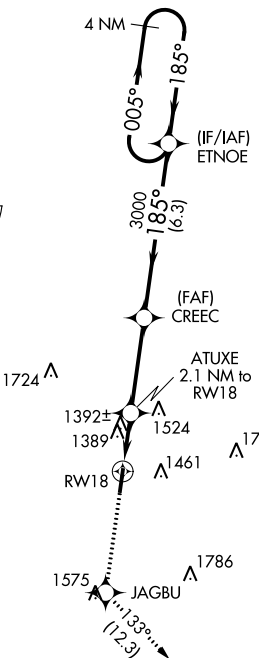
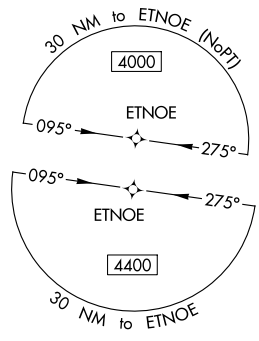
RNAV (GPS) RWY 18

LE MARS MUNI (L.R.J)

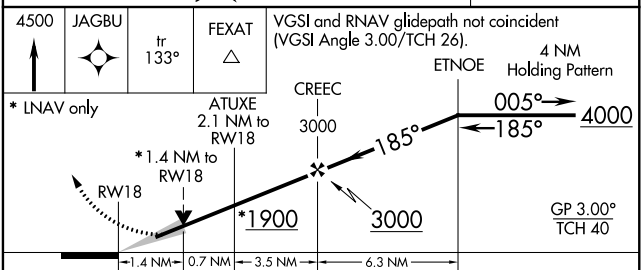
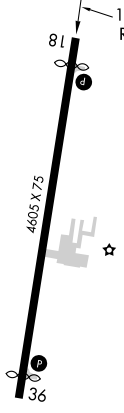
⚠ Baro-VNAV NA when using Orange City altimeter setting. For uncompensated Baro-VNAV systems, LNAV/VNAV NA below -17°C (2°F) or above 54°C (130°F). DME/DME RNP-0.3 NA. When local altimeter setting not received, use Orange City altimeter setting and increase LPV DA to 1510 feet, LNAV/VNAV DA to 1774 feet and LNAV/VNAV all Cats visibility ¼ mile; increase all MDA 80 feet and LNAV Cat C and Circling Cat C visibility ¼ mile. VDP NA with Orange City altimeter setting.

MISSED APPROACH:
Climb to 4500 direct JAGBU and on track 133° to FEXAT and hold.

AWOS-3 125.525	SIoux CITY APP CON * 124.6 307.0	UNICOM 122.8 (CTAF) 0
--------------------------	--	---------------------------------



ELEV 1197	TDZE 1197
------------------	------------------



CATEGORY	A	B	C	D
LPV DA	1447-1 250 (300-1)			NA
LNAV/VNAV DA	1711-1¾ 514 (600-1¾)			NA
LNAV MDA	1660-1	463 (500-1)	1660-1⅝ 463 (500-1⅝)	NA
CIRCLING	1760-1 563 (700-1)	1820-1 623 (700-1)	1820-1¾ 623 (700-1¾)	NA

NC-3, 07 DEC 2017 to 04 JAN 2018

NC-3, 07 DEC 2017 to 04 JAN 2018

WAAS CH 42516 W36A	APP CRS 005°	Rwy ldg 4305 TDZE 1197 Apt Elev 1197
--	------------------------	---

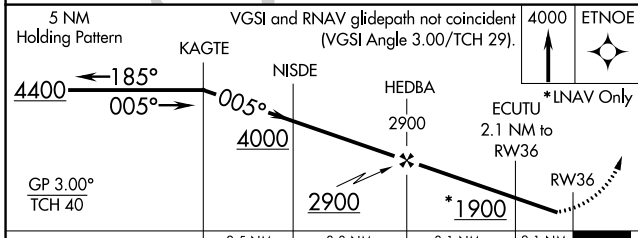
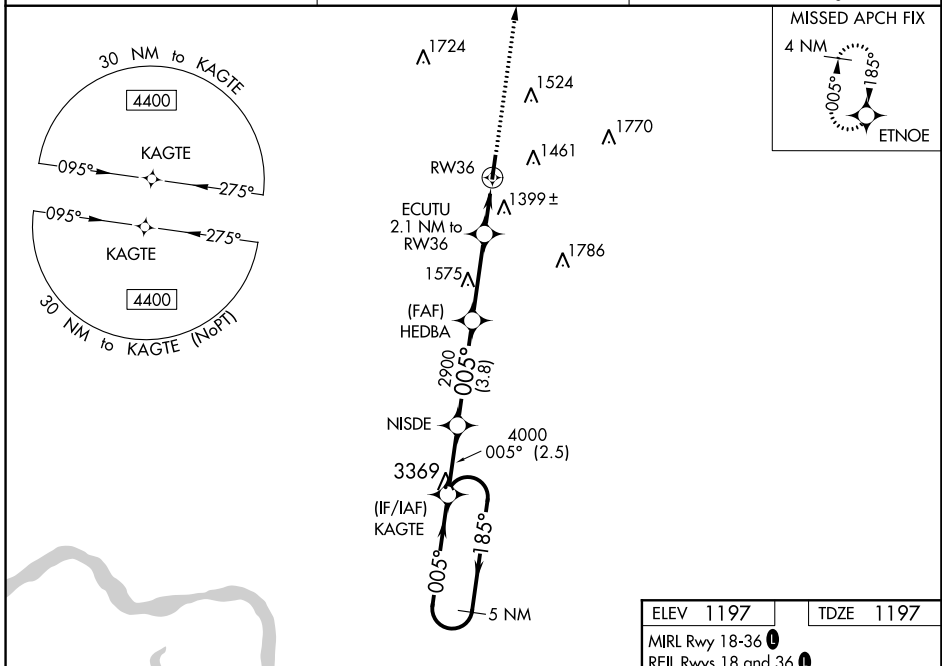
RNAV (GPS) RWY 36

LE MARS MUNI (L.R.J)

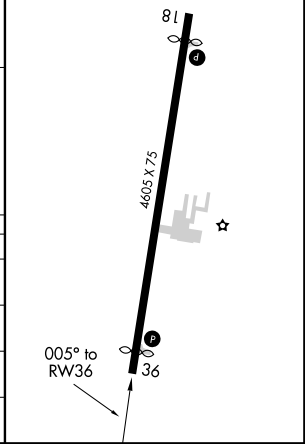
⚠ Baro-VNAV NA when using Orange City altimeter setting. For uncompensated Baro-VNAV systems, LNAV/VNAV NA below -17°C (2°F) or above 54°C (130°F). DME/DME RNP-0.3 NA.
⚠ When local altimeter setting not received, use Orange City altimeter setting and increase LPV DA to 1510 feet, LNAV/VNAV DA to 1786 feet and LPV and LNAV/VNAV all Cats visibility 1/8 mile; increase all MDA 80 feet and LNAV Cat C and Circling Cat C visibility 1/4 mile. Helicopter visibility reduction below 1 SM NA.

MISSED APPROACH:
Climb to 4000 direct ETNOE and hold.

AWOS-3 125.525	SIOUX CITY APP CON * 124.6 307.0	UNICOM 122.8 (CTAF) 1
--------------------------	--	---------------------------------



ELEV 1197	TDZE 1197
MIRL Rwy 18-36 1	REIL Rwy 18 and 36 1



CATEGORY	A	B	C	D
LPV DA	1469-1 272 (300-1)			NA
LNAV/VNAV DA	1723-17/8 526 (600-17/8)			NA
LNAV MDA	1660-1 463 (500-1)		1660-13/8 463 (500-13/8)	NA
CIRCLING	1760-1 563 (600-1)	1820-1 623 (700-1)	1820-13/4 623 (700-13/4)	NA

NC-3, 07 DEC 2017 to 04 JAN 2018

NC-3, 07 DEC 2017 to 04 JAN 2018

INSTRUMENT APPROACH PROCEDURE CHARTS

A IFR ALTERNATE AIRPORT MINIMUMS

Standard alternate minimums for non-precision approaches and approaches with vertical guidance [NDB, VOR, LOC, TACAN, LDA, SDF, VOR/DME, ASR, RNAV (GPS) or RNAV (RNP)] are 800-2. Standard alternate minimums for precision approaches (ILS, PAR, or GLS) are 600-2. Airports within this geographical area that require alternate minimums other than standard or alternate minimums with restrictions are listed below. NA - means alternate minimums are not authorized due to unmonitored facility, absence of weather reporting service, or lack of adequate navigation coverage. Civil pilots see FAR 91. IFR Alternate Minimums: Ceiling and Visibility Minimums not applicable to USA/USN/USAF. Pilots must review the IFR Alternate Minimums Notes for alternate airfield suitability.

NAME ALTERNATE MINIMUMS

ALGONA, IA

ALGONA MUNI (AXA).....RNAV (GPS) Rwy 12
 RNAV (GPS) Rwy 30
 VOR/DME -A

NA when local weather not available.

AMES, IA

AMES MUNI (AMW).....ILS or LOC Rwy 1¹
 RNAV (GPS) Rwy 1
 RNAV (GPS) Rwy 13
 RNAV (GPS) Rwy 19
 RNAV (GPS) Rwy 31

NA when local weather not available.

¹ILS, Categories A, B, C, 700-2, Category D, 1100-3; LOC, Category D, 1100-3.

ANKENY, IA

ANKENY RGNL (IKV).....RNAV (GPS) Rwy 18
 RNAV (GPS) Rwy 22
 RNAV (GPS) Rwy 36

Category D, 900-2¾.

ATLANTIC, IA

ATLANTIC MUNI (AIO).....RNAV (GPS) Rwy 2
 RNAV (GPS) Rwy 20

NA when local weather not available.

BOONE, IA

BOONE MUNI (BNW).....RNAV (GPS) Rwy 15
 RNAV (GPS) Rwy 33

NA when local weather not available.

BRANSON, MO

BRANSON (BBG).....RNAV (GPS) Rwy 14¹
 RNAV (GPS) Rwy 32²

NA when local weather not available.

¹Category C, 800-2¼; Category D, 800-2½.

²Category D, 800-2¼.

NAME ALTERNATE MINIMUMS

BROOKFIELD, MO

NORTH CENTRAL MISSOURI
 RGNL (MO8).....RNAV (GPS) Rwy 18
 RNAV (GPS) Rwy 36

NA when local weather not available.

BURLINGTON, IA

SOUTHEAST IOWA
 RGNL (BRL).....ILS or LOC Rwy 36¹
 RNAV (GPS) Rwy 12
 RNAV (GPS) Rwy 30
 RNAV (GPS) Rwy 36
 VOR/DME Rwy 12
 VOR Rwy 30

NA when local weather not available.

¹ILS, LOC, Category D, 800-2¼.

CAMDENTON, MO

CAMDENTON MEMORIAL-LAKE
 RGNL (OZS).....RNAV (GPS) Rwy 15
 RNAV (GPS) Rwy 33
 VOR-A

NA when local weather not available.

CAPE GIRARDEAU, MO

CAPE GIRARDEAU
 RGNL (CGI).....ILS or LOC Rwy 10¹²
 LOC/DME BC Rwy 28¹³
 RNAV (GPS) Rwy 2³
 RNAV (GPS) Rwy 10³
 RNAV (GPS) Rwy 20³
 RNAV (GPS) Rwy 28³
 VOR Rwy 2⁴

NA when local weather not available.

¹NA when control tower closed.

²ILS, Categories A, B, C, 700-2; Category D, 800-2¼; LOC, Category D, 800-2¼.

³Category D, 800-2¼.

⁴Category C, 800-2¼, Category D, 800-2½.

07 DEC 2017 to 04 JAN 2018

07 DEC 2017 to 04 JAN 2018

NAME ALTERNATE MINIMUMS

CARROLL, IA

ARTHUR
N NEU (CIN).....RNAV (GPS) Rwy 13
RNAV (GPS) Rwy 31
NA when local weather not available.

CEDAR RAPIDS, IA

THE EASTERN
IOWA (CID).....ILS or LOC Rwy 9¹
ILS or LOC Rwy 27²
RNAV (GPS) Rwy 9
RNAV (GPS) Rwy 27

NA when local weather not available.

¹NA when control tower closed.

²ILS, NA when control tower closed.

CENTERVILLE, IA

CENTERVILLE
MUNI (TVK).....RNAV (GPS) Rwy 16
RNAV (GPS) Rwy 34
NA when local weather not available.

CHARITON, IA

CHARITON
MUNI (CNC).....RNAV (GPS) Rwy 10
RNAV (GPS) Rwy 17
NA when local weather not available.

CHARLES CITY, IA

NORTHEAST
IOWA RGNL (CCY).....LOC Rwy 12
RNAV (GPS) Rwy 12
RNAV (GPS) Rwy 30
NA when local weather not available.

CHEROKEE, IA

CHEROKEE COUNTY
RGNL (CKP).....RNAV (GPS) Y Rwy 36
RNAV (GPS) Z Rwy 36¹
NA when local weather not available.
¹Categories A, B, 800-2¼.

CLARINDA, IA

SCHENCK FIELD (ICL).....RNAV (GPS) Rwy 2
RNAV (GPS) Rwy 20
NA when local weather not available.

CLARION, IA

CLARION MUNI (CAV).....NDB Rwy 14
RNAV (GPS) Rwy 14
RNAV (GPS) Rwy 32
NA when local weather not available.

NAME ALTERNATE MINIMUMS

CLINTON, IA

CLINTON MUNI (CWI).....ILS or LOC Rwy 3
RNAV (GPS) Rwy 3
RNAV (GPS) Rwy 14
RNAV (GPS) Rwy 21
RNAV (GPS) Rwy 32
NA when local weather not available.

CLINTON, MO

CLINTON
RGNL (GLY).....RNAV (GPS) Rwy 4
RNAV (GPS) Rwy 18
RNAV (GPS) Rwy 22
RNAV (GPS) Rwy 36
NA when local weather not available.

COLUMBIA, MO

COLUMBIA
RGNL (COU).....VOR Rwy 13
Categories A, B, 1000-2; Categories C, D, 1000-3.

COUNCIL BLUFFS, IA

COUNCIL BLUFFS
MUNI (CBF).....ILS or LOC Rwy 36¹
RNAV (GPS) Rwy 14
RNAV (GPS) Rwy 18
RNAV (GPS) Rwy 36
VOR-A

NA when local weather not available.

¹Category D, 700-2.

CRESTON, IA

CRESTON MUNI (CSQ).....RNAV (GPS) Rwy 16
RNAV (GPS) Rwy 34
NA when local weather not available.

DAVENPORT, IA

DAVENPORT
MUNI (DVN).....ILS or LOC Rwy 15
RNAV (GPS) Rwy 3
RNAV (GPS) Rwy 15
RNAV (GPS) Rwy 21
RNAV (GPS) Rwy 33
VOR Rwy 3
VOR Rwy 21
NA when local weather not available.

DECORAH, IA

DECORAH MUNI (DEH).....RNAV (GPS) Rwy 11
RNAV (GPS) Rwy 29
VOR Rwy 29
NA when local weather not available.

07 DEC 2017 to 04 JAN 2018

07 DEC 2017 to 04 JAN 2018

NAME ALTERNATE MINIMUMS

DES MOINES, IA

- DES MOINES
- INTL (DSM).....ILS or LOC Rwy 5¹
 - ILS or LOC Rwy 13¹
 - ILS or LOC Rwy 31¹
 - RNAV (GPS) Rwy 5²
 - RNAV (GPS) Rwy 13²
 - RNAV (GPS) Rwy 31²
 - VOR/DME Rwy 23³

¹Category E, 900-2¼.
²NA when local weather not available.
³Category C, 800-2¼; Category D, 800-2½.

DUBUQUE, IA

- DUBUQUE
- RGNL (DBQ).....LOC Rwy 31¹²
 - RNAV (GPS) Rwy 13
 - RNAV (GPS) Rwy 18
 - RNAV (GPS) Rwy 31
 - RNAV (GPS) Rwy 36
 - VOR Rwy 13¹
 - VOR Rwy 31¹
 - VOR Rwy 36

NA when local weather not available.
¹Category D, 800-2¼.
²NA when control tower closed.

ESTHERVILLE, IA

- ESTHERVILLE
 - MUNI (EST).....RNAV (GPS) Rwy 16
 - RNAV (GPS) Rwy 34
- NA when local weather not available.

FAIRFIELD, IA

- FAIRFIELD MUNI (FFL).....RNAV (GPS) Rwy 18
 - RNAV (GPS) Rwy 36
- NA when local weather not available.

FARMINGTON, MO

- FARMINGTON
 - RGNL (FAM).....RNAV (GPS) Rwy 2
 - RNAV (GPS) Rwy 20
- NA when local weather not available.

FOREST CITY, IA

- FOREST CITY MUNI (FXY).....NDB Rwy 33¹
 - RNAV (GPS) Rwy 15
 - RNAV (GPS) Rwy 33
 - VOR/DME-A

NA when local weather not available.
¹Category D, 800-2¼.

NAME ALTERNATE MINIMUMS

FORT DODGE, IA

- FORT DODGE
- RGNL (FOD).....RNAV (GPS) Rwy 6
 - RNAV (GPS) Rwy 12
 - RNAV (GPS) Rwy 24
 - RNAV (GPS) Rwy 30
 - VOR Rwy 12
 - VOR/DME Rwy 30

NA when local weather not available.

FORT LEONARD WOOD, MO

- WAYNESVILLE-ST. ROBERT RGNL FORNEY
- FIELD (TBN).....ILS or LOC Rwy 14¹²
 - NDB Rwy 32¹
 - RNAV (GPS) Rwy 14²
 - RNAV (GPS) Rwy 32²
 - VOR Rwy 14¹
 - VOR Rwy 32¹

¹NA when control tower closed.
²NA when local weather not available.

FORT MADISON, IA

- FORT MADISON
- MUNI (FSW).....RNAV (GPS) Rwy 17
 - RNAV (GPS) Rwy 35
 - VOR/DME-A

NA when local weather not available.

GRINNELL, IA

- GRINNELL RGNL (GGI).....RNAV (GPS) Rwy 13
 - RNAV (GPS) Rwy 31
 - VOR/DME Rwy 31

NA when local weather not available.

HARRISONVILLE, MO

- LAWRENCE SMITH
- MEMORIAL (LRY).....RNAV (GPS) Rwy 17
 - RNAV (GPS) Rwy 35

NA when local weather not available.

INDEPENDENCE, IA

- INDEPENDENCE
- MUNI (IIB).....NDB Rwy 18¹
 - RNAV (GPS) Rwy 18
 - RNAV (GPS) Rwy 36

NA when local weather not available.
¹Category C, 800-2¼.

IOWA CITY, IA

- IOWA CITY MUNI (IOW).....RNAV (GPS) Rwy 25
 - RNAV (GPS) Rwy 30
 - VOR-A

NA when local weather not available.

07 DEC 2017 to 04 JAN 2018

07 DEC 2017 to 04 JAN 2018

NAME ALTERNATE MINIMUMS

IOWA FALLS, IA

IOWA FALLS
MUNI (IFA).....RNAV (GPS) Rwy 13
RNAV (GPS) Rwy 31

NA when local weather not available.

JEFFERSON CITY, MO

JEFFERSON CITY
MEMORIAL (JEF).....ILS or LOC Rwy 30¹
RNAV (GPS) Rwy 12²
RNAV (GPS) Rwy 30²

NA when local weather not available.

¹ILS, Categories A, B, 800-2; Category C, 800-2¼;
Category D, 1100-3; LOC, Category C, 800-2¼;
Category D, 1100-3.

²Category C, 800-2¼; Category D, 800-2½.

JOPLIN, MO

JOPLIN
RGNL (JLN).....ILS or LOC/DME Rwy 18¹
ILS or LOC/NDB Rwy 13²³
LOC BC Rwy 31²

¹NA when control tower closed.

²NA when tower closed.

³Category D, 700-2.

KAISER/LAKE OZARK, MO

LEE C. FINE
MEMORIAL (AIZ).....RNAV (GPS) Rwy 4
RNAV (GPS) Rwy 22
VOR Rwy 4

NA when local weather not available.

KANSAS CITY, MO

CHARLES B WHEELER
DOWNTOWN (MKC).....ILS or LOC Rwy 3¹
ILS or LOC Rwy 19²
RNAV (GPS) Rwy 3³
RNAV (GPS) Rwy 19⁴
RNAV (GPS) Rwy 21³

¹ILS, LOC, Categories A, B, 900-2; Categories C,
D, 900-2½.

²ILS, Categories A, B, C 800-2; Category D, 800-
2½; LOC, Category D, 800-2½.

³Category D, 800-2½.

⁴Category D, 900-3.

KEOKUK, IA

KEOKUK MUNI (EOK).....NDB Rwy 14
NDB Rwy 26
RNAV (GPS) Rwy 8
RNAV (GPS) Rwy 14
RNAV (GPS) Rwy 26
RNAV (GPS) Rwy 32

NA when local weather not available.

NAME ALTERNATE MINIMUMS

KIRKSVILLE, MO

KIRKSVILLE
RGNL (IRK).....ILS or LOC/DME Rwy 36
RNAV (GPS) Rwy 18
RNAV (GPS) Rwy 36
VOR-A

NA when local weather not available.

KNOXVILLE, IA

KNOXVILLE
MUNI (OXV).....RNAV (GPS) Rwy 15
RNAV (GPS) Rwy 33

NA when local weather not available.

LE MARS, IA

LE MARS MUNI (LRJ).....RNAV (GPS) Rwy 18
RNAV (GPS) Rwy 36

NA when local weather not available.

LEE'S SUMMIT, MO

LEE'S SUMMIT
MUNI (LXT).....RNAV (GPS) Rwy 11¹
RNAV (GPS) Rwy 18²
RNAV (GPS) Rwy 29²
RNAV (GPS) Rwy 36²

¹Category C, 800-2¼; Category D, 800-2½.

²NA when local weather not available.

MARSHALLTOWN, IA

MARSHALLTOWN
MUNI (MIW).....RNAV (GPS) Rwy 13¹
RNAV (GPS) Rwy 31¹
VOR Rwy 13
VOR Rwy 31

NA when local weather not available.

¹Category D, 900-2¼.

MASON CITY, IA

MASON CITY
MUNI (MCW).....ILS or LOC Rwy 36
LOC/DME BC Rwy 18
RNAV (GPS) Rwy 18
RNAV (GPS) Rwy 30
RNAV (GPS) Rwy 36
VOR Rwy 36

NA when local weather not available.

MONETT, MO

MONETT RGNL (HFJ).....RNAV (GPS) Rwy 18
RNAV (GPS) Rwy 36

NA when local weather not available.

MONTICELLO, IA

MONTICELLO
RGNL (MXO).....RNAV (GPS) Rwy 15
RNAV (GPS) Rwy 33

NA when local weather not available.

NAME ALTERNATE MINIMUMS

MOUNT PLEASANT, IA

MOUNT PLEASANT
MUNI (MPZ).....**NDB Rwy 33¹**
RNAV (GPS) Rwy 15
RNAV (GPS) Rwy 33

NA when local weather not available.
¹Category C, 800-2¼.

MUSCATINE, IA

MUSCATINE
MUNI (MUT).....**RNAV (GPS) Rwy 6¹**
RNAV (GPS) Rwy 12
RNAV (GPS) Rwy 24
RNAV (GPS) Rwy 30

NA when local weather not available.
¹Categories A, B, C, D, 800-2½.

NEOSHO, MO

NEOSHO HUGH
ROBINSON (EOS).....**RNAV (GPS) Rwy 1**
RNAV (GPS) Rwy 19

NA when local weather not available.

NEWTON, IA

NEWTON MUNI-EARL JOHNSON
FIELD (TNU).....**RNAV (GPS) Rwy 14**
RNAV (GPS) Rwy 32

NA when local weather not available.

ORANGE CITY, IA

ORANGE CITY
MUNI (ORC).....**RNAV (GPS) Rwy 16**
RNAV (GPS) Rwy 34

NA when local weather not available.

OSCEOLA, IA

OSCEOLA
MUNI (I75).....**RNAV (GPS) Rwy 18**
RNAV (GPS) Rwy 36

NA when local weather not available.

OSKALOOSA, IA

OSKALOOSA
MUNI (OOA).....**RNAV (GPS) Rwy 13**
RNAV (GPS) Rwy 31

NA when local weather not available.

OTTUMWA, IA

OTTUMWA
RGNL (OTM).....**RNAV (GPS) Rwy 13**
RNAV (GPS) Rwy 31
VOR/DME Rwy 13

NA when local weather not available.

NAME ALTERNATE MINIMUMS

PELLA, IA

PELLA MUNI (PEA).....**RNAV (GPS) Rwy 16**
RNAV (GPS) Rwy 34
NA when local weather not available.

PERRY, IA

PERRY MUNI (PRO).....**RNAV (GPS) Rwy 14**
RNAV (GPS) Rwy 32
NA when local weather not available.

PERRYVILLE, MO

PERRYVILLE
RGNL (PCD).....**RNAV (GPS) Rwy 2**
RNAV (GPS) Rwy 20
VOR-A

Category D, 800-2¼.

POPLAR BLUFF, MO

POPLAR BLUFF
MUNI (POF).....**RNAV (GPS) Rwy 18**
RNAV (GPS) Rwy 36

NA when local weather not available.

RED OAK, IA

RED OAK MUNI (RDK).....**RNAV (GPS) Rwy 5**
RNAV (GPS) Rwy 17
NA when local weather not available.

ROLLA-VICHY, MO

ROLLA NATIONAL (VIH).....**RNAV (GPS) Rwy 4**
VOR Rwy 22
VOR/DME Rwy 4

NA when local weather not available.

ST. CHARLES, MO

ST CHARLES COUNTY
SMARTT (SET).....**RNAV (GPS) Rwy 18**
VOR Rwy 18

NA when local weather not available.

07 DEC 2017 to 04 JAN 2018

07 DEC 2017 to 04 JAN 2018

NAME ALTERNATE MINIMUMS

ST. JOSEPH, MO

ROSECRANS
 MEMORIAL (STJ).....**ILS or LOC Rwy 35**¹²
 LOC BC Rwy 17¹³
 RADAR-1⁴
 RNAV (GPS) Rwy 13⁶⁷
 RNAV (GPS) Rwy 17⁶⁸
 RNAV (GPS) Rwy 31⁶⁹
 RNAV (GPS) Rwy 35⁶⁸
 VOR or TACAN Rwy 17⁵

- ¹NA when control tower closed.
- ²ILS, Category D, 700-2¼; Category E, 1000-3.
LOC, Category D, 800-2¼; Category E, 1000-3.
- ³Category D, 800-2¼.
- ⁴PAR, ASR, Category C, 800-2¼; Category D, 900-2¾; Category E, 1000-3.
- ⁵Category D, 800-2¼; Category E, 1000-3.
- ⁶NA when local weather not available.
- ⁷Category C, 800-2½; Category D, 900-2¾.
- ⁸Category C, 800-2¼; Category D, 900-2¾; Category E, 1000-3.
- ⁹Category C, 800-2¼; Category D, 900-2¾.

ST. LOUIS, MO

SPIRIT OF
 ST. LOUIS (SUS).....**ILS or LOC Rwy 8R**²³
 ILS or LOC Rwy 26L²⁴
 RNAV (GPS) Rwy 8L¹
 RNAV (GPS) Rwy 8R¹⁵
 RNAV (GPS) Rwy 26L¹⁵
 RNAV (GPS) Rwy 26R¹

- ¹NA when local weather not available.
- ²NA when control tower closed.
- ³ILS, Categories A, B, C, 700-2; Category D, 700-2¼. LOC, NA.
- ⁴ILS, Categories A, B, C, 700-2; Category D, 700-2¼. LOC, Category D, 800-2¼.
- ⁵Category D, 800-2¼.

SEDALIA, MO

SEDALIA
 RGNL (DMO).....**RNAV (GPS) Rwy 18**
 RNAV (GPS) Rwy 36
 NA when local weather not available.
 Category D, 800-2¼.

SHELDON, IA

SHELDON
 RGNL (SHL).....**RNAV (GPS) Rwy 15**
 RNAV (GPS) Rwy 33
 NA when local weather not available.

NAME ALTERNATE MINIMUMS

SHENANDOAH, IA

SHENANDOAH
 MUNI (SDA).....**NDB Rwy 4**
 RNAV (GPS) Rwy 4
 VOR/DME Rwy 12

NA when local weather not available.

SIOUX CITY, IA

SIOUX GATEWAY/COLONEL BUD DAY
 FIELD (SUX).....**ILS or LOC Rwy 13**²
 ILS or LOC Rwy 31²
 RNAV (GPS) Rwy 13₁
 RNAV (GPS) Rwy 17₃
 RNAV (GPS) Rwy 31₁
 RNAV (GPS) Rwy 35³
 VOR/DME or TACAN Rwy 13₁

- NA when local weather not available.
- ¹Category D, 800-2½; Category E, 1000-3.
- ²NA when control tower closed.
- ³Category D, 800-2½.

SPENCER, IA

SPENCER
 MUNI (SPW).....**RNAV (GPS) Rwy 12**²
 RNAV (GPS) Rwy 18
 RNAV (GPS) Rwy 30¹
 RNAV (GPS) Rwy 36
 VOR/DME Rwy 30¹

- NA when local weather not available.
- ¹Category C, 800-2¼, Category D, 800-2½.
- ²Category D, 800-2¼.

SPRINGFIELD, MO

SPRINGFIELD-BRANSON
 NATIONAL (SGF).....**ILS or LOC Rwy 2**¹
 ILS or LOC Rwy 14⁴
 RNAV (GPS) Rwy 2²
 RNAV (GPS) Rwy 20²
 RNAV (GPS) Rwy 32²
 VOR/DME or TACAN Rwy 2³
 VOR or TACAN Rwy 20³

- ¹ILS, Category D, 700-2, Category E, 900-3. LOC, Category E, 900-3.
- ²NA when local weather not available.
- ³Category E, 800-2¼.
- ⁴Category D, 700-2.

STORM LAKE, IA

STORM LAKE
 MUNI (SLB).....**RNAV (GPS) Rwy 17**
 RNAV (GPS) Rwy 35
 NA when local weather not available.

07 DEC 2017 to 04 JAN 2018

07 DEC 2017 to 04 JAN 2018

17285

NAME ALTERNATE MINIMUMS

NAME ALTERNATE MINIMUMS

VINTON, IA

VINTON VETERANS MEMORIAL
AIRPARK (VTI).....RNAV (GPS) Rwy 9
RNAV (GPS) Rwy 27
NA when local weather not available.

WARRENSBURG, MO

SKYHAVEN (RCM).....RNAV (GPS) Rwy 19
VOR/DME-A
NA when local weather not available.

WASHINGTON, IA

WASHINGTON
MUNI (AWG).....RNAV (GPS) Rwy 13
RNAV (GPS) Rwy 18
RNAV (GPS) Rwy 31
RNAV (GPS) Rwy 36
NA when local weather not available.
Category C, 800-2¼.

WASHINGTON, MO

WASHINGTON
RGNL (FYG).....RNAV (GPS) Rwy 15
RNAV (GPS) Rwy 33
VOR-A
Category C, 800-2¼.
NA when local weather not available.

WATERLOO, IA

WATERLOO
RGNL (ALO).....ILS or LOC Rwy 12¹
LOC BC Rwy 30
RNAV (GPS) Rwy 12
RNAV (GPS) Rwy 30
VOR Rwy 12
NA when local weather not available.
¹ILS, Category D, 700-2.

WEBSTER CITY, IA

WEBSTER CITY
MUNI (EBS).....RNAV (GPS) Rwy 14
RNAV (GPS) Rwy 32
VOR/DME Rwy 14
NA when local weather not available.

WEST PLAINS, MO

WEST PLAINS
RGNL (UNO).....RNAV (GPS) Rwy 18
RNAV (GPS) Rwy 36
NA when local weather not available.

07 DEC 2017 to 04 JAN 2018

07 DEC 2017 to 04 JAN 2018

17285

TAKEOFF MINIMUMS, (OBSTACLE) DEPARTURE PROCEDURES, AND

17341

DIVERSE VECTOR AREA (RADAR VECTORS)

INSTRUMENT APPROACH PROCEDURE CHARTS

IFR TAKEOFF MINIMUMS AND (OBSTACLE) DEPARTURE PROCEDURES

Civil Airports and Selected Military Airports

ALL USERS: Airports that have Departure Procedures (DPs) designed specifically to assist pilots in avoiding obstacles during the climb to the minimum enroute altitude, and/or airports that have civil IFR takeoff minimums other than standard, are listed below. Takeoff Minimums and Departure Procedures apply to all runways unless otherwise specified. Altitudes, unless otherwise indicated, are minimum altitudes in MSL.

DPs specifically designed for obstacle avoidance are referred to as Obstacle Departure Procedures (ODPs) and are textually described below, or published separately as a graphic procedure. If the ODP is published as a graphic procedure, its name will be listed below, and it can be found in either this volume (civil), or the applicable military volume, as appropriate. Users will recognize graphic obstacle DPs by the term "(OBSTACLE)" included in the procedure title; e.g., TETON TWO (OBSTACLE). If not specifically assigned an ODP, SID, or radar vector as part of an IFR clearance, an ODP may be required to be flown for obstacle clearance, even though not specifically stated in the IFR clearance. When doing so in this manner, ATC should be informed when the ODP being used contains a specified route to be flown, restrictions before turning, and/or altitude restrictions.

Some ODPs, which are established solely for obstacle avoidance, require a climb in visual conditions to cross the airport, a fix, or a NAVAID in a specified direction, at or above a specified altitude. These procedures are called Visual Climb Over Airport (VCOA). To ensure safe and efficient operations, the pilot must verbally request approval from ATC to fly the VCOA when requesting their IFR clearance.

At some locations where an ODP has been established, a diverse vector area (DVA) may be created to allow radar vectors to be used in lieu of an ODP. DVA information will state that headings will be as assigned by ATC and climb gradients, when applicable, will be published immediately following the specified departure procedure.

Graphic DPs designed by ATC to standardize traffic flows, ensure aircraft separation and enhance capacity are referred to as "Standard Instrument Departures (SIDs)". SIDs also provide obstacle clearance and are published under the appropriate airport section. ATC clearance must be received prior to flying a SID.

CIVIL USERS NOTE: Title 14 Code of Federal Regulations Part 91 prescribes standard takeoff rules and establishes takeoff minimums for certain operators as follows: (1) For aircraft, other than helicopters, having two engines or less – one statute mile visibility. (2) For aircraft having more than two engines – one-half statute mile visibility. (3) For helicopters – one-half statute mile visibility. These standard minima apply in the absence of any different minima listed below.

MILITARY USERS NOTE: Civil (nonstandard) takeoff minima are published below. For military takeoff minima, refer to appropriate service directives.

NAME	TAKEOFF MINIMUMS	NAME	TAKEOFF MINIMUMS
ALBIA, IA		AMES, IA	
ALBIA MUNI (4C8)		AMES MUNI (AMW)	
TAKEOFF MINIMUMS AND (OBSTACLE) DEPARTURE PROCEDURES		TAKEOFF MINIMUMS AND (OBSTACLE) DEPARTURE PROCEDURES	
AMDT 3 92317 (FAA)		AMDT 4 10154 (FAA)	
TAKEOFF MINIMUMS: Rwys 13, 31 , 300-1.		TAKEOFF MINIMUMS: Rwy 1 , std. w/ a min. climb of 227' per NM to 1800 or 1600-2½ for climb in visual conditions.	
DEPARTURE PROCEDURE: Rwy 31 , climb runway heading to 2000 before turning.		DEPARTURE PROCEDURE: Rwy 1 , climb heading 014° to 1800 before proceeding on course or for climb in visual conditions, cross Ames Muni airport at or above 2400 before proceeding on course. Rwy 13 , climb heading 133° to 2800 before turning right. Rwy 19 , climb on a heading between 198° CW 013° from DER or climb on a heading between 140° CCW 013° from DER. Rwy 31 , climb heading 313° to 1500 before proceeding on course.	
ALGONA, IA		TAKEOFF OBSTACLE NOTES: Rwy 1 , trees beginning 63' from DER, 374' right of centerline, up to 74' AGL/974' MSL. Trees, and wsk on hanger beginning 906' from DER, 714' left of centerline, up to 77' AGL/1007' MSL. Terrain at DER, 240' left of centerline, 919' MSL. Rwy 13 , trees, antenna on obstruction light pole and antenna on AWOS beginning 42' from DER, 90' right of centerline, up to 78' AGL/998' MSL. Terrain beginning 34' from DER, 181' left of centerline, 923' MSL. Trees beginning 918' from DER, 32' left of centerline, up to 83' AGL/993' MSL. Rwy 19 , trees, poles, road and rod on building beginning 1004' from DER, 407' right of centerline, up to 79' AGL/1059' MSL. Rwy 31 , trees, poles and roads beginning 214' from DER, 103' right of centerline, up to 57' AGL/987' MSL. Trees, poles and bush beginning 135' from DER, 109' left of centerline, up to 90' AGL/1020' MSL.	
ALGONA MUNI (AXA)			
TAKEOFF MINIMUMS AND (OBSTACLE) DEPARTURE PROCEDURES			
AMDT 4A 15232 (FAA)			
TAKEOFF MINIMUMS: Rwy 18, 36 , NA-Environmental.			
TAKEOFF OBSTACLE NOTES: Rwy 12 , trees beginning 16' from DER, 491' left of centerline, up to 100' AGL/1319' MSL. Rwy 30 , trees beginning 16' from DER, 290' left of centerline, up to 100' AGL/1329' MSL. Vehicle 255' from DER, 449' right of centerline, 15' AGL/1244' MSL. Trees beginning 3652' from DER, 1352' right of centerline, up to 100' AGL/1329' MSL.			

TAKEOFF MINIMUMS, (OBSTACLE) DEPARTURE PROCEDURES, AND

17341

DIVERSE VECTOR AREA (RADAR VECTORS)

TAKEOFF MINIMUMS, (OBSTACLE) DEPARTURE PROCEDURES, AND DIVERSE VECTOR AREA (RADAR VECTORS)

17341

ANKENY, IA

ANKENY RGNL (IKV)

TAKEOFF MINIMUMS AND (OBSTACLE)
DEPARTURE PROCEDURES
AMDT 2 17005 (FAA)

TAKEOFF MINIMUMS: **Rwy 22**, 400-2 or std. w/min. climb of 385' per NM to 1400.

DEPARTURE PROCEDURE: **Rwy 4**, climb on heading 042° to 2600 before turning left. **Rwy 18**, climbing left turn heading 150° to 2200 before proceeding on course. **Rwy 22**, climb on heading 222° to 1900 before turning right. **Rwy 36**, climbing right turn heading 050° to intercept TNU VOR/DME R-258 inbound to 3300 before turning westbound.

TAKEOFF OBSTACLE NOTES: **Rwy 4**, vehicle on road 196' from DER, crossing centerline, up to 15' AGL/917' MSL. Trees beginning 773' from DER, 677' right of centerline, up to 958' MSL. Trees beginning 892' from DER, 96' right of centerline, up to 967' MSL. Trees beginning 1010' from DER, 32' left of centerline, up to 951' MSL. Tree 1616' from DER, 252' right of centerline, 975' MSL. Trees beginning 3639' from DER, 1158' left of centerline, up to 1006' MSL. Tree 3840' from DER, 121' right of centerline, 1011' MSL. Tree 4035' from DER, 1344' left of centerline, 1012' MSL. Tree 4155' from DER, 1142' left of centerline, 1028' MSL. **Rwy 18**, REIL 10' from DER, 31' left of centerline, 2' AGL/889' MSL. REIL 10' from DER, 29' right of centerline, 2' AGL/889' MSL. Tree 179' from DER, 291' left of centerline, 894' MSL. Trmsn twr 2606' from DER, 57' left of centerline, 85' AGL/953' MSL. T-I twrs beginning 2611' from DER, 58' left of centerline, up to 92' AGL/967' MSL. **Rwy 22**, REIL 10' from DER, 17' left of centerline, 1' AGL/911' MSL. Sign 520' from DER, 617' right of centerline, 20' AGL/942' MSL. Vehicles on rd beginning 868' from DER, crossing centerline, up to 17' AGL/946' MSL. Sign 1430' from DER, 48' left of centerline, 26' AGL/958' MSL. Sign 2067' from DER, 398' right of centerline, 46' AGL/993' MSL. Trmsn towers beginning 5774' from DER, 1675' left of centerline, up to 152' AGL/1074' MSL. Towers beginning 1.1 NM from DER, 2202' right of centerline, up to 266' AGL/1232' MSL. T-I towers beginning 1.1 NM from DER, 776' left of centerline, up to 130' AGL/1097' MSL. Towers beginning 1.2 NM from DER, 604' right of centerline, up to 298' AGL/1250' MSL. **Rwy 36**, REIL 8' from DER, 30' left of centerline, 2' AGL/905' MSL. REIL 9' from DER, 30' right of centerline, 2' AGL/905' MSL. Trees beginning 1993' from DER, 202' left of centerline, up to 964' MSL. Trees beginning 2011' from DER, 318' left of centerline, up to 970' MSL. Tree 2203' from DER, 268' left of centerline, 971' MSL. Tree 2204' from DER, 205' left of centerline, 974' MSL.

ATLANTIC, IA

ATLANTIC MUNI (AIO)

TAKEOFF MINIMUMS AND (OBSTACLE)
DEPARTURE PROCEDURES
AMDT 6A 09155 (FAA)

TAKEOFF MINIMUMS: **Rwy 2**, 300-1½ or std. w/min. climb of 208' per NM to 1400. **Rwy 12**, 400-2½ or std. w/min. climb of 321' per NM to 1700.

DEPARTURE PROCEDURE: **Rwy 12**, climb heading 119° to 1700 before proceeding on course. **Rwy 20**, climb heading 198° to 2300 before proceeding on course. **Rwy 30**, climb heading 299° to 1900 before proceeding on course.

TAKEOFF OBSTACLE NOTES: **Rwy 2**, terrain beginning 6' from DER, from 654' left of centerline to 433' right of centerline, up to 1175' MSL. Trees beginning 120' from DER, 20' right of centerline, up to 75' AGL/1234' MSL. Trees beginning 2991' from DER, 202' left of centerline, up to 75' AGL/1234' MSL. **Rwy 12**, terrain beginning 8' from DER, from 336' left of centerline to 422' right of centerline, up to 1300' MSL. Trees beginning 2175' from DER, 498' right of centerline, up to 75' AGL/1214' MSL. Trees beginning 4525' from DER, 422' right of centerline, up to 75' AGL/1354' MSL. **Rwy 20**, terrain beginning 72' from DER, from 538' left of centerline to 623' right of centerline, up to 1185' MSL. Trees beginning 2157' from DER, 44' left of centerline, up to 75' AGL/1234' MSL. **Rwy 30**, terrain beginning 100' from DER, from 1615' left of centerline to 758' right of centerline, up to 1293' MSL.

AUDUBON, IA

AUDUBON COUNTY (ADU)

TAKEOFF MINIMUMS AND (OBSTACLE)
DEPARTURE PROCEDURES
AMDT 1 93175 (FAA)
TAKEOFF MINIMUMS: **Rwy 32**, 300-1.

AURORA, MO

JERRY SUMNERS SR. AURORA MUNI (2H2)

TAKEOFF MINIMUMS AND (OBSTACLE)
DEPARTURE PROCEDURES
AMDT 1 90067 (FAA)

TAKEOFF MINIMUMS: **Rwy 18**, 300-1 or std. with a min. climb of 400' per NM to 1600.

AVA, MO

AVA BILL MARTIN MEMORIAL (AOV)

TAKEOFF MINIMUMS AND (OBSTACLE)
DEPARTURE PROCEDURES
ORIG 13122 (FAA)

TAKEOFF OBSTACLE NOTES: **Rwy 13**, trees beginning 182' from DER, 254' left of centerline, up to 100' AGL/1319' MSL. Multiple buildings, poles and vehicles on road beginning 512' from DER, left and right of centerline, up to 40' AGL/1379' MSL. Trees beginning 76' from DER, left and right of centerline, up to 100' AGL/1459' MSL. **Rwy 31**, trees beginning 5' from DER, 227' right of centerline, up to 100' AGL/1379' MSL. Trees beginning 210' from DER, 195' left of centerline, up to 100' AGL/1359' MSL. Trees beginning 850' from DER from left to right of centerline, up to 100' AGL/1339' MSL.

TAKEOFF MINIMUMS, (OBSTACLE) DEPARTURE PROCEDURES, AND DIVERSE VECTOR AREA (RADAR VECTORS)

17341

TAKEOFF MINIMUMS, (OBSTACLE) DEPARTURE PROCEDURES, AND DIVERSE VECTOR AREA (RADAR VECTORS)

17341

BELLE PLAINE, IA

BELLE PLAINE MUNI (TZT)
TAKEOFF MINIMUMS AND (OBSTACLE)
DEPARTURE PROCEDURES
AMDT 1 12096 (FAA)

TAKEOFF MINIMUMS: **Rwy 36**, 400-2 or std. w/min. climb of 440' per NM to 1200.

TAKEOFF OBSTACLE NOTES: **Rwy 18**, multiple trees beginning 142' from DER, left and right of centerline, up to 94' AGL/854' MSL. **Rwy 36**, multiple towers, tanks, trees, poles, buildings, grain elevators, and roads beginning 31' from DER, left and right of centerline, up to 174' AGL/954' MSL. Trees beginning 4901' from DER, 962' right of centerline, up to 93' AGL/954' MSL. Tower 1.8 NM from DER, 2320' right of centerline, 207' AGL/1097' MSL.

BLOOMFIELD, IA

BLOOMFIELD MUNI (4K6)
TAKEOFF MINIMUMS AND (OBSTACLE)
DEPARTURE PROCEDURES
ORIG-A 08185 (FAA)

DEPARTURE PROCEDURE: **Rwy 18**, climb runway heading to 1300 before turning.

TAKEOFF OBSTACLE NOTES: **Rwy 18**, building 353' from DER, 306' left of centerline, 30' AGL/915' MSL.

BOLIVAR, MO

BOLIVAR MUNI (M17)
TAKEOFF MINIMUMS AND (OBSTACLE)
DEPARTURE PROCEDURES
ORIG 07186 (FAA)

TAKEOFF MINIMUMS: **Rwy 36**, 200-1¼ or std. w/ min. climb of 252' per NM to 1400.

TAKEOFF OBSTACLE NOTES: **Rwy 18**, east-west road, vehicle and transmission lines and poles beginning 627' from DER, up to 40' AGL/1138' MSL. Multiple trees beginning 667' from DER, 6' left of centerline, up to 75' AGL/1148' MSL. Silo 1059' from DER, 677' left of centerline, 100' AGL/1200' MSL. Multiple trees beginning 147' from DER, 39' right of centerline, up to 75' AGL/1157' MSL. **Rwy 36**, transmission lines and poles beginning 1208' from DER, 189' left of centerline, up to 40' AGL/1137' MSL. East-west transmission lines and poles beginning 1925' from DER, up to 50' AGL/1165' MSL. Multiple trees beginning 659' from DER, 58' right of centerline, up to 75' AGL/1201' MSL. Tree 5471' from DER, 1766' left of centerline, 100' AGL/1269' MSL.

BOONE, IA

BOONE MUNI (BNW)
TAKEOFF MINIMUMS AND (OBSTACLE)
DEPARTURE PROCEDURES
AMDT 5 09015 (FAA)

TAKEOFF MINIMUMS: **Rwys 2, 20**, NA-Environmental. TAKEOFF OBSTACLE NOTES: **Rwy 15**, tree 3565' from DER, 816' right of centerline, 100' AGL/1259' MSL. **Rwy 33**, tree 1442' from DER, 631' left of centerline, 100' AGL/1259' MSL. Vehicle on road 561' from DER, 573' right of centerline, 15' AGL/1174' MSL. Tank 3135' from DER, 1335' right of centerline, 140' AGL/1287' MSL.

BOONVILLE, MO

JESSE VIERTEL MEMORIAL (VER)
TAKEOFF MINIMUMS AND (OBSTACLE)
DEPARTURE PROCEDURES
ORIG 07130 (FAA)

TAKEOFF OBSTACLE NOTES: **Rwy 18**, multiple trees beginning 368' from DER, 383' left of centerline, up to 80' AGL/761' MSL. Road and vehicle 1232' from DER, on centerline, 17' AGL/746' MSL. Multiple trees beginning 500' from DER, 109' right of centerline, up to 80' AGL/786' MSL. **Rwy 36**, multiple trees and pole beginning 701' from DER, 67' left of centerline, up to 100' AGL/810' MSL. Multiple trees beginning 200' from DER, 334' right of centerline, up to 80' AGL/794' MSL.

BOWLING GREEN, MO

BOWLING GREEN MUNI (H19)
TAKEOFF MINIMUMS AND (OBSTACLE)
DEPARTURE PROCEDURES
ORIG 83132 (FAA)
TAKEOFF MINIMUMS: **Rwy 31**, 300-1.

BRANSON, MO

BRANSON (BBG)
TAKEOFF MINIMUMS AND (OBSTACLE)
DEPARTURE PROCEDURES
ORIG 09127 (FAA)
DEPARTURE PROCEDURE: **Rwy 32**, climb heading 323° to 2000 before turning left.
TAKEOFF OBSTACLE NOTES: **Rwy 14**, numerous trees beginning 1214' from DER, 4' right of centerline, up to 100' AGL/1449' MSL. **Rwy 32**, numerous trees beginning 77' from DER, 452' left of centerline, up to 100' AGL/1289' MSL.

M GRAHAM CLARK DOWNTOWN (PLK)

TAKEOFF MINIMUMS AND (OBSTACLE)
DEPARTURE PROCEDURES
AMDT 2A 15204 (FAA)
TAKEOFF MINIMUMS: **Rwy 30**, std. w/min. climb of 244' per NM to 1800 or 1400-3 for climb in visual conditions. DEPARTURE PROCEDURE: **Rwy 12**, climb heading 117° to 1600 before proceeding on course. **Rwy 30**, obtain ATC approval for climb in visual conditions when requesting IFR clearance. Climb in visual conditions to cross M Graham Clark downtown airport at or above 2200 before proceeding on course.
TAKEOFF OBSTACLE NOTES: **Rwy 12**, trees beginning 796' from DER, 468' right of centerline, up to 50' AGL/989' MSL.

BRANSON WEST, MO

BRANSON WEST MUNI-EMERSON FIELD (FWB)
TAKEOFF MINIMUMS AND (OBSTACLE)
DEPARTURE PROCEDURES
ORIG 11349 (FAA)

TAKEOFF OBSTACLE NOTES: **Rwy 3**, trees beginning 167' from DER, left and right of centerline, up to 100' AGL/1479' MSL. Vehicles on road beginning 22' from DER, from 15' left of centerline, up to 15' AGL/1394' MSL. Vehicle on road 1485' from DER, 615' right of centerline, 15' AGL/1394' MSL. **Rwy 21**, trees beginning 230' from DER, left and right of centerline, up to 100' AGL/1419' MSL. Power lines beginning 2501' from DER, 788' left of centerline, up to 100' AGL/1379' MSL.

TAKEOFF MINIMUMS, (OBSTACLE) DEPARTURE PROCEDURES, AND DIVERSE VECTOR AREA (RADAR VECTORS)

17341

TAKEOFF MINIMUMS, (OBSTACLE) DEPARTURE PROCEDURES, AND
DIVERSE VECTOR AREA (RADAR VECTORS)

17341

BROOKFIELD, MO

NORTH CENTRAL MISSOURI RGNL
(MO8)

TAKEOFF MINIMUMS AND (OBSTACLE)
DEPARTURE PROCEDURES
AMDT 3 16091 (FAA)

TAKEOFF OBSTACLE NOTES: **Rwy 18**, terrain 2' from DER, 498' left of centerline, 830' MSL. Fence 3' from DER, 398' left of centerline, 7' AGL/830' MSL. Poles beginning 889' from DER, 458' left of centerline, up to 29' AGL/855' MSL. Tree 1358' from DER, 110' left of centerline, 50' AGL/864' MSL. Trees beginning 1436' from DER, 387' right of centerline, up to 88' AGL/872' MSL. Tree 2069' from DER, 586' left of centerline, 89' AGL/878' MSL. **Rwy 36**, bldg 4' from DER, 428' right of centerline, 18' AGL/858' MSL. Tree 5' from DER, 152' left of centerline, 15' AGL/847' MSL. Tree 10' from DER, 162' left of centerline, 17' AGL/848' MSL. Tree 127' from DER, 202' left of centerline, 30' AGL/856' MSL. Tree 140' from DER, 203' left of centerline, 33' AGL/859' MSL. Trees beginning 163' from DER, 208' left of centerline, up to 48' AGL/867' MSL. Tree 464' from DER, 281' right of centerline, 70' AGL/877' MSL. Tree 500' from DER, 365' right of centerline, 75' AGL/887' MSL. Trees beginning 522' from DER, 484' left of centerline, up to 76' AGL/876' MSL. Trees and pole beginning 541' from DER, 288' right of centerline, up to 84' AGL/891' MSL. Tree 858' from DER, 647' left of centerline, 86' AGL/878' MSL. Tree 1478' from DER, 492' right of centerline, 67' AGL/892' MSL. Trees beginning 1485' from DER, 499' right of centerline, up to 56' AGL/893' MSL.

BURLINGTON, IA

SOUTHEAST IOWA RGNL (BRL)

TAKEOFF MINIMUMS AND (OBSTACLE)
DEPARTURE PROCEDURES
AMDT 1 92233 (FAA)

TAKEOFF MINIMUMS: **Rwy 36**, 300-1.
DEPARTURE PROCEDURE: **Rwys 30, 36**, climb
runway heading to 1500 before turning.

BUTLER, MO

BUTLER MEMORIAL (BUM)

TAKEOFF MINIMUMS AND (OBSTACLE)
DEPARTURE PROCEDURES
ORIG 11293 (FAA)

TAKEOFF MINIMUMS: **Rwy 18**, 500-3 or std. w/min.
climb of 216' per NM to 1500.
TAKEOFF OBSTACLE NOTES: **Rwy 18**, tower 2.5 NM
from DER, 1636' right of centerline, 493' AGL/1293'
MSL. Trees beginning at DER, 317' left and right of
centerline, up to 100' AGL/992' MSL. Buildings
beginning 44' from DER, 350' right of centerline, up to
19' AGL/910' MSL. Terrain beginning 31' from DER,
104' left and right of centerline, up to 909' MSL. **Rwy
36**, trees beginning 1254' from DER, left and right of
centerline, up to 100' AGL/970' MSL. Vehicle on road
beginning at DER, 350' left of centerline, 15' AGL/885'
MSL. Terrain beginning 192' from DER, 37' left and
right of centerline, up to 886' MSL.

CABOOL, MO

CABOOL MEMORIAL (TVB)

TAKEOFF MINIMUMS AND (OBSTACLE)
DEPARTURE PROCEDURES
AMDT 2 10350 (FAA)

TAKEOFF MINIMUMS: **Rwy 3**, 300-2½ or std. w/min.
climb of 453' per NM to 1700. **Rwy 21**, 500-3 or std. w/
min. climb of 298' per NM to 1900.
DEPARTURE PROCEDURE: **Rwy 3**, climb heading 030°
to 1800 before turning right. **Rwy 21**, climb heading 210°
to 2000 before turning left.
TAKEOFF OBSTACLE NOTES: **Rwy 3**, trees beginning
25' from DER, 159' left of centerline up to 100' AGL/1328'
MSL. Trees beginning 33' from DER, 312' right of
centerline up to 100' AGL/1324' MSL. Vehicle on road 33'
from DER, 99' right of centerline 15' AGL/1239' MSL.
Railroad 27' from DER, 283' left of centerline 23'
AGL/1251' MSL. **Rwy 21**, trees beginning 50' from DER,
353' left of centerline up to 100' AGL/1334' MSL. Trees
beginning 189' from DER, 424' right of centerline up to
100' AGL/1328' MSL. Vehicle on road 61' from DER, 111'
left of centerline 15' AGL/1236' MSL.

CAMERON, MO

CAMERON MEMORIAL (EZZ)

TAKEOFF MINIMUMS AND (OBSTACLE)
DEPARTURE PROCEDURES
ORIG 10098 (FAA)

TAKEOFF OBSTACLE NOTES: **Rwy 17**, trees beginning
31' from DER, 287' left of centerline, up to 7' AGL/1024'
MSL. Trees beginning 84' from DER, 428' right of
centerline, up to 61' AGL/1041' MSL. **Rwy 35**, trees and
rising terrain beginning 36' from DER, 113' left of
centerline, up to 30' AGL/1077' MSL. Trees and rising
terrain beginning 79' from DER, 119' right of centerline,
up to 57' AGL/1105' MSL. Buildings and stacks beginning
711' from DER, 619' right of centerline, up to 57'
AGL/1082' MSL. Train on railroad tracks 1636' from DER,
left and right of centerline, 23' AGL/1085' MSL.

07 DEC 2017 to 04 JAN 2018

07 DEC 2017 to 04 JAN 2018

TAKEOFF MINIMUMS, (OBSTACLE) DEPARTURE PROCEDURES, AND
DIVERSE VECTOR AREA (RADAR VECTORS)

17341

TAKEOFF MINIMUMS, (OBSTACLE) DEPARTURE PROCEDURES, AND DIVERSE VECTOR AREA (RADAR VECTORS)

17341

CAMDENTON, MO

CAMDENTON MEMORIAL-LAKE RGNL
(OZS)

TAKEOFF MINIMUMS AND (OBSTACLE)
DEPARTURE PROCEDURES

AMDT 2A 15176 (FAA)

TAKEOFF OBSTACLE NOTES: **Rwy 15**, trees beginning 2' from DER, 385' right of centerline, up to 63' AGL/1103' MSL. Trees beginning 25' from DER, 228' left of centerline, up to 53' AGL/1072' MSL. Tree 36' from DER, 391' right of centerline, 62' AGL/1102' MSL. REIL beginning 39' from DER, left and right of centerline, up to 5' AGL/1061' MSL. Tree 73' from DER, 385' right of centerline, 63' AGL/1103' MSL. Pole 230' from DER, 502' right of centerline, 38' AGL/1078' MSL. Vehicles on roadway beginning 88' from DER, 419' right of centerline, up to 15' AGL/1074' MSL. Tree 1182' from DER, 335' right of centerline 100' AGL/1100' MSL. **Rwy 33**, trees beginning 9' from DER, 277' right of centerline, up to 43' AGL/1083' MSL. REIL 40' from DER, 76' left and right of centerline, 5' AGL/1054' MSL. Fuel tank 72' from DER, 263' left of centerline, 37' AGL/1077' MSL. Buildings and poles beginning 142' from DER, 142' left of centerline, 46' AGL/1086' MSL. Terrain beginning 244' from DER, 371' left of centerline, up to 1062' MSL. Fence 272' from DER, 258' left of centerline 5' AGL/1059' MSL. Poles beginning 396' from DER, 398' left of centerline up to 60' AGL/1101' MSL. Pole 575' from DER, 451' right of centerline, 25' AGL/1070' MSL. Trees beginning 432' from DER, 130' left of centerline, up to 52' AGL/1112' MSL. Poles beginning 677' from DER, 65' right of centerline, up to 32' AGL/1072' MSL. Trees beginning 1507' from DER 515' left of centerline, up to 65' AGL/1122' MSL. Tree 1925' from DER, 42' right of centerline; 70' AGL/1114' MSL. Tree 4000' from DER 1138' right of centerline, 100' AGL/1159' MSL.

CAPE GIRARDEAU, MO

CAPE GIRARDEAU RGNL (CGI)

TAKEOFF MINIMUMS AND (OBSTACLE)
DEPARTURE PROCEDURES

AMDT 9 13178 (FAA)

TAKEOFF MINIMUMS: **Rwy 10**, 300-1½ or std. w/min. climb of 250' per NM to 600, or alternatively, with std. takeoff minimums and a normal 200' per NM climb gradient. Takeoff must occur no later than 2100' prior to DER. **Rwy 20**, 300-1½ or std. w/min. climb of 305' per NM to 600.

DEPARTURE PROCEDURE: **Rwy 2**, climbing right turn heading 080° and CGI VOR/DME R-039 to 2600 before proceeding on course. **Rwy 28**, climb on heading 288° to 1200 before proceeding on course.

TAKEOFF OBSTACLE NOTES: **Rwy 2**, sign 31' from DER, 168' right of centerline, 6' AGL/337' MSL. Bush, fence and trees beginning 3' from DER, 454' left of centerline, up to 17' AGL/348' MSL. Vehicle on roadway 738' from DER, 678' right of centerline, up to 17' AGL/355' MSL. Poles, signs, and trees beginning 979' from DER, 27' right of centerline, up to 62' AGL/393' MSL. Poles beginning 1234' from DER, 296' left of centerline, up to 48' AGL/379' MSL. Building 2658' from DER, 1186' right of centerline, 104' AGL/439' MSL. **Rwy 10**, poles beginning 1394' from DER, 803' left of centerline, up to 45' AGL/381' MSL. Trees beginning 2576' from DER, 772' right of centerline, up to 89' AGL/425' MSL. Cranes and trees beginning 3291' from DER, 213' left of centerline, up to 115' AGL/461' MSL. Trees beginning 4060' from DER, 213' right of centerline, up to 116' AGL/480' MSL. Trees beginning 4954' from DER, 741' left of centerline, up to 131' AGL/527' MSL. **Rwy 20**, signs, bushes and trees beginning 20' from DER, 203' left of centerline, up to 36' AGL, 372' MSL. Pole and trees beginning 1408' from DER, 369' right of centerline, up to 67' AGL/403' MSL. Trees beginning 3990' from DER, 510' left of centerline, up to 120' AGL/531' MSL. Trees beginning 5340' from DER, 360' right of centerline, up to 126' AGL/541' MSL. **Rwy 28**, trees beginning 283' from DER, 533' left of centerline, up to 21' AGL/354' MSL.

CARROLL, IA

ARTHUR N NEU (CIN)

TAKEOFF MINIMUMS AND (OBSTACLE)
DEPARTURE PROCEDURES

AMDT 1 12320 (FAA)

TAKEOFF OBSTACLE NOTES: **Rwy 3**, REIL 40' from DER, left and right of centerline, 2' AGL/1202' MSL. Vehicles on road beginning 167' from DER, 417' right of centerline, up to 15' AGL/1219' MSL. Trees beginning 339' from DER, left and right of centerline, up to 25' AGL/1221' MSL. Poles beginning 1406' from DER, 271' left of centerline, up to 45' AGL/1250' MSL. Silos beginning 1583' from DER, 791' left of centerline, up to 60' AGL/1262' MSL. **Rwy 13**, building 1483' from DER, 854' left of centerline, 30' AGL/1243' MSL. **Rwy 21**, vehicles on road beginning 319' from DER, 238' left of centerline, up to 15' AGL/1215' MSL. Building 2035' from DER, 1019' right of centerline, 40' AGL/1258' MSL. Trees beginning 2117' from DER, 722' right of centerline, up to 50' AGL/1351' MSL. **Rwy 31**, rising terrain beginning 134' from DER, 295' left of centerline, up to 1213' MSL. Tree 1112' from DER, 462' left of centerline, 110' AGL/1294' MSL. Multiple trees beginning 2859' from DER, 214' right of centerline, up to 90' AGL/1333' MSL. Poles beginning 3150' from DER, 150' right of centerline, up to 45' AGL/1299' MSL.

TAKEOFF MINIMUMS, (OBSTACLE) DEPARTURE PROCEDURES, AND DIVERSE VECTOR AREA (RADAR VECTORS)

17341

TAKEOFF MINIMUMS, (OBSTACLE) DEPARTURE PROCEDURES, AND DIVERSE VECTOR AREA (RADAR VECTORS)

17341

CARUTHERSVILLE, MO

CARUTHERSVILLE MEMORIAL (M05)

TAKEOFF MINIMUMS AND (OBSTACLE)

DEPARTURE PROCEDURES

ORIG-A 16147 (FAA)

TAKEOFF MINIMUMS: **Rwy 36**, 300-2 or std. with a min. climb of 256' per NM to 600.

TAKEOFF OBSTACLE NOTES: **Rwy 18**: fence beginning 53' from DER, 353' left of centerline, up to 5' AGL/271' MSL. Stack and buildings beginning 307' from DER, 435' left of centerline, up to 35' AGL/301' MSL. Building 845' from DER, 532' left of centerline, 59' AGL/324' MSL. Tree 1030' from DER, 278' left of centerline, 66' AGL/332' MSL. Trees beginning 1126' from DER, 213' left of centerline, up to 80' AGL/346' MSL. Trees beginning 1138' from DER, 71' right of centerline, up to 70' AGL/336' MSL. **Rwy 36**: poles beginning 169' from DER, 456' right of centerline, up to 29' AGL/296' MSL. Building 294' from DER, 404' left of centerline, 10' AGL/277' MSL. Tree 518' from DER, 297' left of centerline, 15' AGL/283' MSL. Trees and poles beginning 634' from DER, 231' left of centerline, up to 76' AGL/344' MSL. Poles beginning 635' from DER, 295' right of centerline, up to 33' AGL/301' MSL. Poles beginning 637' from DER, 234' right of centerline, up to 34' AGL/302' MSL. Trees, buildings, and poles beginning 676' from DER, 241' left of centerline, up to 84' AGL/351' MSL. Tree 679' from DER, 286' right of centerline, 49' AGL/317' MSL. Tree 681' from DER, 516' right of centerline, 68' AGL/336' MSL. Trees, building, and poles beginning 737' from DER, 6' right of centerline, up to 75' AGL/342' MSL. Tower 1 NM from DER, 565' right of centerline, 207' AGL/475' MSL.

CASSVILLE, MO

CASSVILLE MUNI (94K)

TAKEOFF MINIMUMS AND (OBSTACLE)

DEPARTURE PROCEDURES

AMDT 1 13234 (FAA)

TAKEOFF OBSTACLE NOTES: **Rwy 9**, trees beginning 1487' from DER, 71' right of centerline, up to 71' AGL/1528' MSL. Trees beginning 1487' from DER, 40' left of centerline, up to 60' AGL/1537' MSL. Tower 4324' from DER, 1224' left of centerline, 140' AGL/1600' MSL. Tank 4669' from DER, 1209' left of centerline, 136' AGL/1616' MSL. Terrain 61' from DER, 275' left of centerline, 1475' MSL. Poles beginning 311' from DER, 49' right of centerline, up to 43' AGL/1510' MSL. Poles beginning 649' from DER, 148' left of centerline, up to 43' AGL/1521' MSL. Flaggpole 1316' from DER, 751' left of centerline, 43' AGL/1548' MSL. Buildings beginning 397' from DER, 435' left of centerline, up to 40' AGL/1497' MSL. **Rwy 27**, trees beginning 755' from DER, 180' right of centerline, up to 61' AGL/1604' MSL. Trees beginning 709' from DER, 80' left of centerline, up to 60' AGL/1543' MSL. Terrain 125' from DER, 472' left of centerline, 1484' MSL. Poles beginning 636' from DER, 385' right of centerline, up to 43' AGL/1505' MSL. Poles beginning 665' from DER, 320' left of centerline, up to 43' AGL/1516' MSL. Bushes beginning 183' from DER, 339' left of centerline, up to 6' AGL/1490' MSL.

CEDAR RAPIDS, IA

THE EASTERN IOWA (CID)

TAKEOFF MINIMUMS AND (OBSTACLE)

DEPARTURE PROCEDURES

AMDT 4 10266 (FAA)

TAKEOFF OBSTACLE NOTES: **Rwy 9**, building 354' from DER, 563' right of centerline, 22' AGL/873' MSL. Pole 678' from DER, 642' right of centerline, 33' AGL/884' MSL. Obstruction light on building 1133' from DER, 596' right of centerline, 41' AGL/890' MSL. Antennas beginning 491' from DER, 314' left of centerline, up to 28' AGL/879' MSL. **Rwy 13**, vehicles on road 961' from DER, 709' left of centerline, up to 15' AGL/874' MSL. **Rwy 27**, poles beginning 1338' from DER, 700' right of centerline, up to 34' AGL/895' MSL. **Rwy 31**, vehicles on road beginning 28' from DER, left and right of centerline, up to 17' AGL/876' MSL. Tree 3464' from DER, 180' right of centerline, 100' AGL/979' MSL.

CENTERVILLE, IA

CENTERVILLE MUNI (TVK)

TAKEOFF MINIMUMS AND (OBSTACLE)

DEPARTURE PROCEDURES

ORIG 10154 (FAA)

TAKEOFF OBSTACLE NOTES: **Rwy 16**, trees beginning 37' from DER, 282' left of centerline, up to 25' AGL/1034' MSL. Trees beginning 86' from DER, 213' right of centerline, up to 20' AGL/1031' MSL.

CHARITON, IA

CHARITON MUNI (CNC)

TAKEOFF MINIMUMS AND (OBSTACLE)

DEPARTURE PROCEDURES

ORIG 09351 (FAA)

TAKEOFF MINIMUMS: **Rwy 10**, std. w/ min. climb of 223' per NM to 1700 or 900-2½ for climb in visual conditions. DEPARTURE PROCEDURE: **Rwy 10**, for climb in visual conditions cross Chariton Muni airport at or above 1800 MSL before proceeding on course. TAKEOFF OBSTACLE NOTES: **Rwy 10**, tower 2.62 NM from DER, 2173' left of centerline, 470' AGL/1480' MSL. **Rwy 17**, hangar 13' from DER, 429' left of centerline, 25' AGL/1084' MSL. Vehicle on road beginning 506' from DER, from left to right of centerline, up to 15' AGL/1074' MSL. Tree 2720' from DER, 451' right of centerline, 100' AGL/1159' MSL. **Rwy 35**, vehicle on road 17' from DER, 421' left of centerline, 15' AGL/1054' MSL.

CHARLES CITY, IA

NORTHEAST IOWA RGNL (CCY)

TAKEOFF MINIMUMS AND (OBSTACLE)

DEPARTURE PROCEDURES

ORIG 09015 (FAA)

TAKEOFF MINIMUMS: **Rwys 4, 17, 22, 35**, NA-Environmental.

TAKEOFF OBSTACLE NOTES: **Rwy 12**, trees beginning 1002' from DER, 351' right of centerline, up to 100' AGL/1209' MSL. **Rwy 30**, trees beginning 1804' from DER, 621' right of centerline, up to 100' AGL/1229' MSL.

TAKEOFF MINIMUMS, (OBSTACLE) DEPARTURE PROCEDURES, AND DIVERSE VECTOR AREA (RADAR VECTORS)

17341

TAKEOFF MINIMUMS, (OBSTACLE) DEPARTURE PROCEDURES, AND DIVERSE VECTOR AREA (RADAR VECTORS)

17341

CHARLESTON, MO

MISSISSIPPI COUNTY (CHQ)

TAKEOFF MINIMUMS AND (OBSTACLE)
DEPARTURE PROCEDURES
ORIG 13346 (FAA)

TAKEOFF OBSTACLE NOTES: **Rwy 18**, trees beginning 404' from DER, 380' left of centerline, up to 80' AGL/394' MSL. Trees beginning 2766' from DER, 670' left of centerline, up to 80' AGL/394' MSL. Trees beginning 2772' from DER, 318' right of centerline, up to 80' AGL/394' MSL. **Rwy 36**, vehicles on road beginning 511' from DER, left and right of centerline, up to 15' AGL/329' MSL. Trees beginning 2045' from DER, 875' right of centerline, up to 80' AGL/394' MSL.

CHEROKEE, IA

CHEROKEE COUNTY RGNL (CKP)

TAKEOFF MINIMUMS AND (OBSTACLE)
DEPARTURE PROCEDURES
AMDT 3 09127 (FAA)

TAKEOFF MINIMUMS: **Rwys 1,19**, NA - environmental. **Rwy 36**, 300 -1¼ or std. w/ min. climb of 373' per NM to 1600.

DEPARTURE PROCEDURE: **Rwy 18**, climb heading 178° to 1700 before proceeding on course. **Rwy 36**, climb heading 358° to 1900 before proceeding on course.

TAKEOFF OBSTACLE NOTES: **Rwy 18**, rising terrain, buildings, vehicles on road, poles, signs, trees beginning at DER, 305' left of centerline, up to 65' AGL/1298' MSL. Trains on railroad beginning at DER, 348' right of centerline, up to 23' AGL/1242' MSL. **Rwy 36**, vehicles on road, trees beginning at DER, 416' left of centerline, up to 65' AGL/1284' MSL. Row of trees 726' from DER, from left to right of centerline, up to 65' AGL/1284' MSL. Building 741' from DER, 557' right of centerline, 24' AGL/1239' MSL. Tower 5267' from DER, 382' left of centerline, 160' AGL/1390' MSL. Tower 6206' from DER, 171' right of centerline, 160' AGL/1440' MSL.

CHILLICOTHE, MO

CHILLICOTHE MUNI (CHT)

TAKEOFF MINIMUMS AND (OBSTACLE)
DEPARTURE PROCEDURES
ORIG 09183 (FAA)

TAKEOFF MINIMUMS: **Rwys 2, 20**, NA-Environmental. TAKEOFF OBSTACLE NOTES: **Rwy 14**, trees beginning 287' from DER, 261' left of centerline, up to 150' AGL/884' MSL. Vehicle on road 542' from DER, 454' right of centerline, 15' AGL/779' MSL. Antenna 1338' from DER, 349' left of centerline, 46' AGL/806' MSL. Tree 3217' from DER, 1285' right of centerline, 150' AGL/884' MSL. **Rwy 32**, trees beginning 12' from DER, 63' left of centerline, up to 150' AGL/898' MSL. Pole 142' from DER, 368' left of centerline, 43' AGL/792' MSL. Trees beginning 164' from DER, 129' right of centerline, up to 150' AGL/924' MSL.

CLARINDA, IA

SCHENCK FIELD (ICL)

TAKEOFF MINIMUMS AND (OBSTACLE)
DEPARTURE PROCEDURES
AMDT 1A 17173 (FAA)

TAKEOFF MINIMUMS: **Rwys 13, 31**, NA - environmental. DEPARTURE PROCEDURE: **Rwy 2**, climb on heading 020° to 2400 before turning.

TAKEOFF OBSTACLE NOTES: **Rwy 2**, tree 48' from DER, 486' right of centerline, 1000' MSL. Transmission tower 104' from DER, 362' right of centerline, 1014' MSL. Pole 144' from DER, 279' left of centerline, up to 38' AGL/1025' MSL. Tree 2290' from DER, 481' right of centerline, 1057' MSL. Elevator 2672' from DER, 206' right of centerline, 1079' MSL. **Rwy 20**, vehicles on road beginning 196' from DER, 382' right of centerline, up to 15' AGL/1023' MSL. Vehicles on road beginning 365' from DER, 535' left of centerline, 15' AGL/1017' MSL. Vehicles on road beginning 422' from DER, 400' left of centerline, 15' AGL/1018' MSL. Pole 470' from DER, 5' right of centerline, up to 83' AGL/1073' MSL. Vehicles on road beginning 491' from DER, 93' left of centerline, up to 1005' MSL. Trees beginning 1071' from DER, 44' left of centerline, up to 1026' MSL. Tree 1398' from DER, 187' left of centerline, 1028' MSL. Pole 1716' from DER, 481' left of centerline, up to 1037' MSL. Trees beginning 2144' from DER, 23' left of centerline, up to 1050' MSL.

CLARION, IA

CLARION MUNI (CAV)

TAKEOFF MINIMUMS AND (OBSTACLE)
DEPARTURE PROCEDURES
AMDT 1 10042 (FAA)

TAKEOFF OBSTACLE NOTES: **Rwy 14**, tree 345' from DER, 551' left of centerline, 100' AGL/1264' MSL. **Rwy 32**, trees beginning 134' from DER, 396' left of centerline, up to 100' AGL/1254' MSL. Vehicle on road 333' from DER, 572' right of centerline, up to 15' AGL/1174' MSL.

CLINTON, IA

CLINTON MUNI (CWI)

TAKEOFF MINIMUMS AND (OBSTACLE)
DEPARTURE PROCEDURES
AMDT 1 10126 (FAA)

TAKEOFF OBSTACLE NOTES: **Rwy 3**, trees beginning 34' from DER, 393' left of centerline, up to 20' AGL/711' MSL. Obstruction light on DME 387' from DER, 264' left of centerline, 11' AGL/720' MSL. **Rwy 14**, vehicle on road 56' from DER, 483' right of centerline, 15' AGL/694' MSL. Vehicle on road 391' from DER, 3' left of centerline, 15' AGL/702' MSL. **Rwy 21**, tree 405' from DER, 500' left of centerline, 16' AGL/706' MSL. **Rwy 32**, vehicle on road 38' from DER, 319' left of centerline, 15' AGL/716' MSL. Fence 169' from DER, 192' right of centerline, 8' AGL/706' MSL. Vehicle on road 508' from DER, 8' left of centerline, 15' AGL/718' MSL. Trees beginning 1302' from DER, 448' left of centerline, up to 68' AGL/767' MSL. Antenna on hopper 1315' from DER, 850' left of centerline, 82' AGL/781' MSL.

07 DEC 2017 to 04 JAN 2018

07 DEC 2017 to 04 JAN 2018

TAKEOFF MINIMUMS, (OBSTACLE) DEPARTURE PROCEDURES, AND DIVERSE VECTOR AREA (RADAR VECTORS)

17341

TAKEOFF MINIMUMS, (OBSTACLE) DEPARTURE PROCEDURES, AND DIVERSE VECTOR AREA (RADAR VECTORS)

17341

CLINTON, MO

CLINTON RGNL (GLY)

TAKEOFF MINIMUMS AND (OBSTACLE)
DEPARTURE PROCEDURES

AMDT 1 14093 (FAA)

TAKEOFF OBSTACLE NOTES: **Rwy 4**, sign 15' from DER, 124' left of centerline, 5' AGL/824' MSL. Trees 100' from DER, 370' right of centerline. Trees beginning 101' from DER, 370' right of centerline, up to 79' AGL/878' MSL. Trees beginning 456' from DER, 56' right of centerline, up to 26' AGL/848' MSL. Tree 662' from DER, 30' left of centerline, 22' AGL/844' MSL. Tree 892' from DER, 296' left of centerline, 23' AGL/845' MSL. Trees beginning 1624' from DER, 853' right of centerline, 78' AGL/888' MSL. Trees beginning 1991' from DER, 700' left of centerline, up to 56' AGL/878' MSL. **Rwy 18**, road 8' from DER, left to right of centerline, 15' AGL/819' MSL. Terrain 73' from DER, 315' left of centerline, 808' MSL. Trees beginning 183' from DER, 306' left of centerline, up to 84' AGL/892' MSL. Trees beginning 434' from DER, 571' right of centerline, up to 52' AGL/855' MSL. Trees beginning 1396' from DER, 632' right of centerline, up to 69' AGL/872' MSL. Trees beginning 1725' from DER, 576' right of centerline, up to 64' AGL/848' MSL. Bush 183' from DER, 306' left of centerline, 6' AGL/809' MSL. **Rwy 22**, tree 19' from DER, 349' left of centerline, 26' AGL/845' MSL. Trees beginning 189' from DER, 213' left of centerline, up to 54' AGL/864' MSL. Trees and poles beginning 640' from DER, left and right of centerline, up to 67' AGL/887' MSL. Powerlines beginning 1289' from DER, left and right of centerline, up to 46' AGL/866' MSL. **Rwy 36**, tree 38' from DER, 505' right of centerline, 23' AGL/832' MSL. Trees beginning 153' from DER, 414' right of centerline, up to 79' AGL/888' MSL. Trees, terrain and buildings beginning 106' from DER, 219' left of centerline, up to 69' AGL/878' MSL. Bushes beginning 221' from DER, 431' left of centerline, up to 14' AGL/823' MSL.

COLUMBIA, MO

COLUMBIA RGNL (COU)

TAKEOFF MINIMUMS AND (OBSTACLE)
DEPARTURE PROCEDURES

AMDT 6 17285 (FAA)

DEPARTURE PROCEDURE: **Rwy 31**, climb heading 315° to 1900 before turning right.

TAKEOFF OBSTACLE NOTES: **Rwy 2**, trees beginning 71' from DER, 13' right of centerline, up to 110' AGL/993' MSL. Trees beginning 93' from DER, 97' left of centerline, up to 110' AGL/993' MSL. Trees beginning 1548' from DER, 9' right of centerline, up to 110' AGL/996' MSL. **Rwy 13**, trees beginning 2' from DER, 5' left of centerline, up to 110' AGL/993' MSL. Trees beginning 51' from DER, 113' right of centerline, up to 110' AGL/993' MSL. Trees beginning 601' from DER, 32' right of centerline, up to 110' AGL/996' MSL. **Rwy 20**, trees beginning 32' from DER, 22' left of centerline, up to 110' AGL/993' MSL. Trees beginning 118' from DER, 87' right of centerline, up to 110' AGL/990' MSL. Trees beginning 1400' from DER, 86' right of centerline, up to 110' AGL/993' MSL. Trees beginning 1965' from DER, 83' right of centerline, up to 110' AGL/996' MSL. **Rwy 31**, trees beginning 92' from DER, 6' left of centerline, up to 110' AGL/996' MSL. Trees beginning 191' from DER, 0' of centerline, up to 110' AGL/996' MSL.

CORNING, IA

CORNING MUNI (CRZ)

TAKEOFF MINIMUMS AND (OBSTACLE)
DEPARTURE PROCEDURES

AMDT 2 07354 (FAA)

TAKEOFF OBSTACLE NOTES: **Rwy 18**, road w/ vehicle, 159' from DER, on centerline, 23' AGL/1262' MSL. Trees beginning 161' from DER, 110' left of centerline, up to 100 AGL/1329' MSL. **Rwy 36**, trees beginning 945' from DER, 319' left of centerline, up to 100' AGL/1339' MSL. Tree 1212' from DER, 653' right of centerline, 100' AGL/1309' MSL.

COUNCIL BLUFFS, IA

COUNCIL BLUFFS MUNI (CBF)

TAKEOFF MINIMUMS AND (OBSTACLE)
DEPARTURE PROCEDURES

AMDT 1 11125 (FAA)

TAKEOFF OBSTACLE NOTES: **Rwy 18**, trees 73' from DER, 463' right of centerline, 100' AGL/1269' MSL. **Rwy 32**, trees beginning 782' from DER, 91' right of centerline, 100' AGL/1299' MSL. Trees 1310' from DER, 206' left of centerline, 100' AGL/1329' MSL. **Rwy 36**, trees 1196' from DER, 453' right of centerline, 100' AGL/1279' MSL.

CRESCO, IA

ELLEN CHURCH FIELD (CJJ)

TAKEOFF MINIMUMS AND (OBSTACLE)
DEPARTURE PROCEDURES

ORIG 88182 (FAA)

DEPARTURE PROCEDURE: **Rwys 15, 33**, climb runway heading to 1700 before turning.

CRESTON, IA

CRESTON MUNI (CSQ)

TAKEOFF MINIMUMS AND (OBSTACLE)
DEPARTURE PROCEDURES

AMDT 2 07018 (FAA)

TAKEOFF MINIMUMS: **Rwys 4, 22**, NA-Environmental. TAKEOFF OBSTACLE NOTES: **Rwy 16**, multiple trees and terrain beginning 152' from DER, 128' left of centerline, up to 70' AGL/1360' MSL. Multiple bushes and terrain beginning 91' from DER, 93' right of centerline, up to 10' AGL/1313' MSL. Pole 242' from DER, 199' right of centerline, 7' AGL/1301' MSL. **Rwy 34**, terrain 561' from DER, 17' left of centerline, 1309' MSL. Terrain beginning 169' from DER, 236' right of centerline, up to 1309' MSL. Road/vehicle 756' from DER, on centerline, 15' AGL/1314' MSL.

07 DEC 2017 to 04 JAN 2018

07 DEC 2017 to 04 JAN 2018

TAKEOFF MINIMUMS, (OBSTACLE) DEPARTURE PROCEDURES, AND DIVERSE VECTOR AREA (RADAR VECTORS)

17341

TAKEOFF MINIMUMS, (OBSTACLE) DEPARTURE PROCEDURES, AND DIVERSE VECTOR AREA (RADAR VECTORS)

17341

CUBA, MO

CUBA MUNI (UBX)

TAKEOFF MINIMUMS AND (OBSTACLE)
DEPARTURE PROCEDURES

AMDT 2 11013 (FAA)

TAKEOFF OBSTACLE NOTES: **Rwy 18**, terrain, trees, and power poles beginning at DER, left and right of centerline, up to 100' AGL/1139' MSL. Trees 2224' from DER, 859' left of centerline, 100' AGL/1159' MSL. **Rwy 36**, terrain, trees, power poles, and cars on roadway beginning at DER, left and right of centerline, up to 100' AGL/1145' MSL.

DAVENPORT, IA

DAVENPORT MUNI (DVN)

TAKEOFF MINIMUMS AND (OBSTACLE)
DEPARTURE PROCEDURES

AMDT 2 11069 (FAA)

DEPARTURE PROCEDURE: **Rwy 15**, climb heading 149° to 2400 before turning left. **Rwy 21**, climb heading 209° to 1400 before turning left.

TAKEOFF OBSTACLE NOTES: **Rwy 3**, vehicles on roadway, rising terrain and trees beginning 19' from DER, 58' left of centerline, up to 65' AGL/810' MSL.

Vehicles on roadway, rising terrain and trees beginning 536' from DER, 32' right of centerline, up to

36' AGL/777' MSL. **Rwy 15**, rising terrain and trees beginning 54' from DER, 49' left of centerline, up to

100' AGL/849' MSL. Rising terrain and trees beginning

85' from DER, 62' right of centerline, up to 79'

AGL/810' MSL. **Rwy 21**, rising terrain and trees

beginning 53' from DER, left and right of centerline, up

to 43' AGL/784' MSL. **Rwy 33**, rising terrain beginning

at DER, left and right of centerline, up to 784' MSL.

DECORAH, IA

DECORAH MUNI (DEH)

TAKEOFF MINIMUMS AND (OBSTACLE)
DEPARTURE PROCEDURES

AMDT 2 11125 (FAA)

DEPARTURE PROCEDURE: **Rwy 29**, Climb heading 294° to 1600 before turning left.

TAKEOFF OBSTACLE NOTES: **Rwy 11**, terrain beginning 50' from DER, 216' left of centerline, up to

1166' MSL. Terrain beginning 23' from DER, 218' right

of centerline, up to 1170' MSL. Vehicle on road 406'

left of centerline, crossing left to right, up to 15'

AGL/1189' MSL. Poles beginning 378' from DER, 28'

left of centerline, up to 63' AGL/1223' MSL. Tree 89'

from DER, 337' left of centerline, 10' AGL/1170' MSL.

Trees 770' from DER, 201' left of centerline, 37'

AGL/1197' MSL. Buildings and signs 1475' from DER,

198' left of centerline, up to 49' AGL/1229' MSL. Trees

beginning 2890' from DER, 397' left of centerline, up to

100' AGL/1250' MSL. Trees 1292' from DER, 418' right

of centerline, 66' AGL/1206' MSL. Poles and signs

beginning 2058' from DER, 28' right of centerline, up to

57' AGL/1227' MSL. **Rwy 29**, trees beginning 443' from

DER, 485' left of centerline, up to 95' AGL/1205' MSL.

DENISON, IA

DENISON MUNI (DNS)

TAKEOFF MINIMUMS AND (OBSTACLE)
DEPARTURE PROCEDURES

ORIG 08269 (FAA)

TAKEOFF MINIMUMS: **Rwys 6, 18, 24, 36**, NA-
Environmental.

TAKEOFF OBSTACLE NOTES: **Rwy 12**, trees beginning 10' from DER, 202' left of centerline, up to 100' AGL/1352' MSL, trees beginning 293' from DER, 190' right of centerline, up to 100' AGL/1352' MSL.

DES MOINES, IA

DES MOINES INTL (DSM)

TAKEOFF MINIMUMS AND (OBSTACLE)
DEPARTURE PROCEDURES

AMDT 11 13094 (FAA)

DEPARTURE PROCEDURE: **Rwy 5**, Climb heading 051° to 1500 before turning left.

Rwy 5, navaid 39' from DER, 115' left of centerline, 16' AGL/936' MSL. Rising terrain 233' from DER, 503' left of

centerline, up to 941' MSL. Vehicles on roads beginning

540' from DER, 605' left of centerline, up to 15' AGL/964'

MSL. Structure 622' from DER, 588' left of centerline, 11'

AGL/951' MSL. Trees and pole beginning 985' from DER,

399' left of centerline, up to 100' AGL/1024' MSL. Trees

and poles beginning 2280' from DER, 219' right of

centerline, up to 100' AGL/1048' MSL. Trees beginning

3567' from DER, 36' left of centerline, up to 100'

AGL/1038' MSL. **Rwy 13**, vehicles on roads beginning

352' from DER, 539' right of centerline, 15' AGL/974'

MSL. Tree 1427' from DER, 829' left of centerline, 100'

AGL/1002' MSL. Tree 1830' from DER, 918' right of

centerline, 100' AGL/1017' MSL. **Rwy 23**, Vehicles on

roads, beginning 173' from DER, left and right of

centerline, up to 15' AGL/930' MSL. **Rwy 31**, tree 2509'

from DER, 906' right of centerline, 100' AGL/977' MSL.

DEXTER, MO

DEXTER MUNI (DXE)

TAKEOFF MINIMUMS AND (OBSTACLE)
DEPARTURE PROCEDURES

AMDT 3 08213 (FAA)

TAKEOFF MINIMUMS: **Rwy 36**, std. w/ min. climb of 251' per NM to 1100 or 900-2½ for climb in visual conditions.

DEPARTURE PROCEDURE: **Rwy 36**, for climb in visual conditions: Cross Dexter Muni airport at or above 1100 MSL before proceeding on course.

TAKEOFF OBSTACLE NOTES: **Rwy 36**, trees and wind sock beginning 144' from DER, 128' right of centerline,

up to 87' AGL/399' MSL. Trees beginning 2295' from

DER, 169' right of centerline, up to 78' AGL/388' MSL.

Trees beginning 2342' from DER, 164' left of centerline,

up to 74' AGL/387' MSL.

TAKEOFF MINIMUMS, (OBSTACLE) DEPARTURE PROCEDURES, AND DIVERSE VECTOR AREA (RADAR VECTORS)

17341

TAKEOFF MINIMUMS, (OBSTACLE) DEPARTURE PROCEDURES, AND DIVERSE VECTOR AREA (RADAR VECTORS)

17341

DUBUQUE, IA

DUBUQUE RGNL (DBQ)

TAKEOFF MINIMUMS AND (OBSTACLE)

DEPARTURE PROCEDURES

ORIG 06271 (FAA)

TAKEOFF MINIMUMS: **Rwy 13**, 200-1¼ or std. w/ min. climb of 226' per NM to 1300, or alternatively, w/ standard takeoff minimums and a normal 200'/NM climb gradient, takeoff must occur no later than 1700' prior to DER.

TAKEOFF OBSTACLE NOTES: **Rwy 13**, multiple trees and poles beginning 2916' from DER, 20' left of centerline, up to 74' AGL/1185' MSL. Multiple trees and poles beginning 4857' from DER, 559' right of centerline, up to 68' AGL/1227' MSL. **Rwy 18**, elevator 3457' from departure end of runway, 242' left of centerline, 80' AGL/1150' MSL. Tree 1987' from DER, 938' right of centerline, 77' AGL/1088' MSL. **Rwy 31**, tower and multiple trees beginning 2427' from DER, 490' left of centerline, up to 85' AGL/1168' MSL.

EAGLE GROVE, IA

EAGLE GROVE MUNI (EAG)

TAKEOFF MINIMUMS AND (OBSTACLE)

DEPARTURE PROCEDURES

AMDT 3 10042 (FAA)

TAKEOFF MINIMUMS: **Rwys 1, 19**, NA-Environmental. TAKEOFF OBSTACLE NOTES: **Rwy 13**, vehicle on road 520' from DER, 495' left of centerline, 15' AGL/1154' MSL. Train on tracks, 493' from DER, 626' left of centerline, 23' AGL/1152' MSL. Trees beginning 4352' from DER, 1120' left of centerline, up to 100' AGL/1239' MSL. **Rwy 31**, vehicle on road abeam DER, 281' left of centerline, 15' AGL/1154' MSL.

ELDON, MO

ELDON MODEL AIRPARK (H79)

TAKEOFF MINIMUMS AND (OBSTACLE)

DEPARTURE PROCEDURES

ORIG 12208 (FAA)

DEPARTURE PROCEDURE: **Rwy 18**, Climb heading 178° to 1600 before turning right.

TAKEOFF OBSTACLE NOTES: **Rwy 18**, trees beginning 364' from DER, 592' right of centerline, up to 100' AGL/999' MSL. Trees beginning 428' from DER, 474' left of centerline, up to 100' AGL/1001' MSL. Vertical structures beginning 59' from DER, 312' right of centerline, up to 20' AGL/923' MSL. Signs beginning 1474' from DER, 238' left of centerline, up to 48' AGL/951' MSL. REILs beginning 10' from DER, left and right of centerline, up to 3' AGL/907' MSL. Vehicles on roadway, 180' from DER, left and right of centerline, up to 15' AGL/943' MSL. Poles beginning 778' from DER, left and right of centerline, up to 75' AGL/979' MSL. Buildings beginning 750' from DER, 445' right of centerline, up to 50' AGL/954' MSL. Building beginning 1618' from DER, 193' left of centerline, up to 40' AGL/944' MSL. **Rwy 36**, trees beginning 239' from DER, 548' left of centerline, up to 100' AGL/1007' MSL. Trees beginning 544' from DER, 325' right of centerline, up to 100' AGL/ 985' MSL. Vehicles on roadway, 51' from DER, left and right of centerline, up to 15' AGL/952' MSL.

EMMETSBURG, IA

EMMETSBURG MUNI (EGQ)

TAKEOFF MINIMUMS AND (OBSTACLE)

DEPARTURE PROCEDURES

AMDT 1 10042 (FAA)

TAKEOFF MINIMUMS: **Rwys 4, 22, 17, 35**, NA-Environmental.

TAKEOFF OBSTACLE NOTES: **Rwy 13**, trees beginning 754' from DER, 663' right of centerline, up to 45' AGL/1254' MSL. **Rwy 31**, trees beginning 392' from DER, 280' left of centerline, up to 45' AGL/1254' MSL. Trees beginning 1001' from DER, 393' right of centerline, up to 45' AGL/1254' MSL.

EXCELSIOR SPRINGS, MO

EXCELSIOR SPRINGS MEMORIAL (3EX)

TAKEOFF MINIMUMS AND (OBSTACLE)

DEPARTURE PROCEDURES

AMDT 2 15232 (FAA)

TAKEOFF MINIMUMS: **Rwy 3, 21**, 300-1.

TAKEOFF OBSTACLE NOTES: **Rwy 3**, trees beginning 678' from DER, 22' left of centerline, up to 150' AGL/1159' MSL. Trees beginning 1897' from DER, 932' right of centerline, up to 150' AGL/1199' MSL. Vehicles on roads beginning 54' from DER, left and right of centerline, up to 15' AGL/1003' MSL. **Rwy 21**, trees beginning 384' from DER, 176' left of centerline, up to 150' AGL/1159' MSL. Trees beginning 565' from DER, 127' right of centerline, up to 150' AGL/1149' MSL.

FAIRFIELD, IA

FAIRFIELD MUNI (FFL)

TAKEOFF MINIMUMS AND (OBSTACLE)

DEPARTURE PROCEDURES

ORIG 07074 (FAA)

TAKEOFF MINIMUMS: **Rwys 8, 26**, NA-environmental.

FARMINGTON, MO

FARMINGTON RGNL (FAM)

TAKEOFF MINIMUMS AND (OBSTACLE)

DEPARTURE PROCEDURES

AMDT 5 10266 (FAA)

DEPARTURE PROCEDURE: **Rwy 20**, climb heading 202° to 2100 before turning right.

TAKEOFF OBSTACLE NOTES: **Rwy 2**, trees, poles, fence, road, vehicle on road, and buildings beginning 77' from DER, 21' left of centerline, up to 83' AGL/1049' MSL. Trees, poles, antenna, road, and terrain beginning 41' from DER, 3' right of centerline, up to 85' AGL/1045' MSL. **Rwy 20**, trees beginning 50' from DER, 386' left of centerline, up to 76' AGL/956' MSL. Trees, poles, vehicle on road, and terrain beginning 92' from DER, 175' right of centerline, up to 90' AGL/950' MSL.

07 DEC 2017 to 04 JAN 2018

07 DEC 2017 to 04 JAN 2018

TAKEOFF MINIMUMS, (OBSTACLE) DEPARTURE PROCEDURES, AND DIVERSE VECTOR AREA (RADAR VECTORS)

17341

TAKEOFF MINIMUMS, (OBSTACLE) DEPARTURE PROCEDURES, AND DIVERSE VECTOR AREA (RADAR VECTORS)

17341

FESTUS, MO

FESTUS MEMORIAL (FES)

TAKEOFF MINIMUMS AND (OBSTACLE)

DEPARTURE PROCEDURES

AMDT 4 15288 (FAA)

TAKEOFF MINIMUMS: **Rwy 1**, 400-2¾ or std. w/min. climb of 479' per NM to 1000. **Rwy 19**, 400-2¾ or std. w/min. climb of 321' per NM to 1000.

DEPARTURE PROCEDURE: **Rwy 1**, climb heading 010° to 1100 before proceeding on course. **Rwy 19**, climb heading 190° to 1100 before proceeding on course.

TAKEOFF OBSTACLE NOTES: **Rwy 1**, trees beginning 34' from DER, 231' left of centerline, up to 125' AGL/565' MSL. Trees beginning 617' from DER, 568' right of centerline, up to 125' AGL/565' MSL. Trees beginning 3121' from DER, 1314' right of centerline, up to 125' AGL/625' MSL. Tank 1.36 NM from DER, 1357' right of centerline, 209' AGL/641' MSL. **Rwy 19**, railroad 84' from DER, 450' right of centerline, 23' AGL/442' MSL. Trees beginning 1125' from DER, 619' left of centerline, up to 125' AGL/525' MSL. Trees beginning 2844' from DER, 1085' right of centerline, up to 125' AGL/564' MSL. Trees beginning 4690' from DER, 1715' right of centerline, up to 125' AGL/624' MSL.

FOREST CITY, IA

FOREST CITY MUNI (FXY)

TAKEOFF MINIMUMS AND (OBSTACLE)

DEPARTURE PROCEDURES

AMDT 2 10042 (FAA)

TAKEOFF MINIMUMS: **Rwy 33**, 300-2¼ or std. w/ a min. climb of 242' per NM to 1700.

DEPARTURE PROCEDURE: **Rwy 33**, climb heading 332° to 1800 before turning right.

TAKEOFF OBSTACLE NOTES: **Rwy 9**, trees beginning 4' from DER, 106' right of centerline, up to 70' AGL/1289' MSL. Trees beginning 551' from DER, 382' left of centerline, up to 70' AGL/1269' MSL. **Rwy 15**, trees beginning 27' from DER, 345' left of centerline, up to 70' AGL/1256' MSL. Posts beginning 7' from DER, 142' right of centerline, up to 10' AGL/1209' MSL. **Rwy 27**, train 266' from DER, left and right of centerline, up to 23' AGL/1252' MSL. **Rwy 33**, vehicles on road beginning 344' from DER, left and right of centerline, up to 1223' MSL. Building 182' from DER, 483' left of centerline, 24' AGL/1224' MSL. Electrical systems beginning 250' from DER, 441' left of centerline, up to 47' AGL/1247' MSL. Trees beginning 429' from DER, 26' left of centerline, up to 70' AGL/1235' MSL.

FORT DODGE, IA

FORT DODGE RGNL (FOD)

TAKEOFF MINIMUMS AND (OBSTACLE)

DEPARTURE PROCEDURES

AMDT 1 09351 (FAA)

DEPARTURE PROCEDURE: **Rwy 24**, Climb heading 243° to 1700 before turning south.

TAKEOFF OBSTACLE NOTES: **Rwy 6**, trees beginning 106' from DER, 284' left of centerline, up to 16' AGL/1166' MSL. Trees beginning 1138' from DER, 665' left of centerline, up to 76' AGL/1226' MSL. **Rwy 12**, pole beginning 431' from DER, 504' left of centerline, 31' AGL/1171' MSL. Trees beginning 456' from DER, 481' left of centerline, up to 39' AGL/1179' MSL. Building 592' from DER, 484' left of centerline, 24' AGL/1164' MSL. Poles beginning 1037' from DER, 306' right of centerline, up to 41' AGL/1171' MSL. Trees beginning 1227' from DER, 540' right of centerline, up to 68' AGL/1190' MSL. Feed drop 1901' from DER, 774' right of centerline, 84' AGL/1204' MSL. **Rwy 24**, sign 54' from DER, 253' left of centerline, 13' AGL/1083' MSL. Sign 57' from DER, 245' right of centerline, up to 15' AGL/1085' MSL. Trees beginning 177' from DER, 495' right of centerline, up to 44' AGL/1114' MSL. **Rwy 30**, trees beginning 71' from DER, left and right of centerline, up to 67' AGL/1167' MSL. Poles beginning 211' from DER, 421' left of centerline, up to 45' AGL/1135' MSL. Poles beginning 878' from DER, 54' right of centerline, up to 39' AGL/1139' MSL.

FORT LEONARD WOOD, MO

WAYNESVILLE-ST ROBERT RGNL

FORNEY FIELD (TBN)

TAKEOFF MINIMUMS AND (OBSTACLE)

DEPARTURE PROCEDURES

ORIG 11349 (FAA)

TAKEOFF OBSTACLE NOTES: **Rwy 14**, obstruction lights beginning 206' from DER, 261' right of centerline, up to 21' AGL/1172' MSL. Rising terrain beginning 217' from DER, 490' left of centerline, up to 1169' MSL. Obstruction light on localizer antenna 273' from DER, on centerline, 9' AGL/1164' MSL. Obstruction light on fence, 383' from DER, 239' left of centerline, 11' AGL/1170' MSL. Vehicles on roadway beginning 439' from DER, left and right of centerline, up to 17' AGL/1171' MSL.

Rwy 32, fence 26' from DER, 483' right of centerline, up to 9' AGL/1170' MSL. Pole 227' from DER, 451' right of centerline, 26' AGL/1167' MSL. Trees beginning 379' from DER, 425' right of centerline, up to 20' AGL/1179' MSL.

FORT MADISON, IA

FORT MADISON MUNI (FSW)

TAKEOFF MINIMUMS AND (OBSTACLE)

DEPARTURE PROCEDURES

ORIG 10266 (FAA)

TAKEOFF OBSTACLE NOTES: **Rwy 17**, trees beginning at DER, 349' right of centerline, up to 125' AGL/844' MSL. Trees beginning at DER, 164' left of centerline, up to 125' AGL/844' MSL. **Rwy 35**, trees beginning 659' from DER, 304' left of centerline, up to 125' AGL/824' MSL. Trees beginning 3107' from DER, 1184' right of centerline, up to 125' AGL/814' MSL.

TAKEOFF MINIMUMS, (OBSTACLE) DEPARTURE PROCEDURES, AND DIVERSE VECTOR AREA (RADAR VECTORS)

17341

**TAKEOFF MINIMUMS, (OBSTACLE) DEPARTURE PROCEDURES, AND
DIVERSE VECTOR AREA (RADAR VECTORS)**

17341

FREDERICKTOWN, MO

A PAUL VANCE FREDERICK TOWN
RGNL (H88)

TAKEOFF MINIMUMS AND (OBSTACLE)
DEPARTURE PROCEDURES

AMDT 1 13234 (FAA)

TAKEOFF MINIMUMS: **Rwy 1**, 300-2¼ or std. w/min.
climb of 237' per NM to 1300.

TAKEOFF OBSTACLE NOTES: **Rwy 1**, trees beginning
9' from DER, 120' right of centerline, up to 74'
AGL/973' MSL. Trees beginning 28' from DER 121' left
of centerline, up to 59' AGL/938' MSL. Trees beginning
1.45 NM from DER, 1593' right of centerline, up to 68'
AGL/1177' MSL. Tree 1.63 NM from DER, 2232' right
of centerline, up to 65' AGL/1174' MSL. Tree 1.68 NM
from DER, 1842' right of centerline, up to 68'
AGL/1177' MSL. Tree 1.77 NM from DER, 2719' right
of centerline, up to 52' AGL/1151' MSL. **Rwy 19**, light
support structure beginning 10' from DER, 51' right of
centerline, up to 17' AGL/876' MSL.

FULTON, MO

ELTON HENSLEY MEMORIAL (FTT)

TAKEOFF MINIMUMS AND (OBSTACLE)
DEPARTURE PROCEDURES

AMDT 1 09071 (FAA)

DEPARTURE PROCEDURE: **Rwy 36**, Climb heading
001° to 1400 before turning right.

TAKEOFF OBSTACLE NOTES: **Rwy 18**, tree 1506'
from DER, 809' right of centerline, 100' AGL/989' MSL.

Rwy 36, tree 1809' from DER, 272' right of
centerline, 46' AGL/923' MSL.

GRAIN VALLEY, MO

EAST KANSAS CITY (3GV)

TAKEOFF MINIMUMS AND (OBSTACLE)
DEPARTURE PROCEDURES

ORIG 14317 (FAA)

TAKEOFF MINIMUMS: **Rwy 9**, 300- 1½ or std. w/min.
climb of 225' per NM to 1200 or alternatively, with
standard take off minimums and a normal 200' per NM
climb gradient, takeoff must occur no later than 1900'
prior to DER. **Rwy 23**, 300- 1 5/8 or std. w/min. climb of
363' per NM to 1100. **Rwy 27**, 300- 1¾ or std. w/min.
climb of 301' per NM to 1100.

TAKEOFF OBSTACLE NOTES: **Rwy 5**, vehicles
beginning 27' from DER, 208' left of centerline, up to 15'
AGL/854' MSL. Hangars beginning 42' from DER, 261'
right of centerline, up to 24' AGL/873' MSL. Trees
beginning 1' from DER, 208' left of centerline, up to 100'
AGL/939' MSL. Trees beginning 537' from DER, 554'
right of centerline, up to 100' AGL/939' MSL. **Rwy 9**,
vehicles beginning 2' from DER, 175' right of centerline,
up to 15' AGL/825' MSL. Train beginning 6' from DER,
203' right of centerline, up to 23' AGL/833' MSL. Trees
beginning 7' from DER, 320' left of centerline, up to 100'
AGL/920' MSL. Trees beginning 12' from DER, 354' right
of centerline, up to 100' AGL/1040' MSL. **Rwy 23**,
hangars beginning 16' from DER, 432' right of centerline,
up to 24' AGL/863' MSL. Trees beginning 35' from DER,
271' left side of centerline, up to 100' AGL/919' MSL.
Trees beginning 1931' from DER, 796' right of centerline,
up to 100' AGL/919' MSL. Trees beginning 3501' from
DER, 1335' left of centerline, up to 100' AGL/1020' MSL.
Trees beginning 1.1 NM from DER, 150' right of
centerline, up to 100' AGL/1000' MSL. Trees beginning
1.12 NM from DER, 351' left of centerline, up to 100'
AGL/1050' MSL. **Rwy 27**, trees beginning 34' from DER,
458' left of centerline, up to 100' AGL/919' MSL. Vehicles
beginning 26' from DER, 145' right of centerline, up to 15'
AGL/854' MSL. Trees beginning 2148' from DER, 687'
left of centerline, up to 100' AGL/949' MSL. Trees
beginning 4410' from DER, 357' right of centerline, up to
100' AGL/1050' MSL.

GREENFIELD, IA

GREENFIELD MUNI (GFZ)

TAKEOFF MINIMUMS AND (OBSTACLE)
DEPARTURE PROCEDURES

ORIG 11013 (FAA)

TAKEOFF OBSTACLE NOTES: **Rwy 7**, terrain 26' from
DER, 252' left of centerline, up to 1367' MSL. **Rwy 14**,
trees beginning 431' from DER, 327' left of centerline, up
to 100' AGL/1479' MSL. Vehicle on road 297' from DER,
60' right of centerline, 15' AGL/1374' MSL. **Rwy 25**,
terrain, trees and fence beginning 96' from DER, 160' left
of centerline, up to 38' AGL/1397' MSL. **Rwy 32**, tree
906' from DER, 292' left of centerline, 100' AGL/1439'
MSL.

07 DEC 2017 to 04 JAN 2018

07 DEC 2017 to 04 JAN 2018

**TAKEOFF MINIMUMS, (OBSTACLE) DEPARTURE PROCEDURES, AND
DIVERSE VECTOR AREA (RADAR VECTORS)**

17341

TAKEOFF MINIMUMS, (OBSTACLE) DEPARTURE PROCEDURES, AND DIVERSE VECTOR AREA (RADAR VECTORS)

17341

GIDEON, MO

GIDEON MEMORIAL (M85)

TAKEOFF MINIMUMS AND (OBSTACLE)
DEPARTURE PROCEDURES
ORIG 13122 (FAA)

TAKEOFF OBSTACLE NOTES: **Rwy 15**, vehicle on road beginning 171' from DER, left and right of centerline, up to 15' AGL/284' MSL. Power lines beginning 521' from DER, 296' left of centerline, up to 40' AGL/309' MSL. Trees beginning 874' from DER, 577' left of centerline up to 150' AGL/419' MSL. Trees beginning 1809' from DER, 100' right of centerline, up to 150' AGL/419' MSL. **Rwy 33**, vehicle on road beginning 204' from DER, 283' left of centerline, up to 15' AGL/284' MSL. Trees and poles beginning 481' from DER, 224' left of centerline, up to 150' AGL/419' MSL. Building 574' from DER, 374' left of centerline, 20' AGL/289' MSL. Powerlines beginning 891' from DER, left and right of centerline, up to 40' AGL/309' MSL. Mill and water tower beginning 1920' from DER, 813' left of centerline, up to 142' AGL/411' MSL.

GRINNELL, IA

GRINNELL RGNL (GGI)

TAKEOFF MINIMUMS AND (OBSTACLE)
DEPARTURE PROCEDURES
AMDT 1 08157 (FAA)

TAKEOFF OBSTACLE NOTES: **Rwy 13**, road plus vehicles beginning 164' from DER, 497' left of centerline, 15' AGL/1024' MSL. Trees beginning 958' from DER, 324' left of centerline, up to 50' AGL/1059' MSL. **Rwy 31**, tree 681' from DER, 589' right of centerline, up to 75' AGL/1075' MSL. Tree 716' from DER, 610' left of centerline, up to 50' AGL/1009' MSL. Road plus vehicle beginning 22' from DER, 215' right of centerline, 15' AGL/995' MSL. Multiple poles and buildings beginning 492' from DER, 249' right of centerline, up to 23' AGL/1032' MSL.

GUTHRIE CENTER, IA

GUTHRIE COUNTY RGNL (GCT)

TAKEOFF MINIMUMS AND (OBSTACLE)
DEPARTURE PROCEDURES
ORIG 10126 (FAA)

TAKEOFF OBSTACLE NOTES: **Rwy 18**, vehicle on road 599' from DER, 9' left of centerline, 15' AGL/1234' MSL. Tree beginning 1083' from DER, 432' right of centerline, 100' AGL/1319' MSL. Tree beginning 1147' from DER, 141' left of center, 100' AGL/1319' MSL. **Rwy 36**, tree beginning 1609' from DER, 432' right of centerline, 100' AGL/1319' MSL. Tree beginning 604' from DER, 240' left of centerline, 100' AGL/1319' MSL.

HAMPTON, IA

HAMPTON MUNI (HPT)

TAKEOFF MINIMUMS AND (OBSTACLE)
DEPARTURE PROCEDURES
AMDT 3A 11069 (FAA)

TAKEOFF MINIMUMS: **Rwy 17**, 400-1. **Rwy 35**, 300-1 or std. w/min. climb of 471' per NM to 1500.
TAKEOFF OBSTACLE NOTES: **Rwy 17**, tower 238' from DER, 536' left of centerline, 30' AGL/1188' MSL.

HANNIBAL, MO

HANNIBAL RGNL (HAE)

TAKEOFF MINIMUMS AND (OBSTACLE)
DEPARTURE PROCEDURES
ORIG 09127 (FAA)

TAKEOFF OBSTACLE NOTES: **Rwy 17**, trees beginning 15' from DER, 205' right of centerline, up to 80' AGL/819' MSL. **Rwy 35**, trees beginning 377' from DER, 90' left of centerline, up to 60' AGL/809' MSL. Trees beginning 1870' from DER, 103' right of centerline, up to 66' AGL/814' MSL.

HARLAN, IA

HARLAN MUNI (HNR)

TAKEOFF MINIMUMS AND (OBSTACLE)
DEPARTURE PROCEDURES
AMDT 1 10266 (FAA)

TAKEOFF MINIMUMS: **Rwys 3, 21**, NA-Environmental.

Rwy 15, 300-1¼ or std. w/ min. climb of 250' per NM to 1600.

TAKEOFF OBSTACLE NOTES: **Rwy 15**, vehicle on road beginning 207' from DER, left and right of centerline, up to 17' AGL/1216' MSL. Pole and parked plane beginning 151' from DER, 361' left of centerline, 50' AGL/1210' MSL. Power pole 989' from DER, 9' right of centerline, 50' AGL/1249' MSL. Trees beginning 3253' from DER, 624' left of centerline, up to 100' AGL/1439' MSL. **Rwy 33**, antenna 1' from DER, 267' left of centerline, 10' AGL/1250' MSL. Rising terrain, trees, and posts beginning 23' from DER, left and right of centerline, up to 92' AGL/1333' MSL. Fence beginning 88' from DER, 73' right of centerline, up to 26' AGL/1286' MSL. Vehicle on road beginning 84' from DER, left and right of centerline, up to 15' AGL/1379' MSL.

HARRISONVILLE, MO

LAWRENCE SMITH MEMORIAL (LRY)

TAKEOFF MINIMUMS AND (OBSTACLE)
DEPARTURE PROCEDURES
ORIG 08045 (FAA)

TAKEOFF MINIMUMS: **Rwy 35**, 300-1¼ or std. w/ min climb of 346' per NM to 1300.

TAKEOFF OBSTACLE NOTES: **Rwy 17**, vehicle on road 660' from DER, 618' left of centerline, 15' AGL/914' MSL. Tree 26' from DER, 448' left of centerline, 10' AGL/889' MSL. Multiple trees beginning 178' from DER, on centerline, up to 88' AGL/937' MSL. Multiple trees beginning 1271' from DER, 277' left of centerline, up to 53' AGL/932' MSL. Multiple trees beginning 1722' from DER, 500' right of centerline, up to 100' AGL/959' MSL. **Rwy 35**, Multiple trees beginning 69' from DER, 439' left of centerline, up to 57' AGL/984' MSL. Vehicle on road 620' from DER, on centerline, up to 15' AGL/934' MSL. Multiple trees beginning 572' from DER, 130' right of centerline, up to 69' AGL/987' MSL. Multiple trees beginning 2132' from DER, 103' right of centerline, up to 85' AGL/1034' MSL. Multiple trees beginning 3635' from DER, 877' right of centerline up to 100' AGL/1059' MSL. Multiple trees beginning 3819' from DER, 280' left of centerline, up to 100' AGL/1099' MSL. Trees beginning 5443' from DER, 1738' left of centerline, up to 100' AGL/1079' MSL. Tank 1.5 NM from DER, 1141' right of centerline, 203' AGL/1153' MSL.

07 DEC 2017 to 04 JAN 2018

07 DEC 2017 to 04 JAN 2018

TAKEOFF MINIMUMS, (OBSTACLE) DEPARTURE PROCEDURES, AND DIVERSE VECTOR AREA (RADAR VECTORS)

17341

**TAKEOFF MINIMUMS, (OBSTACLE) DEPARTURE PROCEDURES, AND
DIVERSE VECTOR AREA (RADAR VECTORS)**

17341

HIGGINSVILLE, MO

HIGGINSVILLE INDUSTRIAL MUNI (HIG)
TAKEOFF MINIMUMS AND (OBSTACLE)
DEPARTURE PROCEDURES
ORIG 06271 (FAA)

TAKEOFF OBSTACLE NOTES: **Rwy 16**, multiple trees beginning 87' from DER, 389' right of centerline, up to 100' AGL/879' MSL. Multiple trees beginning 472' from DER, 313' left of centerline, up to 100' AGL/889' MSL. Multiple trees beginning 626' from DER, 472' left of centerline, up to 75' AGL/854' MSL. **Rwy 34**, multiple trees beginning 23' from DER, 155' right of centerline, up to 100' AGL/949' MSL. Multiple trees beginning 1860' from DER, 76' right of centerline, up to 100' AGL/919' MSL. Road 644' from DER, on centerline, 15' AGL/864' MSL.

HOUSTON, MO

HOUSTON MEMORIAL (M48)
TAKEOFF MINIMUMS AND (OBSTACLE)
DEPARTURE PROCEDURES
ORIG 12264 (FAA)

TAKEOFF OBSTACLE NOTES: **Rwy 16**, tree 93' from DER, 331' right of centerline, 80' AGL/1225' MSL. Spire, roofs, and trees beginning 184' from DER, 440' left of centerline, up to 76' AGL/1257' MSL. **Rwy 34**, trees beginning 180' from DER, 311' right of centerline, up to 70' AGL/1289' MSL. Trees beginning 34' from DER, 280' left of centerline, up to 80' AGL/1281' MSL.

INDEPENDENCE, IA

INDEPENDENCE MUNI (IIB)
TAKEOFF MINIMUMS AND (OBSTACLE)
DEPARTURE PROCEDURES
AMDT 5 12040 (FAA)

DEPARTURE PROCEDURE: **Rwy 18**, climbing right turn heading 190° and CID R-338 to 3300 before proceeding on course. **Rwy 36**, climb heading 359° to 2200 before proceeding on course.

IOWA CITY, IA

IOWA CITY MUNI (IOW)
TAKEOFF MINIMUMS AND (OBSTACLE)
DEPARTURE PROCEDURES
AMDT 3B 17285 (FAA)

TAKEOFF MINIMUMS: **Rwy 25**, 200-1½ or std w/min. climb of 269' per NM to 900. **Rwy 30**, 300-2 or std. w/min. climb of 374' per NM to 1100.

DEPARTURE PROCEDURE: **Rwy 7**, climbing right turn heading 180° and IOW VOR/DME R-057 to IOW VOR/DME.

TAKEOFF OBSTACLE NOTES: **Rwy 7**, multiple trees beginning 145' from DER, 199' left of centerline up to 38' AGL/802' MSL. Road, multiple trees and poles beginning 155' from DER 4' right of centerline, up to 16' AGL/721' MSL. **Rwy 12**, multiple trees beginning 227' from DER, 270' right of centerline up to 20' AGL/737' MSL. Light pole 850' from DER, 142' right of centerline, 33' AGL/681' MSL. Railroad 1002' from DER, 6' left of centerline, 25' AGL/675' MSL. Road 587' from DER, 303' left of centerline, 15' AGL/666' MSL. Obstruction light on building 861' from DER, 315' left of centerline, 32' AGL/682' MSL. Trees beginning 255' from DER, 464' left of centerline, 50' AGL/699' MSL. **Rwy 25**, tree 1753' from DER, 368' right of centerline, 77' AGL/775' MSL. Sign 2233' from DER, 418' right of centerline, 25' AGL/764' MSL. Obstruction light pole 1723' from DER, 435' right of centerline, 32' AGL/750' MSL. Building 3654' from DER, 1034' right of centerline, 31' AGL/768' MSL. Fence 1897' from DER, 423' left of centerline, 15' AGL/734' MSL. Multiple trees, signs, and obstruction light poles, beginning 2696' from DER, 343' left of centerline, up to 51' AGL/843' MSL. Power pole 2464' from DER, 248' right of centerline, 39' AGL/780' MSL. **Rwy 30**, multiple trees, obstruction light poles, and towers beginning 1115' from DER, 12' right of centerline up to 258' AGL/936' MSL. Multiple trees and antenna beginning 1662' from DER, 195' left of centerline up to 44' AGL/786' MSL.

IOWA FALLS, IA

IOWA FALLS MUNI (IFA)
TAKEOFF MINIMUMS AND (OBSTACLE)
DEPARTURE PROCEDURES
ORIG 09071 (FAA)

TAKEOFF OBSTACLE NOTES: **Rwy 13**, multiple trees and buildings beginning 1092' from DER, 349' left of centerline, up to 100' AGL/1239' MSL. **Rwy 31**, multiple trees and buildings beginning 1023' from DER, 750' left of centerline, up to 100' AGL/1259' MSL.

07 DEC 2017 to 04 JAN 2018

07 DEC 2017 to 04 JAN 2018

**TAKEOFF MINIMUMS, (OBSTACLE) DEPARTURE PROCEDURES, AND
DIVERSE VECTOR AREA (RADAR VECTORS)**

17341

TAKEOFF MINIMUMS, (OBSTACLE) DEPARTURE PROCEDURES, AND DIVERSE VECTOR AREA (RADAR VECTORS)

17341

JEFFERSON, IA

JEFFERSON MUNI (EFW)
TAKEOFF MINIMUMS AND (OBSTACLE)
DEPARTURE PROCEDURES

AMDT 3 10266 (FAA)

TAKEOFF MINIMUMS: **Rwys 18, 36**, NA-
Environmental. **Rwy 32**, 500-2 or std. w/ min. climb of
430' per NM to 1700.

TAKEOFF OBSTACLE NOTES: **Rwy 14**, fence 167'
from DER, 253' left of centerline, 8' AGL/1048' MSL.
Vehicle on road 755' from DER, 461' right of centerline,
up to 15' AGL/1074' MSL. **Rwy 32**, rising terrain
beginning 16' from DER, 326' left of centerline, up to
1049' MSL. Trees beginning 95' from DER, left and
right of centerline, up to 77' AGL/1127' MSL. Vehicle
on road beginning 294' from DER, 59' right of
centerline, up to 15' AGL/1059' MSL. Antenna 968'
from DER, 706' left of centerline, 58' AGL/1108' MSL.
Grain elevator 8342' from DER, 1729' left of centerline,
280' AGL/1429' MSL.

JEFFERSON CITY, MO

JEFFERSON CITY MEMORIAL (JEF)
TAKEOFF MINIMUMS AND (OBSTACLE)
DEPARTURE PROCEDURES

AMDT 7 07354 (FAA)

TAKEOFF MINIMUMS: **Rwy 9**, 300-1 $\frac{3}{4}$.

Rwy 27, 300-1 $\frac{1}{2}$ or std. w/ min. climb of 337' per NM to
900.

DEPARTURE PROCEDURE: **Rwy 9**, climb heading
088° to 1200 before proceeding on course. **Rwy 12**,
climb heading 120° to 1100 before proceeding on
course. **Rwy 27**, climb heading 268° to 1100 before
proceeding on course. **Rwy 30**, climb heading 300° to
1000 before proceeding on course.

TAKEOFF OBSTACLE NOTES: **Rwy 9**, glideslope
antenna 1101' from DER, 598' right of centerline, 31'
AGL/577' MSL. Trees beginning 4022' from DER,
1487' left to 1110' right of centerline, up to 100'
AGL/839' MSL. **Rwy 12**, trees beginning 2134' from
DER, 980' left of centerline, up to 56' AGL/603' MSL.
Rwy 27, hangar and trees beginning 600' from DER,
199' right of centerline, up to 100' AGL/739' MSL.
Antenna on bridge, tower, water treatment plant, and
trees beginning 94' from DER, 113' left of centerline,
up to 100' AGL/759' MSL. **Rwy 30**, light on DME, sign,
tower, poles, and trees beginning 617' from DER, 216'
left of centerline, up to 109' AGL/649' MSL. Vehicles
on road, pole and trees beginning 397' from DER, 265'
right of centerline, up to 133' AGL/681' MSL.

JOPLIN, MO

JOPLIN RGNL (JLN)
TAKEOFF MINIMUMS AND (OBSTACLE)
DEPARTURE PROCEDURES

AMDT 5 17341 (FAA)

DEPARTURE PROCEDURE: **Rwy 13**, climb heading
134° to 1700 before turning right. **Rwy 18**, climb heading
178° to 2300 before turning right.

TAKEOFF OBSTACLE NOTES: **Rwy 13**, terrain 60' from
DER, 496' right of centerline, 979' MSL. Tree 476' from
DER, 501' left of centerline, 989' MSL. Tree 867' from
DER, 484' right of centerline, 1008' MSL. Tree 979' from
DER, 665' right of centerline, 1017' MSL. Tree 1057'
from DER, 448' right of centerline, 1021' MSL. Tree
1097' from DER, 594' right of centerline, 1029' MSL.
Trees beginning 1100' from DER, 614' left of centerline,
up to 1028' MSL. Trees beginning 1145' from DER, 282'
right of centerline, up to 1033' MSL. Trees beginning
1226' from DER, 47' right of centerline, up to 1036' MSL.
Tree 1332' from DER, 598' left of centerline, 1031' MSL.
Trees beginning 1405' from DER, 15' left of centerline,
up to 1039' MSL. Trees beginning 1868' from DER, 37'
left of centerline, up to 1040' MSL. Tree 2092' from DER,
249' left of centerline, 1043' MSL. Tree 2792' from DER,
1210' right of centerline, 1048' MSL. **Rwy 18**, NAVAID
515' from DER, 630' right of centerline, 12' AGL/987'
MSL. NAVAID 1160' from DER, 264' right of centerline,
23' AGL/1007' MSL. Pole 1578' from DER, 621' left of
centerline, 24' AGL/1012' MSL. **Rwy 31**, transmission
line, pole beginning 617' from DER, 644' left of
centerline, up to 39' AGL/969' MSL. Trees beginning 839'
from DER, 416' left of centerline, up to 987' MSL. Trees
beginning 1142' from DER, 567' left of centerline, up to
995' MSL. Trees beginning 1198' from DER, 168' left of
centerline, up to 996' MSL. Trees beginning 1271' from
DER, 570' right of centerline, up to 985' MSL. Trees
beginning 1378' from DER, 797' right of centerline, up to
996' MSL. Trees beginning 1523' from DER, 47' left of
centerline, up to 999' MSL. Tree 2090' from DER, 870'
left of centerline, 1004' MSL. Tree 2213' from DER, 1045'
left of centerline, 1005' MSL. Trees beginning 2330' from
DER, 1019' left of centerline, up to 84' AGL/1019' MSL.
Rwy 36, NAVAID 4' from DER, 0' right of centerline, 1'
AGL/950' MSL. Terrain 685' from DER, 656' right of
centerline, 969' MSL.

KAISER LAKE OZARK, MO

LEE C. FINE MEMORIAL (AIZ)
TAKEOFF MINIMUMS AND (OBSTACLE)
DEPARTURE PROCEDURES

AMDT 2 13150 (FAA)

TAKEOFF OBSTACLE NOTES: **Rwy 4**, pole 366' from
DER, 446' right of centerline, 17' AGL/887' MSL. Trees
beginning 333' from DER, 480' right of centerline, up to
80' AGL/913' MSL. Trees beginning 584' from DER, 456'
left of centerline, up to 80' AGL, 914' MSL. **Rwy 22**,
trees beginning 233' from DER, 133' right of centerline,
up to 80' AGL/949' MSL. Trees beginning 26' from DER,
350' left of centerline, up to 80' AGL/937' MSL.

TAKEOFF MINIMUMS, (OBSTACLE) DEPARTURE PROCEDURES, AND DIVERSE VECTOR AREA (RADAR VECTORS)

17341

TAKEOFF MINIMUMS, (OBSTACLE) DEPARTURE PROCEDURES, AND DIVERSE VECTOR AREA (RADAR VECTORS)

17341

KANSAS CITY, MO

CHARLES B WHEELER DOWNTOWN (MKC)
TAKEOFF MINIMUMS AND (OBSTACLE)
DEPARTURE PROCEDURES
AMDT 4 17229 (FAA)

TAKEOFF MINIMUMS: **Rwy 1**, 300-1% or std. w/ min. climb of 312' per NM to 1000. **Rwy 19**, std. w/ min. climb of 465' per NM to 2500. **Rwy 21**, 200-1% or std. w/ min. climb of 260' per NM to 1000.

DEPARTURE PROCEDURE: **Rwy 1**, climb heading 012° to 2000 before proceeding on course. **Rwy 3**, climb heading 037° to 1900 before proceeding on course. **Rwy 19**, climbing right turn heading 215° to 2500 before proceeding on course. **Rwy 21**, climb heading 217° to 2300 before proceeding on course.

TAKEOFF OBSTACLE NOTES: **Rwy 1**, vehicle on roadway 275' from DER, 134' left of centerline, 767' MSL. Pole 3076' from DER, 1066' right of centerline, 842' MSL. OL pipe on building, OL on elevator, building beginning 3990' from DER, 995' right of centerline, up to 912' MSL. Tree 1.5 NM from DER, 1169' right of centerline, 997' MSL. **Rwy 3**, NAVAID light 10' from DER, 41' left of centerline, up to 744' MSL. Pole, train on tracks, vehicle on roadway, tree beginning 50' from DER, 46' right of centerline, up to 39' AGL/788' MSL. Tower, building, ant on building beginning 145' from DER, 259' left of centerline, up to 12' AGL/755' MSL. Vehicle on roadway, tree beginning 173' from DER, 16' left of centerline, up to 761' MSL. Poles, train on tracks beginning 285' from DER, on centerline and right, up to 49' AGL/794' MSL. Vehicle on roadway 361' from DER, 164' left of centerline, 762' MSL. Trains on tracks, vehicle on roadway beginning 370' from DER, 27' left of centerline, up to 780' MSL. Pole, OL on pole, OL on hangar, OL buildings, trains on tracks beginning 596' from DER, 73' left of centerline, up to 42' AGL/785' MSL. Tree, trains on tracks, building, poles beginning 742' from DER, 29' left of centerline, up to 797' MSL. Tank, train on tracks, building beginning 780' from DER, 285' right of centerline, up to 66' AGL/810' MSL. Elevator, poles, train on tracks, trees, building, OL on building beginning 827' from DER, 45' right of centerline, up to 125' AGL/865' MSL. OL tower 1846' from DER, 476' left of centerline, 107' AGL/848' MSL. Towers, tank beginning 1852' from DER, 98' left of centerline, up to 108' AGL/850' MSL. Towers beginning 3825' from DER, 131' left of centerline, up to 115' AGL/859' MSL. **Rwy 19**, rod on OL building, building, vehicle on roadway beginning 182' from DER, 279' right of centerline, up to 760' MSL. Vehicle on roadway 199' from DER, 506' left of centerline, 760' MSL. Vehicle on roadway 355' from DER, 297' right of centerline, 761' MSL. Vehicle on roadway 380' from DER, 177' right of centerline, 762' MSL. Building, dam, OL on levee, driveways beginning 383' from DER, 55' right of centerline, up to 29' AGL/769' MSL. Tree 610' from DER, 485' left of centerline, 808' MSL. Trees beginning 1000' from DER, 132' right of centerline, up to 817' MSL. Pole 2867' from DER, 161' left of centerline, 833' MSL. Pole 2996' from DER, 540' right of centerline, 82' AGL/830' MSL. Stack 3220' from DER, 420' left of centerline, 168' AGL/908' MSL. Building, OL on building beginning 3412' from DER, 74' right of centerline, up to 141' AGL/889' MSL. Flagpole on building, buildings, chimney beginning 4382' from DER, 178' right of centerline, up to 912' MSL. Buildings, monument beginning 4488' from DER, 1447' left of centerline, up to 51' AGL/993' MSL. Building 5596' from DER, 470' right of centerline, 189' AGL/937' MSL. Building -tower 1 NM from DER, 1702' left of centerline, 100' AGL/1016' MSL. Light pole 1.5 NM from DER, 1294' left of centerline, 1017' MSL. Tree 1.5 NM from DER, 1054' left of centerline, 1023' MSL.

KANSAS CITY, MO (CON'T)

CHARLES B WHEELER DOWNTOWN
(MKC) (CON'T)

Rwy 21, tree 52' from DER, 12' right of centerline, 745' MSL. Vehicles on roadways, fence beginning 196' from DER, 378' right of centerline, up to 761' MSL. Dam, driveways, vehicles on roadways, levee beginning 297' from DER, 2' right of centerline, up to 1' AGL/762' MSL. Vehicles on roadways beginning 398' from DER, 28' left of centerline, up to 761' MSL. Dam beginning 432' from DER, 57' right of centerline, up to 8' AGL/763' MSL. Dam, driveways beginning 526' from DER, 53' left of centerline, up to 1' AGL/762' MSL. Tree 964' from DER, 538' left of centerline, 781' MSL. Trees beginning 1066' from DER, 591' left of centerline, up to 792' MSL. Trees beginning 1486' from DER, 571' right of centerline, up to 831' MSL. Tree 1508' from DER, 622' left of centerline, 798' MSL. Trees beginning 1510' from DER, 20' left of centerline, up to 809' MSL. Tree 1619' from DER, 713' right of centerline, 93' AGL/836' MSL. Trees beginning 1642' from DER, 264' right of centerline, up to 98' AGL/841' MSL. Cranes, OL on dome beginning 2729' from DER, 348' right of centerline, up to 98' AGL/849' MSL. Pole 3686' from DER, 632' right of centerline, 118' AGL/858' MSL. Chimney 4690' from DER, 1700' left of centerline, 866' MSL. Building 4796' from DER, 1715' left of centerline, 869' MSL. Building 4796' from DER, 1715' left of centerline, 152' AGL/898' MSL. Elevator 5177' from DER, 810' left of centerline, 901' MSL. Elevator 1 NM from DER, 1047' left of centerline, 164' AGL/911' MSL. Stack 1.3 NM from DER, 588' left of centerline, 198' AGL/948' MSL.

KANSAS CITY INTL (MCI)

TAKEOFF MINIMUMS AND (OBSTACLE)
DEPARTURE PROCEDURES
ORIG 05300 (FAA)

TAKEOFF OBSTACLE NOTES: **Rwy 1R**, tree 1653' from DER, 661' left of centerline, 60' AGL/1019' MSL. **Rwy 9**, tree 4544' from DER, 638' right of centerline, 100' AGL/1159' MSL. **Rwy 27**, trees beginning 1066' from DER, across centerline, up to 86' AGL/1095' MSL.

KENNETT, MO

KENNETT MEMORIAL (TKX)
TAKEOFF MINIMUMS AND (OBSTACLE)
DEPARTURE PROCEDURES
AMDT 2 14065 (FAA)

TAKEOFF OBSTACLE NOTES: **Rwy 2**, trees beginning 1163' from DER, 502' left of centerline, up to 51' AGL/309' MSL. Pole 1062' from DER, 417' left of centerline, 28' AGL/286' MSL. Multiple trees beginning 1221' from DER, 324' right of centerline, up to 96' AGL/354' MSL. **Rwy 20**, trees beginning 2018' from DER, 75' left of centerline, up to 62' AGL/321' MSL. Vehicles on road 49' from DER, 405' right of centerline, 15' AGL/269' MSL. Dead tree 1056' from DER, 324' right of centerline, 42' AGL/300' MSL. Trees beginning 1027' from DER, 94' right of centerline, up to 53' AGL/312' MSL. Tree line beginning 1085' from DER, 420' right of centerline, up to 40' AGL/299' MSL. **Rwy 36**, hangar 64' from DER, 299' left of centerline, 21' AGL/281' MSL. Trees beginning 98' from DER, 352' left of centerline, up to 49' AGL/309' MSL. Sign 1050' left of DER, 448' right of centerline, 45' AGL/305' MSL.

TAKEOFF MINIMUMS, (OBSTACLE) DEPARTURE PROCEDURES, AND DIVERSE VECTOR AREA (RADAR VECTORS)

17341

**TAKEOFF MINIMUMS, (OBSTACLE) DEPARTURE PROCEDURES, AND
DIVERSE VECTOR AREA (RADAR VECTORS)**

17341

KEOKUK, IA**KEOKUK MUNI (EOK)**

TAKEOFF MINIMUMS AND (OBSTACLE)

DEPARTURE PROCEDURES

ORIG 06271 (FAA)

TAKEOFF OBSTACLE NOTES: **Rwy 8**, tree 79' from DER, 513' right of centerline, 26' AGL/695' MSL. Fence and trees 102' from DER, 298' left of centerline, 37' AGL/706' MSL. **Rwy 14**, multiple trees 200' from DER, 156' left of centerline, 65' AGL/704' MSL. Multiple trees 172' from DER, 92' right of centerline, 70' AGL/739' MSL. **Rwy 26**, tree 298' from DER, 496' left of centerline, 56' AGL/695' MSL. Tank and trees 351' from DER, 508' right of centerline, 111' AGL/790' MSL. **Rwy 32**, multiple trees 303' from DER, 243' left of centerline 56' AGL/725' MSL. Hanger and tree 281' from DER, 442' right of centerline, 61' AGL/730' MSL.

KIRKSVILLE, MO**KIRKSVILLE RGNL (IRK)**

TAKEOFF MINIMUMS AND (OBSTACLE)

DEPARTURE PROCEDURES

ORIG 07186 (FAA)

TAKEOFF MINIMUMS: **Rwys 9, 27**, NA-turf runways.

TAKEOFF OBSTACLE NOTES: **Rwy 18**, multiple trees beginning 986' from DER, 278' left of centerline, up to 44' AGL/1023' MSL. **Rwy 36**, multiple trees and poles beginning 935' from DER, 179' right of centerline, up to 54' AGL/1033' MSL. Obstruction light on DME antenna 649' from DER, 269' right of centerline, 7' AGL/986' MSL. Truck on road beginning 1081' from DER, 785' right of centerline, 17' AGL/996' MSL. Tree 326' from DER, 473' left of centerline, 17' AGL/976' MSL.

KNOXVILLE, IA**KNOXVILLE (OXV)**

TAKEOFF MINIMUMS AND (OBSTACLE)

DEPARTURE PROCEDURES

ORIG 10098 (FAA)

TAKEOFF OBSTACLE NOTES: **Rwy 15**, vehicle and road beginning 49' from DER, 295' left of centerline, up to 15' AGL/937' MSL. Trees beginning 387' from DER, 389' right of centerline, up to 100' AGL/1029' MSL. Poles beginning 407' from DER, 224' left of centerline, up to 61' AGL/962' MSL. Buildings beginning 506' from DER, 406' right of centerline, up to 28' AGL/948' MSL. Trees beginning 685' from DER, 396' left of centerline, up to 100' AGL/1029' MSL. **Rwy 33**, trees beginning 33' from DER, 440' left of centerline, up to 73' AGL/963' MSL. Trees beginning 39' from DER, 465' right of centerline, up to 100' AGL/1029' MSL. Fence beginning 86' from DER, 350' right of centerline, up to 9' AGL/930' MSL. Vehicle and road beginning 158' from DER, 490' right of centerline, up to 15' AGL/931' MSL.

LAMAR, MO**LAMAR MUNI (LLU)**

TAKEOFF MINIMUMS AND (OBSTACLE)

DEPARTURE PROCEDURES

AMDT 1 14149 (FAA)

TAKEOFF OBSTACLE NOTES: **Rwy 3**, sign 9' from DER, 124' left of centerline, 13' AGL/998' MSL. Tank 16' from DER, 502' right of centerline, 13' AGL/998' MSL. Buildings beginning 66' from DER, 333' right of centerline, up to 40' AGL/1021' MSL. Poles beginning 198' from DER, 252' right of centerline, up to 63' AGL/1038' MSL. Pole 752' from DER, 644' left of centerline, 32' AGL/1020' MSL. Vehicle on road beginning 190' from DER, 216' left of centerline, up to 15' AGL/1007' MSL. Trees beginning 846' from DER, 127' left of centerline, up to 62' AGL/1040' MSL. Trees beginning 292' from DER, 209' right of centerline, up to 50' AGL/1045' MSL. **Rwy 17**, rising terrain beginning 66' from DER, 372' left of centerline, up to 999' MSL. Trees beginning 816' from DER, 441' left of centerline, up to 54' AGL/1049' MSL. Trees beginning 261' from DER, 264' right of centerline, up to 67' AGL/1043' MSL. **Rwy 21**, vehicle on road beginning 5' from DER, 245' left of centerline, up to 15' AGL/1021' MSL. Telephone poles and lines beginning 593' from DER, left and right of centerline, up to 70' AGL/1064' MSL.

LAMONI, IA**LAMONI MUNI (LWD)**

TAKEOFF MINIMUMS AND (OBSTACLE)

DEPARTURE PROCEDURES

ORIG 11293 (FAA)

DEPARTURE PROCEDURE: **Rwy 18**, climb heading 177° to 1600 before turning right.

TAKEOFF OBSTACLE NOTES: **Rwy 36**, trees beginning 1009' from DER, 267' right of centerline, up to 100' AGL/1200' MSL.

LE MARS, IA**LE MARS MUNI (LRJ)**

TAKEOFF MINIMUMS AND (OBSTACLE)

DEPARTURE PROCEDURES

AMDT 2 13122 (FAA)

DEPARTURE PROCEDURE: **Rwy 18**, climbing right turn heading 265° to 3200 before proceeding on course. **Rwy 36**, climb heading 005° to 1800 before proceeding on course.

TAKEOFF OBSTACLE NOTES: **Rwy 18**, sign 74' from DER, 308' right of centerline, 18' AGL/ 1206' MSL. Vehicles on road beginning 151' from DER, left and right of centerline, up to 15' AGL/ 1224' MSL. Poles beginning 690' from DER, 264' left of centerline, up to 29' AGL/ 1234' MSL. Trees beginning 709' from DER, 330' left of centerline, up to 56' AGL/1265' MSL. Building 840' from DER, 384' left of centerline, 12' AGL/ 1222' MSL. Light pole 875' from DER, 361' left of centerline, 23' AGL/ 1233' MSL. Silos beginning 1990' from DER, 345' left of centerline, up to 53' AGL/1260' MSL. **Rwy 36**, vehicles on road beginning 644' from DER, 649' left of centerline, up to 15' AGL/ 1224' MSL. Trees beginning 409' from DER, 370' right of centerline, up to 57' AGL/ 1257' MSL. Trees beginning 2306' from DER, 99' left of centerline, up to 91' AGL/ 1311' MSL.

07 DEC 2017 to 04 JAN 2018

07 DEC 2017 to 04 JAN 2018

**TAKEOFF MINIMUMS, (OBSTACLE) DEPARTURE PROCEDURES, AND
DIVERSE VECTOR AREA (RADAR VECTORS)**

17341

TAKEOFF MINIMUMS, (OBSTACLE) DEPARTURE PROCEDURES, AND DIVERSE VECTOR AREA (RADAR VECTORS)

17341

LEBANON, MO

FLOYD W JONES LEBANON (LBO)
TAKEOFF MINIMUMS AND (OBSTACLE)
DEPARTURE PROCEDURES
ORIG 10154 (FAA)

TAKEOFF MINIMUMS: **Rwy 36**, 300-1¼ or std. w/ min. climb of 245' per NM to 1600', or alternatively, with standard TAKEOFF minimums and a normal 200' per NM climb gradient, TAKEOFF must occur no later than 2000' prior to DER.

TAKEOFF OBSTACLE NOTES: **Rwy 18**, multiple trees beginning 49' from DER, 388' right of centerline, up to 88' AGL/1398' MSL. Pole 440' from DER, 409' right of centerline, up to 44' AGL/1334' MSL. **Rwy 36**, multiple poles and trees beginning 151' from DER, 366' left of centerline, up to 72' AGL/1372' MSL. Multiple trees beginning 679' from DER, 504' right of centerline, up to 67' AGL/1367' MSL. Tower 5528' from DER, 186' right of centerline, up to 182' AGL/1472' MSL.

LEE'S SUMMIT, MO

LEE'S SUMMIT MUNI (LXT)
TAKEOFF MINIMUMS AND (OBSTACLE)
DEPARTURE PROCEDURES
ORIG 07242 (FAA)

TAKEOFF OBSTACLE NOTES: **Rwy 18**, multiple trees beginning 13' from DER, 116' left of centerline, up to 63' AGL/1062' MSL. **Rwy 11**, building 140' from DER, 388' left of centerline, 24' AGL/1023' MSL. Multiple buildings 169' from DER, 334' right of centerline, 26' AGL/1019' MSL. Multiple trees beginning 233' from DER, 182' left of centerline, up to 40' AGL/ 1039' MSL. **Rwy 29**, multiple antennas and poles 402' from DER, 408' right of centerline, up to 35' AGL/1024' MSL. Tank 344' from DER, 419' right of centerline, 13' AGL/1002' MSL. Multiple trees beginning 648' from DER, 73' left of centerline, up to 67' AGL/1036' MSL. **Rwy 36**, pole 77' from DER, 316' right of centerline, 11' AGL/1010' MSL. Post 39' from DER, 461' right of centerline, 8' AGL/1007' MSL. Multiple trees beginning 206' from DER, 241' right of centerline, up to 39' AGL/1028' MSL. Multiple trees beginning 241' from DER, 93' left of centerline, up to 36' AGL/1015' MSL.

MACON, MO

MACON-FOWER MEMORIAL (K89)
TAKEOFF MINIMUMS AND (OBSTACLE)
DEPARTURE PROCEDURES
ORIG 14093 (FAA)

TAKEOFF MINIMUMS: **Rwy 2**, 300-1½ or std. w/min. climb of 254' per NM to 1200.

TAKEOFF OBSTACLE NOTES: **Rwy 2**, terrain beginning 15' from DER, 82' left of centerline, up to 854' MSL. Trees beginning 20' from DER, 268' left of centerline, up to 74' AGL/912' MSL. Trees and telephone lines beginning 356' from DER, 70' left of centerline, up to 84' AGL/890' MSL. Terrain beginning 4' from DER, 92' right of centerline, up to 854' MSL. Trees beginning 46' from DER, 287' right of centerline, up to 66' AGL/914' MSL. Trees, telephone line, and pole beginning 278' from DER, 2' right of centerline, up to 75' AGL/902' MSL. Antenna 1.1 NM from DER, 1426' left of centerline, 202' AGL/1059' MSL. **Rwy 20**, trees beginning 33' from DER, 454' left of centerline, up to 53' AGL/929' MSL. Poles beginning 425' from DER, 133' left of centerline, up to 38' AGL/909' MSL. Trees beginning 1111' from DER, 4' left of centerline, up to 66' AGL/928' MSL. Trees beginning 1999' from DER, 163' left of centerline, up to 85' AGL/934' MSL. Tree 2542' from DER, 503' left of centerline, 91' AGL/942' MSL. Crane 42' from DER, 433' right of centerline, 13' AGL/884' MSL. Poles beginning 498' from DER, 548' right of centerline, up to 38' AGL/912' MSL. Poles beginning 865' from DER, 100' right of centerline, up to 38' AGL/907' MSL. Tree 1078' from DER, 674' right of centerline, 62' AGL/933' MSL. Trees beginning 1201' from DER, 53' right of centerline, up to 69' AGL/937' MSL.

MALDEN, MO

MALDEN RGNL (MAW)
TAKEOFF MINIMUMS AND (OBSTACLE)
DEPARTURE PROCEDURES
ORIG 09295 (FAA)

DEPARTURE PROCEDURE: **Rwy 32**, climb heading 317° to 900 before turning left.

TAKEOFF OBSTACLE NOTES: **Rwy 14**, trees 1619' from DER, 856' right of centerline, 100' AGL/394' MSL. **Rwy 18**, trees 2744' from DER, 996' left of centerline, 100' AGL/394' MSL. Trees 2766' from DER, 1042' right of centerline, 100' AGL/394' MSL. **Rwy 36**, trees 2841' from DER, 1157' left of centerline, 100' AGL/399' MSL.

MAPLETON, IA

JAMES G WHITING MEMORIAL FIELD
(MEY)
TAKEOFF MINIMUMS AND (OBSTACLE)
DEPARTURE PROCEDURES
AMDT 1 10042 (FAA)

TAKEOFF MINIMUMS: **Rwy 2**, 400-2¼ or std. w/ min. climb of 417' per NM to 1700. **Rwy 20**, 500-2¼ or std. w/ a min. climb of 249' per NM to 1700.

DEPARTURE PROCEDURE: **Rwy 2**, climb heading 019° to 1700 before turning left. **Rwy 20**, climb heading 199° to 1700 before turning left.

TAKEOFF OBSTACLE NOTES: **Rwy 2**, tree 5817' from DER, 748' left of centerline, 100' AGL/1419' MSL.

TAKEOFF MINIMUMS, (OBSTACLE) DEPARTURE PROCEDURES, AND DIVERSE VECTOR AREA (RADAR VECTORS)

17341

TAKEOFF MINIMUMS, (OBSTACLE) DEPARTURE PROCEDURES, AND DIVERSE VECTOR AREA (RADAR VECTORS)

17341

MAQUOKETA, IA

MAQUOKETA MUNI (OQW)

TAKEOFF MINIMUMS AND (OBSTACLE)
DEPARTURE PROCEDURES

AMDT 1 10154 (FAA)

TAKEOFF OBSTACLE NOTES: **Rwy 15**, terrain beginning 175' from DER, 59' right of centerline, up to 824' MSL. Trees beginning 2209' from DER, 222' right of centerline, up to 50' AGL/889' MSL. Terrain beginning 94' from DER, 70' left of centerline, up to 745' MSL. **Rwy 33**, multiple power lines beginning 992' from DER, left and right of centerline, up to 50' AGL/829' MSL. Trees beginning 1423' from DER, 607' right of centerline, up to 50' AGL/909' MSL. Terrain beginning 1030' from DER, 655' right of centerline, up to 909' MSL.

MARSHALL, MO

MARSHALL MEMORIAL MUNI (MHL)

TAKEOFF MINIMUMS AND (OBSTACLE)
DEPARTURE PROCEDURES

ORIG-A 12040 (FAA)

TAKEOFF MINIMUMS: **Rwy 18**, std. with a min. climb of 284' per NM to 2100, or 1300-3 for climb in visual conditions. **Rwy 36**, std. with a min. climb of 263' per NM to 1500, or 1300-3 for climb in visual conditions. DEPARTURE PROCEDURE: **Rwys 18, 36**, for climb in visual conditions: Cross Marshall Memorial Muni airport at or above 1900 MSL before proceeding on course.

TAKEOFF OBSTACLE NOTES: **Rwy 18**, antenna on bldg 277' from DER, 573' left of centerline, 42' AGL/811' MSL. Light pole 230' from DER, 447' left of centerline, 32' AGL/801' MSL. **Rwy 36**, trees beginning 84' from DER, 15' right and left of centerline, up to 121' AGL/892' MSL. Poles beginning 24' from DER, 357' left and right of centerline, up to 22' AGL/446' MSL.

MARSHALLTOWN, IA

MARSHALLTOWN MUNI (MIW)

TAKEOFF MINIMUMS AND (OBSTACLE)
DEPARTURE PROCEDURES

AMDT 1 13234 (FAA)

TAKEOFF OBSTACLE NOTES: **Rwy 13**, runway end indicator lights 27' from DER, 126' left and right of centerline, up to 5' AGL/974' MSL. Vehicles on road beginning 37' from DER, left and right of centerline, up to 15' AGL/988' MSL. Tree 96' from DER, 167' left of centerline, 19' AGL/988' MSL. Trees beginning 1984' from DER, 777' right of centerline, up to 100' AGL/1059' MSL. **Rwy 18**, vehicles on road beginning 585' from DER, left and right of centerline, up to 15' AGL/994' MSL. Tree 1152' from DER 511' right of centerline, 100' AGL/1069' MSL. **Rwy 31**, trees beginning 5' from DER, 384' right of centerline, up to 50' AGL/1029' MSL. Trees beginning 55' from DER, 424' left of centerline, up to 36' AGL/1005' MSL. Transmission tower 60' from DER, 478' right of centerline, 23' AGL/1002' MSL. **Rwy 36**, trees beginning 191' from DER, 175' right of centerline, up to 11' AGL/981' MSL. Trees beginning 514' from DER, 465' left of centerline, up to 44' AGL/1023' MSL.

MARYVILLE, MO

NORTHWEST MISSOURI RGNL (EVU)

TAKEOFF MINIMUMS AND (OBSTACLE)
DEPARTURE PROCEDURES

AMDT 4 13290 (FAA)

DEPARTURE PROCEDURE: **Rwy 32**, climb heading 323° to 1800 before turning right.

TAKEOFF OBSTACLE NOTES: **Rwy 32**, tree 436' from DER, 321' left of centerline, 58' AGL/1156' MSL.

MASON CITY, IA

MASON CITY MUNI (MCW)

TAKEOFF MINIMUMS AND (OBSTACLE)
DEPARTURE PROCEDURES

ORIG-A 15316 (FAA)

TAKEOFF OBSTACLE NOTES: **Rwy 12**, building 1599' from DER, 461' left of centerline, 53' AGL/1233' MSL. Tree 1619' from DER, 722' left of centerline, up to 56' AGL/1245' MSL. Trees beginning 2919' from DER, 1006' left of centerline, up to 100' AGL/1289' MSL. Trees beginning 2900' from DER, 978' right of centerline, up to 100' AGL/1289' MSL. **Rwy 18**, trees beginning 1280' from DER, 703' left of centerline, up to 56' AGL/1236' MSL. Trees 1652' from DER, 699' right of centerline, up to 63 AGL/1243' MSL. **Rwy 30**, tree 54' from DER, 487' left of centerline, 45' AGL/1254' MSL. Bush 69' from DER, 333' left of centerline, 7' AGL/1216' MSL. Tree 859' from DER, 549' left of centerline, 27' AGL/1263' MSL. Pole 899' from DER, 559' right of centerline, 26' AGL/1235' MSL. Pole 1197' from DER, 354' right of centerline, 27' AGL/1246' MSL. Pole 1218' from DER, 332' right of centerline, 36' AGL/1246' MSL. Tree 1714' from DER, 167' right of centerline, 53' AGL/1272' MSL. Tree 1798' from DER, 57' right of centerline, 53' AGL/1272' MSL. Trees beginning 2042' from DER, 821' right of centerline, up to 100' AGL/1339' MSL. Tree 2364' from DER, 551' right of centerline, 73' AGL/1302' MSL. Obstruction light on building 2434' from DER, 232' right of centerline, 53' AGL/1282' MSL. Tree 2608' from DER, 236' right of centerline, 68' AGL/1297' MSL. Trees beginning 4008' from DER, 1487' left of centerline, up to 100' AGL/1319' MSL. Trees beginning 4421' from DER, 961' left of centerline, up to 100' AGL/1329' MSL.

MEMPHIS, MO

MEMPHIS MEMORIAL (03D)

TAKEOFF MINIMUMS AND (OBSTACLE)
DEPARTURE PROCEDURES

ORIG 15008 (FAA)

TAKEOFF OBSTACLE NOTES: **Rwy 12**, trees beginning 119' from DER, 320' right of centerline, up to 80' AGL/845' MSL. Power line poles beginning 165' from DER, 400' left of centerline, 29' AGL/836' MSL. Trees beginning 329' from DER, 202' left of centerline, up to 60' AGL/845' MSL. **Rwy 30**, road beginning 33' from DER, 250' left of centerline, 15' AGL/823' MSL. Trees beginning 68' from DER, 252' right of centerline, up to 70' AGL/875' MSL. Power line poles beginning 950' from DER, 449' right of centerline, 31' AGL/837' MSL. Windsock and poles beginning 1074' from DER, 113' left of centerline, 24' AGL/845' MSL. Trees beginning 988' from DER, 283' left of centerline, up to 70' AGL/878' MSL. Terrain beginning 99' from DER, 169' right of centerline, up to 816' MSL.

TAKEOFF MINIMUMS, (OBSTACLE) DEPARTURE PROCEDURES, AND DIVERSE VECTOR AREA (RADAR VECTORS)

17341

TAKEOFF MINIMUMS, (OBSTACLE) DEPARTURE PROCEDURES, AND DIVERSE VECTOR AREA (RADAR VECTORS)

17341

MEXICO, MO

MEXICO MEMORIAL (MYJ)

TAKEOFF MINIMUMS AND (OBSTACLE)

DEPARTURE PROCEDURES

ORIG 04050 (FAA)

TAKEOFF MINIMUMS: **Rwy 24**, std. with a min. climb of 230' per NM to 2200, or 900-2½ for climb in visual conditions. **Rwy 36**, NA, obstacles.

DEPARTURE PROCEDURE: **Rwy 24**, for climb in visual conditions: cross Mexico Memorial Airport at or above 1700.

TAKEOFF OBSTACLE NOTES: **Rwy 6**, multiple trees and antennas beginning 60' from DER, left and right of centerline, up to 100' AGL/902' MSL.

MILFORD, IA

FULLER (4D8)

TAKEOFF MINIMUMS AND (OBSTACLE)

DEPARTURE PROCEDURES

TAKEOFF MINIMUMS: **Rwys 9, 18, 36**, 300-1. **Rwy 27**, 600-2.

DEPARTURE PROCEDURE: **Rwys 9, 18, 36**, climb runway heading to 2000 before turning.

MOBERLY, MO

OMAR N BRADLEY (MBY)

TAKEOFF MINIMUMS AND (OBSTACLE)

DEPARTURE PROCEDURES

ORIG 11181 (FAA)

TAKEOFF OBSTACLE NOTES: **Rwy 5**, trees 310' from DER, 326' left of centerline, 100' AGL/959' MSL. Trees 1244' from DER, 786' left of centerline, 100' AGL/959' MSL.

Rwy 13, multiple trees beginning 1139' from DER, 212' right of centerline, up to 83' AGL/913' MSL. Multiple trees beginning 1515' from DER, 430' left of centerline, up to 91' AGL/921' MSL. **Rwy 23**, vehicle on road, 250' from DER, crossing left to right, 15' AGL/884' MSL. Vehicle on road, 530' from DER, crossing right to left, 15' AGL/884' MSL. Trees 1375' from DER, 146' right of centerline, 100' AGL/959' MSL.

Rwy 31, vehicle on road, 63' from DER, crossing right to left, 15' AGL/877' MSL. Multiple trees and buildings beginning 145' from DER, 204' right of centerline, up to 77' AGL/937' MSL. Multiple trees beginning 788' from DER, 312' right of centerline, up to 74' AGL/924' MSL. Vehicle on road, 310' from DER, crossing left to right, 15' AGL/871' MSL. Trees 890' from DER, 509' left of centerline, 52' AGL/892' MSL. Building 855' from DER, 296' left of centerline, 22' AGL/888' MSL.

MONETT, MO

MONETT RGNL (HFJ)

TAKEOFF MINIMUMS AND (OBSTACLE)

DEPARTURE PROCEDURES

AMDT 2 14317 (FAA)

TAKEOFF OBSTACLE NOTES: **Rwy 18**, fence 1' from DER, 437' left of centerline, 6' AGL/1301' MSL. Trees beginning 542' from DER, left and right of centerline, up to 100' AGL/1379' MSL. **Rwy 36**, multiple antennas, buildings, trees, light poles and hangars beginning 24' from DER, 494' right of centerline, up to 30' AGL/1346' MSL. Tree 832' from DER, 508' right of centerline, 100' AGL/1399' MSL.

MONROE CITY, MO

CAPTAIN BEN SMITH AIRFIELD-MONROE CITY (K52)

TAKEOFF MINIMUMS AND (OBSTACLE)

DEPARTURE PROCEDURES

ORIG 10322 (FAA)

TAKEOFF OBSTACLE NOTES: **Rwy 9**, tree 2845' from DER, 875' left of centerline, 100' AGL/844' MSL. Tree 607' from DER, on centerline, 80' AGL/819' MSL. **Rwy 27**, tree 34' from DER, 466' right of centerline, 100' AGL/839' MSL. Vehicle on road beginning 454' from DER, 571' right of centerline, 15' AGL/754' MSL.

MONTICELLO, IA

MONTICELLO RGNL (MXO)

TAKEOFF MINIMUMS AND (OBSTACLE)

DEPARTURE PROCEDURES

AMDT 4 01361 (FAA)

TAKEOFF OBSTACLE NOTES: **Rwy 15**, 969' MSL tree 2849' from DER, 60' right of centerline.

MONTICELLO, MO

LEWIS COUNTY RGNL (6M6)

TAKEOFF MINIMUMS AND (OBSTACLE)

DEPARTURE PROCEDURES

ORIG 06271 (FAA)

TAKEOFF OBSTACLE NOTES: **Rwy 36**, tree 2609' from DER, 980' right of centerline, 45' AGL/741' MSL.

MOSBY, MO

MIDWEST NATIONAL AIR CENTER (GPH)

TAKEOFF MINIMUMS AND (OBSTACLE)

DEPARTURE PROCEDURES

AMDT 1 07354 (FAA)

TAKEOFF OBSTACLE NOTES: **Rwy 18**, multiple trees beginning 1562' from DER, 16' right of centerline, up to 100' AGL/861' MSL. Multiple trees beginning 1278' from DER, 46' left of centerline, up to 100' AGL/859' MSL.

Rwy 36, multiple trees beginning 2224' from DER, 57' right of centerline, up to 100' AGL/889' MSL. Multiple trees beginning 2302' from DER, 231' left of centerline, up to 100' AGL/916' MSL.

07 DEC 2017 to 04 JAN 2018

07 DEC 2017 to 04 JAN 2018

TAKEOFF MINIMUMS, (OBSTACLE) DEPARTURE PROCEDURES, AND DIVERSE VECTOR AREA (RADAR VECTORS)

17341

TAKEOFF MINIMUMS, (OBSTACLE) DEPARTURE PROCEDURES, AND DIVERSE VECTOR AREA (RADAR VECTORS)

17341

MOUNT PLEASANT, IA

MOUNT PLEASANT MUNI (MPZ)

TAKEOFF MINIMUMS AND (OBSTACLE)
DEPARTURE PROCEDURES

AMDT 2 10266 (FAA)

TAKEOFF MINIMUMS: **Rwys 3, 21**, NA-Environmental.
Rwy 33, 400-2½ or std. w/ min. climb of 244' per NM to 1300.

TAKEOFF OBSTACLE NOTES: **Rwy 15**, equipment 3' from DER, 261' right of centerline, up to 10' AGL/734' MSL. **Rwy 33**, trees beginning 178' from DER, 235' right of centerline, up to 80' AGL/751' MSL. Trees beginning 333' from DER, 209' left of centerline, up to 80' AGL/753' MSL.

MOUNTAIN GROVE, MO

MOUNTAIN GROVE MEMORIAL (1MO)

TAKEOFF MINIMUMS AND (OBSTACLE)
DEPARTURE PROCEDURES

AMDT 1 10070 (FAA)

TAKEOFF MINIMUMS: **Rwy 8**, 300-1¼ or std. w/ min. climb of 221' per NM to 1700, or alternatively, with standard TAKEOFF minimums and a normal 200'/NM climb gradient. TAKEOFF must occur no later than 1600' prior to DER.

DEPARTURE PROCEDURE: **Rwy 8**, climb heading 080° to 2100 before turning right.

TAKEOFF OBSTACLE NOTES: **Rwy 8**, trees beginning 24' from DER, 139' right of centerline, up to 100' AGL/1639' MSL. Trees beginning 37' from DER, 115' left of centerline, up to 100' AGL/1619' MSL. Vehicles on road beginning 217' from DER, on centerline, up to 15' AGL/1514' MSL. **Rwy 26**, trees beginning 4' from DER, 64' right of centerline, up to 100' AGL/1579' MSL. Trees beginning 32' from DER, 81' left of centerline, up to 100' AGL/1579' MSL.

MOUNTAIN VIEW, MO

MOUNTAIN VIEW (MNF)

TAKEOFF MINIMUMS AND (OBSTACLE)
DEPARTURE PROCEDURES

AMDT 4 11069 (FAA)

TAKEOFF MINIMUMS: **Rwy 28**, std. w/ min. climb of 570' per NM to 2100 or 400-2¼ with min. climb of 373' per NM to 2100 or 900-2½ for climb in visual conditions.

DEPARTURE PROCEDURE: **Rwy 28**, for climb in visual conditions cross Mountain View Airport at or above 1900 before proceeding on course.

TAKEOFF OBSTACLE NOTES: **Rwy 10**, vehicle on road 1011' from DER, left to right of centerline, up to 15' AGL/ 1174' MSL. Stadium lights beginning 762' from DER, 206' left of centerline, up to 100' AGL/1239' MSL. Building 150' from DER, 521' left of centerline, 20' AGL/1159' MSL. Trees beginning 336' from DER, 70' right of centerline, up to 60' AGL/1279' MSL. **Rwy 28**, trees beginning 50' from DER, 126' right of centerline, up to 60' AGL/1239' MSL. Power lines beginning 858' from DER, 208' right of centerline, up to 100' AGL/1299' MSL. Trees beginning 191' from DER, 369' left of centerline, up to 60' AGL/1339' MSL. Trees beginning 2043' from DER, 666' right of centerline, up to 60' AGL/1379' MSL. Tower 1.7 NM from DER, 2174' left of centerline, 215' AGL/1531' MSL.

MUSCATINE, IA

MUSCATINE MUNI (MUT)

TAKEOFF MINIMUMS AND (OBSTACLE)
DEPARTURE PROCEDURES

AMDT 3A 17341 (FAA)

TAKEOFF MINIMUMS: **Rwy 24**, 300-2, or std. w/ min. climb of 220 feet per NM to 1000. **Rwy 30**, 300-1%, or std. w/ min. climb of 310 feet per NM to 1000.

DEPARTURE PROCEDURE: **Rwy 6**, climb heading 060° to 2300 before proceeding on course. **Rwy 12**, climb heading 123° to 2300 before proceeding on course. **Rwy 24**, climb heading 240° to 2300 before proceeding on course. **Rwy 30**, climb heading 306° to 2300 before proceeding on course.

TAKEOFF OBSTACLE NOTES: **Rwy 6**, tree 635' from DER, 549' right of centerline, 560' MSL. Tree 1422' from DER, 640' right of centerline, 582' MSL. **Rwy 12**, ground 28' from DER, 211' right of centerline, 544' MSL. Building, tree beginning 733' from DER, 586' right of centerline, up to 577' MSL. Rod on OL tower, AWOS beginning 1122' from DER, 744' left of centerline, up to 580' MSL. Pole 1122' from DER, 744' left of centerline, 34' AGL/578' MSL. **Rwy 24**, tree 218' from DER, 531' left of centerline, 567' MSL. Tree 1922' from DER, 421' right of centerline, 594' MSL. Tree 1949' from DER, 271' right of centerline, 599' MSL. Trees beginning 2566' from DER, 326' left of centerline, up to 616' MSL. Tree 1.4 NM from DER, 1830' right of centerline, 768' MSL. Trees beginning 1.4 NM from DER, 2028' left of centerline, up to 780' MSL. Tree 1.5 NM from DER, 683' left of centerline, 789' MSL. Trees beginning 1.5 NM from DER, 2257' right of centerline, up to 794' MSL. Tree 1.5 NM from DER, 602' left of centerline, 795' MSL. Tree 1.5 NM from DER, 2856' right of centerline, 802' MSL. Trees beginning 1.6 NM from DER, 403' left of centerline, up to 807' MSL. Tree 1.7 NM from DER, 1965' right of centerline, 810' MSL. Tree 1.7 NM from DER, 3227' right of centerline, 815' MSL. Tree 1.7 NM from DER, 1971' right of centerline, 815' MSL. Tree 1.7 NM from DER, 355' left of centerline, 827' MSL. **Rwy 30**, NAVIAD, REIL beginning 20' from DER, 79' left of centerline, up to 1' AGL/537' MSL. Fence beginning 28' from DER, 499' right of centerline, up to 543' MSL. Tree, fence beginning 54' from DER, 500' left of centerline, up to 544' MSL. Tree 383' from DER, 333' right of centerline, 546' MSL. Trees beginning 420' from DER, 485' left of centerline, up to 577' MSL. Tree, building, elevator beginning 658' from DER, 308' left of centerline, up to 591' MSL. Pole beginning 1752' from DER, 826' right of centerline, up to 56' AGL/593' MSL. Trees beginning 1.2 NM from DER, 2284' left of centerline, up to 757' MSL. Tree 1.2 NM from DER, 2386' left of centerline, 779' MSL. Trees beginning 1.2 NM from DER, 2062' left of centerline, up to 821' MSL. Trees beginning 1.3 NM from DER, 1392' left of centerline, up to 837' MSL. Trees beginning 1.3 NM from DER, 1044' left of centerline, up to 846' MSL. Trees beginning 1.3 NM from DER, 1363' left of centerline, up to 847' MSL. Trees beginning 1.3 NM from DER, 1136' left of centerline, up to 848' MSL. Tree, building, ground beginning 1.3 NM from DER, 0' of centerline, up to 852' MSL. Trees beginning 1.5 NM from DER, 41' right of centerline, up to 857' MSL. Tree, ground, pole beginning 1.5 NM from DER, 51' left of centerline, up to 860' MSL. Trees beginning 1.6 NM from DER, 117' left of centerline, up to 861' MSL. Tree 2 NM from DER, 418' left of centerline, 852' MSL.

07 DEC 2017 to 04 JAN 2018

07 DEC 2017 to 04 JAN 2018

TAKEOFF MINIMUMS, (OBSTACLE) DEPARTURE PROCEDURES, AND DIVERSE VECTOR AREA (RADAR VECTORS)

17341

TAKEOFF MINIMUMS, (OBSTACLE) DEPARTURE PROCEDURES, AND
DIVERSE VECTOR AREA (RADAR VECTORS)

17341

NEOSHO, MO

NEOSHO HUGH ROBINSON (EOS)
 TAKEOFF MINIMUMS AND (OBSTACLE)
 DEPARTURE PROCEDURES

AMDT 1 11237 (FAA)

TAKEOFF OBSTACLE NOTES: **Rwy 1**, trees beginning 89' from DER, 431' left of centerline, up to 120' AGL/1339' MSL. Trees and power poles beginning 584' from DER, 166' right of centerline, up to 120' AGL/1283' MSL. **Rwy 19**, multiple trees and towers beginning 142' from DER, 465' right of centerline, up to 183' AGL/1403' MSL. Vehicles on road beginning 318' from DER, left and right of centerline, up to 17' AGL/1276' MSL.

NEVADA, MO

NEVADA MUNI (NVD)
 TAKEOFF MINIMUMS AND (OBSTACLE)
 DEPARTURE PROCEDURES

ORIG 10266 (FAA)

TAKEOFF MINIMUMS: **Rwys 13, 31**, NA-
 Environmental.

TAKEOFF OBSTACLE NOTES: **Rwy 2**, trees beginning 2000' from DER, left and right of centerline, up to 56' AGL/945' MSL.

NEW MADRID, MO

COUNTY MEMORIAL (EIW)
 TAKEOFF MINIMUMS AND (OBSTACLE)
 DEPARTURE PROCEDURES

AMDT 1 83132 (FAA)

DEPARTURE PROCEDURE: **Rwys 18, 36**, east departures (010° CW 170°) climb to 1200 on runway heading before proceeding on course.

NEWTON, IA

NEWTON MUNI-EARL JOHNSON FIELD
 (TNU)

TAKEOFF MINIMUMS AND (OBSTACLE)
 DEPARTURE PROCEDURES
 ORIG-A 16203 (FAA)

TAKEOFF OBSTACLE NOTES: **Rwy 14**, truck on road 3112' from DER, 1243' right of centerline, 15' AGL/964' MSL, tree 7519' from DER, multiple trees beginning 2996' from DER, 1200' left of centerline, up to 100' AGL/1059' MSL. **Rwy 32**, trees 10' from DER, 437' left of centerline, 30' AGL/989' MSL, sign 126' from DER, 490' right of centerline, 8' AGL/967' MSL, truck on road 302' from DER, 513' right of centerline, 17' AGL/976' MSL, multiple trees beginning 531' from DER, 439' right of centerline, up to 32' AGL/991' MSL.

OELWEIN, IA

OELWEIN MUNI (OLZ)
 TAKEOFF MINIMUMS AND (OBSTACLE)
 DEPARTURE PROCEDURES

TAKEOFF MINIMUMS: **Rwys 18, 36**, NA -
 environmental.

DEPARTURE PROCEDURE: **Rwy 13**, climb heading 133° to 2100 before turning left. **Rwy 31**, climb heading 313° to 1500 before turning right.

TAKEOFF OBSTACLE NOTES: **Rwy 13**, rising terrain beginning 42' from DER, left and right of centerline, up to 1079' MSL. Trees 1972' from DER, 32' right of centerline, up to 100' AGL/1149' MSL. **Rwy 31**, vehicle on road 357' from DER, left and right of centerline, up to 15' AGL/1094' MSL. Poles beginning 1075' from DER, 299' right of centerline, up to 30' AGL/1109' MSL.

ORANGE CITY, IA

ORANGE CITY MUNI (ORC)
 TAKEOFF MINIMUMS AND (OBSTACLE)
 DEPARTURE PROCEDURES

ORIG 90291 (FAA)

TAKEOFF MINIMUMS: **Rwy 34**, 300-1.

OSAGE BEACH, MO

GRAND GLAIZE-OSAGE BEACH (K15)
 TAKEOFF MINIMUMS AND (OBSTACLE)
 DEPARTURE PROCEDURES

AMDT 1 90039 (FAA)

DEPARTURE PROCEDURE: **Rwys 14, 32**, maintain runway heading to 1200 before turning on course.

OSCEOLA, IA

OSCEOLA MUNI (I75)
 TAKEOFF MINIMUMS AND (OBSTACLE)
 DEPARTURE PROCEDURES

ORIG 11349 (FAA)

TAKEOFF OBSTACLE NOTES: **Rwy 18**, navaid and road beginning 40' from DER, 49' left of centerline, up to 12' AGL/1131' MSL. Navaid, trees, and road beginning 12' from DER, 3' right of centerline, up to 13' AGL/1132' MSL. **Rwy 36**, trees beginning 794' from DER, 225' left of centerline, up to 57' AGL/1166' MSL. Trees and pole beginning 581' from DER, 415' right of centerline, up to 48' AGL/1157' MSL.

OSKALOOSA, IA

OSKALOOSA MUNI (OOA)
 TAKEOFF MINIMUMS AND (OBSTACLE)
 DEPARTURE PROCEDURES

ORIG 09295 (FAA)

TAKEOFF OBSTACLE NOTES: **Rwy 13**, tree 262' from DER, 477' left of centerline, 100' AGL/939' MSL. **Rwy 31**, windsock 3' from DER, 357' right of centerline, 13' AGL/852' MSL. NAV 39' from DER, 168' right of centerline, 5' AGL/839' MSL. Tree 988' from DER, 525' right of centerline, 100' AGL/949' MSL. Tree 2056' from DER, 609' right of centerline, 59' AGL/893' MSL.

07 DEC 2017 to 04 JAN 2018

07 DEC 2017 to 04 JAN 2018

TAKEOFF MINIMUMS, (OBSTACLE) DEPARTURE PROCEDURES, AND
DIVERSE VECTOR AREA (RADAR VECTORS)

17341

TAKEOFF MINIMUMS, (OBSTACLE) DEPARTURE PROCEDURES, AND
DIVERSE VECTOR AREA (RADAR VECTORS)

17341

OTTUMWA, IA

OTTUMWA RGNL (OTM)

TAKEOFF MINIMUMS AND (OBSTACLE)

DEPARTURE PROCEDURES

ORIG-A 11265 (FAA)

TAKEOFF MINIMUMS: **Rwys 4,22**, NA-Runway data.

TAKEOFF OBSTACLE NOTES: **Rwy 13**, pole 2026' from DER, 961' left of centerline, 60' AGL/898' MSL. **Rwy 31**, trees beginning 792' from DER, 658' left of centerline, up to 65' AGL/885' MSL. Trees beginning 1571' from DER, 796' right of centerline, up to 100' AGL/919' MSL.

PELLA, IA

PELLA MUNI (PEA)

TAKEOFF MINIMUMS AND (OBSTACLE)

DEPARTURE PROCEDURES

AMDT 1 08325 (FAA)

TAKEOFF OBSTACLE NOTES: **Rwy 16**, trees, buildings and ground beginning 9' from DER, 144' left of centerline, up to 100' AGL/979' MSL. Trees beginning 54' from DER, 193' right of centerline, up to 100' AGL/959' MSL. **Rwy 34**, trees and poles beginning 838' from DER, 135' left of centerline, up to 100' AGL/979' MSL. Trees and poles beginning 226' from DER, 296' right of centerline, up to 100' AGL/989' MSL. Vehicle on road at DER, 499' right of centerline, 15' AGL/895' MSL.

PERRY, IA

PERRY MUNI (PRO)

TAKEOFF MINIMUMS AND (OBSTACLE)

DEPARTURE PROCEDURES

ORIG 08269 (FAA)

TAKEOFF MINIMUMS: **Rwys 4, 22**, NA-Environmental.

TAKEOFF OBSTACLE NOTES: **Rwy 14**, tree 40' from DER, 180' left of centerline, 13' AGL/1017' MSL. **Rwy 32**, trees beginning 1882' from DER, 917' left of centerline, up to 100' AGL/1099' MSL. Vehicles beginning 565' from DER, right to left of centerline, up to 17' AGL/1036' MSL.

PERRYVILLE, MO

PERRYVILLE RGNL (PCD)

TAKEOFF MINIMUMS AND (OBSTACLE)

DEPARTURE PROCEDURES

ORIG-A 17061 (FAA)

TAKEOFF MINIMUMS: **Rwy 2**, 400-2¾ or std. w/ min. climb of 215' per NM to 900 or alternatively, with standard takeoff minimums and normal 200'/NM climb gradient, takeoff must occur no later than 1800' prior to DER. **Rwy 20**, 400-2½ or std. w/ min. climb of 300' per NM to 800.

DEPARTURE PROCEDURE: **Rwy 2**, climb heading 017° to 1200 before proceeding on course. **Rwy 20**, climb heading 197° to 900 before turning left.

TAKEOFF OBSTACLE NOTES: **Rwy 2**, vehicles on road beginning 2' from DER, 478' right of centerline, up to 384' MSL. Tree 324' from DER, 458' left of centerline, 379' MSL. Tree 2 NM from DER, 2562' right of centerline, 713' MSL. **Rwy 20**, vehicles on road beginning 483' from DER, left and right of centerline, up to 15' AGL/386' MSL. Trees beginning 1.1 NM from DER, 354' right of centerline, up to 628' MSL. Tree 1.3 NM from DER, 1880' left of centerline, 594' MSL. Trees beginning 1.5 NM from DER, left and right of centerline, up to 680' MSL. Trees beginning 1.6 NM from DER, left and right of centerline, up to 684' MSL. Tree 1.7 NM from DER, 16' right of centerline, 714' MSL. Tree 1.8 NM from DER, 2922' left of centerline, 670' MSL.

POCAHONTAS, IA

POCAHONTAS MUNI (POH)

TAKEOFF MINIMUMS AND (OBSTACLE)

DEPARTURE PROCEDURES

AMDT 3 11237 (FAA)

TAKEOFF MINIMUMS: **Rwys 18, 36**, NA-Environmental.

TAKEOFF OBSTACLE NOTES: **Rwy 12**, road beginning 499' from DER, 70' left of centerline, 15' AGL/1238' MSL. Poles beginning 324' from DER, 404' left and right of centerline, up to 32' AGL/1252' MSL. Terrain 27' from DER, 486' right of centerline, 1222' MSL.

Rwy 30, tower 1744' from DER, 765' right of centerline, 185' AGL/ 1375' MSL. Wind sock 122' from DER, 431' right of centerline, 28' AGL/1254' MSL. Tank 85' from DER, 331' right of centerline, 5' AGL/1231' MSL.

POPLAR BLUFF, MO

POPLAR BLUFF MUNI (POF)

TAKEOFF MINIMUMS AND (OBSTACLE)

DEPARTURE PROCEDURES

AMDT 1 07242 (FAA)

TAKEOFF OBSTACLE NOTES: **Rwy 18**, multiple trees beginning 511' from DER, 515' right of centerline, up to 95' AGL/420' MSL. Multiple trees beginning 878' from DER, 109' left of centerline, up to 103' AGL/428' MSL. **Rwy 36**, multiple trees beginning 1163' from DER, 340' right of centerline, up to 66' AGL/391' MSL. Multiple trees beginning 1191' from DER, 92' left of centerline, up to 79' AGL/404' MSL.

07 DEC 2017 to 04 JAN 2018

07 DEC 2017 to 04 JAN 2018

TAKEOFF MINIMUMS, (OBSTACLE) DEPARTURE PROCEDURES, AND
DIVERSE VECTOR AREA (RADAR VECTORS)

17341

**TAKEOFF MINIMUMS, (OBSTACLE) DEPARTURE PROCEDURES, AND
DIVERSE VECTOR AREA (RADAR VECTORS)**

17341

POTOSI, MO

WASHINGTON COUNTY (8WC)

TAKEOFF MINIMUMS AND (OBSTACLE)
DEPARTURE PROCEDURES

AMDT 1 11069 (FAA)

TAKEOFF MINIMUMS: **Rwy 20**, 500-2½ or std. w/ min. climb of 270' per NM to 1600.DEPARTURE PROCEDURE: **Rwy 2**, climb heading 019° to 1600 before turning left.TAKEOFF OBSTACLE NOTES: **Rwy 20**, trees beginning 103' from DER, 464' right of centerline, up to 60' AGL/1308' MSL. Trees beginning 1222' from DER, 242' left of centerline, up to 60' AGL/1279' MSL. Vehicles on roadway 942' from DER, right and left of centerline, up to 15' AGL/994' MSL. Lookout tower 2.1 NM from DER, 138' right of centerline, 132' AGL/1380' MSL.**RED OAK, IA**

RED OAK MUNI (RDK)

TAKEOFF MINIMUMS AND (OBSTACLE)
DEPARTURE PROCEDURES

AMDT 3 11265 (FAA)

TAKEOFF MINIMUMS: **Rwys 13,31**, NA -Environmental. **Rwy 5**, 600-2¾ or std. with min. climb of 287' per NM to 1800. **Rwy 23**, 300-1¾ or std. with min. climb of 263' per NM to 1500. **Rwy 35**, 300-2 or std. w/min. climb of 284' per NM to 1400.DEPARTURE PROCEDURE: **Rwy 5**, climb heading 054° to 1800 before proceeding eastbound.TAKEOFF OBSTACLE NOTES: **Rwy 5**, towers, trees, pole and windmill beginning 1744' from DER, 51' right of centerline, up to 370' AGL/1557' MSL. Vehicles on road, trees and fence beginning 45' from DER, 150' left of centerline, up to 100' AGL/1144' MSL. **Rwy 17**, train on railroad track and trees beginning 1095' from DER, on centerline, up to 100' AGL/1160' MSL. **Rwy 23**, terrain, train on railroad track, trees and poles beginning 61' from DER, 30' right of centerline, up to 100' AGL/1319' MSL. Train on railroad track and trees beginning 1111' from DER, 33' left of centerline, up to 67' AGL/1168' MSL. **Rwy 35**, vehicles on road beginning 700' from DER, on centerline, 15' AGL/1070' MSL. Hangers, trees, power poles, buildings and silos beginning 435' from DER, 323' right of centerline, up to 100' AGL/1269' MSL. Terrain, power pole and trees beginning 828' from DER, 564' left of centerline, up to 100' AGL/1319' MSL.**ROCK RAPIDS, IA**

ROCK RAPIDS MUNI (RRQ)

TAKEOFF MINIMUMS AND (OBSTACLE)
DEPARTURE PROCEDURES

ORIG 88154 (FAA)

TAKEOFF MINIMUMS: **Rwy 16**, 300-1.**ROLLA/VICHY, MO**

ROLLA NATIONAL (VIH)

TAKEOFF MINIMUMS AND (OBSTACLE)
DEPARTURE PROCEDURES

ORIG 10266 (FAA)

TAKEOFF OBSTACLE NOTES: **Rwy 13**, multiple trees and vehicle on road beginning 465' from DER, 170' left of centerline, up to 68' AGL/1208' MSL. Multiple trees, sign, and vehicle on road beginning 297' from DER, 138' right of centerline, up to 68' AGL/1208' MSL. **Rwy 22**, multiple trees, terrain, and vehicle on road beginning 161' from DER, 168' left of centerline, up to 107' AGL/1187' MSL. Power pole, terrain, and vehicle on road beginning 126' from DER, 217' right of centerline, up to 36' AGL/1176' MSL. Vehicle on road 613' from DER, on centerline, 15' AGL/1157' MSL. **Rwy 31**, multiple trees, terrain, and vehicle on road beginning 230' from DER, 91' left of centerline, up to 30' AGL/1170' MSL. Multiple trees beginning 779' from DER, 435' right of centerline, up to 58' AGL/1178' MSL. Vehicle on road 611' from DER, on centerline, 15' AGL/1156' MSL.**SAC CITY, IA**

SAC CITY MUNI (SKI)

TAKEOFF MINIMUMS AND (OBSTACLE)
DEPARTURE PROCEDURES

ORIG 10154 (FAA)

TAKEOFF OBSTACLE NOTES: **Rwy 18**, trees beginning 675' from DER, 673' right of centerline, up to 50' AGL/1279' MSL. **Rwy 32**, vehicles on road beginning 349' from DER, 584' right of centerline, up to 15' AGL/1264' MSL. **Rwy 36**, vehicles on road beginning 562' from DER, left and right of centerline, up to 15' AGL/1264' MSL.**SALEM, MO**

SALEM MEMORIAL (K33)

TAKEOFF MINIMUMS AND (OBSTACLE)
DEPARTURE PROCEDURES

ORIG 11293 (FAA)

TAKEOFF MINIMUMS: **Rwy 17**, 400-2¼ or std. w/min. climb of 300' per NM to 1500.TAKEOFF OBSTACLE NOTES: **Rwy 17**, trees beginning 675' from DER, 675' left of centerline, up to 100' AGL/1349' MSL. Tree 911' from DER, 290' right of centerline, 34' AGL/1275' MSL. Power line beginning 942' from DER, 745' left of centerline, up to 120' AGL/1369' MSL. **Rwy 35**, tree 770' from DER, 120' right of centerline, 28' AGL/1249' MSL.

07 DEC 2017 to 04 JAN 2018

07 DEC 2017 to 04 JAN 2018

**TAKEOFF MINIMUMS, (OBSTACLE) DEPARTURE PROCEDURES, AND
DIVERSE VECTOR AREA (RADAR VECTORS)**

17341

TAKEOFF MINIMUMS, (OBSTACLE) DEPARTURE PROCEDURES, AND
DIVERSE VECTOR AREA (RADAR VECTORS)

17341

SHELDON, IA

SHELDON RGNL (SHL)

TAKEOFF MINIMUMS AND (OBSTACLE)

DEPARTURE PROCEDURES

AMDT 1 17173 (FAA)

TAKEOFF OBSTACLE NOTES: **Rwy 15**, light pole 9' from DER, 17' left of centerline, 1' AGL/1413' MSL. Light pole 10' from DER, 27' right of centerline, 1' AGL/1413' MSL. Trees beginning 1345' from DER, 422' left of centerline, up to 1473' MSL. Trees beginning 2977' from DER, 357' left of centerline, up to 1497' MSL. **Rwy 33**, light pole beginning 9' from DER, 16' left of centerline, up to 1' AGL/1421' MSL. Light pole beginning 9' from DER, 18' right of centerline, up to 1' AGL/1420' MSL. Building, light pole beginning 14' from DER, 74' left of centerline, up to 23' AGL/1441' MSL. Bush [tmp] 14' from DER, 178' right of centerline, 1423' MSL. Tree, beacon beginning 31' from DER, 459' left of centerline, up to 1479' MSL. Antenna on airport beacon, tree, road (n), railroad beginning 55' from DER, 43' left of centerline, up to 1481' MSL. Bush [tmp] 136' from DER, 196' right of centerline, 1425' MSL. Bush [tmp] 195' from DER, 350' right of centerline, 1427' MSL. Road (n) beginning 435' from DER, 166' right of centerline, up to 1436' MSL. Tree 959' from DER, 366' right of centerline, 1447' MSL. Tree 1026' from DER, 520' right of centerline, 1464' MSL. Trees beginning 1027' from DER, 456' right of centerline, up to 1467' MSL.

ST. CHARLES, MO

ST. CHARLES COUNTY SMARTT (SET)

TAKEOFF MINIMUMS AND (OBSTACLE)

DEPARTURE PROCEDURES

AMDT 2 05300 (FAA)

TAKEOFF MINIMUMS: **Rwy 36**, std. with a min. climb of 262' per NM to 1300, OR 900-2½ for climb in visual conditions.

DEPARTURE PROCEDURE: **Rwy 36**, for climb in visual conditions: cross St. Charles County Smartt airport at or above 1300 before proceeding on course.

TAKEOFF OBSTACLE NOTES: **Rwy 36**, tree 2.3 NM from DER, 3932' right of centerline, 100' AGL/891' MSL.

ST. JOSEPH, MO

ROSECRANS MEMORIAL (STJ)

TAKEOFF MINIMUMS AND (OBSTACLE)

DEPARTURE PROCEDURES

AMDT 7 12320 (FAA)

TAKEOFF MINIMUMS: **Rwy 31**, 400-2¼ or std. with a min. climb of 336' per NM to 1200.

DEPARTURE PROCEDURE: **Rwy 13**, climb heading 132° to 1600 before turning left.

TAKEOFF OBSTACLE NOTES: **Rwy 13**, light 2' from DER, 47' left of centerline, 2' AGL/813' MSL. Aircraft on taxiway beginning 40' from DER, 1' right of centerline, up to 40' AGL/854' MSL. Trees beginning 65' from DER, left and right of centerline, up to 100' AGL/919' MSL. Antenna 2247' from DER, 1075' left of centerline, 54' AGL/870' MSL. **Rwy 17**, nav aids 56' from DER, left and right of centerline, up to 6' AGL/817' MSL. Trees beginning 851' from DER, left and right of centerline, up to 100' AGL/920' MSL. Boats beginning 1061' from DER, 59' left of centerline, up to 35' AGL/839' MSL. **Rwy 31**, vertical structure 11' from DER, 1' right of centerline, 1' AGL/813' MSL. Trees beginning 401' from DER, left and right of centerline, up to 100' AGL/1149' MSL. Trees 1.1 NM from DER, 1055' left of centerline, 100' AGL/1095' MSL. Trees 1.8 NM from DER, 2987' left of centerline, 100' AGL/1149' MSL. **Rwy 35**, nav aids beginning 40' from DER, left and right of centerline, up to 13' AGL/833' MSL.

ST. LOUIS, MO

CREVE COEUR (1H0)

TAKEOFF MINIMUMS AND (OBSTACLE)

DEPARTURE PROCEDURES

AMDT 2 07354 (FAA)

TAKEOFF MINIMUMS: **Rwy 16**, 300-2¼ or std. w/ min. climb of 206' per NM to 800, or alternatively, with standard takeoff minimums and a normal 200' per NM climb gradient, takeoff must occur no later than 1300' prior to DER. **Rwy 34**, 300-2¼ or std. w/ min. climb of 337' per NM to 900.

DEPARTURE PROCEDURE: **Rwy 34**, climb heading 338° to 1100 before proceeding on course.

TAKEOFF OBSTACLE NOTES: **Rwy 16**, vehicle on road, pole and trees beginning 200' from DER, 219' right of centerline, up to 100' AGL/546' MSL. Trees beginning 100' from DER, 356' left of centerline, up to 100' AGL/719' MSL. **Rwy 34**, multiple trees beginning 1847' from DER, 418' right of centerline up to 100' AGL/749' MSL. Levee and trees beginning 744' from DER, 275' left of centerline, up to 90' AGL/612' MSL.

07 DEC 2017 to 04 JAN 2018

07 DEC 2017 to 04 JAN 2018

TAKEOFF MINIMUMS, (OBSTACLE) DEPARTURE PROCEDURES, AND
DIVERSE VECTOR AREA (RADAR VECTORS)

17341

TAKEOFF MINIMUMS, (OBSTACLE) DEPARTURE PROCEDURES, AND
DIVERSE VECTOR AREA (RADAR VECTORS)

17341

ST. LOUIS, MO (CON'T)**ST LOUIS LAMBERT INTL (STL)****TAKEOFF MINIMUMS AND (OBSTACLE)****DEPARTURE PROCEDURES**

AMDT 3 17257

TAKEOFF MINIMUMS: Rwy 11, 200-1 or std. w/min. climb of 370' per NM to 900. **Rwy 30L**, 200-1 or std. w/min. climb of 245' per NM to 800. **Rwy 30R**, 200-1 or std. w/min. climb of 230' per NM to 800.

TAKEOFF OBSTACLE NOTES: Rwy 6, railroad 577' from DER, 621' left of centerline, 557' MSL. General utility and pole beginning 1037' from DER, 632' right of centerline, up to 22' AGL/573' MSL. Building 2478' from DER, 1008' right of centerline, 60' AGL/598' MSL. **Rwy 11**, building 2347' from DER, 545' left of centerline, 67' AGL/616' MSL. Tree 2362' from DER, 690' right of centerline, 619' MSL. Tree 2680' from DER, 690' right of centerline, 632' MSL. Tree 2756' from DER, 781' right of centerline, 641' MSL. Tree and poles beginning 3013' from DER, 206' left of centerline, up to 68' AGL/650' MSL. Tree 3066' from DER, 704' right of centerline, 658' MSL. Sign, building, and tree beginning 4349' from DER, 488' right of centerline, up to 65' AGL/680' MSL. Control tower 5016' from DER, 1524' left of centerline, 219' AGL/774' MSL. Building 5293' from DER, 685' right of centerline, 98' AGL/692' MSL. Building 5517' from DER, 527' right of centerline, 114' AGL/694' MSL. **Rwy 12L**, tree 1330' from DER, 666' right of centerline, 654' MSL. **Rwy 12R**, traffic signal 1413' from DER, 702' right of centerline, 636' MSL. Tree 1930' from DER, 372' left of centerline, 636' MSL. Sign 2801' from DER, 870' right of centerline, 96' AGL/672' MSL. **Rwy 30L**, vehicles on road, NAVAID, and antenna on building beginning 283' from DER, on centerline, up to 571' MSL. Vehicles on road and traffic signal beginning 836' from DER, 217' right of centerline, up to 580' MSL. Vehicles on road 906' from DER, 600' left of centerline, 569' MSL. Terrain beginning 1375' from DER, 672' right of centerline, up to 592' MSL. Pole 1685' from DER, 640' left of centerline, 39' AGL/585' MSL. Tree and pole beginning 2466' from DER, 604' right of centerline, up to 648' MSL. Tree 3231' from DER, 791' right of centerline, 654' MSL. Tree 3507' from DER, 818' left of centerline, 663' MSL. Tree 3666' from DER, 788' right of centerline, 665' MSL. Tree and pole beginning 4487' from DER, 614' right of centerline, up to 684' MSL. Tree 5174' from DER, 404' left of centerline, 697' MSL. **Rwy 30R**, electrical system 1376' from DER, 710' right of centerline, 34' AGL/567' MSL. Tower 1896' from DER, 899' left of centerline, 54' AGL/587' MSL. Buildings beginning 1963' from DER, 561' right of centerline, up to 81' AGL/611' MSL. Tree 4051' from DER, 930' right of centerline, 631' MSL. Trees beginning 4188' from DER, 1204' right of centerline, up to 657' MSL. Tree 4694' from DER, 520' right of centerline, 658' MSL. Tree 4733' from DER, 1418' right of centerline, 668' MSL. Tree 5095' from DER, 389' right of centerline, 670' MSL. Tree 5755' from DER, 1093' right of centerline, 687' MSL. Tree 1 NM from DER, 345' right of centerline, 693' MSL. Tree 1.1 NM from DER, 1120' right of centerline, 714' MSL.

ST. LOUIS, MO (CON'T)**SPIRIT OF ST. LOUIS (SUS)****TAKEOFF MINIMUMS AND (OBSTACLE)****DEPARTURE PROCEDURES**

AMDT 2 13178 (FAA)

TAKEOFF MINIMUMS: Rwy 8R, 200-1¼ or std. w/ min. climb of 238' per NM to 700. **Rwy 26L**, 300-2 or std. w/ min. climb of 231' per NM to 900.

TAKEOFF OBSTACLE NOTES: Rwy 8L, fence 46' from DER, 338' right of centerline, 8' AGL/465' MSL. Building 174' from DER, 498' right of centerline, 38' AGL/495' MSL. Tree 383' from DER, 426' right of centerline, 31' AGL/488' MSL. OL on pole 1215' from DER, 96' right of centerline, 43' AGL/496' MSL. Multiple poles beginning 1202' from DER, 231' right of centerline, up to 48' AGL/498' MSL. Trees beginning 1245' from DER, 52' left of centerline, up to 80' AGL/533' MSL. Trees beginning 1229' from DER, 95' right of centerline, up to 60' AGL/516' MSL. **Rwy 8R**, antenna 263' from DER, 557' left of centerline, 40' AGL/487' MSL. Railroad car 752' from DER, 19' left of centerline, 23' AGL/482' MSL. Antenna on building 142' from DER, 241' left of centerline, 8' AGL/470' MSL. Trees 5357' from DER, 1793' right of centerline, up to 100' AGL/626' MSL. **Rwy 26L**, tree 2240' from DER, 508' right of centerline, 58' AGL/521' MSL. Tree 1.7 NM from DER, 2670' left of centerline, 100' AGL/759' MSL. **Rwy 26R**, tree 33' from DER, 430' right of centerline, up to 9' AGL/464' MSL. Multiple poles beginning 1269' from DER, left and right of centerline, up to 68' AGL/518' MSL. Trees beginning 1999' from DER, right and left of centerline, up to 154' AGL/601' MSL.

SEDALIA, MO**SEDALIA RGNL (DMO)****TAKEOFF MINIMUMS AND (OBSTACLE)****DEPARTURE PROCEDURES**

AMDT 1 13234 (FAA)

TAKEOFF OBSTACLE NOTES: Rwy 5, trees beginning 238' from DER, 121' right of centerline, up to 71' AGL/950' MSL. Tree 2388' from DER, 355' left of centerline, 77' AGL/946' MSL. Buildings beginning 70' from DER, 447' left of centerline, up to 17' AGL/906' MSL. **Rwy 18**, trees beginning 88' from DER, left and right of centerline, up to 61' AGL/970' MSL. **Rwy 23**, trees beginning 6' from DER, left and right of centerline, up to 78' AGL/991' MSL. Vehicle on road, 23' from DER 504' left of centerline, 8' AGL/927' MSL. Communication tower 4771' from DER, 582' right of centerline, 163' AGL/1032' MSL. **Rwy 36**, trees beginning 583' from DER, 598' right of centerline, up to 68' AGL/ 927' MSL. Terrain beginning 151' from DER, 307' left of centerline, up to 889' MSL.

07 DEC 2017 to 04 JAN 2018

07 DEC 2017 to 04 JAN 2018

TAKEOFF MINIMUMS, (OBSTACLE) DEPARTURE PROCEDURES, AND
DIVERSE VECTOR AREA (RADAR VECTORS)

17341

TAKEOFF MINIMUMS, (OBSTACLE) DEPARTURE PROCEDURES, AND DIVERSE VECTOR AREA (RADAR VECTORS)

17341

SHENANDOAH, IA

SHENANDOAH MUNI (SDA)
TAKEOFF MINIMUMS AND (OBSTACLE)
DEPARTURE PROCEDURES

AMDT 1 06271 (FAA)

TAKEOFF MINIMUMS: **Rwy 4**, 500-3 or std. w/ min. climb of 260' per NM to 1700. **Rwy 12**, 500-2 ¾ or std. w/ min. climb of 280' per NM to 1600.

TAKEOFF OBSTACLE NOTES: **Rwy 4**, towers 2.5 NM from DER, 3155' right of centerline, 491' AGL/1463' MSL. **Rwy 12**, tower 2.2 NM from DER, 2351' left of centerline, 317' AGL/1437' MSL. **Rwy 22**, tree 2023' from DER, 508' left of centerline, 61' AGL/1030' MSL. Catenary 965' from DER, 427' left of centerline, 35' AGL/999' MSL. Bush 101' from DER, 171' right of centerline, 8' AGL/972' MSL. Pole 1132' from DER, 253' left of centerline, 32' AGL/996' MSL. Fence 200' from DER, 392' left of centerline, 3' AGL/967' MSL. **Rwy 30**, trees 950' from DER, 200' right of centerline, 75' AGL/1024' MSL.

SIBLEY, IA

SIBLEY MUNI (ISB)
TAKEOFF MINIMUMS AND (OBSTACLE)
DEPARTURE PROCEDURES

ORIG 11125 (FAA)

TAKEOFF MINIMUMS: **Rwy 35**, 300-1½ or std. w/min. climb of 275' per NM to 1900.

TAKEOFF OBSTACLE NOTES: **Rwy 17**, numerous trees beginning 1798' from DER, on runway centerline, up to 100' AGL/1629' MSL. Vehicles on road 71' from DER, 499' right of centerline, 10' AGL/1539' MSL. **Rwy 35**, vehicles on road 189' from DER, 530' left of centerline, 15' AGL/1564' MSL. Train 401' from DER, 564' left of centerline, 23' AGL/1572' MSL. Numerous trees beginning 550' from DER, 564' left of centerline, 100' AGL/1649' MSL.

SIKESTON, MO

SIKESTON MEMORIAL MUNI (SIK)
TAKEOFF MINIMUMS AND (OBSTACLE)
DEPARTURE PROCEDURES

AMDT 1 13206 (FAA)

TAKEOFF OBSTACLE NOTES: **Rwy 2**, tree 196' from DER, 462' right of centerline, 21' AGL/335' MSL. Sign 227' from DER, 490' left of centerline, 13' AGL/323' MSL. Trees beginning 933' from DER, 502' right of centerline, 30' AGL/340' MSL. Trees beginning 952' from DER, 670' right of centerline, up to 64' AGL/373' MSL. Trees beginning 1111' from DER, 415' right of centerline, up to 80' AGL/389' MSL. Trees beginning 2830' from DER, 766' left of centerline, up to 86' AGL/391' MSL. Trees beginning 3278' from DER, 635' right of centerline, up to 90' AGL/399' MSL. **Rwy 20**, sign 161' from DER, 442' right of centerline, 11' AGL/320' MSL. Light pole 178' from DER, 409' right of centerline, 30' AGL/340' MSL. Trees beginning 280' from DER, 482' right of centerline, up to 12' AGL/322' MSL. Light poles beginning at 363' from DER, left and right of centerline, up to 30' AGL/339' MSL. Roof peak 845' from DER, 502' left of centerline, 29' AGL/341' MSL. Trees beginning 1088' from DER, 628' right of centerline, 34' AGL/341' MSL. Rod on light pole 1167' from DER, 798' left of centerline, 34' AGL/348' MSL. Trees beginning 1242' from DER, 421' right of centerline, up to 70' AGL/377' MSL. Trees beginning 2305' from DER, 357' right of centerline, up to 86' AGL/407' MSL.

SIoux CENTER, IA

SIoux CENTER MUNI (SOY)
TAKEOFF MINIMUMS AND (OBSTACLE)
DEPARTURE PROCEDURES

AMDT 2 10154 (FAA)

DEPARTURE PROCEDURE: **Rwy 18**, climb heading 174° to 2000 before turning east.

TAKEOFF OBSTACLE NOTES: **Rwy 18**, trees beginning 313' from DER, 550' left of centerline to 613' right of centerline, up to 110' AGL/1569' MSL. Farm SILO 700' from DER, 321' right of centerline 95' AGL/1554' MSL. **Rwy 36**, trees 934' from DER, 687' left of centerline up to 110' AGL/1559' MSL.

SIoux CITY, IA

SIoux GATEWAY/COLONEL BUD DAY
FIELD (SUX)

TAKEOFF MINIMUMS AND (OBSTACLE)
DEPARTURE PROCEDURES

AMDT 3A 16147 (FAA)

TAKEOFF MINIMUMS: **Rwy 35**, std. w/ min. climb of 250' per NM to 4200, or 1600-3 for climb in visual conditions. DEPARTURE PROCEDURE: **Rwy 31**, climb heading 313° to 2000 before turning east.

VCOA: **Rwy 35**, obtain ATC approval for climb in visual conditions when requesting IFR clearance. Climb in visual conditions to cross Sioux Gateway/Col Bud Day field at or above 2500 MSL before proceeding on course.

TAKEOFF OBSTACLE NOTES: **Rwy 13**, trees beginning 2242' from DER, 920' right of centerline, up to 100' AGL/1162' MSL. **Rwy 17**, sign 41' from DER, 178' left of centerline, 4' AGL/1101' MSL. **Rwy 31**, trees beginning 3018' from DER, 122' left of centerline, up to 82/1171' MSL. Trees beginning 3100' from DER, 431' right of centerline up to 100' AGL/1173' MSL. Trees beginning 3205' from DER, 669' right of centerline, up to 100' AGL/1174' MSL. **Rwy 35**, REILS 10' from DER, 150' left and right of centerline, up to 2' AGL/1101' MSL. Trees beginning 135' from DER, 323' right of centerline, up to 6' AGL/1101' MSL. Trees beginning 473' from DER, 587' right of centerline, up to 72' AGL/1157' MSL. Trees beginning 836' from DER, 495' right of centerline, up to 87' AGL/1172' MSL. Trees beginning 1312' from DER, crossing left to right of centerline, up to 87' AGL/1168' MSL.

SPENCER, IA

SPENCER MUNI (SPW)
TAKEOFF MINIMUMS AND (OBSTACLE)
DEPARTURE PROCEDURES

ORIG 10154 (FAA)

TAKEOFF OBSTACLE NOTES: **Rwy 12**, ground 113' from DER, 308' right of centerline, 0' AGL/1341' MSL. Vehicle on road 531' from DER, 21' right of centerline, 15' AGL/1347' MSL. Trees and antenna on building beginning 2074' from DER, 466' right of centerline, up to 78' AGL/1449' MSL. Trees beginning 3985' from DER, 35' right of centerline, up to 120' AGL/1449' MSL. **Rwy 18**, vehicle on road 562' from DER, 21' right of centerline, 15' AGL/1353' MSL. Trees beginning 600' from DER, 487' right of centerline, up to 120' AGL/1459' MSL.

TAKEOFF MINIMUMS, (OBSTACLE) DEPARTURE PROCEDURES, AND DIVERSE VECTOR AREA (RADAR VECTORS)

17341

TAKEOFF MINIMUMS, (OBSTACLE) DEPARTURE PROCEDURES, AND DIVERSE VECTOR AREA (RADAR VECTORS)

17341

SPRINGFIELD, MO

DOWNTOWN (3DW)

TAKEOFF MINIMUMS AND (OBSTACLE)
DEPARTURE PROCEDURES
ORIG 15344 (FAA)

TAKEOFF MINIMUMS: **Rwy 29**, 500-2 or std. w/min.
climb of 326' per NM to 2000.

DEPARTURE PROCEDURE: **Rwy 11**, climb heading
108° to 4200 before turning left. **Rwy 29**, climb
heading 288° to 2000 before turning left.

TAKEOFF OBSTACLE NOTES: **Rwy 11**, trees and
buildings beginning 129' from DER, left and right of
centerline, up to 80' AGL/1480' MSL. **Rwy 29**, trees
and buildings beginning 236' from DER, left and right
of centerline, up to 80' AGL/1430' MSL. Tower 1.6 NM
from DER, 2322' right of centerline, 498' AGL/1777'
MSL.

SPRINGFIELD-BRANSON NATIONAL (SGF)

TAKEOFF MINIMUMS AND (OBSTACLE)
DEPARTURE PROCEDURES
AMDT 1 90067 (FAA)

TAKEOFF MINIMUMS: **Rwy 32**, 300-1 or std. with a
min. climb of 250' per NM to 1400.

STEELE, MO

STEELE MUNI (M12)

TAKEOFF MINIMUMS AND (OBSTACLE)
DEPARTURE PROCEDURES
ORIG 15120 (FAA)

TAKEOFF OBSTACLE NOTES: **Rwy 18**, multiple poles
beginning 158' from DER, left and right of centerline,
up to 34' AGL/292' MSL. Multiple trees beginning
1837' from DER, 507' left of centerline, up to 100'
AGL/359' MSL. Tree 1842' from DER, 903' right of
centerline, 100' AGL/359' MSL. **Rwy 36**, tree 608'
from DER, 525' right of centerline, 19' AGL/274' MSL.
Vehicles on road beginning 682' from DER, 239' right
of centerline, up to 21' AGL/276' MSL. Multiple trees
beginning 3738' from DER, 1382' left of centerline, up
to 100' AGL/364' MSL.

STOCKTON, MO

STOCKTON MUNI (MO3)

TAKEOFF MINIMUMS AND (OBSTACLE)
DEPARTURE PROCEDURES
ORIG 13066 (FAA)

TAKEOFF OBSTACLE NOTES: **Rwy 1**, tree 1070' from
DER, 339' right of centerline, 75' AGL/1114' MSL. Tree
2400' from DER, 227' right of centerline, 75' AGL/1114'
MSL. **Rwy 19**, tree 645' from DER, 8' right of
centerline, 75' AGL/1105' MSL. Tree 1911' from DER,
120' left of centerline, 75' AGL/1115' MSL.

STORM LAKE, IA

STORM LAKE MUNI (SLB)

TAKEOFF MINIMUMS AND (OBSTACLE)
DEPARTURE PROCEDURES
ORIG 11265 (FAA)

TAKEOFF MINIMUMS: **Rwys 6,24**, NA - Turf.

TAKEOFF OBSTACLE NOTES: **Rwy 13**, trees beginning
1730' from DER, 390' left of centerline, up to 100'
AGL/1567' MSL. **Rwy 17**, fence posts beginning 120'
from DER, 450' left of centerline, up to 11' AGL/1491'
MSL. **Rwy 31**, trees beginning 778' from DER, 547' left
of centerline, up to 100' AGL/1577' MSL. Vehicle on road
beginning 227' from DER, 220' left and right of
centerline, up to 15' AGL/1492' MSL.

SULLIVAN, MO

SULLIVAN RGNL (UUV)

TAKEOFF MINIMUMS AND (OBSTACLE)
DEPARTURE PROCEDURES
ORIG 94090 (FAA)

TAKEOFF MINIMUMS: **Rwy 24**, 300-1 or std. with a min.
climb of 320' per NM to 1200.

TARKIO, MO

GOULD PETERSON MUNI (K57)

TAKEOFF MINIMUMS AND (OBSTACLE)
DEPARTURE PROCEDURES
ORIG 08269 (FAA)

TAKEOFF OBSTACLE NOTES: **Rwy 18**, multiple trees
beginning 1797' from DER, 22' left of centerline, 59'
AGL/968' MSL. Multiple trees, power poles, vehicle on
road and well beginning 94' from DER, 163' right of
centerline, 75' AGL/984' MSL. **Rwy 36**, multiple trees,
power poles beginning 404' from DER, 126' left of
centerline, 31' AGL/990' MSL. Multiple trees, power
poles and hangers beginning 44' from DER, 68' right of
centerline, 48' AGL/997' MSL.

TIPTON, IA

MATHEWS MEMORIAL (8C4)

TAKEOFF MINIMUMS AND (OBSTACLE)
DEPARTURE PROCEDURES
AMDT 1 10098 (FAA)

DEPARTURE PROCEDURE: **Rwy 29**, climb heading
288° to 1900 before proceeding on course.

TAKEOFF OBSTACLE NOTES: **Rwy 11**, tree 1537' from
DER, 668' left of centerline, 100' AGL/949' MSL. Tree
1801' from DER, 803' right of centerline, 100' AGL/929'
MSL. Tree 3796' from DER, 227' left of centerline, 100'
AGL/969' MSL. **Rwy 29**, tree 404' from DER, 576' right
of centerline, 100' AGL/929' MSL. Tree 4068' from DER,
964' left of centerline, 100' AGL/959' MSL.

07 DEC 2017 to 04 JAN 2018

07 DEC 2017 to 04 JAN 2018

TAKEOFF MINIMUMS, (OBSTACLE) DEPARTURE PROCEDURES, AND DIVERSE VECTOR AREA (RADAR VECTORS)

17341

TAKEOFF MINIMUMS, (OBSTACLE) DEPARTURE PROCEDURES, AND DIVERSE VECTOR AREA (RADAR VECTORS)

17341

TRENTON, MO

TRENTON MUNI (TRX)
TAKEOFF MINIMUMS AND (OBSTACLE)
DEPARTURE PROCEDURES
ORIG 90039 (FAA)
TAKEOFF MINIMUMS: **Rwys 18, 36**, 500-2 or std. with
a min. climb of 350' per NM to 1400.
DEPARTURE PROCEDURE: **Rwys 18, 36**, climb
runway heading to 1400 before proceeding on course.

VINTON, IA

VINTON VETERANS MEMORIAL
AIRPARK (VTI)
TAKEOFF MINIMUMS AND (OBSTACLE)
DEPARTURE PROCEDURES
AMDT 1 83230 (FAA)
DEPARTURE PROCEDURE: **All Rwys**, north and east
departures (270° CW 160°) climb on runway heading to
3400 before turning.

WARRENSBURG, MO

SKYHAVEN (RCM)
TAKEOFF MINIMUMS AND (OBSTACLE)
DEPARTURE PROCEDURES
AMDT 2 15120 (FAA)
TAKEOFF OBSTACLE NOTES: **Rwy 1**, trees
beginning 192' from DER, 341' right of centerline, up
to 37' AGL/817' MSL. **Rwy 14**, sign 177' from DER,
273' right of centerline, 30' AGL/815' MSL. **Rwy 19**,
trees beginning 5' from DER, 177' right of centerline,
up to 27' AGL/815' MSL. Bldg, sign, multiple trees and
poles beginning 466' from DER, 188' left of centerline
up to 48' AGL/837' MSL. Transmission lines beginning
1219' from DER, 188' left of centerline, up to 40'
AGL/832' MSL.

WARSAW, MO

WARSAW MUNI (RAW)
TAKEOFF MINIMUMS AND (OBSTACLE)
DEPARTURE PROCEDURES
ORIG 14317 (FAA)
TAKEOFF OBSTACLE NOTES: **Rwy 18**, tree 616' from
DER, 475' left of centerline, 38' AGL/944' MSL. **Rwy 36**,
trees beginning 233' from DER, 284' left of
centerline, up to 100' AGL/1006' MSL. Building 3720'
from DER, 193' right of centerline, 100' AGL/1029'
MSL.

WASHINGTON, IA

WASHINGTON MUNI (AWG)
TAKEOFF MINIMUMS AND (OBSTACLE)
DEPARTURE PROCEDURES
AMDT 2 16091 (FAA)
TAKEOFF MINIMUMS: **Rwy 31**, 400-2½ or std. w/min.
climb of 208' per NM to 1200, or alternatively, with
standard takeoff minimums and a normal 200' per NM
climb gradient, takeoff must occur no later than 1500'
prior to DER.
TAKEOFF OBSTACLE NOTES: **Rwy 13**, trees
beginning 1411' from DER, 280' right of centerline, up
to 58' AGL/807' MSL. **Rwy 18**, terrain 140' from DER,
466' right of centerline, 6' AGL/755' MSL. **Rwy 31**,
tower 1.98 NM from DER, 397' right of centerline, 308'
AGL/1065' MSL. **Rwy 36**, tank 5303' from DER, 285'
left of centerline, 150' AGL/893' MSL.

WASHINGTON, MO

WASHINGTON RGNL (FYG)
TAKEOFF MINIMUMS AND (OBSTACLE)
DEPARTURE PROCEDURES
AMDT 1 09295 (FAA)
TAKEOFF MINIMUMS: **Rwy 33**, 400-2¼ or std. w/ min.
climb of 275' per NM to 1000.
DEPARTURE PROCEDURE: **Rwy 15**, climb heading 153°
to 1100 before turning left.
TAKEOFF OBSTACLE NOTES: **Rwy 15**, numerous trees
beginning 3076' from DER, 618' left of centerline up to
108' AGL/589' MSL. **Rwy 33**, numerous trees beginning
1035' from DER, 171' left of centerline, up to 68'
AGL/552' MSL. Numerous trees beginning 2907' from
DER, 66' right of centerline up to 65' AGL/824' MSL.

WATERLOO, IA

WATERLOO RGNL (ALO)
TAKEOFF MINIMUMS AND (OBSTACLE)
DEPARTURE PROCEDURES
ORIG 06271 (FAA)
TAKEOFF OBSTACLE NOTES: **Rwy 6**, multiple trees
beginning 2087' from DER, 265' right of centerline, up to
71' AGL/944' MSL, tree 2226' from DER, 125' left of
centerline, 69' AGL/932' MSL. **Rwy 24**, tree 2262' from
DER, 473' right of centerline, 55' AGL/925' MSL. **Rwy 30**,
multiple trees beginning 2160' from DER, 938' right of
centerline, up to 95' AGL/995' MSL. **Rwy 36**, multiple
trees beginning 1213' from DER, 157' right of centerline,
up to 54' AGL/1004' MSL.

WAVERLY, IA

WAVERLY MUNI (C25)
TAKEOFF MINIMUMS AND (OBSTACLE)
DEPARTURE PROCEDURES
ORIG 90123 (FAA)
TAKEOFF MINIMUMS: **Rwys 11, 29**, 300-1.

WEBSTER CITY, IA

WEBSTER CITY MUNI (EBS)
TAKEOFF MINIMUMS AND (OBSTACLE)
DEPARTURE PROCEDURES
AMDT 1 14261 (FAA)
TAKEOFF MINIMUMS: **Rwys 5, 23**, NA-Environment.
TAKEOFF OBSTACLE NOTES: **Rwy 14**, bush 22' from
DER, 302' left of centerline, 5' AGL/1125' MSL. Bush
189' from DER, 487' right of centerline, 9' AGL/1129'
MSL. Trees beginning 1838' from DER, 225' left of
centerline, up to 65' AGL/1185' MSL. **Rwy 32**, vehicles
on roadway, 354' from DER, 497' right of centerline, up
to 15' AGL/1119' MSL.

TAKEOFF MINIMUMS, (OBSTACLE) DEPARTURE PROCEDURES, AND DIVERSE VECTOR AREA (RADAR VECTORS)

17341

**TAKEOFF MINIMUMS, (OBSTACLE) DEPARTURE PROCEDURES, AND
DIVERSE VECTOR AREA (RADAR VECTORS)**

17341

WEST PLAINS, MO

WEST PLAINS RGNL (UNO)

TAKEOFF MINIMUMS AND (OBSTACLE)
DEPARTURE PROCEDURES

AMDT1 10322 (FAA)

TAKEOFF MINIMUMS: **Rwy 36**, 300-1¼ or std. w/ a min. climb of 215' per NM to 1500, or alternatively, with std. takeoff minimums and a normal 200' per MN climb gradient, takeoff must occur no later than 1400' prior to DER.

TAKEOFF OBSTACLE NOTES: **Rwy 18**, trees beginning 98' from DER, 65' right of centerline, up to 100' AGL/1339' MSL. Vehicle on road, 199' from DER, 302' left of centerline, 15' AGL/1254' MSL. Trees beginning 978' from DER, 388' left of centerline, up to 77' AGL/1277' MSL.

Rwy 36, trees beginning 374' from DER, 265' left of centerline, up to 100' AGL/1319' MSL. Trees beginning 644' from DER, 631' right of centerline, up to 100' AGL/1319' MSL. Trees beginning 2690' from DER, 601' right of centerline, up to 100' AGL/1339' MSL. Trees beginning 5800' from DER, 1171' left of centerline, up to 100' AGL/1379' MSL.

WINTERSET, IA

WINTERSET MUNI (3Y3)

TAKEOFF MINIMUMS AND (OBSTACLE)
DEPARTURE PROCEDURES

AMDT 3 15008 (FAA)

TAKEOFF OBSTACLE NOTES: **Rwy 14**, trees beginning 132' from DER, left and right of centerline, up to 100' AGL/1121' MSL. **Rwy 32**, vehicles on road beginning 43' from DER, left and right of centerline, up to 15' AGL/1154' MSL. Pole 158' from DER, 190' left of centerline 26' AGL/1139' MSL. Trees beginning 548' from DER, left and right of centerline, up to 100' AGL/1186' MSL. Building 599' from DER, 418' left of centerline, 25' AGL/1140' MSL.

WEST UNION, IA

GEORGE L SCOTT MUNI (3Y2)

TAKEOFF MINIMUMS AND (OBSTACLE)
DEPARTURE PROCEDURES

AMDT 3 16091 (FAA)

TAKEOFF OBSTACLE NOTES: **Rwy 17**, buildings beginning 105' from DER, 322' left of centerline, up to 1207' MSL. Tower 315' from DER, 296' left of centerline, 23' AGL/1212' MSL. Pole 341' from DER, 432' left of centerline, 34' AGL/1221' MSL. Pole and tower beginning 342' from DER, 262' left of centerline, up to 35' AGL/1223' MSL. NAVAID and pole beginning 345' from DER, 266' left of centerline, up to 39' AGL/1227' MSL. Tree 2139' from DER, 1012' left of centerline, 1265' MSL. Tree 2370' from DER, 998' left of centerline, 1273' MSL. Tree 2477' from DER, 908' left of centerline, 1286' MSL. **Rwy 35**, tree 58' from DER, 202' right of centerline, 1236' MSL. T-I tower 842' from DER, 610' left of centerline, 28' AGL/1260' MSL. Pole 961' from DER, 389' right of centerline, 30' AGL/1257' MSL. Pole 1068' from DER, 407' left of centerline, 28' AGL/1266' MSL. Tree 1136' from DER, 573' left of centerline, 1270' MSL.

WHITEMAN AFB (KSZL),

KNOB NOSTER, MO

TAKEOFF MINIMUMS AND (OBSTACLE)
DEPARTURE PROCEDURES

AMDT 3, 15232

TAKEOFF OBSTACLE NOTES: **Rwy 1**, aircraft 17' AGL/886' MSL, 40' inward of DER, 531' left of centerline. **Rwy 19**, tree 95' AGL/945' MSL, 3411' from DER, 1073' right of centerline.

07 DEC 2017 to 04 JAN 2018

07 DEC 2017 to 04 JAN 2018

**TAKEOFF MINIMUMS, (OBSTACLE) DEPARTURE PROCEDURES, AND
DIVERSE VECTOR AREA (RADAR VECTORS)**

17341