

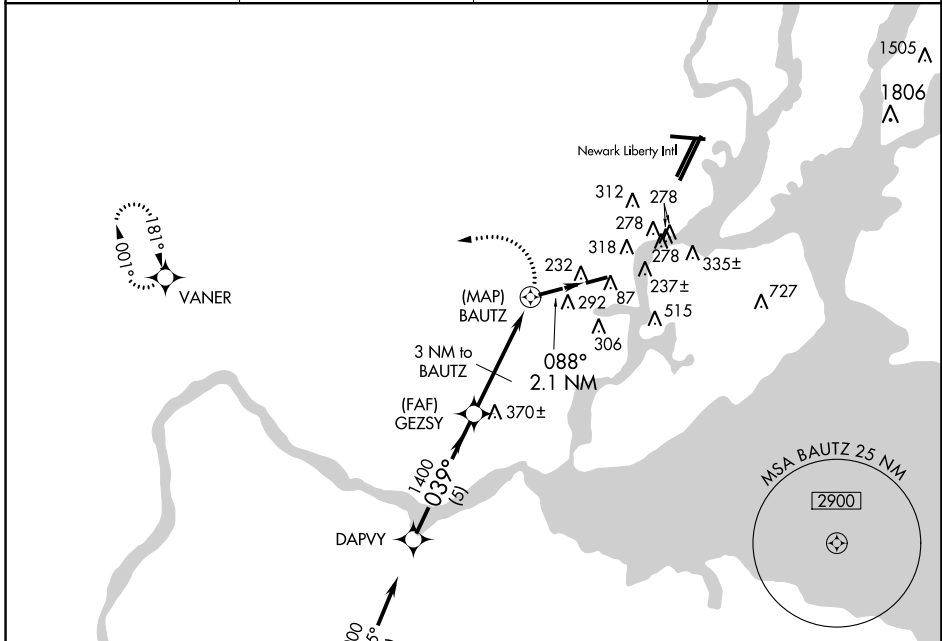
APP CRS 039°	Rwy Idg TDZE Apt Elev	N/A N/A 23
------------------------	-----------------------------	---------------------------------------

GPS-A
LINDEN (LDJ)

▼ When local altimeter setting not received, use Newark Liberty Intl altimeter setting. Helicopter visibility reduction below 1 SM NA.
▲ NA Procedure NA at night.

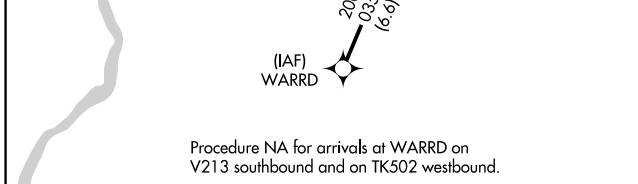
MISSED APPROACH: Climbing left turn to 2000 direct VANER WP and hold.

AWOS-3 124.025	NEW YORK APP CON 135.35 379.9	CLNC DEL 127.25	UNICOM 123.0 (CTAF) ①
--------------------------	---	---------------------------	--



NE-2, 09 NOV 2017 to 07 DEC 2017

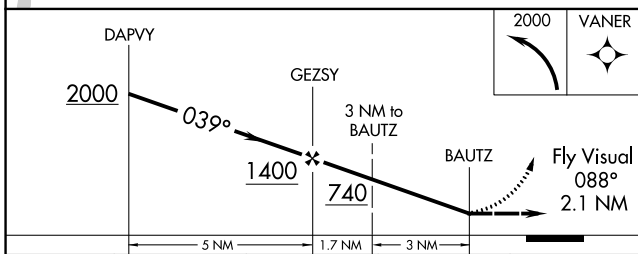
NE-2, 09 NOV 2017 to 07 DEC 2017



ELEV 23

Fly Visual 088° 2.1 NM

MIRL Rwy 9-27 **①**
REIL Rws 9 and 27 **①**



CATEGORY	A	B	C	D
CIRCLING	620-2½	597 (600-2½)		NA
NEWARK ALTIMETER SETTING MINIMUMS				
CIRCLING	640-2½	617 (700-2½)		NA