

BLOND FOUR ARRIVAL (RNAV)
(BLOND, BLOND4) 06FEB14

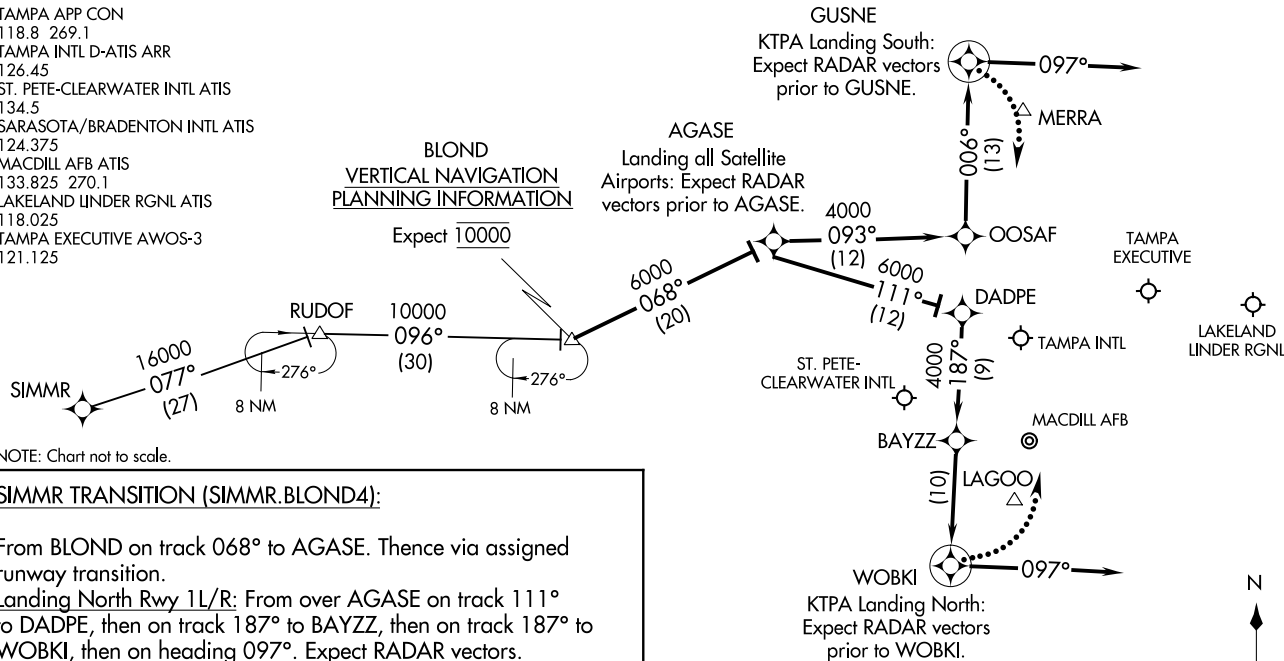
BLOND, BLOND4) 17173
BLOND FOUR ARRIVAL (RNAV)

AL-416 (FAA)

TAMPA, FLORIDA

TAMPA APP CON
118.8 269.1
TAMPA INTL D-ATIS ARR
126.45
ST. PETE-CLEARWATER INTL ATIS
134.5
SARASOTA/BRADENTON INTL ATIS
124.375
MACDILL AFB ATIS
133.825 270.1
LAKELAND UNDER RGNL ATIS
118.025
TAMPA EXECUTIVE AWOS-3
121.125

**BLOND
VERTICAL NAVIGATION
PLANNING INFORMATION**



NOTE: Chart not to scale.

SIMMR TRANSITION (SIMMR.BLOND4):

From BLOND on track 068° to AGASE. Thence via assigned runway transition.
 Landing North Rwy 1L/R: From over AGASE on track 111° to DADPE, then on track 187° to BAYZZ, then on track 187° to WOBKI, then on heading 097°. Expect RADAR vectors.
 Landing South Rwy 19L/R: From over AGASE on track 093° to OOSAF, then on track 006° to GUSNE, then right turn on heading 097°. Expect RADAR vectors.

LOST COMMUNICATIONS:

KTPA Landing South: Continue track to GUSNE, then turn right to intercept the Rwy 19R final approach course, conduct approach.
KTPA Landing North: Continue track to WOBKI, then turn left to intercept the Rwy 1L final approach course, conduct approach.

- NOTE: RADAR required.
- NOTE: RNAV 1.
- NOTE: DME/DME/IRU or GPS required.
- NOTE: Turbojet and Turboprop aircraft only.
- NOTE: Primary landing Rwy 1L/R, 19L/R.
- NOTE: For non-GPS equipped aircraft: GUSNE transition: PIE must be operational; WOBKI transition: SRQ, LAL, ORL, and PIE must be operational.

TAMPA, FLORIDA