

EXECUTIVE ONE DEPARTURE (RNAV)
(EXTVE1.PLFMD) 25AUG11

CHARLESTON, SOUTH CAROLINA
CHARLESTON EXECUTIVE (JZI)

ATIS
124.75
CLINC DEL
119.85
GND CON
121.9 348.6
CTAF
122.8
CHARLESTON DEP CON
120.7 306.925

TAKEOFF MINIMUMS:

- Rwy 4: ATC climb of 500' per NM to 900.
- Rwy 9: ATC climb of 500' per NM to 800.
- Rwy 22: Standard with minimum climb of 245' per NM to 520. ATC climb of 500' per NM to 1300.
- Rwy 27: ATC climb of 500' per NM to 1500.

- NOTE: Transponder code will be issued by Charleston clearance delivery.
- NOTE: If unable to accept climb rate, advise ATC on initial contact.
- NOTE: RNAV 1.
- NOTE: GPS required.



DEPARTURE ROUTE DESCRIPTION

TAKEOFF RWY 4: Climb heading 037° to 520 MSL, then left turn direct RNDAH, cross RNDAH at or above 2000, direct GECHE and then on depicted route to PLFMD, thence. . . .

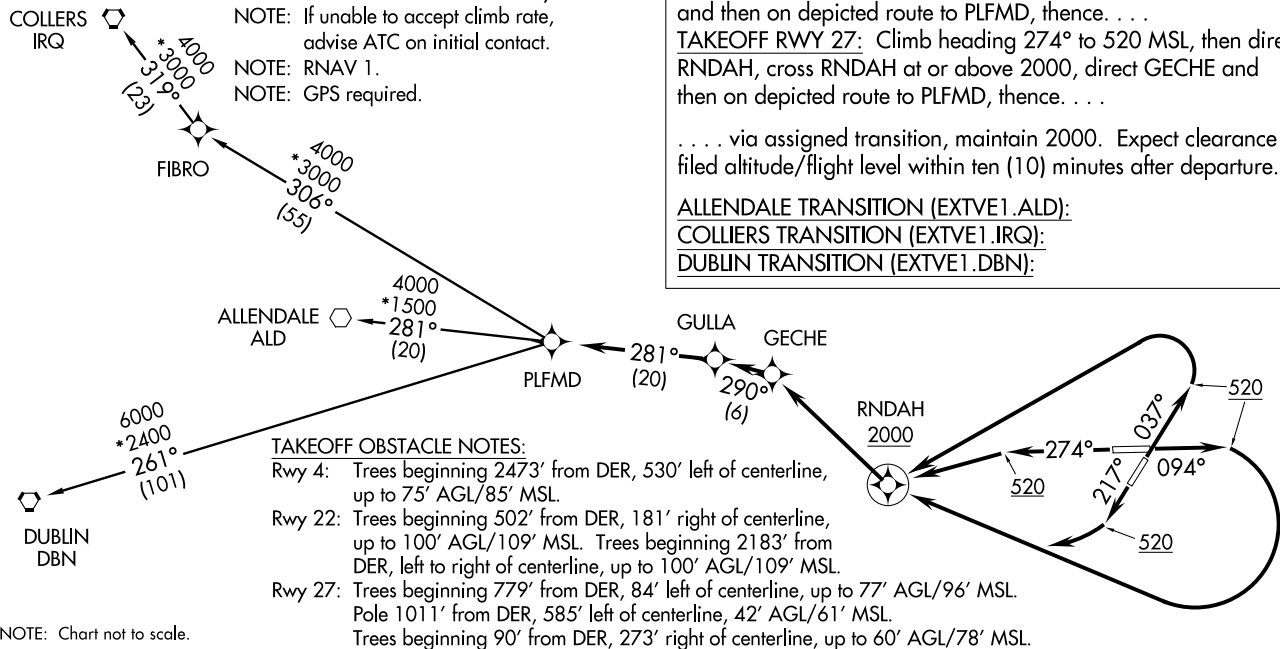
TAKEOFF RWY 9: Climb heading 094° to 520 MSL, then right turn direct RNDAH, cross RNDAH at or above 2000, direct GECHE and then on depicted route to PLFMD, thence. . . .

TAKEOFF RWY 22: Climb heading 217° to 520 MSL, then right turn direct RNDAH, cross RNDAH at or above 2000, direct GECHE and then on depicted route to PLFMD, thence. . . .

TAKEOFF RWY 27: Climb heading 274° to 520 MSL, then direct RNDAH, cross RNDAH at or above 2000, direct GECHE and then on depicted route to PLFMD, thence. . . .

. . . . via assigned transition, maintain 2000. Expect clearance to filed altitude/flight level within ten (10) minutes after departure.

- ALLENDALE TRANSITION (EXTVE1.ALD):
- COLLIERS TRANSITION (EXTVE1.IRQ):
- DUBLIN TRANSITION (EXTVE1.DBN):



TAKEOFF OBSTACLE NOTES:

- Rwy 4: Trees beginning 2473' from DER, 530' left of centerline, up to 75' AGL/85' MSL.
- Rwy 22: Trees beginning 502' from DER, 181' right of centerline, up to 100' AGL/109' MSL. Trees beginning 2183' from DER, left to right of centerline, up to 100' AGL/109' MSL.
- Rwy 27: Trees beginning 779' from DER, 84' left of centerline, up to 77' AGL/96' MSL. Pole 1011' from DER, 585' left of centerline, 42' AGL/61' MSL. Trees beginning 90' from DER, 273' right of centerline, up to 60' AGL/78' MSL.

NOTE: Chart not to scale.

EXECUTIVE ONE DEPARTURE (RNAV)
(EXTVE1.PLFMD) 16315

CHARLESTON EXECUTIVE (JZI)
CHARLESTON, SOUTH CAROLINA

SI-5354 (FAA)

KAWAH ONE DEPARTURE (RNAV)
(KAWA1.LGRHD) 25AUG11

(KAWA1.LGRHD) 16315
KAWAH ONE DEPARTURE (RNAV)

SI-5354 (FAA)

CHARLESTON EXECUTIVE (JZI)
CHARLESTON, SOUTH CAROLINA

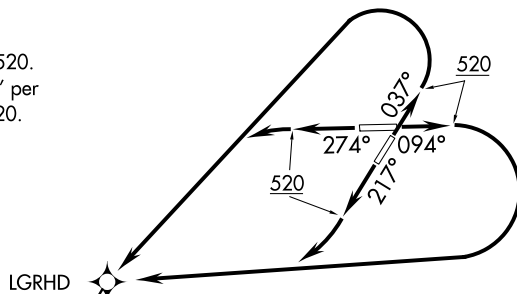
ATIS
124.75
CLNC DEL
119.85
GND CON
121.9 348.6
CTAF
122.8
CHARLESTON DEP CON
120.7 306.925

TAKEOFF MINIMUMS:
Rwys 4, 9, 27: ATC climb of 500' per NM to 520.
Rwy 22: Standard with minimum climb of 245' per
NM to 520. ATC climb of 500' per NM to 520.

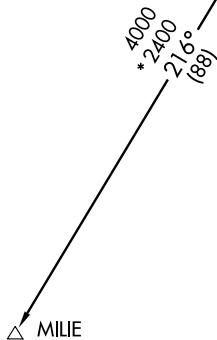
TAKEOFF OBSTACLE NOTES:
Rwy 4: Trees beginning 2473' from DER, 530' left of centerline, up to 75' AGL/85' MSL.
Rwy 22: Trees beginning 502' from DER, 181' right of centerline, up to 100' AGL/109' MSL. Trees beginning 2183' from DER, left to right of centerline, up to 100' AGL/109' MSL.
Rwy 27: Trees beginning 779' from DER, 84' left of centerline, up to 77' AGL/96' MSL. Pole 1011' from DER, 585' left of centerline, 42' AGL/61' MSL. Trees beginning 90' from DER, 273' right of centerline, up to 60' AGL/78' MSL.

NOTE: Transponder code will be issued by Charleston clearance delivery.
NOTE: If unable to accept climb rate, advise ATC on initial contact.
NOTE: GPS required.
NOTE: RNAV 1.

NOTE: Chart not to scale.



LGRHD



DEPARTURE ROUTE DESCRIPTION

TAKEOFF RWY 4: Climb heading 037° to 520 MSL, then left turn direct LGRHD, thence. . . .
TAKEOFF RWY 9: Climb heading 094° to 520 MSL, then right turn direct LGRHD, thence. . . .
TAKEOFF RWY 22: Climb heading 217° to 520 MSL, then right turn direct LGRHD, thence. . . .
TAKEOFF RWY 27: Climb heading 274° to 520 MSL, then left turn direct LGRHD, thence. . . .

. . . . via assigned transition/route, maintain 2000. Expect clearance to filed altitude/flight level within ten (10) minutes after departure.

MILIE TRANSITION (KAWA1.MILIE):

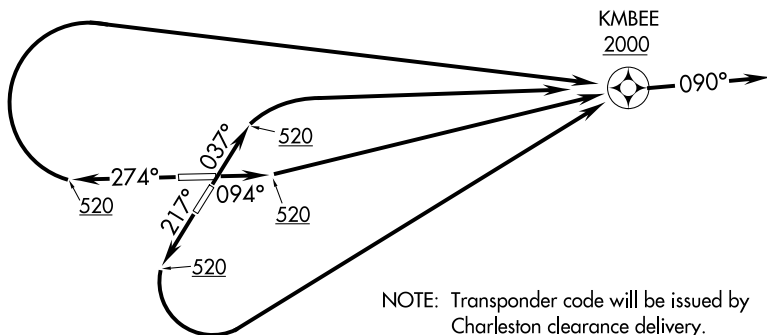
CHARLESTON, SOUTH CAROLINA
CHARLESTON EXECUTIVE (JZI)

KMBEE ONE DEPARTURE (RNAV)

ATIS
124.75
CLNC DEL
119.85
GND CON
121.9 348.6
CTAF
122.8
CHARLESTON DEP CON
120.7 306.925

TAKEOFF OBSTACLE NOTES:

- Rwy 4: Trees beginning 2473' from DER, 530' left of centerline, up to 75' AGL/85' MSL.
- Rwy 22: Trees beginning 502' from DER, 181' right of centerline, up to 100' AGL/109' MSL. Trees beginning 2183' from DER, left to right of centerline, up to 100' AGL/109' MSL.
- Rwy 27: Trees beginning 779' from DER, 84' left of centerline, up to 77' AGL/96' MSL. Pole 1011' from DER, 585' left of centerline, 42' AGL/61' MSL. Trees beginning 90' from DER, 273' right of centerline, up to 60' AGL/78' MSL.



- NOTE: Transponder code will be issued by Charleston clearance delivery.
- NOTE: If unable to accept climb rate or crossing restriction, advise ATC on initial contact.
- NOTE: RNAV 1.
- NOTE: GPS required.
- NOTE: Radar required.

TAKEOFF MINIMUMS:

Rwys 4, 22, 27: ATC climb of 500' per NM to 520.
Rwy 9: ATC climb of 500' per NM to 620.

NOTE: Chart not to scale.

DEPARTURE ROUTE DESCRIPTION

TAKEOFF RWY 4: Climb heading 037° to 520 MSL, then right turn direct KMBEE, cross KMBEE at or above 2000, thence. . . .

TAKEOFF RWY 9: Climb heading 094° to 520 MSL, then direct KMBEE, cross KMBEE at or above 2000, thence. . . .

TAKEOFF RWY 22: Climb heading 217° to 520 MSL, then left turn direct KMBEE, cross KMBEE at or above 2000, thence. . . .

TAKEOFF RWY 27: Climb heading 274° to 520 MSL, then right turn direct KMBEE, cross KMBEE at or above 2000, thence. . . .

. . . . Fly heading 090° or as assigned by ATC, expect radar vectors on course. Maintain 2000. Expect clearance to filed altitude within ten (10) minutes after departure.