


LOC/DME I-JYO 111.75 Chan 54 (Y)	APP CRS 171°	Rwy Idg 5499 TDZE 383 Apt Elev 389
--	------------------------	---

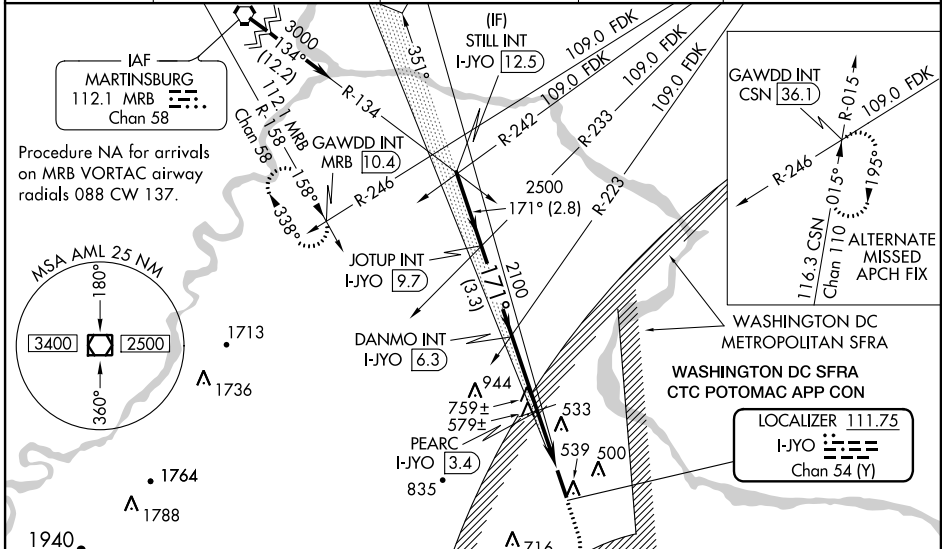
ILS or LOC RWY 17

LEESBURG EXECUTIVE (JYO)

⚠ When VGSI inop, Straight-in/Circling Rwy 17 procedure NA at night.
⚠ Inoperative table does not apply to S-LOC 17 Cats A/C and PEARC Fix minimums S-LOC 17 Cats A/B. For inoperative ODALS, increase PEARC Fix minimums S-LOC 17 Cats C/D visibility to 1½. Visibility reduction by helicopters NA. When local altimeter setting not received, use Washington Dulles Intl altimeter setting; increase all DA 32 feet; increase all MDA 40 feet and PEARC Fix minimums S-LOC 17 Cats C/D visibility ¼ mile and Circling Cats C/D and PEARC Fix minimums Circling Cat D visibility ¼ mile; inoperative table does not apply to S-LOC 17 Cat C and PEARC Fix minimums S-LOC 17 Cats A/B/C.

ODALS

MISSED APPROACH: Climb to 1200 then climbing right turn to 4000 on heading 340° and MRB VORTAC R-158 to GAWDD INT/MRB 10.4 DME and hold, continue climb-in hold to 4000.

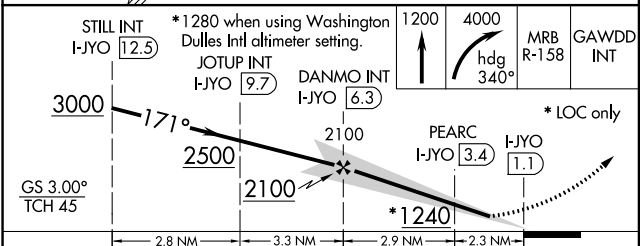
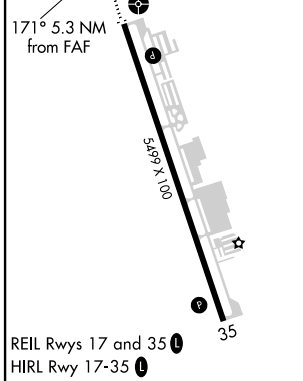
AWOS-3 125.225	POTOMAC APP CON 126.1 338.25	LEESBURG RADIO 122.6	CLNC DEL 118.55	UNICOM 122.975 (CTAF) 0
--------------------------	--	--------------------------------	---------------------------	-----------------------------------



NE-3, 08 JAN 2015 to 05 FEB 2015

NE-3, 08 JAN 2015 to 05 FEB 2015

ELEV 389	TDZE 383
-----------------	-----------------



CATEGORY	A	B	C	D
S-ILS 17	633-1 250 (300-1)			
S-LOC 17	1240-1	857 (900-1)	1240-2½	857 (900-2½)
CIRCLING	1240-1¼	851 (900-1¼)	1240-2½	1240-2¾ 851 (900-2¾)
PEARC FIX MINIMUMS				
S-LOC 17	840-1	457 (500-1)	840-1¼	457 (500-1¼)
CIRCLING	840-1	451 (500-1)	860-1½ 471 (500-1½)	1040-2 651 (700-2)

WAAS CH 60902 W17A	APP CRS 171°	Rwy Idg TDZE Apt Elev	5499 383 389
--	------------------------	-----------------------------	---

RNAV (GPS) RWY 17

LEESBURG EXECUTIVE (JYO)

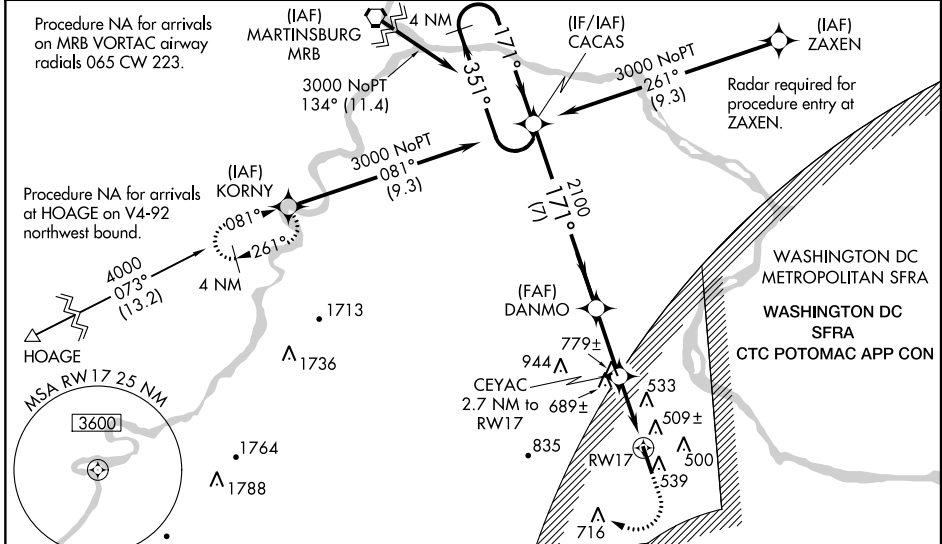
When VGSI inop, Straight-in/Circling Rwy 17 procedure NA at night. DME/DME RNP-0.3 NA. Visibility reduction by helicopters NA. For uncompensated Baro-VNAV systems, LNAV/VNAV NA below -15°C (5°F) or above 41°C (105°F). Inoperative table does not apply to LNAV Cats A/B.

▼ For inoperative ODALS, increase LNAV/VNAV all Cats visibility to 1½ and LNAV Cats C/D visibility to 1¾. When local altimeter setting not received, use Washington Dulles Intl altimeter setting and increase all DA 32 feet and all MDA 40 feet; increase LNAV Cat D visibility ½ mile and Circling Cat D visibility ¼ mile. For inoperative ODALS when using Washington Dulles Intl altimeter setting: increase LNAV/VNAV all Cats visibility to 1½ and LNAV Cats C/D visibility to 1¾. Baro-VNAV NA when using Washington Dulles Intl altimeter setting.

ODALS

MISSED APPROACH: Climb to 1100 then climbing right turn to 4000 direct KORNÝ and hold.

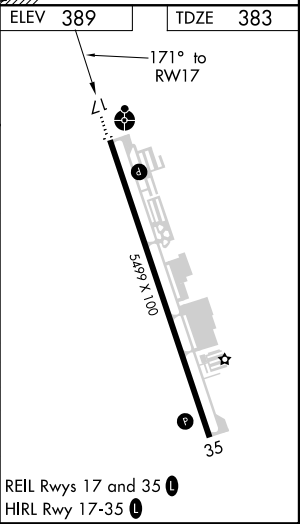
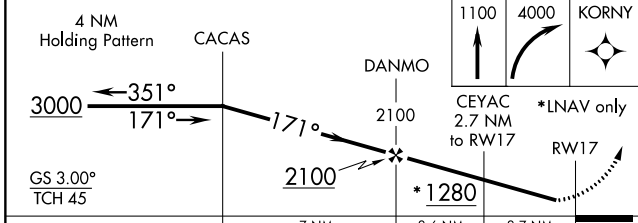
AWOS-3 125.225	POTOMAC APP CON 126.1 338.25	LEESBURG RADIO 122.6	CLNC DEL 118.55	UNICOM 122.975 (CTAF)
--------------------------	--	--------------------------------	---------------------------	---------------------------------



NE-3, 08 JAN 2015 to 05 FEB 2015

NE-3, 08 JAN 2015 to 05 FEB 2015

ELEV 389	TDZE 383
----------	----------



CATEGORY	A	B	C	D
LPV DA		633-1	250 (300-1)	
LNAV/VNAV DA		725-1	342 (400-1)	
LNAV MDA	940-1	557 (600-1)	940-1½	557 (600-1½)
CIRCLING	940-1	551 (600-1)	940-1½	551 (600-1½)
			1040-2	651 (700-2)