

WAAS CH <b>62920</b> <b>W18A</b>	APP CRS <b>178°</b>	Rwy ldg TDZE Apt Elev	<b>6500</b> <b>727</b> <b>727</b>
----------------------------------------	------------------------	-----------------------------	-----------------------------------------

# RNAV (GPS) RWY 18

MID-WAY RGNL (JWY)

**⚠** Baro-VNAV NA when using Dallas Love Field altimeter setting. For uncompensated Baro-VNAV systems, LNAV/VNAV NA below -1.6°C (4°F) or above 39°C (102°F).  
**⚠** DME/DME RNP-0.3 NA. VDP NA with Dallas Love Field altimeter setting. When local altimeter setting not received, use Dallas Love Field altimeter setting and increase all DA 88 feet and all MDA 100 feet, increase LPV and LNAV/VNAV visibility ¼ mile all Cats, LNAV Cats C and D ⅜ mile, and Circling Cat D visibility ¼ mile.

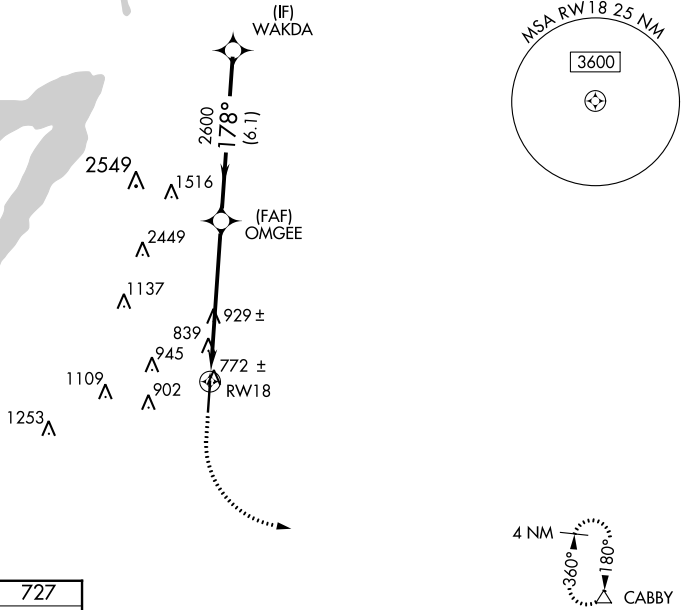
**MISSED APPROACH:** Climb to 1300 then climbing left turn to 3000 direct CABBY and hold.

AWOS-3  
**119.575**

REGIONAL APP CON  
**125.2 343.65**

UNICOM  
**122.975 (CTAF)**

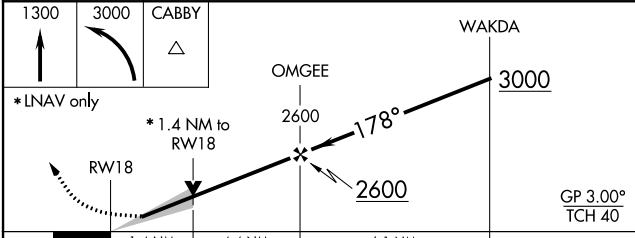
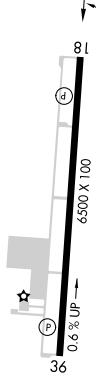
## RADAR REQUIRED



SC-2, 12 OCT 2017 to 09 NOV 2017

SC-2, 12 OCT 2017 to 09 NOV 2017

ELEV <b>727</b>	TDZE <b>727</b>
-----------------	-----------------



CATEGORY	A	B	C	D
LPV DA		927-¾	200 (200-¾)	
LNAV/VNAV DA		977-⅞	250 (300-⅞)	
LNAV MDA	1220-1	493 (500-1)	1220-1⅜	493 (500-1⅜)
CIRCLING	1220-1	493 (500-1)	1220-1½ 493 (500-1½)	1300-2 573 (600-1)

MIRL Rwy 18-36

WAAS CH <b>62814</b> <b>W36A</b>	APP CRS <b>358°</b>	Rwy ldg TDZE Apt Elev	<b>6500</b> <b>703</b> <b>726</b>
----------------------------------------	------------------------	-----------------------------	-----------------------------------------

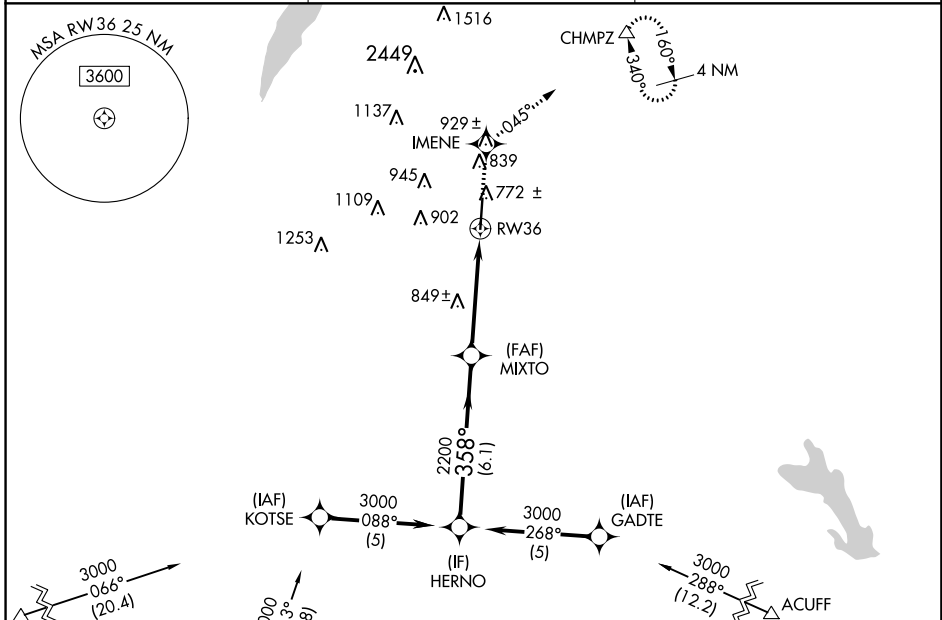
# RNAV (GPS) RWY 36

MID-WAY RGNL (JWY)

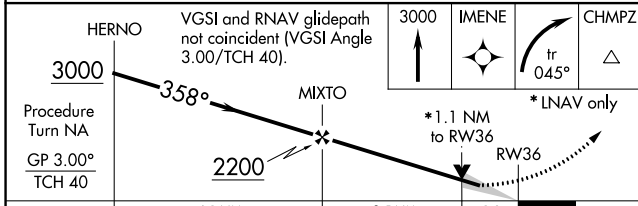
**⚠** For uncompensated Baro-VNAV systems, LNAV/VNAV NA below -1.6°C (4°F) or above 47°C (117°F). DME/DME RNP-0.3 NA. When local altimeter setting not received, use Dallas Love Field altimeter setting and increase all DA 88 feet and all MDA 100 feet, increase LPV all Cats visibility ¼ mile, LNAV/VNAV all Cats visibility ½ mile, LNAV Cats C and D visibility ¼ mile, Circling Cat D visibility ¼ mile. Baro-VNAV and VDP NA when using Dallas Love Field altimeter setting.

**MISSED APPROACH:** Climb to 3000 direct IMENE and right turn via track 045° to CHMPZ and hold, continue climb-in-hold to 3000.

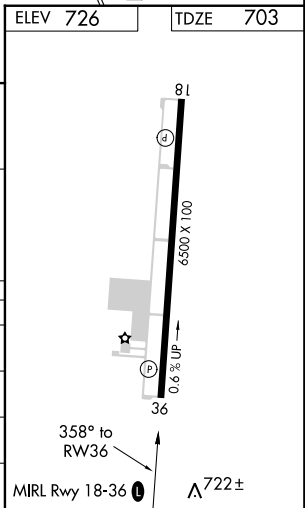
AWOS-3 <b>119.575</b>	REGIONAL APP CON <b>125.2 343.65</b>	UNICOM <b>122.975 (CTAF) 0</b>
--------------------------	-----------------------------------------	-----------------------------------



ELEV 726	TDZE 703
----------	----------



CATEGORY	A	B	C	D
LPV DA		953-1	250 (300-1)	
LNAV/VNAV DA		992-1	289 (300-1)	
LNAV MDA	1100-1	397 (400-1)		1100-1¼ 397 (400-1¼)
CIRCLING	1140-1 414 (500-1)	1180-1 454 (500-1)	1180-1½ 454 (500-1½)	1300-2 574 (600-1)



SC-2, 12 OCT 2017 to 09 NOV 2017

SC-2, 12 OCT 2017 to 09 NOV 2017