

LOC/DME I-JKA <b>110.7</b> Chan <b>44</b>	APP CRS <b>270°</b>	Rwy Idg TDZE Apt Elev	<b>6500</b> <b>17</b> <b>17</b>
---	------------------------	-----------------------------	---------------------------------------

# ILS or LOC RWY 27

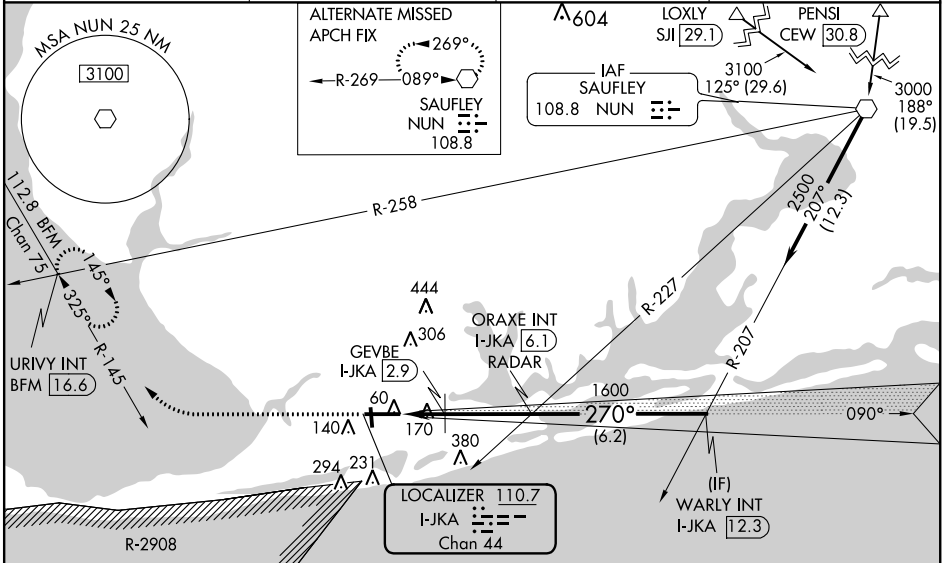
GULF SHORES/JACK EDWARDS (JKA)

**⚠** Circling to Rwy 35 NA at night. VDP NA with Pensacola Intl, FL altimeter setting. When local altimeter setting not received, use Pensacola Intl, FL altimeter setting and increase all DA/MDA 80 feet; increase S-LOC 27 Cats C and D visibility to 1½ and increase GEVBE Fix minimums Cats C and D visibility to 1. For inoperative MALSRS, increase GEVBE Fix minimums Cats C and D visibility to 1½. For inoperative MALSRS, when using Pensacola Intl, FL altimeter setting, increase S-ILS 27 all Cats visibility to ¾, S-LOC 27 Cats C and D and Circling Cat C visibility to 1¾ and GEVBE Fix minimums S-LOC 27 Cats C and D visibility to 1¾. GEVBE Fix minimums DME required.

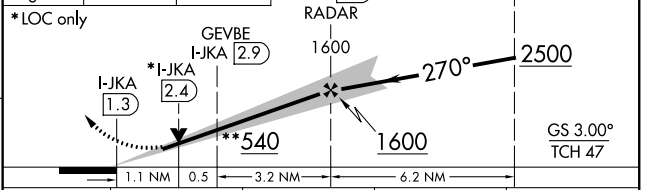
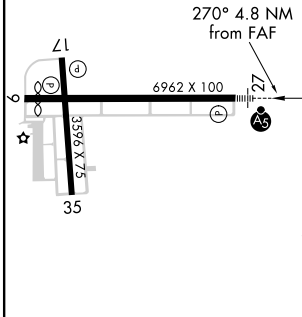
**MALSRS**  
**A5**

**MISSED APPROACH:**  
 Climb to 2000 on heading 270° and BFM VORTAC R-145 to URIVY INT/BFM 16.6 DME and hold.

AWOS-3 <b>134.525</b>	PENSACOLA APP CON <b>120.65 270.8</b>	CLNC DEL <b>124.55</b>	UNICOM <b>122.7 (CTAF) 0</b>
--------------------------	--	---------------------------	---------------------------------



ELEV 17	<b>D</b>	TDZE 17	2000	BFM R-145	URIVY INT	**620 When using Pensacola Intl, FL altimeter setting.	WARLY INT I-JKA 12.3
---------	----------	---------	------	-----------	-----------	--	----------------------



MIRL Rwy 17-35 HIRL Rwy 9-27 <b>0</b>				
FAF to MAP 4.8 NM				
Knots	60	90	120	150 180
Min:Sec	4:48	3:12	2:24	1:55 1:36
CATEGORY	A	B	C	D
S-ILS 27	217-½ 200 (200-½)			
S-LOC 27	540-½	523 (600-½)	540-1	523 (600-1)
CIRCLING	540-1	523 (600-1)	540-1½	580-2 563 (600-2)
GEVBE FIX MINIMUMS				
S-LOC 27	420-½	403 (500-½)	420-¾	403 (500-¾)
CIRCLING	480-1	463 (500-1)	480-1½	580-2 563 (600-2)

SE-4, 12 OCT 2017 to 09 NOV 2017

SE-4, 12 OCT 2017 to 09 NOV 2017

WAAS CH <b>99503</b> <b>W27A</b>	APP CRS <b>270°</b>	Rwy Idg TDZE Apt Elev	<b>6500</b> <b>17</b> <b>17</b>
--	------------------------	-----------------------------	---------------------------------------

# RNAV (GPS) RWY 27

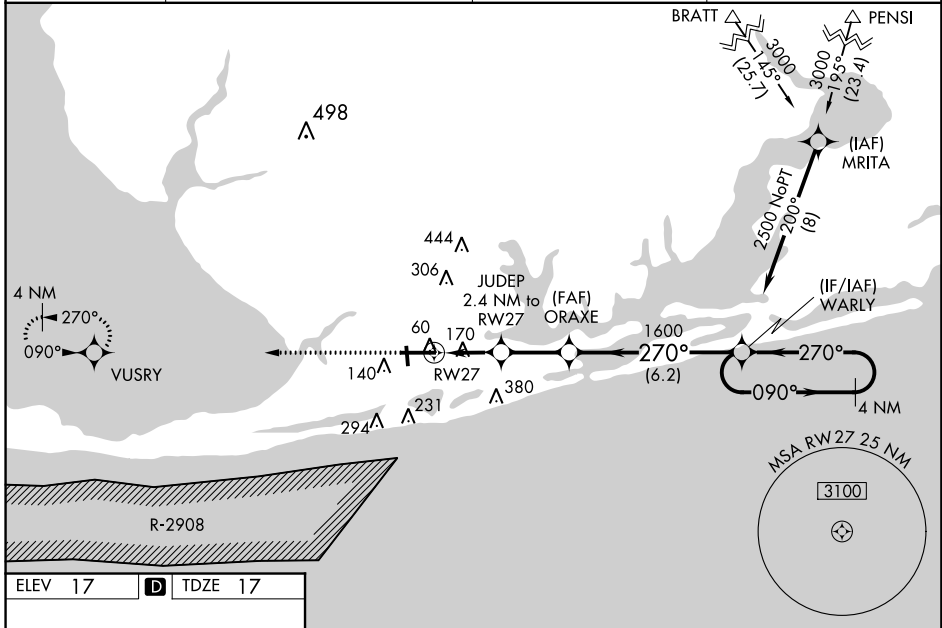
GULF SHORES/JACK EDWARDS (JKA)

**⚠** Circling to Rwy 35 NA at night. DME/DME RNP-0.3 NA. When local altimeter setting not received, use Pensacola Intl, FL altimeter setting and increase all DA/MDA 80 feet, LNAV/VNAV all Cats visibility to 1 $\frac{1}{8}$  and LNAV Cats C and D visibility to 1. For uncompensated Baro-VNAV systems, LNAV/VNAV NA below -15°C (5°F) or above 43°C (109°F). VDP NA with Pensacola Intl, FL altimeter setting. For inoperative MALSR, increase LNAV Cats C and D visibility to 1 $\frac{1}{8}$ . For inoperative MALSR, when using Pensacola Intl, FL altimeter setting, increase LPV all Cats visibility to  $\frac{7}{8}$  and LNAV Cats C and D visibility to 1 $\frac{1}{8}$ .



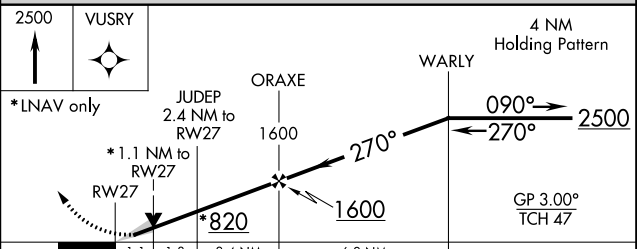
**MISSED APPROACH:**  
Climb to 2500 direct VUSRY and hold.

AWOS-3 <b>134.525</b>	PENSACOLA APP CON <b>120.65 270.8</b>	CLNC DEL <b>124.55</b>	UNICOM <b>122.7 (CTAF) 0</b>
--------------------------	--	---------------------------	---------------------------------



ELEV 17 **D** TDZE 17

MIRL Rwy 17-35  
HIRL Rwy 9-27 **0**



CATEGORY	A	B	C	D
LPV DA	217- $\frac{1}{2}$		200 (200- $\frac{1}{2}$ )	
LNAV/VNAV DA	481-1 $\frac{1}{8}$		464 (500-1 $\frac{1}{8}$ )	
LNAV MDA	420- $\frac{1}{2}$ 403 (500- $\frac{1}{2}$ )		420- $\frac{3}{4}$ 403 (500- $\frac{3}{4}$ )	
CIRCLING	480-1 463 (500-1)		480-1 $\frac{1}{2}$ 580-2 463 (500-1 $\frac{1}{2}$ ) 563 (600-2)	

SE-4, 12 OCT 2017 to 09 NOV 2017

SE-4, 12 OCT 2017 to 09 NOV 2017

WAAS CH <b>86503</b> <b>W09A</b>	APP CRS <b>090°</b>	Rwy Idg TDZE Apt Elev	<b>6500</b> <b>16</b> <b>17</b>
--	------------------------	-----------------------------	---------------------------------------

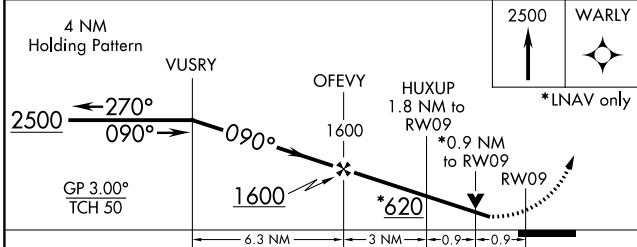
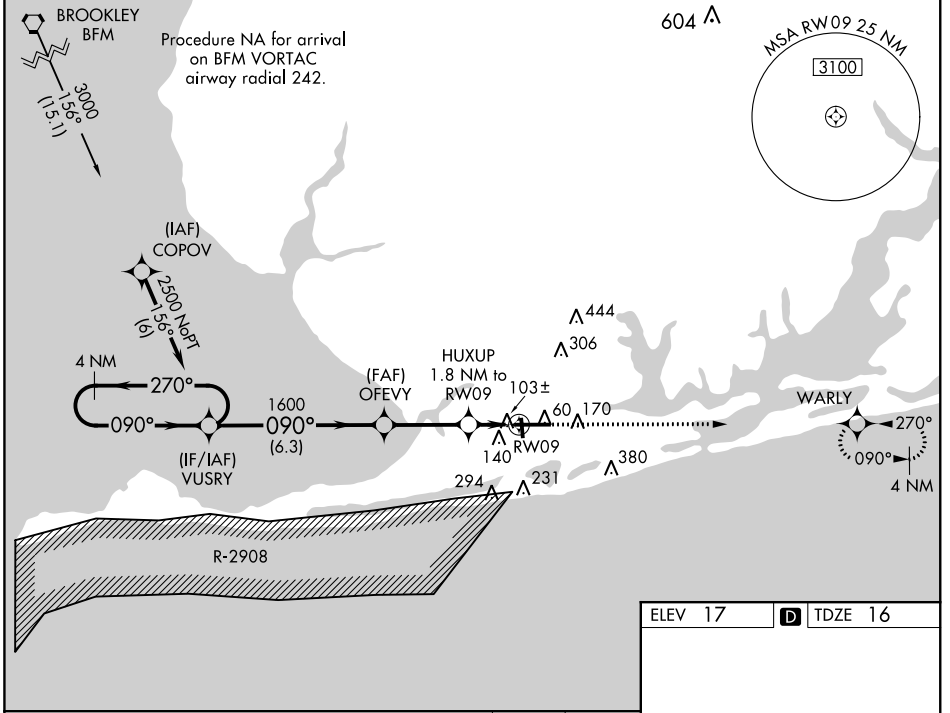
# RNAV (GPS) RWY 9

GULF SHORES/ JACK EDWARDS (JKA)

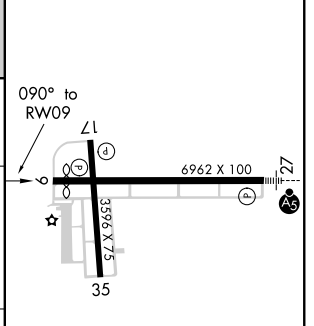
**▼** Circling to Rwy 35 NA at night. Baro-VNAV NA when using Pensacola Intl, FL altimeter setting.  
**▲** For uncompensated Baro-VNAV systems, LNAV/VNAV NA below -15°C (5°F) or above 43°C (109°F).  
 DME/DME RNP-0.3 NA. Helicopter visibility reduction below 3/4 SM NA. VDP NA with Pensacola Intl, FL altimeter setting. When local altimeter setting not received, use Pensacola Intl, FL altimeter setting and increase all DA/MDA 80 feet, increase LPV all Cats visibility to 1/4, LNAV/VNAV all Cats visibility to 1/2 and LNAV Cats C and D visibility to 1/4.

**MISSED APPROACH:** Climb to 2500 direct WARLY and hold.

AWOS-3 <b>134.525</b>	PENSACOLA APP CON <b>120.65 270.8</b>	CLNC DEL <b>124.55</b>	UNICOM <b>122.7 (CTAF) 0</b>
--------------------------	--	---------------------------	---------------------------------



ELEV 17	<b>D</b> TDZE 16
---------	------------------



CATEGORY	A	B	C	D
LPV DA		310-1	294 (300-1)	
LNAV/VNAV DA		266-3/4	250 (300-3/4)	
LNAV MDA		360-1	344 (400-1)	
CIRCLING	480-1	463 (500-1)	480-1/2 463 (500-1/2)	580-2 563 (600-2)

MIRL Rwy 17-35  
 HIRL Rwy 9-27 **0**

SE-4, 12 OCT 2017 to 09 NOV 2017

SE-4, 12 OCT 2017 to 09 NOV 2017