

WAAS CH <b>72912</b> <b>W24A</b>	APP CRS <b>246°</b>	Rwy Idg TDZE Apt Elev	<b>3801</b> <b>635</b> <b>635</b>
--	------------------------	-----------------------------	---

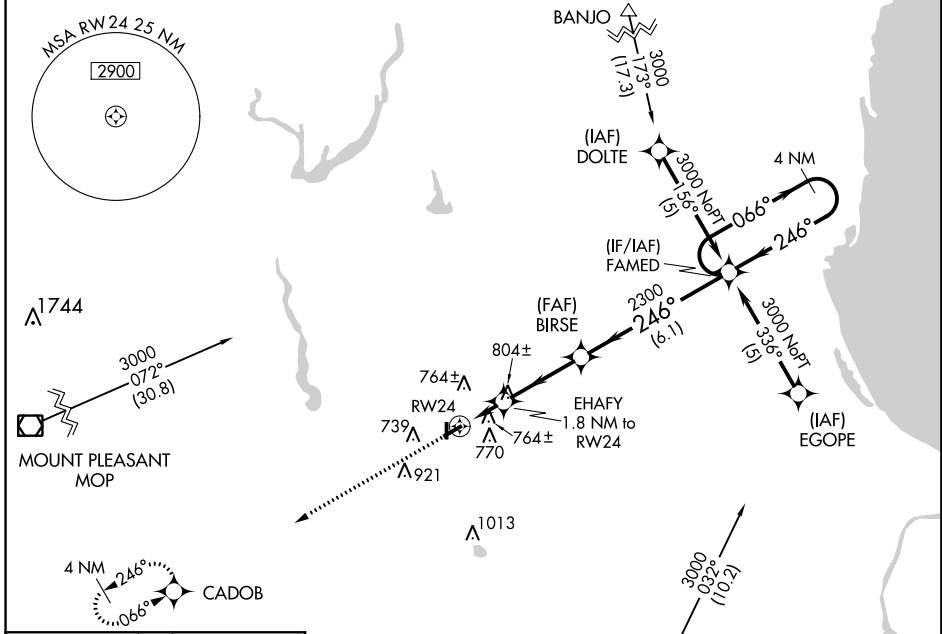
# RNAV (GPS) RWY 24

JACK BARSTOW (IKW)

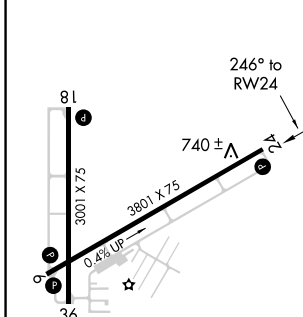
**⚠** Baro-VNAV NA when using MBS Intl altimeter setting. For uncompensated Baro-VNAV systems, LNAV/VNAV NA below -16°C (4°F) or above 54°C (130°F). DME/DME RNP-0.3 NA. Rwy 24 helicopter visibility reduction below ¾ SM RW. When local altimeter setting not received, use MBS Intl altimeter setting and increase all DA 31 feet and all MDA 40 feet and all LPV visibility ¼ mile. Circling Rwy 18, 36 NA at night.

**MISSED APPROACH:**  
Climb to 3000 direct CADOB and hold.

AWOS-3 <b>119.525</b>	SAGINAW APP CON ★ <b>126.45 235.625</b>	UNICOM <b>122.8 (CTAF) ①</b>
--------------------------	--	---------------------------------

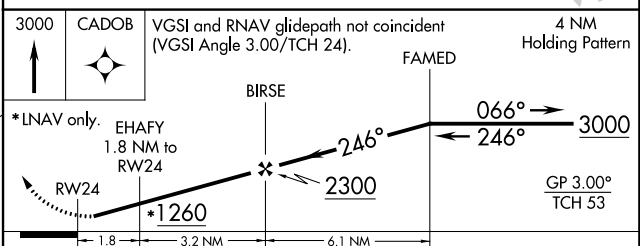


ELEV <b>635</b>	TDZE <b>635</b>
-----------------	-----------------



REIL Rwy 6, 18, 24 and 36 ①  
MIRL Rwy 6-24 and 18-36 ①

Procedure NA for arrivals at MBS VOR/DME via V45 southbound.



CATEGORY	A	B	C	D
LPV DA	1021-1¼ 386 (400-1¼)			NA
LNAV/VNAV DA	1068-1½ 433 (500-1½)			NA
LNAV MDA	1060-1	425 (500-1)	1060-1¼ 425 (500-1¼)	NA
CIRCLING	1120-1	485 (500-1)	1120-1½ 485 (500-1½)	NA

EC-1, 12 OCT 2017 to 09 NOV 2017

EC-1, 12 OCT 2017 to 09 NOV 2017

APP CRS	Rwy Idg	<b>3801</b>
<b>066°</b>	TDZE	<b>628</b>
	Apt Elev	<b>635</b>

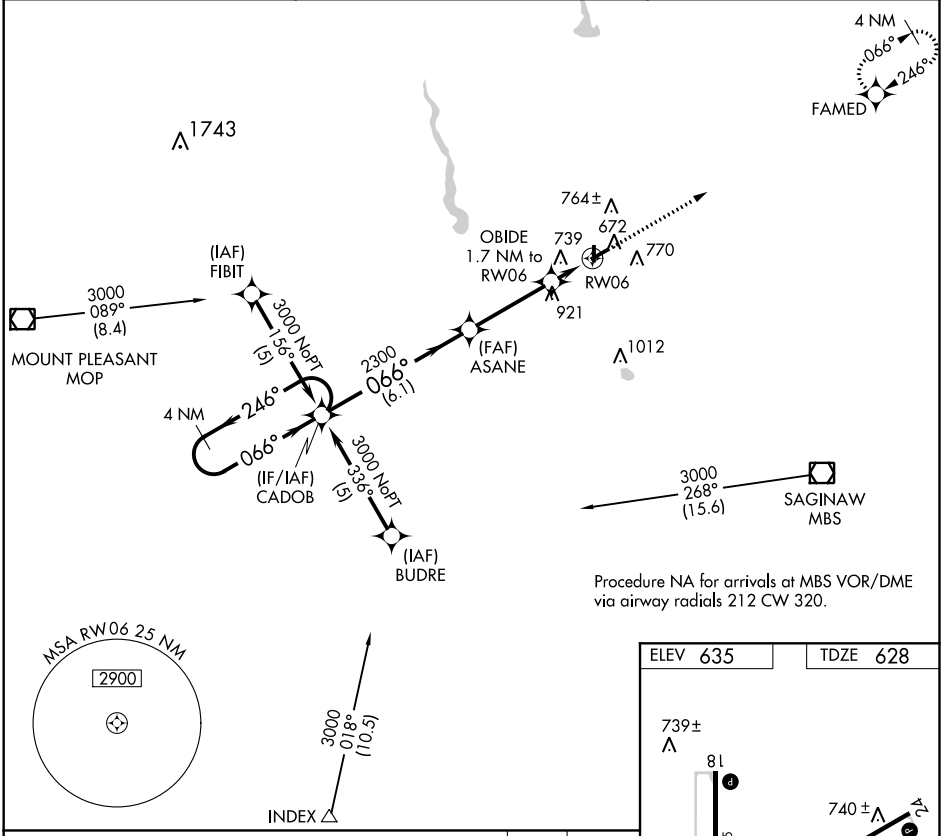
# RNAV (GPS) RWY 6

JACK BARSTOW (IKW)

**▽** DME/DME RNP-0.3 NA. Rwy 24 helicopter visibility reduction below ¼ SM NA.  
**▲** When local altimeter setting not received, use MBS Intl altimeter setting and increase all MDA 40 feet and LNAV Cat C visibility ¼ mile. Circling Rwy 18, 36 NA at night.

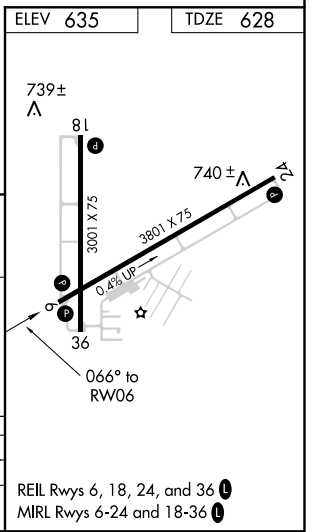
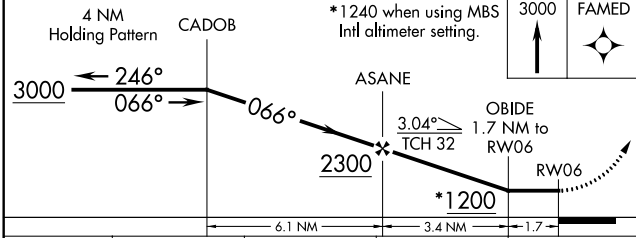
MISSED APPROACH: Climb to 3000 direct FAMED and hold.

AWOS-3 <b>119.525</b>	SAGINAW APP CON * <b>126.45 235.625</b>	UNICOM <b>122.8 (CTAF) 0</b>
--------------------------	--	---------------------------------



EC-1, 12 OCT 2017 to 09 NOV 2017

EC-1, 12 OCT 2017 to 09 NOV 2017



CATEGORY	A	B	C	D
LNAV MDA	1000-1	372 (400-1)		NA
CIRCLING	1120-1	485 (500-1)	1120-1½ 485 (500-1½)	NA

REIL Rwy 6, 18, 24, and 36 **0**  
 MIRL Rwy 6-24 and 18-36 **0**

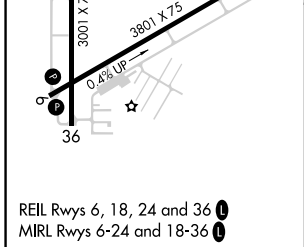
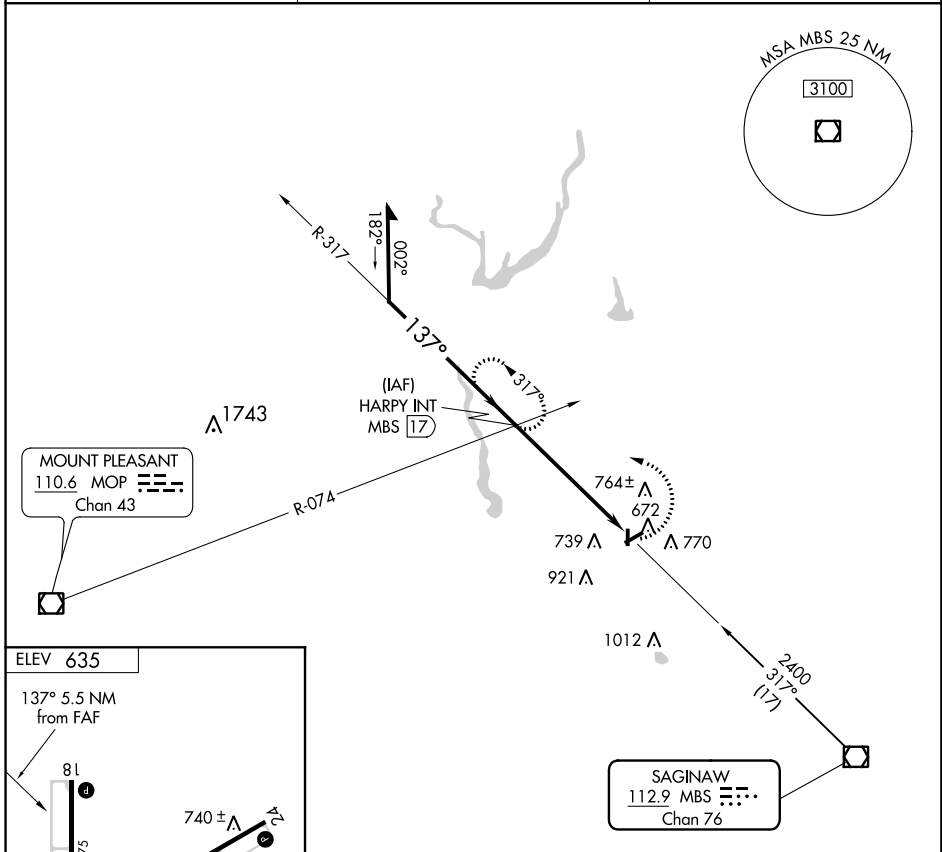
VOR/DME MBS <b>112.9</b> Chan <b>76</b>	APP CRS <b>137°</b>	Rwy Idg TDZE Apt Elev <b>635</b>	<b>N/A</b> <b>N/A</b>
---	------------------------	--	--------------------------

**VOR-A**  
JACK BARSTOW (IKW)

**⚠** When local altimeter setting not received, use MBS Intl altimeter setting and increase all MDA 40 feet. Circling Rwy 18, 36 NA at night.  
**⚠** Rwy 18, 36 helicopter visibility reduction below 1 SM NA.

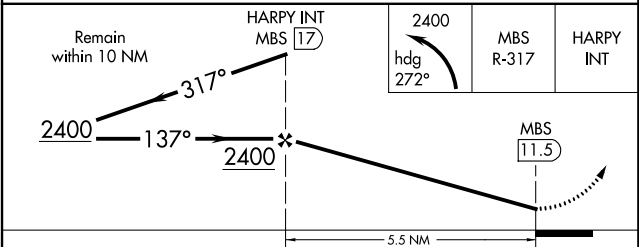
MISSED APPROACH: Climbing left turn to 2400 via heading 272° and MBS VOR/DME R-317 to HARRY INT/17 DME and hold.

AWOS-3 <b>119.525</b>	SAGINAW APP CON ★ <b>126.45 235.625</b>	UNICOM <b>122.8 (CTAF)</b> <b>📻</b>
--------------------------	--	--



REIL Rws 6, 18, 24 and 36 **📻**  
MIRL Rws 6-24 and 18-36 **📻**

FAF to MAP 5.5 NM					
Knots	60	90	120	150	180
Min:Sec	5:30	3:40	2:45	2:12	1:50



CATEGORY	A	B	C	D
CIRCLING	1140-1	505 (600-1)	1140-1½ 505 (600-1½)	NA

EC-1, 12 OCT 2017 to 09 NOV 2017

EC-1, 12 OCT 2017 to 09 NOV 2017