

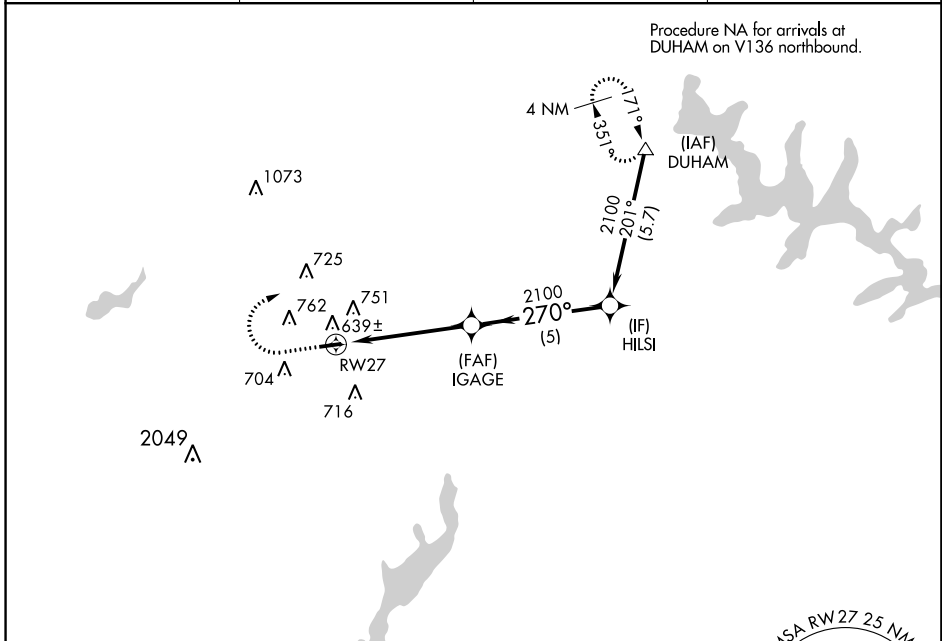
APP CRS <b>270°</b>	Rwy Idg <b>3275</b>
	THRE <b>492</b>
	Apt Elev <b>512</b>

# RNAV (GPS) RWY 27

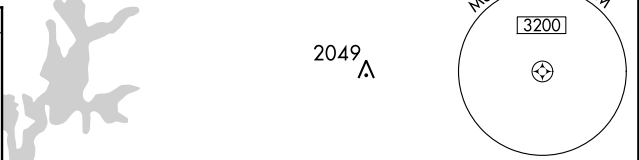
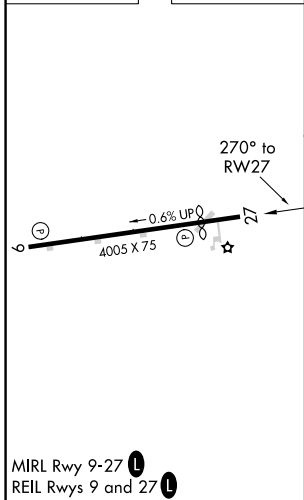
HORACE WILLIAMS (IGX)

**▼** DME/DME RNP-0.3 NA. Helicopter visibility reduction below 1 SM NA. Procedure NA at night. MISSED APPROACH: Climb to 1300 then climbing right turn to 2200 direct DUHAM and hold.

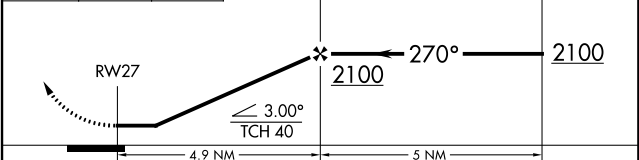
ASOS <b>134.575</b>	RALEIGH APP CON <b>132.35 256.9</b>	CLNC DEL <b>126.5</b>	UNICOM <b>123.0 (CTAF)</b>
------------------------	----------------------------------------	--------------------------	-------------------------------



ELEV 512	THRE 492
----------	----------



1300 2200 DUHAM VGSI and descent angles not coincident (VGSI Angle 4.00/TCH 23).



CATEGORY	A	B	C	D
LNAV MDA	920-1	428 (500-1)	920-1¼	428 (500-1¼)
CIRCLING	1100-1 588 (600-1)	1120-1 608 (700-1)	1120-1¾ 608 (700-1¾)	1120-2 608 (700-2)

SE-2: 27 APR 2017 to 25 MAY 2017

SE-2: 27 APR 2017 to 25 MAY 2017

APP CRS	Rwy Idg	<b>4005</b>
<b>090°</b>	THRE	<b>512</b>
	Apt Elev	<b>512</b>

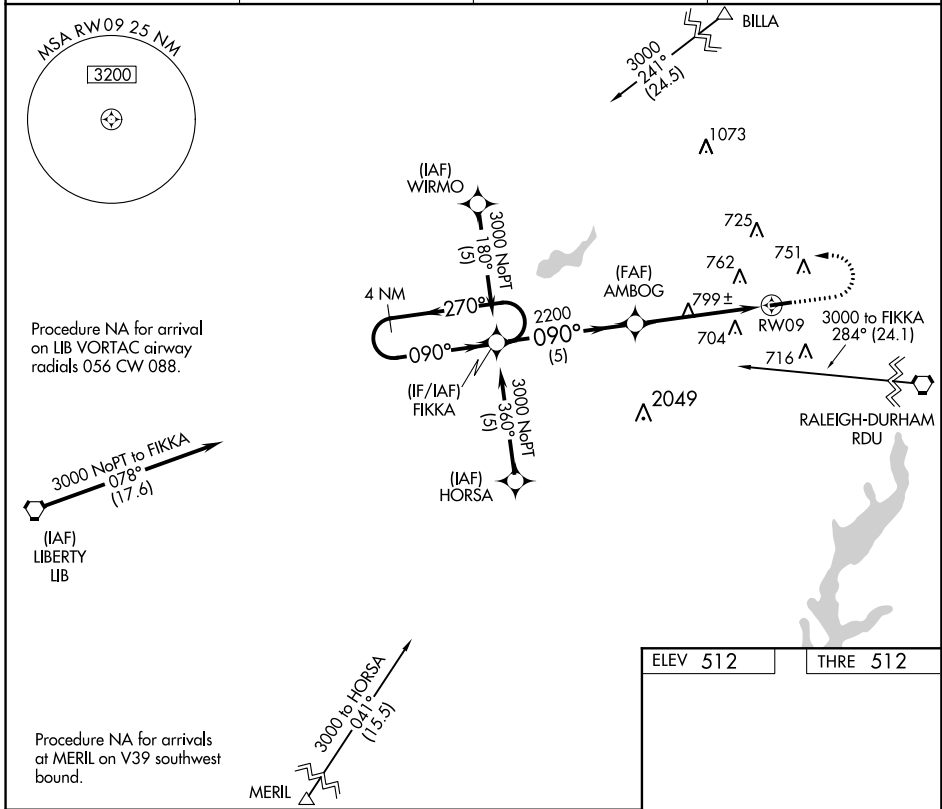
# RNAV (GPS) RWY 9

HORACE WILLIAMS (IGX)

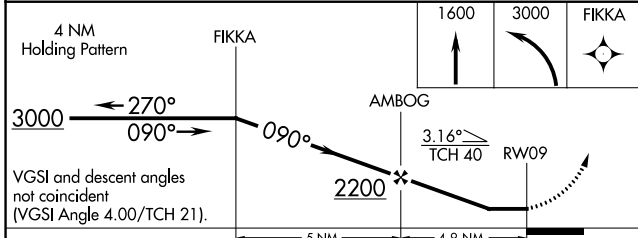
**▼** DME/DME RNP-0.3 NA. Helicopter visibility reduction below 1 SM NA. Procedure NA at night.

MISSED APPROACH: Climb to 1600 then climbing left turn to 3000 direct FIKKA and hold.

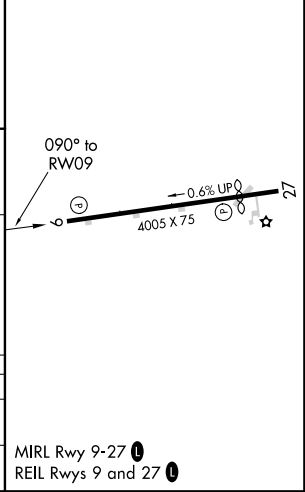
ASOS <b>134.575</b>	RALEIGH APP CON <b>132.35 256.9</b>	CLNC DEL <b>126.5</b>	UNICOM <b>123.0 (CTAF) 0</b>
------------------------	----------------------------------------	--------------------------	---------------------------------



ELEV 512	THRE 512
----------	----------



CATEGORY	A	B	C	D
LNVA MDA	1060-1	548 (600-1)	1060-1½	548 (600-1½)
CIRCLING	1100-1 588 (600-1)	1120-1 608 (700-1)	1120-1½ 608 (700-1½)	1120-2 608 (700-2)



SE-2: 27 APR 2017 to 25 MAY 2017

SE-2: 27 APR 2017 to 25 MAY 2017

VORTAC RDU <b>117.2</b> Chan <b>119</b>	APP CRS <b>290°</b>	Rwy Idg THRE <b>492</b> Apt Elev <b>512</b>	<b>3275</b>
-----------------------------------------------	------------------------	---------------------------------------------------	-------------

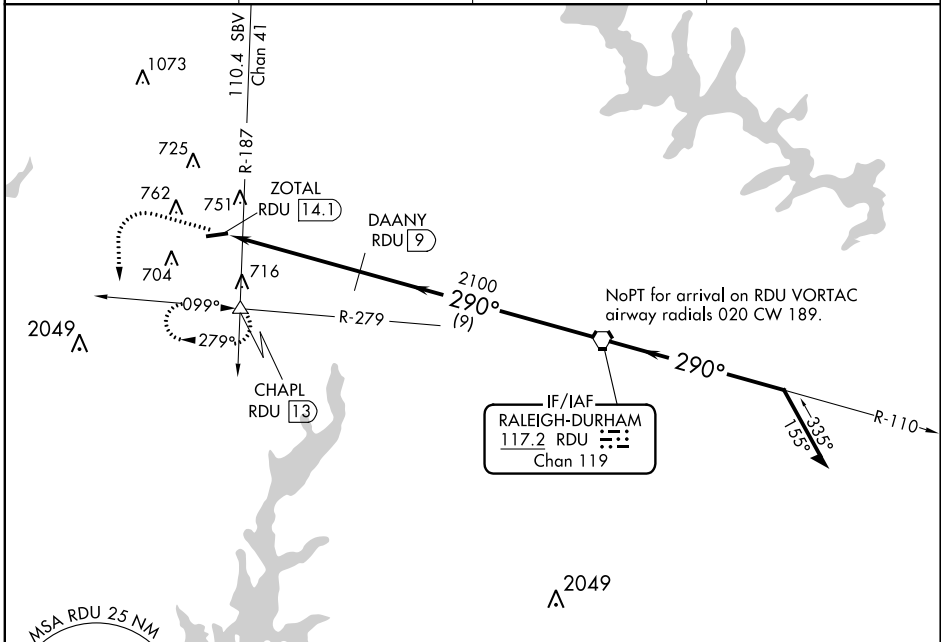
# VOR/DME RWY 27

HORACE WILLIAMS (IGX)

**Procedure NA at night. Helicopter visibility reduction below 1 SM NA.**

**MISSED APPROACH:** Climb to 2300 then climbing left turn to 3100 on heading 180° and on RDU VORTAC R-279 to CHAPL INT/RDU 13 DME and hold.

ASOS <b>134.575</b>	RALEIGH APP CON <b>132.35 256.9</b>	CLNC DEL <b>126.5</b>	UNICOM <b>123.0 (CTAF) 0</b>
------------------------	----------------------------------------	--------------------------	---------------------------------



SE-2. 27 APR 2017 to 25 MAY 2017

SE-2. 27 APR 2017 to 25 MAY 2017

	ELEV 512	THRE 492
2300	3100	CHAPL
↑	hdg 180° RDU R-279	△
ZOTAL RDU 14.1		DAANY RDU 9
≤ 2.91° TCH 40		
5.1 NM		9 NM
RDU VORTAC 6000		110°
290°		3000
290°		3000
290°		3000
Remain within 10 NM		
VGSI and descent angles not coincident (VGSI Angle 4.00/TCH 23).		
CATEGORY	A	B
S-27	1060-1	568 (600-1)
CIRCLING	1100-1	1120-1
	588 (600-1)	608 (700-1)
		C
		1060-1 <sup>5</sup> / <sub>8</sub>
		568 (600-1 <sup>5</sup> / <sub>8</sub> )
		D
		1120-2
		608 (700-2)

