

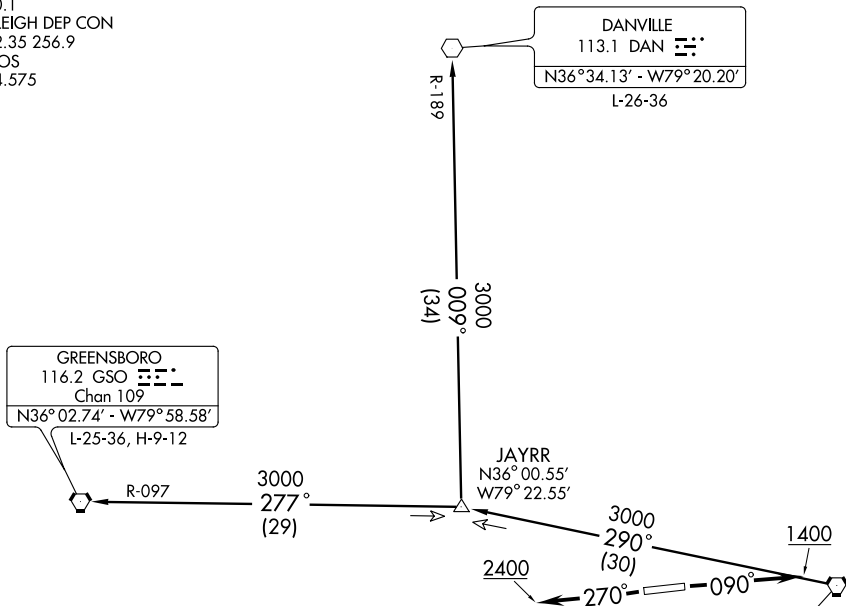
(BLUE4.RDU) 14037

SL-6203 (FAA)

HORACE WILLIAMS (IGX)  
CHAPEL HILL, NORTH CAROLINA

# BLUE DEVIL FOUR DEPARTURE

RALEIGH CLNC DEL  
120.1  
RALEIGH DEP CON  
132.35 256.9  
ASOS  
134.575



## TAKEOFF OBSTACLES NOTES:

Rwy 9: Trees 1084 feet from DER, 250 feet left of centerline, 82 feet AGL/551 feet MSL. Trees 785 feet from DER, 401 feet right of centerline, 56 feet AGL/520 feet MSL.  
 Rwy 27: Trees 200 feet from DER, 240 feet left of centerline, 43 feet AGL/542 feet MSL.

TAKEOFF MINIMUMS:  
 Rwys 9, 27, STANDARD

NOTE: Turbojets not authorized.  
 NOTE: Radar Required.  
 NOTE: Chart not to scale.



## DEPARTURE ROUTE DESCRIPTION

TAKE-OFF RWY 9: Climb heading 090° to 1400, thence....  
TAKE-OFF RWY 27: Climb heading 270° to 2400, thence....

....or as assigned for vectors to assigned transition. Expect clearance to filed altitude/flight level ten minutes after departure.

DANVILLE TRANSITION (BLUE4.DAN): From over RDU VORTAC via RDU R-290 to JAYRR INT then via DAN R-189 to DAN VOR.

GREENSBORO TRANSITION (BLUE4.GSO): From over RDU VORTAC via RDU R-290 to JAYRR INT then via GSO R-097 to GSO VORTAC.

# BLUE DEVIL FOUR DEPARTURE

(BLUE4.RDU) 14037

CHAPEL HILL, NORTH CAROLINA  
HORACE WILLIAMS (IGX)

SE-2, 08 JAN 2015 to 05 FEB 2015

SE-2, 08 JAN 2015 to 05 FEB 2015