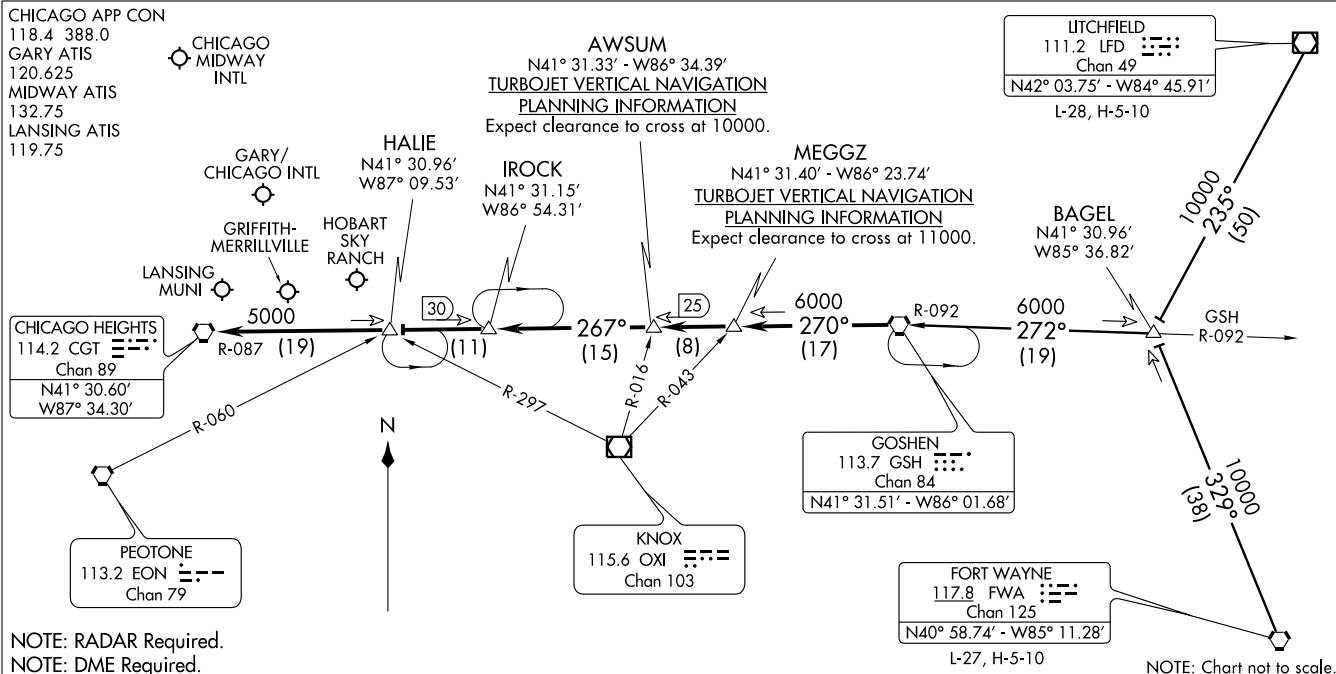


GOSHEN FIVE ARRIVAL
(GSH.GSH5) 11237



NOTE: RADAR Required.
NOTE: DME Required.

GOSHEN FIVE ARRIVAL
(GSH.GSH5) 11237

ST-81 (FAA)

ARRIVAL ROUTE DESCRIPTION

FORT WAYNE TRANSITION (FWA.GSH5): From over FWA VORTAC via FWA R-329 to BAGEL INT then via GSH R-092 to GSH VORTAC. Thence . . .

LITCHFIELD TRANSITION (LFD.GSH5): From over LFD VOR/DME via LFD R-235 to BAGEL INT then via GSH R-092 to GSH VORTAC. Thence . . .

. . . . From over GSH VORTAC via GSH R-270 to MEGGZ INT/GSH 17 DME, thence via GSH R-270 to AWSUM INT/GSH 25 DME, thence via CGT R-087 to IROCK/CGT 30 DME, thence via CGT R-087 to HALIE INT/CGT 19 DME, thence via CGT R-087 to CGT VORTAC. Expect radar vectors to final approach course.

CHICAGO, ILLINOIS

CHICAGO, ILLINOIS