

LOC I-AAQ 110.75	APP CRS 097°	Rwy Idg THRE Apt Elev 5208 450 501
----------------------------	------------------------	--

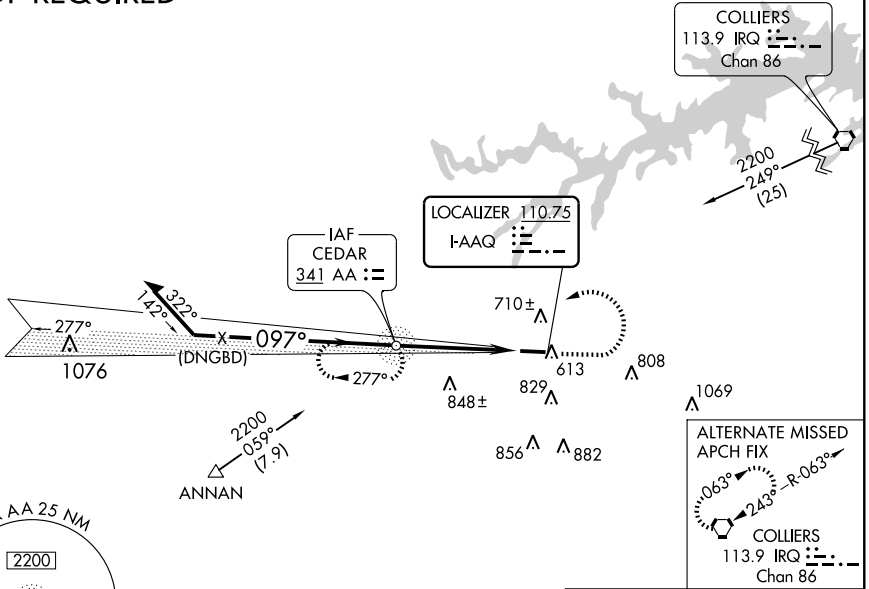
ILS or LOC/NDB RWY 10
THOMSON-McDUFFIE COUNTY (HQU)

▽ Visibility reduction by helicopters NA. When local altimeter setting not received, use Daniel Field altimeter setting: increase all DA 67 feet and all MDA 80 feet,
▲ NA increase visibility S-ILS 10 all Cats ¼ mile and S-LOC 10 and Circling Cats C/D ¼ mile. When VGSI inop, Straight-in/Circling Rwy 10 procedure NA at night.

MISSED APPROACH: Climb to 1200 then climbing left turn to 2400 direct AA NDB and hold.

AWOS-3 120.625	AUGUSTA APP CON ★ 126.8 270.3	UNICOM 122.8 (CTAF) 0	GCO 121.725
--------------------------	---	---------------------------------	-----------------------

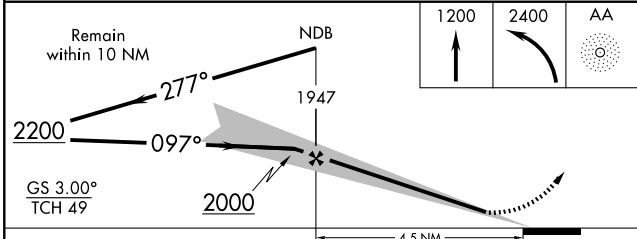
ADF REQUIRED



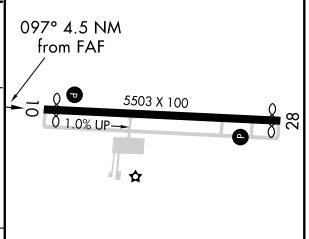
SE-4, 31 MAY 2012 to 28 JUN 2012

SE-4, 31 MAY 2012 to 28 JUN 2012

MSA AA 25 NM	2200	2900
040°	300°	



ELEV 501	THRE 450
----------	----------



CATEGORY	A	B	C	D
S-ILS 10		832-1¼	382 (400-1¼)	
S-LOC 10	960-1 510 (500-1)		960-1¾ 510 (500-1¾)	
CIRCLING	1020-1 519 (600-1)	1080-1 579 (600-1)	1080-1½ 579 (600-1½)	1140-2 639 (700-2)

FAF to MAP 4.5 NM					
Knots	60	90	120	150	180
Min:Sec	4:30	3:00	2:15	1:48	1:30

NDB AA 341	APP CRS 096°	Rwy Idg 5208 THRE 450 Apt Elev 501
----------------------	------------------------	--

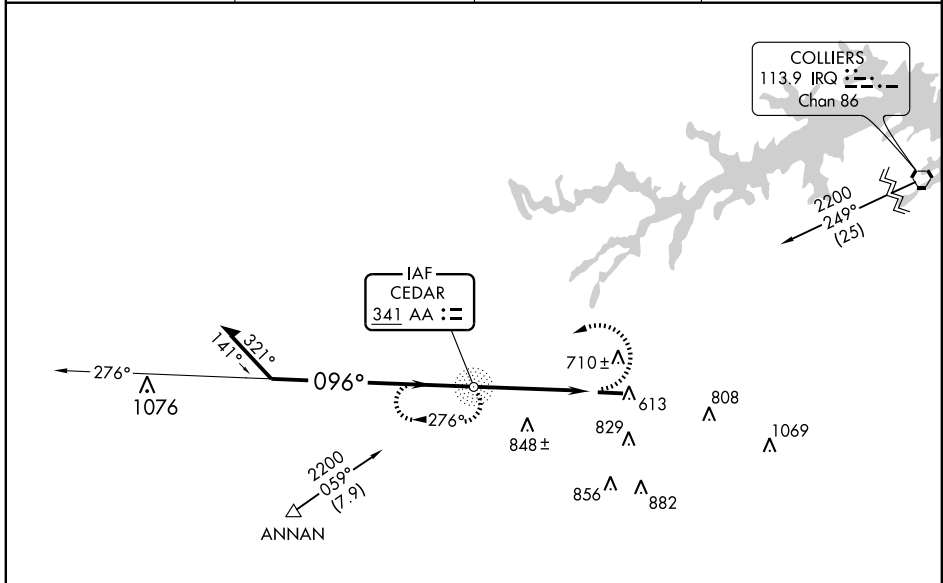
NDB RWY 10

THOMSON-McDUFFIE COUNTY (HQU)

▽ When local altimeter setting not received, use Daniel Field altimeter setting and increase all MDA 80 feet and visibility S-10 Cat C/D ¼ mile, Circling Cat C/D ¼ mile.
△ NA Visibility reduction by helicopters NA. When VGSI inop, Straight-In/Circling Rwy 10 procedure NA at night.

MISSED APPROACH:
Climbing left turn to 2400 direct AA NDB and hold.

AWOS-3 120.625	AUGUSTA APP CON ★ 126.8 270.3	UNICOM 122.8 (CTAF) 0	GCO 121.725
--------------------------	---	---------------------------------	-----------------------



ELEV 501	THRE 450
----------	----------

Diagram of the final approach segment showing a 0.1% UP slope, 5503 X 100, and HIRL Rwy 10-28.

FAF to MAP 4.5 NM					
Knots	60	90	120	150	180
Min:Sec	4:30	3:00	2:15	1:48	1:30

CATEGORY	A		B		C		D	
	1080-1		630 (600-1)		1080-1¾		630 (600-1¾)	
S-10	1080-1		630 (600-1)		1080-1¾		630 (600-1¾)	
CIRCLING	1080-1		579 (600-1)		1080-1¾		1140-2 639 (700-2)	

THOMSON, GEORGIA	33° 32'N-82° 31'W	THOMSON-McDUFFIE COUNTY (HQU)
Andt 1 30JUN11		NDB RWY 10

SE-4, 31 MAY 2012 to 28 JUN 2012

SE-4, 31 MAY 2012 to 28 JUN 2012

WAAS CH 56521 W10A	APP CRS 097°	Rwy Idg THRE 450 Apt Elev 501
--	------------------------	---

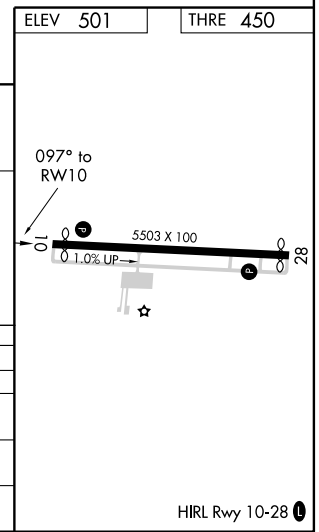
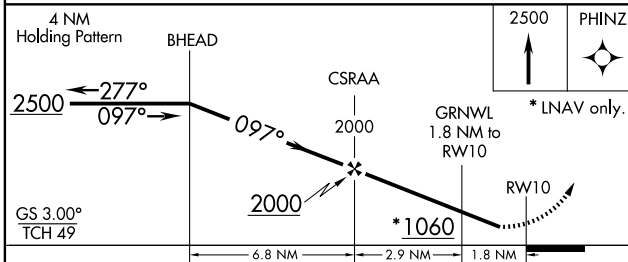
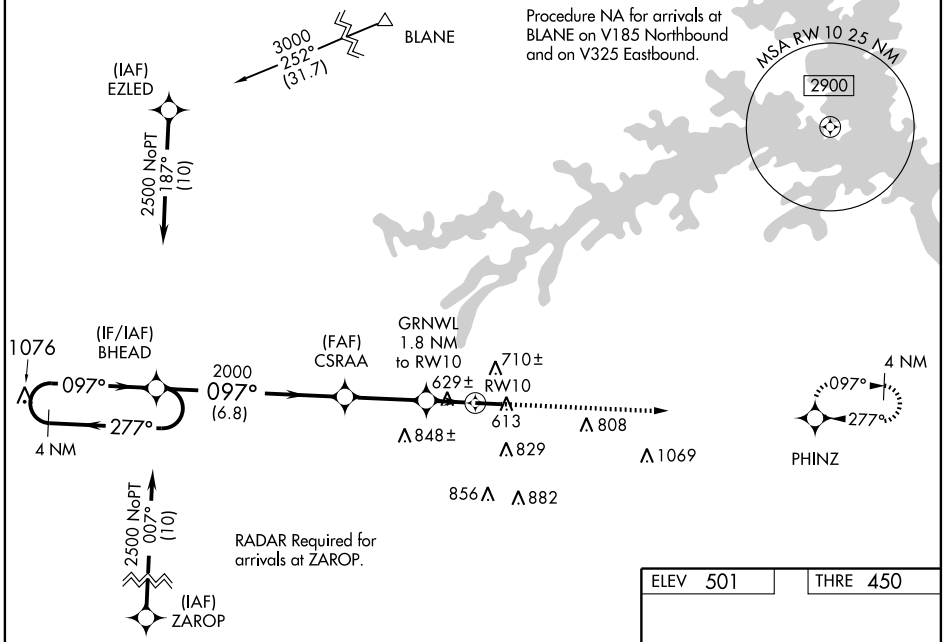
RNAV (GPS) RWY 10

THOMSON-McDUFFIE COUNTY (HQU)

⚠ Baro-VNAV NA when using Daniel Field altimeter setting. For uncompensated Baro-VNAV systems, LNAV/VNAV NA below -15°C (5°F) or above 41°C (105°F). DME/DME RNP-0.3 NA. Visibility reduction by helicopters NA. When local altimeter setting not received, use Daniel Field altimeter setting and increase all DA 67 feet and all MDA 80 feet, and increase LPV and LNAV/VNAV all Cats visibility ¼ mile; increase LNAV Cats C and D visibility ½ mile, and increase Circling Cats C and D visibility ¼ mile. When VGSI inop, Straight-in/Circling Rwy 10 procedure NA at night.

⚠ MISSED APPROACH: Climb to 2500 direct PHINZ and hold.

AWOS-3 120.625	AUGUSTA APP CON ★ 126.8 270.3	UNICOM 122.8 (CTAF) 0	GCO 121.725
--------------------------	---	---------------------------------	-----------------------



CATEGORY	A	B	C	D
LPV DA		833-1¼	383 (400-1¼)	
LNAV/VNAV DA		944-1½	494 (500-1½)	
LNAV MDA	880-1	430 (400-1)	880-1¼	430 (400-1¼)
CIRCLING	1020-1 519 (600-1)	1080-1 579 (600-1)	1080-1½ 579 (600-1½)	1140-2 639 (700-2)

SE-4, 31 MAY 2012 to 28 JUN 2012

SE-4, 31 MAY 2012 to 28 JUN 2012

WAAS CH 58121 W28A	APP CRS 277°	Rwy Idg THRE 497 Apt Elev 501	5303
--	------------------------	---	-------------

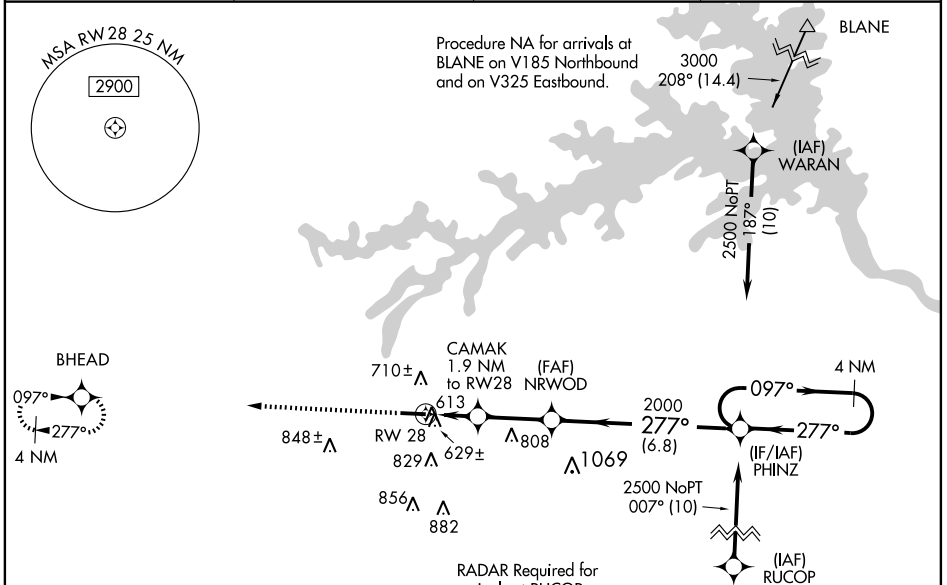
RNAV (GPS) RWY 28

THOMSON-McDUFFIE COUNTY (HQU)

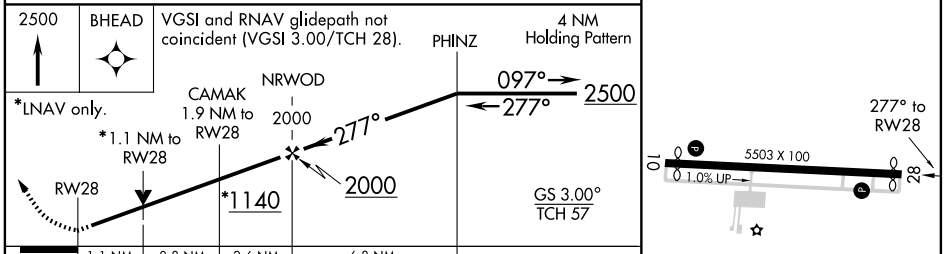
⚠ Baro-VNAV NA when using Daniel Field altimeter setting. For uncompensated Baro-VNAV systems, LNAV/VNAV NA below -15°C (5°F) or above 40°C (104°F). DME/DME RNP-0.3 NA. Visibility reduction by helicopters NA. VDP NA with Daniel Field altimeter setting. When local altimeter setting not received, use Daniel Field altimeter setting and increase all DA 67 feet and all MDA 80 feet, and increase LPV and LNAV/VNAV all Cats visibility ¼ mile; increase LNAV and Circling Cats C and D ¼ mile.

⚠ MISSED APPROACH: Climb to 2500 direct BHEAD and hold.

AWOS-3 120.625	AUGUSTA APP CON ★ 126.8 270.3	UNICOM 122.8 (CTAF) 0	GCO 121.725
--------------------------	---	---------------------------------	-----------------------



ELEV 501	THRE 497
-----------------	-----------------



CATEGORY	A	B	C	D
LPV DA		787-7/8	290 (300-7/8)	
LNAV/VNAV DA		810-1	313 (400-1)	
LNAV MDA	880-1	383 (400-1)	880-1 1/8	383 (400-1 1/8)
CIRCLING	1020-1 519 (600-1)	1080-1 579 (600-1)	1080-1 1/2 579 (600-1 1/2)	1140-2 639 (700-2)

HIRL Rwy 10-28 0

SE-4, 31 MAY 2012 to 28 JUN 2012

SE-4, 31 MAY 2012 to 28 JUN 2012

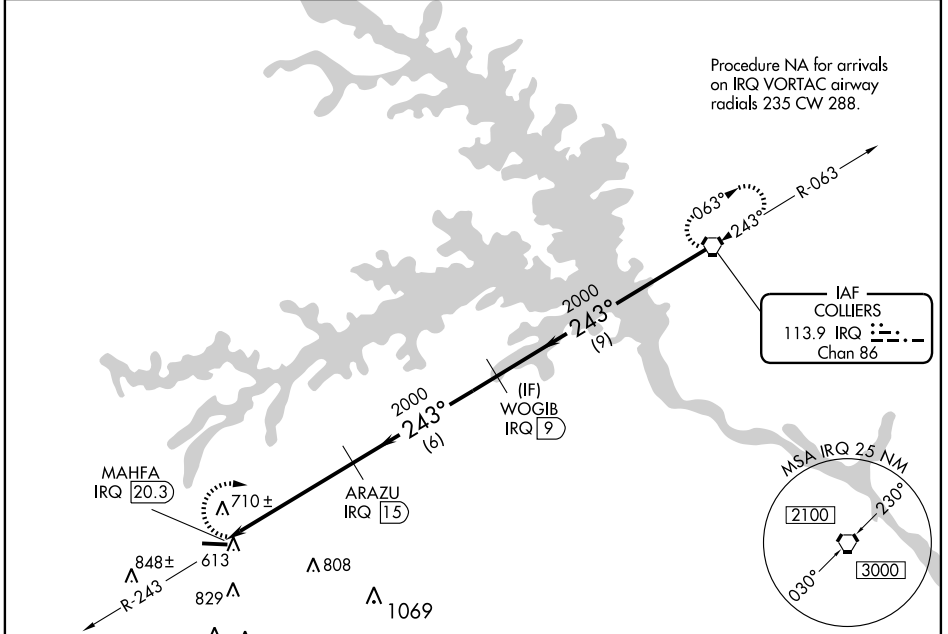
VORTAC IRQ 113.9 Chan 86	APP CRS 243°	Rwy Idg TDZE Apt Elev	N/A N/A 501
--	------------------------	-----------------------------	--

VOR/DME-A
THOMSON-McDUFFIE COUNTY (HQU)

▼ Visibility reduction by helicopters NA. When local altimeter setting not received, use Daniel Field altimeter setting and increase all MDA 80 feet and visibility Cat C/D ¼ mile.

▲ MISSED APPROACH: Climbing right turn to 2400 direct IRQ VORTAC and hold.

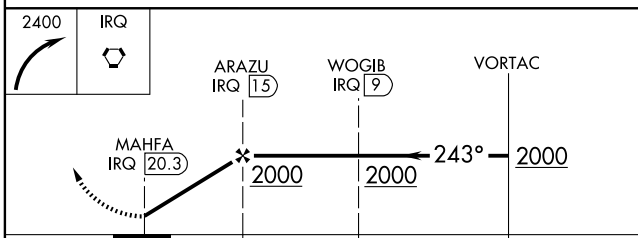
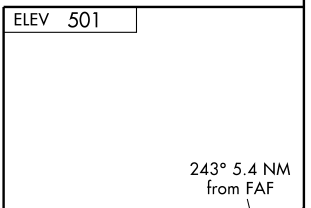
AWOS-3 120.625	AUGUSTA APP CON ★ 126.8 270.3	UNICOM 122.8 (CTAF) 0	GCO 121.725
--------------------------	---	---------------------------------	-----------------------



SE-4, 31 MAY 2012 to 28 JUN 2012

SE-4, 31 MAY 2012 to 28 JUN 2012

2400	IRQ			
------	-----	--	--	--



CATEGORY	A	B	C	D
CIRCLING	1060-1 559 (600-1)	1080-1¼ 579 (600-1¼)	1080-1½ 579 (600-1½)	1140-2 639 (700-1)

ELEV 501

HIRL Rwy 10-28 0