

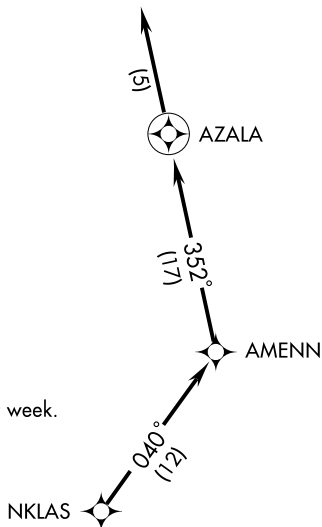
(AZALA2.AZALA) 08157

SL-6201 (FAA)

THOMSON-McDUFFIE COUNTY (HQU)
THOMSON, GEORGIA

AZALA TWO DEPARTURE (RNAV)

AUGUSTA DEP CON ★
126.8 270.3
CTAF
122.8



- NOTE: RNAV 1.
- NOTE: RADAR Required.
- NOTE: DME/DME/IRU or GPS Required.
- NOTE: Do not exceed 230 KIAS until advised by ATC.
- NOTE: For Prop aircraft during Masters golf tournament week.

TAKEOFF MINIMUMS:

Rwy 10: STANDARD.

Rwy 28: 200-1¼ or STANDARD with a minimum climb of 240 feet per NM to 700, or alternatively, with standard takeoff minimums and a normal 200 feet/NM climb gradient, takeoff must occur no later than 1800 feet prior to departure end of runway.

NOTE: Chart not to scale.

SE-4, 31 MAY 2012 to 28 JUN 2012

SE-4, 31 MAY 2012 to 28 JUN 2012



DEPARTURE ROUTE DESCRIPTION

TAKEOFF RWY 10, 28: Climb heading assigned by ATC, expect vectors to NKLAS, then via depicted route to AZALA, then fly heading 352°, expect radar vectors. Thence....

.... maintain altitude assigned by ATC. Expect clearance to filed altitude/flight level within 10 minutes after departure.

TAKEOFF OBSTACLE NOTES:

Rwy 10: Numerous trees beginning abeam DER, 31' left of centerline, up to 100' AGL/599' MSL. Building 934' from DER, 19' left of centerline, 50' AGL/549' MSL. Numerous trees beginning 377' from DER, 94' right of centerline, up to 100' AGL/599' MSL.

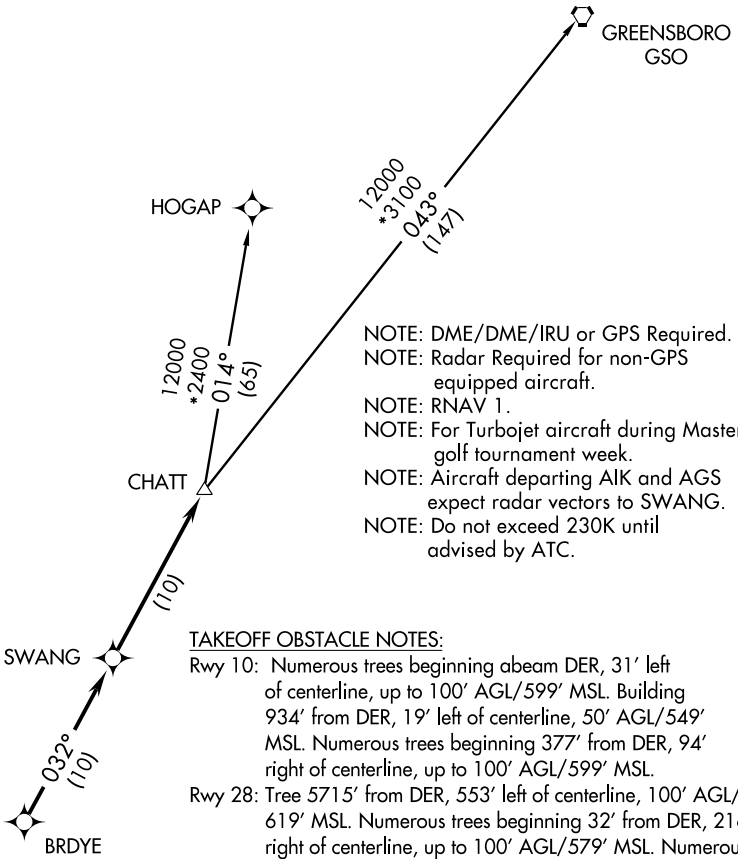
Rwy 28: Tree 5,715' from DER, 553' left of centerline, 100' AGL/619' MSL. Numerous trees beginning 32' from DER, 216' right of centerline, up to 100' AGL/579' MSL. Numerous trees beginning 8' from DER, 53' left of centerline, up to 100' AGL/629' MSL.

AZALA TWO DEPARTURE (RNAV)
(AZALA2.AZALA) 08157

THOMSON, GEORGIA
THOMSON-McDUFFIE COUNTY (HQU)

CHATT THREE DEPARTURE (RNAV)

AUGUSTA DEP CON ★
126.8 270.3
CTAF
122.8



- NOTE: DME/DME/IRU or GPS Required.
- NOTE: Radar Required for non-GPS equipped aircraft.
- NOTE: RNAV 1.
- NOTE: For Turbojet aircraft during Masters golf tournament week.
- NOTE: Aircraft departing AIK and AGS expect radar vectors to SWANG.
- NOTE: Do not exceed 230K until advised by ATC.

TAKEOFF OBSTACLE NOTES:

- Rwy 10: Numerous trees beginning abeam DER, 31' left of centerline, up to 100' AGL/599' MSL. Building 934' from DER, 19' left of centerline, 50' AGL/549' MSL. Numerous trees beginning 377' from DER, 94' right of centerline, up to 100' AGL/599' MSL.
- Rwy 28: Tree 5715' from DER, 553' left of centerline, 100' AGL/619' MSL. Numerous trees beginning 32' from DER, 216' right of centerline, up to 100' AGL/579' MSL. Numerous trees beginning 8' from DER, 53' left of centerline, up to 100' AGL/629' MSL.

NOTE: Chart not to scale

DEPARTURE ROUTE DESCRIPTION

TAKEOFF RWY 10, 28: Climb heading assigned by ATC. Expect vectors to BRDYE, then on depicted route to CHATT, thence

. . . . Maintain altitude assigned by ATC. Expect clearance to filed altitude/flight level within 10 minutes after departure.

GREENSBORO TRANSITION (CHATT3.GSO):
HOGAP TRANSITION (CHATT3.HOGAP):

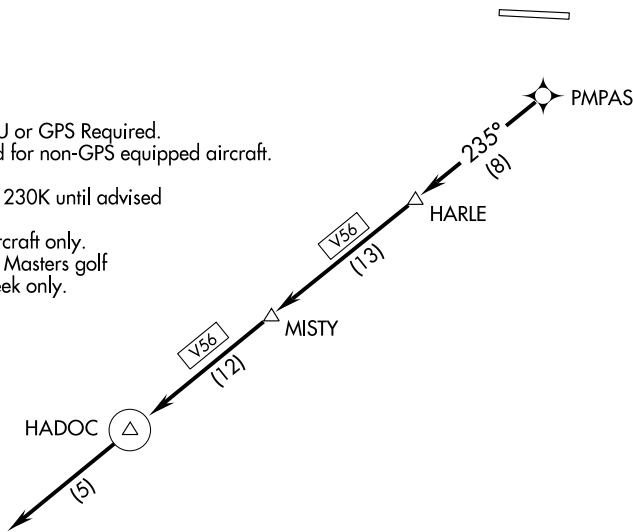
TAKEOFF MINIMUMS:

Rwy 10: Standard.
Rwy 28: 200-1¼ or standard with a minimum climb of 240' per NM to 700, or alternatively, with standard takeoff minimums and a normal 200'/NM climb gradient, takeoff must occur no later than 1800' prior to DER.

MISTY FOUR DEPARTURE (RNAV)

AUGUSTA DEP CON*
126.8 270.3
CTAF
122.8

- NOTE: DME/DME/IRU or GPS Required.
- NOTE: Radar required for non-GPS equipped aircraft.
- NOTE: RNAV 1.
- NOTE: Do not exceed 230K until advised by ATC.
- NOTE: For turbojet aircraft only.
- NOTE: For use during Masters golf tournament week only.



TAKEOFF MINIMUMS:

- Rwy 10: Standard. ATC climb of 440' per NM to 4000.
- Rwy 28: 200-1/4 or Standard with minimum obstacle climb of 240' per NM to 700, or alternatively, with standard takeoff minimums and a normal 200'/NM climb gradient, takeoff must occur no later than 1800' prior to DER. ATC climb of 450' per NM to 4000.

TAKEOFF OBSTACLE NOTES:

- Rwy 10: Numerous trees beginning abeam DER, 31' left of centerline, up to 100' AGL/599' MSL.
Building 934' from DER, 19' left of centerline, 50' AGL/549' MSL.
Numerous trees beginning 377' from DER, 94' right of centerline, up to 100' AGL/599' MSL.
- Rwy 28: Tree 5715' from DER, 553' left of centerline, 100' AGL/619' MSL.
Numerous trees beginning 32' from DER, 216' right of centerline, up to 100' AGL/579' MSL.
Numerous trees beginning 8' from DER, 53' left of centerline, up to 100' AGL/629' MSL.

NOTE: Chart not to scale.



DEPARTURE ROUTE DESCRIPTION

TAKEOFF RWY 10, 28: Climb on assigned heading for radar vectors to PMPAS, then on depicted route to HADOC, thence....

.... Maintain altitude assigned by ATC. Expect clearance to filed altitude/flight level within 10 minutes after departure.

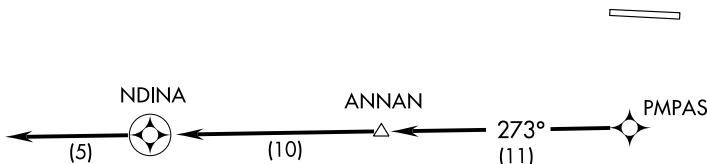
NDINA THREE DEPARTURE (RNAV)

AUGUSTA DEP CON ★
126.8 270.3
CTAF
122.8

- NOTE: DME/DME/IRU or GPS Required.
- NOTE: Radar required for non-GPS equipped aircraft.
- NOTE: RNAV 1.
- NOTE: For prop aircraft during Masters golf tournament week.
- NOTE: Do not exceed 230K until advised by ATC.

TAKEOFF MINIMUMS:

- Rwy 10: Standard.
- Rwy 28: 200-1¼ or standard with minimum obstacle climb of 240' per NM to 700, or alternatively, with standard takeoff minimums and a normal 200'/NM climb gradient, takeoff must occur no later than 1800' prior to DER.



TAKEOFF OBSTACLE NOTES:

- Rwy 10: Numerous trees beginning abeam DER, 31' left of centerline, up to 100' AGL/599' MSL.
Building 934' from DER, 19' left of centerline, 50' AGL/549' MSL.
Numerous trees beginning 377' from DER, 94' right of centerline, up to 100' AGL/599' MSL.
- Rwy 28: Tree 5715' from DER, 553' left of centerline, 100' AGL/619' MSL.
Numerous trees beginning 32' from DER, 216' right of centerline, up to 100' AGL/579' MSL.
Numerous trees beginning 8' from DER, 53' left of centerline, up to 100' AGL/629' MSL.

NOTE: Chart not to scale.



DEPARTURE ROUTE DESCRIPTION

TAKEOFF RWY 10, 28: Climb heading assigned by ATC, expect radar vectors to PMPAS, then on depicted route to NDINA, then on heading 273°, expect radar vectors, thence....

....Maintain altitude assigned by ATC. Expect clearance to filed altitude within 10 minutes after departure.

SAMMI TWO DEPARTURE (RNAV)
(SAMMI2.SAMMI) 08157

THOMSON-McDUFFIE COUNTY (HQUT)
THOMSON, GEORGIA

AUGUSTA DEP CON ★
126.8 270.3
CTAF
122.8

TAKEOFF MINIMUMS:

Rwy 10: STANDARD.

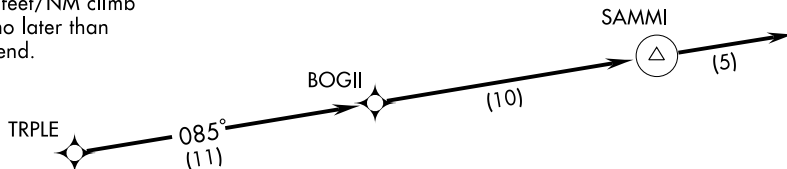
Rwy 28: 200-1¼ or STANDARD with a minimum climb of 240 feet per NM to 700, or alternatively, with standard takeoff minimums and a normal 200 feet/NM climb gradient, takeoff must occur no later than 1800 feet prior to departure end.

NOTE: RNAV 1.

NOTE: RADAR Required.

NOTE: DME/DME/IRU or GPS Required.

NOTE: Do not exceed 230 KIAS until advised by ATC.



NOTE: Chart not to scale.



DEPARTURE ROUTE DESCRIPTION

TAKEOFF RWY 10,28: Climb heading assigned by ATC, expect vectors to TRPLE, then via depicted route to SAMMI, then fly heading 085°, expect radar vectors. Thence....

.... maintain altitude assigned by ATC. Expect clearance to filed altitude/flight level within 10 minutes after departure.

TAKEOFF OBSTACLE NOTES:

Rwy 10: Numerous trees beginning abeam DER, 31' left of centerline, up to 100' AGL/599' MSL. Building 934' from DER, 19' left of centerline, 50' AGL/549' MSL. Numerous trees beginning 377' from DER, 94' right of centerline, up to 100' AGL/599' MSL.

Rwy 28: Tree 5,715' from DER, 553' left of centerline, 100' AGL/619' MSL. Numerous trees beginning 32' from DER, 216' right of centerline, up to 100' AGL/579' MSL. Numerous trees beginning 8' from DER, 53' left of centerline, up to 100' AGL/629' MSL.

(SAMMI2.SAMMI) 08157
SAMMI TWO DEPARTURE (RNAV)

THOMSON-McDUFFIE COUNTY (HQUT)
THOMSON, GEORGIA
SL-6201 (FAA)