



ARRIVAL ROUTE DESCRIPTION

ALBANY TRANSITION (ALB.NOBBI5): From over ALB VORTAC via ALB R-194 to WIGAN INT, then via IGN R-013 to TRESA INT, then via CMK R-356 to CASSH INT. Thence. . . .

BARNES TRANSITION (BAF.NOBBI5): From over BAF VORTAC via BAF R-254 and PWL R-071 to PWL VOR/DME, then via PWL R-216 to CASSH INT. Thence. . . .

CHESTER TRANSITION (CTR.NOBBI5): From over CTR VOR/DME via CTR R-236 and PWL R-055 to PWL VOR/DME, then via PWL R-216 to CASSH INT. Thence. . . .

DE LANCEY TRANSITION (DNY.NOBBI5): From over DNY VOR/DME via DNY R-096 to PETER INT, then via RKA R-127 to CYPER INT, then via PWL R-316 to TRESA INT, then via CMK R-356 to CASSH INT. Thence. . . .

ROCKDALE TRANSITION (RKA.NOBBI5): From over RKA VOR/DME via RKA R-127 to CYPER INT, then via PWL R-316 to TRESA INT, then via CMK R-356 to CASSH INT. Thence. . . .

. . . . From over CASSH INT via CMK R-356 to CMK VOR/DME, then via CMK R-169 to RYMES INT, then via LGA VOR/DME R-044 to HAARP INT to CRALY INT. Expect radar vectors to final approach course.

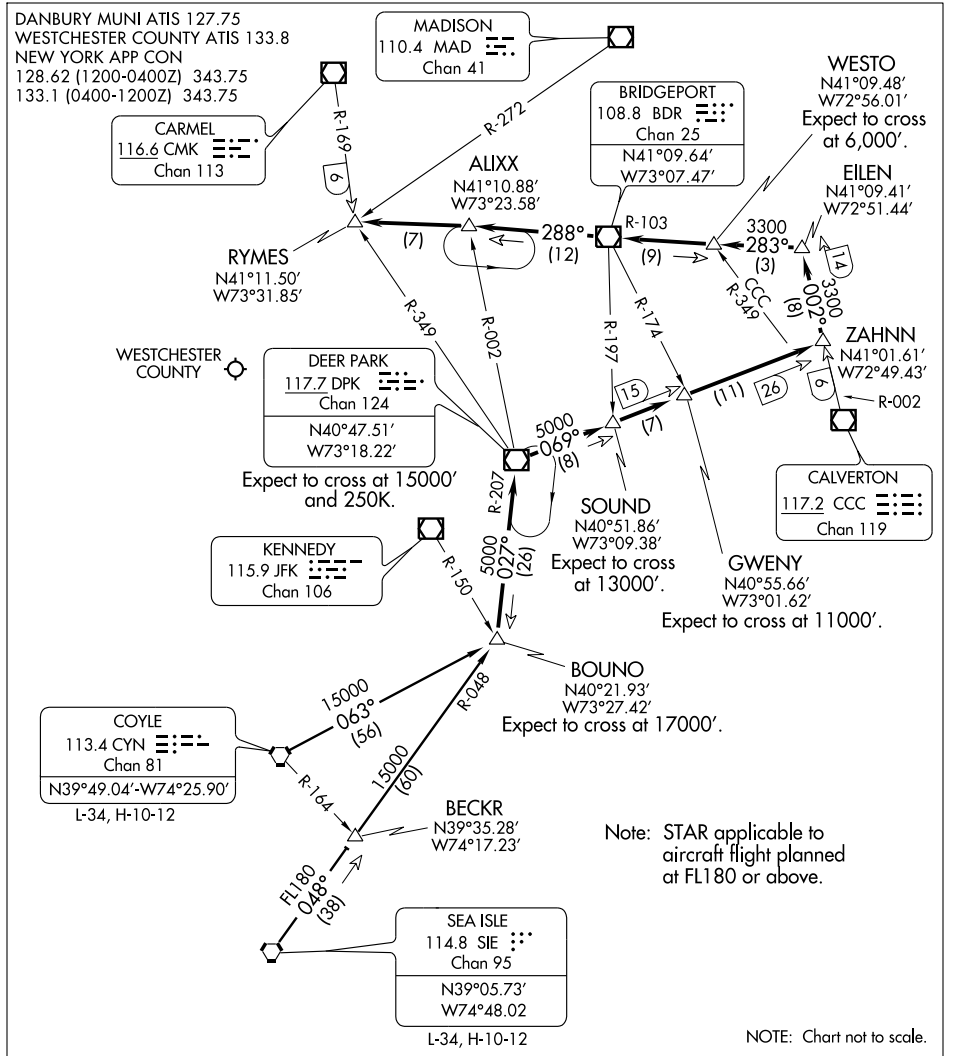
NE-2, 31 MAY 2012 to 28 JUN 2012

NE-2, 31 MAY 2012 to 28 JUN 2012

(BOUNO.BOUNO4) 11181  
**BOUNO FOUR ARRIVAL**

ST-651 (FAA)

WESTCHESTER COUNTY  
 WHITE PLAINS, NEW YORK



NE-2, 31 MAY 2012 to 28 JUN 2012

NE-2, 31 MAY 2012 to 28 JUN 2012

**ARRIVAL ROUTE DESCRIPTION**

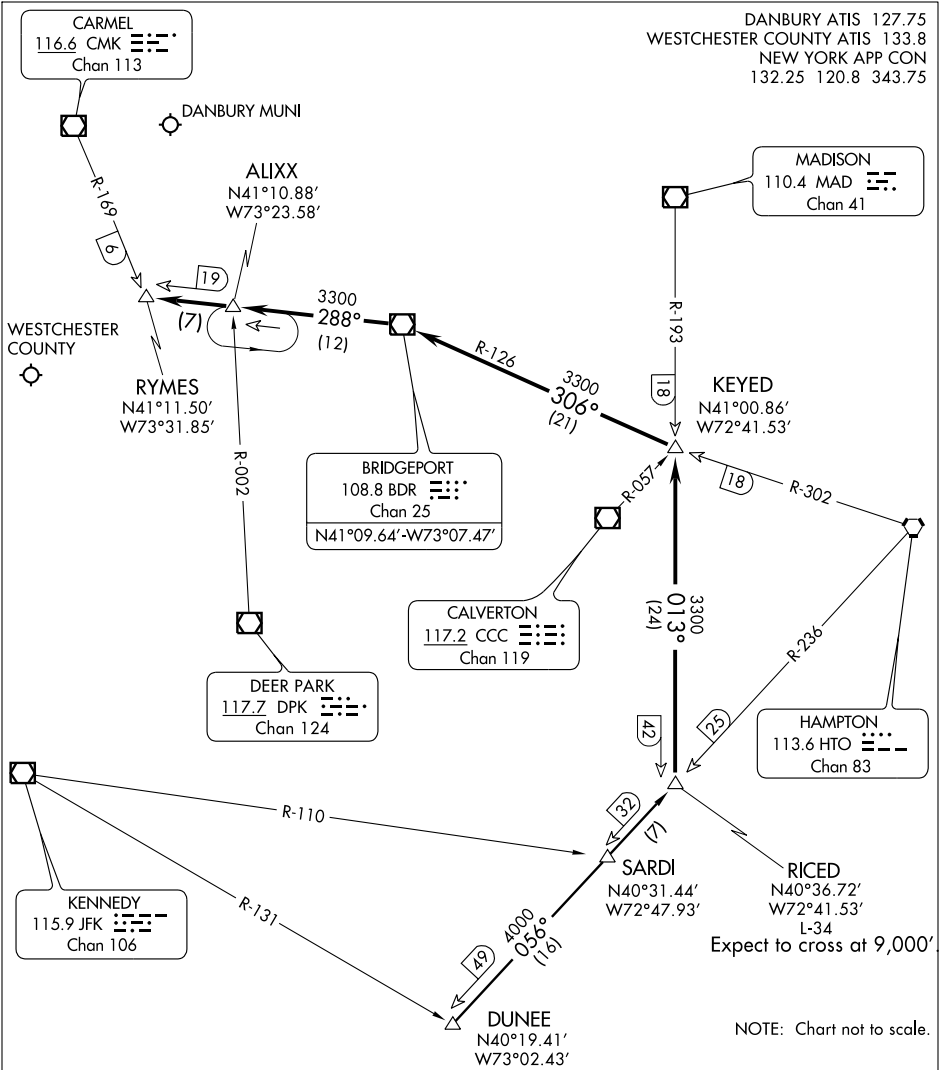
COYLE TRANSITION (CYN.BOUNO4): From over CYN VORTAC via CYN R-063 to BOUNO INT. Thence . . . .  
SEA ISLE TRANSITION (SIE.BOUNO4): From over SIE VORTAC via SIE R-048 to BOUNO INT. Thence . . . .  
 . . . . From over BOUNO INT via DPK R-207 to DPK VOR/DME, then via DPK R-069 to ZAHNN INT, then via CCC R-002 to EILEN INT, then via BDR R-103 to BDR VOR/DME, then via BDR R-288 to RYMES INT. Expect radar vectors to final approach course.

**BOUNO FOUR ARRIVAL**  
 (BOUNO.BOUNO4) 11181

WHITE PLAINS, NEW YORK  
 WESTCHESTER COUNTY

# RICED FOUR ARRIVAL (RICED.RICED4)

WHITE PLAINS, NEW YORK



NOTE: Chart not to scale.

## ARRIVAL ROUTE DESCRIPTION

DUNEE TRANSITION (DUNEE.RICED4): From over DUNEE INT via HTO R-236 to RICED INT, thence. . . .

. . . . From over RICED INT via MAD R-193 to intercept BDR R-126 to BDR VOR/DME then via BDR R-288 to RYMES INT. Expect radar vectors to final approach course.

# RICED FOUR ARRIVAL (RICED.RICED4)

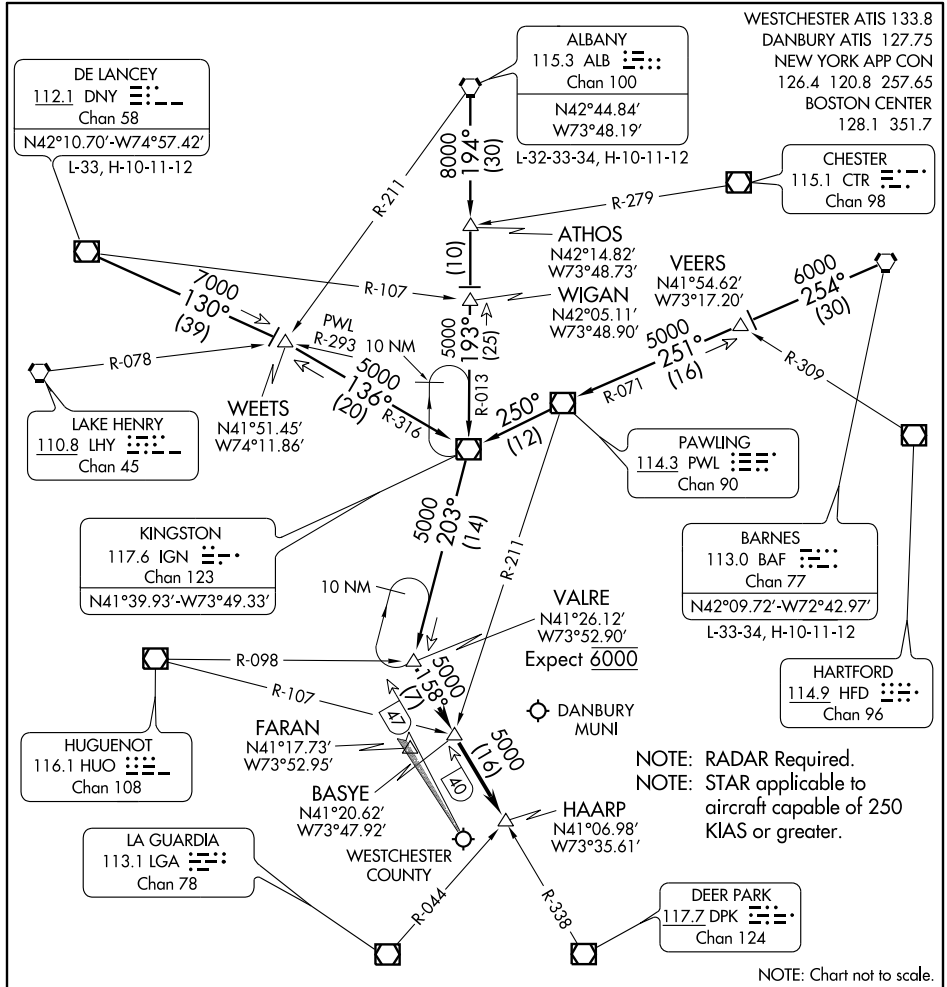
WHITE PLAINS, NEW YORK

NE-2, 31 MAY 2012 to 28 JUN 2012

NE-2, 31 MAY 2012 to 28 JUN 2012

# VALRE FOUR ARRIVAL

WHITE PLAINS, NEW YORK



NE-2, 31 MAY 2012 to 28 JUN 2012

NE-2, 31 MAY 2012 to 28 JUN 2012

## ARRIVAL ROUTE DESCRIPTION

**ALBANY TRANSITION (ALB.VALRE4):** From over ALB VORTAC via ALB R-194 to ATHOS INT, then via ALB R-194 to WIGAN INT, then via IGN R-013 to IGN VOR/DME, then via IGN R-203 to VALRE INT. Thence. . . .

**BARNES TRANSITION (BAF.VALRE4):** From over BAF VORTAC via BAF R-254 to VEERS INT, then via PWL R-071 to PWL VOR/DME, then via PWL R-250 to IGN VOR/DME, then via IGN R-203 to VALRE INT. Thence. . . .

**DE LANCEY TRANSITION (DNY.VALRE4):** From over DNY VOR/DME via DNY R-130 to WEETS INT, then via IGN R-316 to IGN VOR/DME, then via IGN R-203 to VALRE INT. Thence. . . .

. . . .From over VALRE INT via DPK R-338 to BASYE INT, then to HAARP INT. Expect radar vector to final approach course prior to HAARP INT.

# VALRE FOUR ARRIVAL

WHITE PLAINS, NEW YORK