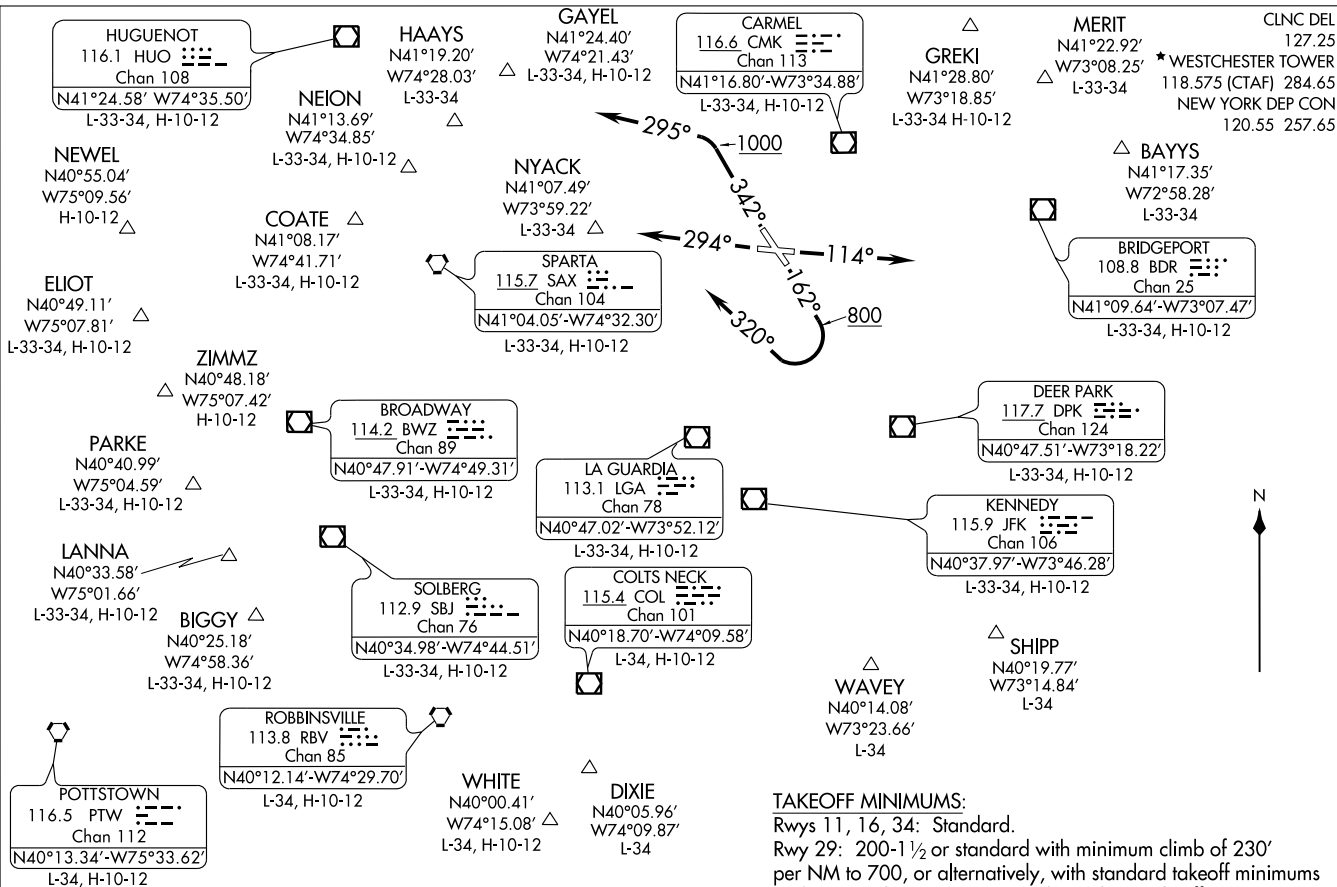


WESTCHESTER THREE DEPARTURE  
(HPN3, HPN) 11293

WHITE PLAINS, NEW YORK  
WHITE PLAINS/WESTCHESTER COUNTY (HPN)



WESTCHESTER THREE DEPARTURE  
(HPN3, HPN) 11293

WHITE PLAINS/WESTCHESTER COUNTY (HPN)  
S-651 (FAA)

(NARRATIVE ON FOLLOWING PAGE)

NOTE: Chart not to scale.

**TAKEOFF MINIMUMS:**  
Rwys 11, 16, 34: Standard.  
Rwy 29: 200-1½ or standard with minimum climb of 230' per NM to 700, or alternatively, with standard takeoff minimums and a normal 200' per NM climb gradient, takeoff must occur no later than 1900' prior to departure end of runway.

# WESTCHESTER THREE DEPARTURE



## DEPARTURE ROUTE DESCRIPTION

TAKEOFF RUNWAY 11: Climb heading 114°, maintain 3000. Thence....

TAKEOFF RUNWAY 29: Climb heading 294°, maintain 3000. Thence....

\*TAKEOFF RUNWAY 16: Climb heading 162° to 800, then climbing right turn heading 320°, maintain 3000. Thence....

TAKEOFF RUNWAY 34: Climb heading 342° to 1000, then climbing left turn heading 295°, maintain 3000. Thence....

.... on vectors to assigned route/fix. Expect clearance to filed altitude/flight level ten (10) minutes after departure.

\*NOTE: Do not exceed 190 KIAS until established on heading 320°.

NOTE: Radar Required.

NOTE: BAYYS departures expect vectors to BDR VOR/DME or BDR R-054.

NOTE: BIGGY departures expect vectors to SBJ/SBJ R-237.

NOTE: COATE departures expect vectors to SAX VORTAC or SAX R-311.

NOTE: DIXIE departures expect vectors to COL/COL R-192.

NOTE: ELIOT departures expect vectors to SAX R-252. ELIOT may be accessed by all type aircraft requesting a final altitude of 14000 to 16000.

NOTE: GAYEL departures expect vectors to DPK R-320.

NOTE: GREKI departures expect vectors to CMK R-057.

NOTE: HAAYS departures expect vectors to HUU R-145.

NOTE: LANNA departures expect vectors to PTW R-059.

NOTE: MERIT departures expect vectors to LGA R-055.

NOTE: NEION departures expect vectors to LGA R-322.

NOTE: NEWEL departures expect vectors to SAX R-264. NEWEL may be accessed by turbojet aircraft only requesting a final altitude at or above FL180.

NOTE: PARKE departures expect vectors to BWZ/BWZ R-250.

NOTE: SHIPP departures expect vectors to JFK/JFK R-139.

NOTE: WAVEY departures expect vectors to JFK/JFK R-156.

NOTE: WHITE departures expect vectors to COL VOR/DME or COL R-204.

NOTE: ZIMMZ departures expect vectors to SAX R-250. ZIMMZ may be accessed by all type aircraft requesting a final altitude at or above FL180.

### TAKEOFF OBSTACLES NOTES:

Rwy 11: Trees beginning 170' from DER, left and right of centerline, up to 96' AGL/526' MSL. Terrain 140' from DER, 248' left of centerline, 392' MSL.

Rwy 16: Windsock and trees beginning 309' from DER, 187' left of centerline, up to 101' AGL/510' MSL. Trees beginning 1005' from DER, 90' right of centerline, up to 127' AGL/436' MSL. Poles 3433' from DER, 604' left of centerline, up to 105' AGL/510' MSL. Terrain 273' from DER, 515' left of centerline, 0' AGL/387' MSL.

Rwy 29: Trees beginning 6' from DER, 14' right of centerline, up to 103' AGL/593' MSL. Pole 212' from DER, 485' right of centerline, 23' AGL/417' MSL. Pole and trees beginning 425' from DER, 228' left of centerline, up to 108' AGL/488' MSL. Tank 1.2 NM from DER, 751' right of centerline, 86' AGL/599' MSL.

Rwy 34: Windsock 167' from DER, 282' right of centerline, 26' AGL/456' MSL. Trees 612' from DER, 560' left of centerline, up to 81' AGL/491' MSL. Trees beginning 2011' from DER, 751' right of centerline, up to 104' AGL/504' MSL. OL on DME 605' from DER, 263' right of centerline, 20' AGL/454' MSL.

NE-2, 31 MAY 2012 to 28 JUN 2012

NE-2, 31 MAY 2012 to 28 JUN 2012