

LOC I-HOT 111.5 Chan 52	APP CRS 050°	Rwy Idg TDZE Apt Elev	6595 516 540
---	------------------------	-----------------------------	---

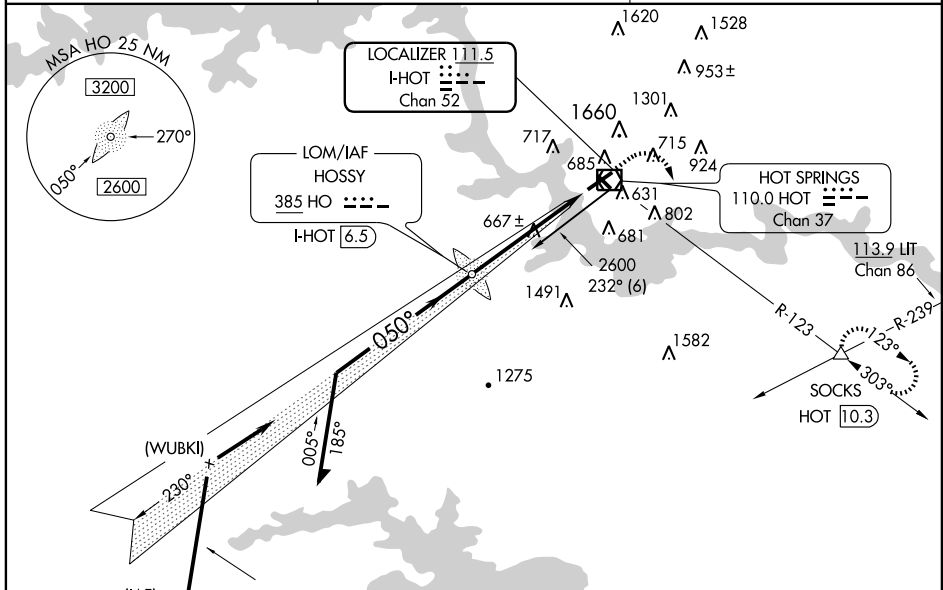
ILS or LOC RWY 5

HOT SPRINGS/MEMORIAL FIELD (HOT)

▼ Circling not authorized northwest of Rwy 5-23. Use I-HOT DME when on localizer course. When local altimeter setting not received, use Adams Field
▲ NA altimeter setting and increase DA 144 feet and all MDA 160 feet, increase S-ILS 5 all Cats visibility ¼ mile, S-LOC Cat C/D ¼ mile, and Circling Cat B ¼ mile, Cat C ¾ mile and Cat D ½ mile. VDP NA with Adams Field altimeter setting. Circling to Rwy 31 NA at night.

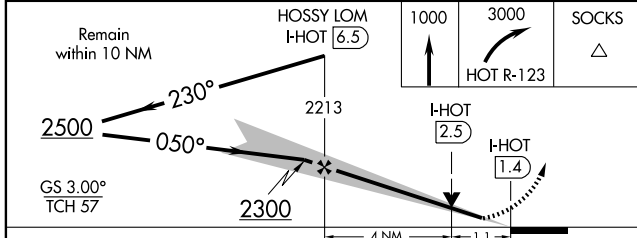
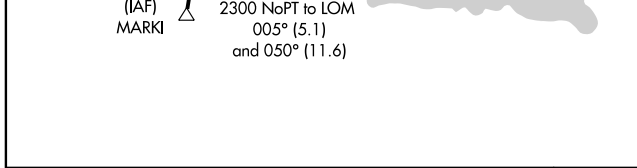
MALSR MISSED APPROACH: Climb to 1000 then climbing right turn to 3000 via HOT R-123 to SOCKS Int/HOT 10.3 DME and hold.

ASOS 119.925	MEMPHIS CENTER 128.475 377.15	UNICOM 123.0 (CTAF)
------------------------	---	-------------------------------

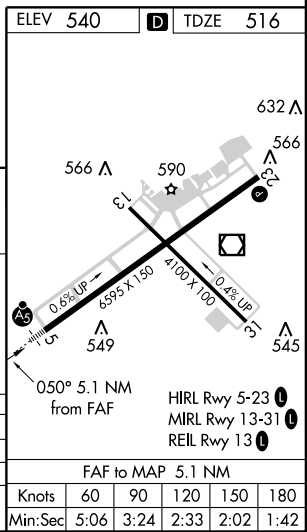


SC-1, 31 MAY 2012 to 28 JUN 2012

SC-1, 31 MAY 2012 to 28 JUN 2012



CATEGORY	A	B	C	D
	716-½ 200 (200-½)			
S-ILS 5	940-½ 424 (400-½) 940-¾ 424 (400-¾)			
S-LOC 5	1060-1 520 (600-1)	1140-1 600 (600-1)	1140-1½ 600 (600-1½)	1140-2 600 (600-2)




FAF to MAP 5.1 NM					
Knots	60	90	120	150	180
Min:Sec	5:06	3:24	2:33	2:02	1:42

APP CRS	Rwy Idg	6595
050°	TDZE	516
	Apt Elev	540

RNAV (GPS) RWY 5


HOT SPRINGS/MEMORIAL FIELD (HOT)

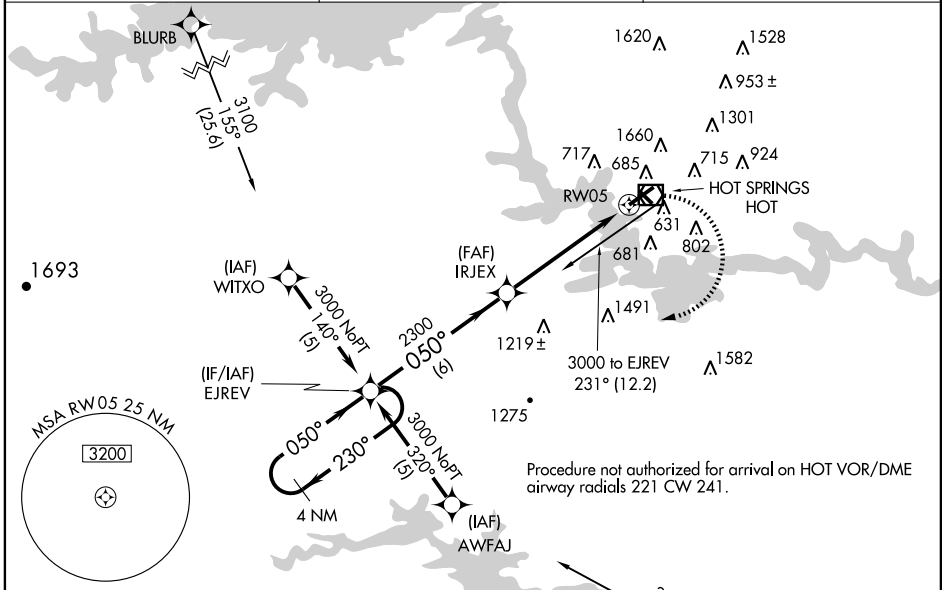
▼ DME/DME RNP-0.3 NA. Circling not authorized northwest of Rwy 5-23. For inoperative MALS, increase LNAV Cat D visibility to 1 1/4 mile. When local altimeter setting not received, use Adams Field altimeter setting and increase all MDA 160 feet, increase LNAV Cat C and D Visibility 1/4 mile and Circling Cat B visibility 1/4 mile, Cat C 3/4 mile and Cat D 1/2 mile. VDP NA with Adams Field altimeter setting. Circling to Rwy 31 NA at night.

MALS
 MISSED APPROACH: Climbing right turn to 3000 direct EJREV and hold.

ASOS
119.925

MEMPHIS CENTER
128.475 377.15

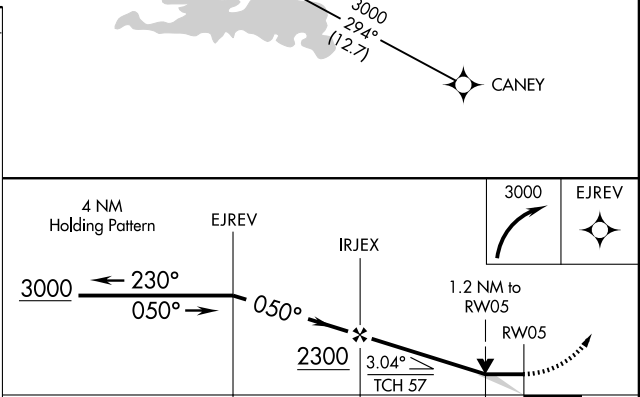
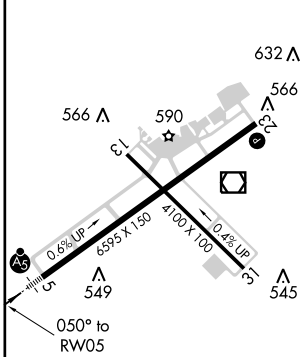
UNICOM
123.0 (CTAF) 



SC-1, 31 MAY 2012 to 28 JUN 2012

SC-1, 31 MAY 2012 to 28 JUN 2012

ELEV 540	D	TDZE 516
----------	----------	----------



	A	B	C	D
CATEGORY	A	B	C	D
LNAV MDA	940-1/2	424 (400-1/2)	940-3/4 424 (400-3/4)	940-1 424 (400-1)
CIRCLING	1060-1 520 (600-1)	1140-1 600 (600-1)	1140-1 1/2 600 (600-1 1/2)	1140-2 600 (600-2)

VOR/DME HOT 110.0 Chan 37	APP CRS 058°	Rwy Idg 6595 TDZE 516 Apt Elev 540
---	------------------------	---

VOR Y RWY 5

HOT SPRINGS/MEMORIAL FIELD (HOT)

⚠ Circling not authorized northwest of Rwy 5-23. When local altimeter setting not received, use Adams Field altimeter setting. Inoperative table does not apply to Cat. A. For inoperative MALS, increase S-5 Cat. B visibility to 1½. Circling to Rwy 31 NA at night.

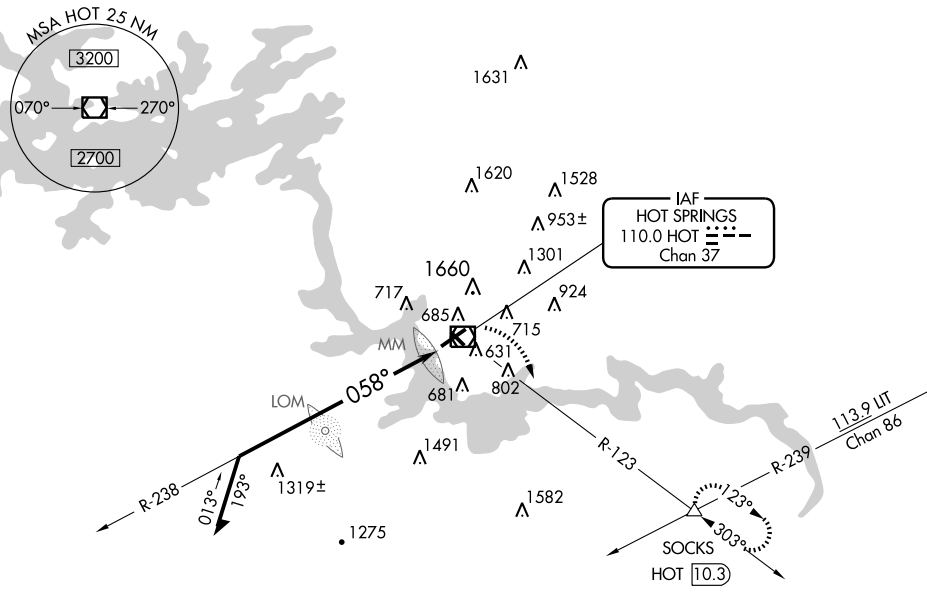
MALS
AS

MISSED APPROACH: Climbing right turn to 3000 via HOT R-123 to SOCKS Int/HOT 10.3 DME and hold.

ASOS
119.925

MEMPHIS CENTER
128.475 377.15

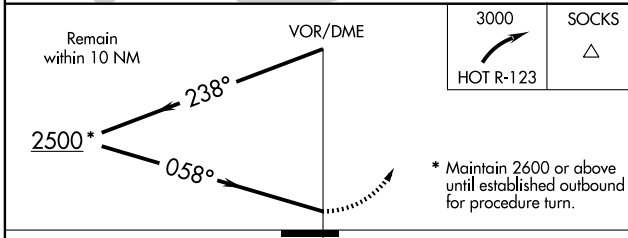
UNICOM
123.0 (CTAF) 0



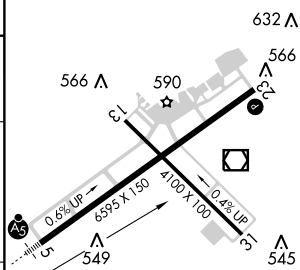
SC-1, 31 MAY 2012 to 28 JUN 2012

SC-1, 31 MAY 2012 to 28 JUN 2012

ELEV 540	D	TDZE 516
----------	----------	----------



* Maintain 2600 or above until established outbound for procedure turn.



CATEGORY	A	B	C	D
S-5	1620-1¼	1104 (1100-1¼)	1620-2½	1104 (1100-2½)
CIRCLING	1620-1¼	1620-1½	1620-3	1080 (1100-3)
	1080 (1100-1¼)	1080 (1100-1½)		
ADAMS FIELD ALTIMETER SETTING MINIMUMS				
S-5	1780-1¼	1264 (1300-1¼)	1780-2½	1264 (1300-2½)
CIRCLING	1780-1¼	1780-1½	1780-3	1240 (1300-3)
	1240 (1300-1¼)	1240 (1300-1½)		


HIRL Rwy 5-23 **0**
MIRL Rwy 13-31 **0**
REIL Rwy 13 **0**

VOR/DME HOT 110.0 Chan 37	APP CRS 058°	Rwy Idg 6595 TDZE 516 Apt Elev 540
--	------------------------	---

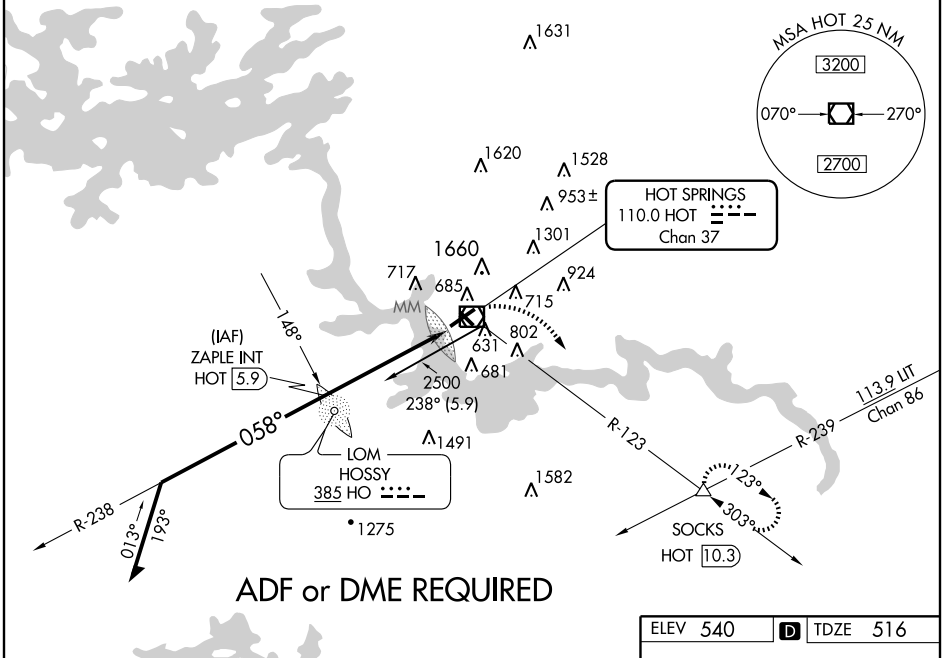
VOR Z RWY 5

HOT SPRINGS/MEMORIAL FIELD (HOT)

⚠ Circling not authorized northwest of Rwy 5-23. When local altimeter setting not received, use Adams Field altimeter setting. Memorial Field altimeter setting minimums: For inoperative MALSRS, increase Cat D visibility to 1½. VDP NA with Adams Field altimeter setting. Circling to Rwy 31 NA at night.

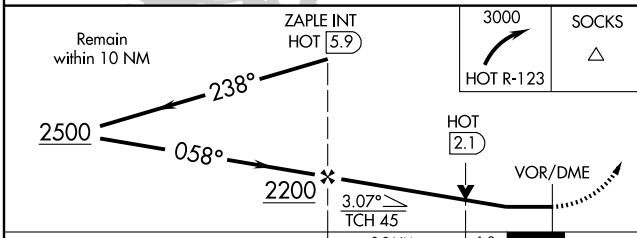
MALSRS
 MISSED APPROACH: Climb right turn to 3000 via HOT R-123 to SOCKS INT/HOT 10.3 DME and hold.

ASOS 119.925	MEMPHIS CENTER 128.475 377.15	UNICOM 123.0 (CTAF) 0
------------------------	---	---------------------------------

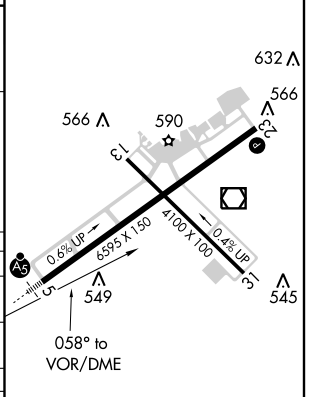


SC-1, 31 MAY 2012 to 28 JUN 2012

SC-1, 31 MAY 2012 to 28 JUN 2012



ELEV 540	D TDZE 516
----------	-------------------



CATEGORY	A	B	C	D
S-5	940-½ 424 (400-½)		940-¾ 424 (400-¾)	940-1 424 (400-1)
CIRCLING	1060-1 520 (600-1)	1140-1 600 (600-1)	1140-1½ 600 (600-1½)	1140-2 600 (600-2)
ADAMS FIELD ALTIMETER SETTING MINIMUMS				
S-5	1100-½ 584 (600-½)		1100-1 584 (600-1)	1100-1¼ 584 (600-1¼)
CIRCLING	1220-1 680 (700-1)	1300-1¼ 760 (800-1¼)	1300-2¼ 760 (800-2¼)	1300-2½ 760 (800-2½)

HIRL Rwy 5-23 **0**
 MIRL Rwy 13-31 **0**
 REIL Rwy 13 **0**