

LOC/DME I-HON 110.3 Chan 40	APP CRS 121°	Rwy Idg 7201 TDZE 1289 Apt Elev 1289
---	------------------------	---

ILS or LOC RWY 12

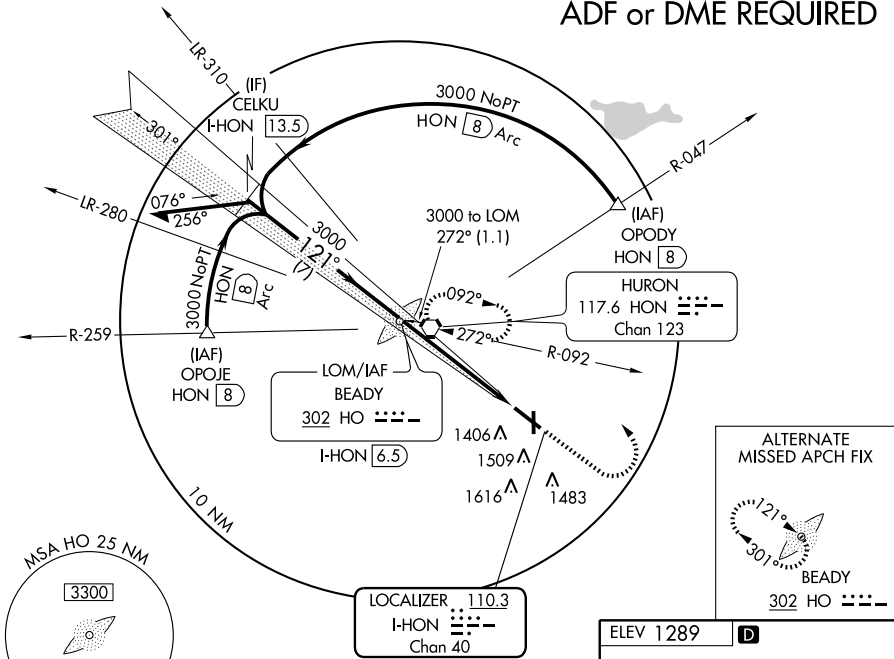
HURON RGNL (HON)

▼ For inoperative MALSR when using Mitchell altimeter setting increase S-ILS 12 all cats visibility to 1 mile. When local altimeter setting not received, use Mitchell Muni altimeter setting and ▲ increase all DA 89 feet and all MDA 100 feet, increase S-LOC 12 Cats C and D visibility ¼ mile and Circling Cats C and D ½ mile. VDP NA when using Mitchell altimeter setting.

MALSR MISSED APPROACH: Climb to 3000 then left turn direct HON VORTAC and hold.

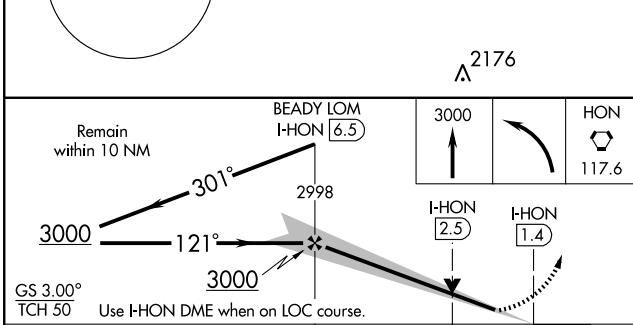
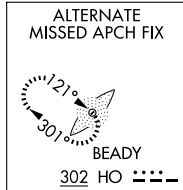
ASOS 118.125	MINNEAPOLIS CENTER 126.25 339.8	HURON RADIO 123.6 (CTAF)	UNICOM 123.0
------------------------	---	------------------------------------	------------------------

ADF or DME REQUIRED

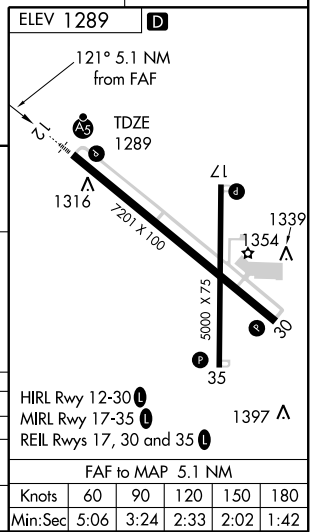


NC-1, 31 MAY 2012 to 28 JUN 2012

NC-1, 31 MAY 2012 to 28 JUN 2012



CATEGORY	A	B	C	D
S-ILS 12		1489-½ 200 (200-½)		
S-LOC 12		1680-½ 391 (400-½)		1680-¾ 391 (400-¾)
CIRCLING	1820-1 531 (600-1)	1820-1½ 531 (600-1½)	1980-2¼ 691 (700-2¼)	



LOC/DME BC RWY 30

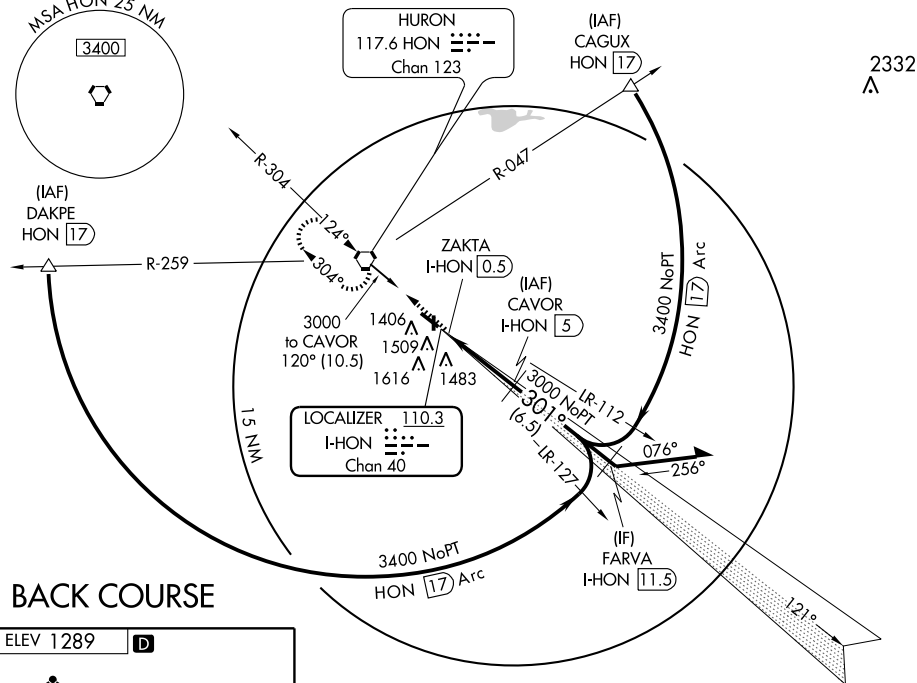
HURON RGNL (HON)

LOC/DME I-HON 110.3 Chan 40	APP CRS 301°	Rwy Idg TDZE Apt Elev	7201 1286 1289
---	------------------------	-----------------------------	---

⚠ If local altimeter setting not received, use Mitchell Muni altimeter setting and increase all MDAs 100 feet.

⚠ MISSED APPROACH: Climb to 3000 direct HON VORTAC and hold.

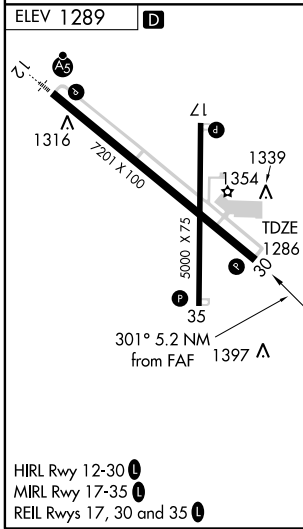
ASOS 118.125	MINNEAPOLIS CENTER 126.25 339.8	HURON RADIO 123.6 (CTAF)	UNICOM 123.0
------------------------	---	------------------------------------	------------------------



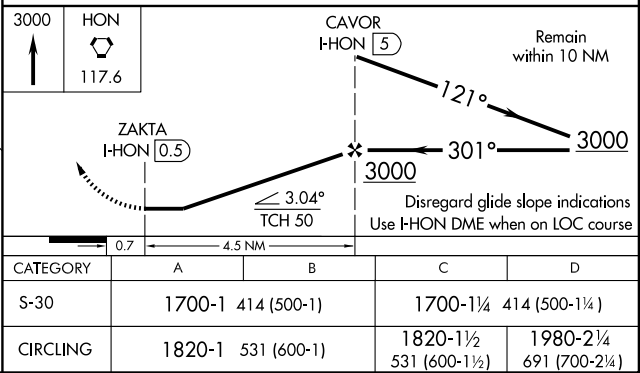
NC-1, 31 MAY 2012 to 28 JUN 2012

NC-1, 31 MAY 2012 to 28 JUN 2012

BACK COURSE



DME REQUIRED




RNAV (GPS) RWY 12

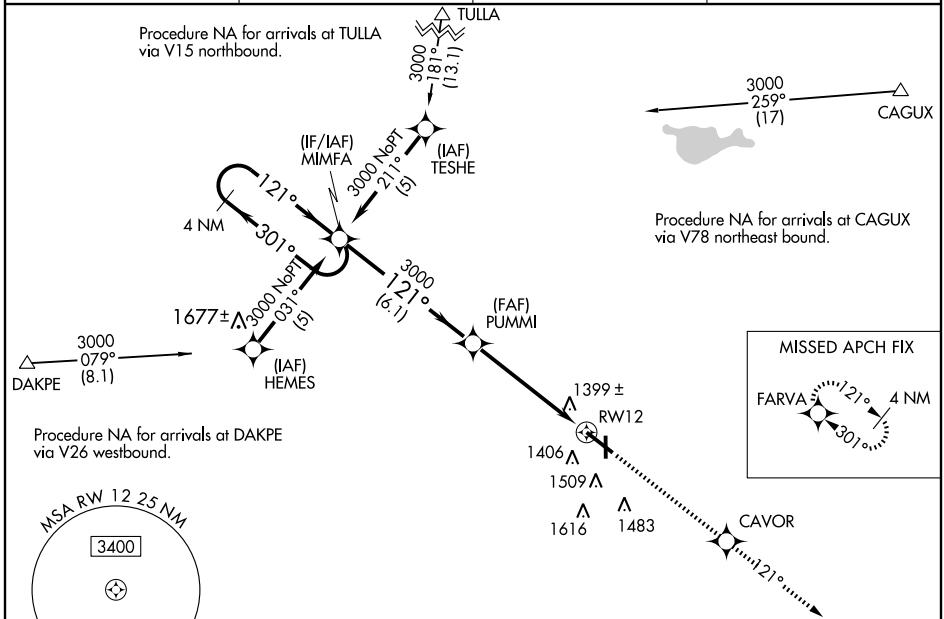
HURON RGNL (HON)

WAAS CH 70314 W12A	APP CRS 121°	Rwy Idg TDZE 1289 Apt Elev 1289	7201
--	------------------------	---	-------------

⚠ For uncompensated Baro-VNAV systems, LNAV/VNAV NA below -17°C (2°F) or above 46°C (114°F). DME/DME RNP-0.3 NA. Baro-VNAV and VDP NA when using Mitchell Muni altimeter setting. When local altimeter setting not received, use Mitchell Muni altimeter setting and increase all DA 89 feet and all MDA 100 feet. Increase LNAV/VNAV all Cats, LNAV and Circling Cat C/D visibility ¼ mile. For inoperative MALSR when using Mitchell Muni altimeter setting increase LPV all Cats visibility to 1 mile.

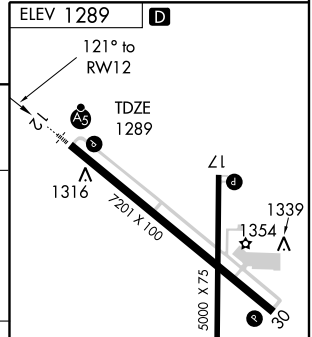
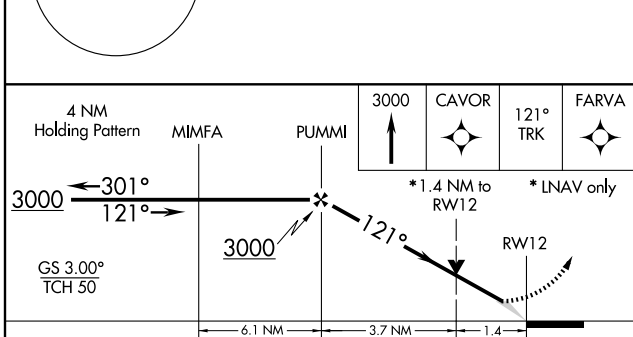
MALSR

MISSED APPROACH:
Climb to 3000 direct
CAVOR and via 121°
track to FARVA and hold.

ASOS 118.125	MINNEAPOLIS CENTER 126.25 339.8	HURON RADIO 123.6 (CTAF)	UNICOM 123.0
------------------------	---	------------------------------------	------------------------



NC-1, 31 MAY 2012 to 28 JUN 2012

NC-1, 31 MAY 2012 to 28 JUN 2012



CATEGORY	A	B	C	D
LPV DA	1489-½ 200 (200-½)			
LNAV/VNAV DA	1699-1	410 (500-1)	1699-1½ 410 (500-1½)	
LNAV MDA	1780-½ 491 (500-½)	1780-¾ 491 (500-¾)	1780-1 491 (500-1)	1780-1 491 (500-1)
CIRCLING	1820-1 531 (600-1)	1820-1½ 531 (600-1½)	1980-2¼ 691 (700-2¼)	

HIRL Rwy 12-30 **Ⓛ**
MIRL Rwy 17-35 **Ⓛ**
REIL Rws 17, 30 and 35 **Ⓛ**

WAAS CH 77514 W30A	APP CRS 301°	Rwy Idg 7201 TDZE 1286 Apt Elev 1289
--	------------------------	---

RNAV (GPS) RWY 30

HURON RGNL (HON)

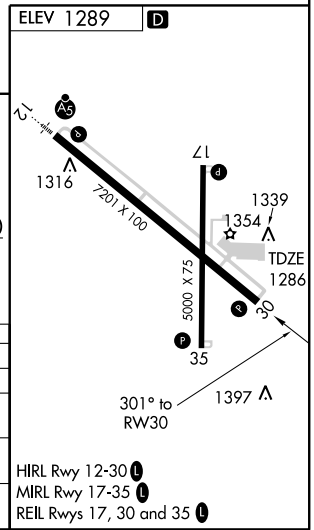
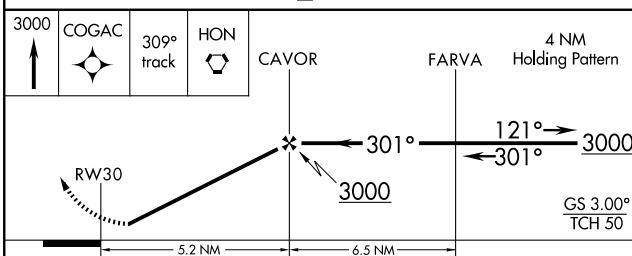
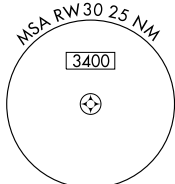
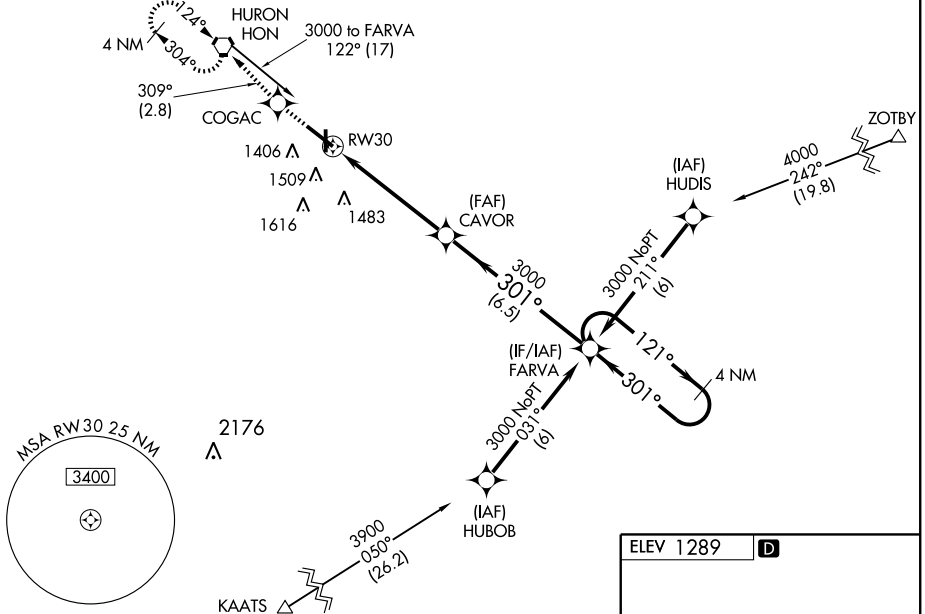
▼ DME/DME RNP - 0.3 NA. When local altimeter setting not received, use Mitchell Muni altimeter setting and increase all DA 89 feet and all MDA 100 feet, increase LPV and LNAV/VNAV all Cats C/D, and Circling Cats C/D visibility ¼ mile. For uncompensated Baro-VNAV systems, LNAV/VNAV NA below -17°C (2°F) or above 46°C (114°F). Baro-VNAV NA when using Mitchell Muni altimeter setting.

MISSED APPROACH:
Climb to 3000 direct COGAC and via 309° track to HON VORTAC and hold.

ASOS 118.125	MINNEAPOLIS CENTER 126.25 339.8	HURON RADIO 123.6 (CTAF)	UNICOM 123.0 U
------------------------	---	------------------------------------	---------------------------------

NC-1, 31 MAY 2012 to 28 JUN 2012

NC-1, 31 MAY 2012 to 28 JUN 2012



CATEGORY	A	B	C	D
LPV DA	1559-1 273 (300-1)			
LNAV/VNAV DA	1721-1½ 435 (500-1½)			
LNAV MDA	1760-1 474 (500-1)	1760-1½ 474 (500-1½)	1760-1½ 474 (500-1½)	1760-1½ 474 (500-1½)
CIRCLING	1820-1 531 (600-1)	1820-1½ 531 (600-1½)	1820-1½ 531 (600-1½)	1980-2¼ 691 (700-2¼)


HIRL Rwy 12-30 **U**
MIRL Rwy 17-35 **U**
REIL Rws 17, 30 and 35 **U**

VORTAC HON 117.6 Chan 123	APP CRS 124°	Rwy Idg TDZE 1289 Apt Elev 1289	7201
---	------------------------	---	-------------

VOR RWY 12

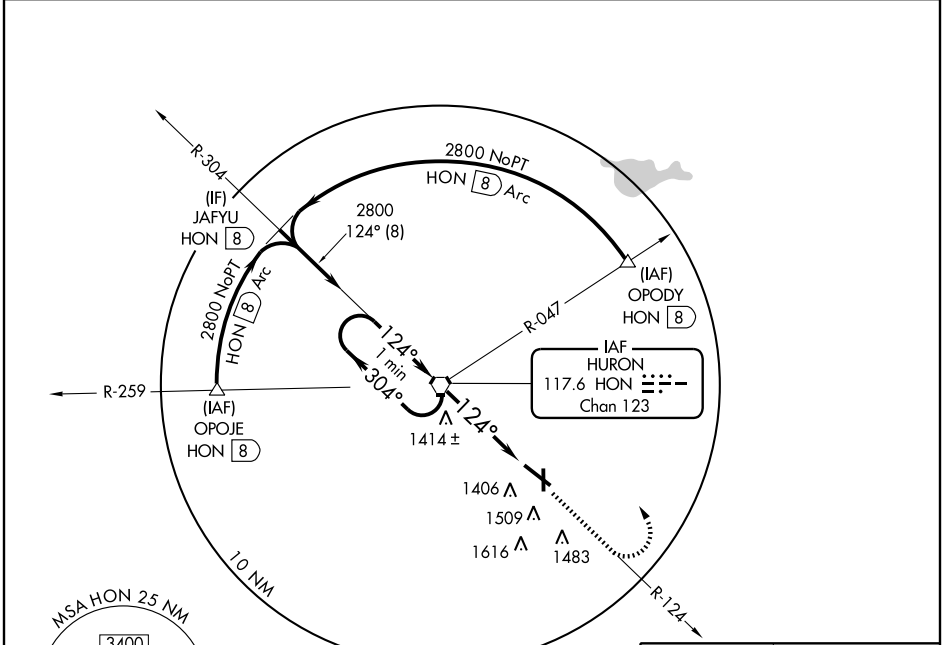
HURON RGNL (HON)

⚠ When local altimeter setting not received, use Mitchell Muni altimeter setting and increase all MDA 100 feet, increase S-12 Cat C visibility ¼ mile and circling Cats C and D ¼ mile. For inoperative MALS R increase S-12 Cat D visibility 1¼ mile. VDP NA when using Mitchell Muni altimeter setting.

MALS R 

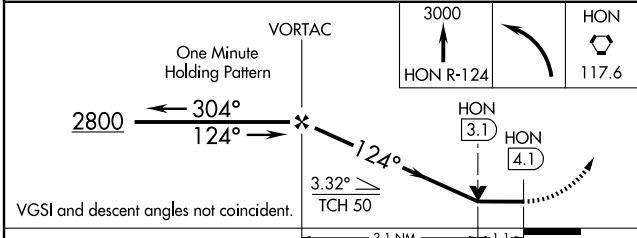
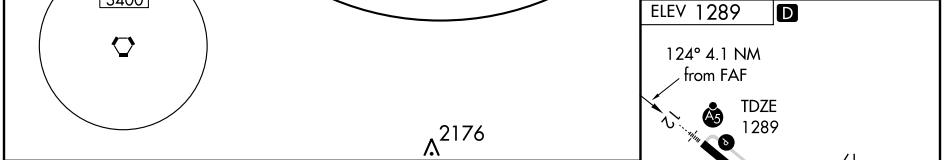
MISSED APPROACH: Climb to 3000 via HON VORTAC R-124 then left turn direct HON VORTAC and hold.

ASOS 118,125	MINNEAPOLIS CENTER 126.25 339.8	HURON RADIO 123.6 (CTAF)	UNICOM 123.0
------------------------	---	------------------------------------	------------------------



NC-1, 31 MAY 2012 to 28 JUN 2012

NC-1, 31 MAY 2012 to 28 JUN 2012



CATEGORY	A	B	C	D
S-12	1680-1/2	391 (400-1/2)		1680-1 391 (400-1)
CIRCLING	1820-1	531 (600-1)	1820-1 1/2 531 (600-1 1/2)	1980-2 1/4 691 (700-2 1/4)

FAF to MAP 4.1 NM					
Knots	60	90	120	150	180
Min:Sec	4:06	2:44	2:03	1:38	1:22