

CLARR TWO ARRIVAL

LAS VEGAS APP CON
 125.025 282.2
 LAS VEGAS TOWER
 118.75 257.8 (Rwy 1L/19R, 1R/19L)
 119.9 257.8 (Rwy 7L/25R, 7R/25L)
 NORTH LAS VEGAS TOWER*
 125.7 360.75
 LAS VEGAS ATIS
 132.4
 NORTH LAS VEGAS ATIS
 118.05

LOCALIZER 110.3
 I-LAS
 Chan 40

LAS VEGAS
 116.9 LAS
 Chan 116

NORTH LAS VEGAS

LOCALIZER 111.75
 I-RLE

RWY 25R
 255°
 RWY 25L

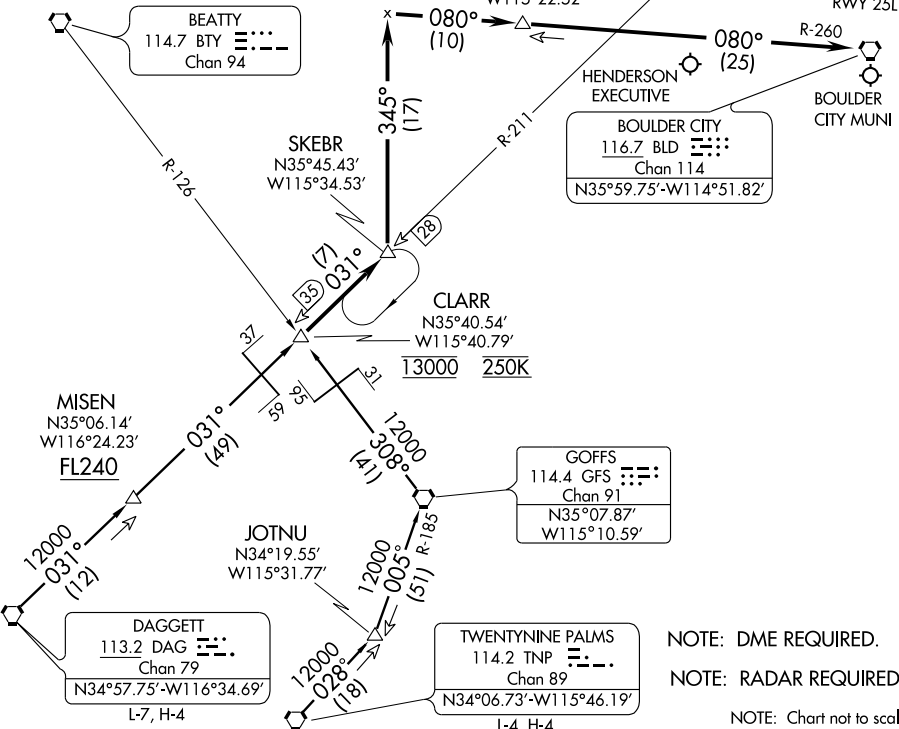
(ISSAR)
 N36°02.66'
 W115°34.53'

IPUMY
 N36°01.86'
 W115°22.52'

McCARRAN INTL

BEATTY
 114.7 BTY
 Chan 94

BOULDER CITY
 116.7 BLD
 Chan 114
 N35°59.75'-W114°51.82'



NOTE: DME REQUIRED.
 NOTE: RADAR REQUIRED.
 NOTE: Chart not to scale.

DAGGETT TRANSITION (DAG.CLARR2): From over DAG VORTAC via DAG R-031 and LAS R-211 to CLARR INT. Thence. . .

TWENTYNINE PALMS TRANSITION (TNP.CLARR2): From over TNP VORTAC via TNP R-028 to JOTNU INT, then via GFS R-185 to GFS VORTAC, then via GFS R-308 and BTY R-126 to CLARR INT. Thence. . .

...From over CLARR INT via LAS R-211 to SKEBR INT. Thence. . .

LANDING MC CARRAN INTL: Via heading 345° to intercept the BLD R-260 to BLD VORTAC. Rws 1L/R, 7L/R, and 19L/R expect radar vectors for visual approach prior to BLD VORTAC. Rws 25L/R expect ILS approach procedure.

LANDING NORTH LAS VEGAS, HENDERSON EXECUTIVE, and BOULDER CITY MUNI: After SKEBR INT expect radar vectors to airport.

CLARR TWO ARRIVAL

SW-4, 31 MAY 2012 to 28 JUN 2012

SW-4, 31 MAY 2012 to 28 JUN 2012

FUZZY SEVEN ARRIVAL

ST-662 (FAA)

LAS VEGAS, NEVADA

LAS VEGAS APP CON
125.025 379.15
LAS VEGAS TOWER
118.75 257.8 (Rwy 1L/19R, 1R/19L)
119.9 257.8 (Rwy 7L/25R, 7R/25L)
NORTH LAS VEGAS TOWER*
125.7 360.75
LAS VEGAS ATIS
132.4
NORTH LAS VEGAS ATIS
118.05

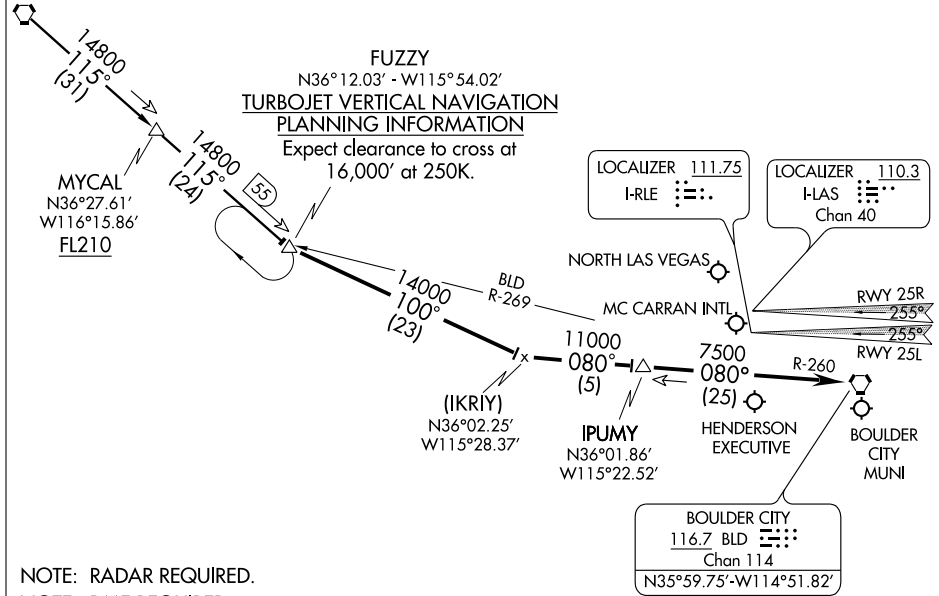
BEATTY
114.7 BTY
Chan 94
N36°48.04'-W116°44.86'
L-9, H-4

FUZZY
N36°12.03' - W115°54.02'
**TURBOJET VERTICAL NAVIGATION
PLANNING INFORMATION**
Expect clearance to cross at
16,000' at 250K.

MYCAL
N36°27.61'
W116°15.86'
FL210

LOCALIZER 111.75
I-RLE

LOCALIZER 110.3
I-LAS
Chan 40



SW-4, 31 MAY 2012 to 28 JUN 2012

SW-4, 31 MAY 2012 to 28 JUN 2012

NOTE: RADAR REQUIRED.
NOTE: DME REQUIRED.
NOTE: Chart not to scale.

BEATTY TRANSITION (BTY.FUZZY7): From over BTY VORTAC via BTY R-115 to FUZZY INT. Thence . . .
. . . From over FUZZY via heading 100° to intercept BLD R-260 to BLD VORTAC.

LANDING MC CARRAN INTL RWYS 1L/R, 7L/R, and 19L/R: Expect vectors for visual approach prior to BLD VORTAC.

LANDING MC CARRAN INTL RWYS 25L/R: Expect ILS approach.

LANDING NORTH LAS VEGAS, HENDERSON EXECUTIVE, and BOULDER CITY MUNI :
After IPUMY, expect radar vectors to airport.

FUZZY SEVEN ARRIVAL

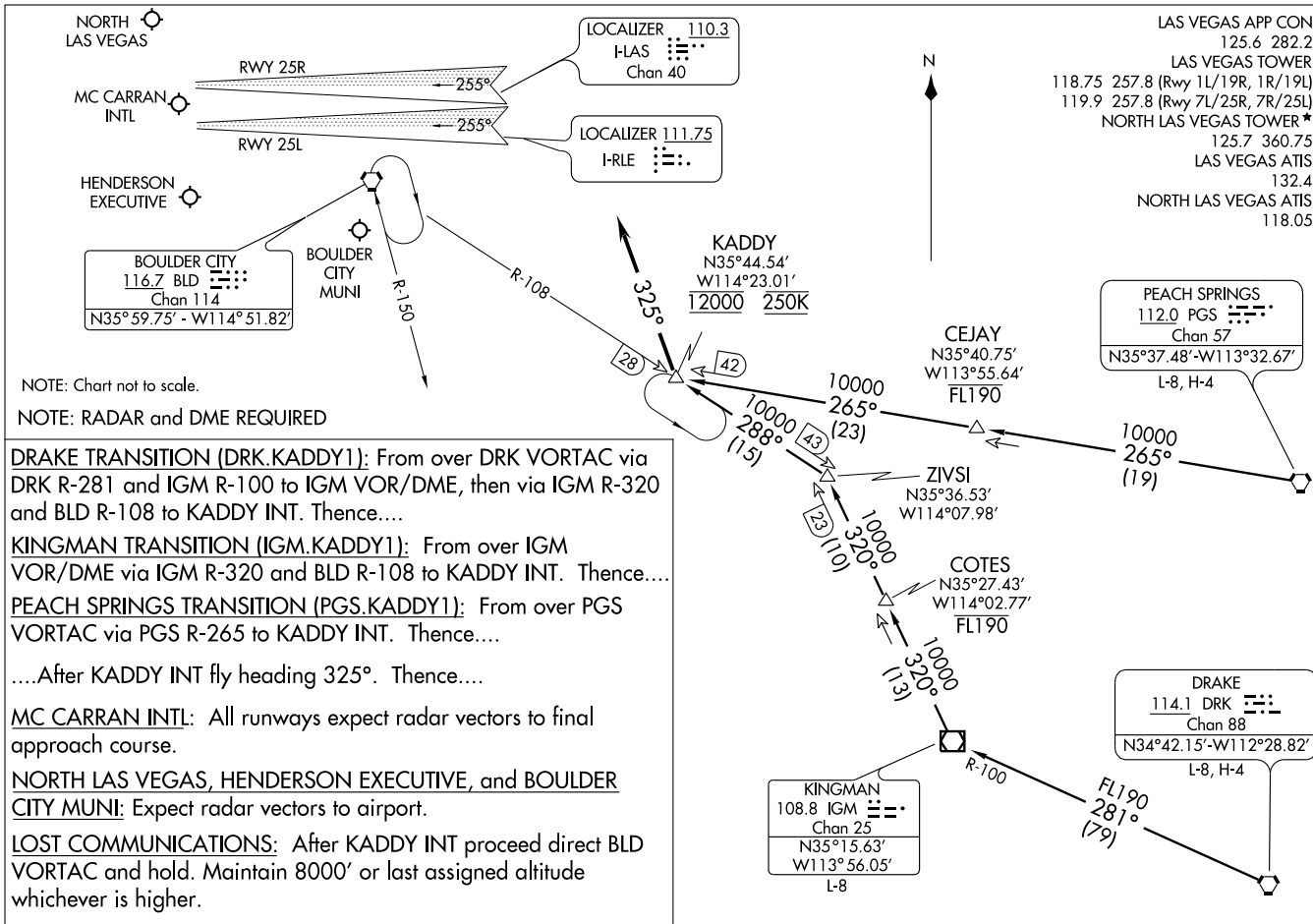
LAS VEGAS, NEVADA

KADDY ONE ARRIVAL
(KADDY.KADDY1) 09351

(KADDY.KADDY1) 09351
KADDY ONE ARRIVAL

ST-662 (FAA)

LAS VEGAS, NEVADA



LAS VEGAS, NEVADA

LAS VEGAS APP CON
125.025 379.15
LAS VEGAS TOWER
118.75 257.8 (Rwy 1L/19R, 1R/19L)
119.9 257.8 (Rwy 7L/25R, 7R/25L)
NORTH LAS VEGAS TOWER*
125.7 360.75
LAS VEGAS ATIS
132.4
NORTH LAS VEGAS ATIS
118.05

MILFORD
112.1 MLF
Chan 58
N38°21.62' - W113°00.79'
L-9, H-3

BRYCE CANYON
112.8 BCE
Chan 75
N37°41.35' - W112°18.23'
L-9, H-3

DOVE CREEK
114.6 DVC
Chan 93
N37°48.53' - W108°55.88'
L-9, H-3

MORMON MESA
114.3 MMM
Chan 90

HOLDM
N36°49.12' - W113°32.68'

LUXOR
N36°23.69' - W114°28.83'
Turbojets cross at
12000' at 250K

KSINO
N36°34.54' - W114°05.08'

BETHL
N36°53.07' - W112°26.43'

PAGE
117.6 PGA
Chan 123

LOCALIZER 110.3
I-LAS
Chan 40

NORTH LAS VEGAS

BAMAA
N36°08.04' - W114°43.89'
8000 210K

LOCALIZER 111.75
I-RLE

MC CARRAN RWY 25L
INTL
HENDERSON EXECUTIVE
BOULDER CITY MUNI

BOULDER CITY
116.7 BLD
Chan 114
N35°59.75' - W114°51.82'

LAS VEGAS
116.9 LAS
Chan 116
N36°04.78' - W115°09.59'



(NARRATIVE ON FOLLOWING PAGE)

NOTE: RADAR and DME REQUIRED.

NOTE: Chart not to scale.

ARRIVAL DESCRIPTION

BETHL TRANSITION (BETHL.LUXOR2): From over BETHL INT via PGA R-254 and MMM R-069 to HOLDM INT, then via LAS R-045 to LUXOR INT. Thence. . . .

BRYCE CANYON TRANSITION (BCE.LUXOR2): From over BCE VORTAC via BCE R-218 and LAS R-045 to LUXOR INT. Thence. . . .

DOVE CREEK TRANSITION (DVC.LUXOR2): From over DVC VORTAC via DVC R-239 and LAS R-054 to BETHL INT, then via PGA R-254 and MMM R-069 to HOLDM INT, then via LAS R-045 to LUXOR INT. Thence. . . .

MILFORD TRANSITION (MLF.LUXOR2): From over MLF VORTAC via MLF R-190 and LAS R-045 to LUXOR INT. Thence. . . .

. . . .From over LUXOR INT via BLD R-023 to BAMAA INT, thence via LAS R-066 to LAS VORTAC. Thence. . . .

LANDING MC CARRAN INTL: All runways expect radar vectors to final approach course.

LANDING NORTH LAS VEGAS, HENDERSON EXECUTIVE, and BOULDER CITY MUNI: Expect radar vectors to airport.

LOST COMMUNICATIONS: After LAS VORTAC proceed direct BLD VORTAC and hold. Maintain 8000' or last assigned altitude whichever is higher.

SW-4, 31 MAY 2012 to 28 JUN 2012

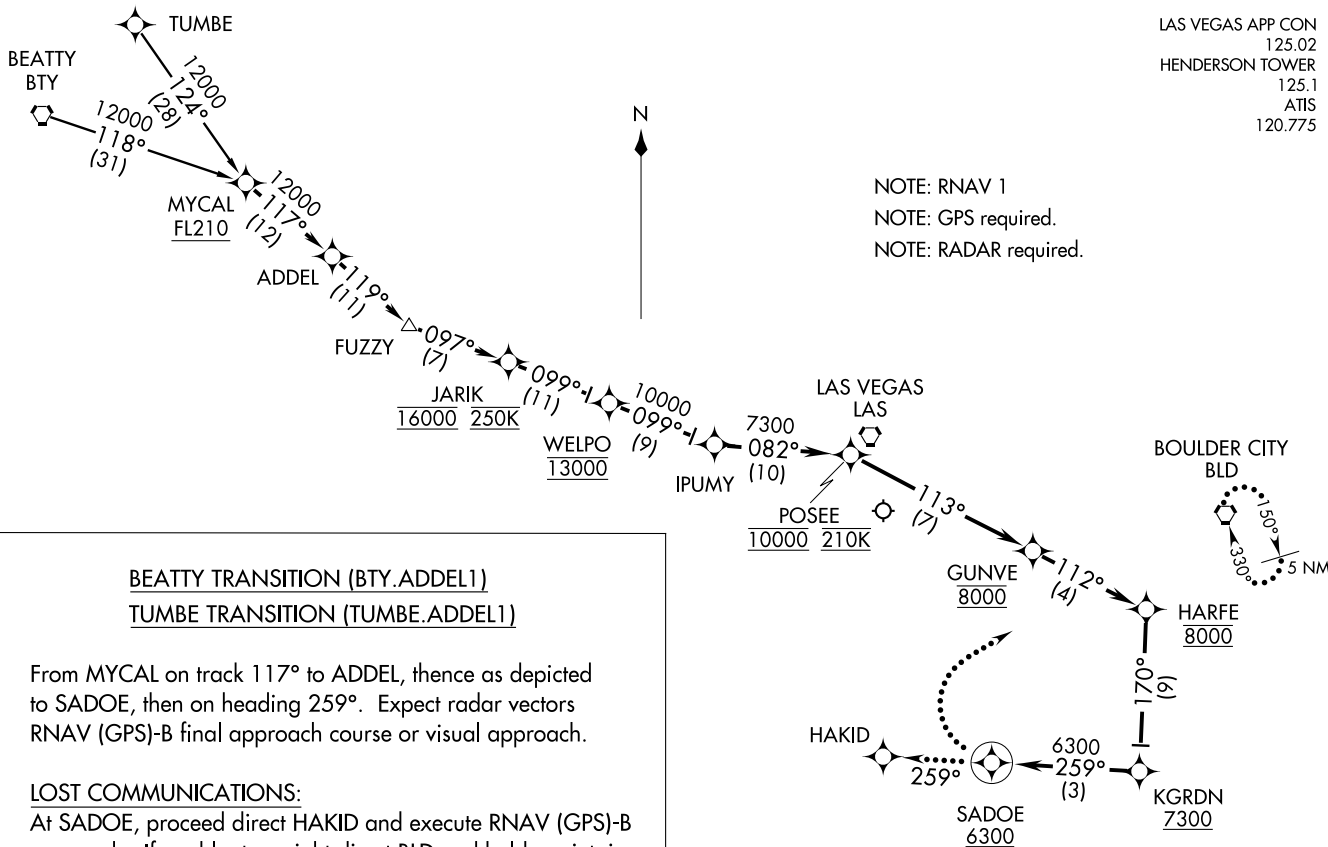
SW-4, 31 MAY 2012 to 28 JUN 2012

ADDEL ONE ARRIVAL (RNAV)
(ADDEL.ADDEL1) 12040

(ADDEL.ADDEL1) 12040
ADDEL ONE ARRIVAL (RNAV)

LAS VEGAS APP CON 125.02
HENDERSON TOWER 125.1
ATIS 120.775

NOTE: RNAV 1
NOTE: GPS required.
NOTE: RADAR required.



BEATTY TRANSITION (BTY.ADDEL1)
TUMBE TRANSITION (TUMBE.ADDEL1)

From MYCAL on track 117° to ADDEL, thence as depicted to SADOE, then on heading 259°. Expect radar vectors RNAV (GPS)-B final approach course or visual approach.

LOST COMMUNICATIONS:

At SADOE, proceed direct HAKID and execute RNAV (GPS)-B approach. If unable, turn right direct BLD and hold, maintain 7000'.

NOTE: Chart not to scale.

ST-6514 (FAA)

HENDERSON EXECUTIVE
LAS VEGAS, NEVADA

LAS VEGAS, NEVADA
HENDERSON EXECUTIVE

JOMIX ONE ARRIVAL (RNAV)

LAS VEGAS APP CON
125.9
HENDERSON TOWER
125.1
ATIS
120.775

LAS VEGAS
LAS

BOULDER CITY
BLD

HAKID

NOTE: RNAV 1
NOTE: GPS required.
NOTE: RADAR required.

6300 259°
(3)

SADOE
6300

KGRDN
7300

7100 330°
(20)

JOMIX
10000 250K

DAGGETT
DAG

9000 087°
(63)

7200 360°
(15)

USCUP

7200 024°
(31)

ZELMA

7200 007°
(29)

JOTNU

7200 030°
(18)

TWENTYNINE
PALMS
TNP

DAGGETT TRANSITION (DAG.JOMIX1)
TWENTYNINE PALMS TRANSITION (TNP.JOMIX1)
ZELMA TRANSITION (ZELMA.JOMIX1)

From JOMIX on track 330° to cross KGRDN at or above 7300, then on track 259° to SADOE, then on heading 259°. Expect radar vectors RNAV (GPS)-B final approach course or visual approach.

LOST COMMUNICATIONS:
At SADOE, proceed direct HAKID and execute RNAV (GPS)-B approach.
If unable, turn right direct BLD and hold, maintain 7000'.

NOTE: Chart not to scale.

SW-4, 31 MAY 2012 to 28 JUN 2012

SW-4, 31 MAY 2012 to 28 JUN 2012

(IGM.KNGMN2) 11237
KNGMN TWO ARRIVAL (RNAV)

ST-6514 (FAA)

HENDERSON EXECUTIVE
LAS VEGAS, NEVADA

ATIS 120.775
LAS VEGAS APP CON 125.6
* HENDERSON TOWER 125.1



LAS VEGAS
LAS

BOULDER CITY
BLD

HAKID

SADOE
6300

KGRDN
7300

LYNSY
11000 250K

9200
288°
(47)

KINGMAN
IGM

NOTE: RNAV 1
NOTE: GPS required.
NOTE: RADAR required.

From IGM on track 288° to cross LYNSY at 11000' at 250 KTS, thence as depicted to SADOE, then on heading 259°.
Expect radar vectors RNAV (GPS)-B final approach course or visual approach.

LOST COMMUNICATIONS:

At SADOE, proceed direct HAKID and execute RNAV (GPS)-B approach. If unable, turn right direct BLD and hold, maintain 7000'.

NOTE: Chart not to scale.

KNGMN TWO ARRIVAL (RNAV)
(IGM.KNGMN2) 11237

HENDERSON EXECUTIVE
LAS VEGAS, NEVADA

LAS VEGAS APP CON
 125.6
 HENDERSON TOWER
 125.1
 ATIS
 120.775

NOTE: RNAV 1
 NOTE: GPS required.
 NOTE: RADAR required.



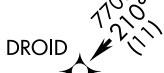
LAS VEGAS
 LAS



BOULDER CITY
 BLD



DROID



GRUNY



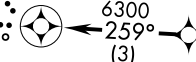
HAKID



SADOE
6300



KGRDN
7300



BRYCE CANYON TRANSITION (BCE.NOOTN1)
CEDAR CITY TRANSITION (CDC.NOOTN1)
DOVE CREEK TRANSITION (DVC.NOOTN1)

From NOOTN on track 236° to SHABI, thence as depicted to SADOE, then on heading 259°. Expect radar vectors RNAV (GPS)-B final approach course or visual approach.

LOST COMMUNICATIONS:
 At SADOE, proceed direct HAKID and execute RNAV (GPS)-B approach. If unable, turn right direct BLD and hold, maintain 7000'.

CEDAR CITY
 CDC



BRYCE CANYON
 BCE



DOVE CREEK
 DVC



SHABI



MORR
13000 250K



NOOTN



NOTE: Chart not to scale.