

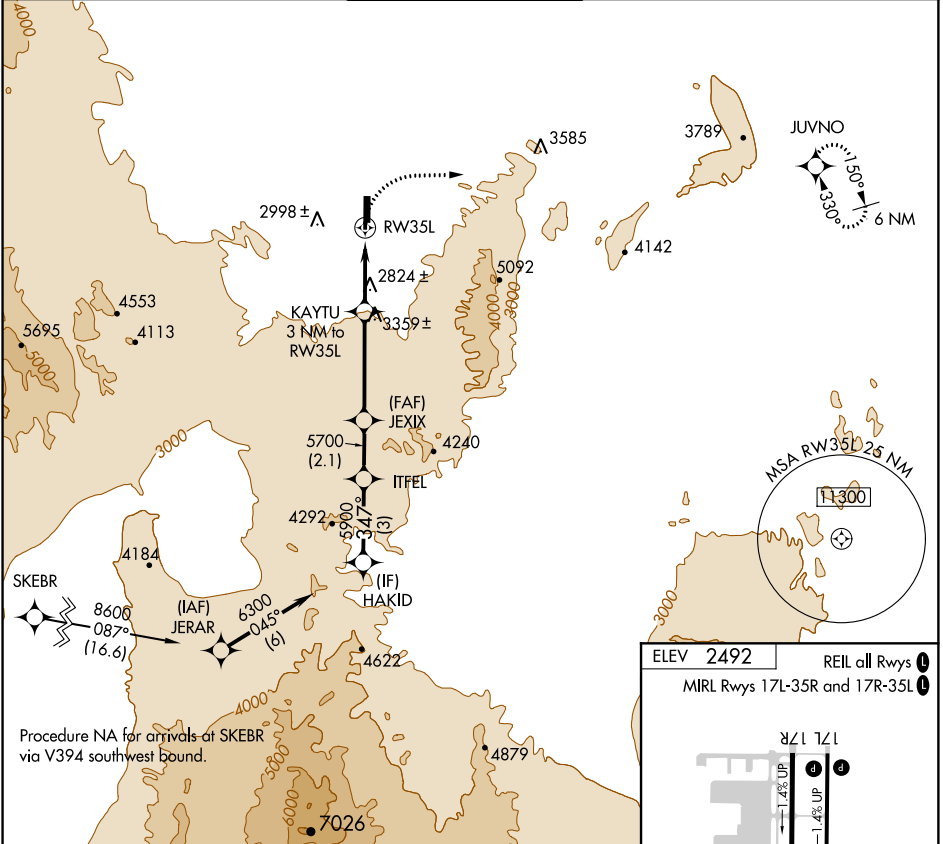
**RNAV (GPS)-B**  
**HENDERSON EXECUTIVE (HND)**

APP CRS <b>347°</b>	Rwy Idg TDZE Apt Elev	<b>N/A</b> <b>N/A</b> <b>2492</b>
------------------------	-----------------------------	---

**⚠** When local altimeter setting not received, use McCarran Intl altimeter setting and increase all MDAs 60 feet.  
 DME/DME RNP- 0.3 NA. Visibility reduction by helicopters NA.

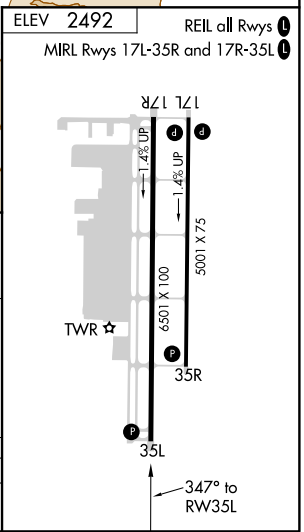
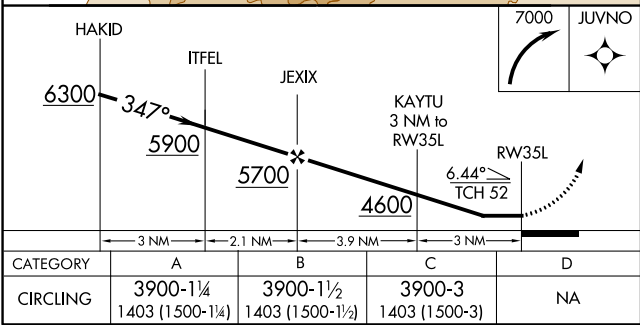
**⚠** MISSED APPROACH: Climbing right turn to 7000 direct JUVNO and hold, continue climb-in-hold to 7000.

ATIS <b>120.775</b>	LAS VEGAS APP CON <b>118.4 307.25</b>	HENDERSON TOWER* <b>125.1 (CTAF) ①</b>	GND CON <b>127.8</b>	UNICOM <b>122.95</b>
------------------------	--	---	-------------------------	-------------------------



SW-4, 14 SEP 2017 to 12 OCT 2017

SW-4, 14 SEP 2017 to 12 OCT 2017



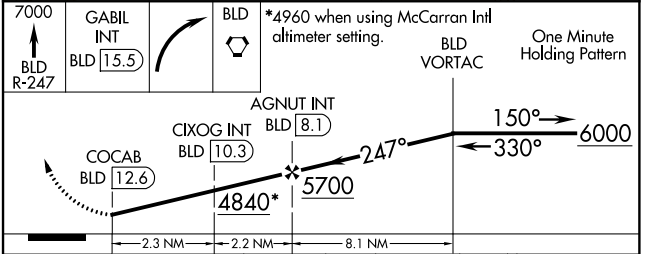
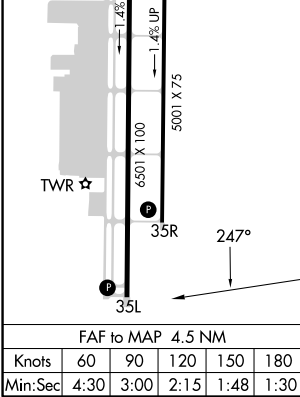
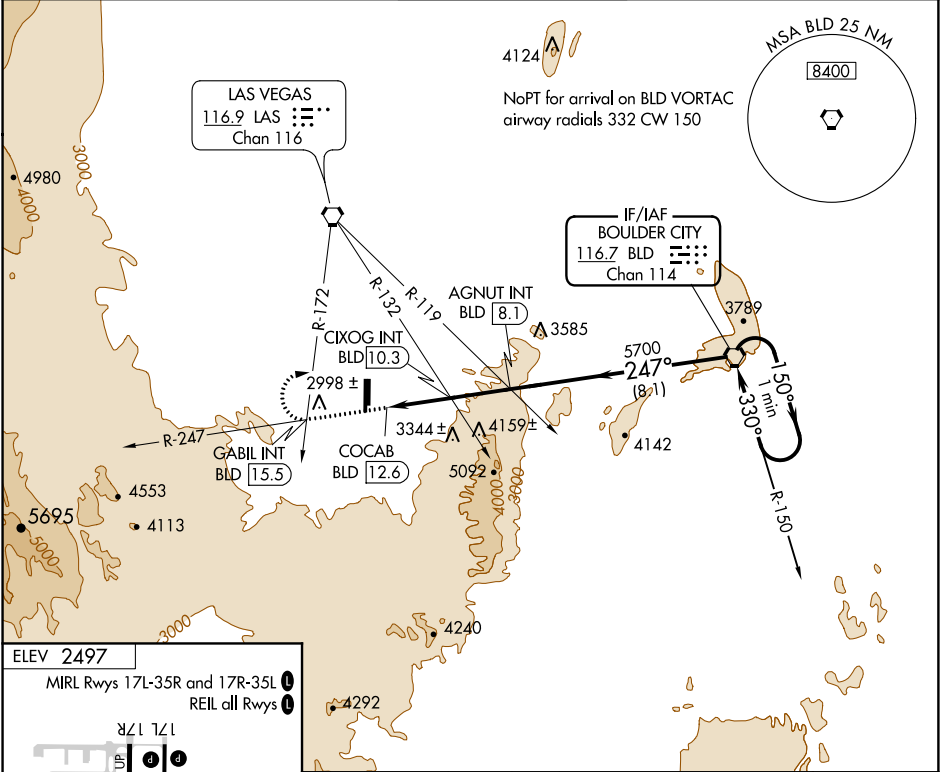
VORTAC BLD <b>116.7</b> Chan <b>114</b>	APP CRS <b>247°</b>	Rwy Idg TDZE Apt Elev <b>N/A</b> <b>N/A</b> <b>2497</b>
---	------------------------	--

**VOR-C**  
HENDERSON EXECUTIVE (HND)

**⚠** Circling to Rwy 35L NA at night.  
**⚠** If local altimeter setting not received, use McCarran Intl altimeter setting and increase all MDAs 60 feet.

MISSED APPROACH: Climb to 7000 on BLD VORTAC R-247 to GABIL INT/BLD 15.5 DME and right turn direct BLD VORTAC and hold.

ATIS <b>120.775</b>	LAS VEGAS APP CON <b>118.4 307.25</b>	HENDERSON TOWER* <b>125.1</b> (CTAF) <b>0</b>	GND CON <b>127.8</b>	UNICOM <b>122.95</b>
------------------------	--	--	-------------------------	-------------------------



CATEGORY	A	B	C	D
CIRCLING	4840-1¼ 2343 (2400-1¼)	4840-1½ 2343 (2400-1½)	4840-3 2343 (2400-3)	NA
CIXOG FIX MINIMUMS (DUAL VOR RECEIVERS OR DME REQUIRED)				
CIRCLING	3620-1¼ 1123 (1200-1¼)	3620-1½ 1123 (1200-1½)	3620-3 1123 (1200-3)	NA

SW-4, 14 SEP 2017 to 12 OCT 2017

SW-4, 14 SEP 2017 to 12 OCT 2017