

DEPARTURE ROUTE DESCRIPTION

TAKE-OFF RUNWAY 17R: Climb heading 168° to intercept course 198° to CAVER, then on track 160° to DAWNI, then on track 099° to CAPTA, then on track 073° to BAWLD, then on track 052° to cross ACSIN at or above 13000, then on track 018° to REELY, then on track 039° to cross TRALR at or below FL190, then on track 055° to BEERZ, thence. . . .

. . . .via transition. Maintain FL190, expect filed altitude 10 minutes after departure.

CIKED TRANSITION (ACSIN2.CIKED)

CIRQS TRANSITION (ACSIN2.CIRQS)

DOVE CREEK TRANSITION (ACSIN2.DVC)

ATIS 120.775
GND CON 127.8
HENDERSON TOWER * 125.1 (CTAF)
LAS VEGAS DEP CON 118.4 307.25

TAKE-OFF MINIMUMS

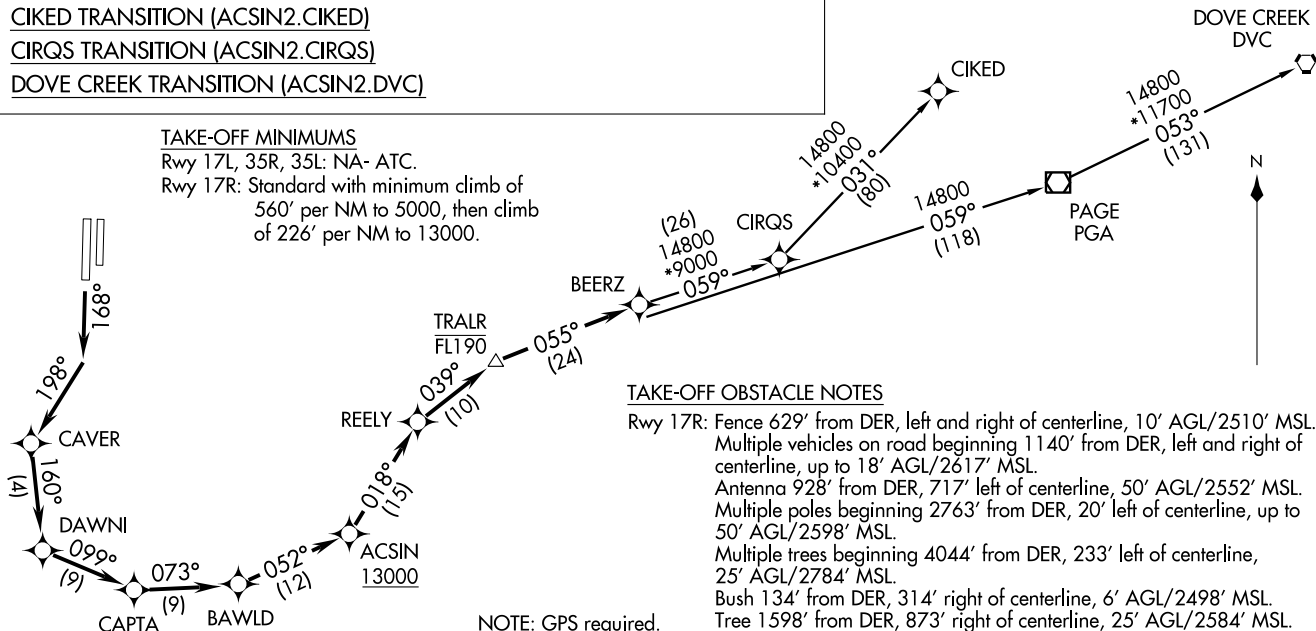
Rwy 17L, 35R, 35L: NA- ATC.
Rwy 17R: Standard with minimum climb of 560' per NM to 5000, then climb of 226' per NM to 13000.

TAKE-OFF OBSTACLE NOTES

Rwy 17R: Fence 629' from DER, left and right of centerline, 10' AGL/2510' MSL. Multiple vehicles on road beginning 1140' from DER, left and right of centerline, up to 18' AGL/2617' MSL. Antenna 928' from DER, 717' left of centerline, 50' AGL/2552' MSL. Multiple poles beginning 2763' from DER, 20' left of centerline, up to 50' AGL/2598' MSL. Multiple trees beginning 4044' from DER, 233' left of centerline, 25' AGL/2784' MSL. Bush 134' from DER, 314' right of centerline, 6' AGL/2498' MSL. Tree 1598' from DER, 873' right of centerline, 25' AGL/2584' MSL. Multiple poles beginning 2756' from DER, 354' right of centerline, up to 50' AGL/2609' MSL.

NOTE: GPS required.
NOTE: RNAV 1.

NOTE: Chart not to scale.



ACSN TWO DEPARTURE (RNAV)
(ACSIN2.ACSIN) 11237

(ACSIN2.ACSIN) 11237
ACSN TWO DEPARTURE (RNAV)

LAS VEGAS, NEVADA
LAS VEGAS/ HENDERSON EXECUTIVE (HND)

SL-6514 (FAA)
LAS VEGAS/ HENDERSON EXECUTIVE (HND)
LAS VEGAS, NEVADA

FLAMZ TWO DEPARTURE (RNAV)
(FLAMZ2.FLAMZ) 11237

(FLAMZ2.FLAMZ) 11237
FLAMZ TWO DEPARTURE (RNAV)

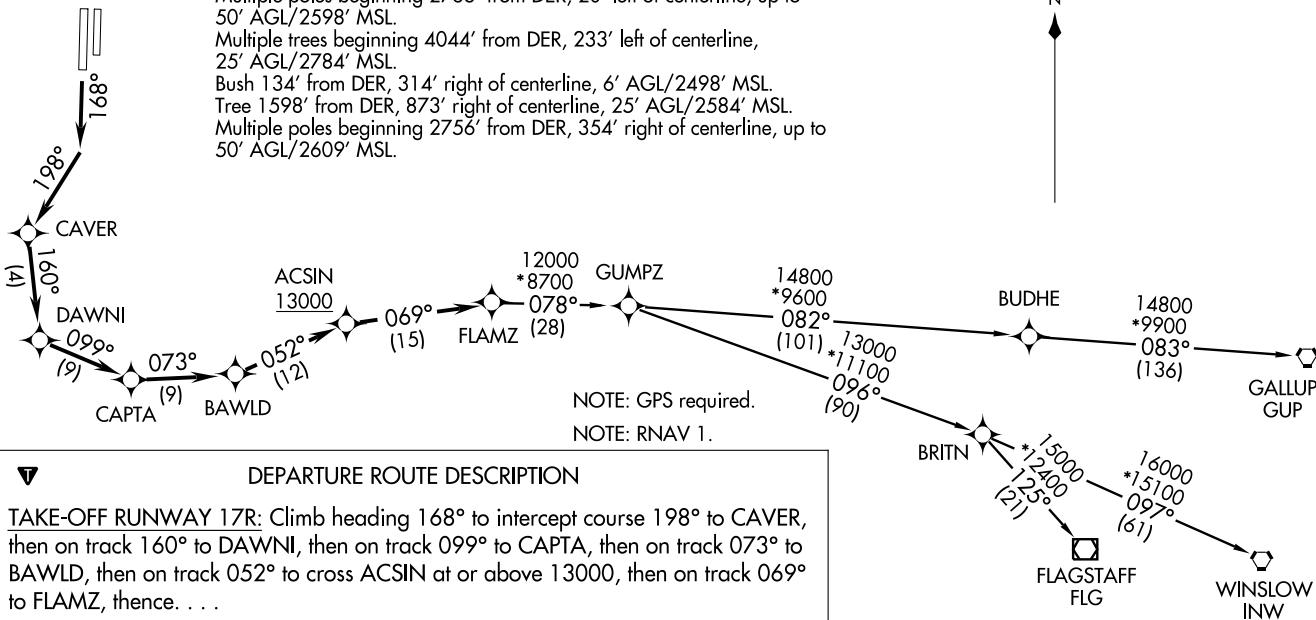
SI-6514 (FAA)

LAS VEGAS/ HENDERSON EXECUTIVE (HND)
LAS VEGAS, NEVADA

ATIS 120.775
GND CON 127.8
HENDERSON TOWER * 125.1 (CTAF)
LAS VEGAS DEP CON 118.4 307.25

TAKE-OFF OBSTACLE NOTES

Rwy 17R: Fence 629' from DER, left and right of centerline, 10' AGL/2510' MSL.
Multiple vehicles on road beginning 1140' from DER, left and right of centerline, up to 18' AGL/2617' MSL.
Antenna 928' from DER, 717' left of centerline, 50' AGL/2552' MSL.
Multiple poles beginning 2763' from DER, 20' left of centerline, up to 50' AGL/2598' MSL.
Multiple trees beginning 4044' from DER, 233' left of centerline, 25' AGL/2784' MSL.
Bush 134' from DER, 314' right of centerline, 6' AGL/2498' MSL.
Tree 1598' from DER, 873' right of centerline, 25' AGL/2584' MSL.
Multiple poles beginning 2756' from DER, 354' right of centerline, up to 50' AGL/2609' MSL.



NOTE: GPS required.
NOTE: RNAV 1.

DEPARTURE ROUTE DESCRIPTION

TAKE-OFF RUNWAY 17R: Climb heading 168° to intercept course 198° to CAVER, then on track 160° to DAWN1, then on track 099° to CAPTA, then on track 073° to BAWLD, then on track 052° to cross ACSIN at or above 13000, then on track 069° to FLAMZ, thence. . .

. . . via transition. Maintain FL190, expect filed altitude 10 minutes after departure.

- FLAGSTAFF TRANSITION (FLAMZ2.FLG)
- GALLUP TRANSITION (FLAMZ2.GUP)
- WINSLOW TRANSITION (FLAMZ2.INW)

TAKE-OFF MINIMUMS

Rwy 17L, 35R, 35L: NA- ATC.
Rwy 17R: Standard with a minimum climb of 560' per NM to 5000, then climb of 226' per NM to 13000.

NOTE: Chart not to scale.

LAS VEGAS/ HENDERSON EXECUTIVE (HND)
LAS VEGAS, NEVADA

PALLY TWO DEPARTURE (RNAV)
(PALLY2.PALLY) 11237

PALLY TWO DEPARTURE (RNAV)
(PALLY2.PALLY) 11237

SL-6514 (FAA)

LAS VEGAS/ HENDERSON EXECUTIVE (HND)
LAS VEGAS, NEVADA

ATIS 120.775
GND CON 127.8
HENDERSON TOWER *
125.1 (CTAF)
LAS VEGAS DEP CON
118.4 307.25



TAKE-OFF OBSTACLE NOTES

Rwy 17R: Fence 629' from DER, left and right of centerline, 10' AGL/2510' MSL.
Multiple vehicles on road beginning 1140' from DER, left and right of centerline, up to 18' AGL/2617' MSL.
Antenna 928' from DER, 717' left of centerline, 50' AGL/2552' MSL.
Multiple poles beginning 2763' from DER, 20' left of centerline, up to 50' AGL/2598' MSL.
Multiple trees beginning 4044' from DER, 233' left of centerline, 25' AGL/2784' MSL.
Bush 134' from DER, 314' right of centerline, 6' AGL/2498' MSL.
Tree 1598' from DER, 873' right of centerline, 25' AGL/2584' MSL.
Multiple poles beginning 2756' from DER, 354' right of centerline, up to 50' AGL/2609' MSL.

NOTE: KENNO and COALDALE TRANSITIONS:
Climb of 270' per NM to 17000 from WHYME to HEDAL.

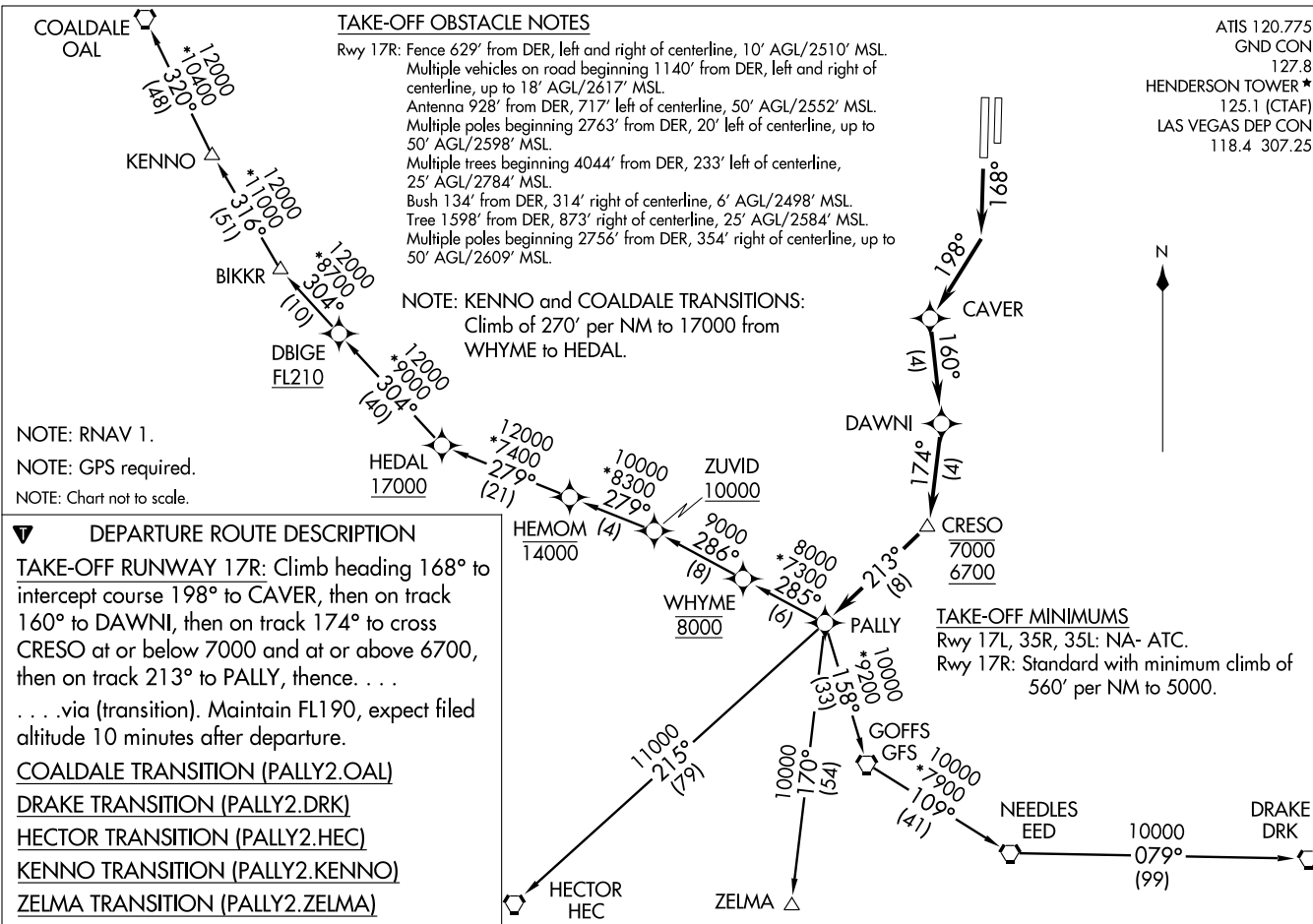
NOTE: RNAV 1.
NOTE: GPS required.
NOTE: Chart not to scale.

DEPARTURE ROUTE DESCRIPTION

TAKE-OFF RUNWAY 17R: Climb heading 168° to intercept course 198° to CAVER, then on track 160° to DAWN1, then on track 174° to cross CRESO at or below 7000 and at or above 6700, then on track 213° to PALLY, thence. . . .
. . . .via (transition). Maintain FL190, expect filed altitude 10 minutes after departure.

- COALDALE TRANSITION (PALLY2.OAL)
- DRAKE TRANSITION (PALLY2.DRK)
- HECTOR TRANSITION (PALLY2.HEC)
- KENNO TRANSITION (PALLY2.KENNO)
- ZELMA TRANSITION (PALLY2.ZELMA)

LAS VEGAS/ HENDERSON EXECUTIVE (HND)
LAS VEGAS, NEVADA



TAKE-OFF MINIMUMS
Rwy 17L, 35R, 35L: NA- ATC.
Rwy 17R: Standard with minimum climb of 560' per NM to 5000.