

WAAS CH 72916 W14A	APP CRS 137°	Rwy Idg TDZE 1157 Apt Elev 1162	5005
--	------------------------	---	-------------

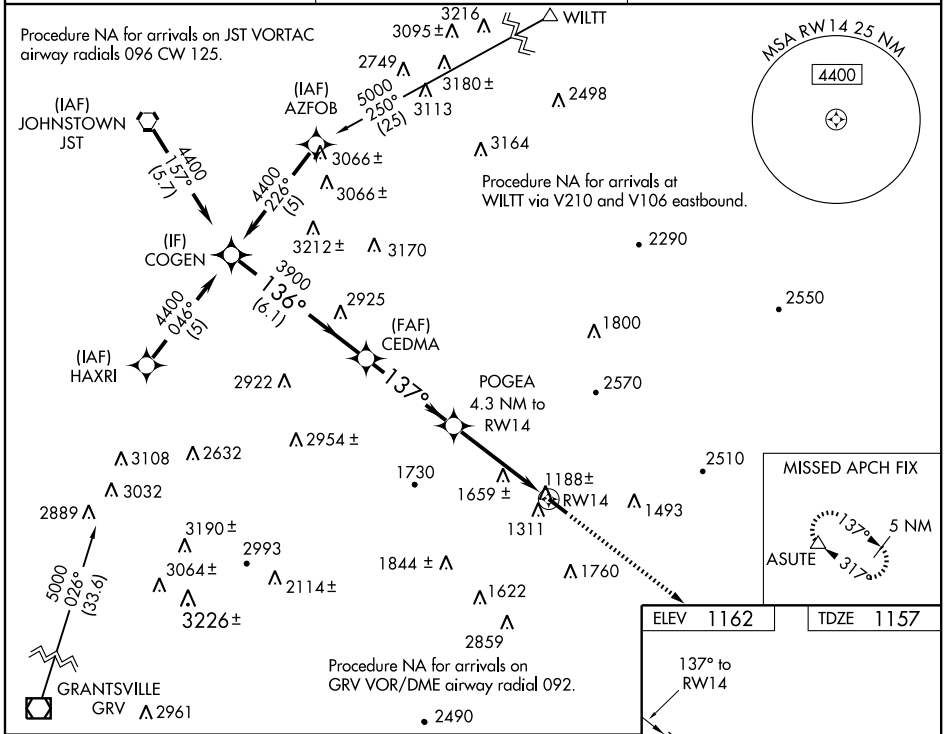
RNAV (GPS) RWY 14

BEDFORD COUNTY (HMZ)

NA Baro-VNAV NA when using Altoona altimeter setting. For uncompensated Baro-VNAV systems, LNAV/VNAV NA below -17°C (2°F) or above 47°C (116°F). DME/DME RNP-0.3 NA. Visibility reduction by helicopters NA. When local altimeter setting not received, use Altoona altimeter setting and increase all DA 84 feet and all MDA 100 feet, increase LPV all Cats visibility ½ mile, LNAV Cat A and C visibility ¼ mile and Cat D ½ mile and Circling Cat A visibility ¼ mile and Cat C ½ mile.

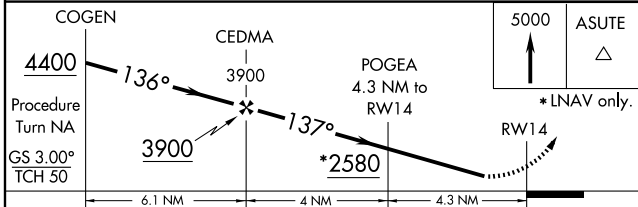
MISSED APPROACH: Climb to 5000 direct ASUTE and hold, continue climb-in-hold to 5000.

AWOS-3 123.675	JOHNSTOWN APP CON ★ 135.975 244.875	UNICOM 122.7 (CTAF) 0
--------------------------	---	---------------------------------

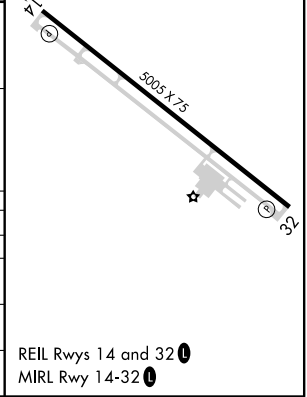


NE-4, 31 MAY 2012 to 28 JUN 2012

NE-4, 31 MAY 2012 to 28 JUN 2012



CATEGORY	A	B	C	D
LPV DA		1678-1¾	521 (600-1¾)	
LNAV/VNAV DA		2149-4	992 (1000-4)	
LNAV MDA	1960-1 803 (800-1)	1960-1¼ 803 (800-1¼)	1960-2¼ 803 (800-2¼)	1960-2½ 803 (800-2½)
CIRCLING	1960-1 798 (800-1)	1960-1¼ 798 (800-1¼)	1960-2¼ 798 (800-2¼)	2120-3 958 (1000-3)

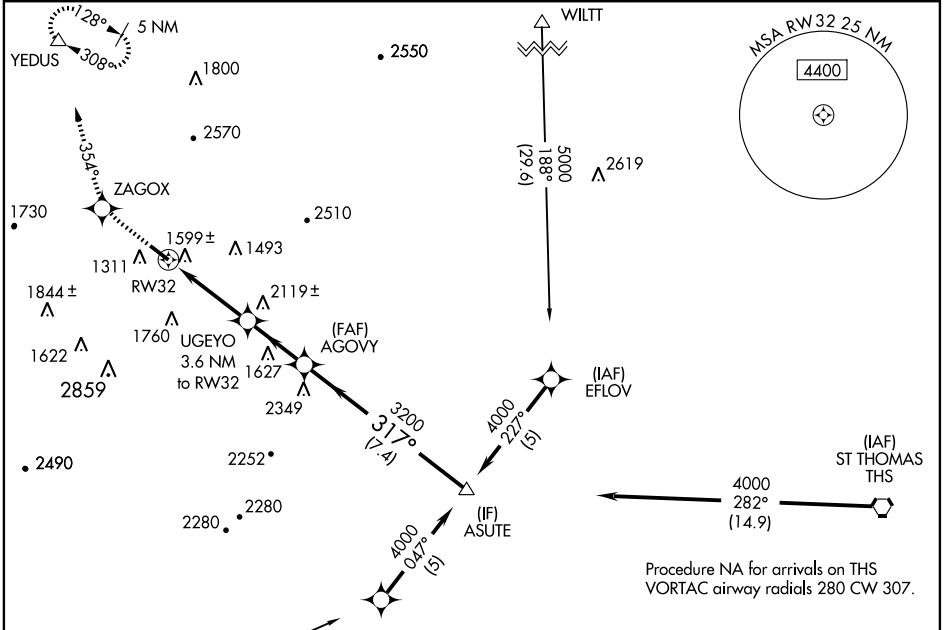


APP CRS 317°	Rwy Idg 5005
	TDZE 1162
	Apt Elev 1162

RNAV (GPS) RWY 32

BEDFORD COUNTY (HMZ)

<p>▼ DME/DME RNP-0.3 NA. Visibility reduction by helicopters NA. VDP NA when using Altoona altimeter setting. When local altimeter setting not received, use Altoona altimeter setting and increase all MDA 100 feet, increase LNAV Cat B and C visibility ¼ mile and Circling Cat C visibility ½ mile. LNAV Cat D minima NA when using Altoona altimeter setting.</p>	<p>MISSED APPROACH: Climb to 5000 direct ZAGOX and via track 354° to YEDUS and hold, continue climb-in-hold to 5000.</p>
<p>AWOS-3 123.675</p>	<p>JOHNSTOWN APP CON ★ 135.975 244.875</p>
<p>UNICOM 122.7 (CTAF) 0</p>	



NE-4, 31 MAY 2012 to 28 JUN 2012

NE-4, 31 MAY 2012 to 28 JUN 2012

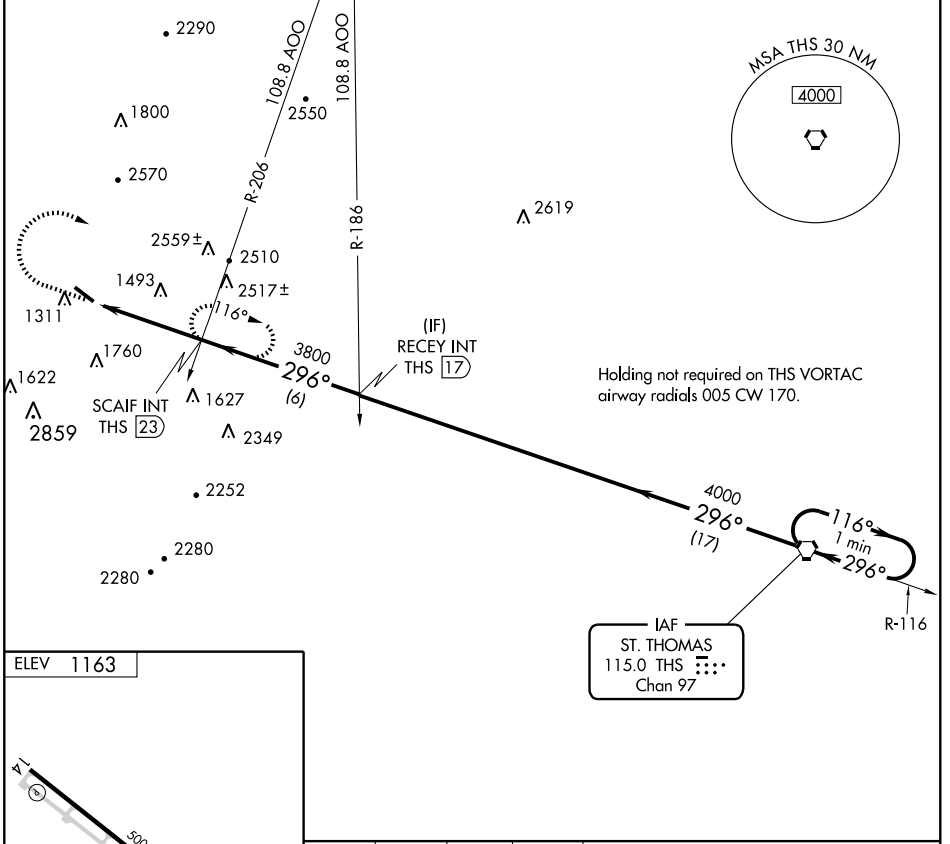
ELEV 1162	TDZE 1162			
5000	ZAGOX	YEDUS	*2600 when using Altoona altimeter setting.	
↑	tr 354°	△	ASUTE 4000	
1.5 NM to RW32	UGEYO 3.6 NM to RW32	AGOVY	Procedure Turn NA	
3.37 TCH 50	3200	4000		
1.5 NM	2.1 NM	2.5 NM	7.4 NM	
VGSi and descent angles not coincident.				
CATEGORY	A	B	C	D
LNAV MDA	1860-1	698 (700-1)	1860-2 698 (700-2)	1860-2 ¼ 698 (700-2 ¼)
CIRCLING	1900-1 738 (800-1)	1960-1 ¼ 798 (800-1 ¼)	1960-2 ¼ 798 (800-2 ¼)	2120-3 958 (1000-3)
REIL Rwy 14 and 32 0				
MIRL Rwy 14-32 0				

VORTAC THS 115.0 Chan 97	APP CRS 296°	Rwy Idg TDZE Apt Elev	N/A N/A 1163
--	------------------------	-----------------------------	---

NA When local altimeter setting not received, use Altoona altimeter setting and increase MDA 100 feet.

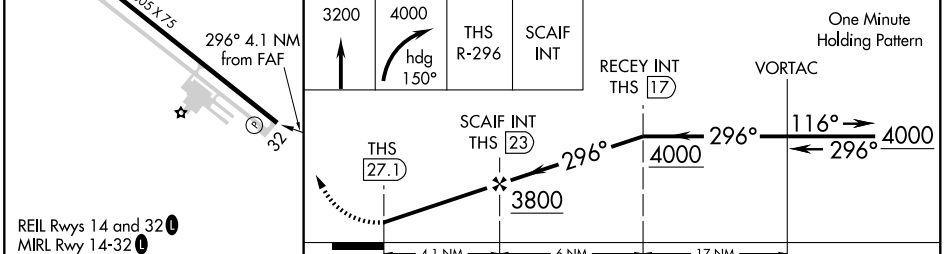
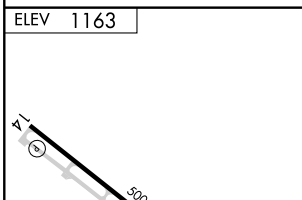
MISSED APPROACH: Climb to 3200 then climbing right turn to 4000 via heading 150° and THS VORTAC R-296 to SCAIF INT/ 23 DME and hold.

AWOS-3 123.675	JOHNSTOWN APP CON * 135.975 244.875	UNICOM 122.7 (CTAF) 0
--------------------------	---	---------------------------------



NE-4, 31 MAY 2012 to 28 JUN 2012

NE-4, 31 MAY 2012 to 28 JUN 2012



FAF to MAP 4.1 NM					
Knots	60	90	120	150	180
Min:Sec	4:06	2:44	2:03	1:38	1:22

CATEGORY	A	B	C	D
CIRCLING	2580-1¼ 1417 (1500-1¼)	2580-1½ 1417 (1500-1½)	2580-3	1417 (1500-3)