

(HELNS.HELNS4) 03135

HELNS FOUR ARRIVAL

ST-330 (FAA)

PORTLAND, OREGON

PORTLAND APP CON
124.35 299.2
PORTLAND INTL ATIS
128.35 269.9
PORTLAND-HILLSBORO ATIS
127.65

SEATTLE
116.8 SEA
Chan 115
N47°26.12'-W122°18.58'
L-1, H-1

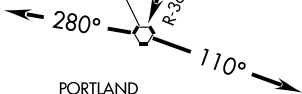
10000
*9700
161°
(71)

HELNS
N46°15.42'
W122°18.58'

BATTLE GROUND
116.6 BTG
Chan 113
N45°44.87'-W122°35.49'

KRATR
N46° 05.39' - W122° 24.17'

NOTE: Maintain the last assigned altitude. Upon receipt of "Descend via the HELNS4": . . .
PROP/TURBOPROP: Cross at and maintain 10,000'.
TURBOJET: Cross at and maintain 12,000' at 300 K IAS or less.



PORTLAND-HILLSBORO

PORTLAND INTL

PORTLAND-TROUTDALE

AURORA STATE

NOTE: Chart not to scale.

NOTE: DME and RADAR required.

SEATTLE TRANSITION (SEA.HELNS4): From over SEA VORTAC via SEA R-161 to HELNS DME FIX. Thence....

.... From over HELNS DME FIX via BTG R-360 to BTG VORTAC. Thence....

LANDING EAST: Depart BTG VORTAC heading 280° for vectors to final approach course.

LANDING WEST: Depart BTG VORTAC heading 110° for vectors to final approach course.

HELNS FOUR ARRIVAL

(HELNS.HELNS4) 03135

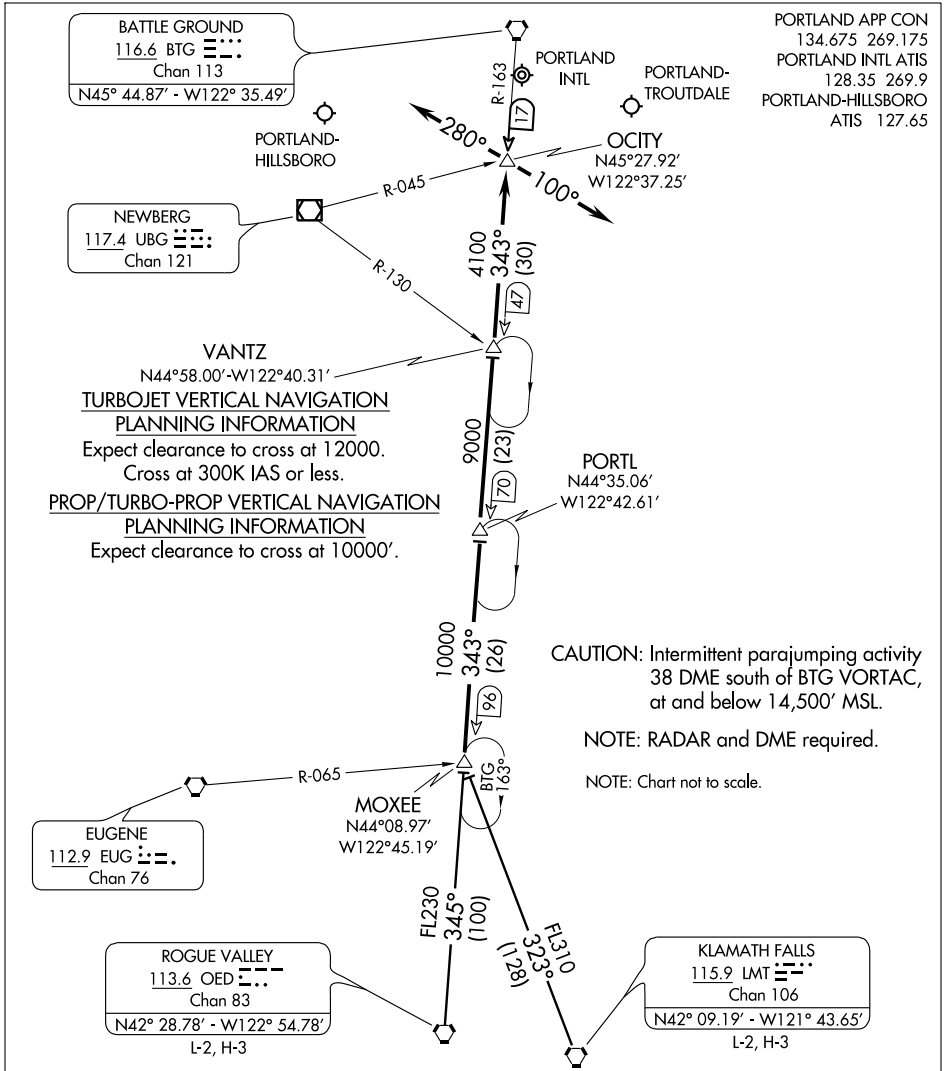
PORTLAND, OREGON

NW-1, 31 MAY 2012 to 28 JUN 2012

NW-1, 31 MAY 2012 to 28 JUN 2012

(MOXEE.MOXEE6) 07298
MOXEE SIX ARRIVAL

PORTLAND, OREGON



NW-1, 31 MAY 2012 to 28 JUN 2012

NW-1, 31 MAY 2012 to 28 JUN 2012

KLAMATH FALLS TRANSITION (LMT.MOXEE6): From over LMT VORTAC via LMT R-323 to MOXEE INT. Thence

ROGUE VALLEY TRANSITION (OED.MOXEE6): From over OED VORTAC via OED R-345 to MOXEE INT. Thence

. . . . From over MOXEE INT via BTG R-163 to OCITY INT. Thence via:
Landing East - Depart OCITY INT heading 280° for vectors to final approach course.
Landing West - Depart OCITY INT heading 100° for vectors to final approach course.

LOST COMMUNICATIONS: After OCITY INT, proceed direct BTG VORTAC.

MOXEE SIX ARRIVAL
 (MOXEE.MOXEE6) 07298

PORTLAND, OREGON