

(BERN1.BERN1) 11349

# BERNI ONE DEPARTURE (RNAV)

SL-5063 (FAA)

PORTLAND-HILLSBORO (HIO)  
PORTLAND, OREGON

ATIS 127.65  
GND CON  
121.7  
HILLSBORO TOWER\*  
119.3 (CTAF) 239.3  
PORTLAND DEP CON  
126.0 284.6

NOTE: GPS Required.  
NOTE: RNAV 1.  
NOTE: RADAR required.  
NOTE: Turbojet aircraft only.

### TAKEOFF MINIMUMS

Rwy 2, 20: NA-ATC.

Rwy 13: Obstacle climb of  
230' per NM to 2400'.  
Minimum ATC climb of  
500' per NM to 1200'.

Rwy 31: 200-1/4 or standard  
with a minimum climb of  
225' per NM to 700'.

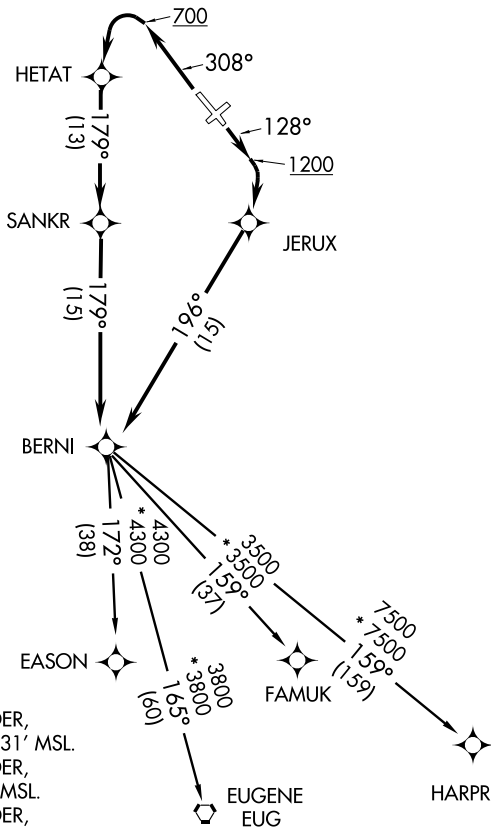
### TAKEOFF OBSTACLE NOTES

Rwy 13: Multiple trees beginning 1103' from DER,  
8' left of centerline, up to 110' AGL/331' MSL.

Multiple trees beginning 1030' from DER,  
9' right of centerline, 110' AGL/348' MSL.

Rwy 31: Multiple trees beginning 1663' from DER,  
623' right of centerline, up to 110' AGL/363' MSL.

Pole 702' from DER, 603' left of centerline, up to 26' AGL/215' MSL.



NOTE: Chart not to scale.

NW-1, 31 MAY 2012 to 28 JUN 2012

NW-1, 31 MAY 2012 to 28 JUN 2012

## DEPARTURE ROUTE DESCRIPTION

**TAKEOFF RUNWAY 13:** Climb heading 128° to 1200 feet, then climbing right turn direct JERUX, then on depicted route to BERN1. Thence . . .

**TAKEOFF RUNWAY 31:** Climb heading 308° to 700', then climbing left turn direct HETAT, then on depicted route to BERN1. Thence . . .

. . . (Transition). Maintain assigned altitude. Expect filed altitude 10 minutes after departure.

EASON TRANSITION (BERN1.EASON)

EUGENE TRANSITION (BERN1.EUG)

FAMUK TRANSITION (BERN1.FAMUK)

HARPR TRANSITION (BERN1.HARPR)

# BERNI ONE DEPARTURE (RNAV)

(BERN1.BERN1) 11349

PORTLAND, OREGON  
PORTLAND-HILLSBORO (HIO)

(CANBY9.CANBY) 11349

# CANBY NINE DEPARTURE

SL-5063 (FAA)

PORTLAND-HILLSBORO (HIO)  
PORTLAND, OREGON

ATIS 127.65  
GND CON  
121.7  
HILLSBORO TOWER \*  
119.3 (CTAF) 239.3  
PORTLAND DEP CON  
126.0 284.6

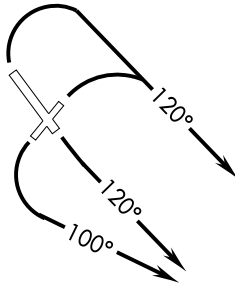
BATTLEGROUND  
116.6 BTG   
Chan 113

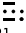
### TAKEOFF MINIMUMS

Rwy 13, 20: Standard.

Rwy 2: Standard with minimum climb of 315' per NM to 2800.

Rwy 31: Standard with minimum climb of 280' per NM to 2800.



NEWBERG  
117.4 UBG   
Chan 121



R-085

R-175

175°

27'

CANBY  
N45°18.63'  
W122°45.89'  
L-1

NOTE: Chart not to scale.

### TAKEOFF OBSTACLE NOTES

Rwy 2: Vehicle on road 247' from DER, 1' right of centerline, up to 15' AGL/220' MSL.

Terrain left and right of centerline beginning at DER, up to 302' MSL.

Rwy 13: Terrain left and right of centerline, beginning at DER, up to 296' MSL.

Trees 1836' from DER, 8' left of centerline, up to 125' AGL/331' MSL.

Rwy 20: Terrain left and right of centerline beginning at DER, up to 306' MSL.

Trees and hangars beginning 60' from DER, 32' left of centerline, up to 93' AGL/311' MSL.

Trees, antennas and buildings beginning 564' from DER, 411' right of centerline, up to 74' AGL/280' MSL.

Rwy 31: Terrain left and right of centerline, beginning at DER, up to 292' MSL.

Trees beginning 1664' from DER, 626' right of centerline, up to 194' AGL/363' MSL.



### DEPARTURE ROUTE DESCRIPTION

TAKEOFF RUNWAYS 2, 31: Climbing right turn heading 120°, thence . . . .

TAKEOFF RUNWAY 20: Climbing left turn heading 100°, thence . . . .

TAKEOFF RUNWAY 13: Climbing left turn heading 120°, thence . . . .

. . . . Intercept and proceed via BTG R-175 to CANBY INT. Thence via assigned route.

# CANBY NINE DEPARTURE

(CANBY9.CANBY) 11349

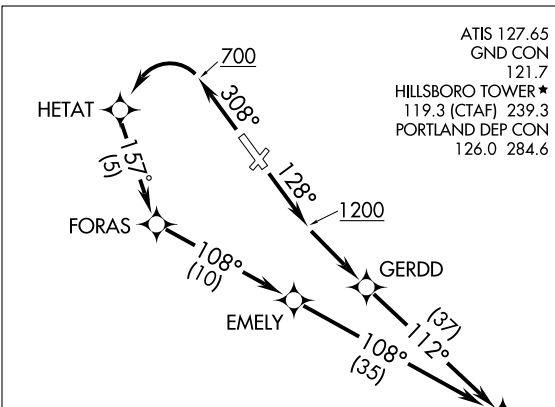
PORTLAND, OREGON  
PORTLAND-HILLSBORO (HIO)

NW-1, 31 MAY 2012 to 28 JUN 2012

NW-1, 31 MAY 2012 to 28 JUN 2012

CHISM TWO DEPARTURE (RNAV)  
(CHISM2.CHISM) 11349

PORTLAND-OREGON  
PORTLAND-HILLSBORO (HTO)



ATIS 127.65  
GND CON 121.7  
HILLSBORO TOWER \* 119.3 (CTAF) 239.3  
PORTLAND DEP CON 126.0 284.6



DEPARTURE ROUTE DESCRIPTION

**TAKEOFF RUNWAY 13:** Climb heading 128° to 1200', then climbing left turn direct GERDD, then on depicted route to CHISM, thence . . . .

**TAKEOFF RUNWAY 31:** Climb heading 308° to 700', then climbing left turn direct HETAT, then on depicted route to CHISM, thence . . . .  
. . . . (Transition), Maintain assigned altitude. Expect filed altitude 10 minutes after departure.

- DESCHUTES TRANSITION (CHISM2.DSD)
- JOGEN TRANSITION (CHISM2.JOGEN)
- KIMBERLY TRANSITION (CHISM2.IMB)
- PAWLI TRANSITION (CHISM2.PAWLI)
- RIELY TRANSITION (CHISM2.RIELY)
- SMIGE TRANSITION (CHISM2.SMIGE)

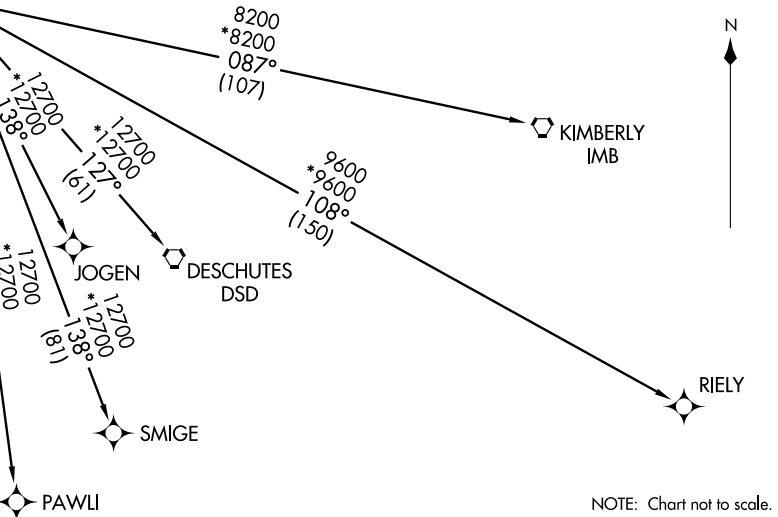
NOTE: GPS required.  
NOTE: RNAV 1.  
NOTE: RADAR required.  
NOTE: Turbojet aircraft only.

TAKEOFF MINIMUMS

Rwy 2, 20: NA - ATC.  
Rwy 13: Standard with a minimum ATC climb of 500' per NM to 1200'.  
Rwy 31: 300-1¼ or standard with a minimum climb of 225' per NM to 700'.

TAKEOFF OBSTACLE NOTES

Rwy 13: Multiple trees beginning 1103' from DER, 8' left of centerline, up to 110' AGL/331' MSL.  
Multiple trees beginning 1030' from DER, 9' right of centerline, 110' AGL/348' MSL.  
Rwy 31: Multiple trees beginning 1663' from DER, 623' right of centerline, up to 110' AGL/363' MSL.  
Pole 702' from DER, 603' left of centerline, up to 26' AGL/215' MSL.



NOTE: Chart not to scale.

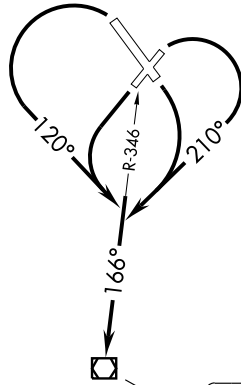
(CHISM2.CHISM) 11349  
CHISM TWO DEPARTURE (RNAV)

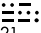
SL-5063 (FAA)

PORTLAND-HILLSBORO (HTO)  
PORTLAND-OREGON

# FARMINGTON FIVE DEPARTURE

ATIS 127.65  
GND CON  
121.7  
HILLSBORO TOWER ★  
119.3 (CTAF) 239.3  
PORTLAND DEP CON  
126.0 284.6



NEWBERG
117.4 UBG 
Chan 121
N45°21.19' W122°58.69'
L-1, H-1

### TAKEOFF MINIMUMS

- Rwy 13, 20: Standard.
- Rwy 2: Standard with minimum climb of 307' per NM to 2700.
- Rwy 31: Standard with minimum climb of 235' per NM to 2700.

### TAKEOFF OBSTACLE NOTES

- Rwy 2: Vehicle on road 247' from DER, 1' right of centerline, up to 15' AGL/220' MSL.  
Terrain left and right of centerline beginning at DER up to 302' MSL.
- Rwy 13: Terrain left and right of centerline beginning at DER up to 296' MSL.  
Trees 1836' from DER, 8' left centerline, up to 125' AGL/331' MSL.
- Rwy 20: Terrain left and right of centerline beginning at DER up to 306' MSL.  
Trees and hangars beginning 60' from DER, 32' left of centerline, up to 93' AGL/311' MSL.  
Trees, antennas and buildings beginning 564' from DER, 411' right of centerline, up to 74' AGL/280' MSL.
- Rwy 31: Terrain left and right of centerline beginning at DER up to 292' MSL.  
Trees beginning 1664' from DER, 626' right of centerline up to 194' AGL/363' MSL.

NOTE: Chart not to scale.



### DEPARTURE ROUTE DESCRIPTION

TAKEOFF RUNWAYS 2, 13: Turn right heading 210°, thence . . . .

TAKEOFF RUNWAYS 20, 31: Turn left heading 120°, thence . . . .

. . . . Intercept and proceed via UBG R-346 to UBG VOR/DME. Thence via (assigned route).

# FARMINGTON FIVE DEPARTURE

NW-1, 31 MAY 2012 to 28 JUN 2012

NW-1, 31 MAY 2012 to 28 JUN 2012

# SCAPO FIVE DEPARTURE

SL-5063 (FAA)

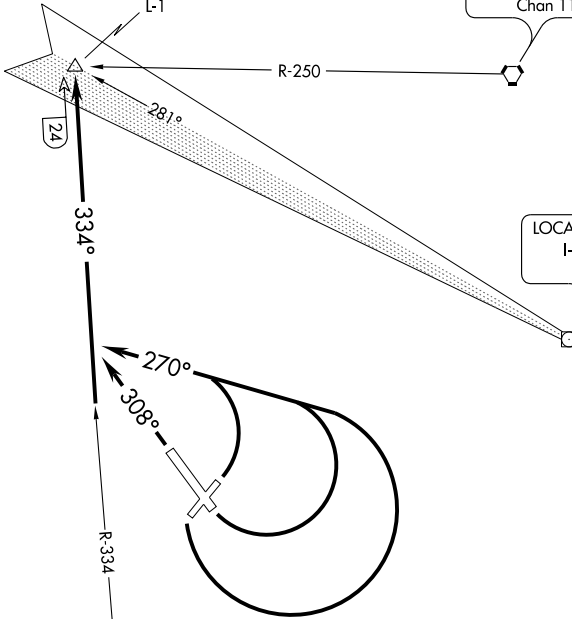
PORTLAND-HILLSBORO (HIO)  
PORTLAND, OREGON

ATIS 127.65  
GND CON  
121.7  
HILLSBORO TOWER \*  
119.3 (CTAF) 239.3  
PORTLAND DEP CON  
126.0 284.6

SCAPO  
N45°45.12'  
W123°01.68'  
L-1

BATTLEGROUND  
116.6 BTG  
Chan 113

LOCALIZER 110.5  
I-PDX  
Chan 42



### TAKEOFF MINIMUMS

- Rwy 20: Standard.
- Rwy 2: Standard with minimum climb of 240' per NM to 1900.
- Rwy 13: Standard with minimum climb of 308' per NM to 2700.
- Rwy 31: Standard with minimum climb of 220' per NM to 2800.

### TAKEOFF OBSTACLE NOTES

- Rwy 2: Vehicle on road 247' from DER, 1' right of centerline, up to 15' AGL/220' MSL. Terrain left and right of centerline beginning at DER up to 302' MSL.
- Rwy 13: Terrain left and right of centerline beginning at DER up to 296' MSL. Trees 1836' from DER, 8' left centerline, up to 125' AGL/331' MSL.
- Rwy 20: Terrain left and right of centerline beginning at DER up to 306' MSL. Trees and hangars beginning 60' from DER, 32' left of centerline, up to 93' AGL/311' MSL. Trees, antennas and buildings beginning 564' from DER, 411' right of centerline, up to 74' AGL/280' MSL.
- Rwy 31: Terrain left and right of centerline beginning at DER up to 292' MSL. Trees beginning 1664' from DER, 626' right of centerline up to 194' AGL/363' MSL.

NOTE: Chart not to scale.



### DEPARTURE ROUTE DESCRIPTION

TAKEOFF RUNWAYS 2, 13, 20: Climbing left turn heading 270°, thence . . . .

TAKEOFF RUNWAY 31: Climb heading 308°, thence . . . .

. . . . Intercept and proceed via UBG VOR/DME R-334 to SCAP0 INT/UBG 24 DME, thence via (assigned route).

# SCAPO FIVE DEPARTURE

NW-1, 31 MAY 2012 to 28 JUN 2012

NW-1, 31 MAY 2012 to 28 JUN 2012