

| | | |
|--|------------------------|---|
| LOC/DME I-RQF 109.75 Chan 34 (Y) | APP CRS 295° | Rwy Idg 5500 TDZE 619 Apt Elev 633 |
|--|------------------------|---|

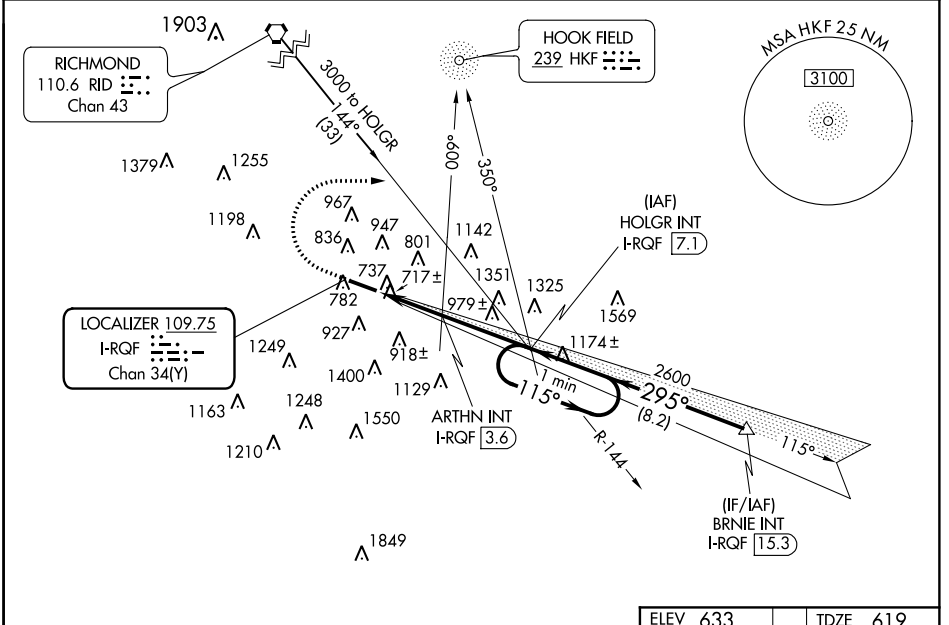
ILS or LOC RWY 29
BUTLER COUNTY RGNL-HOGAN FIELD (H.A.O)

▼ Inoperative table does not apply to S-ILS 29. ADF or DME Required. When local altimeter setting not received, use Cincinnati Muni Airport-Lunken Field altimeter setting and increase all DA 59 feet, and all MDA 60 feet, increase S-LOC 29 Cat C/D and Circling Cat A/C/D visibility ¼ mile, ARTHN fix minimums, increase S-LOC 29 Cat D and Circling Cat C/D visibility ¼ mile. VDP NA when using Cincinnati Muni Airport-Lunken Field altimeter setting.

▲ MALSS

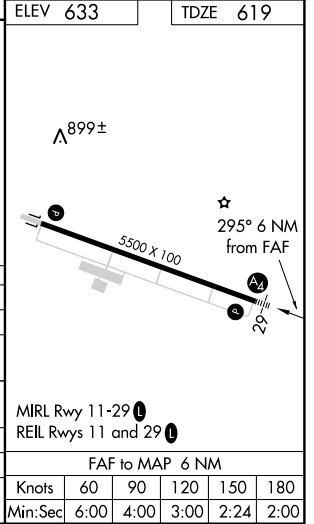
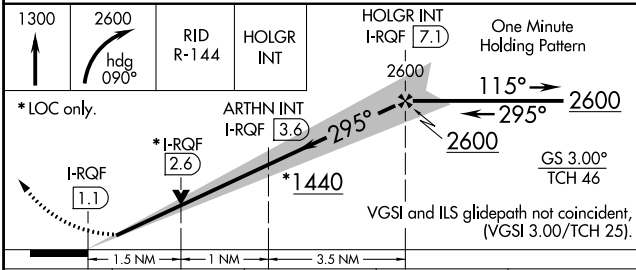
MISSED APPROACH: Climb to 1300 then climbing right turn to 2600 via heading 090° and RID VORTAC R-144 to HOLGR INT/I-RQF 7.1 DME and hold.

| | | | |
|------------------------|--|---------------------------|----------------------------------|
| ASOS 121.425 | CINCINNATI APP CON 121.0 257.725 | CLNC DEL 126.25 | UNICOM 123.05 (CTAF) 0 |
|------------------------|--|---------------------------|----------------------------------|



EC-2, 27 APR 2017 to 25 MAY 2017

EC-2, 27 APR 2017 to 25 MAY 2017



| CATEGORY | A | B | C | D |
|--------------------|-----------------------|-------------------------|-------------------------|-------------------------|
| S-ILS 29 | 819-¾ | | 200 (200-¾) | |
| S-LOC 29 | 1440-¾ | 821 (900-¾) | 1440-2 | 821 (900-2) |
| CIRCLING | 1440-1 807 (900-1) | 1440-1¼ 807 (900-1¼) | 1440-2½ | 807 (900-2½) |
| ARTHN FIX MINIMUMS | | | | |
| S-LOC 29 | 1120-¾ | 501 (500-¾) | 1120-1 | 501 (500-1) |
| CIRCLING | 1200-1 567 (600-1) | 1280-1 647 (700-1) | 1300-1¾ 667 (700-1¾) | 1320-2¼ 687 (700-2¼) |

| | | | |
|--|------------------------|-----------------------------|---|
| WAAS CH 56600 W11A | APP CRS 115° | Rwy Idg TDZE Apt Elev | 5500 632 633 |
|--|------------------------|-----------------------------|---|

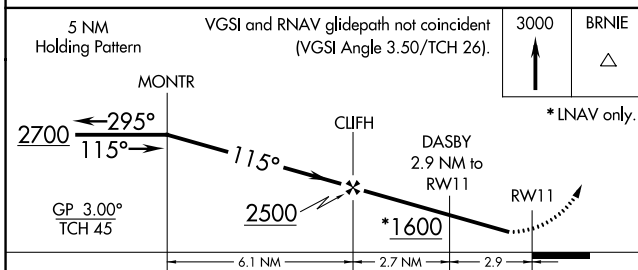
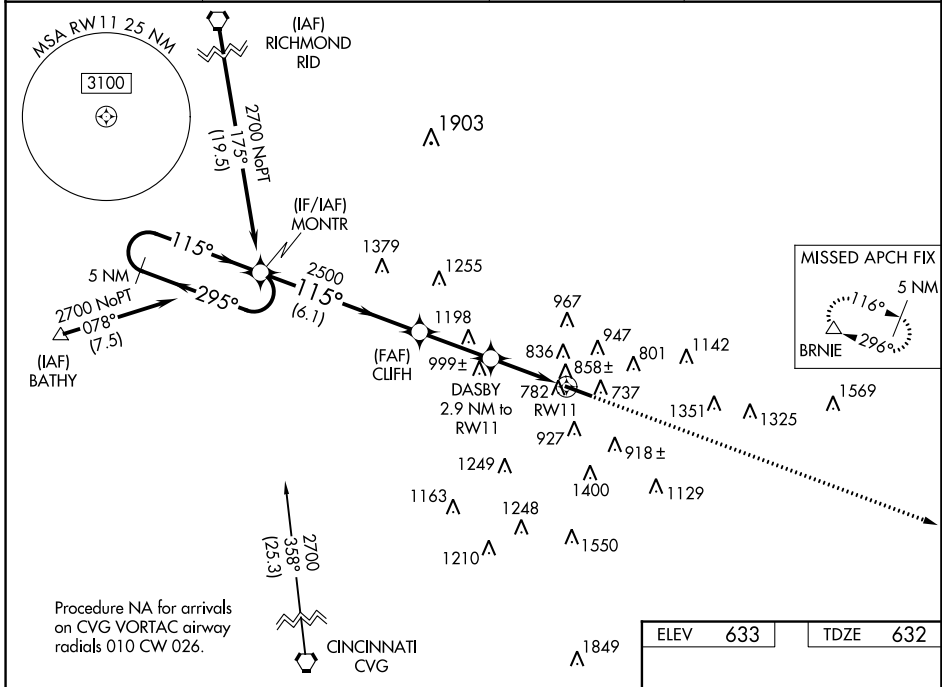
RNAV (GPS) RWY 11

BUTLER COUNTY RGNL-HOGAN FIELD (HAO)

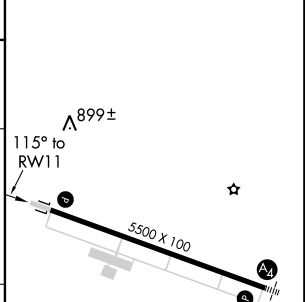
⚠ If local altimeter setting not received, use Cincinnati Muni Airport-Lunken Field altimeter setting and increase all DAs 59 feet and all MDAs 60 feet. Baro-VNAV NA when using Cincinnati Muni Airport-Lunken Field altimeter setting. For uncompensated Baro-VNAV systems, LNAV/VNAV NA below -16°C (4°F) or above 47°C (116°F). Visibility reduction by helicopters NA. DME/DME RNP-0.3 NA.

MISSED APPROACH:
Climb to 3000 direct BRNIE and hold.

| | | | |
|------------------------|--|---------------------------|----------------------------------|
| ASOS 121.425 | CINCINNATI APP CON 121.0 257.725 | CLNC DEL 126.25 | UNICOM 123.05 (CTAF) ① |
|------------------------|--|---------------------------|----------------------------------|



| | |
|----------|----------|
| ELEV 633 | TDZE 632 |
|----------|----------|



| CATEGORY | A | B | C | D |
|--------------|-----------------------|-----------------------|-------------------------|-------------------------|
| LPV DA | | 998-1¼ | 366 (400-1¼) | |
| LNAV/VNAV DA | | 1108-1¾ | 476 (500-1¾) | |
| LNAV MDA | 1160-1 | 528 (600-1) | 1160-1½ 528 (600-1½) | 1160-1¾ 528 (600-1¾) |
| CIRCLING | 1200-1 567 (600-1) | 1280-1 647 (700-1) | 1300-1¾ 667 (700-1¾) | 1320-2¼ 687 (700-2¼) |

EC-2, 27 APR 2017 to 25 MAY 2017

EC-2, 27 APR 2017 to 25 MAY 2017

| | | | |
|--|------------------------|-----------------------------|---|
| WAAS CH 61300 W29A | APP CRS 296° | Rwy Idg TDZE Apt Elev | 5500 619 633 |
|--|------------------------|-----------------------------|---|

RNAV (GPS) RWY 29

BUTLER COUNTY RGNL-HOGAN FIELD (H.A.O)

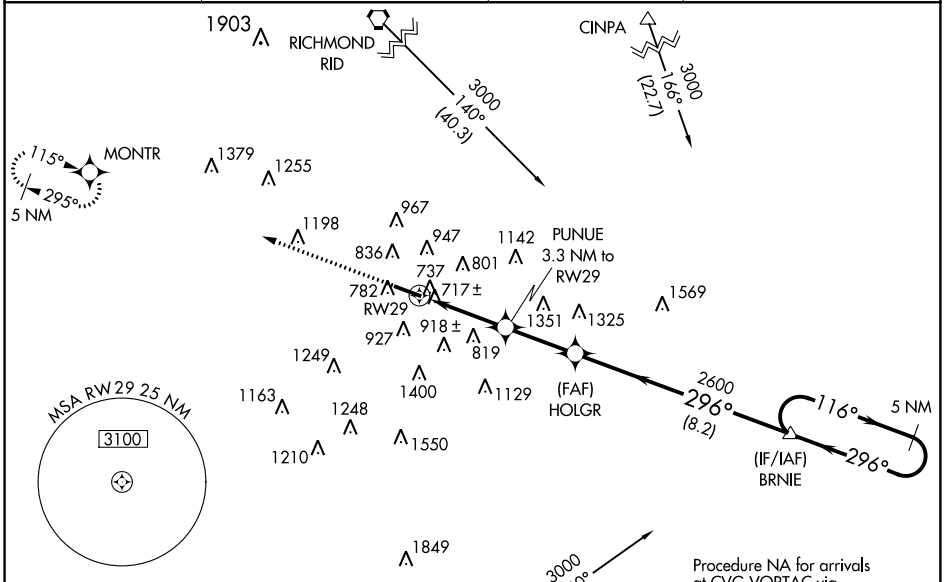
⚠ If local altimeter setting not received, use Cincinnati Muni Airport-Lunken Field altimeter setting and increase all DAs 59 feet and all MDAs 60 feet. VDP NA when using Cincinnati Muni Airport-Lunken Field altimeter setting. Baro-VNAV NA when using Cincinnati Muni Airport-Lunken Field altimeter setting. For uncompensated Baro-VNAV systems, LNAV/VNAV NA below -16°C (4°F) or above 48°C (118°F). For inoperative MALSR, increase LPV visibility to 1½ all Cats and LNAV Cat A/B visibility to 1. DME/DME RNP-0.3 NA.

MALS

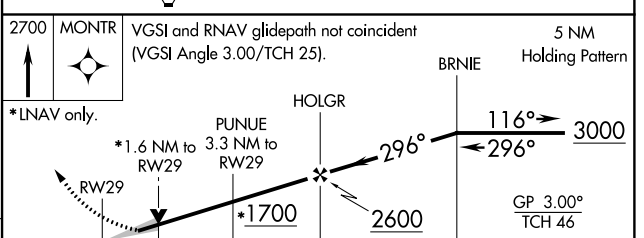
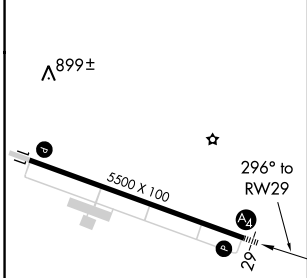


MISSED APPROACH:
Climb to 2700 direct
MONTR and hold.

| | | | |
|------------------------|--|---------------------------|--------------------------------|
| ASOS 121.425 | CINCINNATI APP CON 121.0 257.725 | CLNC DEL 126.25 | UNICOM 123.05 (CTAF) |
|------------------------|--|---------------------------|--------------------------------|



| | |
|----------|----------|
| ELEV 633 | TDZE 619 |
|----------|----------|



| CATEGORY | A | B | C | D |
|--------------|-----------------------|-----------------------|-------------------------|-------------------------|
| LPV DA | 944-¾ | | 325 (400-¾) | |
| LNAV/VNAV DA | 1128-1¼ | | 509 (500-1¼) | |
| LNAV MDA | 1140-¾ | 521 (600-¾) | 1140-1 | 1140-1¼ 521 (600-1¼) |
| CIRCLING | 1200-1 567 (600-1) | 1280-1 647 (700-1) | 1300-1¼ 667 (700-1¼) | 1320-2¼ 687 (700-2¼) |

MIRL Rwy 11-29
REIL Rwy 11 and 29

EC-2, 27 APR 2017 to 25 MAY 2017

EC-2, 27 APR 2017 to 25 MAY 2017