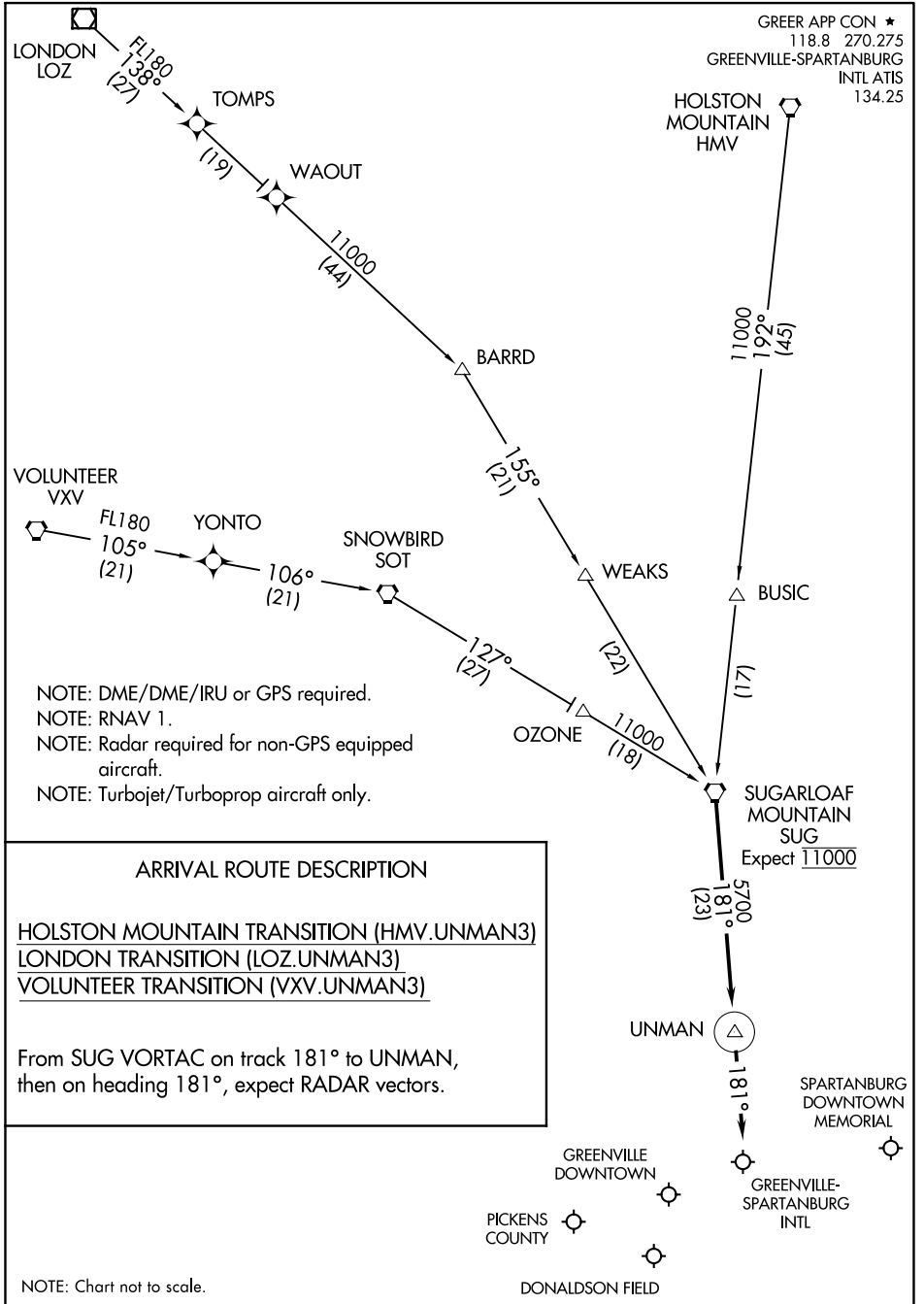


(UNMAN.UNMAN3) 16259

UNMAN THREE ARRIVAL (RNAV) ST-179 (FAA)

GREENVILLE, SOUTH CAROLINA



SE-2, 14 SEP 2017 to 12 OCT 2017

SE-2, 14 SEP 2017 to 12 OCT 2017

UNMAN THREE ARRIVAL (RNAV)

GREENVILLE, SOUTH CAROLINA

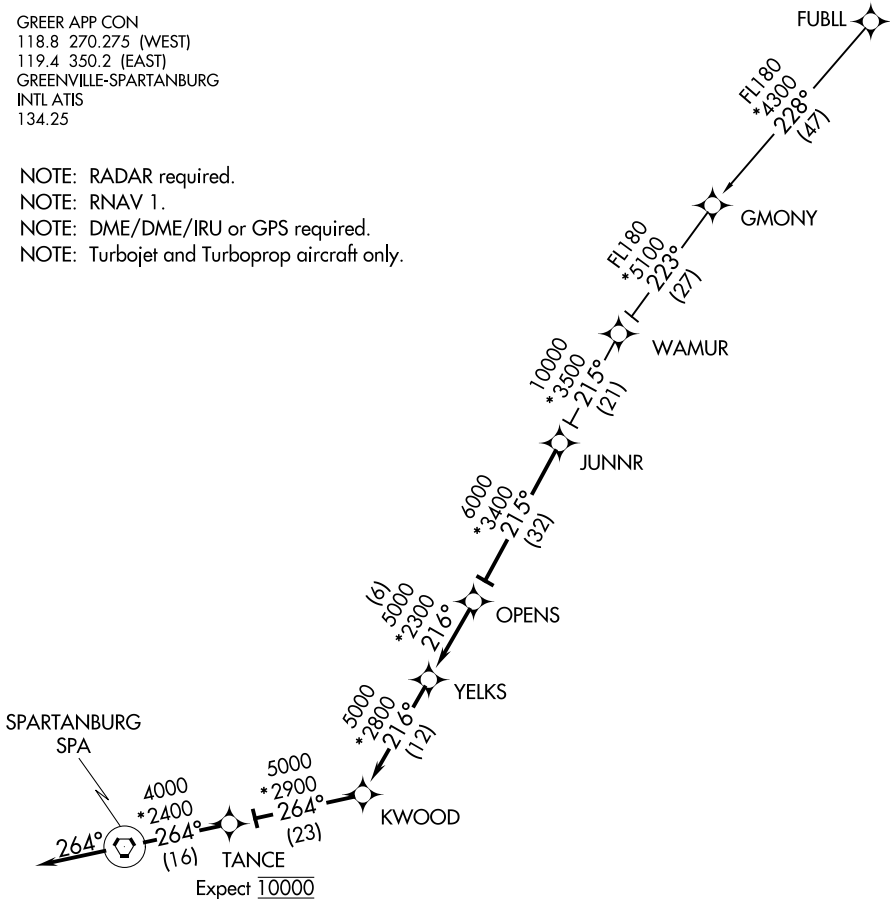
(UNMAN.UNMAN3) 15SEP16

# JUNNR TWO ARRIVAL (RNAV)

GREER, SOUTH CAROLINA

GREER APP CON  
 118.8 270.275 (WEST)  
 119.4 350.2 (EAST)  
 GREENVILLE-SPARTANBURG  
 INTL ATIS  
 134.25

- NOTE: RADAR required.
- NOTE: RNAV 1.
- NOTE: DME/DME/IRU or GPS required.
- NOTE: Turbojet and Turboprop aircraft only.



NOTE: Chart not to scale.

## ARRIVAL ROUTE DESCRIPTION

### FUBLL TRANSITION (FUBLL.JUNNR2):

From JUNNR on track 215° to OPENS, then on track 216° to YELKS, then on track 216° to KWOOD, then on track 264° to TANCE, then on track 264° to SPA VORTAC, then on heading 264° or as assigned by ATC. Expect RADAR vectors to final approach course.

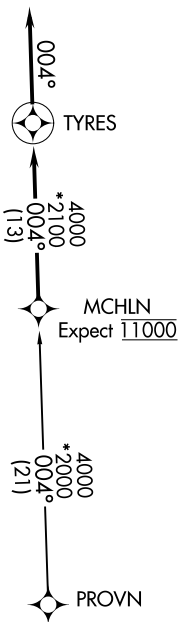
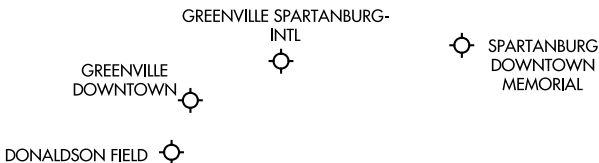
# JUNNR TWO ARRIVAL (RNAV)

GREER, SOUTH CAROLINA

# MCHLN ONE ARRIVAL (RNAV)

GREER, SOUTH CAROLINA

GREER APP CON  
118.8 270.275 (WEST)  
119.4 350.2 (EAST)  
GREENVILLE-SPARTANBURG INTL ATIS  
134.25



- NOTE: RADAR required.
- NOTE: RNAV 1.
- NOTE: DME/DME/IRU or GPS required.
- NOTE: Turbojet and Turboprop aircraft only.

NOTE: Chart not to scale.

## ARRIVAL ROUTE DESCRIPTION

### PROVN TRANSITION (PROVN.MCHLN1)

From MCHLN on track 004° to TYRES, then on heading 004°. Expect RADAR vectors to final approach course.

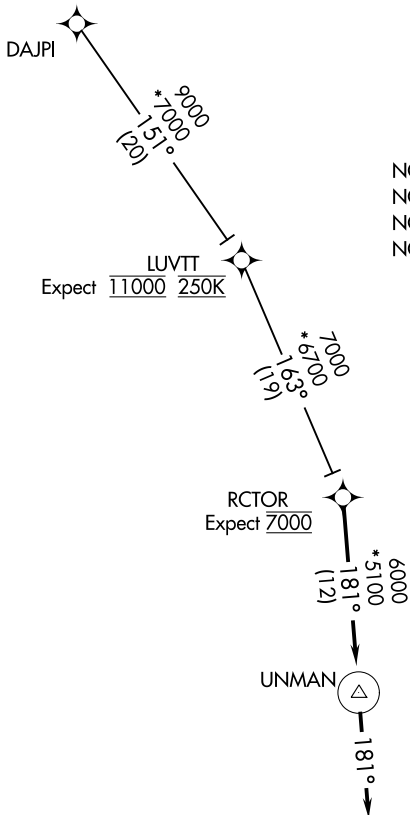
SE-2: 14 SEP 2017 to 12 OCT 2017

SE-2: 14 SEP 2017 to 12 OCT 2017

# RCTOR ONE ARRIVAL (RNAV)

GREER, SOUTH CAROLINA

GREER APP CON  
118.8 270.275 (WEST)  
119.4 350.2 (EAST)  
GREENVILLE-SPARTANBURG INTL ATIS  
134.25



- NOTE: RADAR required.
- NOTE: RNAV 1.
- NOTE: DME/DME/IRU or GPS required.
- NOTE: Turbojet and Turboprop aircraft only.

LUVTT  
Expect 11000 250K

RCTOR  
Expect 7000

UNMAN

SPARTANBURG  
DOWNTOWN  
MEMORIAL

GREENVILLE  
DOWNTOWN

GREENVILLE  
SPARTANBURG  
INTL

DONALDSON  
FIELD

NOTE: Chart not to scale.

## ARRIVAL ROUTE DESCRIPTION

### DAJPI TRANSITION (DAJPI.RCTOR1)

From RCTOR on track 181° to UNMAN, then on heading 181°.  
Expect RADAR vectors to final approach course.

WORKS ONE ARRIVAL (RNAV)  
(WORKS.WORXS1) 05JAN17

(WORKS.WORXS1) 17005  
WORKS ONE ARRIVAL (RNAV)

ST-5124 (FAA)

GREER, SOUTH CAROLINA

GREER, SOUTH CAROLINA

GREER APP CON  
118.8 270.275 (WEST)  
119.4 350.2 (EAST)  
GREENVILLE-SPARTANBURG INTL ATIS  
134.25

GREENVILLE DOWNTOWN  
GREENVILLE SPARTANBURG INTL  
SPARTANBURG DOWNTOWN MEMORIAL

DONALDSON FIELD  
TDAAY

4000  
\* 2200  
043°  
(1.6)  
ANGRI  
Expect 11000

8000  
\* 2100  
043°  
(28)  
WORXS

10000  
\* 2300  
063°  
(1.5)  
EVRRR

12000  
\* 2200  
066°  
(20)  
CNTLR

14000  
\* 2400  
080°  
(1.6)  
BESTT

NOTE: RADAR required.  
NOTE: RNAV 1.  
NOTE: DME/DME/IRU or GPS required.  
NOTE: Turbojet and turboprop aircraft only.  
NOTE: CNTLR transition for KATL departures only.



**ARRIVAL ROUTE DESCRIPTION**

BESTT TRANSITION (BESTT.WORXS1)  
CNTLR TRANSITION (CNTLR.WORXS1)

From WORXS on track 043° to ANGRI, then on track 043° to TDAAY, then on heading 043°. Expect RADAR vectors to final approach course.

NOTE: Chart not to scale.