

# BLOCC ONE ARRIVAL

GREENSBORO, NORTH CAROLINA

GREENSBORO D-ATIS  
128.55  
WINSTON-SALEM ATIS  
121.3  
GREENSBORO APP CON  
124.35 269.225 (250°-049°)  
126.6 327.075 (050°-249°)

GREENSBORO  
116.2 GSO   
Chan 109  
N36° 02.74'  
W79° 58.58'

SMITH  
REYNOLDS

PIEDMONT TRIAD  
INTL

RALEIGH-DURHAM  
117.2 RDU   
Chan 119

BLOCC  
N35° 32.93' - W79° 36.56'  
TURBOJET VERTICAL NAVIGATION  
PLANNING INFORMATION  
Expect clearance to cross at  
11,000 and 250K.

VACUM  
N35° 27.93'  
W79° 36.24'

SANDHILLS  
111.8 SDZ   
Chan 55  
N35° 12.93' - W79° 35.28'



TENNI  
N34° 46.90' - W80° 03.81'  
TURBOJET VERTICAL NAVIGATION  
PLANNING INFORMATION  
Expect clearance to cross at FL210.

FLORENCE  
115.2 FLO   
Chan 99

COLUMBIA  
114.7 CAE   
Chan 94  
L-24, H-9-12

NOTE: DME required.  
NOTE: Chart not to scale.

COLUMBIA TRANSITION (CAE.BLOCC1): From over CAE VORTAC via CAE R-043 and SDZ R-225 to SDZ VORTAC, then via SDZ R-360 to BLOCC INT. Thence. . .

. . . from over BLOCC INT via GSO R-152 to GSO VORTAC. Expect RADAR vectors to final approach course.

SE-2: 07 DEC 2017 to 04 JAN 2018

SE-2: 07 DEC 2017 to 04 JAN 2018

# BLOCC ONE ARRIVAL

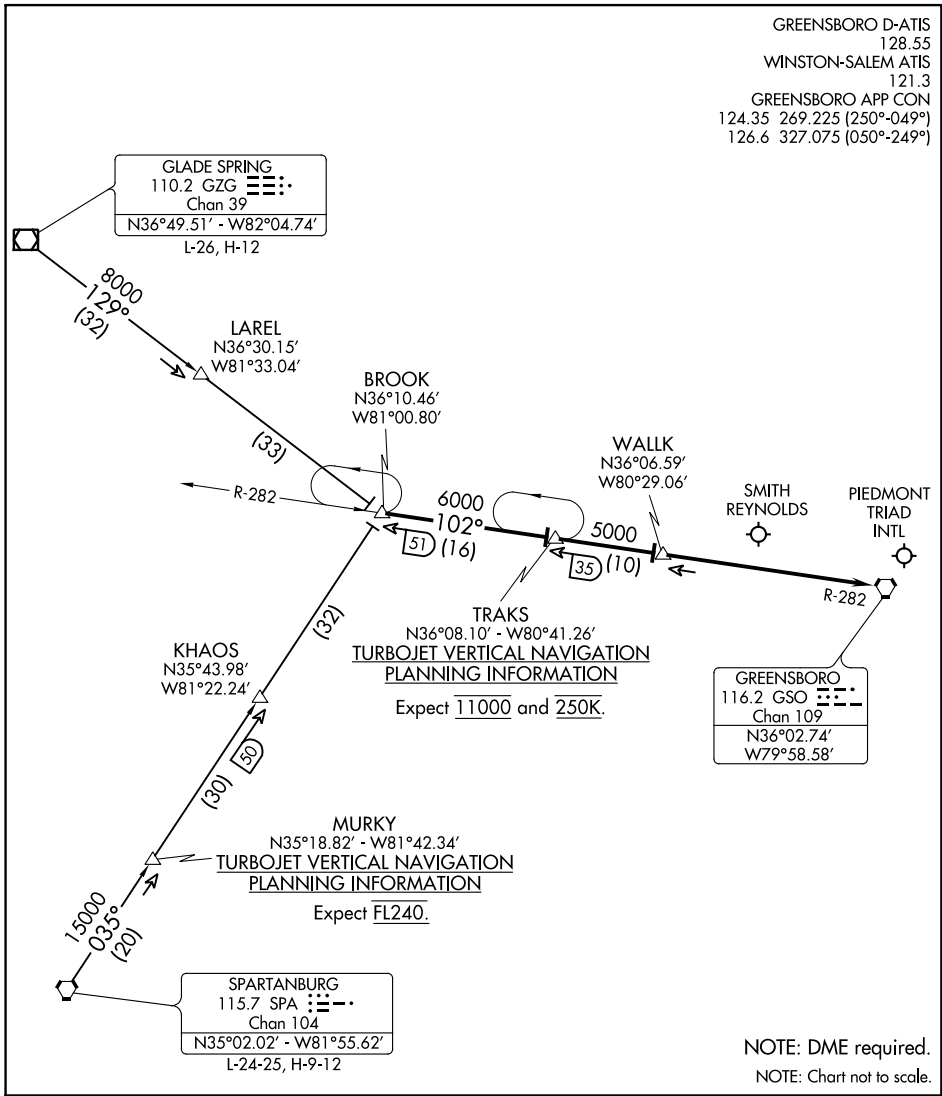
(BLOCC.BLOCC1) 27MAR97

GREENSBORO, NORTH CAROLINA

# BROOK THREE ARRIVAL

GREENSBORO, NORTH CAROLINA

GREENSBORO D-ATIS  
128.55  
WINSTON-SALEM ATIS  
121.3  
GREENSBORO APP CON  
124.35 269 225 (250°-049°)  
126.6 327.075 (050°-249°)



SE-2: 07 DEC 2017 to 04 JAN 2018

SE-2: 07 DEC 2017 to 04 JAN 2018

GLADE SPRING TRANSITION (GZG.BROOK3): From over GZG VOR/DME via GZG R-129 to BROOK INT. Thence. . . .

SPARTANBURG TRANSITION (SPA.BROOK3): From over SPA VORTAC via SPA R-035 to BROOK INT. Thence. . . .

. . . .from over BROOK via GSO R-282 to TRAKS, then on GSO R-282 to WALK, then on GSO R-282 to GSO VORTAC. Expect RADAR vectors to final approach course.

# BROOK THREE ARRIVAL

GREENSBORO, NORTH CAROLINA

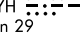
(HENBY.HENBY2) 17173

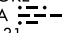
AL-178 (FAA)

# HENBY TWO ARRIVAL

GREENSBORO, NORTH CAROLINA

GREENSBORO D-ATIS  
128.55  
WINSTON-SALEM ATIS  
121.3  
GREENSBORO APP CON  
124.35 269.225 (250°-049°)  
126.6 327.075 (050°-249°)

LYNCHBURG
109.2 LYH 
Chan 29
N37°15.27' - W79°14.18'
L-26-36, H-10-12

ROANOKE
109.4 ROA 
Chan 31
N37°20.61' - W80°04.22'
L-26, H-10-12

MAA FL310  
5600  
\*5600  
181°  
(37)

MAA FL310  
4000  
\*4000  
235°  
(50)

11 NM

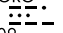
HENBY  
N36° 43.17' - W80° 01.49'  
Turbojets expect clearance  
to cross at 12,000'.

180°  
(40)

SMITH  
REYNOLDS 

PIEDMONT  
TRIAD  
INTL 

R-360

GREENSBORO
116.2 GSO 
Chan 109
N36°02.74' - W79°58.58'

NOTE: DME required.

NOTE: Chart not to scale.

LYNCHBURG TRANSITION (LYH.HENBY2): From over LYH VORTAC via LYH R-235 to HENBY INT. Thence. . . .  
ROANOKE TRANSITION (ROA.HENBY2): From over ROA VORTAC via ROA R-181 to HENBY INT. Thence. . . .

. . . .from over HENBY INT via GSO R-360 to GSO VORTAC. Expect RADAR vectors to final approach course.

# HENBY TWO ARRIVAL

(HENBY.HENBY2) 17MAR05

GREENSBORO, NORTH CAROLINA

SE-2: 07 DEC 2017 to 04 JAN 2018

SE-2: 07 DEC 2017 to 04 JAN 2018

# SMOKN THREE ARRIVAL

GREENSBORO, NORTH CAROLINA

GREENSBORO D-ATIS  
128.55  
WINSTON-SALEM ATIS  
121.3

PULASKI	
116.8 PSK	Chan 115
N37°05.26' - W80°42.77'	
L-26, H-9-10-12	

7000  
158°  
(10)

LENIX  
N36°56.58'  
W80°36.55'

87

5000  
154°  
(22)

SMOKN  
N36°37.57' - W80°23.03'  
VERTICAL NAVIGATION  
PLANNING INFORMATION  
Expect clearance to cross at 13,000'.

5000  
154°  
(40)

SMITH REYNOLDS

PIEDMONT TRIAD INTL

R-334

GREENSBORO	
116.2 GSO	Chan 109
N36°02.74' - W79°58.58'	

NOTE: This procedure is authorized for propeller aircraft only.

NOTE: Chart not to scale.

**PULASKI TRANSITION (PSK.SMOKN3):** From over PSK VORTAC via PSK R-156 to LENIX INT. Thence via GSO R-334 to SMOKN INT. Thence. . . .

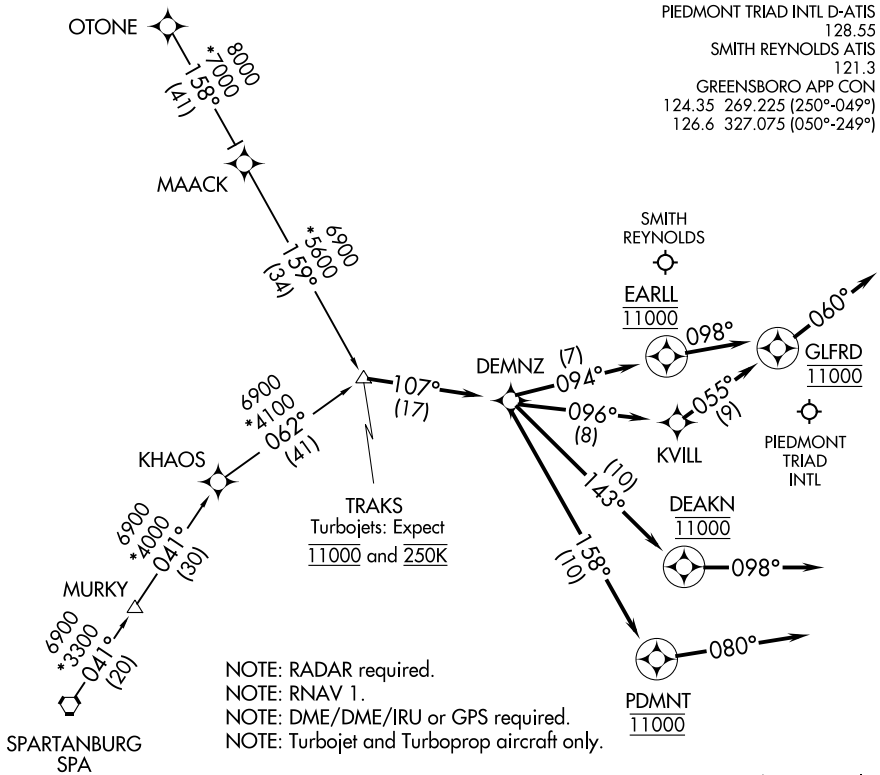
. . . .from over SMOKN INT via GSO R-334 to GSO VORTAC. Expect RADAR vectors to final approach course.

SE-2: 07 DEC 2017 to 04 JAN 2018

SE-2: 07 DEC 2017 to 04 JAN 2018

# TRAKS TWO ARRIVAL(RNAV)

GREENSBORO, NORTH CAROLINA



SE-2: 07 DEC 2017 to 04 JAN 2018

SE-2: 07 DEC 2017 to 04 JAN 2018

## ARRIVAL ROUTE DESCRIPTION

OTONE TRANSITION (OTONE.TRAKS2)

SPARTANBURG TRANSITION (SPA.TRAKS2)

GSO: From TRAKS on track 107° to DEMNZ.

LANDING RWY 05L: From DEMNZ on track 143° to cross DEAKN at 11000, then on heading 098°. Expect RADAR vectors to final approach course.

LANDING RWY 05R: From DEMNZ on track 158° to cross PDMNT at 11000, then on heading 080°. Expect RADAR vectors to final approach course.

LANDING RWYS 14/32: From DEMNZ on track 094° to cross EARLL at 11000, then on heading 098°. Expect RADAR vectors to final approach course.

LANDING RWYS 23L/R: From DEMNZ on track 096° to KVILL, then on track 055° to cross GLFRD at 11000, then on heading 060°. Expect RADAR vectors to final approach course.

LANDING INT: From TRAKS on track 107° to DEMNZ, then on track 143° to cross DEAKN at 11000, then on heading 098°. Expect RADAR vectors to final approach course.

# TRAKS TWO ARRIVAL(RNAV)

GREENSBORO, NORTH CAROLINA