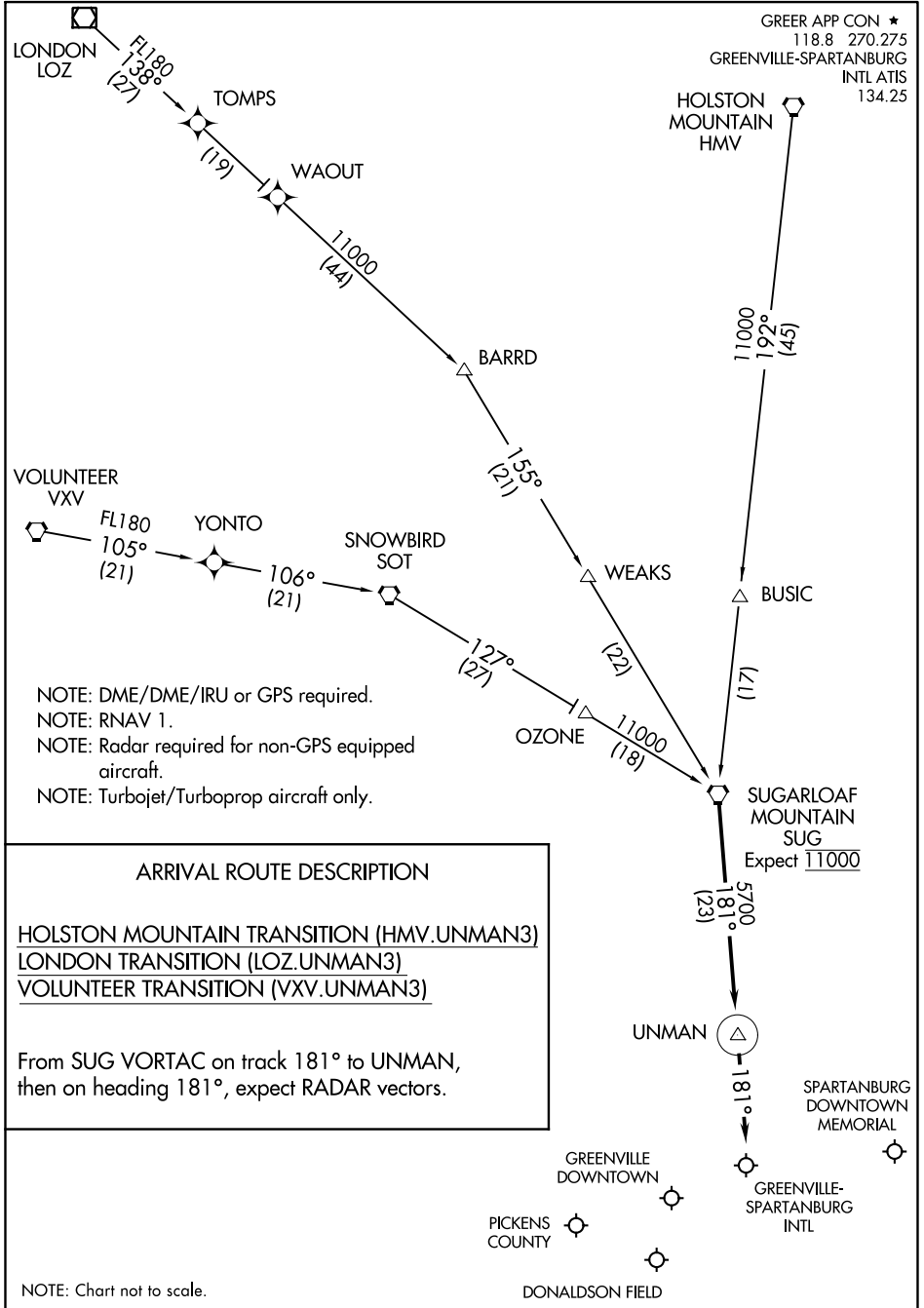


(UNMAN.UNMAN3) 16259

UNMAN THREE ARRIVAL (RNAV) ST-179 (FAA)

GREENVILLE, SOUTH CAROLINA



SE-2: 27 APR 2017 to 25 MAY 2017

SE-2: 27 APR 2017 to 25 MAY 2017

UNMAN THREE ARRIVAL (RNAV)

GREENVILLE, SOUTH CAROLINA

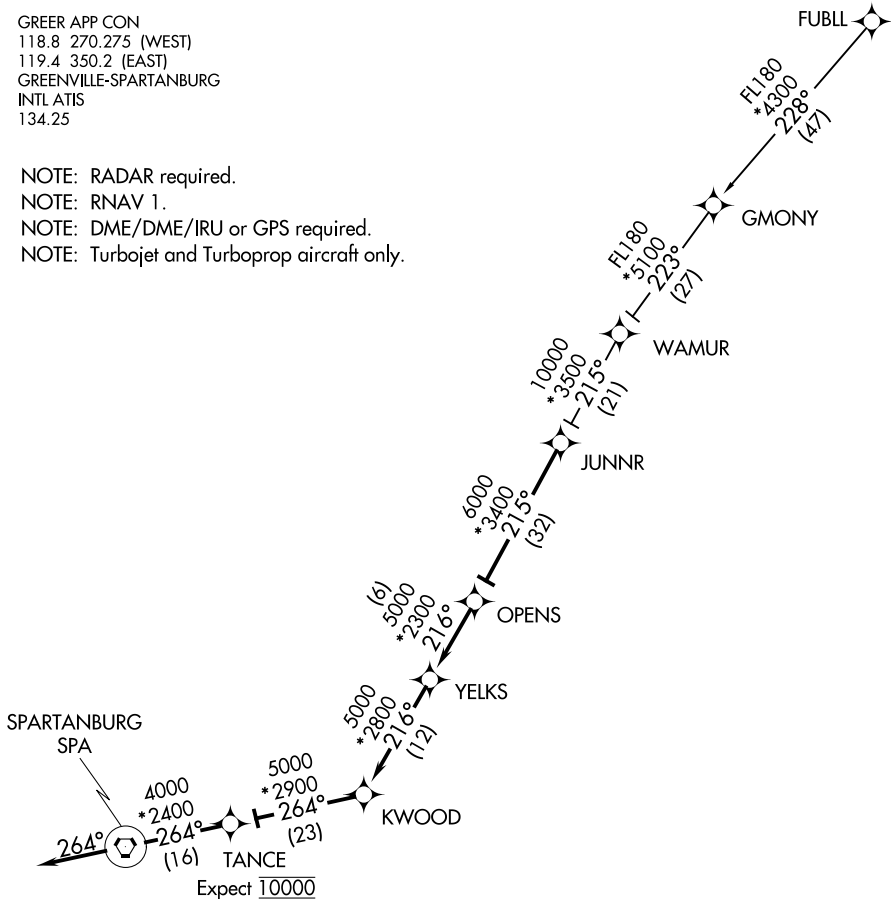
(UNMAN.UNMAN3) 15SEP16

JUNNR TWO ARRIVAL (RNAV)

GREER, SOUTH CAROLINA

GREER APP CON
 118.8 270.275 (WEST)
 119.4 350.2 (EAST)
 GREENVILLE-SPARTANBURG
 INTL ATIS
 134.25

- NOTE: RADAR required.
- NOTE: RNAV 1.
- NOTE: DME/DME/IRU or GPS required.
- NOTE: Turbojet and Turboprop aircraft only.



SE-2: 27 APR 2017 to 25 MAY 2017

SE-2: 27 APR 2017 to 25 MAY 2017

NOTE: Chart not to scale.

ARRIVAL ROUTE DESCRIPTION

FUBLL TRANSITION (FUBLL.JUNNR2):

From JUNNR on track 215° to OPENS, then on track 216° to YELKS, then on track 216° to KWOOD, then on track 264° to TANCE, then on track 264° to SPA VORTAC, then on heading 264° or as assigned by ATC. Expect RADAR vectors to final approach course.

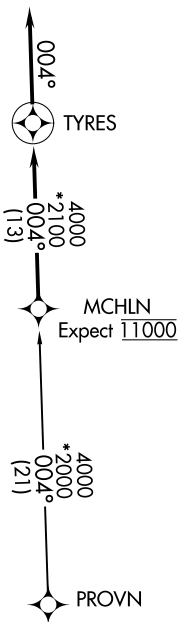
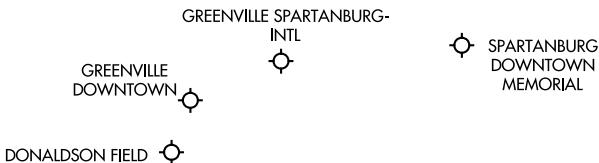
JUNNR TWO ARRIVAL (RNAV)

GREER, SOUTH CAROLINA

MCHLN ONE ARRIVAL (RNAV)

GREER, SOUTH CAROLINA

GREER APP CON
118.8 270.275 (WEST)
119.4 350.2 (EAST)
GREENVILLE-SPARTANBURG INTL ATIS
134.25



- NOTE: RADAR required.
- NOTE: RNAV 1.
- NOTE: DME/DME/IRU or GPS required.
- NOTE: Turbojet and Turboprop aircraft only.

NOTE: Chart not to scale.

ARRIVAL ROUTE DESCRIPTION

PROVN TRANSITION (PROVN.MCHLN1)

From MCHLN on track 004° to TYRES, then on heading 004°. Expect RADAR vectors to final approach course.

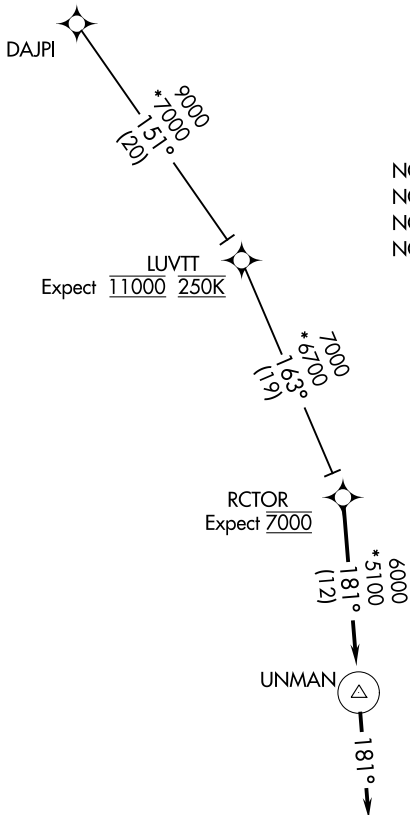
SE-2: 27 APR 2017 to 25 MAY 2017

SE-2: 27 APR 2017 to 25 MAY 2017

RCTOR ONE ARRIVAL (RNAV)

GREER, SOUTH CAROLINA

GREER APP CON
118.8 270.275 (WEST)
119.4 350.2 (EAST)
GREENVILLE-SPARTANBURG INTL ATIS
134.25



NOTE: RADAR required.
NOTE: RNAV 1.
NOTE: DME/DME/IRU or GPS required.
NOTE: Turbojet and Turboprop aircraft only.

LUVTT
Expect 11000 250K

RCTOR
Expect 7000

UNMAN

SPARTANBURG
DOWNTOWN
MEMORIAL

GREENVILLE
DOWNTOWN

GREENVILLE
SPARTANBURG
INTL

DONALDSON
FIELD

NOTE: Chart not to scale.

ARRIVAL ROUTE DESCRIPTION

DAJPI TRANSITION (DAJPI.RCTOR1)

From RCTOR on track 181° to UNMAN, then on heading 181°.
Expect RADAR vectors to final approach course.

WORKS ONE ARRIVAL (RNAV)
(WORKS.WORXS1) 05JAN17

(WORKS.WORXS1) 17005
WORKS ONE ARRIVAL (RNAV)

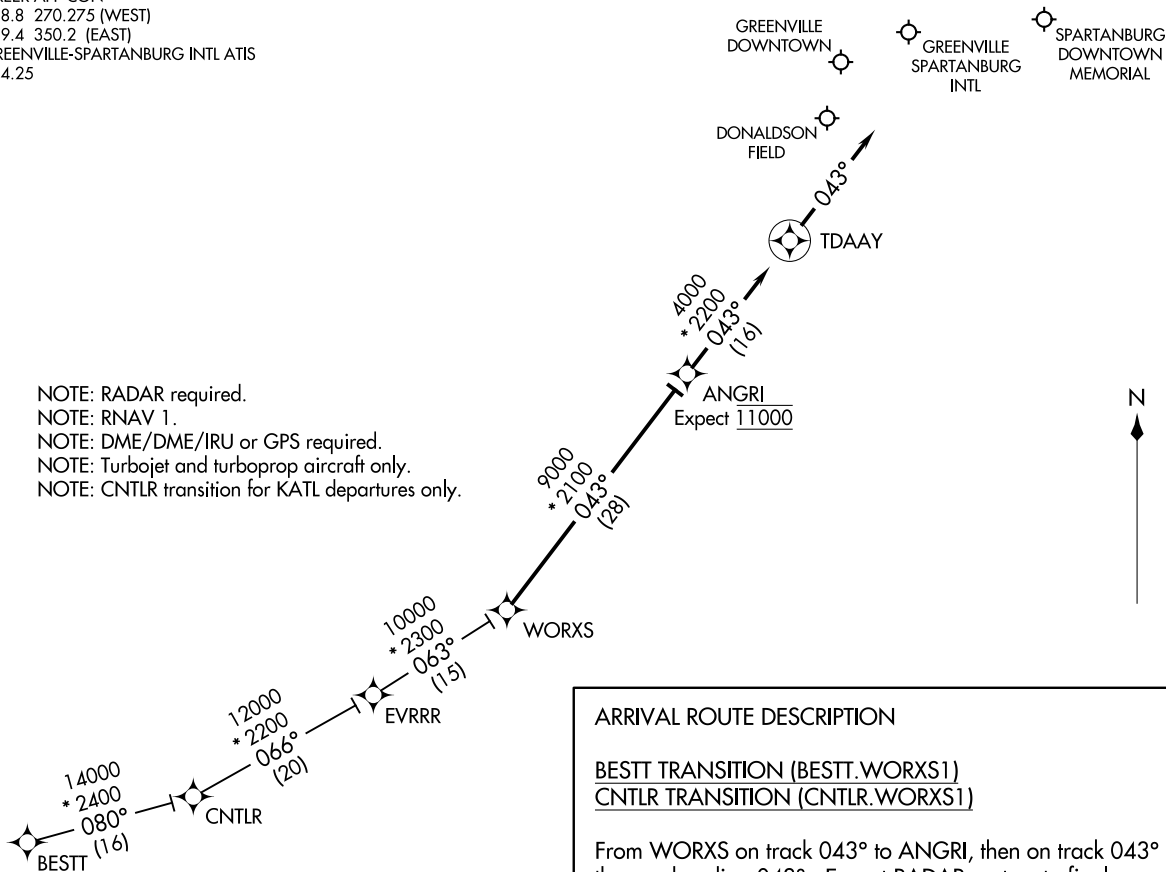
ST-5124 (FAA)

GREER, SOUTH CAROLINA

GREER, SOUTH CAROLINA

GREER APP CON
118.8 270.275 (WEST)
119.4 350.2 (EAST)
GREENVILLE-SPARTANBURG INTL ATIS
134.25

NOTE: RADAR required.
NOTE: RNAV 1.
NOTE: DME/DME/IRU or GPS required.
NOTE: Turbojet and turboprop aircraft only.
NOTE: CNTLR transition for KATL departures only.



ARRIVAL ROUTE DESCRIPTION

BESTT TRANSITION (BESTT.WORXS1)
CNTRLR TRANSITION (CNTRLR.WORXS1)

From WORXS on track 043° to ANGRI, then on track 043° to TDAAY, then on heading 043°. Expect RADAR vectors to final approach course.

NOTE: Chart not to scale.