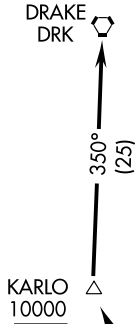


# DRAKE ONE DEPARTURE (RNAV) (OBSTACLE)

ATIS 119.425  
LUKE DEP CON \*  
118.15 363.12  
PHOENIX DEP CON  
120.7 239.0  
GLENDALE TOWER \*  
121.0 (CTAF)  
UNICOM 122.95



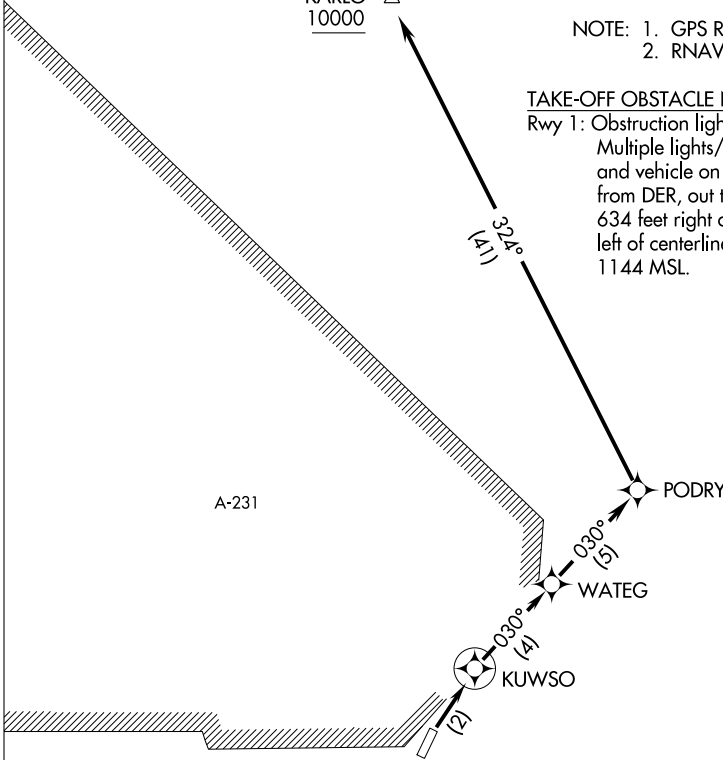
### TAKE-OFF MINIMUMS

Rwy 19: NA-ATC.  
Rwy 1: Standard, with minimum climb of 400 feet per NM to KUWSO.

NOTE: 1. GPS Required.  
2. RNAV 1.

### TAKE-OFF OBSTACLE NOTES

Rwy 1: Obstruction light on blast fence.  
Multiple lights/poles, buildings, trees and vehicle on roads beginning 4 feet from DER, out to 680 feet from DER, 634 feet right of centerline to 437 feet left of centerline, up to 79 feet AGL/ 1144 MSL.



NOTE: Chart not to scale.



### DEPARTURE ROUTE DESCRIPTION

TAKE-OFF RWY 1: Climb direct KUWSO, then via depicted route to cross KARLO at or above 10,000.